

Did you Know? The Driving Picture in Ontario

- There are approximately 8.1 million licensed drivers in Ontario
- Approximately 1.9 million of Ontario's licensed drivers (about 23 per cent of all drivers) are 55 years of age or older.
- In 2000, there were about 443,000 drivers involved in collisions. Of those, 63,000, or 14 per cent were 55 years of age or older.
- The percentage of drivers involved in collisions in the 55 and over age categories is lower than any other group.
- Seniors and Safe Driving
- Despite negative media reports on seniors who are involved in high profile driver incidents, older Canadians are safe drivers.
- For example, in Ontario the number of collisions per 10,000 senior drivers continues to drop. In fact, the percentage of drivers in the 55 and older age group involved in collisions is lower than any other age group.
- An Ontario Ministry of Transportation study, An Overview of Senior Driver Collision Risk, found that on a basis of kilometres driven, older drivers actually get into approximately the same number of accidents as their 16- to 24-year-old counterparts

For safe driving tips or information on hosting your own DriveWise Program, check out <http://www.drivewise.ca> or call 416-398-8257.



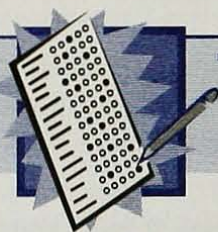
Williscroft WI, Bruce County District



Williscroft WI recently hosted the Drive Wise Program at the Paisley Presbyterian Church. Over 110 people crowded into the basement hall to enjoy the informative presentation by a local O.P.P. Officer Chris Cossett.

Williscroft WI extended an invitation to local seniors groups and neighbouring WI, which resulted in such a large turnout. The entire community was "a buzz" prior to the event. Advertising was done using the ROSE Session posters (available from the provincial office), church bulletins, and local radio and newspapers.

Participants enjoyed the "Question and Answer" period following the presentation and the door prizes and refreshments that were offered. Congratulations Williscroft WI on a job well done!



TEST YOUR KNOWLEDGE ROSE QUIZ

Answer True or False to the following Questions.
Answers appear on back page.

1. A ROSE Session is an educational event open to the public.
2. Your ROSE Session must be focused on a health topic.
3. The ROSE Program has reached over 40,000 people since inception.
4. Your ROSE Session must be a complicated and elaborate event.
5. Your Branch can charge admission at your ROSE Sessions.
6. ROSE Sessions are what WI has been doing for the last 109 years.
7. Scrapbooking, cooking and crafts make great ROSE Sessions.
8. ROSE Sessions are another way to promote membership to your community.
9. If your Branch decides to host a ROSE Session you are on our own to organize and plan it.
10. A ROSE Session can be fun.