

Remembering our roots

The Erland Committee helped celebrate Janet (Lee) Davis's 70th birthday by serving a hot meal at the Lee. Janet used to live at the Lee prior to it being transitioned into the museum home. Pictured here are three generations of Lee women - (back row) Alison (Lee) Schreiber, Janet's sister and Janet (Lee) Davis. In the front are Janet's daughters Lee and Michelle with Abigail Lee Talic.

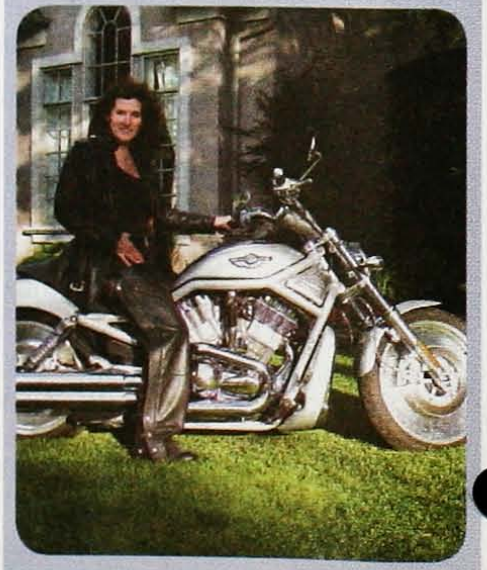
Time to celebrate!

The Listowel West WI (Guelph Area) took some time to celebrate the 110th birthday of Women's Institute by hosting a Soup, Sandwich and Progressive Euchre day! Everyone enjoyed a wonderful lunch followed by fruit and birthday cake. Most of the group enjoyed games of euchre, but some learned how to play dominoes.



Ride On!

Bethesda Reach WI (Central Area) has created a fundraising calendar that features Members on Harley Davidson motorcycles! This idea was developed to honour one of our newest Members - a former professional bike racer. The launching of this unique calendar featuring photos of beautiful bikes and leather clad WI Members symbolizes this Branch's determination to move on to new interests, new trends and more Members in their 50th year! Bethesda Reach has been busy fundraising and hosting luncheons, a fashion show and raffles in addition to selling almost 300 calendars! All this hard work and dedication has enabled the Branch to donate scholarships, support local hospitals, plant trees and be a busy beehive of activity in the community. Bethesda Reach WI has also been active in the ROSE Program for many years!



Way to Go

Richards Landing WI!

Richards Landing WI President Shirley Lukala and Treasurer Sharon Clark appear in this photo that was included in a local newspaper.

"We are not a bunch of older women just getting together for a social gathering." This is a quote from Richard's Landing WI (North Central Area) President Shirley Lukala that appeared in the Richard's Landing local newspaper. In addition to the Branch celebrating a significant anniversary, they invited a local reporter to participate in the festivities, resulting in a valuable article including a photo in the paper. What a great way to generate exposure and promote the activities of the Branch. Throughout the article, Shirley and other WI Members quoted some of the accomplishments of WI, and encouraged women to learn more about their Branch and how to get involved. Great job ladies!