

On the road again...

The ROSE Program is coming to a community near you!

The WI ROSE Garden will be visiting Canada's Outdoor Farm Show in Woodstock from September 11-13, 2007. Last year's event was a great success with tremendous support from the local Branches. Visit www.outdoorfarmshow.com for more information.

New this fall, we're also participating in Port Elgin's Award Winning Pumpkinfest Event on October 6-7, 2007. Pumpkinfest is an annual harvest festival that includes more than forty events taking place along the shores of beautiful Lake Huron. An international weigh-off competition, one of Ontario's largest car shows, a craft show, the children's area and fabulous entertainment draw more than 60,000 visitors from near and far! Get all the details at www.pumpkinfest.org

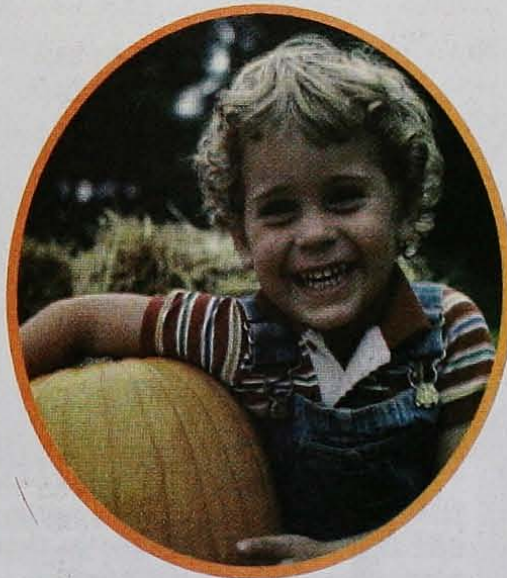
The WI ROSE Garden is a private oasis that will allow women the opportunity to relax, be pampered and take a well deserved break from their busy lives. A series of 20-minute ROSE Sessions (presentations, demonstrations and guest speakers) to entertain, educate and empower women will feature reiki, reflexology, tai chi, meditation and more!

Vendors and relevant information displays will also be included in the ROSE Garden to help provide a robust itinerary full of practical and easy tips on how women can be happy and healthy!

CANADA'S
Outdoor
FARM SHOW

SEPT. 11, 12, 13, 2007
CANADA'S OUTDOOR PARK
WOODSTOCK, ONTARIO
outdoorfarmshow.com

14th Annual



Port Elgin's Award Winning

 **Pumpkinfest**
IN THE MUNICIPALITY OF SAUGEEEN SHORES



We want to hear from you!

Send your stories and photos for our next issue of *The Home & Country ROSE Garden* to the following address:

The Home & Country ROSE Garden

7382 Wellington Road 30, RR # 5
Guelph, ON N1H 6J2

or email them to
roseprogram@fwio.on.ca

or fax them to
519-836-9456

Please note, your article may not appear exactly as submitted. We will do our best to edit appropriately to include as much information as possible. Be sure to make an additional copy of your photos before submitting them as we will no longer be able to return photos.

Thank you for your understanding.

Deadline Dates

Winter 2008

December 1, 2007

Spring/Summer 2008

March 1, 2008