

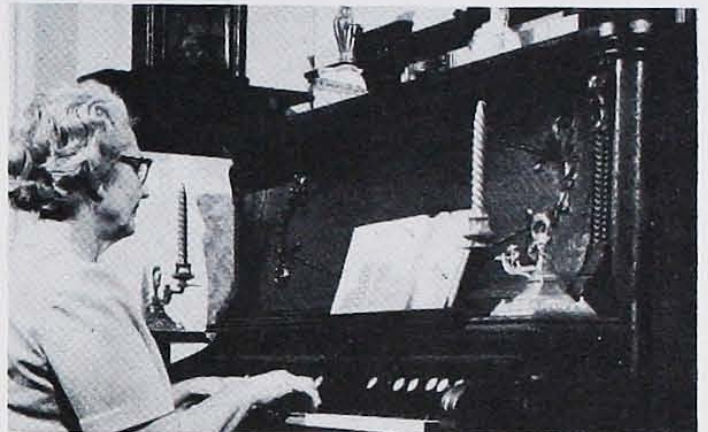
Situated on the Ridge Road, R.R. 1, Stoney Creek - 2.9 acres
Owned by the Federated Women's Institutes of Ontario

THE ERLAND LEE HOME

Thanks to every member in Ontario for making the second year of operation so successful.

1974 proved rewarding because Women's Institute members continued to be behind this project. You assisted the Committee in so many ways. The 10c per member assessment which appears on your fee sheet received wholehearted support. This money will build up our foundation fund and in the years to come the interest will carry the project, stated Mrs. Zoeller.

Cash donations from individual members, Branches, Districts and Areas have been generous. The Committee have purchased needed articles for the Home from these donations, and we know from your comments and letters you are pleased. Articles also have been donated, enhancing many of the rooms.



Mrs. Victor Beachin, hostess, takes time out to play the old "Minnie Walkom" organ from Perth South.

It is also our wish that all members continue to lend moral support, that you feel a sense of pride and you continue to feel this has been one of your most worthwhile projects.

A project of this magnitude continues on; as all are well aware we lack a constant water supply. Plans have been made to drill a well (and hopefully find water) and build proper washroom facilities with a target of completion the Spring of 1975.

Inside the Home, plans have been made to remove the bathroom off the upstairs hall. This will make the hallway larger and the front window will give additional light and add beauty to this area. The bedrooms and hallway will be papered in period style.

We would hope to start on a child's bedroom. To date we only have one article, a child's jumper, so anyone who has any child's furnishings or wishing to make donations, this will be the room we will concentrate on next.

The Municipality of Hamilton-Wentworth is doing a survey and by next Spring highway signs will be posted, which should assist all visitors with travel directions.

VISITING HOURS

Hours for visiting the Home — 10:00 a.m. to 3:00 p.m., Monday through Friday, with the exception of the month of February when the Home is closed.

APPOINTMENT

No appointment will be required for individuals or one carload to visit the Home. Busloads, or more than five people, should make application to tour the Home to: Mrs. Wm. G. Miller, 5297 Lawrence Ave. E., Highland Creek M1C 1R5 who will schedule the tours. We feel this will give individuals the opportunity to drop in, while you can understand it is necessary for larger groups to be scheduled in an orderly fashion.

WOMEN'S INSTITUTE WEEK

June 9-13, 1975



Erland Lee Parlour

What-Not, a gift from York North District, with display of Canadian Glass donations from individuals and Branches.

During the year, we engaged the services of Mr. and Mrs. Victor Beachin. The Committee appreciate their co-operation and know they have given pleasure to many viewing the Home. Overseas visitors especially have thoroughly enjoyed their visit and have taken time to write and tell us so.

The municipality of Hamilton Wentworth Region have seen fit to grant us some funds for operational costs. The Committee feels overjoyed with this kind of support, and hope that this Women's Institute project will continue to attract many visitors over the years. The Erland Lee Home, situated on the Bruce Trail has been plaqued as an historic site and it is our wish that this contribution to posterity will always be recognized by the Regional Municipality.