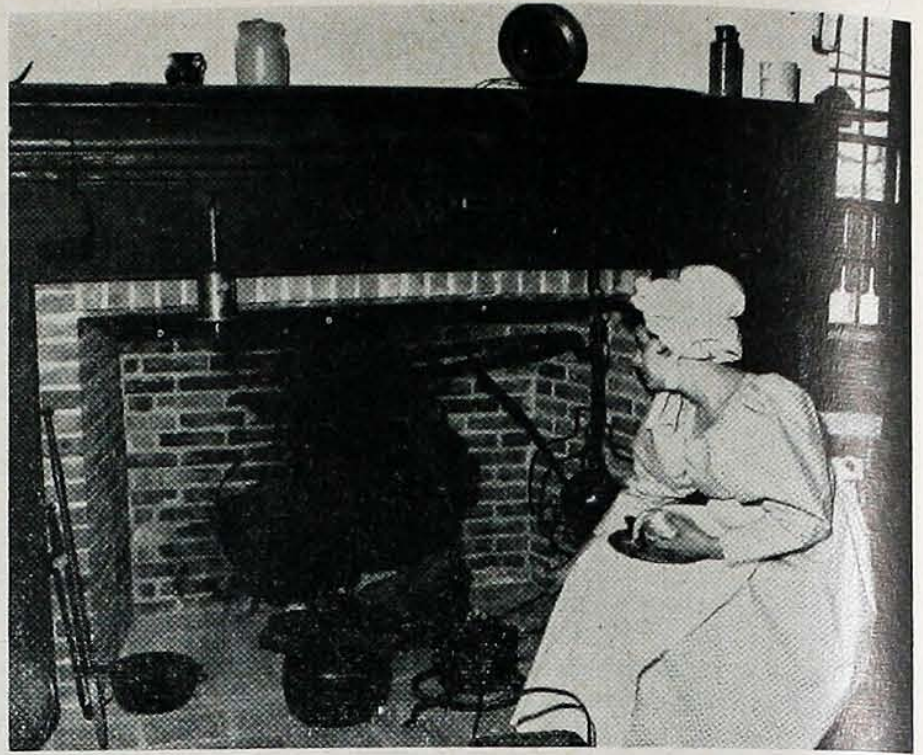


This portrait from the past, illustrating cooking methods of the 19th century was taken at Upper Canada Village, Ontario, just this year. The Village, a re-creation of a typical Ontario community of the pioneer era, is the provincial government's salute to the past, to be opened to the public in June, 1961. Most of the forty-odd buildings — houses, churches, taverns, mills — in the Village were salvaged from the small towns inundated with the construction of the St. Lawrence Power Project and Seaway. It is located seven miles east of Morrisburg, in Crysler Farm Memorial Park, itself a beautifully-landscaped tribute to soldier and Loyalist who settled in the area. The Village is administered by The Ontario-St. Lawrence Development Commission (G. H. Challies, Chairman), who are responsible for parks and preservation of historic sites in Ontario, particularly those affected by the Power Project and Seaway.



For Bus Trips with Museum Interest

UPPER CANADA VILLAGE

What promises to become one of Ontario's major tourist attractions is rapidly taking shape near Morrisburg, on the north shore of the St. Lawrence River in southeastern Ontario, Canada. Located in Crysler's Farm Battle Memorial Park, Upper Canada Village will provide a comprehensive reflection of the environment and mode of life of Ontario's early settlers, particularly of the United Empire Loyalists who migrated to Canada after the American Revolution. Official opening ceremony by the Prime Minister of Ontario, Hon. Leslie M. Frost, will be on June 24th.

The village will be managed, operated and maintained by the Ontario-St. Lawrence Development Commission. Grants approved by the Ontario Government to aid in the restoration of historic buildings total \$805,000, spread over the past three years of intensive planning and work on the project. When completed it should at least, though more primitive, equal Williamsburg in interest. (Ontario Travel News)

INVITATION TO JORDAN

Jordan Historical Museum again invites the Women's Institutes of Ontario to visit the Museum this summer. The Executive announces that there will be "many new displays such as a special exhibit of contemporary pottery, new wedding dresses, and educational material." The second floor of the Fry House, the home of the farmer-weaver dating to 1814, will be open. And there are facilities for picnics with hot water provided. Visiting hours are from 12 noon to 6 o'clock, seven days a week; but special arrangements will be made for groups. The Museum, as the name implies, is at the village of Jordan in Wentworth County. Anyone wishing to telephone should call the Custodian, Jordan Museum, Logan 2-5242.

PETER McARTHUR HOUSE AT DOON

"The log house in the Township of Ekfrid, Middlesex County, in which Peter McArthur was born, and in which much of his writing was done, has been dismantled and moved to Doon," the Ontario Historical Society reports in its News Letter.

"At a meeting of the Ontario Pioneer Community Foundation at Kitchener, October 20, 1959, Dr. Louis C. Jones, Director of the Farmers' Museum, Cooperstown, N.Y., said: 'The McArthur house (is) where your great humorist interpreted and laughed about the same pioneer life that you are interpreting. It is a wonderful thing that you have the house of a humorist. Museums need as much laughter as they can get. Your buildings should be either significant to the early history of Ontario in themselves, or characteristic of early Ontario.'"

BYTOWN AS A MEETING HOUSE

From Bytown Museum, Ottawa, we have this note:

"In August we arranged with one of the Women's Institutes to hold a meeting in our museum. This was a most successful venture. A short business session preceded a conducted tour of the three floors. Some of our own members saw the beauties of our location in the evening for the first time. We intend to continue this plan as we have had other requests.

"The Children's Section, with its enlarged floor-space, was popular with young and old. A large case built in the cornice over the stone wall holds cast-iron toys which have been re-painted in the original colours. Fire engines drawn by horses three abreast, ladder trucks, red helmets and jackets, evoked much curiosity. A freight train and other pieces complete a good collection."