



ESQUESING HISTORICAL SOCIETY NEWSLETTER

P.O. Box 51, Georgetown, Ontario, Canada L7G 4T1
www.esquesinghistoricalsociety.ca

Vol. 33 No. 1

March - April 2008

The Maple Leaf Forever!

*In days of yore, from Britain's shore,
Wolfe, the dauntless hero came,
And planted firm Britannia's flag,
On Canada's fair domain.
Here may it wave, our boast, our pride,
And joined in love together,
The thistle, shamrock, rose entwine
The Maple Leaf forever!*

Chorus:

*The Maple Leaf, our emblem dear,
The Maple Leaf forever!
God save our Queen, and Heaven bless,
The Maple Leaf forever!*

WOLFE ROUTS MONTCALM AT QUEBEC! BOTH GENERALS SUCUMB!

These potential headlines for September 1759 mark the death of the French Empire and mark the ascendancy of the British Empire as the world power. The opening lyrics to *The Maple Leaf Forever*, although written in 1867, recall the pivotal moment in our history. But once we get past the war between a fading world power and a growing world power, the historian can look at the actual players in the drama – the English, Welsh and Scottish soldiers, the American soldiers, the French soldiers, the *Canadiens* and the native allies from both sides. These are the people who would forge the foundation of the new Dominion of Canada.

The Esquesing Historical Society is pleased to present local author Kevin Gray who has written a book entitled *Where the River Narrows*. Kevin recounts the story of the 1759 siege of Quebec City through the eyes of the defenders, the attackers and those caught in between. Read his story on page two! Kevin will speak at the March meeting in full uniform!



James Wolfe



Kevin Gray at Glen Williams 2006

Siege of Quebec City, 1759

War is fickle. It heaps riches upon few and ruin upon many. The people of European descent who established colonies in North America understood this very well. Permanent settlement of both New England and New France began early in the 1600's. The difficulties encountered by the first generations of intrepid colonists, both French and English alike, are myriad and to most of us today, unimaginable. What is surprising is that despite interminable rigors and hardships, the colonists somehow managed to find the time to conduct skirmishes beyond counting and to wage no less than three wars against each other during their first 150 years. Indeed it seems that the ebb and flow of war and peace was as much a part of their way of life as were

the tides and seasons. This compelling period of Canadian History came to an end with the British expedition against Quebec in 1759.

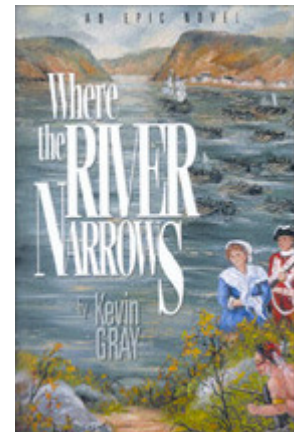
Kevin Gray is the author of the novel *Where the River Narrows*. A work of historic fiction, the book tells the story of the siege of Quebec City and the Battle of the Plains of Abraham. The principal characters are fictitious; however, many real persons are portrayed throughout the story for the purpose of illuminating this critical moment in the history of North America. Created with a view to making this exciting period of history more accessible to Canadians, the novel took 7 years to produce and is entirely self published and self marketed.

Wearing the uniform of the British Infantry from the period, Gray talks about the history of the Seven Years War in North America and explains in detail how the events at Quebec relate to the larger struggle.

Copies of the book signed by the author will be available for purchase.

ISBN 0-97369080-1 \$23.95 Cdn

www.barbermillpublishing.com





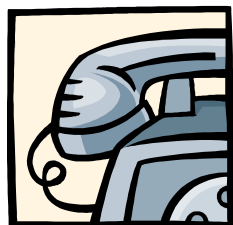
ESQUESING HISTORICAL SOCIETY SCHEDULE OF MEETINGS 2008

- Wed. 12 **Where the River Narrows - Kevin Gray**, local author and military re-enactor, will
March speak to the Society about the British conquest of Quebec and the 40th Regiment of
2008 Foot's involvement in this defining moment in Canadian history.
KNOX PRESBYTERIAN CHURCH, Main Street, Georgetown, 7:30 p.m.
- Wed. 09 **Limehouse Remembered** – Local historian **John McDonald** will share his slide
April show of the village of Limehouse, which he prepared for the 150th anniversary of the
2008 village last summer. Having grown up in the area, he can share many local tales
with us.
KNOX PRESBYTERIAN CHURCH, Main Street, Georgetown, 7:30 p.m.
- Wed. 14 **The Revolutionary Impact of the Bicycle on 19th century Culture - Donald**
May **Zaldin** is Vice President of The Ephemera Society of Canada and a past President of
2008 The Bootmakers of Toronto. He will speak on the bicycle and its great impact on
the culture of the late 19th century.
KNOXPRESBYTERIAN CHURCH, Main Street, Georgetown, 7:30 p.m.
- Wed. 11 To Be Announced
June
2008

ALL MEETINGS ARE OPEN TO THE PUBLIC AT NO CHARGE!

Refreshments served from 7:00 p.m.

ESQUESING HISTORICAL SOCIETY EXECUTIVE MEMBERS



Stephen Blake	905 877-8251	President
Karen Hunter	905 838-2109	Treasurer
Dawn Livingstone	905 877-6506	Secretary
Sherry Westfahl	905 873-7145	Past - President
J. Mark Rowe	905 877-9510	Archivist
Jan Raymond	905 877-9172	Publications
Marj Allan	905 877-9985	Membership
Cathy Hunt		Social

Society Notes

INTERNET CONNECTIONS

The Esquesing Historical Society has an official web site on the World Wide Web. <www.esquesinghistoricalsociety.ca>

Send your e-mail to mrowe6@cogeco.ca or dlvngstn@sympatico.ca

EHS NEWSLETTER

John Mark Rowe prepared this newsletter with assistance from Karen Hunter and Dawn Livingstone. Submissions welcome. You may opt to receive your newsletter sent electronically to an e-mail address you provide.

MEMBERSHIP

Our 2008 paid memberships stands at 64. We had 115 members last year, so there are many people who have not yet renewed. This will be the final newsletter for those who do not renew this month! The individual rate is \$10. The family or institution rate is \$12. Cheques payable to the Society can be mailed to our post box. Marj Allen, membership secretary, will accept your 2008 fee at the meetings. Renewals for 2008 are now due!

ARCHIVES

Whenever time allows volunteers continue to plug away at the Archival finding aid and the photograph collection. We're still hoping to find a volunteer to type up the photograph shelf list on a computer.

Contact Mark or Karen and we'll get you started.

Mrs. Elizabeth Grant recently sent us several pages on the Appelbe family, which will added to the Archives.

The Esquesing Historical Society has applied for a Federal grant for a summer student this summer. We'll let you know how successful we are.

ARCHIVES OF ONTARIO

77 Grenville Street, Toronto 416-327-1600

www.archives.gov.on.ca

A new facility is under construction!

UNITED CHURCH ARCHIVES

The United Church of Canada Archives closed their reading room on 21 December 2007. In early 2008, The United Church Archives (Toronto) will be moving from the Victoria University campus at the University of Toronto to The United Church of Canada's General Council Office at 3250 Bloor St. West in west-end Toronto. Public access at this new location will be facilitated by its proximity to major transportation routes, the Islington subway station, and on-site parking. The new location will also allow for more immediate access and integration of the archives collection into the life and work of the church's national office and the church's governing body, the General Council. The new facility opens on 5 May 2008.

HALTON-PEEL OGS

Four Corners Branch Library, 65 Queen St., Brampton.

March 30 @ 2 p.m. Dorothy Kew on "British West Indian Genealogical Research"

Call Ann Logan at 905-845-7755

STREETSVILLE HIST. SOCIETY

The Society meets the 2nd Thursday of the month (Feb, Apr, Oct, Dec), 8:00pm, at Streetsville Village Hall, 271 Queen Street South. Call Norm Potts at 905.858.0070.

BRAMPTON HIST. SOCIETY

The Society meets at Heart Lake Presbyterian Church, 25 Ruth Ave. at 7:15 March 20 – Dennis Patterson, schoolmaster of Britannia Schoolhouse will speak on the current programmes being offered.

MILTON HISTORICAL SOCIETY

The Society meets at the Waldie Blacksmith Shop at 16 James Street at 8p.m. on the third Thursday of each month.

Thursday March 20

"DEADLY WOMEN OF ONTARIO" with Cheryl MacDonald

Thursday April 17

"PLACES OF MEMORY Exploring Historic Cemeteries in Canada" with Jane Irwin

OAKVILLE HISTORICAL SOCIETY

Admission Free * Donations Welcome
For information about the Oakville
Historical Society and the collection, please
telephone (905) 844-2695.

NASAGIWEYA HIST. SOCIETY

The Nasagiweya Historical Society meets
the second Tuesday of each month at
Nassagaweya Presbyterian Church in
Haltonville at 7 p.m. President Eli Daigle
905-854-2628

CONGRATULATIONS KATHIE

The Esquesing Historical Society would like
to congratulate member Kathie Vanular on
her new position as curator to the Whitby
History Museum. The museum can be
visited on the internet at

www.whitbyhistoricalsociety.com .

PLAQUE DEDICATION

Come out to the Glen Williams Town Hall
on Saturday 24th May at 2 p.m. to see the
unveiling of the Heritage Halton Hills
plaque marking the building as protected
under the Ontario Heritage Act.

Refreshments will follow!

MEMBERSHIP RENEWAL

The princely sum of \$10 is respectfully
requested as soon as possible by all our
members to renew for 2008. Please submit
by post or in person at our March meeting.
This will be the final newsletter for those
who do not renew for 2008!

FEBRUARY MEETING INTERESTING

After the AGM portion of the February
meeting of the EHS, we presented
Tombstone Tales featuring several members
of the Society. Mark Rowe spoke on Rev.
Charles Dade; Dawn Livingstone spoke on
the Kennedy family and John Watkins;
Steve Blake spoke on the Campbell family;
John Somer spoke on Frank Black; Hazel
Arnold spoke on her father Sam Walker;
Karen spoke on the Petch, Duff, Moore,
McGraw and Robert Little families. Betty
Brownridge also addressed her article in the

last issue of the newsletter on David
McNeely.

ARBOUR DAY APPROACHES!



Figure 7—The above group of Upper Canada College boys planted
twelve thousand pine trees in 1939 on their newly established
forest property at Norval, Ontario.

ANY LOCAL CONNECTION?

In the April 17, 1912 Georgetown Herald
the following appears:

MARRIED - Turpin-Mavor - At Winnipeg,
on Thurs., Mar. 7th, by the Rev. David
Christie, Annie daughter of Mr. and Mrs.
Geo. Mavor of Glass, Aberdeenshire,
Scotland, to Arthur Henry (Dick), only son
of Mr. and Mrs. H.A. Turpin of Watford,
Herts, England.

HALTON HERITAGE TODAY

The Halton Regional Museum at Kelso
issued the first edition of a new quarterly
newsletter for the Winter of 2008. It is a
virtual newsletter, being web based. You
can request a copy from museum@halton.ca

Georgetown Herald, 3 March 1943

8200 new ration books were
distributed in Georgetown and
Acton districts, in the period from 19th
February to the 24th, inclusive. In
Georgetown, the new Municipal
building at the corner of Mill and
Main Street, was the distributing
centre, and 4300 books were

handed to citizens of this community
and district.



ESQUESING HISTORICAL SOCIETY

2007 ARCHIVAL REPORT

John Mark Rowe, Archivist

ARCHIVAL ACTIVITIES

Details of Archival activities can be read in the original report. It is a summary of Archives news published in this newsletter over the past year.

2007 ACCESSIONS

The Archives had donations from Nancy Mason Paris, *Coupeville*, Washington, USA; Karen Hunter, *Cheltenham*; Marna Brearly, *Georgetown*; Harry and Helen Hope, *Georgetown*; John Reynolds; Mike Harley, *Acton*; Ada Shillinglaw-Deans, *Langley*, BC; Mrs. Jean King, *Georgetown*; Mr. and Mrs. Don Livingstone, *St. Catharines*; Knox Presbyterian Church, *Georgetown*; John Sommer, *Georgetown*; Hazel Arnold, *Georgetown*; Kay Dills, *Acton*; Mary Glendinning, McGillivray Architect; Art Rice, *Terra Cotta*; Trevor Raymond, *Georgetown*; Nan Hurst, *Acton*; David Naylor, *Georgetown*; Estate of Dorothy Hill, *c/o Bob Hill, Delhi*; Mac Sprowl, *Acton*; Mrs. Lesley Bridgeford, *Tiverton*; Claudia Alden Case, *San Carlos*, CA; Ken Johnson, BC; Ismey Bird, *Milton*.

EXTENT OF HOLDINGS

Textual – General Collection:	44 linear metres
Textual - Restricted Collection:	0.64 linear metres
Textual - Newspaper Collections:	14 linear metres
Cartographic Collection:	241 items
Architectural Drawings:	136 sets
Photograph Collection:	17 664 images (processed)
Digital Images Collection:	15 000 images (processed) est.
Audio-Visual Collection:	1 linear metre
Negatives Collection:	23 linear metres (mostly un-processed)

WEBSITE USE – esquesinghistoricalsociety.ca

Our website had 7131 visits over the past year, looking at 16912 pages. These visits originated in Canada 54% of the time, followed by the United States 24% of the time. Ten percent were unidentifiable followed by Sweden, Great Britain, China and Australia. The unique visitors to the site (once only) were 87%.

Our exact address was typed in by 35% of users while 41% found us through Google. Besides searching for our address directly, the most popular search phrases were Limehouse (3.36%), Terra Cotta Inn, Ballinafad, Esquesing, Terra Cotta, Glen Williams, Speyside, Acton Free Press and Georgetown Herald (0.64%).

There were 362 downloads from the site, 58% of which were for our Archival Table of Contents. Next in popularity was the book list at 31.5% and third was the newsletter at 10.4%

The most popular months of use were October, followed by May with the three summer months showing consistent high usage. The three winter months were lowest.

Inquiries received by topic:

INQUIRY	INQUIRY
Fire insurance map copyright	John and Mary Nicklin of Acton
Membership; family history	7 & 9 William St., G'town
History of Fairgrounds Park, G'Town.	Avian Aircraft
Swackhamer / Denny families	sent painting of G'town Station, by Jack Nieuwhof, picked up at thrift shop in BC
Kennedy / Williams families; visit to Georgetown	Ezra Adams
Dayfoot Boot factory	Ghost in Wesleyan Church
Kennedy/Higgins families	Acton book
Moore farm aeroplane disaster.	Sylvia Forster
Origin of "hungry hollow"	Georgetown Victorias soccer team
Miller/Stull families	Watkins family
Jewish Farm School	Adams family
Offer of digital print of Forster home in Glen Williams and family tree	Beecham House / McKay family
Joseph Gibbons & hotel	Ernie Martin estate
Family of Sam Armstrong	Janet Campbell: A Tale of Upper Canada by Alpheus E. Byerly.
Membership and Williams family	Williams family
Petch family	Gwen Williams
Milton HS inquiry about photo prices.	William Ashenhurst
EHS00028	GTR station designers
Samuel & Catherine Armstrong	Penstock at Dolly Varden
William & Mary Trotter	Torrance Beardmore
Denny Family	Photos of Acton School Board 1927 to donate
Photos of Glen Williams for housing development	Large Church bible from St. Paul's, Norval
Use of Beek family photos	65 Maple Ave history

The EHS keeps a record of inquiries made and the name and address of the interested party. If any of the above mentioned topics are of interest to you, we will attempt to contact the person and ask for permission to share their address with you. Please note that most inquiries are by e-mail and addresses do expire.

The Esquesing Historical Society Archives are housed within the Georgetown branch of the Halton Hills Public Libraries. We would like to thank the Library Board and staff for their support and cooperation over the years. We would especially like to thank Geoff Cannon for his support and hard work on our behalf over two decades.

J. M. Rowe,
Archivist

Georgetown Herald, April 17, 1912
Esquesing Council
Nearly \$200 Paid out for Shovelling Snow

<u>Name</u>	<u>Location</u>
Allan, Joseph	Town Line at Terra Cotta
Anthony, W.H.	27 Sideroad
Campbell, George C. and others	Shovelling snow in county road system
Chisholm, L.	27 Road Division
Coulter, John	Town Line at Terra Cotta
Fisher, Thomas J.	117 1/2 hours at 15¢ per hour, Division No. 26,
Given, David	Shovelling snow in county road system
Graham, George	County Road, 7th Line
Hagyard, Stephen	48 hours at 15¢ per hour
Leslie, George	Shovelling snow in county road system
McClure, A.	Town Line at Norval
McColl, D.J.	Division No. 26
McColl, D.J.	County Road
McDonald, Ronald	Road Division 21
McDonald, Ronald	Division No. 20
McDonald, Ronald	County Road
McDougald, Duncan and others	Second Line
McLarty, John	36 hours at 15¢ per hour
Price, Harding	County Road, 27 Sideroad
Scott, W.W.	Division 34
Sprowl, Alex	Shovelling snow in county road system
Stark, Robert	Division No. 19
Thompson, J.R.	16 hours shovelling snow
Tucker, Joseph	Check Line
Walter, John	County Road Division near Acton



Wes Rutledge uses his team and blade to clear King Street, Terra Cotta, just outside the General Store in 1958.

EHS 1377

Revised AGM Financial Statement

Esqueuing Historical Society
Annual Financial Statement - January 31, 2008

Income

Balance on Hand - January 31, 2007			\$ 13,884.48
Ontario Heritage Development Grant	\$	378.00	
Membership Fees	\$	697.48	
Publication Sales - Georgetown Book	\$	3,762.11	
Other	\$	863.06	
Archive Sales - Photo Reprints	\$	153.23	
Donations	\$	117.02	
Royalties - Access, The Canadian Copyright Licensing Agency	\$	183.55	\$ 6,154.45
Total Income			\$ 20,038.93

Expenses

Administration	\$	255.62	
Newsletter	\$	637.15	
Rent - Meeting Halls	\$	620.00	
Honorarium - Speakers	\$	342.09	
Membership Fees - Ontario Historical Society, Archive Assoc. of Ontario, Friends of Ontario Archive	\$	122.70	
Entrance Fee - Leathertown Festival	\$	55.00	
Publications Purchased for Resale	\$	30.00	
Advertising - Halton Hills Community Guide	\$	145.99	
Archive Costs - Supplies	\$	666.50	
- Photo Acquisition	\$	102.97	
Projector	\$	1,526.43	
Total Expenses			\$ 4,504.45
Balance on Hand - January 31, 2008			\$ 15,534.48

ACTON FREE PRESS

April 1922

An ice storm had power off from Friday at 6:30 until Saturday at 4:30. All the factories in town were closed. Business at the sole leather tannery of Messrs. Beardmore and Co. is growing rapidly... capacity to be increased to 1000 finished sides per day.

The Merchants Bank sign was replaced on Saturday with "Bank of Montreal".

-6 April, 1922

A special meeting was called by council Thursday evening with a request that citizens attend to show which route they desired the provincial highway to take through Acton... 13 April, 1922

Mill Power of Black Creek

By the 1850s the settlement era of Esquesing Township was ending. As villages like Limehouse were established the pioneer era gave way to rural industries like lime manufacturing, wood processing, grain milling, and woolen production.

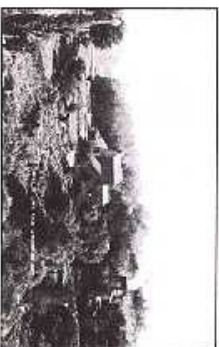
Mills of various types were common in rural industries and provided employment for many residents. During the last half of the 1800s, several mills were in existence on Black Creek between the mill pond and the Grand Trunk Rail Line.

John Newton, the first Postmaster of Limehouse, operated several mills on Black Creek just downstream of the mill pond. A sawmill, the remnants of which are seen on either side of this bridge, was built by Mr. Newton in the 1850s and remained in operation until the fire of 1893. Lumber produced here would have been used as construction material and scrap wood as fuel for burning lime in the kilns on this property.

Newton also operated two other mills and a fireproof paint company downstream of the mill pond. One mill produced woolen fabrics and the other produced cement. It was Newton's company that provided cement for the bridges and other works during the building of the Grand Trunk Railway. Remnants of the cement mill are located off the Black Creek Sidetrail just downstream of this location.

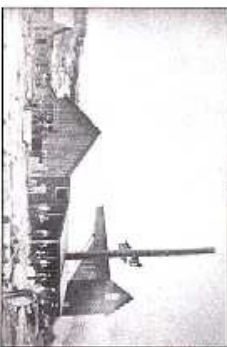
Nature Reclaims Black Creek Valley

As the Village of Limehouse grew and lime production improved with new technologies, significant amounts of natural resources were consumed. By the time the lime industry closed around 1915, the surrounding environment looked nothing like what the first residents found. Forests were clear cut and numerous quarries dotted the landscape. Operation of the mills and mill pond changed the dynamics of Black Creek. Today the environment has naturally regenerated into a diverse system of forests, wetlands, and meadows that have been classified as an Environmentally Significant Area by CVC and the Regional Municipality of Halton.



(Above) A view of the sawmill looking south from the Grand Trunk Rail Line. Smoke can be seen billowing from the draw kiln.

(Below) A view of the sawmill looking northwest. Note the timbers on the ground ready to be processed by the mill.



(Right) A view of the sawmill (left centre of photo) looking southwest from the Grand Trunk Rail Line. Smoke from the draw kiln is seen in the centre of the picture. Note the lack of trees from clear cutting for timber and wood to fuel the kilns.



(Right and Below) Present day images illustrating the significant natural environment along Black Creek.



▶ and the Bruce Trail.



LIMEHOUSE CONSERVATION AREA

