

PARENT CO-OPERATION ASKED FOR BY SCHOOL HEADS

Parents of High School Students to Receive Letter Explaining the Grading System.

In an effort to raise the educational standard of the Downers Grove high school, Samuel S. Vernon, principal, is this week sending out letters to the parents asking for their cooperation.

To the Parents of the High School Students:

It is the desire of the principal and the teachers of the high school to make this year count the most possible educationally for the boys and girls of Downers Grove.

1. See that the student leaves home in plenty of time to reach school by 9:00 a. m. and 1:15 p. m. If a pupil enters late it interrupts the work of a large group.

2. See that the student is in school every day that he is physically able. Pupils cannot be allowed the privilege of extra attention necessary for making up work missed unless their absence has been unavoidable.

3. Discourage movies, dances, parties and other social affairs except on Friday and Saturday nights. There is no student in the high school who does not need to do home work at least four nights a week.

4. Ask to see the report card of your boy or girl. Report card are issued on the Wednesday following.

SPECIAL ASSESSMENT NOTICE

Village of Downers Grove, Illinois, constructing and laying a tile pipe sanitary sewer, etc. in HIGHLAND AVENUE.

SPECIAL ASSESSMENT NO. 56

NOTICE IS HEREBY GIVEN that the Council of the Village of Downers Grove, performing the duties of a Board of Local Improvements, has filed its certificate of cost and completion in the County Court of DuPage County, Illinois, and has asked the Court to fix a date for the final hearing on said certificate.

All persons desiring may file objections in said Court before the day last above mentioned and may appear on the hearing and make their defense.

Dated Downers Grove, Illinois, this 20th day of October, A. D. 1922. WALTER C. BARBER, Mayor.

Wm. Bender, Chas. Haller, H. W. Bryce, I. G. Heardt, Commissioners. Council of the Village of Downers Grove, DuPage County, Illinois.

SPECIAL ASSESSMENT NOTICE

Village of Downers Grove, Illinois, constructing and laying a tile pipe sanitary sewer, etc. in LINSOTT AVENUE.

SPECIAL ASSESSMENT NO. 53

NOTICE IS HEREBY GIVEN that the Council of the Village of Downers Grove, performing the duties of a Board of Local Improvements, has filed its certificate of cost and completion in the County Court of DuPage County, Illinois, and has asked the Court to fix a date for the final hearing on said certificate.

All persons desiring may file objections in said Court before the day last above mentioned and may appear on the hearing and make their defense.

Dated Downers Grove, Illinois, this 20th day of October, A. D. 1922. WALTER C. BARBER, Mayor.

Wm. Bender, Chas. Haller, H. W. Bryce, I. G. Heardt, Commissioners. Council of the Village of Downers Grove, DuPage County, Illinois.

the close of each six weeks period of school. Take an interest in the grades shown on this card.

5. Call and see the school in operation. Please do not come only when you are asked to come because of some misunderstanding. We want you to visit often. We can both profit by such visits.

Accompanying this letter is the plan of grading used in this high school. It is an attempt to grade pupils according to the general class or group in which they belong, and is aimed to get away from the numerical grading system deemed by all educators to be unfair.

Be assured of our most sincere interest in the welfare of your boy or girl.

Plan of Grading in the Downers Grove High School.

The following qualities are observable in the high school student and can be made the basis for deducting a valid estimate of progress in education:

(1) Scholarship; (2) Initiative; (3) Attitude; (4) Cooperation; (5) Individual improvement.

1. By scholarship we refer to the pupil's ability and skill in the comprehensive use of the subject matter presented.

2. By initiative we refer to those spontaneous qualities that reveal the student as a group leader and efficient student.

3. By attitude we refer to the pupil's apparent point of view in matters vital to his education and to the success of the high school.

4. By cooperation we refer to the pupil's effort and ability to stimulate and contribute to the group accomplishment.

5. By individual improvement we refer to the pupil's progress in overcoming weakness of personality, objectionable habits, poor penmanship,

and other difficulties.

The following letters are used to designate grades—A, B, C, D, E, F, the last being the failing grade.

GRADE A— 1. Scholarship—exceeding the expectations of the instructor. 2. Initiative—Contributions exceeding the assignment. 3. Attitude—positive benefit to the class. 4. Cooperation—forwarding group activities.

5. Individual improvement—actual and noticeable. GRADE B— 1. Scholarship—accurate and complete.

2. Initiative—stimulation some desirable achievements. 3. Attitude—proper and beneficial.

4. Cooperation—effective in group work. 5. Individual improvement—showing marks of progress.

GRADE C— 1. Work in general of medium quality.

2. Work quite strong in one or more items but weak in others. GRADE D—(This grade might be produced by any variety or combination of weaknesses as the definition suggests).

1. Scholarship—barely meeting assignments. 2. Initiative—uncertain, not usually manifest.

3. Attitude—not objectionable, usually neutral. 4. Cooperation—not positive or effective.

5. Individual improvement—slight, not positive. GRADE OF F—

1. This is a failing grade and since it may result from any number of weaknesses is not defined.

Thought for the Day.

The highest price we can pay for anything is to need it, the next is to have it, and the last is to use it.

GIRL'S PHYSICAL CULTURE LEAGUE ELECTS OFFICERS

The girl's Physical Culture league opened the 1922-23 season with a business meeting in the high school gym Monday night, October 16.

Officers for the ensuing term were elected as follows:

Mrs. John R. King, President. Miss Irene Bryan, Vice-President. Miss Grace Wheeler, Secretary. Miss Helen Fisher, Treasurer. Mr. Reeve, high school coach, has promised to coach the girls this year and they are looking forward to a successful season.

All members and those who wish to become members are invited to the high school next Monday night.

CHIMNEY FIRE AT THE REMINGTON HOME

A chimney fire at the home of Prof and Mrs Remington called the fire department early last evening. The blaze was extinguished in a few minutes, no water being necessary.

ARTHUR J. PATTON FLORIST

Formerly John Gollan Greenhouses Your Patronage Solicited Wedding Bouquets Funeral Work Phone 210-J

SAY--

Are you tired of buying records for the Victrola?

Are you sick of experimenting with all kinds of needles from a hedge thorn to a diamond crystal?

A Radio

OUTFIT IS THE ANSWER

First cost is last cost.

Finest of material and workmanship plus courteous service is our motto.

P-W Battery Service

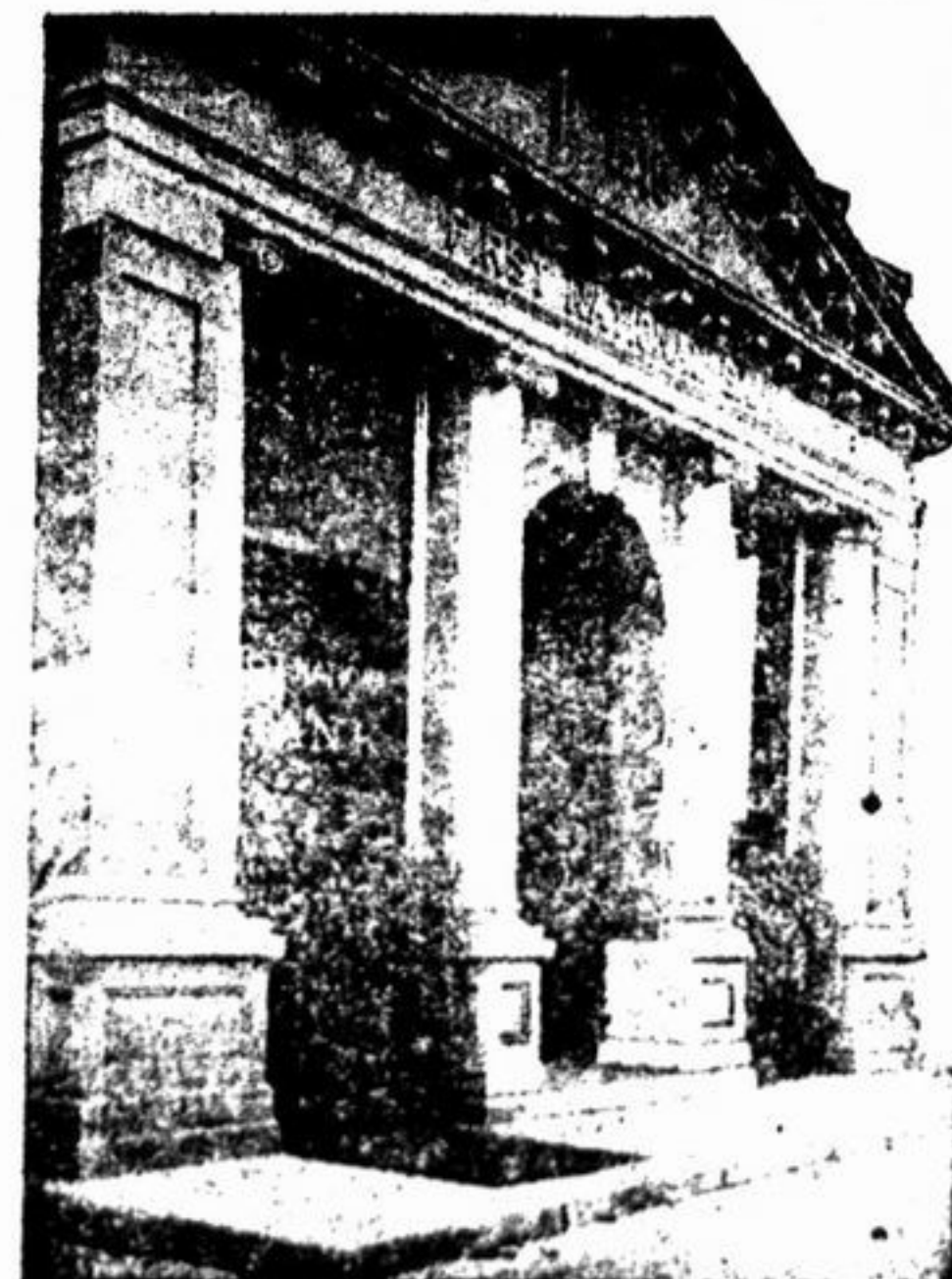
97 S. Main St. Downers Grove 234-W Phones 65-J

Personality!

Nothing can develop personality as thoroughly and beautifully as dramatic training. Classes will be held on Mondays beginning October 22. For interview phone 416-M.

Edna Louise Fitch

READER and TEACHER of EXPRESSION



WHY IS IT RICH MEN'S

acts attract attention? Always make the front page? The answer is—Money is the Measure of Success—People want the recipe.

The first ingredient is A BANK ACCOUNT!



FIRST NATIONAL BANK

Downers Grove, Illinois.

TRY A CLASSIFIED AD.

FRESH GROCERIES and FAIR PRICES bring customers to OUR STORE. Includes illustration of a man with a grocery bag and text: FRUITS and VEGETABLES.

We would not sell a single thing to our customers we would not place our own table in our own homes. We put only pure, healthful food in our store; so this is the only kind you can buy from us.

SPECIAL FOR SATURDAY ONLY 100 lbs. Brookfield Sausage at, per lb., 24c

A Balloon Given Free With Each Box Purchased

- Pot Roast, per pound 22c
Pork Loins, small and lean, per pound 28c
Fresh Pork Shoulder, per pound 17c
Spare Ribs, per pound 17c
Veal Shoulder, per pound 24c
Leg o' Lamb, per pound 32c
Boneless Smoked Butts, per pound 33c
Boneless Corned Beef, per pound 15c
Armour's and Swift's Zox Bacon, per pound 45c
Spring Chickens for roasting, per pound 30c
Pure Maple Syrup, 2lb 8 oz can 85c
Pure Maple Syrup, 1lb 2 oz can 45c
Acme Pancake Flour, per package 12c
Republic Tomatoes, No. 3 can 20c
Monarch Sifted Early June Peas, per can 20c
Logan Pumpkin, No. 3 can 15c
Heintz Spaghetti, per can 18c
Monarch Blackberries, No. 2 can 30c
Sunbeam Baked Beans, per can 10c
Yellow Corn Meal, 10 pounds 25c

NORTHSIDE GROCERY & MARKET STEWART M. BURNS, Proprietor Telephone 2

Quality Counts Here

36 inch White Dotted Fine Curtain Grenadines, a wonderful value for per yard 39c Good Feather Bed Pillows at 98c and \$1.69

45 inch white table oil cloth, per yd. 38c

45 in. storm serge, all wool, navy, brown, red, black, spec. values \$1.69

MUNSINGWEAR UNION SUITS —For Women—

Low Neck, no Sleeves, tight knee, fine wool garments @\$2.69

Low neck, no sleeves, ankle length, fall wt. @ \$1.79

Low neck, elbow sleeves, ankle length, fall weight, Misses @ \$1.85

High neck, long sleeves, ankle length @ \$1.00, \$1.35, \$1.59, \$1.69 and \$1.79

Prompt Service | Grocery Department | Quality Foods

- No. 1 can Tomato Pulp, per can 10c
Beckiths Preserved Figs, jar 35-60c
Sweet Cider, per gallon 60c
Maple Sugar, 16 oz. cake 42c
Pure Maple Syrup, pts, 55c; qts. 95c
Libby's St. Mix. Pickles, 2 cans 25c
5lb bag Yellow or White Cornmeal, per bag 25c
5lb bag Old Fashion Buckwheat 40c
Fancy New Large Smyrna Figs, 40c
Fancy Large Quinces, 2 pounds 25c
Fancy Large Grape Fruit, 2 for 25c
2 cans Plymouth Rock E. J. Peas 25c
Burnetts Extract, 5 assorted flavors, Trial package 25c

Lehmann & Michels Store Telephones 177 & 178