

PROF. BOWMAN ACCEPTS PASTOR- ATE IN THE EAST

County Superintendent of Schools is Called as Pastor of Zion Church, Pittsburg.

Prof. C. B. Bowman, county superintendent of schools, and mayor of the City of Naperville, has accepted a call to the pastorate of the Zion Evangelical Church, Pittsburg, Pennsylvania. A representative of that congregation came to Naperville last Thursday to present the call in person and arrangements were made for the pastorate to begin on Sunday, July 10th.

Mrs. Bowman and children will

leave early in June and visit in Pennsylvania. Professor Bowman will leave the first week in July for his new work.

The office of County Superintendent of Schools which Prof. Bowman will resign, will be filled by appointment by the Board of Supervisors. The office of mayor will be filled by the City Council, and under the rules governing, Commissioner Grush will become mayor.

The call to the pastorate in Pittsburg came unsolicited to Mr. Bowman and was a surprise to him. His many friends in Naperville and in the county will be reluctant to give him up. His services have been valuable in this community. However, he will take with him the best wishes for a successful career as he re-enters the service of the Christian ministry.—Naperville Clarion.

Eyes of Night Birds Large.

The eyes of the birds that fly by night are usually nearly double the size of those that go abroad by day.

Whale Meat Resembles Beef.

The meat of the whale extends in great boneless masses, in uniform quality, from the base of the skull to the tail fin. In appearance it is similar to beef, but is somewhat coarser in texture. Its flavor is said to suggest venison. One of the best "cuts" of the whale is the heart, which weighs 3,000 pounds.

Love Works Miracles.

The cure for all ills and wrongs, the cares, the sorrows and the crimes of humanity, all lie in the one word "love." It is true the divine vitality that everywhere produces and restores life to each and every one of us, it gives the power of working miracles if we will.—L. W. Child.

The Chinese Years.

Like our own leap year, every third year in China is longer than its predecessors, but the Chinese add a whole month, instead of an extra day, to make up for the time lost, according to their calculation of the calendar.

COUNTY FARMERS AT SPRINGFIELD FOR LEGISLATION

C. V. Gregory and D. O. Thompson of Wheaton Talked to the Representatives.

Several farmers from DuPage County were among the more than five hundred members of the Illinois Agricultural Association who went to Springfield last Wednesday in support of Senate Bills Nos. 283 and 284, one of which proposes to put the Chicago Board of Trade under public control, the other of which would restrict speculation in grain "futures." The demonstration is declared to be by far the greatest ever given in support of legislation by Illinois farmers.

Wearing white badges naming their counties and with the inscription

"I. A. A., 110,000 members of 90 counties—pass S. B. 283 and 284," the delegates packed the senate chamber from noon until midnight. They were received between sessions by Gov. Small.

Three counties had more than sixty farmers at Springfield, while ten counties had fifteen or more. About sixty counties, from every corner of the state, were represented.

The DuPage County Farm Bureau members who attended were: E. A. Amacker, Ed. Peterson, A. R. Greene, D. O. Sayer, D. D. Barnard and E. A. Carnecross. The leading talks in favor of the bill were made by C. V. Gregory, editor of the Prairie Farmer and D. O. Thompson, secretary of the I. A. A., both of Wheaton. Herman Steen, assistant editor of the Prairie Farmer and E. L. Bill of the Publicity Dept., of the I. A. A., also from Wheaton, were in attendance.

Burying the Hatchet.

To bury the hatchet means to let bygones be bygones. The phrase originated among the North American Indians, who were commanded by the "Great Spirit," when they smoked their calumet or peace pipe, to bury their hatchets, scalping knives, and war clubs in the ground, so that all hostile thoughts might disappear. It was well-known that the presence of war weapons leads to war at times.

How Lampreys Lay Eggs.

Lampreys are eel-like residents in the ocean that run into the fresh water at the mouth of rivers in the spring and build the nest in which their eggs are deposited. They pick out the pebbles in the bottom of the river, using the suction power of their large mouths to dislodge the stones, and deposit eggs in the spot selected.

Helps the Circulation.

One of the largest New York hotels supplies each of its guests, who average 2,000 a day, with a free copy of a morning newspaper.

POTTER MFG. & LUMBER CO.

EAST END OF RAILROAD ST.

OFFICE AND FACTORY

LUMBER YARD ENTRANCE—E. CURTISS ST.

NOW IS THE TIME!

TO BUILD THAT HOME OR MAKE THOSE NEEDED REPAIRS AND IMPROVEMENTS. THE BUILDING SEASON IS ON NOW. DON'T WAIT! LUMBER AND OTHER BUILDING MATERIAL PRICES ARE LOW, LABOR IS NOW CHEAPER.

So Why Delay?

OUR FACTORY AND LUMBER YARD ARE HEADQUARTERS FOR EVERYTHING NEEDED IN HIGH GRADE LUMBER, MILLWORK AND BUILDING MATERIAL.

Before Buying.

CALL ON US AND WE WILL GLADLY MAKE AN ESTIMATE ON ANY MATERIAL NEEDED.

SHINGLES
LUMBER
DOORS
WINDOWS
SCREENS
MILLWORK
FLOORING
ROOFING
SIDING
MOULDING
LATH
NAILS
ETC., ETC.

CEMENT
BLOCKS
BRICK
SAND
GRAVEL
CINDERS
LIME
PLASTER
TILE
COAL
COKE
WOOD
ETC., ETC.



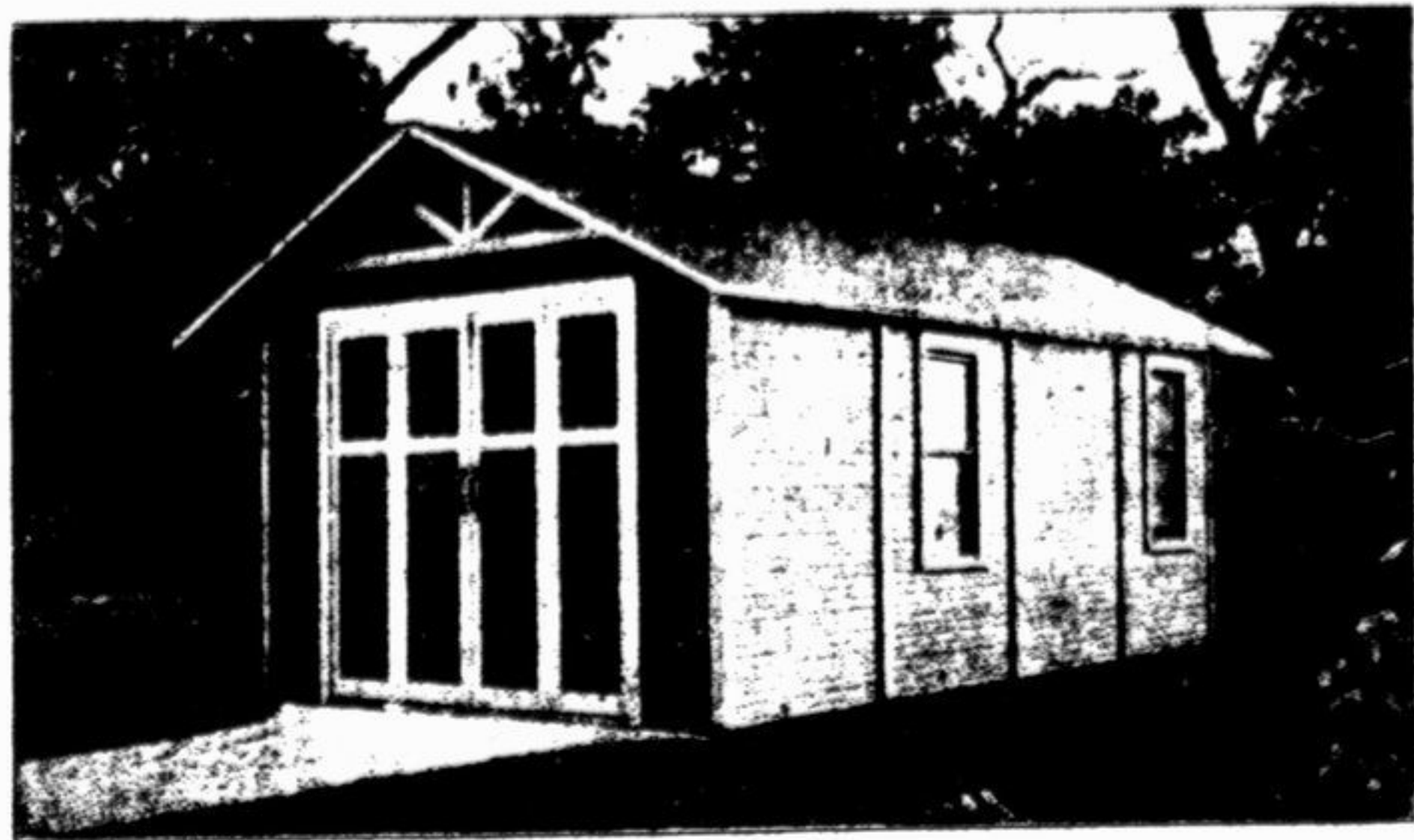
YOU WILL MAKE NO MISTAKE IN PLACING YOUR ORDER NOW FOR YOUR WINTER SUPPLY OF OLD BEN COAL. PRICES ARE LOW AND DELIVERIES CAN BE MADE AS YOU WANT THEM THIS SUMMER.

Ask Us About Carbocoal

THE MANUFACTURED HARD COAL — BETTER AND CHEAPER THAN ANTHRACITE.

Potter Redybilt Portable Poultry Houses, Garages, Cottages, Etc.

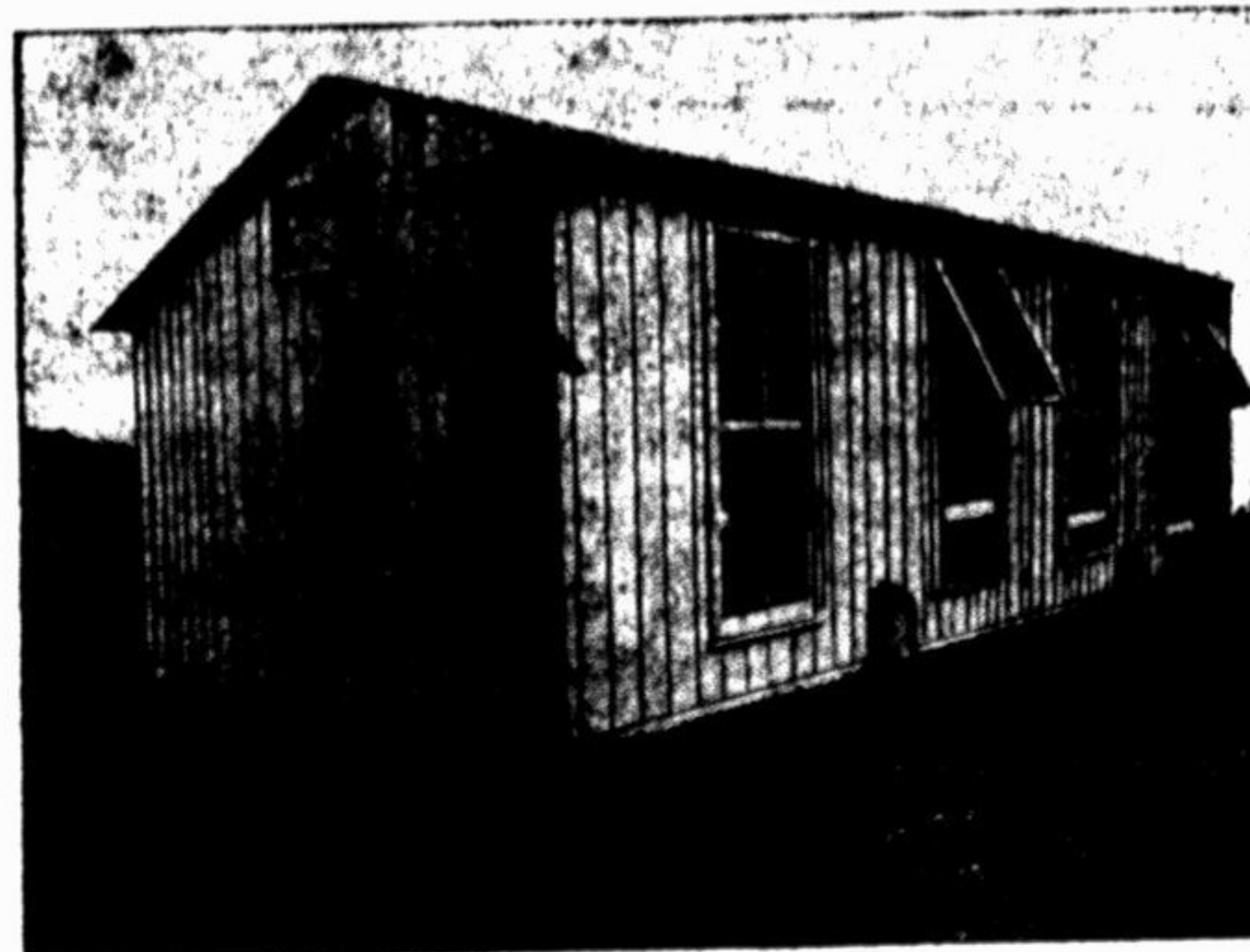
HAVE STOOD THE TEST OF TIME. HAVE BEEN ON THE MARKET FOR YEARS AND ARE GIVING SATISFACTION TO THOUSANDS OF USERS.



This Potter Garage is made right from the ground up for quality and price

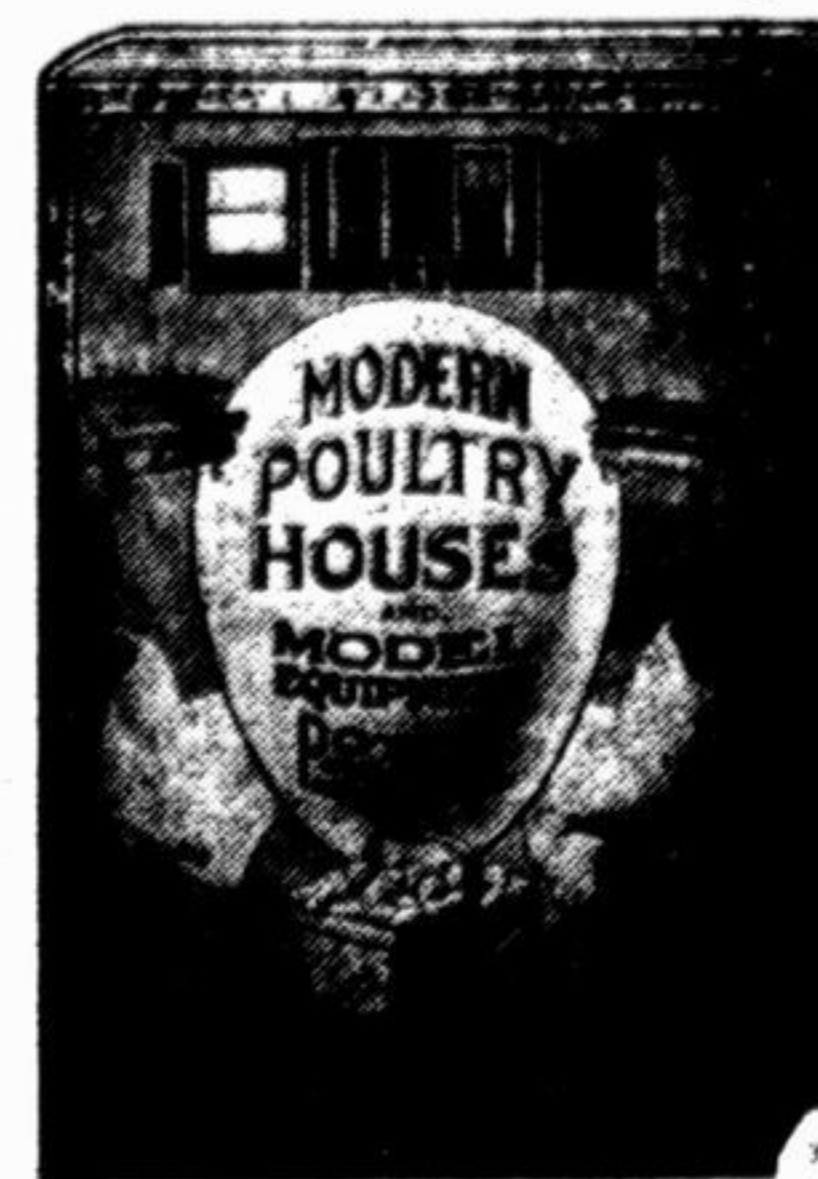
YOU CAN NOT DO BETTER. GET OUR PRICES ON ANY SIZE WANTED EITHER GABLE OR SHED ROOF.

Potter Portable Redybilt Poultry Houses and Equipment are the world's Standard and Best



OUR "REDYBILT" HOUSES ARE MADE IN MANY STYLES AND SIZES TO SUIT EVERY REQUIREMENT.

Our big 128 page catalog shows our full line
If you cannot call at our office just send for your copy



POTTER MFG. & LUMBER CO.

Manufacturers and Dealers
BUILDING SUPPLIES, LUMBER, COAL, MILLWORK

"REDYBILT"

Portable Garages, Poultry Houses, Cottages, Etc.

When in need of Building Supplies and Our Service call at our office or

PHONE 15