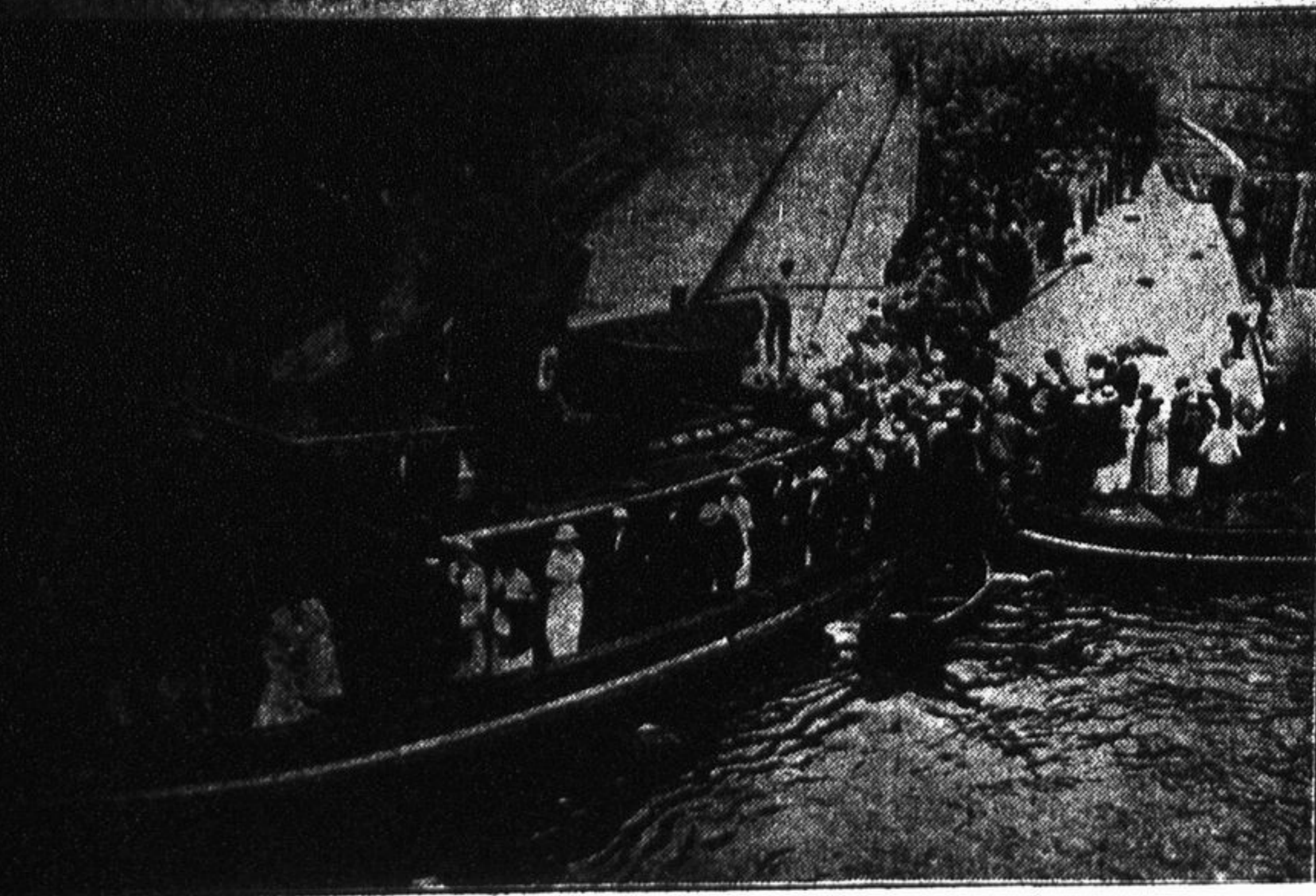


172 LIVES ARE LOST IN WORST MARINE DISASTER IN HISTORY



172 LIVES ARE LOST IN WORST MARINE DISASTER IN HISTORY

Steamer Eastland, With 2,500 Pleasure-Seeking Passengers on Board, Suddenly Turns on its Side at Its Dock in the Chicago River, Trapping Hundreds.

Nation, State and City Join to Fix the Blame for Catastrophe—Rescuers Work Heroically Night and Day Bringing Out Bodies of Victims Who Were Suffocated or Drowned.

172 LIVES ARE LOST IN WORST MARINE DISASTER IN HISTORY

Chicago, July 26.—"Somebody made the wrong turn," says a spokesman for the Chicago Board of Health, which is leading the investigation of the worst marine disaster in modern history.

Dead May Reach 1,400

Estimates of the total number of dead based on the recovery of 817 bodies are still uncertain. Of the passengers and crew, reported to be a few more than 2,500, 900 have reported as safe.

No Unparalelled Tragedy

Universally in the heart of a great city, with crowded streets and street cars, a disaster of the magnitude of the Eastland tragedy has never before occurred.

No Warning, No Escape

The better part of them, with women and children outnumbering the men, were packed without a chance for escape on the uppermost deck.

Two Big Questions

Answers to the two big questions which have arisen from the Eastland tragedy are being sought by the board of health.

Men, Women and Children Jammed in a Death Tangle

Men, women and children jammed in a death tangle, the "grand staircase" gave way. Thus the main escape from the entrapping decks was blocked.

Sea of Bobbing Heads

On to the starboard side climbed the handful—perhaps 200—who had been fortunate enough to be close to the upper rail and who had the presence of mind to cling to it.

Was She Overcrowded?

R. H. McCreary, navigation inspector, says he turned away all prospective passengers after his automatic counter registered 2,500.

Panic on Roosevelt

After an inept panic aboard the Roosevelt had been checked by the vessel's officers, who kept the passengers below decks until their excitement had abated, the second excursion boat was turned into a temporary morgue.

First Listing Ignored

At first the Eastland heeled slowly, almost imperceptibly. Harry Pederson, the captain, stood on the bridge shouting routine orders.

Women Slide into Water

It was a hill there was no climbing, a hill that grew steeper and more impossible with each instant. There was silence for a second as the deck was swept clean.

Two Big Questions

Answers to the two big questions which have arisen from the Eastland tragedy are being sought by the board of health.

Dr. F. LeBlanc, Physician and Surgeon, Office and residence 77 North Forest Avenue, Downers Grove, Illinois.

J. H. Robinson, M. D., Physician & Surgeon, Office Farmers & Merchants Bank Bldg., Phone 106-M.

Edgar D. Otto, Engineer-Contractor, Surveys, Plans, Estimates, Building Construction, Phone 168 W 1, Downers Grove, Ill.

Mary S. Diener, Graduate Nurse, Ev. Deaconess Hospital, Phone 98-M, Downers Grove, P. O. Box 21 Res. 109 Ross Ct.

Cut Flowers, Sweet Peas, Roses, Bouquets for Weddings and other Occasions, Set Pieces for Funerals, C. V. Wolf, Tel. 136-J, 153 Prairie Ave.

L. Klein, Meat Market, Fresh or Salted Meats, Fish or Game in season, Imported and Domestic CHEESE, Phone 16, 32 S. Main St.

Martin F. Pozdal, Painter, Paper Hanger and Decorator, By Day or Contract, Country work a specialty, My figures are right and my work is Guaranteed, address P. O. Box 349, Res. 235 E. Franklin Street, Downers Grove, Illinois.

T. E. Brooks, Auto Moving, Packing, STORAGE, Best—100 years in business, Tel. 15, Res. 186, 13 W. Railroad St.

W. H. Blodgett, Fire and Tornado Insurance, Companies the Best—100 years in business, Agent for the Traveler's Insurance Company, Life, Accident and Health, RENTING, TELEPHONE No. 7.

A. P. Mehren, Electrical Contractor, Heating Apparatus, Lamps, Fixtures, Houses Wired, 19 Railroad St. Phone, office 62-R; res. 70-W.

To Reach Home People Advertise in The Reporter

Wash-Silk Blouses, Models of pussy-willow silk are shown among the washable silk blouses. They come in pink, maize, pale blue, white, navy, brown and black.

ORCHARD GLEANINGS, DORMANT PRUNING IN FAVOR, Work on Considerable Scale During Summer Season is Not Advisable—Difficult to See.

In practice, summer pruning, on a considerable scale, is not advisable. It is difficult to see, when the leaves are on, just which branches should be removed, except in the case of dead branches.



Pruning Peach Tree in Dormant Season.

branches when the leaves are on, in spite of the fact that the removal of leaves debilitates a tree, if done early in the summer the injury is less than after the summer growth is nearly completed.

SPRAYING IS NOT DIFFICULT, Know Enemy You Are Fighting and Mix Materials Properly—Haphazard Work Will Not Do.

It does not pay to spray, as spraying is done by half of those who try it. Yet proper spraying is not difficult. Have first a clear idea of what you want to do.

RIGHT SITES FOR ORCHARDS, Well-Known Fact That Cold Air Settles to Lower Levels is Often Overlooked—Loss by Frost.

It is a well-recognized fact, though one too often overlooked in selecting sites for orchards, that cold air settles to the lower levels. For this reason it is often colder at the lower elevations than it is at higher points in the same locality.

See Help Fruit Trees, In a recent experiment at the Illinois station it was found that the bees in the neighborhood work principally on the outside rows of the orchard, and this, with other factors, are the probable cause of this part of the orchard bearing more fruit.

Pruning Bush Fruits, In pruning bush fruits the principal object is to shape the bush and do away with all unnecessary growth.

Check Wood Growth, Summer pruning has a tendency to check the wood growth and encourage the setting of fruit buds, and also to aid in their development and maturity.

But On Cedar Apples, While out of any cedar apple, or the like, on the orchard or out on the

Dr. F. LeBlanc, Physician and Surgeon, Office and residence 77 North Forest Avenue, Downers Grove, Illinois.

J. H. Robinson, M. D., Physician & Surgeon, Office Farmers & Merchants Bank Bldg., Phone 106-M.

Edgar D. Otto, Engineer-Contractor, Surveys, Plans, Estimates, Building Construction, Phone 168 W 1, Downers Grove, Ill.

Mary S. Diener, Graduate Nurse, Ev. Deaconess Hospital, Phone 98-M, Downers Grove, P. O. Box 21 Res. 109 Ross Ct.

Cut Flowers, Sweet Peas, Roses, Bouquets for Weddings and other Occasions, Set Pieces for Funerals, C. V. Wolf, Tel. 136-J, 153 Prairie Ave.

L. Klein, Meat Market, Fresh or Salted Meats, Fish or Game in season, Imported and Domestic CHEESE, Phone 16, 32 S. Main St.

Martin F. Pozdal, Painter, Paper Hanger and Decorator, By Day or Contract, Country work a specialty, My figures are right and my work is Guaranteed, address P. O. Box 349, Res. 235 E. Franklin Street, Downers Grove, Illinois.

T. E. Brooks, Auto Moving, Packing, STORAGE, Best—100 years in business, Tel. 15, Res. 186, 13 W. Railroad St.

W. H. Blodgett, Fire and Tornado Insurance, Companies the Best—100 years in business, Agent for the Traveler's Insurance Company, Life, Accident and Health, RENTING, TELEPHONE No. 7.

A. P. Mehren, Electrical Contractor, Heating Apparatus, Lamps, Fixtures, Houses Wired, 19 Railroad St. Phone, office 62-R; res. 70-W.

To Reach Home People Advertise in The Reporter

Downers Grove Woman's Club, Meetings every alternate Wednesday, afternoon, 2:30 p. m., in the Royal Lounge, except first and third Tuesday in each month in Morris hall.

Downers Grove Chapter, Daughters of the American Revolution, Hold a monthly meeting on the third Tuesday of each month in the homes of the members.

Maple Camp No. 22, M. W. A., meets the second Thursday of each month in Morris hall.

Grove Lodge No. 23, I. O. O. F., meets every Saturday evening at 8 o'clock in Masonic hall.

Library Association, Meets every first Thursday in the month in the Library, Mrs. J. M. Burns, President.