

Great Sacrifice Sale Now On Everything in the Store Reduced Three Weeks of Money Saving Prices

B. SCELFO, 29 S. Main St.

Everybody Should Join

The

First National Bank's

Landis Christmas Savings Club

The Landis Christmas Savings Club was a happy thought. The phenomenal success of this proves it performs a valuable service in the community.

The Great Advantage

of the

First National Bank's

Landis Christmas Savings Club

is the co-operative feature. It encourages many to do what few would accomplish individually. It proves the old maxim that in union there is strength. Members help themselves and help others at the same time. They are sustained in their efforts to save by the enthusiasm of the multitude and have the advantage of system and organization—which finds the highest attainment in a successfully conducted bank

Every person in DOWNERS GROVE should join our **Landis Christmas Savings Club**. It directly benefits members personally and at Christmas booms business for the merchants and helps the town morally and commercially

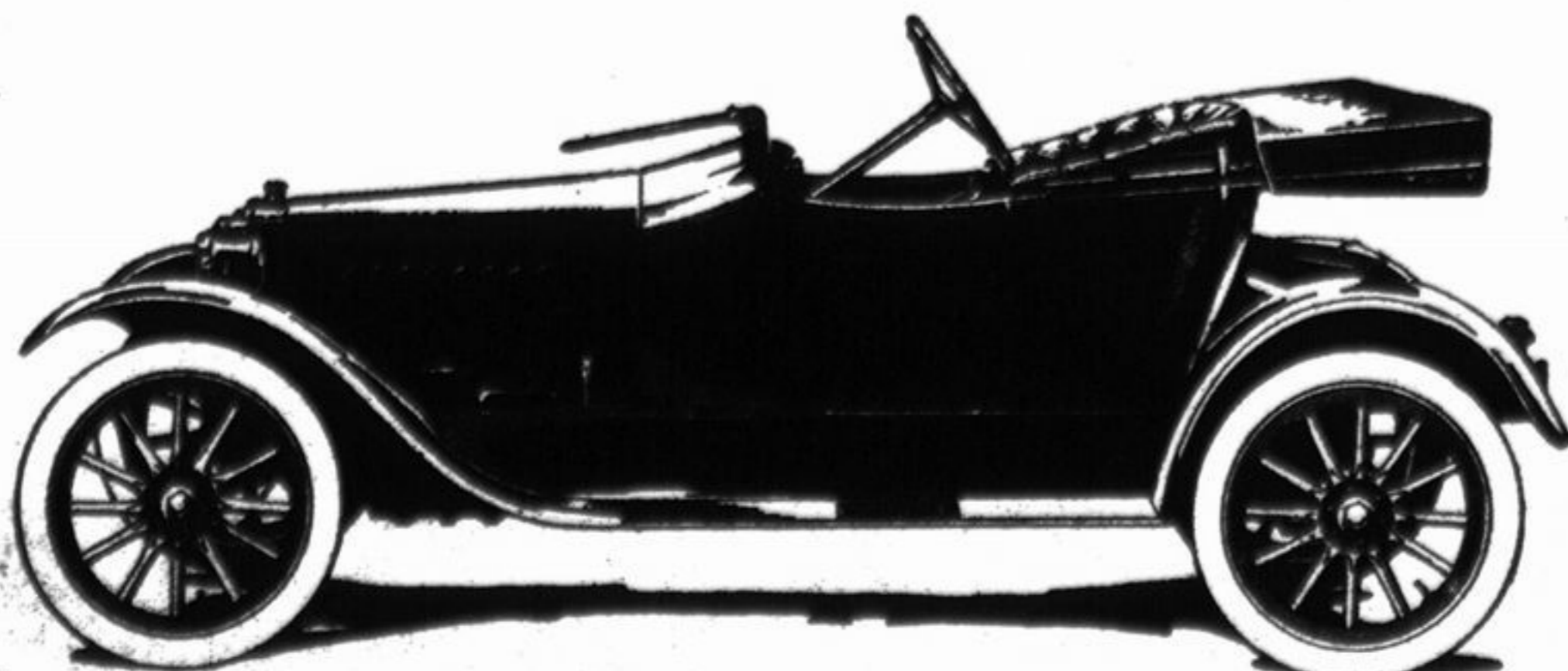
Become a Member At Once

and you will have both dollars and reasons for a Merry Christmas

FIRST NATIONAL BANK OF DOWNERS GROVE

J. W. HUGHES, Prest. SAM. CURTISS, Cashier

SAXON ROADSTER \$395 A Stylish Car



The New Saxon right up-to-the-minute. All good things on the SAXON, which have made it known all over the land. They Stand Up; they have proved it in millions of miles of driving. Half a cent a mile is the average cost of operation for the Saxon. Now is the time to place your order. Phone 183 and ask for demonstration.

ARTHUR KIDWELL

FIRST CHURCH OF CHRIST SCIENTIST.

Sunday service, 11 a. m.; Wednesday, 8 p. m.; Sunday school, 10 a. m. The reading room is open to the public on Tuesdays and Fridays from 2 to 4 p. m. The Bible and Christian Science literature may be read or purchased of the one in charge. Visitors are welcome.

CONGREGATIONAL CHURCH.

Paul G. Viehs, Pastor.

Sunday morning we shall observe the Lord's Supper. Service of praise with preaching in the evening. Bible school and men's class at noon. Evening topic, "Home Mission Opportunities That Summon Us," leader Miss Margaret Miller. Quarterly business meeting Wednesday, March 31. Easter, April 4.

ST. ANDREW'S EPISCOPAL CHURCH.

Rev. Howard Adams Lepper.

HOURS OF WORSHIP.

Beginners, Sunday School, 9:45 a. m. Morning Prayer and sermon, 11 a. m.

Sunday School for older scholars, 12:30 to 1:30.

Evening Prayer and address (until Easter), 7:30 p. m.

Monday night, Boy Scouts.

Tuesday night, Choir rehearsal.

Friday, evensong and meditation at 4 p. m.

All are earnestly invited to attend these Lenten evensongs, they are brief and meant to help us in our contest for spiritual supremacy. You are cordially welcome at any of our services.

THE BAPTIST CHURCH.

R. Wilbur Babcock, Pastor.

The regular services of the Baptist Church will be held as usual. Sunday school at 9:45 a. m.; Sunday morning worship, 11 o'clock; Sunday evening service, 7:30 o'clock.

Our prayer meeting is held on Wednesday evening at 8 o'clock. Everyone is very cordially invited to attend all of these services. You will receive a very cordial welcome.

LISLE CONGREGATIONAL CHURCH

Stephen R. Schieb, Pastor.

A good program was rendered to a large crowd of people on the evening of March 18. Everyone who attended was well repaid.

We desire to thank the people who helped make this program a success, as well as the people who patronized us and came to support us. We believe that our young people can make good in everything to which they whole heartedly put themselves. If you live anywhere near Lisle and are lonesome, come and affiliate yourself with a good bunch of good young folks.

Next Saturday night you can meet some of these young folks at the Lisle schoolhouse at a "Hard Time" social. Don't fail to come and have a good time.

Also remember next Sunday. Appropriate Palm Sunday sermon will be preached in the morning, and you are invited to worship with us. The other services will be as usual.

GERMAN LUTHERAN CHURCH.

Hold services in the Congregational church every second Sunday.

WALTER BURMEISTER, Pastor.

METHODIST EPISCOPAL.

James Freeman Jenness, Minister.

Sunday services: Class meeting at 10 a. m. Public worship at 10:30 and 7:30. Sunday school at 12 m. Epworth League at 6:30 p. m. Mid-week prayer meeting, Wednesday, at 8 p. m. Women's Missionary Societies, first

Thursday—afternoon of each month. Ladies' Aid Society, second Thursday afternoon of each month. Choir rehearsal, Saturday at 1:45 p. m. All are cordially invited to attend these services.

ST. JOSEPH'S CATHOLIC CHURCH.

Rev. Eneas B. Goodwin, Pastor.

During Lent a series of sermons will be delivered on the following subjects: Ash Wednesday—8 p. m. The Meaning of Lent. Sundays, 10 o'clock Mass:—The Worship of God. Sundays, 8 p. m.:—God's Dealings and our Social Conditions. Friday afternoons, 3 p. m.:—Stations of the Cross, Spiritual Duties of Children. Fridays, 8 p. m.:—Stations of the Cross, Sermons on the Seven Last Words from the Cross. Good Friday, 3 p. m.:—Adoration. Good Friday night, 8 p. m.:—The Crucifixion of Jesus Christ.

Sunday—8 a. m. Mass, reading of the Gospel and Epistle of the day, sermon; 10 a. m. High Mass, reading of the Gospel and Epistle of the day, sermon; 3:30 p. m. vespers, benediction, sermon; baptisms, 2:30 p. m.

Week days—Holy Communion, 7 a. m.; Mass, 8 a. m.

Men's Sodality meets on the fifth Sunday of the month; Married Women on the first Sunday; Young Ladies on the second Sunday; Boys and Girls on the third Sunday.

Holy hour adoration every Friday from 3 to 4 p. m.

FIRST EVANGELICAL CHURCH.

Leo Schmitt, pastor. Sunday services: Sunday school at 10 a. m. Sermon at 11 a. m. and 7:30 p. m. Junior Y. P. A. 2:45, and Senior Y. P. A. at 6:45 p. m. Mid-week meetings: Wednesday at 8 p. m. and Thursday at 7:45 p. m. Choir rehearsal at 8:45.

Morning and evening worship with preaching by the pastor.

The public is most cordially invited to all services.

ST. PAUL'S GERMAN EVANGELICAL CHURCH.

G. Pahl, Pastor.

OUR EASTER PROGRAM, 1915.

March 28—9:15, Sunday school, 10:30 a. m., confirmation, English. 2:30 p. m., home department rally. 7:30 p. m., German Lent service.

April 2—7:30 p. m., English, Good Friday. Service with Holy Communion.

April 4—9:15, Sunday school, 10:30 a. m., German Easter. Service with Holy Communion. 7:30 p. m., Easter exercises of the Sunday school.

April 5—8 p. m., Brotherhood meeting.

April 8—2 p. m., Ladies' Aid meeting and coffee in the home of Mrs. C. Stiger, 100 Saratoga St. 8 p. m., Young People's League meeting.

April 11—9:15, Sunday school; 2:30 p. m., reunion of all confirmed.

To all these services and meetings you are herewith kindly invited. A blessed Eastertide to you! Yours for the Ev. St. Paul's church.

MUCH ADLER-I-KA USED IN DOWNERS GROVE

It is reported by Houseman druggist that much Adler-i-ka is sold in Downers Grove. People have found out that ONE SPOONFUL of this simple buckthorn bark and glycerine mixture relieves almost ANY CASE of constipation, sour or gassy stomach. It is so powerful that it is used successfully in appendicitis. ONE MINUTE after you take it the gasses rumble and pass out. It is perfectly safe to use and cannot gripe.

Houseman Drug Co., corner Main and Curtis Sts.

SCHUETZ & KEARNEY CONTRACTORS and BUILDERS Get our figures on Any Carpenter Work Phones 95-J 117-J

FRED FINK LIVERY Carriages for Weddings, Funerals, Etc. 11 Grove St. Phone 63-J

J. H. ROBINSON, M. D. PHYSICIAN & SURGEON Office Farmers & Merchants Bank Bldg. Phone 106-M

Phone 48-R **AUTO FOR HIRE** By Hour or Trip \$1.50 per hour; 25c per trip to and from depot Ford Autos Overhauled \$20.00

The Value of Hot Water

In the Modern Home

Efficient hot water service reduces the household drudgery—the daily cooking and dishwashing—laundry work—the care of children. Hot water is needed and should be available at all times. With a

GAS WATER HEATER

you can have quick, cheap hot water in your home. The first outlay is small; the amount of gas burned is trifling.

Install a Gas Water Heater this spring.

Western United Gas and Electric Company

C. I. CARLSON, District Manager

Bismarck Preserves

Put Up in 20 oz Mason Jars

In the Following

Strawberry
Raspberry
Blackberry
Plum
Peach
Currant
Apple Butter

Twenty-Five Cents Per Jar

F. GERWIG'S NORTH SIDE GROCERY AND MARKET TELEPHONES 2 & 22 32 NORTH FOREST AVENUE, DOWNERS GROVE, ILL.

Mertz & Mochel

Hard and Soft **COAL**

Hardware, Stoves, Etc.

Red Comb Poultry Feed

Washburn "Gold Medal" Flour

36 South Main Street

TELEPHONE 29

Blue Front Store!

Safety First



WHEN you send the children to this store, they will receive the same prompt and courteous attention that would be yours.

A child should know how to market. We help them all we can, and enable them to economize in many small ways that in the aggregate mean larger savings.

This is a safe store first—a money saving store afterwards. Quality is never sacrificed for the sake of making a sale at low price.

Send the little ones if you cannot come.

Week End Bargains

Sweet tender Early June peas, special price per can .10
Large Can delicious baked beans, regular 15c size, per can .10
Banker's Blend Golden Santos Coffee, 3 lb. can 1.00
The best coffee you ever tried

B. E. KEHLER, Proprietor GENERAL DRY GOODS AND GROCERIES Telephones 176 & 176 55 S. Main St.