

CHICKENS FOR FARMS

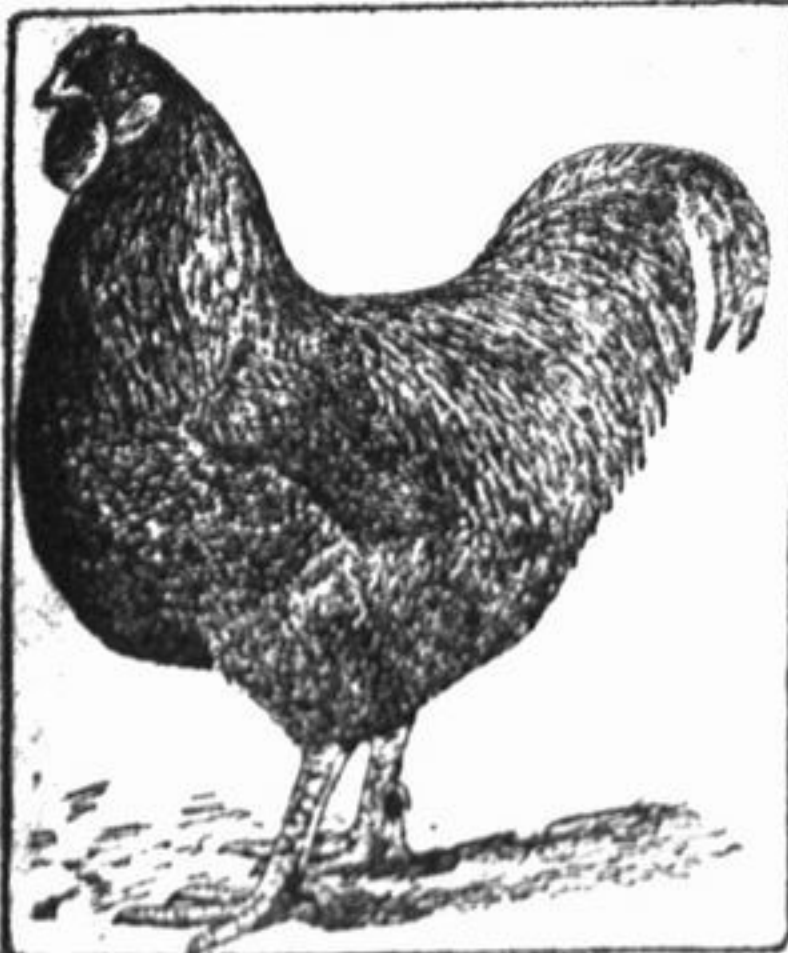
Few Realize Importance of the Poultry Industry.

No Disputing Fact That Pure-Bred Fowls Are Superior In Every Respect to Scrubs—Work Is Generally Left to Women.

(By CHESLA C. SHERLOCK.) The farmer may be well educated along different branches of agriculture—more so than his city cousin—but the city cousin has stolen a march on the farmer when it comes to raising good poultry.

As a rule the farm poultry is left to shift for itself, no thought being given it except to gather the eggs, and later wonder why they don't hatch.

If every farmer in the United States would buy some reliable breeder a good cock every year—say one that would cost about \$10—the advance-



Good Specimen of Buckeye Breed.

ment made in the farm poultry would be worth more than all the scrub stock in existence.

There is no dispute raised to the fact that the pure-bred is superior in every respect to the scrub. The pure-bred will lay more, eat less and cost less in the end than any scrub.

The only sure way to combat the present high cost of living is to produce more and better poultry. What excuse has the farmer for not raising more poultry when eggs are 25 cents the year round, and table fowls never less than 15 cents a pound?

I remember one winter I was invited to visit a prosperous farmer and his wife, and a friend I was anxious to see their poultry for I believe that one of the real joys of a farmer is in having a person in the way that manages their poultry.

The wife became interested and asked me what my coops cost me. I told her that it would take about \$4.50 worth of material, and that if she would get it, I would make her a coop while I was there.

Is it any wonder that the housewife is not improving her poultry as fast as her husband improves stock, when he refuses to allow her to, and yet she has no objection when he wishes to introduce new blood into his herd.

Cause of Leg Weakness. Little chicks that are suffering from "leg weakness" are illustrations in the greater majority of the cases, of the result of feeding a ration that furnished too much growth for the body and not enough for the formation of bone material.

Money Feed is Bad. An all-around beware of feeding money feed of any kind to chicks. For the first few feedings use stale bread moistened with milk.

SOME POULTRY CONCLUSIONS

Expert of Missouri Station Gives Out Few Practical Suggestions on Chicken Raising.

Under the heading of "Lessons Learned," Mr. Quisenberry of the Missouri experiment station has issued the following notes for poultry raisers, based on the year's work in the egg-laying contest at that station:

That there is no variety of breed which far exceeds others in general use as far as egg production is concerned. That some hens have a born tendency to lay, and others have a born tendency to put on fat.

That a little moistened food is relished and will increase egg production.

That many high producers lay thin-shelled eggs, and that the germs are often weak. A few high producers are able to lay large numbers of eggs, fertilize them and put vitality into the chick.

That the Mediterranean class can stand more protein and fattening food than the birds of the American, Asiatic or English classes. There is not so much danger of the Mediterranean becoming too fat, and they require a richer food than the other classes mentioned.

That the purpose of properly feeding and housing a hen is not to feed eggs into her body, but to so feed and care for her that you may get out of her the eggs which breeding has placed there.

That the best producers have broad bodies. The back is broad, and the ribs are widespread, giving plenty of room for egg and digestive organs.

That good layers are big eaters. A bird must have capacity to eat and digest a big amount of food if she is to lay well.

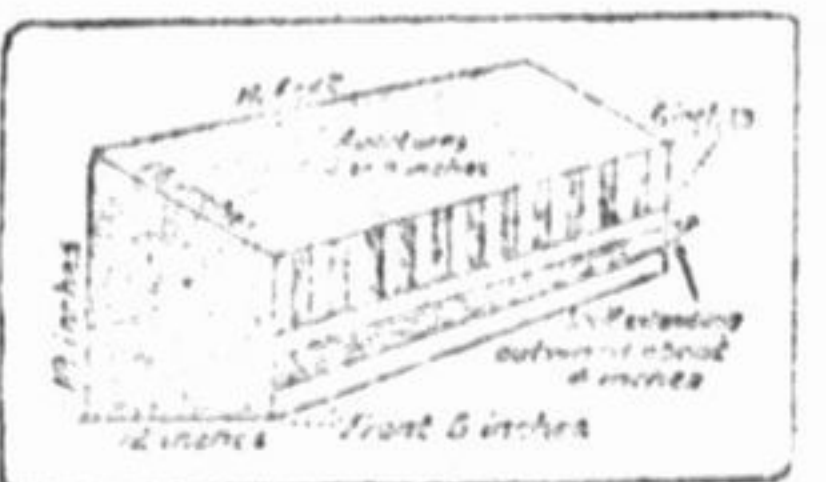
That most of the high producers have good sized combs for their breed.

HANDY POULTRY FEED HOPPER

Device Shown in Illustration Has Advantage of Shelf in Front, Preventing All Waste.

This hopper has the advantage of having a shelf running along the front, by means of which much waste can be prevented. It can easily be made from any available lumber to the size indicated or smaller if required.

Dry mash feeding, or, in fact, any mash feeding, has its drawbacks in the fact that some of the food is wasted by being pulled out on the ground. There are some things which the birds like better than others, and if they are not



Useful Feed Hopper.

very hungry they will endeavor to pick up the things that they like in preference to being fed. The best way to overcome this is to have the feed hopper raised up in the troughs or keep a trough with a top cover, that is, if they will have to pick up the feed from the trough. A good device is that shown in the illustration, and you will find it a very useful one.

MARGIN OF PROFIT AND LOSS

If Record Is Kept of Cost of Production and Sales One May Tell If Flock Is Paying.

A flock of hens should be made to pay a good dividend on the investment. If they do not do this, there is something radically wrong somewhere along the line.

If you have kept a record of the cost of production and sales you will be able to tell whether or not your hens are paying. Flocks that are laying an average of 50 to 60 per cent. are doing well, and will make a good showing in the right side of the cash book. And averages above that will be so much more gain, and will more than justify keeping the birds.

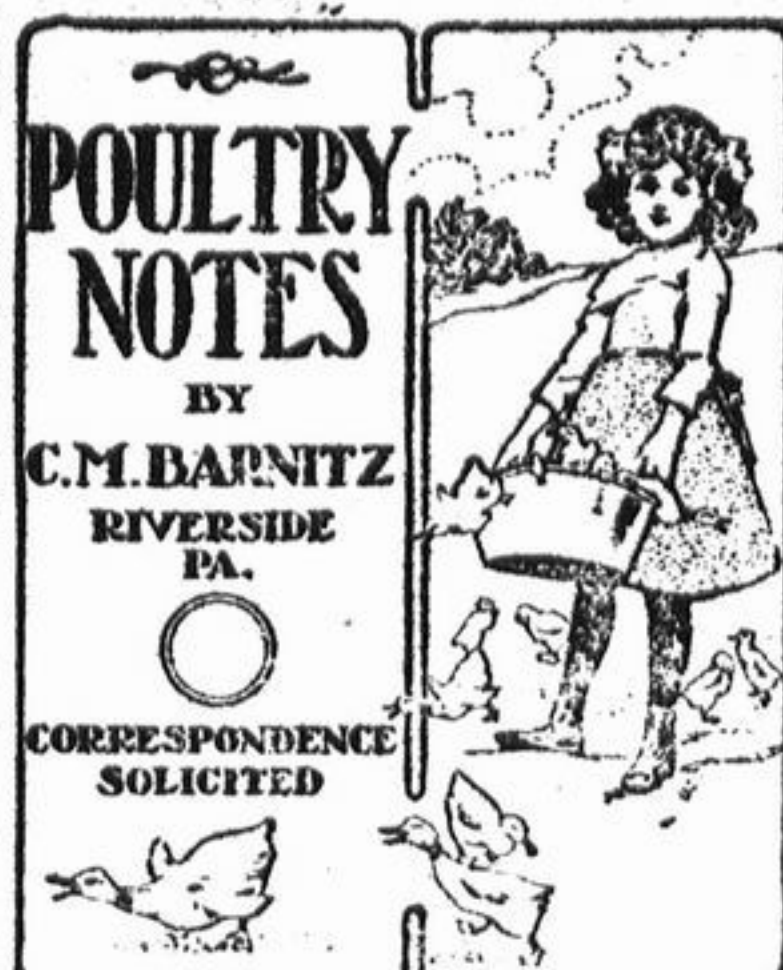
If they fall way below this mark you had better investigate and find out the cause of the trouble. It may be that you have a poor strain of birds; that you are not feeding the right kind of food or in sufficient quantities, or that you are not giving them the proper attention that they must have in order to be great producers.

White Clover for Egg Layer.

White clover hay is the richest in lime. Feeding clover is a preventive of soft-shelled eggs. Cut clover hay has helped revolutionize the poultry business. Red clover hay contains about twenty-eight pounds of lime to the thousand pounds. Scald the clover hay at night, and keep it covered so it can steam. See that the clover is cut to one-half inch length. When longer it is apt to pack in the crop, causing crop-bound.

Modern Poultry Houses.

Poultry houses that are up-to-date are no longer double boarded affairs that are closed up at every point, but are fresh air houses with plenty of ventilation.



[These articles and illustrations must not be repeated without special permission.]

THE BLACK LANGSHAN.

That name, Langshan, at once gives this fine breed away as a member of the Asiatic class, China with its Bantams and Cochins and Shamois and Langshans being the originator of the giant of poultrydom.

The Langshan is a large-headed, single-combed, upright bird, with the back high, that at shoulders, with the medium length, combine sweep to the abundant side hangers, the tail large, even with top of comb and character.



BLACK LANGSHAN COCK

It is for its broad, flowing skirts which sweep down each twenty in his in length. The neck is broad, round, kept close to the body, stout, short and well feathered down outer side, the outer feathers being directed toward the tail.

The head is broad, the eyes are deep rather than light, the beak is English size, broad, with a hook and narrow. It is for its upright carriage, even feet, that the Langshan is a first class bird. The feet are of the phalange type. The feet are of the phalange type. The feet are of the phalange type.

The feet are of the phalange type. The feet are of the phalange type. The feet are of the phalange type.



BLACK LANGSHAN HEN

pinkish red and feet. The Langshan is a large, upright bird, with the back high, that at shoulders, with the medium length, combine sweep to the abundant side hangers, the tail large, even with top of comb and character.

LANGSHAN STANDARD WEIGHTS. Pounds. Pounds. Cock 9 1/2 Hen 7 1/2 Cockerel 8 Pullet 6 1/2

DON'TS.

Don't overcharge a man because you know he has money. Fraud is fraud to the poor or to the rich, and the swindler eventually lands in the ditch.

Don't be a money making machine. If all you think about is money you're missing this life's sweetest honey.

Don't worry, but keep busy. The busy man is the happy man and isn't afraid of sweat and tan.

Don't expect fowls to thrive where unnatural methods are used. Remember filth is against nature and thus against health.

Don't be too enthusiastic and rush things. The jockey who wins the race keeps control of his horse, fosters his strength and uses his reserve for the last sprint. Fixating out at the beginning loses the inning.

I LOVE THEM ALL.

I love the days when fondleys Are heard from field and trees, Are greeted by the robin, When and sprightly chickadee; When the blue bird and the brown thrush Sing sweet carols in the morn And I hear the bobwhite whistling From the wheatfields and the corn.

I love the hours when from the bowers Sweet roses waft their breath, When lilies rise from wintry sleep And tell of conquered death, When the incense from the blossoms Assends like an angel's prayer, And the fragrant zephyrs whisper, "God made this world so fair."

I love the days when golden rays Epen the waving grain, When the reaper's song is borne along From echoing hill and plain, When orchards bend with golden fruit And clusters bend the vine And the land overflows with wheat and corn And honey, milk and wine.

I love the time when leaf and vine Are turned to brilliant red, When autumn's fiery paints the wood And southern birds have fled, When the air is sharp with biting frost And the trees are bare and gold And woe is borne by floating sails To the broken water's end.

I love the time of a world in white, Covered with a blanket of snow, The snowflakes dancing in the air, And the frost on the window pane, When the children's games and sleighbells And the snow on the roof are seen, And the snow on the roof are seen, And the snow on the roof are seen.

W. B. BARNITZ

KURIOS FROM KORRESPONDENTS

I have the "Santal" calls for a five point comb cock. I have ten birds that have from seven to nine points, while the rest are four and five hens. Have you any three to five. Is it possible by cutting to get a five point comb cock from a five point hen?

My 1000 Island and Red chicks are a disappointment to me. Their parents are the standard color, but the young ones have some black in wings, back and feet. What is the cause? A. This is not unusual for Is. and your chicks will lay the night when their adult feathers appear.

I have a large flock of meat is the cause of the fighting each other's toes. A. While chicks hungry for meat are apt to get the scales on their feet, especially when for any cause the food starts, we note that chicks on a good grass range seldom injure in this manner. There they get exercise, and are not being crowded together to bother about each other's affairs.

How does the egg travel down the oviduct, round or pointed end toward the contact and nearer which end of it, does the cell kernel its origin? A. Egg travels pointed toward end. Nearer large end.

FEATHERS AND EGG SHELLS.

Experiments have been made to find out why some feathers are so much better than others. It is found that the quality of the feathers is determined by the quality of the food. A diet rich in protein and calcium will produce better feathers.

The quality of the egg shells is also determined by the quality of the food. A diet rich in calcium and phosphorus will produce stronger egg shells.

The quality of the egg shells is also determined by the quality of the food. A diet rich in calcium and phosphorus will produce stronger egg shells.

The quality of the egg shells is also determined by the quality of the food. A diet rich in calcium and phosphorus will produce stronger egg shells.

The quality of the egg shells is also determined by the quality of the food. A diet rich in calcium and phosphorus will produce stronger egg shells.

The quality of the egg shells is also determined by the quality of the food. A diet rich in calcium and phosphorus will produce stronger egg shells.

The quality of the egg shells is also determined by the quality of the food. A diet rich in calcium and phosphorus will produce stronger egg shells.

The quality of the egg shells is also determined by the quality of the food. A diet rich in calcium and phosphorus will produce stronger egg shells.

W. B. BARNITZ

Accommodation means much in the selection of a bank. THIS bank extends every possible courtesy, in line with good sound Banking You are invited to use this service. FIRST NATIONAL BANK OF DOWNERS GROVE Hours From 8 A. M. to 3 P. M. Saturday evenings from 6 to 8 o'clock.

Mertz & Mochel HARDWARE HARD and SOFT COAL GRAIN and HAY RED COMB POULTRY FEED Also Washburne-Crosby Co's. GOLD MEDAL FLOUR 36 South Main Street TELEPHONE 29

SCHOOL BOOKS School books sold for cash only, on account of the small per cent. of profit. School Supplies of All Kinds Tablets, Pencils, Pens, ect. Mrs. E. Gress 103 So. Main Street Telephone 36-J THE SCHOOL SUPPLY STORE

SHOES! SHOES!! That combine unusual style with exceptional comfort. Repairing of all kinds quickly and neatly done. B. S. ELFO, 103 So. Main St.

The Blue Front Store IF you knew what pleasure and care we exercise in the selection of our goods, you would be sure to buy from us. So many departments in our store, so many regular patrons, would be surprised. You would find them. Suggestive of the Orient in flavor and fragrance. Like our Corn, Cream and Chocolate, their cost is no more than for the ordinary kind. Test by Taste—Do it Today. SPECIALS Fancy Michigan Bartlett Pears, for canning, per bussel, \$1.50, or per peck 40c Good Canning Tomatoes, per bushel 65c B. E. KEHLER GENERAL DRY GOODS AND GROCERIES Telephone 175 55 South Main Street