

THE REPORTER.

By WHITE & WILLIAMS. D. G. GRAHAM, Associate Editor. \$1.50 PER YEAR STRICTLY CASH IN ADVANCE.

REPUBLICAN TICKET. For President—WM. MCKINLEY. For Vice-President—GARRET A. HOBAERT. For Governor—JOHN R. TANNER. For Lieutenant Governor—W. A. NORTHCOOT.

MAJOR MCKINLEY'S LETTER.

William McKinley's letter of acceptance is one of the ablest documents written for many years. It sounds the key-note of this most important campaign, and in eloquent, logical and convincing language, tells the voters just what the Republican position is and just what the Republican party intends to do if placed in power.

T. McCleary, of Minnesota, in a speech delivered in the House of Representatives February 13, 1896. It is almost unbelievable that an act of Congress, which was discussed off and on for nearly three years, the debate in the Senate occupying 60 pages of the 'Congressional Record' and in the House 78 pages, could for a moment be thought to have been passed surreptitiously.

Gov. Altgeld's reply to Mr. Forman's celebrated letter, in which the governor was accused of some very reprehensible practices in connection with the office he holds, is simply an evasion of the real question.

Once more the merchants of the State of Illinois will attempt to clip the wings of the department store managers by making use of the taxing powers of the State government, says the Merchant's Review.

He condemns as "in the highest degree reprehensible" all efforts to array "class against class, the classes against the masses, section against section, labor against capital, the poor against the rich, or interest against interest."

The underlying principle of this legislation, he declares, should be strictly observed. This, he explains, is to "afford new markets for our surplus agricultural and manufactured products without loss to the American laborer of a single day's work that he might otherwise procure."

Biliousness

Is caused by torpid liver, which prevents digestion and permits food to ferment and putrify in the stomach. Then follow dizziness, headache, insomnia, nervousness, and, if not relieved, bilious fever or blood poisoning.

Hood's Pills

Its immediate repeal by giving an overwhelming vote for President McKinley. The future tariff policy of the United States is in the hands of the people.

"The situation is fraught with danger and anxiety," said the President of the Savings Bank Association at its last annual meeting. Again depositors in Savings Banks are confronted with serious dangers.

Here are some prices on canned goods at Bateman & Palmer's: Choice marrowfat peas, 3 cans for 25c; corn, 4 cans for 25c; tomatoes, 3 cans for 25c.

St. Joe and Benton Harbor ROUTE.

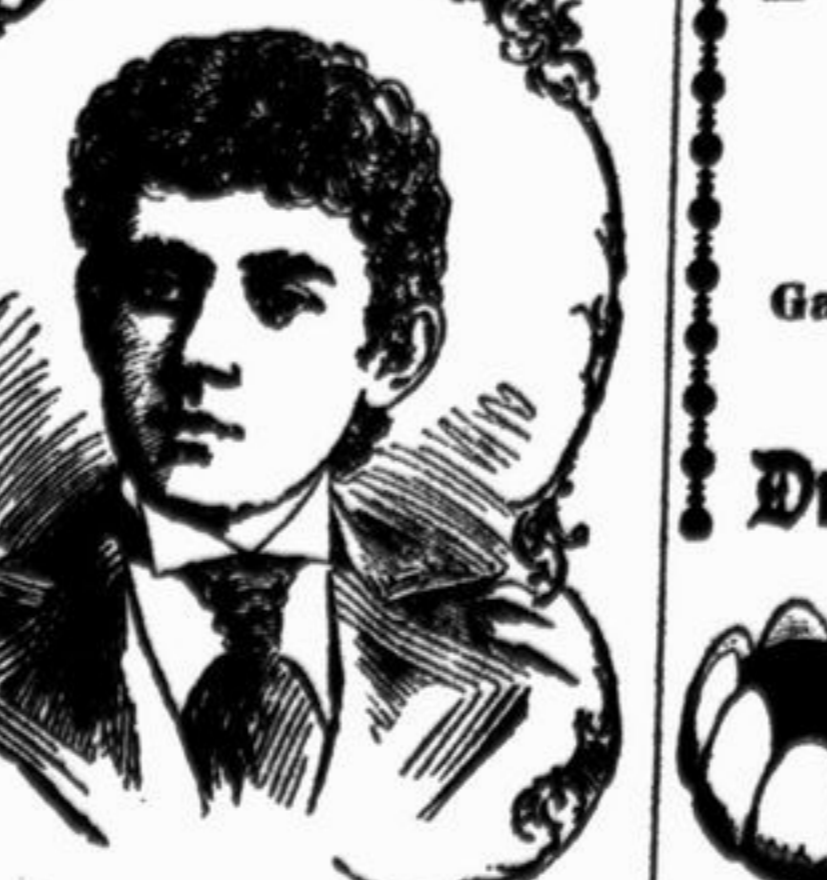


GRAHAM & MORTON TRANS. CO. operating the superb side wheel steamers CITY OF CHICAGO and CITY OF MILWAUKEE and the newly built propeller CITY OF LOUISVILLE.

Headache Destroys Health

Resulting in poor memory, irritability, nervousness and intellectual exhaustion. It induces other forms of disease, such as epilepsy, heart disease, apoplexy, insanity, etc.

Dr. Miles' Nervine Cures.



Mrs. Chas. A. Myers, 201 Hanna St., Fort Wayne, Ind., writes Oct. 7, 1904: "I suffered terribly with severe headaches, dizziness, backache and nervousness, gradually growing worse until my life was despaired of, and try what you would, I found no relief until I commenced using Dr. Miles' Nervine."

The North Side Grocery. Flour no better on earth, per bbl, \$4.00. Best Creamery Butter per lb. .18. Eggs warranted strictly fresh doz. .12. Full Cream Cheese none better per lb.15.

O. J. DAILY CONTRACTOR AND BUILDER. Contracts taken for all kinds of Carpentering and Building. SATISFACTION GUARANTEED. DOWNERS GROVE, ILL.

L. KLEIN, FRESH AND SALT MEATS. Fruits and Vegetables. Spring Chickens, 12 1/2c per lb. Picnic Hams, 7c per lb. Whole Bacon, 10c per lb.

WHEN YOU WANT... GROCERIES That Are Fresh and Nice Call on... W. H. BARNHART. He will give you as much for a Dollar as can possibly be sold at a living profit.

John Haas Meat Market. Always keeps on hand Fresh and Salt Poultry, Game, Meats, Smoked Meats. Orders promptly delivered. Everything guaranteed first-class.

High Class and Painless Dentistry. Teeth extracted Absolutely Without Pain. Gas Administered When Desired. Dr. A. W. Morrow. HINSDALE, ILL. Gold Crown and Bridge Work A Specialty.

Bring Your Collars, Cuffs, Shirts, Underwear and other Wearing Apparel To the... Downers Grove Laundry. We will return them clean and nicely laundered. JOHNSON & LARSON, Proprietors. Laundry Called For and Delivered.

DOWNERS GROVE DIRECTORY CHURCHES. Methodist Episcopal—Rev. A. E. SAUNDERS, Pastor. Services Sunday at 10:45 a. m. and 7:00 p. m. Sunday School at 9:30 a. m. W. J. Herring, supt. Prayer meeting Wednesday evening at 7:00. Epworth League Sunday evening at 6:00.

PROTESTANT EPISCOPAL CHURCH ST. ANDREW'S MISSION. Rector, Rev. John C. Sage; Supt. of Sunday School, H. B. Gibbons. Services every Sunday afternoon. Evening prayer at 8:30; Sunday School at 11:45. On the second Sunday of each month services at 8:15 a. m., with celebration of the Holy Eucharist. You are cordially invited to attend.

Maple Grove Lodge, No. 525, K. of P. Meets first and third Wednesdays of each month. Visiting Knights cordially invited. G. H. BERGER, C. C. W. F. CANADAK, of R. and S.

BOARD OF EDUCATION. Dist. No. 2, Twp. 28, Range 11. President—F. D. Lindley. Secretary and Member—W. R. Townday. Members—C. B. Blodgett, Wm. M. Carpenter, E. H. Norriss, J. W. Worley, E. Wootton.

ATTORNEYS AT LAW. OFFICES, EXCHANGE OFFICE, Downers Grove. AND SUITE 28, 81 CLARK ST, CHICAGO. JAS. HECKMAN. CHAS. C. CARNAHAN. Heckman & Carnahan, ATTORNEYS AT LAW. Room 56—125 LaSalle St., Chicago, Ill. CHAS. C. CARNAHAN—His residence, Fairmount Ave., near Maple Ave., DOWNERS GROVE, ILL. DR. G. A. SIDDONS HOMEOPATHIC PHYSICIAN -- and -- SURGEON, Office and Residence, Miller Building, R. R. Street, Downers Grove, Ill.