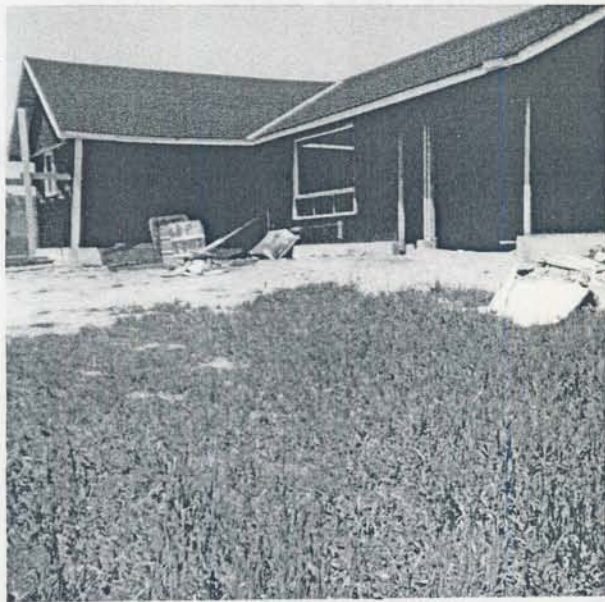




Fall 1971



Summer 1970

Lot 26 box. 3, Hamilton Twp.
Black's Road.

The home of Bert and Ruby Lightle

THE HOME OF BERT AND RUBY LIGHTLE

Location

On part of lot 26, Concession 3, in Hamilton Township, Northumberland County, the road it is located on is called Black's Road, which is one quarter mile north of Dale Road, and it is the second house on this road.

This is the first house on the property, receiving our permit to build on April 27th, 1970 from the building inspector, W.A. McKinley, the cost of the permit was fifteen dollars.

Size of Lot

Approximate size 220ft frontage on Black's Road by 150ft deep. We started to build in May 1970 and were finished in October 1970. Later in August 1975, Keith Lashley did a survey of the lot, as it had to be separated from the farm, the area being 0.716 acres. It was registered August 7th, 1975.

Size of House

A one ^{1 1/2} story house with an attached garage, overall size being 1677sq feet.

Designers

Margaret and Blaine Lightle

Builder

Horace Davey
R.R. #6 Cobourg, Ontario

Basement

Excavated May 12, 1970.

Footings

Size: 6" by 18" by 10" thick

Basement Floor

Poured cement 4" thick and the height of basement 7'6" and the proportions of concrete mix 2500.

Walls

10" cement wall from Port Hope Ready Mix.

Tiled

It's tiled under the basement floor and the water goes into the field tile on Blaine Lightle's farm.

Main Floor

Joists 2" by 8" by 12' long, spacing being 16" with all joists being bridged.

Sub-floor is pine with 4" by 8" plywood floor on top.

Second Floor

Second floor: 2" by 6" and spacing 16"

Wall Studding

Wall studding: 2" by 4" and spacing 16"

Roof

Roof Rafters

Roof rafters: 2" by 6" and spacing 16"

Shingles

Shingles are interlocking black asphalt.

Insulation

Walls and ceiling are insulated with bats, plastered walls and ceiling, except one wall in the kitchen which is of walnut panelling.

Heating System

Heating system is oil (forced air).

Number of Rooms

Kitchen, dining room, living room, three bedrooms with closets in each room and two closets in hall, one bathroom (four pieces) and family room in basement.

Fixtures in Bathroom

Gold fixtures in bathroom with gold tile around tub and shower.

Kitchen Cupboards

Three quarters in stbirch with pine shelving double steel sink.

Kitchen and Bathroom Floors

Kitchen and bathroom are polynesian cushion floor in gold in kitchen and off-white in bathroom.

Living Room *of Dining Room*

Painted walls and off-white carpet.

Bedrooms

One in blue painted walls with blue carpet, one in brown carpet with gold painted walls, and one in green carpet with pale pink painted walls; the paint is Latex (water base). The woodwork in this house is mahogany.

Hydro

Voltage 220, with underground cable.

Telephone

Bell telephone and underground cable.

Water Supply

Bored well, 29ft, with removable cement top.

Fireplace

A fireplace was put in the family room in the basement in 1979.

Steel Shed

In 1978 a red steel shed was erected (30 by 50) on the property, one large roller door and one pedestrian door. We used one end for cattle and one end for our machinery, grain and hay.

RECEIVED MAY 2 2002