

COBOURG ARCHITECTURE **TIMELINE**

1910-1919



COTTAGE HOSPITAL

By the time it was closed in 2003, the various additions to the hospital made its “cottage” origins barely discernible. Chapel St. at D’Arcy St. 1914

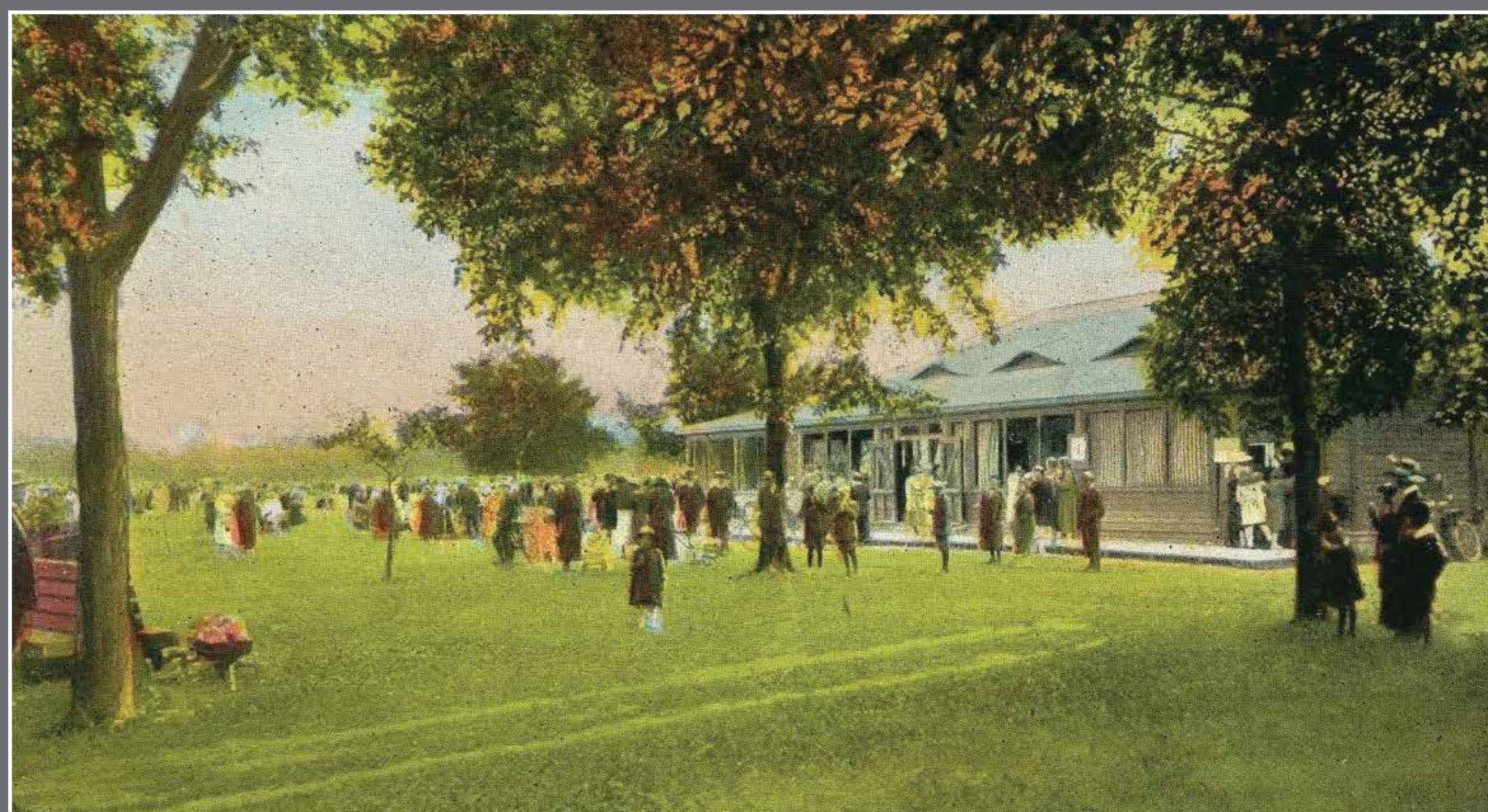


1914

Cobourg citizens respond to the call to arms.

JOHN E. QUINN HOUSE

Mr. Quinn was a manager at both the St Lawrence Hotel and the second version of the Albion Hotel. His family home is built in the four-square style with Arts and Crafts style features. Four-Square homes were typically two or two and a half stories high with a boxy look, a hip roof and a four room floor plan. 154 King St. East. 1915



THE PAVILION

Commonly known as “the Pav”, the Pavilion was near the park’s bandshell, a long, low clapboard building with a hipped roof and rows of removable windows. Many big-name bands played here over the years and many locals remember it fondly! It was demolished in the mid 1970s. Victoria Park 1919