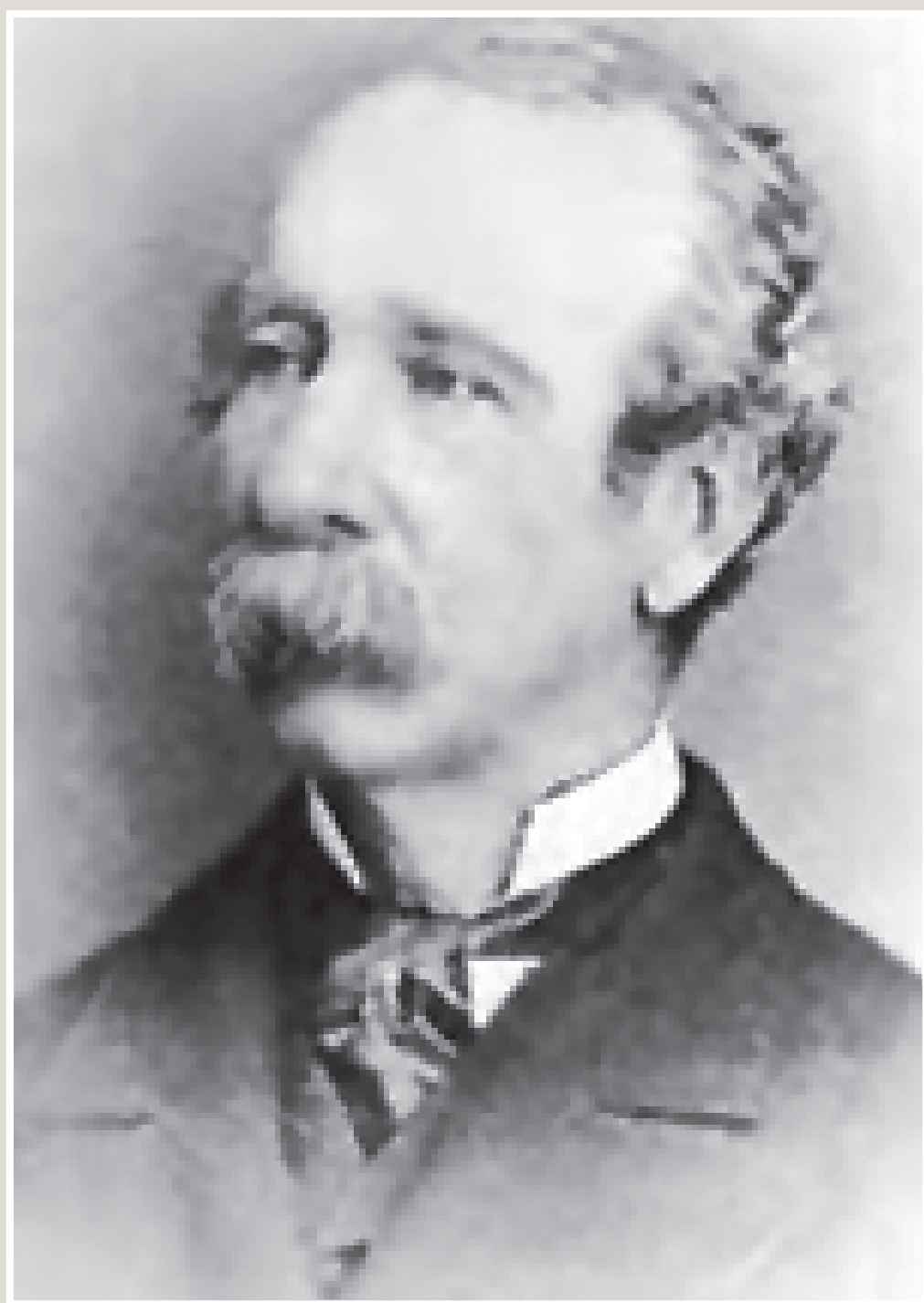


PROMINENT FAMILIES OF THE PERIOD

D'ARCY EDWARD BOULTON 1814-1902



D'arcy Boulton

WHO HE WAS:

The Boulton name and influence continued in Cobourg in the person of George's nephew, D'Arcy Edward Boulton (1814-1902). D'Arcy Edward's father (same name) was the builder of Toronto's "Grange", and his mother was a close relative of Sir John Beverly Robinson, prominent politician and member of the Family Compact.

When still a young boy, D'Arcy Edward had travelled with his uncle, Peter Robinson, checking out the territory to the north of Rice Lake for future settlement. It was later named Peterborough. In 1837 Boulton joined his uncle in business, and in 1847 he partnered with James Cockburn, who became Cobourg's Father of Confederation. The next year he married Emily Heath (1817 -1903) and soon after built an **elegant Regency style villa, known at "The Lawn"**, directly west of his uncle's "Northumberland Hall".

WHAT HE DID HERE:

Like his uncle, Boulton was very active in town affairs. He served as a member of the Board of Police and the Town Council, being mayor from 1854-1857. He was heavily involved in projects to develop the area and expand transportation networks. These included **the harbour expansion, the construction of plank and gravel roads and the Cobourg and Peterborough Railway**. In the latter he skirted scandal by also being associated with Port Hope's rival line and connected to Cobourg businessmen who controlled (and it was believed sabotaged) the Cobourg line while investing in the Port Hope Railway.

Boulton was instrumental in bringing a number of close relatives to Cobourg. These included Captain Patrick Wallace, his son John Sinclair Wallace and the Mackechnies, who were instrumental in the early industrial development of Cobourg.



The Boulton Villa known as "The Lawn"