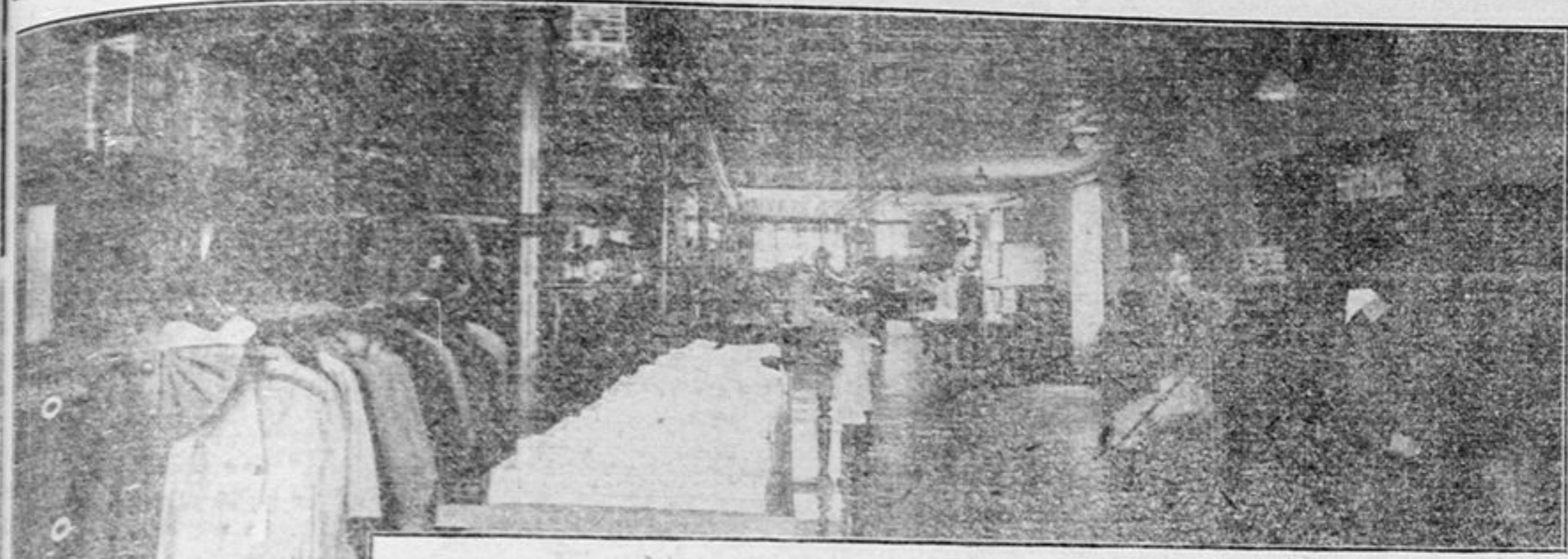


# Exceptionally Good Exhibition Values at Sutcliffe's Big Departmental Store Lindsay

Interesting indeed are the values that we have gathered here for this season's business. In placing orders we always had our customers' requirements before us and by special effort have secured a range of merchandise that will please you and save you money.

During the past months our firm have been right in the foreign markets as well as the home markets, and placed many large orders that quantity meant a saving in prices. With our immense output we aim at close prices and your continued patronage. Be sure and visit this big store when in Lindsay.



Ladies' Ready-to-wear Garments and Millinery Section—Second Floor.

**Your Parcels Checked Free**  
and free delivery of all your purchases to all trains, hotels, or anywhere in town  
**Meet Your Friends Here**



Ladies' Furnishings, Underwear and Hosiery Section—Main Floor.

## A Magnificent Range of Ladies' Coats and Suits



The most attractive showing of Ladies' Suits and Coats that we ever offered are here now. They are very attractive and among them you will find one that suits you in every detail. During Exhibition week all the new lines will be on display and we invite your inspection. Prices range from \$35.00 down to **\$10.00** only.

Ladies' Suit of New Serge in black and navy blue. Smart Coat in new length and trimmed with collar of heavy silk **\$15.00**

Misses' Suit in new two toned boucle. Coat is smart new length with collar of pretty silk, very stylish Skirt, colors blue, brown and grey **\$20.00**

Do not forget our Millinery Opening. It is on all during Exhibition Week. Be sure and attend. The new styles are very interesting.

## These Misses' Suits and Coats Are Extra Value

They are in a large and attractive range that is sure to suit all personal ideas as the style, fit and workmanship. The prices are equally pleasing.

Misses' Coat Special **\$6.95**

This is a very smart Coat in the new diagonal boucle cloth, colors of brown navy and red, sizes 14 to 20. Very special at **\$6.95**

A Girl's Coat for **\$3.95**

This Coat is made of heavy-weight cheviot, half lined with flannel, colors navy, brown and red, neatly trimmed. Sizes to fit 6 to 14 years. Very special at each **\$3.95**

Other lines at from \$5.00 to \$10.00

Ladies' Coat of two toned heavy diagonal tweed, collar that can be fastened close to the neck and cuffs of fancy pressed plush fastened with large silk frog and fancy buttons, special **\$15.00**



## Tameline Silk Special

20 inch Tameline Silk in black and white—some more white than black—others the opposite. Special price during Exhibition per yd. **39c**

## Special Value In New Serges

An extra heavy pure Botany yarn serge in black and navy, splendid worsted finish which give it extra wearing qualities. On sale during Exhibition at per yd. **60c**

## See These Silks

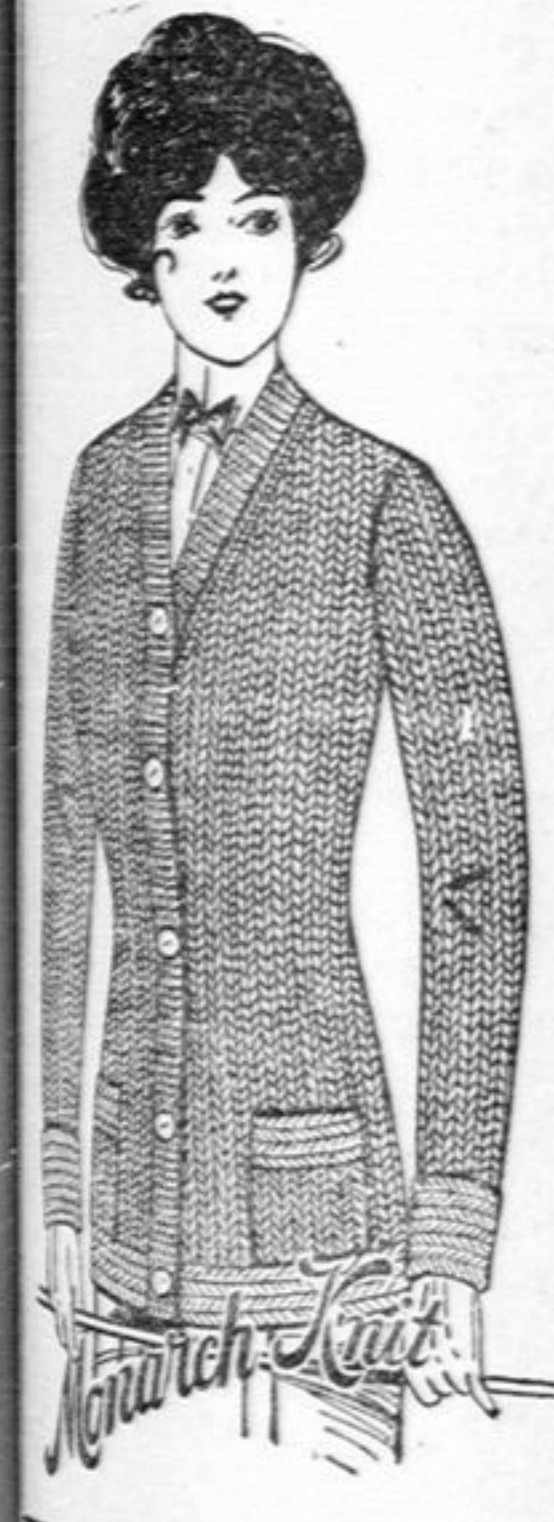
Bulgarian Silks for evening wear, small floral designs, cream ground, 24 inches wide... **75c**

**Vivella Flannels**  
This is a flannel that will prove very satisfactory, besides being a popular material for Blouses, Suits, Coats for cool evenings, Men's Shirts and Pyjamas. It is 30 inches wide and comes in all the most popular colorings. Per yard **60c**

**A Glove Special**  
These gloves are in assorted tan shades and come fastener, sizes 5 1/2 to 7. Extra quality **75c** per pair

**Sale of Ladies' Hand Bags**  
These are a special purchase of neat Suede bags, colors, black, tan, grey, green, navy, etc. now on sale at **29c**

## Ladies' and Children's Sweater Coats



The New Sweater Jackets are very attractive in colors and combination of colorings. The qualities are extra good this year and the prices we are offering them at will induce you to buy a new Sweater Coat and be comfortable during the cooler weather. During Exhibition week these lines will receive a special showing. Be sure and see it.

**Exhibition Special Coat \$2.75**

This is an all wool heavy weave Coat in good fitting style and high collar, many different colors and color combinations, our special price **\$2.75**

## Special Exhibition Week Display New Fall Suitings and Coatings

The newest and most attractive range of materials you will find are here. Attractive in value and newness of weave and coloring. You will find it easy selecting from this immense range and we invite you to see them.

### New Fall Velvets Now On Sale

New two tone velvets which are very fashionable, are included.

Our 27 inch one in tans and blue shades is very prominent and decidedly new. The price is only, per yard **75c**

Corduroy Velvets in a big range of popular colors and full 27 inches wide, extra quality and special **50c** at per yard

Brocaded Velvets in leading colors are shown here in 24 inch widths and are extra quality at **\$1.00** per yard, only

### Kimono Blankets

In sizes 66 x 78 and 72 x 90. The later size comes in a bordered design and complete with girle and neck cord. The prices are \$3.75 and **\$2.75**

## Buy Underwear At This Store

Our stock of Ladies' Misses' and Children's Underwear for fall and winter wear is now complete. We can offer you exceptionally good values and you will do well to get your supply here.

**\$1.00 Garments for 79c**

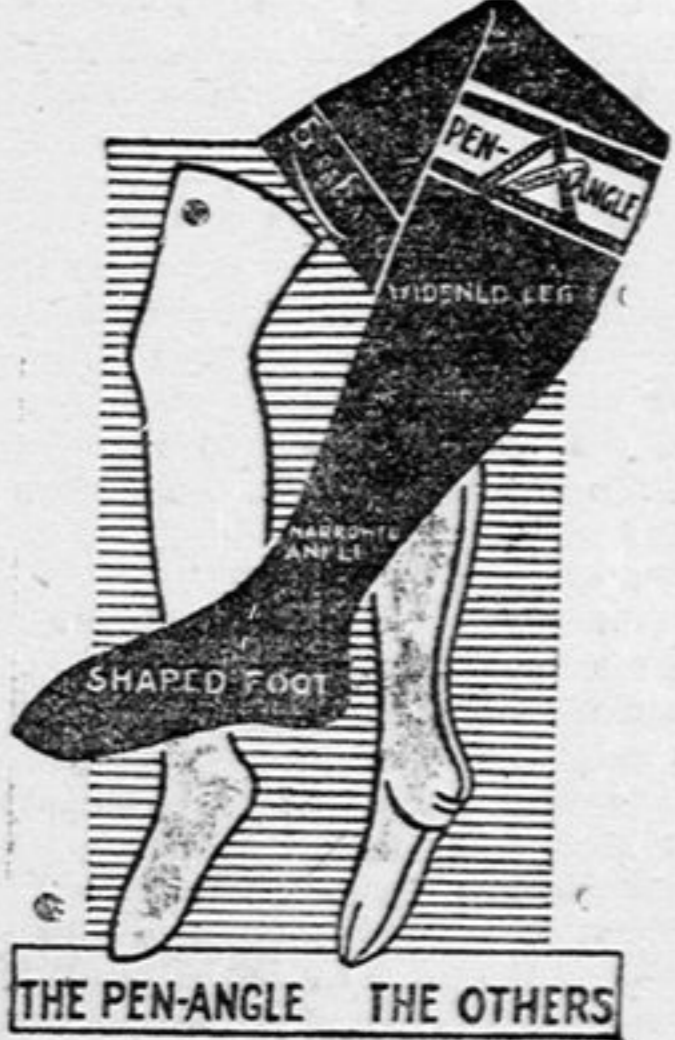
These are the famous Ellis brand spring needle ribbed underwear. Being heavy weight and unshrinkable they are particularly good for the colder weather. We cleared these at a special price from the factory and are therefore able to save you money. Regular \$1.00 value for **79c**

**Heavy Ribbed Hose 25c**

Heavy woolen hose of extra quality, to sell as a leader at this price, only 50 dozen so come soon **25c** Per pair

**50c Cashmere Hose 39c**

This is the Penman Comfort Hose with heels and toes extra spliced with linen, reg. 50c value, but on sale at per pair **39c**



## Exhibition Sale of New Comforters

Our stock was bought direct from the Manufacturers and we are able to show you exceptionally good values in bed comforters. You will be pleased with them and particularly as the prices are low, ranging from \$10.00 down to \$2.00, \$1.39 and **\$1.00**

**Special Values in Wool Blankets**  
For Blankets you should come to this Store for we offer the very best values obtainable. Special lines will be shown during the Exhibition week at the following prices, from \$6.00 down, \$4.50, \$3.75 and **\$2.85**

## Millinery Opening--Tuesday, September 16th, Continuing During Exhibition.

Special showing of the very newest approved styles in Millinery for fall and winter during Exhibition, to which we invite you.

# J. SUTCLIFFE & SONS

Women's Institute Rest Room 2nd Floor **LINDSAY** Two Entrances—Kent and William Streets

## Flannelette Very Special

This is a good weight, full 34 inch flannelette in light and dark colorings combining various patterns. Very special per yard **10c**

## 100 Pieces of New Wrapperettes

In the best qualities procurable and the nicest range of patterns and colorings we have ever shown, now on sale at per yard 15c, 12 1/2c and **10c**