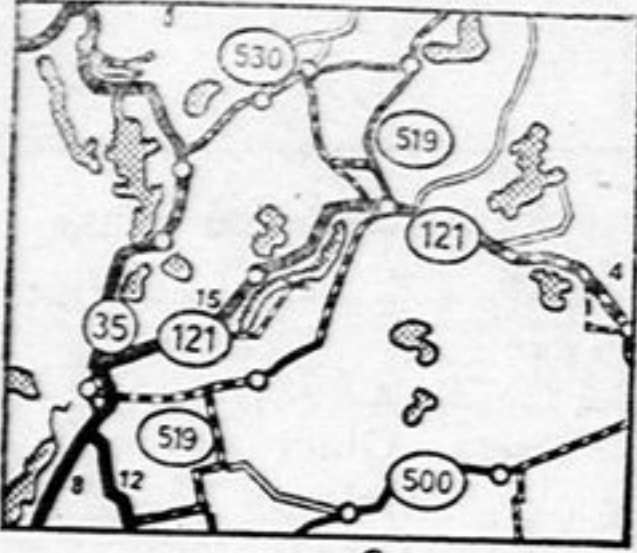


**How well do you know ONTARIO?**

Check your knowledge by identifying this map



However well you know Ontario, you'll enjoy getting to know it better. Make a point this year of exploring its highways and byways, visiting its lovely lakes and vacationing at one of its modern resort areas... like the Haliburton Highlands shown above. Take the first step now, by filling out and mailing the coupon below.

**KNOW ONTARIO BETTER**

ONTARIO TRAVEL, 852 PARLIAMENT BLDGS., TORONTO, ONTARIO  
 Send FREE Literature and Road Map.  
 Name \_\_\_\_\_  
 Address \_\_\_\_\_  
 Post Office \_\_\_\_\_  
 Ontario Department of Travel & Publicity  
 Hon. Bryan L. Colclough, Minister

**Give Her a SPENCER SUPPORT**  
 There's Happiness in Health!

**PREVENT SCOURS**  
 SAVE THAT CALF with **"CALVITA" CALF SAVERS**  
 DON'T DELAY — ORDER TODAY

CUT COARSE FOR THE PIPE  
**OLD CHUM**  
 CUT FINE FOR CIGARETTES

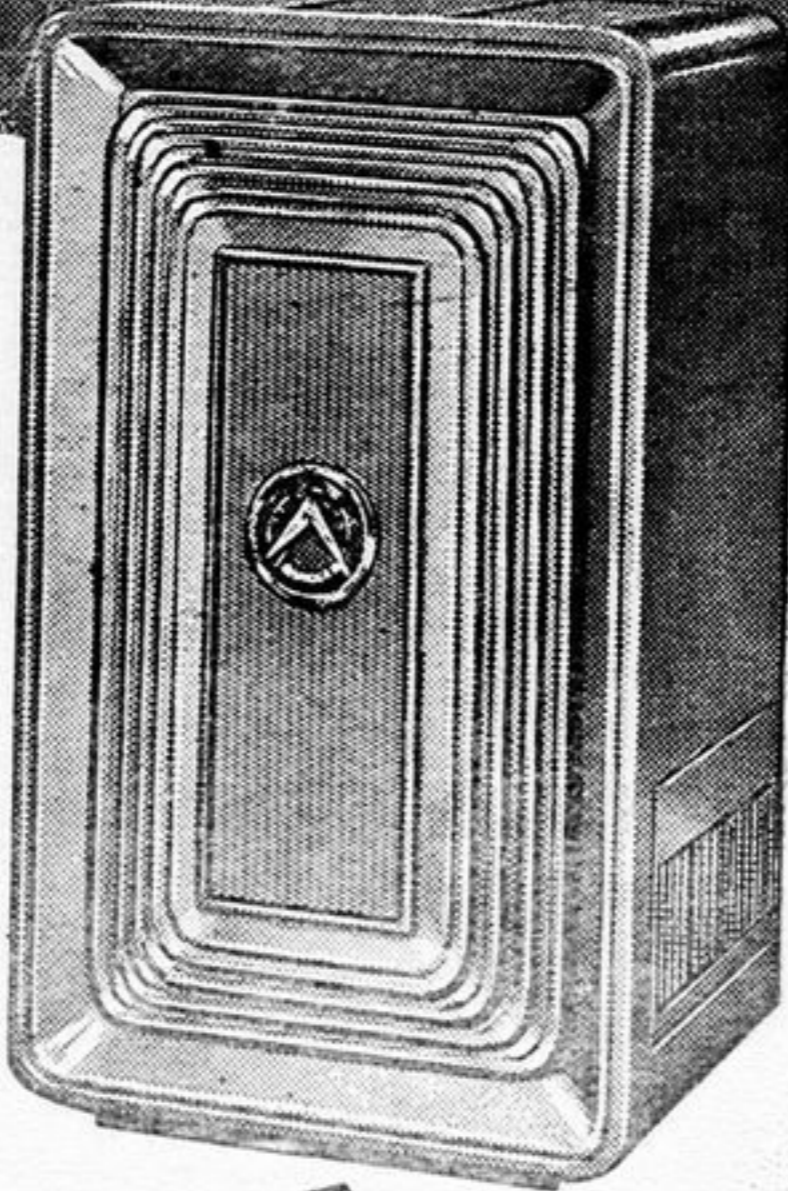
Today's Ideas  
 Make Tomorrow's Progress

**BIG SUMMERTIME DISCOUNT NOW!**  
 AMERICA'S FINEST HARD COAL

**blue coal**

SAVE DOLLARS BY THE TON!

**NOW, ENJOY Assumed Comfort**



- ★ Be warmer in every room.
- ★ Save 1/3 on fuel costs.
- ★ Automatic forced air heating.

**New Improved Quaker Assumed Comfort**

**SUPER CHALLENGER OIL HEATER**

Here is advanced design offering you real heating economy combined with moderate cost.

**TRADE-IN SALE**

**\$50 FOR YOUR OLD HEATER**

on the early purchase of this Quaker Heater equipped with automatic forced air fan and automatic air feed.

**Automatic FORCED AIR FAN**

- Makes your new Quaker an automatic forced air heating system.
- Turns itself on and off automatically.
- Circulates ONE-THIRD more warmer air than ordinary heater blower or fan.



Automatic "AIR-FEED" Turns Smoke Into Heat!

Automatically supplies correct amount of air to burner. Eliminates draft problems.

**2-WAY MONEY-BACK GUARANTEE**

1. Guaranteed to give you more comfort in every room of your home on less fuel than any ordinary heater or YOUR MONEY BACK.
2. Guaranteed to heat your home on 25% to 33% less fuel than any ordinary heater or YOUR MONEY BACK.

Exclusive Radiant "Heat-Flu" Front — besides forced air circulating warmth you get a smooth flow of radiant heat warmth throughout the room.

Quaker Long-Life "Smokeless" Burner — gives extra heat from every drop of oil. Doesn't smoke at any stage of fire.

All-Steel Construction — gives 5-1/3 times faster warm-up than old-fashioned slow heating cast iron. Plus Handy Front Lighting Door • Approved for safety by Underwriters Laboratories • Waist high finger-tip control • Ever-Clear flame door • Automatic Safety oil valve • Automatic draft regulator.

SOLD BY

**Gibson Auto Body, Millbrook, Ont.**

**Coaches For Charter Stock Bros. Bus Lines**

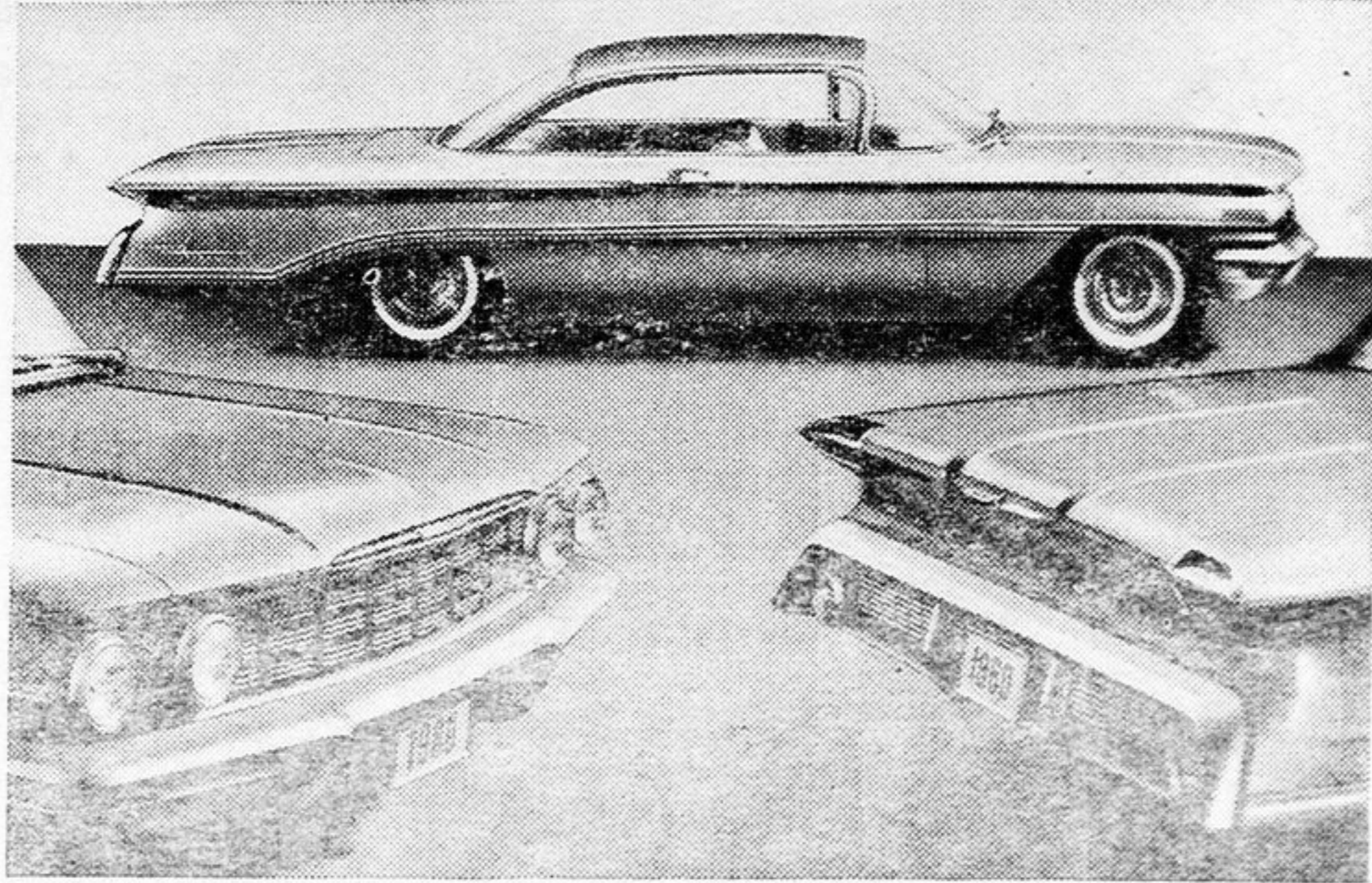
It is a pleasure for us to look after your Chartered Trips

FOR INFORMATION CALL

J. G. Stock, Peterborough, R1 2 0965  
 G. A. (Jerry) Stock, Baileboro, (collect) 10r1 or 9r5

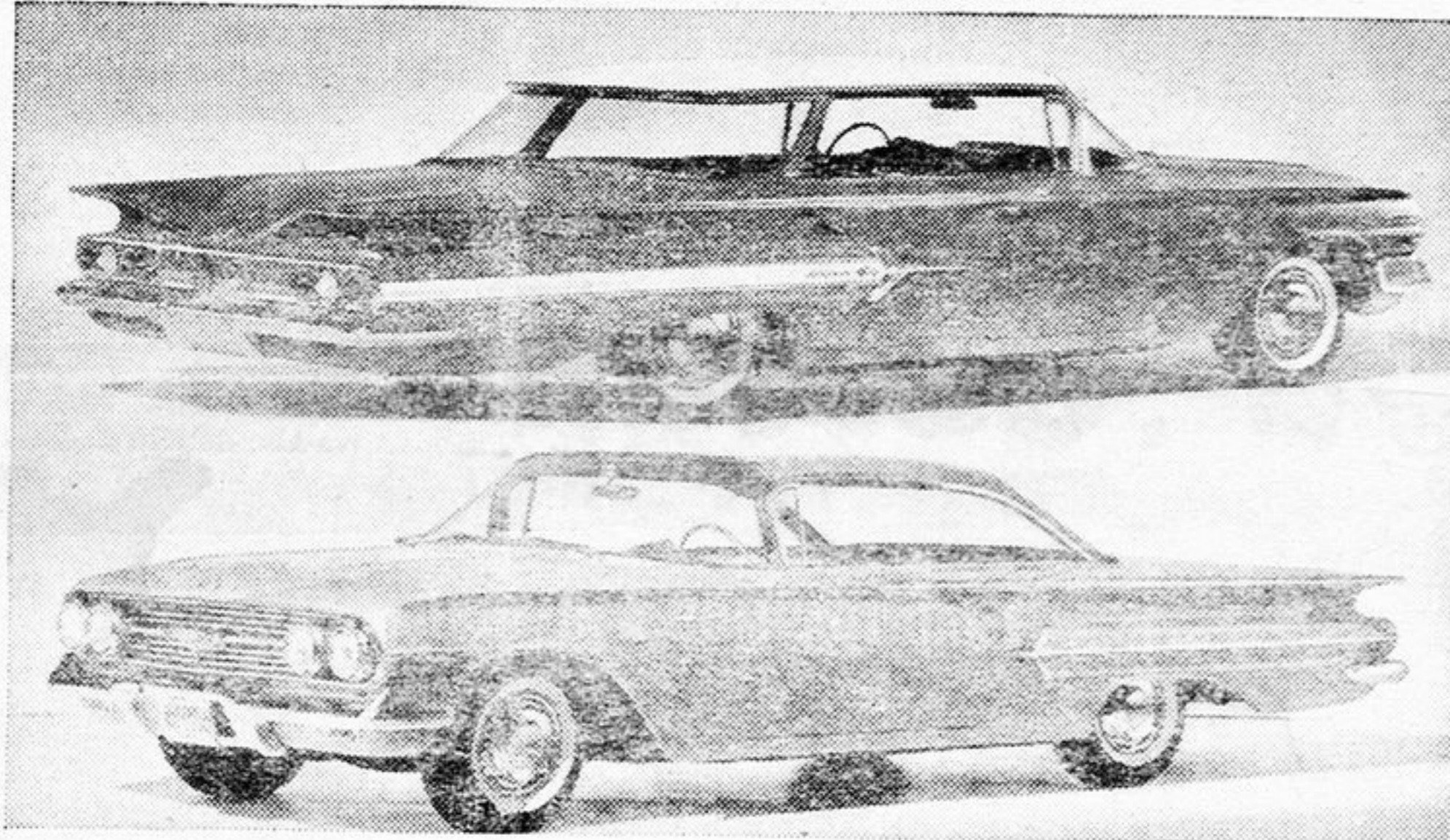
**HERE TOMORROW!**

1960 OLDSMOBILE



Styling changes, featuring a "balanced" design are illustrated in these three views of Oldsmobile for 1960 by General Motors. Left, is the front end view of a 1960 Oldsmobile Dynamic "88" showing grille bars designed to give the front a wider appearance. Rear end styling is shown at right on the "98" Holiday Sports Sedan. The sweeping chrome accent strip on the side of the 1960 Oldsmobile is shown in the side view, centre, of the Oldsmobile "98" Scenicoupe.

1960 CHEVROLET



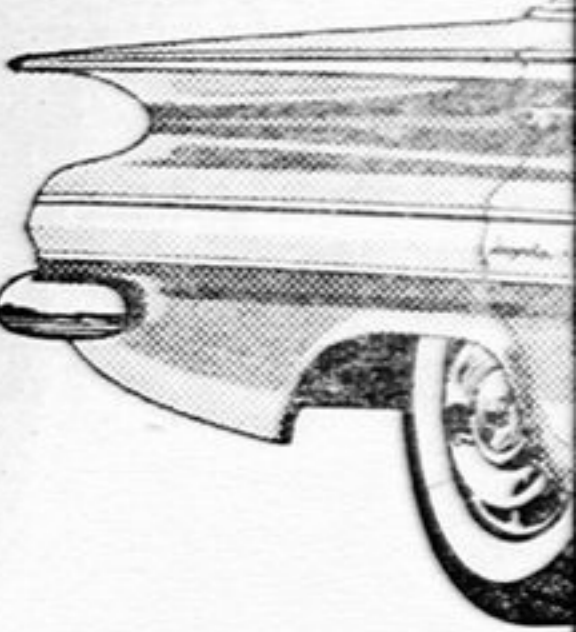
Again in 1960, Chevrolet will offer four series of conventional-size passenger cars, each individualized by trim, smartness of coachwork and equipment. Note design changes at the front and rear and in the low sweep of horizontal lines. A modish grille extends full-car width. The tail lamp ensemble is mounted beneath modified wings. Profile embellishments lend distinction between the Impala, Bel Air and the Biscayne series and their associated station wagons. The all-new Corvair, an entry in the compact car field, and a 1960 Corvette sports car complete the 1960 Chevrolet line.

1960 CHEVROLET CORVAIR



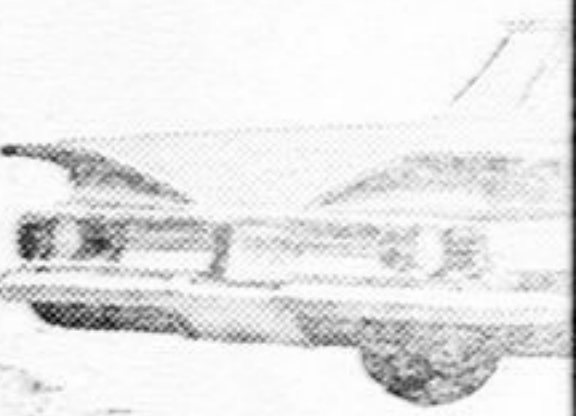
These two views of the new compact Chevrolet Corvair show its excellent all-around visibility, smooth styling and sleek appearance. The Corvair is only four feet three inches high and 15 feet long, yet it accommodates six people with ease. A light-weight air-cooled engine in the rear, independent four-wheel suspension system and unitized construction of frame and body are innovations.

Here today



here for the elegant

THE 1960



If ever a car stood '60 Chevy. From rear deck, its style. You'll be just as w... relaxing roominess,

now



**A. TINNI**

SOUTH MONAGHAN MIN

The following correspo presented by the Clerk:

Hydro Electric, seven

Aerial Farm Statistics, and explaining aerial mapp cost to the Municipality. (N

Department of Agricult of \$88.94 representing Gove warble fly. (received).

Provincial Department Pollution Control Act with amended in 1959. (received)

County Registrar, enc account. (received).

The meeting adjourn seconded by Jay Whittington at eight p.m.