

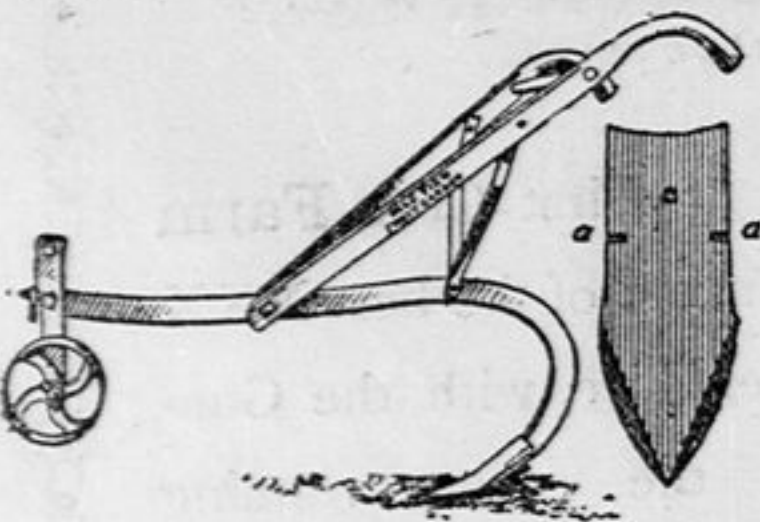
FARM AND GARDEN

A HOMEMADE SUBSOILER.

An Implement to Follow the Breaking Plow in Clay Subsoil.

A Rural New Yorker correspondent sends to that journal a plan for making an excellent little single horse subsoiler that works to perfection and need not cost more than \$2.50.

I first made a model, this being cut from thin wood, and, as good fortune favored me, I secured just the right shape the first trial.



HOMEMADE SUBSOILER FLOW.

enough for a draft horse. The share, or point, is of a peculiar shape, and is made of a new, large, steel "bull tongue" cultivator "shovel" three inches wide.

To those unfamiliar with the practice of subsoiling it may be well to say that this implement is planned to follow the breaking plow, tearing up and mellowing the bottom of the furrow to the depth of about eight inches.

A Potato of Good Yield and Quality.

The Joseph potato has received favorable mention from some of the New England potato growers.



THE JOSEPH POTATO.

cellent photograph of the potato as raised by a Vermont farmer and says: It is well to notice the size, shape and general appearance of the potato.

To Prevent a Cow From Sucking Herself.

I enclose a sketch of a contrivance to prevent cows from sucking themselves.



FOR SELF-SUCKING COW.

find it very successful. I went to my harnessmaker, and got him to make a halter for the cow's head, and a leather strap, six feet long, to go around just behind the front legs, and then I got the rest made of iron.

BEE PROBLEMS.

Photographing Bees - Their Habits. Especially Their Polyandrous One, to Be Fully Investigated.

Just how the problem will be solved has not yet been decided upon in all cases, but some of the proposed experiments are interesting in prospect.

USE AND VALUE OF LUPINES.

Some Information Concerning Them as Plants for Green Manuring.

Among nitrate-producing plants suitable for green manuring lupines have long held a prominent place.

THE MOST PROFITABLE HOG.

Experiments Which Seem to Indicate the Pig to Breed for Profit.

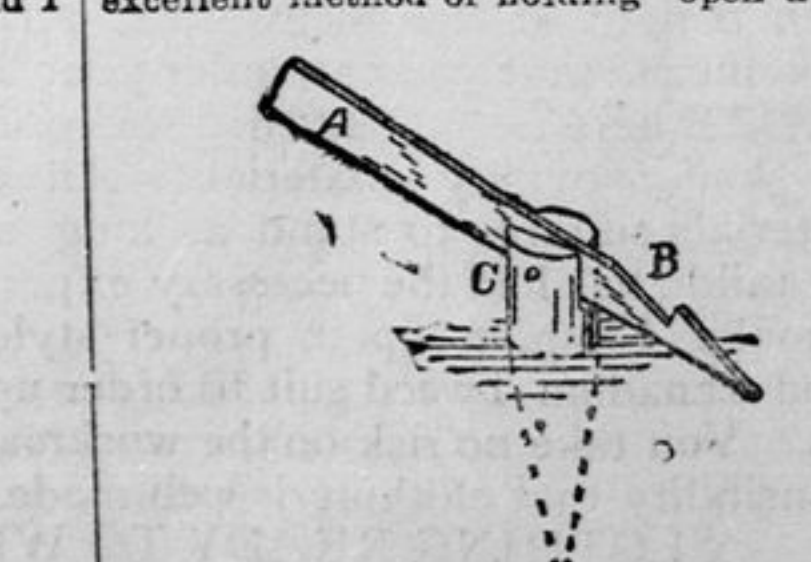
If a person who knows anything at all about hog feeding was given a chance between a hog that would gain 20 pounds in six weeks and one that would gain 90 pounds in the same time on the same feed, he would not be long in choosing.

Experimental Farm Forestry.

The plantation at the Experimental Farm planted 11 years ago is now flourishing, some of the trees being 20 feet high.

FOR HOLDING GATE OPEN.

In a wind, A is a piece of inch board four feet long, notched at B and slanting at the lower end.



find it very successful. I went to my harnessmaker, and got him to make a halter for the cow's head, and a leather strap, six feet long, to go around just behind the front legs, and then I got the rest made of iron.

PIG FORM.

A Contrast From Selections by the Canadian Packing Company.

The term "bacon type" has a significance which hog-raisers are gradually coming to recognize, for when the buyer comes round "form" is one of the characteristics he looks for.

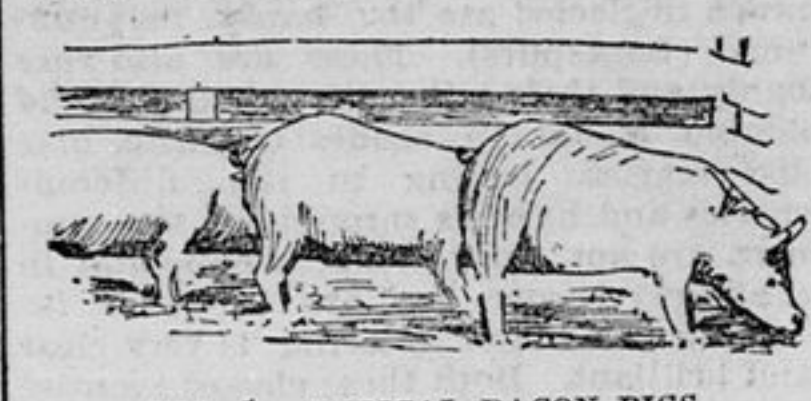


FIG. 1.—TYPICAL BACON PIGS.

shipped by Messrs. White Bros. of St. Mary's, says The Farmer's Advocate. They were fed in large runs on skim milk and buttermilk from St. Mary's Creamery, together with shorts, corn and oat chop.

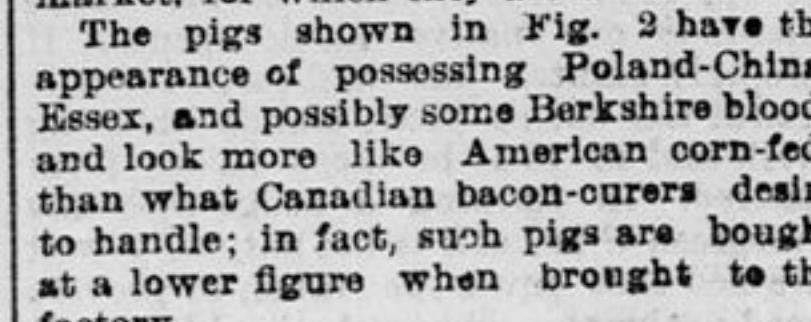


FIG. 2.—HOGS TOO FAT AND SHORT FOR BACON.

There is, however, a worse feature than fatness in many of the pigs received at the factories at the present time. We were taken through the rooms where the boxes are packed to be shipped, and shown the cured sides just out of the cold curing chambers, and the proportion of soft sides among those examined was alarmingly large.

THE SHEEP INDUSTRY.

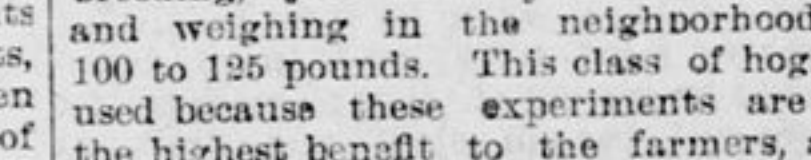
More Thoroughbreds Imported Into Canada This Summer Than for Many Years—A Genuine Revival.

Not for many years have so large a number of sheep of the different breeds been imported to Canada as have been brought out this summer.

NOTES ON DRIVING.

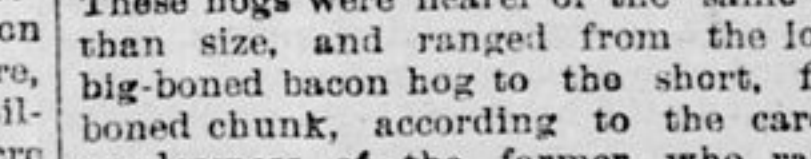
A Four-Horse and a Three-Horse Hitch Described and Illustrated.

Many and various are the methods of driving horses with the three and four-horse lines.



A FOUR-HORSE HITCH.

to try any other way, as it gives a direct line on three of the horses' bits.

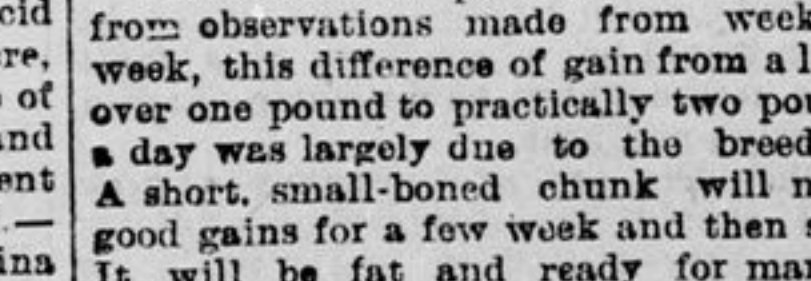


DRIVING THREE HORSES ABEAST.

strap, or these may be fastened together in hame rings with halter straps, as the horses work best.

Emergency Power.

On a farm, a cheap improvised power sometimes comes very handy.



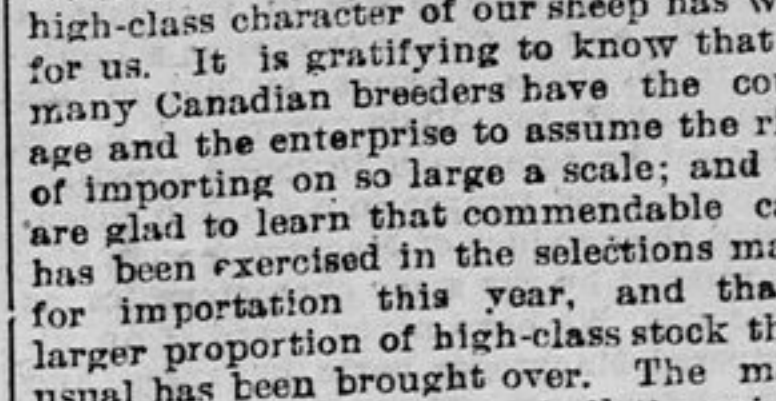
EMERGENCY POWER.

be rigged up in a few minutes, and can be used to stretch wire, pull stumps, move buildings, etc.

THE SHEEP INDUSTRY.

More Thoroughbreds Imported Into Canada This Summer Than for Many Years—A Genuine Revival.

Not for many years have so large a number of sheep of the different breeds been imported to Canada as have been brought out this summer.



LINCOLN RAM LAUGHTON, 235 GUINEAS 4613.

Winner of first and champion prize, R.A.S.E. Show, Maidstone, 1898.



HAMPSHIRE YEARLING EWES.

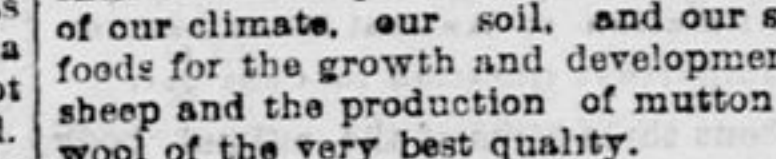
First prize pen of same flock, Royal Show, Maidstone, 1898.

Canada amply demonstrates that we have a country admirably adapted to the production of this class of stock in the highest degree of perfection.

Canada amply demonstrates that we have a country admirably adapted to the production of this class of stock in the highest degree of perfection.

EMERGENCY POWER.

On a farm, a cheap improvised power sometimes comes very handy.



EMERGENCY POWER.

be rigged up in a few minutes, and can be used to stretch wire, pull stumps, move buildings, etc.

be rigged up in a few minutes, and can be used to stretch wire, pull stumps, move buildings, etc.

be rigged up in a few minutes, and can be used to stretch wire, pull stumps, move buildings, etc.

be rigged up in a few minutes, and can be used to stretch wire, pull stumps, move buildings, etc.

be rigged up in a few minutes, and can be used to stretch wire, pull stumps, move buildings, etc.

be rigged up in a few minutes, and can be used to stretch wire, pull stumps, move buildings, etc.

be rigged up in a few minutes, and can be used to stretch wire, pull stumps, move buildings, etc.

be rigged up in a few minutes, and can be used to stretch wire, pull stumps, move buildings, etc.

be rigged up in a few minutes, and can be used to stretch wire, pull stumps, move buildings, etc.

be rigged up in a few minutes, and can be used to stretch wire, pull stumps, move buildings, etc.

be rigged up in a few minutes, and can be used to stretch wire, pull stumps, move buildings, etc.

be rigged up in a few minutes, and can be used to stretch wire, pull stumps, move buildings, etc.

be rigged up in a few minutes, and can be used to stretch wire, pull stumps, move buildings, etc.

be rigged up in a few minutes, and can be used to stretch wire, pull stumps, move buildings, etc.

be rigged up in a few minutes, and can be used to stretch wire, pull stumps, move buildings, etc.

be rigged up in a few minutes, and can be used to stretch wire, pull stumps, move buildings, etc.

be rigged up in a few minutes, and can be used to stretch wire, pull stumps, move buildings, etc.

be rigged up in a few minutes, and can be used to stretch wire, pull stumps, move buildings, etc.

be rigged up in a few minutes, and can be used to stretch wire, pull stumps, move buildings, etc.

be rigged up in a few minutes, and can be used to stretch wire, pull stumps, move buildings, etc.

be rigged up in a few minutes, and can be used to stretch wire, pull stumps, move buildings, etc.

be rigged up in a few minutes, and can be used to stretch wire, pull stumps, move buildings, etc.

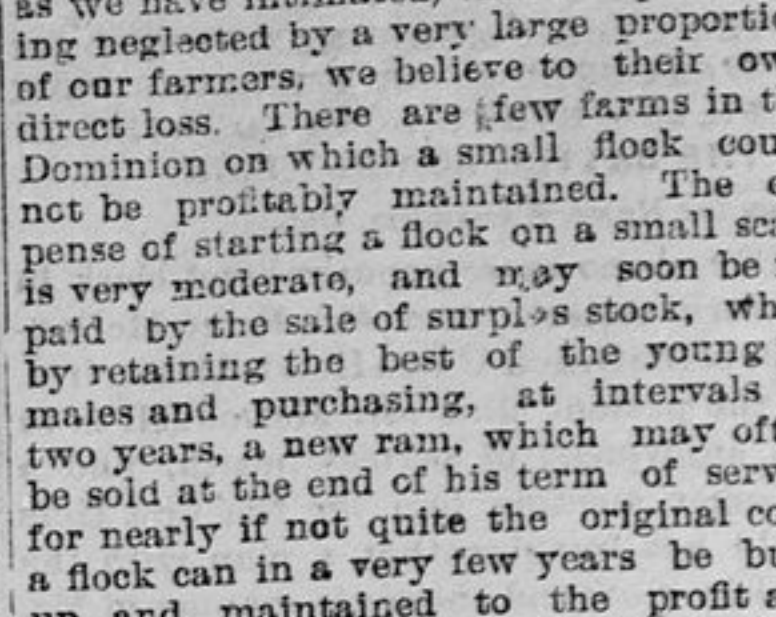
be rigged up in a few minutes, and can be used to stretch wire, pull stumps, move buildings, etc.

be rigged up in a few minutes, and can be used to stretch wire, pull stumps, move buildings, etc.

be rigged up in a few minutes, and can be used to stretch wire, pull stumps, move buildings, etc.

KEEPING OUT SURFACE WATER.

Where wells are dug on sloping ground there is always liability that surface water may find its way into the well and carry in deleterious matter.



TO KEEP OUT SURFACE WATER.

such cases it is wise to leave the soil removed from the well when it is being dug in the form of a mound about the top, as suggested in the cut, and to make matters still safer, to lay a tile drain around from the upper side to an outlet on the lower side, laying the tile all the way about the proposed opening.

IT HANGS ON.

If it was only health, we might let it cling.

But it is a cough. One cold no sooner passes off before another comes. But it's the same old cough all the time.

And it's the same old story, too. There is first the cold, then the cough, then pneumonia or consumption with the long sickness, and life trembling in the balance.

AYER'S CHERRY PECTORAL.

loosens the grasp of your cough. The congestion of the throat and lungs is removed; all inflammation is subdued; the parts are put perfectly at rest and the cough drops away. It has no diseased tissues on which to hang.

DR. AYER'S CHERRY PECTORAL PLASTER.

draws out inflammation of the lungs.

PRICE LIST.

- of Good at LENNON'S Brooms... 10c each Brushes from... 4c up 10 bars soap... 25c 3 boxes shoe blacking... 10c A good whip... 1.00 6 knives and forks... 60c 6 cups and 6 saucers... 35c Clothes baskets... 35c Clothes lines... 5c and up 42 clothes pins... 5c Big tin pail... 25c Big dish pan... 15c 1 hand lamp... 1.00 up Tea pots... 5, 10 and 15c Egg beaters... 1.00 up 4 spools thread... 15c 4-bladed pocket knife... 20c 1 claw-hammer... 20c

NEW AND SECOND-HAND FURNITURE.

Bedroom Sets, Springs, Mattresses, Chairs, Tables, Lounges, Stoves and Stovepipes, Crockery, Glassware and Tinware.

Will trade you new furniture for old furniture. All kinds of second-hand furniture bought at...

LENNON'S

OPPOSITE THE WILSON HOUSE All Kinds of Feathers Wanted