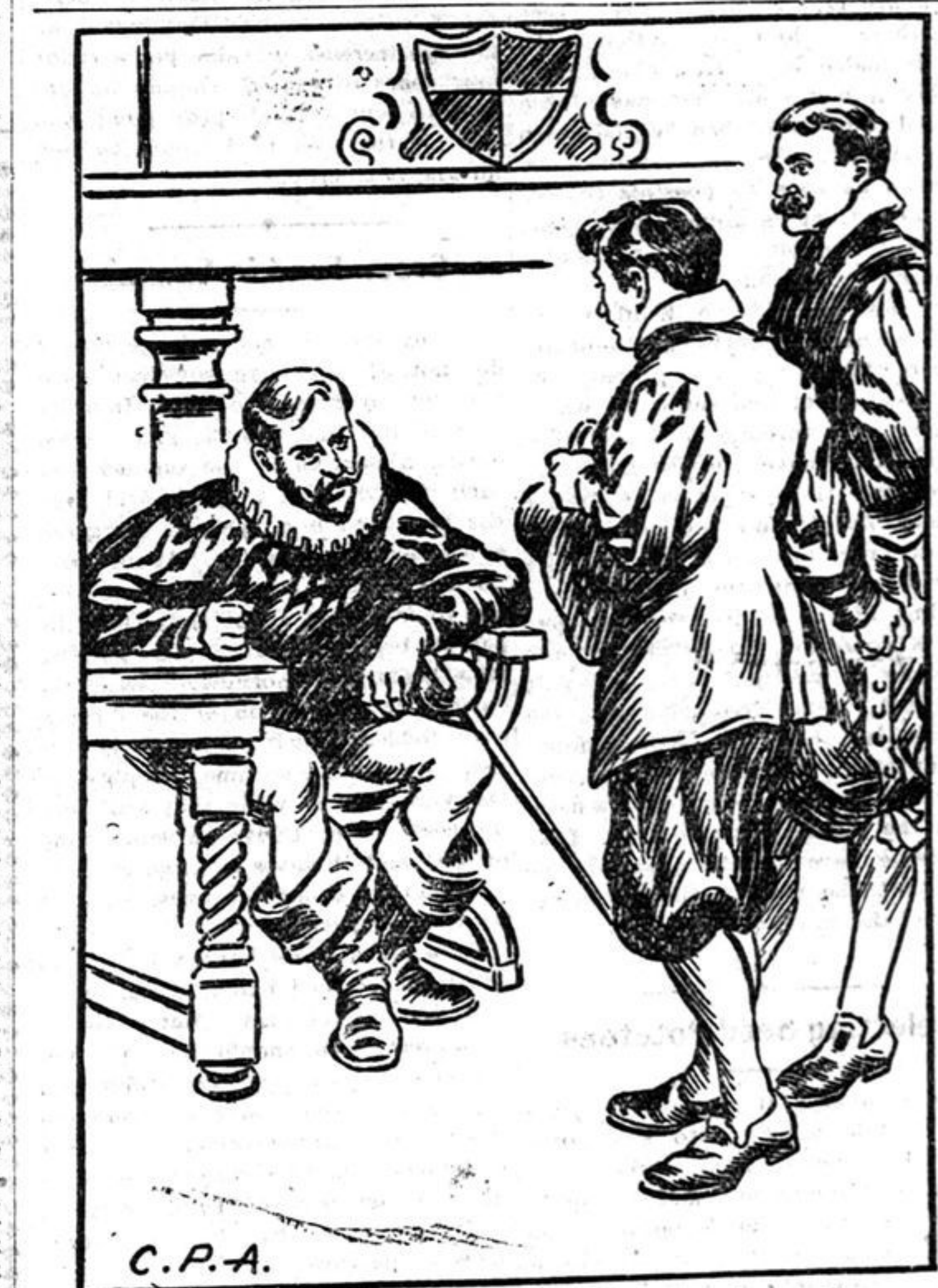


Watches, Jewellery, Clocks, and various small advertisements for watchmakers and jewelers.

Physician, DR. F. BLANCHARD, DR. FULTON S. VROOMAN, OLIVE M. REA, M. D., C. M., M. B. Annis, D. O., Dentistry, Barristers, etc.

The Helmet of Navarre. Continued from page two. My thrifty father had not seen it to...

free air and saw below me the Rue Couperjars and the sign of the Amour de Dieu. The next instant a cloth fell over my face and was twisted tight; strong arms pulled me back and a deep voice commanded: "Close the shutter."



"Monsieur," I cried, "there is a plot to murder you." "Have a care now, monsieur; no man may be armed, spoke the rough voice of a man without breeding."

Gervais looked doubtful, the most encouraging attitude toward me he had yet assumed. He answered: "If he had not said the name 'Stunt!' interrupted Yeu-gris. 'It is a coincidence, no more. If he were what you think it is, the very last name he would have said.'"

It Will Pay You. WHEN IN TOWN TO CALL at Anderson, Nugent & Co's and inspect their new stock of HIGH-CLASS FURNITURE EVERY LINE COMPLETE.

Anderson, Nugent & Co. Kent Street, Lindsay. Undertaking in all its Branches. RETIRING from Business. After 34 years of successful business in Lindsay, I have decided to sell my whole stock of: Pipes, Tobacco, Cigars, Fancy Goods, Hair Goods, Wagons, Sleighs, Baby Carriages, Jewellery, Spectacles, Chinaware, School Books and Shop Furniture at and below cost.

The Lindsay Lumber Co. (Sadler & Fee). Lumber of all kinds, Dressed Lumber, Mouldings, Base, Casings and Factory Work, Shingles, Lath, Posts and Bill Timber, Cement, Lime and Plasters. OFFICE - Corner Kent and Lindsay Streets. YARDS - King Street. Phone 230.

Seeds that Grow. Mangels: Mammoth Long Red, Yellow Intermediate, Yellow Leviathan, Sugar Mangel, Tankard Cream, Golden Tankard. Turnips: Elephant, Skirvin, Bangholm, Jumbo, Rennie's Prize, Kangaroo, Gray Stone, Hartley's Bronze, Carter's Giant.

Dunoon's DRUG STORE. The Canada Paint Company. PRISM BRAND Ready-Mixed PAINTS. Th cold RELIABLE PAINTS made from Pure Lead and Oil in the latest artistic shades in any quantity.

McLennan & Co. HARDWARE, COAL, IRON. SIXTY Per Cent. of all headaches are caused through defective eyes. LITTLE eye defects grow to big ones if not properly attended to. Your eyes properly tested free.

Grand Trunk Railway Time Table. ARRIVALS: 60 From Toronto, 5:00 a.m.; 69 From Peterboro, 8:00 a.m.; 32 From Haliburton, 8:55 a.m.; 21 From Port Hope, 9:15 a.m.; 30 From Cobocook, 10:10 a.m.; 22 From Toronto, 10:50 a.m.; 35 From Port Hope, 2:05 p.m.; 42 From I. B. & O. Jct., 5:45 p.m.; 23 From Port Hope, 6:23 p.m.; 24 From Whitty, 7:30 p.m.; 54 From Toronto, 7:30 p.m.; 56 From Whitty, 9:15 a.m.; 18 From Toronto, 9:20 p.m.; 11 From Belleville, 9:43 p.m. DEPARTURES: 34 For Port Hope, 6:00 a.m.; 51 For Toronto, 6:30 a.m.; 10 For Belleville, 7:20 a.m.; 21 For Toronto, 8:15 a.m.; 43 For I. B. & O. Jct., 11:00 a.m.; 55 For Whitty, 11:05 a.m.; 27 For Toronto, 12:05 p.m.; 23 For Haliburton, 2:40 p.m.; 33 For Toronto, 6:23 p.m.; 51 For Cobocook, 6:30 p.m.; 18 For Peterboro, 8:05 a.m.; 69 For Toronto Falls, 8:15 p.m.