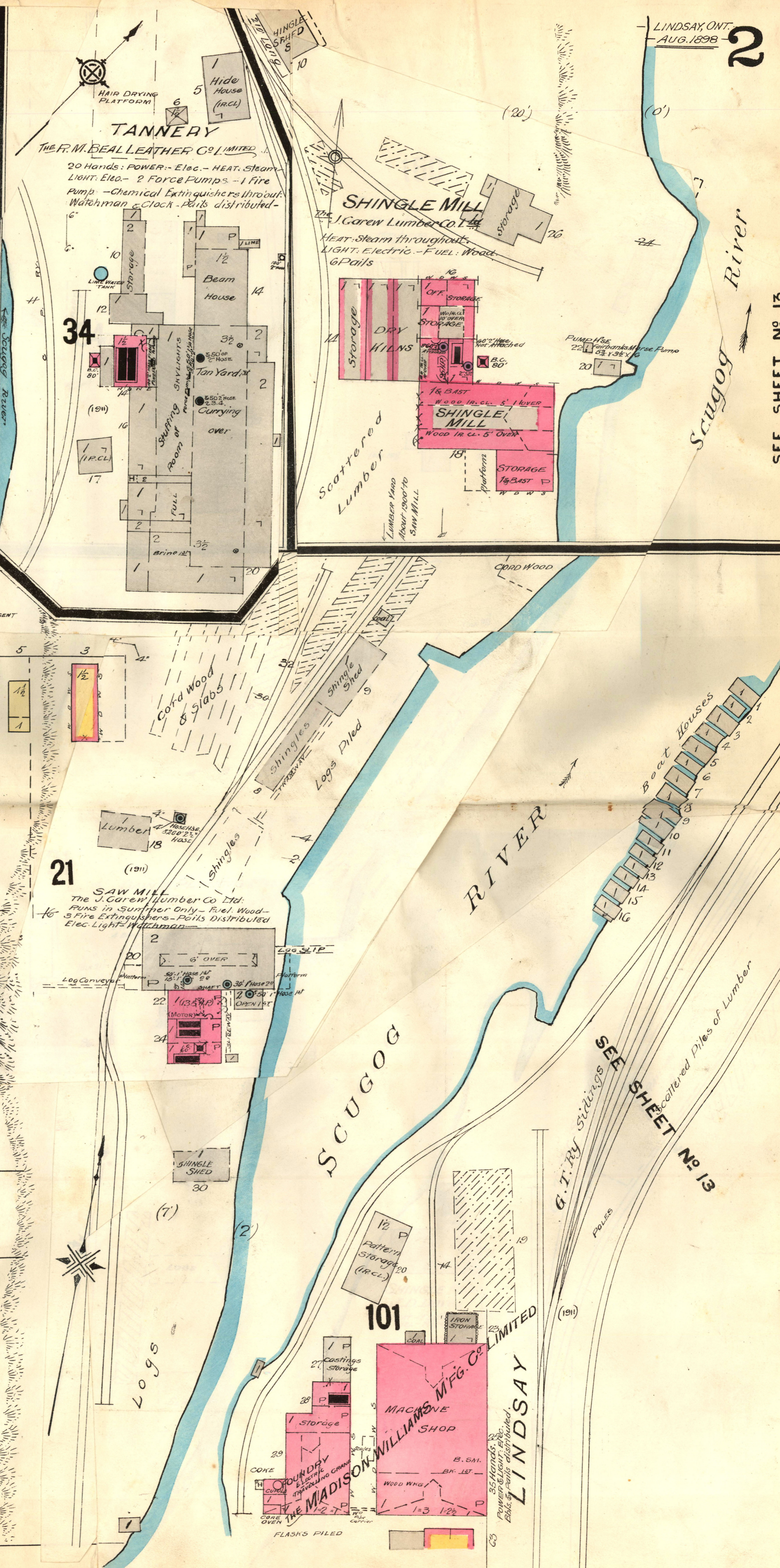
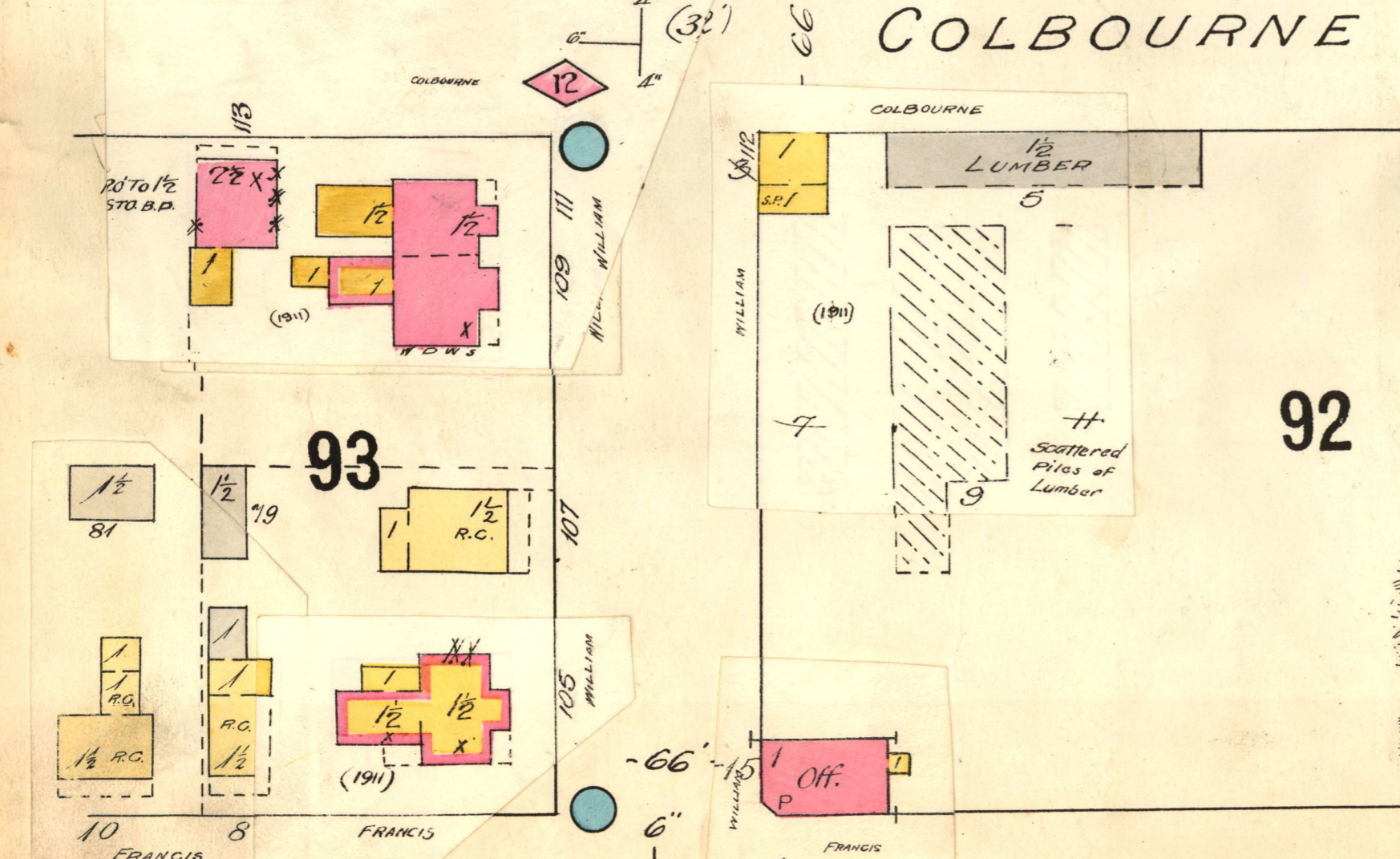
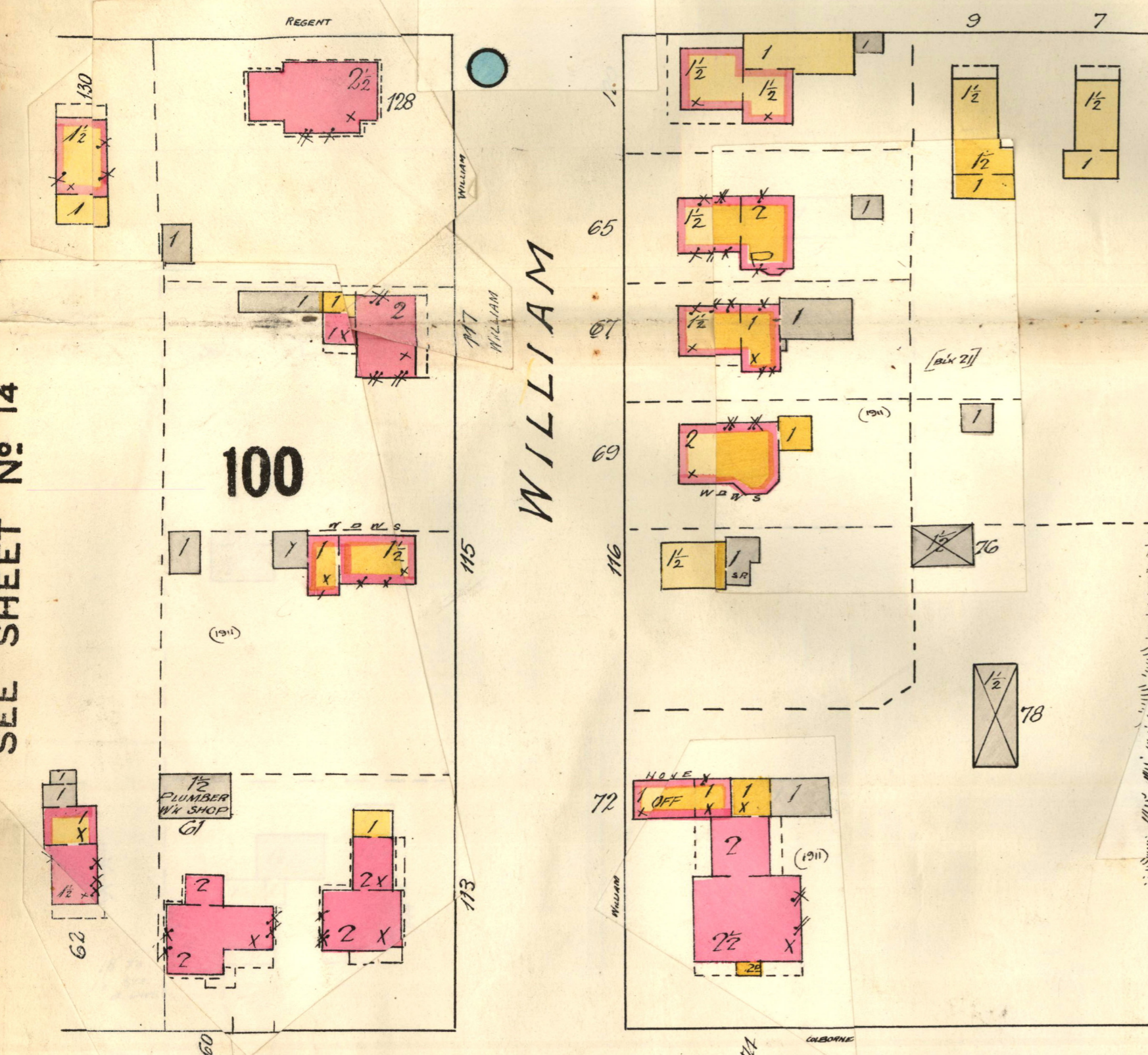
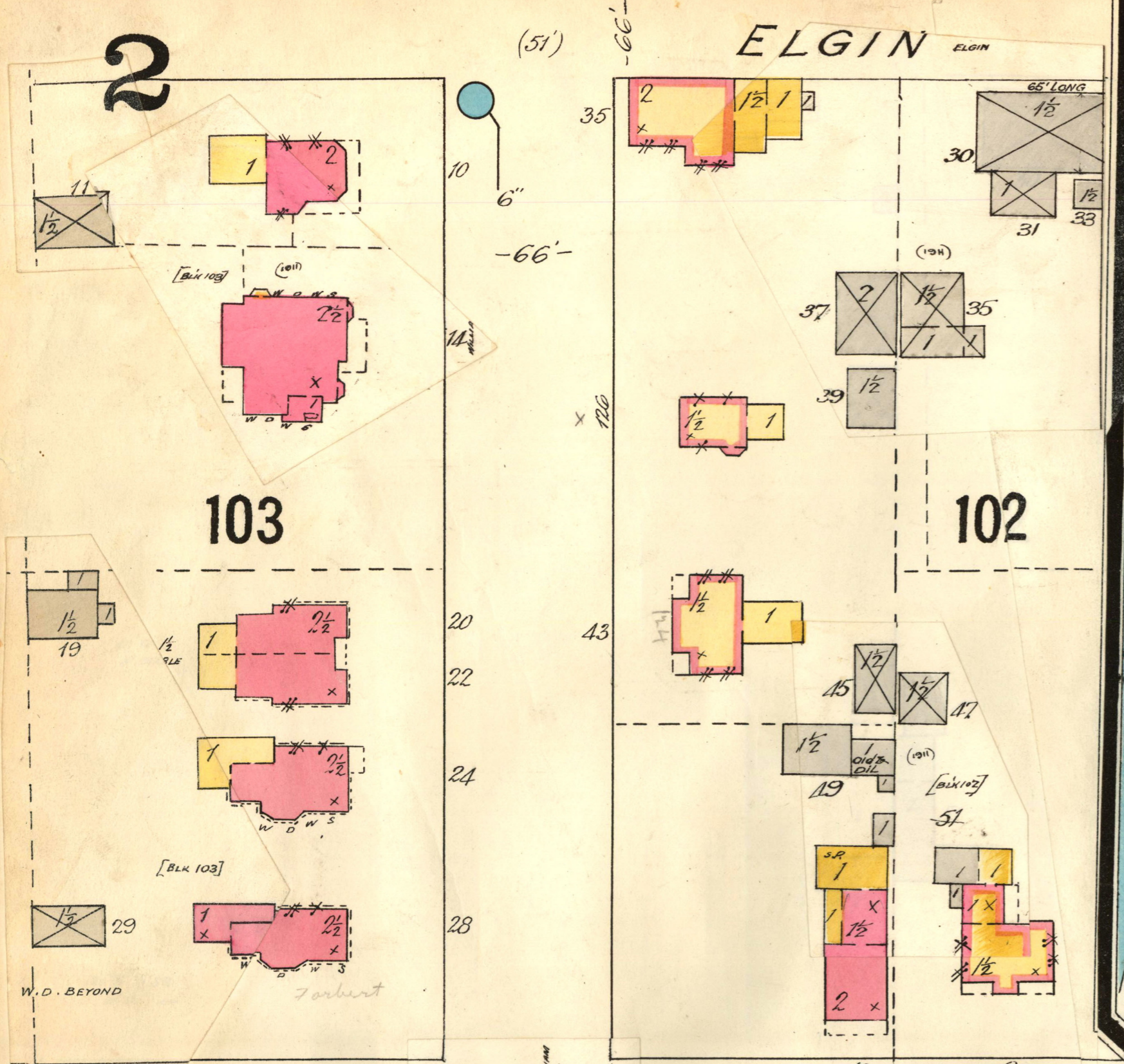


TANNERY
THE R. M. BEAL LEATHER CO. LIMITED
20 Hands: POWER - Elec. - HEAT - Steam
LIGHT: Elec. - 2 Force Pumps - 1 Fire
Pump - Chemical Extinguishers throuth
Watchman & Clock - Pails distributed

SHINGLE MILL
The J. Carew Lumber Co. Ltd.
Heat - Steam throuthout
LIGHT: Electric - FUEL: Wood
6 Pails

SAW MILL
The J. Carew Lumber Co. Ltd.
Runs in Summer Only - Fuel: Wood -
5 Fire Extinguishers - Pails Distributed
Elec. Light - Watchman

MADISON WILLIAMS MFG. CO. LIMITED
LINDSAY
35 Hands
Power & Light, Elec.
Pails & Poles distributed



SCALE 50 FT. = 1 INCH.

SEE SHEET NO 14

FRANCIS
SEE SHEET NO 4

SEE SHEET NO 9

SEE SHEET NO 13

SEE SHEET NO 13