

SMALL COLD STORAGE.

Prof. J. H. Ruddle Gives An Excellent Plan and Specifications.

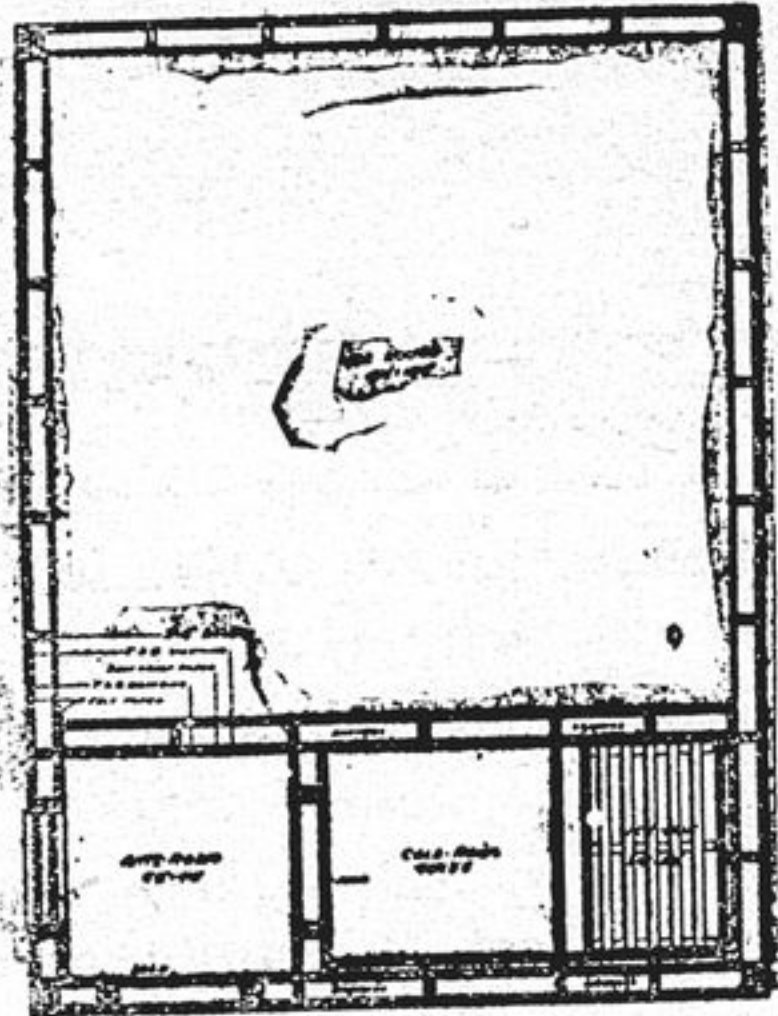
The accompanying plans are intended to illustrate a cheap, easily managed and fairly effective arrangement for securing cold storage on farms, or in connection with country stores or butcher shops.

All lumber except clapboards should be tongued and grooved, and spruce only should be used for the ice box, cold room and ante-room. No tar paper should be used on account of its strong odor.

The building will be better and more permanent if placed on a stone or concrete wall. Otherwise it must be well "banked" to prevent circulation of air underneath.

The extra course of lumber under the siding may be dispensed with on the walls of the ice chamber, but not on the other parts of the building.

The partitions between the ice chamber and the other compartments and also between the ice box and the cold room, need to be well insulated.



SMALL COLD STORAGE PLAN.

Rated as shown to prevent dampness. A poorly insulated partition against an ice chamber will become cold on the surface and consequently collect moisture. Many refrigerators and cold storages are failures from this cause. Emphasis is laid on this point because we often find thin partitions placed between the ice chambers and the cold rooms on the theory that refrigeration secured in this direct way is all that is needed. Dryness in a refrigerator is just as important as a low temperature.

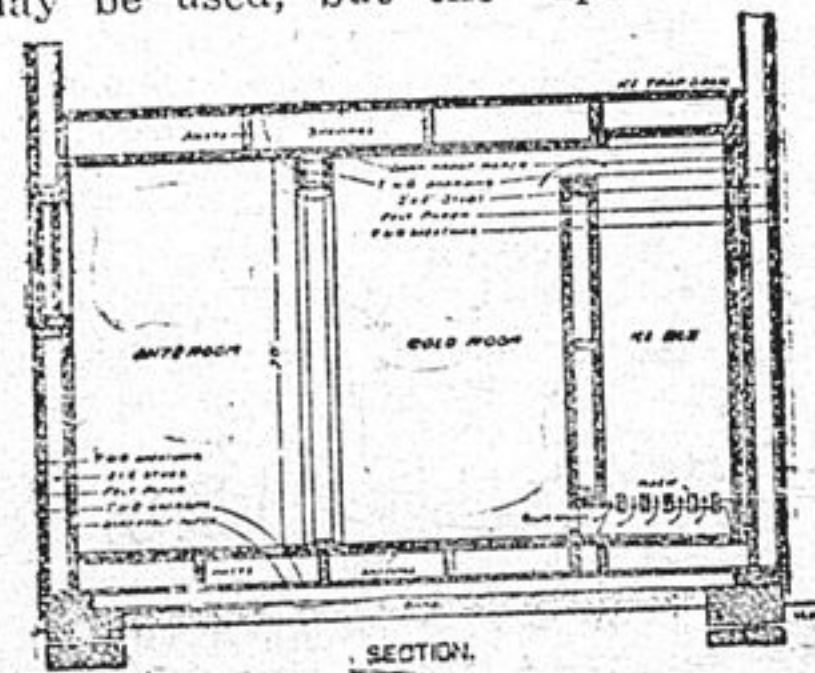
No roof is shown in the plan. That is left to the fancy of the builder. Sufficient room must be left above the small compartments to allow of the blocks of ice being transferred to the ice box through the ice trap door. The window in the ante-room has double sash, each sash being double glazed, giving four thicknesses of glass.

The floor under the ice box should be covered with galvanized iron sloping in one direction with a gutter at the lower edge to carry off the water from the melting ice. The drain pipe from the gutter must be trapped to prevent the passage of air. A simple plan is to have the end of the pipe turned down and extending nearly to the bottom of a small dish or vessel of any kind so that the water will rise above the end of the pipe before the dish overflows.

Planing mill shavings are highly recommended for filling the spaces between studding and joists as shown on plans. They are always dry and do not become musty. If they cannot be procured, sawdust is probably the next best thing, but it should be thoroughly dried before being used. The spaces between the studding around the ice chamber should not be filled. Any filling will eventually become damp from the ice, and damp material of any kind has very little insulating value.

As there is no floor in the ice chamber the earth beneath it should be well drained. Cover the surface with 6 to 8 inches of broken brick, coal cinders, tan bark or other similar material of a non-conducting character. If nothing better can be procured use broken or cobble stone covered with a layer of gravel or sand. This material will make the permanent bed.

Before filling with ice put 8 inches of sawdust over the permanent bed. This should be renewed every year. The ice should be packed as closely as possible, filling all spaces with crushed ice or snow well rammed. Leave a space of 12 inches between the walls and the ice to be filled with dry sawdust. The top of the ice should also be covered with 12 inches of dry sawdust. If sawdust cannot be procured cut hay or straw may be used, but the space filled



SMALL COLD STORAGE SECTION.

should be 18 inches instead of 12, and the filling well packed. To utilize the cold room, fill the ice box with cleansed ice in lumps as large as convenient to handle. The box shown on the plans will hold about a ton of ice, so that it will not need to be filled often.

should be observed in 'keeping' the trap door tightly closed. The openings at the top and bottom of the partition between the ice box and the cold room may be fitted with a slide to regulate the circulation of air.

Particular attention must be paid to the keeping of the doors perfectly air-tight. A cushion of thick felt for the doors to close against is about the best thing to ensure a good joint.

Corn when fed to the hens by itself has a tendency to fatten rather than produce the most profitable egg laying.

Pumpkins for Pigs.

At the Dominion Experiment Station raw pumpkins were fed to pigs for a period of 107 days with satisfactory results. The cost of the increase in the weight of the pigs was \$3.08 per hundredweight. A total of 2,090 pounds of pumpkins and 1,981 pounds of mixed grain was consumed.

Pumpkins for Poultry.

Pumpkins are not to be despised as poultry food when birds are closely housed in winter. A pumpkin halved and hung against the wall will furnish green "filling" and be eaten to the rind in short order when other more tempting green stuff is lacking.

Just Stop and Think

before you buy your Christmas present. You may have been dealing with us for some time, or perhaps you have not. We think we show the finest, largest and best assorted stock in the County. Wedding Rings, Diamond Rings, Gem Rings of all kinds, Gentlemen's Rings. Our special blow is about our large stock of WATCHES. See our silver, gold and gunmetal Watches for boys and girls. Solid gold, gold filled and nickel cased Watches. We carry in stock over \$2,000 worth of Watches alone. Guards, Long Chains, Brooches, Stick Pins, and an endless variety of suitable Christmas gifts. Come and see for yourself.

S. J. Petty, the Jeweler.

LINDSAY.

MILNE'S BLOCK. 99 KENT ST.

Furniture and Undertaking.

Just received this week another lot of nice Baby Carriages that are **Special Value.**

Also Extension Tables, Sideboards and Bedroom Suites.

I carry in stock a full line of Parlour Suites Lounges, Chairs, Etc.

Picture framing a Specialty.

If you are in need of a Sewing Machine be sure and see my styles before buying.

L. DEYMAN.

FENELON FALLS GAZETTE

is printed every Friday at the office, corner May and Francis Streets.

SUBSCRIPTION:

\$1.00 A YEAR, IN ADVANCE

or one cent per week will be added, as long as it remains unpaid.

Advertising Rates.

Professional or business cards, 50 cents per line per annum. Casual advertisements, 8 cents per line for the first insertion, and 2 cents per line for every subsequent insertion. Contracts by the year, half year or less, upon reasonable terms.

JOB PRINTING executed neatly, correctly and at moderate prices.

E. D. HAND, Proprietor

Our new store is headquarters in

Fenelon Falls for

**GROCERIES,
READY-MADE CLOTHING,
CROCKERY,
GLASSWARE,
BOOTS & SHOES.**

JOS. McFARLAND.

MANY PERSONS

do not see as well as they should.

Others see well, but their eyes soon become tired.

Others suffer with constant headache that medicine does not relieve, because the headache comes from eye strain.

The proper remedy is a pair of glasses properly fitted.

We make no charge for examination.

BRITTON BROS.

OPTICIANS.

Foot of Kent St., Lindsay.

The Paint we Sell---



It's Good Paint.

JOS. HEARD.

Wall Paper.

We have a large stock of Colin McArthur's wall paper, the only paper made by double process. Don't be persuaded to buy any old thing. Just as well get the best.

Everything that is kept by an up-to-date hardware in stock.

I HAVE PURCHASED W. McKEOWN'S FURNITURE BUSINESS,

and will carry a large and up-to-date stock of furniture.

Am also prepared to do all kinds of

Carriage Making, Repairing and Repainting,

and to make

DOORS AND SASH.

Planing done on short notice.

S. S. Gainer.

SECOND DIVISION COURT
—OF THE—
County of Victoria.

the next sittings of the above Court will be held in Twomey's hall, Fenelon Falls

ON MONDAY, APRIL 10th, 1905,

commencing at 1 o'clock in the afternoon. Thursday, March 30th, will be the last day of service on defendants residing in this county. Defendants living in other counties must be served on or before Saturday, March 25th.

Office hours from 10 a. m. to 4 p. m.
ELISHA MARK, E. D. HAND,
Bailiff. Clerk.
Fenelon Falls, Jan. 12th, 1905.

YOU NEED NOT GO

To Montreal or New York for choice patterns or low prices in

WALL PAPER.

We have them here now for your selection.

GOODWIN'S, LINDSAY,

NEXT TO SIMPSON HOUSE.

DIRECTORY.

SOCIETIES.

K NIGHTS OF TENTED MACCABEES
Diamond Tent No. 208. Meets in the True Blue hall on McArthur's Block on the first and third Tuesday in each month.
CHAS. WISE, Com.
C. W. BURGONNE, R. K.

C ANADIAN ORDER OF ODDFELLOWS
Trent Valley Lodge No. 71. Meet in the Orange hall on Francis street west on the first and third Mondays in each month.
WM. DEYMAN JR., N. G.
J. T. THOMPSON JR., Sec.

L O. L. No. 996. MEET IN THE ORANGE Hall on Francis-St. West on the second Tuesday in every month.
LEWIS DEYMAN, W. M.
S. D. BARR, Rec.-Sec.

E MPIRE LOYAL TRUE BLUE LODGE
No. 198, meets first Friday of each month in Orange hall. Visiting brethren always welcome.
THOS. JOHNSTON, W. M.
WM. BRANDON, Rec. Sec.

I NDEPENDENT ORDER OF FORESTERS
Court Phoenix No. 182. Meet on the last Monday of each month, in the True Blue hall in McArthur's Block.
D. GOULD, Chief Ranger.
THOS. AUSTIN, R. S.

C ANADIAN ORDER OF FORESTERS,
Fenelon Falls Lodge No. 626. Meets in the Orange Hall on Francis street west on the last Thursday of each month.
F. SMITHERAM, Chief Ranger,
W. D. STACY, Sec.

C ANADIAN HOME CIRCLES. FENE LON Falls Circle No. 127, meets in the True Blue hall in McArthur's Block the first Wednesday in every month.
P. C. BURGESS, Leader.
R. B. SYLVESTER, Secretary.

A F. AND A. M., G. R. C. THE SPRY Lodge No. 406. Meets on the first Wednesday of each month, on or before the full of the moon, in the lodge room in Cunningham's Block.
W. H. ROBSON, W. M.
E. FITZGERALD, Secretary.

CHURCHES.

B APTIST CHURCH—QUEEN ST., REV. J. H. HANNAH, Minister. Preaching services every Sunday at 10.30 a. m. and 7 p. m. Bible Class and Sunday School at 2.30 p. m. Praise and prayer service on Thursday at 8 p. m.

M ETHODIST CHURCH—COLBORNE Street—Rev. H. B. Kenney, Pastor. Sunday service at 10.30 a. m. and 7 p. m. Sabbath School at 2.30 p. m. Epworth League of Christian Endeavor on Tuesday evening at 8 o'clock. Prayer meeting on Thursday at 7.30.

S T. ANDREW'S CHURCH—COLBORNE Street—Rev. R. C. H. Sinclair, Pastor. Services every Sunday at 10.30 a. m. and 7 p. m. Sunday School every Sunday at 2.30 p. m. Christian Endeavor meeting every Tuesday at 8 p. m. Prayer meeting every Thursday at 7.30 p. m.

S ALVATION ARMY—BARRACKS ON Bond St. West—Captain Stephens and Lieutenant Brass. Service every Wednesday, Thursday and Saturday evenings at 8 o'clock, and on Sunday at 11 a. m., 3 p. m. and 7.30 p. m.

S T. ALOYSIUS R. C. CHURCH—LOUISA Street—Rev. Father O'Leary, Pastor. Services every alternate Sunday at 10.30 a. m. Sunday School every Sunday afternoon at 2 o'clock.

S T. JAMES' CHURCH, BOND ST. EAST, Rev. A. S. Dickinson, Rector. Sunday service: Matins 10.30 a. m.; evensong at 7 p. m. Celebration of Holy Communion first Sunday of every month at 10.30 a. m. and third Sunday of every month at 8 a. m. Sunday School 2.30 p. m. Thursday every week as follows: Catechising of children at 7 p. m., evensong at 7.30 p. m., choir practice at 8.15 p. m.

Seats free in all churches. Everybody invited to attend. Strangers cordially welcomed.

MISCELLANEOUS.

P UBLIC LIBRARY—MRS M. E. CALDER Librarian. Reading Room open daily, Sunday excepted, from 10 o'clock a. m. till 10 o'clock p. m. Books exchanged on Tuesdays, Thursdays and Saturdays from 2 p. m. to 4 p. m., and in the evening from 7 to 9.

P OST-OFFICE—F. J. KERR, POSTMASTER. Open daily, Sundays excepted, from 7.30 a. m. to 7 p. m. Mail going south closes at 7 p. m. Letters for registrars must be posted half an hour previous to the time for closing the mails.

NEWSPAPER LAW.

1. A post-master is required to give notice by letter (returning the paper does not answer the law), when a subscriber does not take his paper out of the office, and state the reasons for its not being taken. Any neglect to do so makes the postmaster responsible to the publisher for payment.
2. If any person orders his paper discontinued he must pay all arrears, or the publisher may continue to send it until payment is made, and collect the whole amount whether the paper is taken from the office or not. There can be no legal discontinuance until the payment is made.
3. Any person who takes a paper from the post office, whether directed to his name or another, or whether he has subscribed or not, is responsible for the pay.
4. If a subscriber orders his paper to be stopped at a certain time and the publisher continues to send it, the subscriber is bound to pay for it if he takes it from the post-office. This proceeds upon the ground that a man must pay for what he uses.
5. The courts have decided that refusing to take newspapers and periodicals from the post-office, or removing and leaving them uncalled for, is *prima facie* evidence of intentional fraud.