



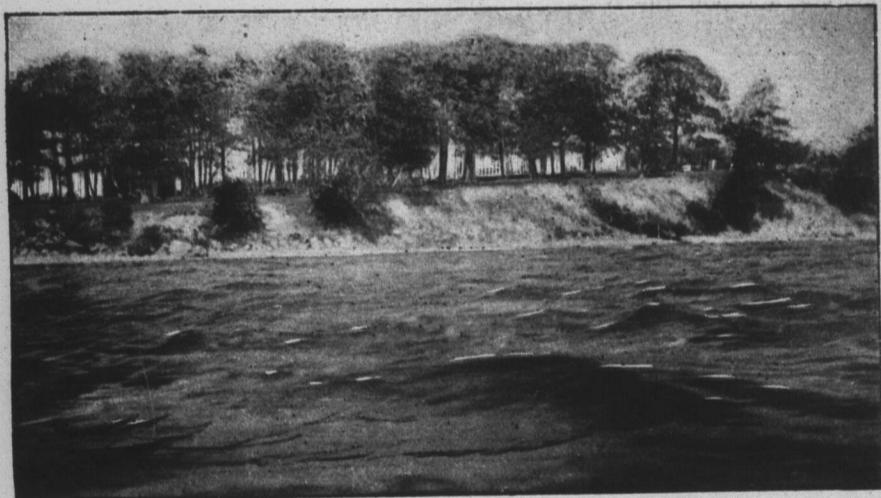
THE LATE SIR JOHN A. MACDONALD

Cameron, Boskung, Twelve Mile, Beech and Maple; the picturesque beauty of the Mud Turtles, the Horse-shoes, mountain and Sonora, coupled with the unsurpassed fishing and hunting along the entire chain, lend to these waters an attraction and a charm. The quiet beauty of England's "Lake District," the solemn loveliness of Italian and Swiss waters, the beauties of Killarney, and the poetic splendour of Lomond, Katrine

North Victoria Village Summer Resorts.

The Grand Trunk Railway System—Midland Division traverses North Victoria. The Coboconk branch from Woodville and Lorneville at the west reaches the waters at the following places:

KIRKFIELD, a beautiful village, near Balsam Lake and on the route of the Trent Canal, with good hotel accommodation. This village



WASHBURN ISLAND, LAKE SCUGOG, SOUTH VICTORIA

or Achray are all reproduced within the compass of Victoria and Haliburton.

The Grand Trunk Railway Company issues special tourists' tickets to all their stations along these beautiful waters. The ease with which any point along the system may be reached, and the facility with which, from the solitude of primeval forests, deep glades, mountain dells, babbling brooks, and enchanting lakes, the haunts of fish and game, the tourist may find a base of supplies, together with the superiority of the scenery, are among the causes rendering these lakes such favourite camping resorts.

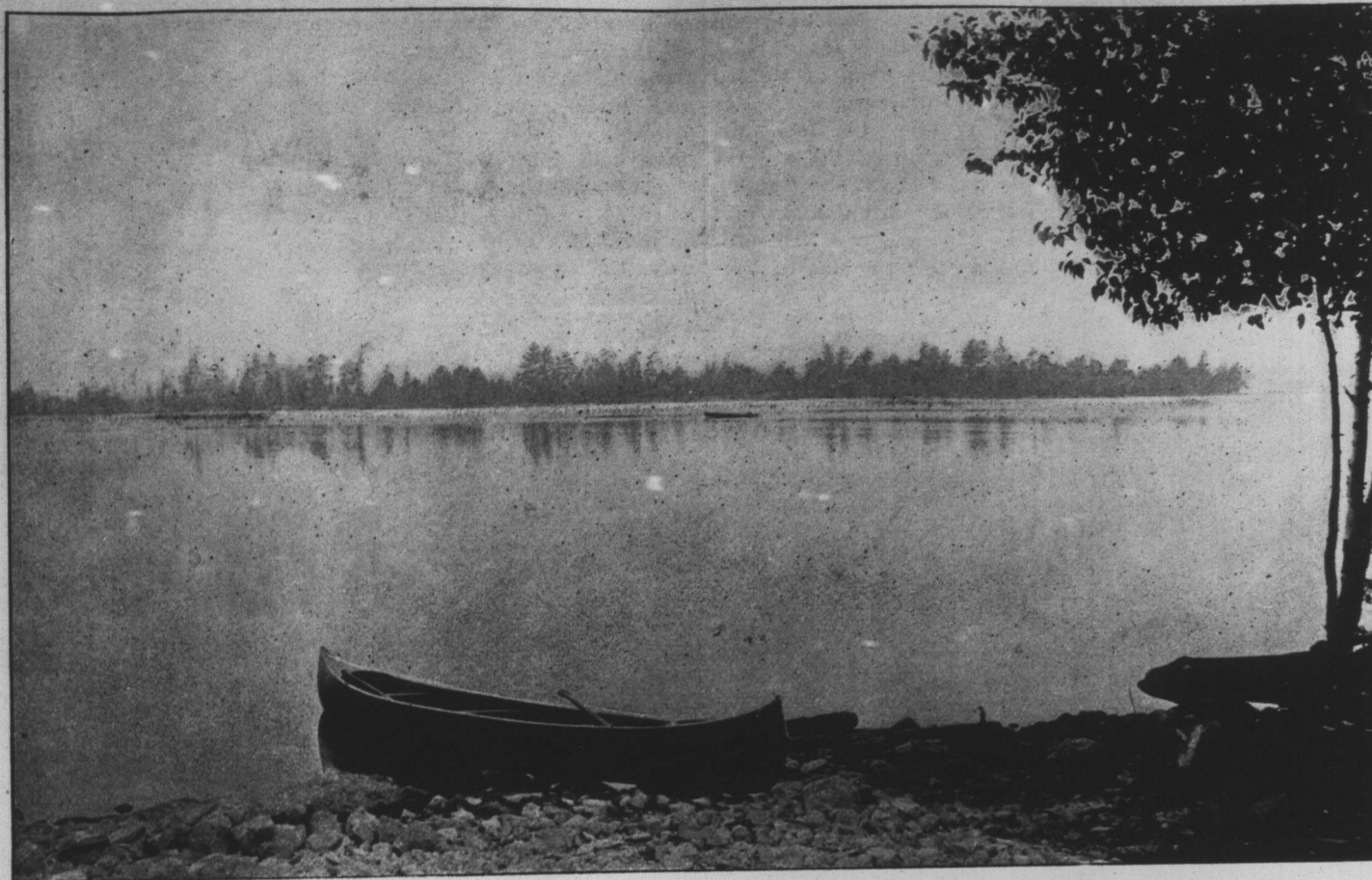
Fish abound. Bass and maskinonge are plentiful in the limestone waters; i.e., as far up as the head of the Mud Turtles; while beyond, white fish, salmon trout, bass, and ling are found in great quantities.

As a field for the geologist and mineralogist the district is interesting. For two years past, and for three to come, Dr. Adams, professor in McGill University, Montreal, with a staff has been and will be engaged in a geological survey of the district, under the auspices of the Dominion Government.

Though nearly three hundred years have elapsed since Champlain and his Huron war-party traversed these waters, yet, large and imposing as was the fleet of canoes which threaded the islet-dotted surface of Balsam or rounded Sturgeon Point, every evening in summer each of these lakes presents as enlivening a scene. If it be true that the spirits of departed Indians nightly return to their former haunts, then, indeed, must their surprise be great during the summer season in the Lake District of Victoria and Haliburton. SAM HUGHES.

is the summer home and birthplace of Mr. and Mrs. Wm. Mackenzie, and is described in another column.

VICTORIA ROAD, on the through wagon road



STURGEON LAKE, NORTH VICTORIA



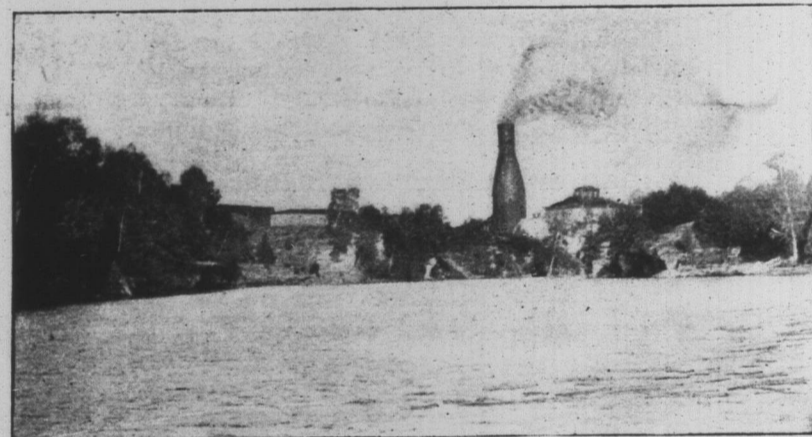
SIR CHARLES TUPPER, BART., G.C.M.G., C.B.

of that name, on the Trent Canal, near Balsam Lake, also has good hotels and summer accommodation. Grass River forms a branch of the canal to the village, and will render Victoria Road a convenient depot for tourists to the lakes.

COBOCONK, on the Gull River waters, or, as locally termed, Coboconk River, lies between the charming Balsam Lake below and the romantic Mud Turtle Lakes immediately above.

around the village are the most beautiful natural parks. From Coboconk north through the great chain of lakes is a favorite camping trip.

FENELON FALLS, lying between Cameron and Sturgeon Lake, and reached by the Haliburton Branch of the Grand Trunk, is half an hour's drive or sail from Sturgeon Point and Rosedale, between Cameron and Balsam Lakes, above. It has three fine, commodious



SAWMILLS, FENELON FALLS, NORTH VICTORIA

It is also the terminus of the Coboconk branch of the railway. No spot is more favorably adopted by nature for a summer resort. On one hand lies Balsam Lake with its white sandy shores, high bluffs, picturesque islands, deep bays, and the famous Indian Point, the property and home of J. H. Carnegie, M.P.P. On the other are the romantic waters, islands, and shores of the Mud Turtle Lakes, while

hotels and good fishing accommodation and the chief town of the riding.

NORLAND, five miles north of Coboconk, reached by a lovely drive along the shores of the Mud Turtle Lakes, is specially adapted for a summer resort. The groves, drives, walks, and quiet nooks on every hand, coupled with the rich sandy soil, render it one of the most charming, most healthy, and most cleanly spots for tourists.

Moore's Falls, or Leary's, between Moore's Lakes and Gull Lake, is beautifully situated. Already many annually make the locality a summer resort.

Minden, seven miles from Gelett on the Haliburton branch, is on the Gull River, and offers facilities for reaching Gull Lake below and the splendid chain above. It has good hotel accommodation, and from its romantic surroundings, amid high hills, rocky ridges, and precipitous ledges, offers great attractions to tourists.

Haliburton, on the head of the Burnt River waters on Big Kushog Lake, is also a convenient point for reaching surrounding lakes.

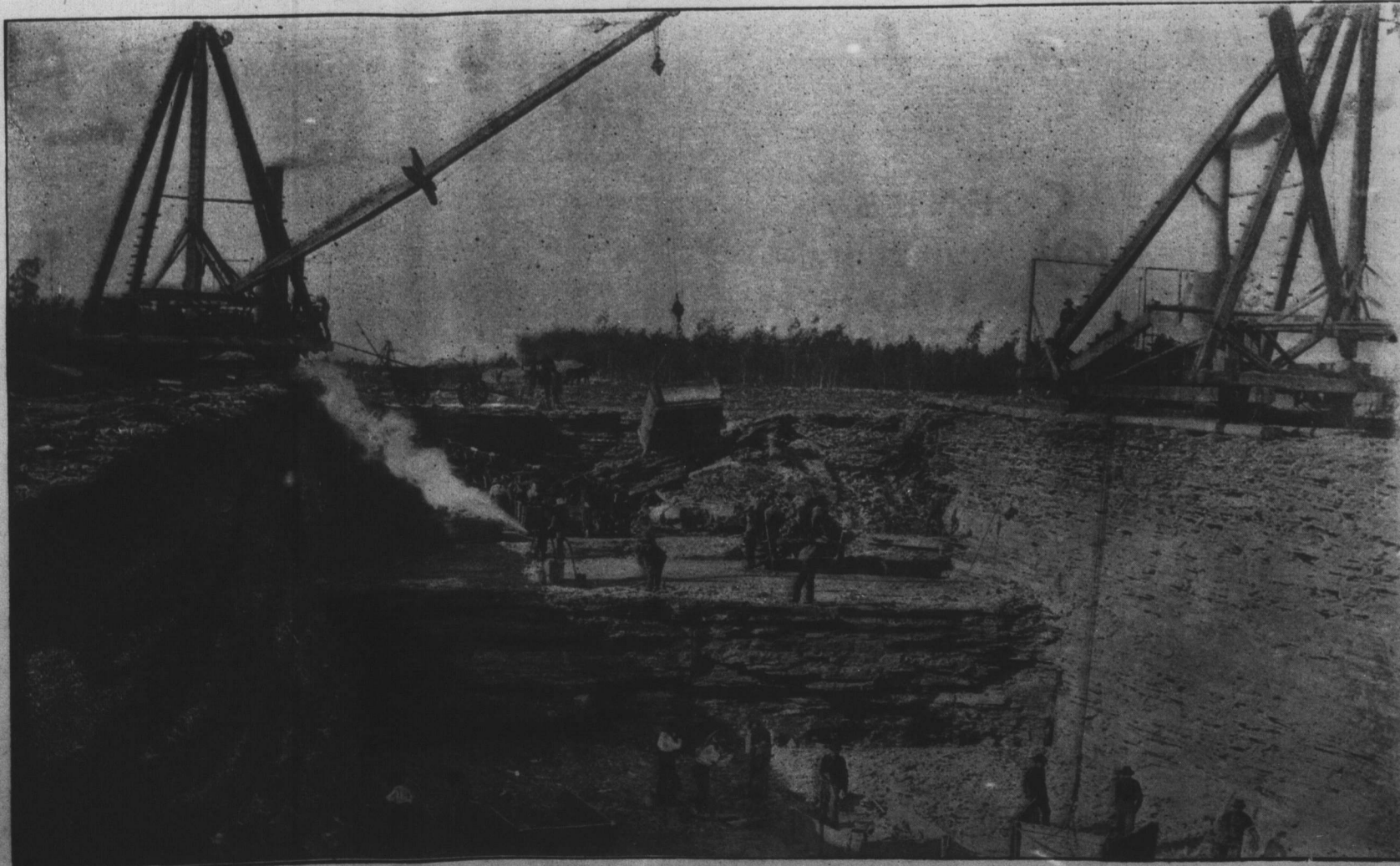
Kinmount is the junction with the Ironbridge, Bancroft, and Ottawa Railway, near which are located fine speckled trout lakes. Three good hotels adorn the village.

Dorset P.O., or Colebridge, on Trout Lake or Lake of Bays, is reached from Haliburton, or by drive from Bracebridge to Dorsetville, and thence by boat. It is also reached by boat north from Minden, and by road from the same direction. Its surroundings are most romantic.

Bobaygeon, in South Victoria, on Sturgeon Lake, is already described. It forms a most interesting summer resort, its magnificent hotels guaranteeing to tourists every comfort. In the entire chain of lakes the finest fishing is found.

DALRYMPLE Lakes, in Carden, are reached by drive from Kirkfield, and present a scene of beauty.

WASHBURN ISLAND, on Lake Scugog in South Victoria, is reached by boat from Lorneville or Port Perry, or by drive and boat from Bowmanville or Burketon.



SCENE ON HEIGHT OF LAND SECTION, TRENT CANAL, NORTH VICTORIA Station No. 2, showing Station No. 3 in the distance.

Profile of Navig... each at Coboconk... waterway

ON THE... We fellows hel... had the floo... Ned Parks wa... Charles's ce... We'd voted for... some others... When Tommy... which made... Twas in the... Tommy had... For if your m... haven't hal... The thing tha... that neither... Is the way a... dares to "o... Old Tommy s... he might sp... playing by... would not... But thought... and broke... In two just... I tell you... Grown people... If we shou... When we had... they would... They'd call it... something... A small black... heard them... But we left... went to D... And kicked... matt, ther... For we could... the dreary... When "Tommy... mind just