

Poeth.

The Panted Satchman. I'm a panted-satchman, I'm a panted-satchman...

Odds And Ends.

Taking Things Without Asking.

When I was a boy I was playing out in the street one winter day...

An old gentleman sat alone on the seat, and he looked at me rather benignly...

"Do you own a cutter young man?" "No, sir."

"Well, then why did you get in?" "Well, sir, I thought you looked good and kind, and that you would have no objection."

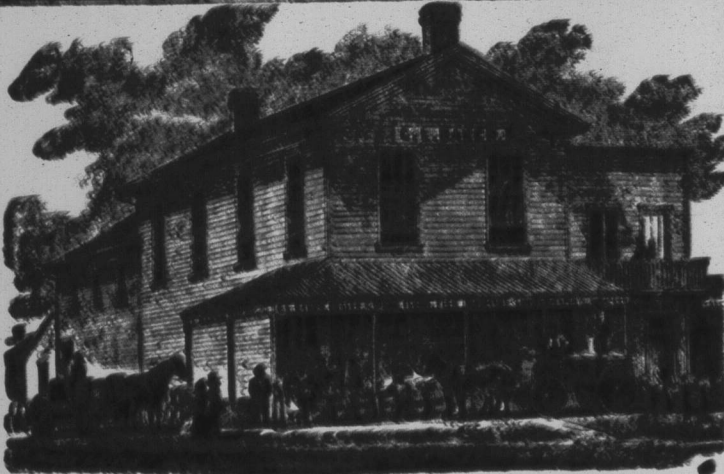
An old maid, speaking of marriage says it is like any other disease...

A long island chicken thief attempted to ply his vocation in the vicinity of a building...

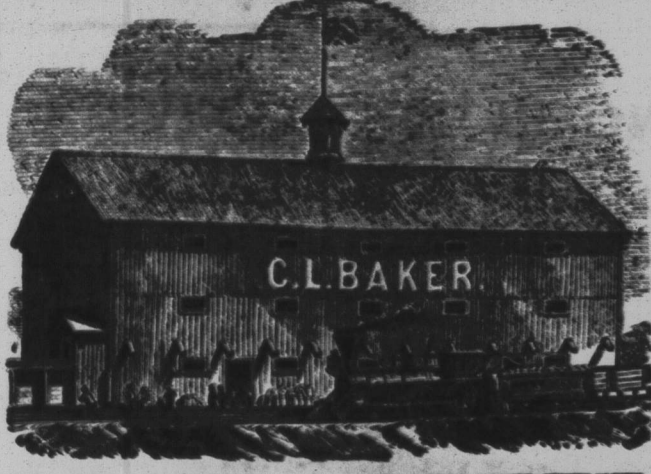
REMARKABLE AGREEMENT.—The idealism in which many people converse, reminds us of two Dutchmen...

The other, after two or three hasty puffs, replied: "Well I don't know what sort of waddler you think it will be?"

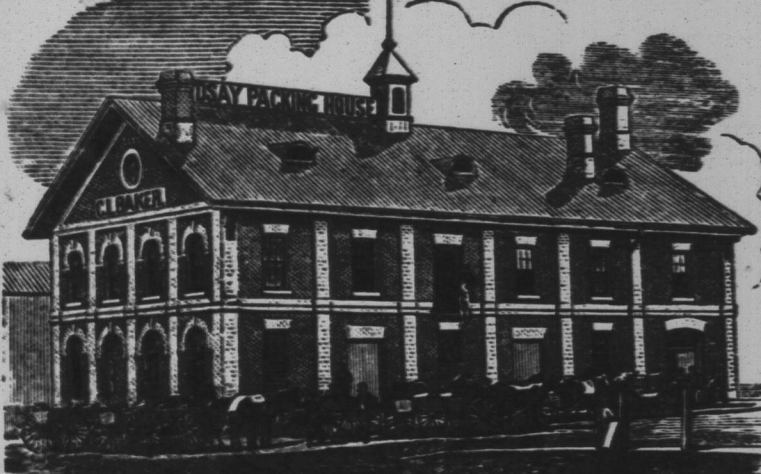
The Irish rightly or wrongly get credit for all the bulls that go round the papers...



C. L. BAKER Has just received a very large Stock of Fresh Family Groceries, Fish, &c.



GRAIN MARKET. THE Subscriber having engaged Mr. RICHARD LEARY as his permanent buyer...



MARKET FOR DRESSED HOGS. The subscriber will pay the Highest Market Price for Dressed Hogs delivered at his Packing Establishment...

Musical Instruments.



L. CAISSE, Heintzman & Co. Agents for Heintzman's Celebrated Agraffe Bar Pianos...

TAYLOR & FARLEY'S ORGANS. With all the Modern Improvements, being superior to any instrument now in use...

THE LATEST STYLES OF Gents' Spring Felt Hats.

CHIGNONS, including some New Styles. JUST RECEIVED BY RICHMOND & McCAMMON.

MARCH 1, 1871. MIDLAND RAILWAY OF CANADA. TIME TABLE.

On and after Monday, Nov. 13th, trains will run as follows:

Port Hope, depart 8:15 a.m. Port Hope, arrive 8:30 p.m.

Port Hope, depart 8:45 a.m. Port Hope, arrive 9:00 p.m.

Port Hope, depart 9:15 a.m. Port Hope, arrive 9:30 p.m.

Port Hope, depart 9:45 a.m. Port Hope, arrive 10:00 p.m.

Port Hope, depart 10:15 a.m. Port Hope, arrive 10:30 p.m.

Port Hope, depart 10:45 a.m. Port Hope, arrive 11:00 p.m.

Port Hope, depart 11:15 a.m. Port Hope, arrive 11:30 p.m.

Port Hope, depart 11:45 a.m. Port Hope, arrive 12:00 p.m.

Port Hope, depart 12:15 p.m. Port Hope, arrive 12:30 p.m.

Port Hope, depart 12:45 p.m. Port Hope, arrive 1:00 p.m.

Port Hope, depart 1:15 p.m. Port Hope, arrive 1:30 p.m.

Port Hope, depart 1:45 p.m. Port Hope, arrive 2:00 p.m.

Port Hope, depart 2:15 p.m. Port Hope, arrive 2:30 p.m.

Port Hope, depart 2:45 p.m. Port Hope, arrive 3:00 p.m.

Port Hope, depart 3:15 p.m. Port Hope, arrive 3:30 p.m.

GO TO THE TORONTO HOUSE!

S. KENNADY, Groceries, Wines and Liquors. The Very Best Brands of Liquors kept for Selection of You, Tobacco, Fruit, &c.

Call Before Elsewhere! THE HIGHEST PRICE PAID FOR FARM PRODUCE.

Lindsay, Jan. 16, 1871.



JOHN LYONS is now receiving his Fall and Winter Stock of Boots Shoes.

From various Houses in Montreal and elsewhere. When the whole stock is received, it will comprise the finest selection ever brought to Lindsay.

Manufactured on the Premises by the Best of Workmen. Under his own superintendence, is immense of itself.

ORDERS punctually attended to, and satisfaction guaranteed. Leather and Findings constantly on hand. A call is respectfully solicited.

Lindsay, April, 1871.

JOHN LYONS, William Street.

It possesses a delightful fragrance, which converts any disagreeable odor arising from decayed teeth, use of Tobacco, &c.

For sale at the Medical Hall, Lindsay.

EAST END Grocery and Provision Store.

The subscriber having received a large consignment of FIRST CLASS GROCERIES...

Suitable for Town and Country trade, begs respectfully to solicit a share of the patronage of his numerous friends in the Town of Lindsay and surrounding country at the store, CORNER OF KENT AND LINDSAY STREETS.

Adam's Brick Block, next door to Wm. Burt's Prince of Wales Saloon. GEORGE SMART Agent.

Also for the Purchase of Grain and Farm Produce. Lindsay, Dec. 20th, 1869.

Glasgow Warehouse! REMOVED TO THOSE CONVENIENT PREMISES, DOBSON & MURPHY'S BLOCK.

CORNER OF KENT AND WILLIAM STREETS. Increased Facilities for Meeting the Wants Customers!

Opening With a Splendid Selection. OF NEW AND SEASONABLE DRY GOODS!

EVERY DEPARTMENT VERY COMPLETE. CANADIAN AND IMPORTED TWEEDS. ENGLISH AND FRENCH BROADCLOTHS.

FANCY YESTINGS, GENTLEMEN'S FURNISHINGS. A FIRST CLASS CUTTER EMPLOYED!

Balance of Stock Removed from the Old Stand to be Closed Off by Reason of Cost. Staple Groceries at Close Prices. A CALL SOLICITED.

Country Merchants Deal With on Liberal Terms and at Close Prices. MALCOM MORISON.

New Fall and Winter Stock of Dry Goods!

CORCORAN & ELLIS' WHOLESALE AND RETAIL ESTABLISHMENT. THE above stock comprises the newest and latest styles and patterns in the market...

Good Heavy Grey Cotton at 81 worth 123 cents. 33 inch " 10 do 14 "

Fast colored prints 101 cents worth 14 " 4-shirtings do at 123 cents worth 171 cents

Wineys at 9 cents, worth 13 cents. Black figured Coburgs at 18 cents worth 25 cents.

do do Lustras 123 do do 20 " All Wool Canadian Tweeds at 60, worth 80 cents.

do English do 75 do \$1.00 do Scotch do 60 do do 80 " And a Complete assortment of New and Fashionable Cloths.

Suitable for Gentlemen's Every Fall Suits. All the Newest Designs of Tweeds, Cassimers, Outings, Windsor Coats, Velvet Caps, Buttons, Broadcloths, and Fancy Drapery.

Our Stock of Boots and Shoes is Larger and Cheaper than ever. We Sell Groceries at prices hard to beat for cheapness and quality, cannot be undersold by any in the trade.

As Early Call and Inspection is respectfully solicited. CORCORAN & ELLIS.

HAVE YOU BEEN TO THE "House of All Nations!" KEENAN'S NEW BLOCK, KENT ST., LINDSAY.

Where you will find the largest stock of GROCERIES, WINES AND LIQUORS. Sugars, Teas, Tobaccos &c.

Ever Imported into this Section of the Country. MONEY SAVED IS MONEY GAINED! BUY THERE AND SAVE MONEY.

Country Merchants, Hotel Keepers, and the Public in General. Will find all necessaries kept by Grocers in extraordinary large quantities and

SELLING AS LOW AS CITY PRICES! This is said in all candour. Go and see for yourselves. FRANK MUNRO, Wholesale and Retail Merchant.

JOHN ANDERSON, Manufacturer of and DEALER IN ALL KINDS OF HOUSEHOLD FURNITURE.

Ware-Rooms on William Street, Lindsay, a large and well assorted Stock of FURNITURE OF THE LATEST PATTERNS.

AND VERY BET MATERIA, all of which he is determined to sell at the Lowest Prices, that Good Furniture can be sold for.

COFFINS KEPT IN STOCK. Also a Large Stock of Silver-Plated Coffin Trimmings on hand. The Trade Supplied at Moderate Prices.

BERTRAM BROS. WOULD respectfully announce to their Friends and Customers that they are now receiving 50 TONS GLASGOW IRON.

30 DOZEN BLACK'S CELEBRATED SOLID AND GAST STEEL SPADES. 12 TONS BEST PROVED CHAIN. For Sailing Vessels.

1 CASK LOCKWOOD'S CELEBRATED CULINARY. do do FILES & HORSE RASPS. 1 CASK SCOTCH T HINGES.

1 CASE DOUBLE AND SINGLE BARREL GUNS, 1 CASE ELEY'S AMMUNITION, 2 CASKS SHELF HARDWARE.

Being Large Importers they are in a position to offer All Kinds of Heavy and half Hardware! At the Very Lowest Rates. GOLDEN ANVIL, KENT ST., LINDSAY.

FARM FOR SALE. Being Eighty Lot, 6th concession township Landon, Containing 200 Acres; 50 of which are cleared, and well cultivated...

E. McFEELY. STOVES, TINWARE, LAMPS, CHIMNEYS, COAL OIL DEPOT.

GORE DISTRICT Mutual Fire Insurance Company (Established 1836).

This Company insures against Loss or Damage by Fire on favorable terms.

MONEY, MONEY. THE Subscribers are prepared to lend, on the security of firm property, a large amount of private funds...

\$6,000 TO LOAN. The Undersigned has the above amount of Private Funds to lend on Mortgage in large or small sums not less than \$500 at eight per cent.

MONEY TO LEND AT 6 PER CENT. Payable in instalments to suit the borrower.

MONEY TO LEND AT EIGHT PER CENT. Apply to E. D. ORR.

THEOS. RUSSELL & SON. RUSSELL YONGE ST. TORONTO.

Liverpool and London and Globe INSURANCE COY.

The Largest Insurance Company in the World. AVAILABLE ASSETS \$27,000,000.

ESTABLISHED 1720. Capital—Ten Million Dollars. FIRE INSURANCES effected on all descriptions of property.

CHANCERY SALE, OF FARM PROPERTY IN EMILY!

To be sold by Public Auction, pursuant to an Order of the Court of Chancery made in a case of BRADBURN vs. HALLON, by the undersigned, Local Master of the Court, or his Clerk, on

Saturday, April 27, 1872. At Twelve o'clock noon, At the COURT HOUSE in the Town of LISBETH.

The Undivided Half of the South Half of Lot Number Sixteen, in the thirteenth concession of the Township of Emily, in the County of Victoria.

The said farm is about nine miles from Lisbeth, and contains about 200 acres. The soil is clay loam, considered good for Fall Wheat; various other crops are raised. There are two log houses, and one log barn on the land. The property will be sold subject to the whole land, to a balance of \$200 and interest thereon from 1st Nov. 1867, due to the Crown for purchase money, and also to the survey of Mrs. Catherine Hallon, widow of Patrick Hallon, deceased.

TERMS. Ten per cent down, and the balance in one month, from day of sale without interest. The other conditions are the stipulating conditions of the Court. Further particulars and conditions of sale may be had at the Master's Office, Lisbeth, and at the law offices of D. W. Dumble, Esq., Lisbeth, and of Messrs. Cameron & Dummer, Lindsay.

W. H. WELLES, Dated 25th March, 1872. 185-6

Farm for sale! In the Township of Ops.

EAST half of Lot 6 in the 7th con. of the Township of Ops, containing 90 acres, between 60 and 70 acres under cultivation. Two excellent buildings, one a fine 4-roomed farm house, eight miles from Lindsay. A good frame dwelling-house and barn, and other suitable buildings. For further particulars apply to WILLIAM BBA.

Ops, March 4, 1872. Orange Certificates FOR SALE.

At the Victoria Water Office.