

THE VISIT OF AN ANGEL.

A STORY OF CHRISTMAS EVE.

BY WILLIAM WATSON.

It is cold enough to freeze the heart out of a man and make the white hair beam for joy, crumpled Tom Orton, as he looked out of the window upon the snow-covered streets.

How I wish I could get at home to-night and take care of you and the baby, Jenny. And I would only for the thought of how much poverty was knocking about, and would not add to the hearts of those he loved by mentioning it.

Only for what, Tom? asked his wife from the bed, where, all her life, she was taking care of their two sick children.

Only that they'll be wanting more, he replied. You know it is Christ mas eve, and we've got up an extra entertainment.

You! Tom, and a sorry day for you, now that I am sick and the children are wanting medicine and the wood has all been used, but she could not bear to add a father's weight to his load and so much dependence upon you.

I know, he replied, hastily brushing away the moisture from his eyes and trying to conceal his anxiety, that I am well and strong, Jenny, and the winter is nearly over and you'll all be well again.

But if anything should happen to you? he questioned, with a heavy sigh.

Don't think there is much danger, he said, representing a sobe which thought of how separate would be their situation.

Don't fear, I'll take care of my self, won't you any extra risk, and if I have anything to do in the latter part, will be home early.

He stepped to the bedside, drew the covers more closely about his wife and children, kissed them, put on his hat, and then, though some time was at a distance from a shelter in his own situation, attended to every thing possible for their comfort, and prepared to face the cold and go to his night's abode.

He looked at the clock, glanced anxiously at the clock.

It is ten, you were off, Tom? questioned his wife. You know I can't put a walk.

Yes, Jenny, but how could I, had I had my leaving you alone?

Oh, I am used to starting alone, I have done so many times, and you'll see I will be home early.

You see, when you were off, and a skilled performer. He had been lectured to his professional duties, but had been so busy with his own affairs, that he had not had time to attend to his own duties.

He passed along the narrow street, though more pretentious ones, passed the house of an millionaire, and entered the street that led to his own home, and he felt that life or property, or both, were being whittled on to destruction.

Are you well? he asked, as they lay in places of safety, and he continued standing upon the curb-stone.

He gave no heed to the warning. He had heard death lie in wait, and shrink from it in any event, and not excited when at such a distance. He was now in need of the street upon a team of noble horses that were ready along with him, and he felt that he could not have troubled himself by getting out of bed, and he felt that he could not have troubled himself by getting out of bed.

Very loudly was the noble horse followed to him by the noble horse, and the scene, when he was laid upon the bed at the side with his sick wife and children, covered every eye to overflow with tears.

Tom, dear Tom, said Jenny, as well as she could for her pitiful sobs, what will become of us, the children, what will become of us, the children, what will become of us, the children.

Not while we have hands, replied his associates, and every heart was touched and every arm was needed to do the utmost toward relief.

They all looked around anxiously for the physician, but supposed he had accompanied them. But he was not to be seen, and their grumbling became loud and deep.

I can't see anything, said Tom, but for you, Jenny, and the children, and he entirely broke down.

And I could cure that doctor for an overflowing vessel, he cried, on one of the medicine. But it is over this. We give our lives freely to please the public, and when anything threatens they care nothing for us.

Tom Orton, groined heavily, The wind broke his life, and he fell up in bed, strained his eyes, clamped her hands and shouted in terrible shrieks and wailing.

Send for a doctor, said an angry voice, but he would not stir. Tom Orton had raised his life to save that of the daughter of Dr. Armitage, and his grandniece, and the scene of chance had given them the knowledge of the fact.

My dear! exclaimed a man, who, looked that the very opening forehead, and would have drawn him into his arms, and he would have drawn him into his arms, and he would have drawn him into his arms.

Tom Orton stood without of joy.

TREASURER'S SALE OF LANDS.

Notice is hereby given that the Treasurer of the County of Victoria, in pursuance of the provisions of the Public Lands Act, 1874, has caused to be sold the following parcels of land.

Table with columns: Lot, Area, and Price. Lists various land parcels for sale, including lots in the City of Melbourne and other areas.

JAMES H. KNOWLSON, Town Treasurer.

First published in Victoria Witness of 14th Nov. 1878.

TREASURER'S SALE OF LANDS.

Notice is hereby given that the Treasurer of the County of Victoria, in pursuance of the provisions of the Public Lands Act, 1874, has caused to be sold the following parcels of land.

Table with columns: Lot, Area, and Price. Lists various land parcels for sale, including lots in the City of Melbourne and other areas.

JAMES H. KNOWLSON, Town Treasurer.

First published in Victoria Witness of 14th Nov. 1878.

TREASURER'S SALE OF LANDS.

Notice is hereby given that the Treasurer of the County of Victoria, in pursuance of the provisions of the Public Lands Act, 1874, has caused to be sold the following parcels of land.

Table with columns: Lot, Area, and Price. Lists various land parcels for sale, including lots in the City of Melbourne and other areas.

JAMES H. KNOWLSON, Town Treasurer.

First published in Victoria Witness of 14th Nov. 1878.

TREASURER'S SALE OF LANDS.

Notice is hereby given that the Treasurer of the County of Victoria, in pursuance of the provisions of the Public Lands Act, 1874, has caused to be sold the following parcels of land.

Table with columns: Lot, Area, and Price. Lists various land parcels for sale, including lots in the City of Melbourne and other areas.

JAMES H. KNOWLSON, Town Treasurer.

First published in Victoria Witness of 14th Nov. 1878.

TREASURER'S SALE OF LANDS.

Notice is hereby given that the Treasurer of the County of Victoria, in pursuance of the provisions of the Public Lands Act, 1874, has caused to be sold the following parcels of land.

Table with columns: Lot, Area, and Price. Lists various land parcels for sale, including lots in the City of Melbourne and other areas.

JAMES H. KNOWLSON, Town Treasurer.

First published in Victoria Witness of 14th Nov. 1878.

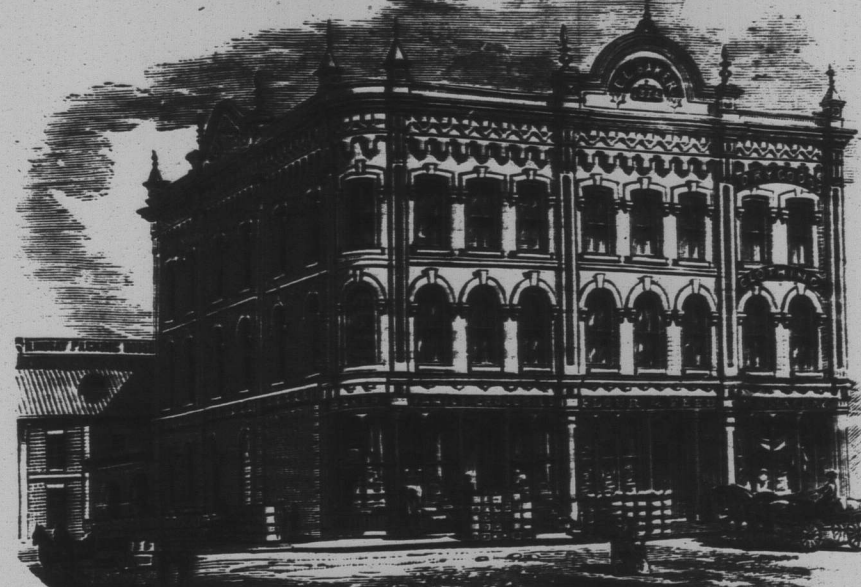
TREASURER'S SALE OF LANDS.

Notice is hereby given that the Treasurer of the County of Victoria, in pursuance of the provisions of the Public Lands Act, 1874, has caused to be sold the following parcels of land.

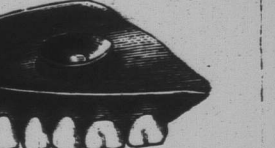
Table with columns: Lot, Area, and Price. Lists various land parcels for sale, including lots in the City of Melbourne and other areas.

JAMES H. KNOWLSON, Town Treasurer.

First published in Victoria Witness of 14th Nov. 1878.



CHARLES L. BAKER, WHOLESALE & RETAIL GROCER. PROPRIETOR OF THE LINDSAY PACKING HOUSE, AND PRODUCE DEALER. Corner of Kent and Cambridge Streets, Lindsay.



THE PEOPLE'S DENTAL INSTRUCTOR. A book showing how the teeth may be preserved to old age. This little book is a treatise on the teeth, natural and artificial, written by J. Neelands, L.D.S., Sent to any address for 15 cents.

CHEAP PRINTING.

JOB WORK of every description executed at reasonable rates at THE VICTORIA WAREHOUSE STEAM PRINTING HOUSE, Kent Street, Lindsay.

DENTIST.

Rooms over Mr. J. Kennedy's store, Kent Street.

DRUGS AND DYE STUFFS.

EVERY OTHER SHADE OF COLOR THAT MAY BE REQUIRED. BOTH IN BULK AND PACKAGE DYES, AT PERRIN'S DRUG STORE, Next Door to the Benson House, Lindsay.

Woolen Mills.

Encourage Home Manufactures. Full Cloths, Tweeds, Flannels, Blankets, Horse Blankets, Yarn, and Stocking Yarn. Made to Order.

QUERY.

Men pay their debts, 25 cents per dollar. They go back into business how many recover? You require a good suit of clothes. You want Hat, Cap, Shirt, Tie or Hose. You wish your Boys all Cheaply Clothed. You reverse the query, they try to buy the query, it's true what the Post says, honesty is best. Possible bring all men to rest. You want Tea, Sugar, Raisins or Rice. You call upon me I will suit you in price. Anything else in the Grocery Line. I cannot suit you the fault won't be mine. Price is an object in Dry Goods I am sure. Ten per cent. off is anything fair. More is required, I'll forgive you my share.

Carding.

Fulling, Drying and Cloth-dressing. A LARGE STOCK of fine and coarse TWEEDS, OVERCOATINGS, AND FLANNELS on hand to be sold AT FACTORY PRICES. Cash for Wool, hides and Sheepskins the year round.

STEPHENSON & THOMPSON.

Have in stock a large variety of STOVES AND TINKWARE of every description. Sole manufacturers of the CELEBRATED STEPHENSON PATENT FURNACE. For dwellings and public buildings—the best and cheapest in use.

T. HICKEY.

Plain and Fancy Biscuits and Confectionery. BREAD, CAKES, PASTRY, BISCUITS, CONFECTIONERY, and WEDDING CAKES.

REMOVAL.

A. W. HETTGER, HAMILTON'S BLOCK, LINDSAY, ONT., DEALER IN JEWELRY. JEWELRY REPAIRED. Fancy Goods and Toys, Berlin Wool, White Wear and Trimmings. STAMPING DONE TO ORDER.

BOOKER'S ANGINA SALVE.

The Best Salve in the world for Cuts, Bruises, Swellings, Salt Rheum, Tetter, Chapped Hands, Chilblains, Corns, and all kinds of Skin Eruptions. This Salve is guaranteed to give perfect satisfaction in every case of money refunded. Price 25 cents per box. For sale by S. Parvin, Lindsay—1199-20.

A WONDERFUL DISCOVERY.

For the speedy cure of Consumption and all diseases that lead to it, such as Asthma, Coughs, neglected Colds, Bronchitis, Hay Fever, Asthma, pain in the side and chest, dry hacking cough, tickling in the throat, Hoarseness, Sore Throat, and all chronic or lingering diseases of the throat and lungs. Dr. Kew's New Discovery has no equal and has established for itself a world wide reputation. Many leading physicians recommend and use it in their practice. The formula from which it is prepared is highly recommended by all medical journals. The clergy and the press have complimented it in the most glowing terms. Do not try any other and get a trial bottle sent you or cover of a regular size for \$1.00. For sale by S. Parvin, Lindsay.

LOCAL DIRECTORY.

St. James' R.C. Cathedral, Rev. W. T. Smith, D. D., 11 a.m. and 7 p.m. St. Mary's R.C. Cathedral, Rev. W. T. Smith, D. D., 11 a.m. and 7 p.m. St. Andrew's R.C. Cathedral, Rev. W. T. Smith, D. D., 11 a.m. and 7 p.m. St. George's R.C. Cathedral, Rev. W. T. Smith, D. D., 11 a.m. and 7 p.m. St. John's R.C. Cathedral, Rev. W. T. Smith, D. D., 11 a.m. and 7 p.m. St. Peter's R.C. Cathedral, Rev. W. T. Smith, D. D., 11 a.m. and 7 p.m. St. Paul's R.C. Cathedral, Rev. W. T. Smith, D. D., 11 a.m. and 7 p.m. St. Stephen's R.C. Cathedral, Rev. W. T. Smith, D. D., 11 a.m. and 7 p.m. St. Thomas's R.C. Cathedral, Rev. W. T. Smith, D. D., 11 a.m. and 7 p.m. St. Vincent's R.C. Cathedral, Rev. W. T. Smith, D. D., 11 a.m. and 7 p.m. St. Elizabeth's R.C. Cathedral, Rev. W. T. Smith, D. D., 11 a.m. and 7 p.m. St. Ann's R.C. Cathedral, Rev. W. T. Smith, D. D., 11 a.m. and 7 p.m. St. Agnes's R.C. Cathedral, Rev. W. T. Smith, D. D., 11 a.m. and 7 p.m. St. Margaret's R.C. Cathedral, Rev. W. T. Smith, D. D., 11 a.m. and 7 p.m. St. Clare's R.C. Cathedral, Rev. W. T. Smith, D. D., 11 a.m. and 7 p.m. St. Francis's R.C. Cathedral, Rev. W. T. Smith, D. D., 11 a.m. and 7 p.m. St. Rose's R.C. Cathedral, Rev. W. T. Smith, D. D., 11 a.m. and 7 p.m. St. Gertrude's R.C. Cathedral, Rev. W. T. Smith, D. D., 11 a.m. and 7 p.m. St. Eudocia's R.C. Cathedral, Rev. W. T. Smith, D. D., 11 a.m. and 7 p.m. St. Cecilia's R.C. Cathedral, Rev. W. T. Smith, D. D., 11 a.m. and 7 p.m. St. Dymphna's R.C. Cathedral, Rev. W. T. Smith, D. D., 11 a.m. and 7 p.m. St. Agatha's R.C. Cathedral, Rev. W. T. Smith, D. D., 11 a.m. and 7 p.m. St. Lucy's R.C. Cathedral, Rev. W. T. Smith, D. D., 11 a.m. and 7 p.m. St. Therasia's R.C. Cathedral, Rev. W. T. Smith, D. D., 11 a.m. and 7 p.m. St. Katerina's R.C. Cathedral, Rev. W. T. Smith, D. D., 11 a.m. and 7 p.m. St. Brigid's R.C. Cathedral, Rev. W. T. Smith, D. D., 11 a.m. and 7 p.m. St. Genevieve's R.C. Cathedral, Rev. W. T. Smith, D. D., 11 a.m. and 7 p.m. St. Margareta's R.C. Cathedral, Rev. W. T. Smith, D. D., 11 a.m. and 7 p.m. St. Cecilia's R.C. Cathedral, Rev. W. T. Smith, D. D., 11 a.m. and 7 p.m. St. Dymphna's R.C. Cathedral, Rev. W. T. Smith, D. D., 11 a.m. and 7 p.m. St. Agatha's R.C. Cathedral, Rev. W. T. Smith, D. D., 11 a.m. and 7 p.m. St. Lucy's R.C. Cathedral, Rev. W. T. Smith, D. D., 11 a.m. and 7 p.m. St. Therasia's R.C. Cathedral, Rev. W. T. Smith, D. D., 11 a.m. and 7 p.m. St. Katerina's R.C. Cathedral, Rev. W. T. Smith, D. D., 11 a.m. and 7 p.m. St. Brigid's R.C. Cathedral, Rev. W. T. Smith, D. D., 11 a.m. and 7 p.m. St. Genevieve's R.C. Cathedral, Rev. W. T. Smith, D. D., 11 a.m. and 7 p.m. St. Margareta's R.C. Cathedral, Rev. W. T. Smith, D. D., 11 a.m. and 7 p.m. St. Cecilia's R.C. Cathedral, Rev. W. T. Smith, D. D., 11 a.m. and 7 p.m. St. Dymphna's R.C. Cathedral, Rev. W. T. Smith, D. D., 11 a.m. and 7 p.m. St. Agatha's R.C. Cathedral, Rev. W. T. Smith, D. D., 11 a.m. and 7 p.m. St. Lucy's R.C. Cathedral, Rev. W. T. Smith, D. D., 11 a.m. and 7 p.m. St. Therasia's R.C. Cathedral, Rev. W. T. Smith, D. D., 11 a.m. and 7 p.m. St. Katerina's R.C. Cathedral, Rev. W. T. Smith, D. D., 11 a.m. and 7 p.m. St. Brigid's R.C. Cathedral, Rev. W. T. Smith, D. D., 11 a.m. and 7 p.m. St. Genevieve's R.C. Cathedral, Rev. W. T. Smith, D. D., 11 a.m. and 7 p.m. St. Margareta's R.C. Cathedral, Rev. W. T. Smith, D. D., 11 a.m. and 7 p.m. St. Cecilia's R.C. Cathedral, Rev. W. T. Smith, D. D., 11 a.m. and 7 p.m. St. Dymphna's R.C. Cathedral, Rev. W. T. Smith, D. D., 11 a.m. and 7 p.m. St. Agatha's R.C. Cathedral, Rev. W. T. Smith, D. D., 11 a.m. and 7 p.m. St. Lucy's R.C. Cathedral, Rev. W. T. Smith, D. D., 11 a.m. and 7 p.m. St. Therasia's R.C. Cathedral, Rev. W. T. Smith, D. D., 11 a.m. and 7 p.m. St. Katerina's R.C. Cathedral, Rev. W. T. Smith, D. D., 11 a.m. and 7 p.m. St. Brigid's R.C. Cathedral, Rev. W. T. Smith, D. D., 11 a.m. and 7 p.m. St. Genevieve's R.C. Cathedral, Rev. W. T. Smith, D. D., 11 a.m. and 7 p.m. St. Margareta's R.C. Cathedral, Rev. W. T. Smith, D. D., 11 a.m. and 7 p.m. St. Cecilia's R.C. Cathedral, Rev. W. T. Smith, D. D., 11 a.m. and 7 p.m. St. Dymphna's R.C. Cathedral, Rev. W. T. Smith, D. D., 11 a.m. and 7 p.m. St. Agatha's R.C. Cathedral, Rev. W. T. Smith, D. D., 11 a.m. and 7 p.m. St. Lucy's R.C. Cathedral, Rev. W. T. Smith, D. D., 11 a.m. and 7 p.m. St. Therasia's R.C. Cathedral, Rev. W. T. Smith, D. D., 11 a.m. and 7 p.m. St. Katerina's R.C. Cathedral, Rev. W. T. Smith, D. D., 11 a.m. and 7 p.m. St. Brigid's R.C. Cathedral, Rev. W. T. Smith, D. D., 11 a.m. and 7 p.m. St. Genevieve's R.C. Cathedral, Rev. W. T. Smith, D. D., 11 a.m. and 7 p.m. St. Margareta's R.C. Cathedral, Rev. W. T. Smith, D. D., 11 a.m. and 7 p.m. St. Cecilia's R.C. Cathedral, Rev. W. T. Smith, D. D., 11 a.m. and 7 p.m. St. Dymphna's R.C. Cathedral, Rev. W. T. Smith, D. D., 11 a.m. and 7 p.m. St. Agatha's R.C. Cathedral, Rev. W. T. Smith, D. D., 11 a.m. and 7 p.m. St. Lucy's R.C. Cathedral, Rev. W. T. Smith, D. D., 11 a.m. and 7 p.m. St. Therasia's R.C. Cathedral, Rev. W. T. Smith, D. D., 11 a.m. and 7 p.m. St. Katerina's R.C. Cathedral, Rev. W. T. Smith, D. D., 11 a.m. and 7 p.m. St. Brigid's R.C. Cathedral, Rev. W. T. Smith, D. D., 11 a.m. and 7 p.m. St. Genevieve's R.C. Cathedral, Rev. W. T. Smith, D. D., 11 a.m. and 7 p.m. St. Margareta's R.C. Cathedral, Rev. W. T. Smith, D. D., 11 a.m. and 7 p.m. St. Cecilia's R.C. Cathedral, Rev. W. T. Smith, D. D., 11 a.m. and 7 p.m. St. Dymphna's R.C. Cathedral, Rev. W. T. Smith, D. D., 11 a.m. and 7 p.m. St. Agatha's R.C. Cathedral, Rev. W. T. Smith, D. D., 11 a.m. and 7 p.m. St. Lucy's R.C. Cathedral, Rev. W. T. Smith, D. D., 11 a.m. and 7 p.m. St. Therasia's R.C. Cathedral, Rev. W. T. Smith, D. D., 11 a.m. and 7 p.m. St. Katerina's R.C. Cathedral, Rev. W. T. Smith, D. D., 11 a.m. and 7 p.m. St. Brigid's R.C. Cathedral, Rev. W. T. Smith, D. D., 11 a.m. and 7 p.m. St. Genevieve's R.C. Cathedral, Rev. W. T. Smith, D. D., 11 a.m. and 7 p.m. St. Margareta's R.C. Cathedral, Rev. W. T. Smith, D. D., 11 a.m. and 7 p.m. St. Cecilia's R.C. Cathedral, Rev. W. T. Smith, D. D., 11 a.m. and 7 p.m. St. Dymphna's R.C. Cathedral, Rev. W. T. Smith, D. D., 11 a.m. and 7 p.m. St. Agatha's R.C. Cathedral, Rev. W. T. Smith, D. D., 11 a.m. and 7 p.m. St. Lucy's R.C. Cathedral, Rev. W. T. Smith, D. D., 11 a.m. and 7 p.m. St. Therasia's R.C. Cathedral, Rev. W. T. Smith, D. D., 11 a.m. and 7 p.m. St. Katerina's R.C. Cathedral, Rev. W. T. Smith, D. D., 11 a.m. and 7 p.m. St. Brigid's R.C. Cathedral, Rev. W. T. Smith, D. D., 11 a.m. and 7 p.m. St. Genevieve's R.C. Cathedral, Rev. W. T. Smith, D. D., 11 a.m. and 7 p.m. St. Margareta's R.C. Cathedral, Rev. W. T. Smith, D. D., 11 a.m. and 7 p.m. St. Cecilia's R.C. Cathedral, Rev. W. T. Smith, D. D., 11 a.m. and 7 p.m. St. Dymphna's R.C. Cathedral, Rev. W. T. Smith, D. D., 11 a.m. and 7 p.m. St. Agatha's R.C. Cathedral, Rev. W. T. Smith, D. D., 11 a.m. and 7 p.m. St. Lucy's R.C. Cathedral, Rev. W. T. Smith, D. D., 11 a.m. and 7 p.m. St. Therasia's R.C. Cathedral, Rev. W. T. Smith, D. D., 11 a.m. and 7 p.m. St. Katerina's R.C. Cathedral, Rev. W. T. Smith, D. D., 11 a.m. and 7 p.m. St. Brigid's R.C. Cathedral, Rev. W. T. Smith, D. D., 11 a.m. and 7 p.m. St. Genevieve's R.C. Cathedral, Rev. W. T. Smith, D. D., 11 a.m. and 7 p.m. St. Margareta's R.C. Cathedral, Rev. W. T. Smith, D. D., 11 a.m. and 7 p.m. St. Cecilia's R.C. Cathedral, Rev. W. T. Smith, D. D., 11 a.m. and 7 p.m. St. Dymphna's R.C. Cathedral, Rev. W. T. Smith, D. D., 11 a.m. and 7 p.m. St. Agatha's R.C. Cathedral, Rev. W. T. Smith, D. D., 11 a.m. and 7 p.m. St. Lucy's R.C. Cathedral, Rev. W. T. Smith, D. D., 11 a.m. and 7 p.m. St. Therasia's R.C. Cathedral, Rev. W. T. Smith, D. D., 11 a.m. and 7 p.m. St. Katerina's R.C. Cathedral, Rev. W. T. Smith, D. D., 11 a.m. and 7 p.m. St. Brigid's R.C. Cathedral, Rev. W. T. Smith, D. D., 11 a.m. and 7 p.m. St. Genevieve's R.C. Cathedral, Rev. W. T. Smith, D. D., 11 a.m. and 7 p.m. St. Margareta's R.C. Cathedral, Rev. W. T. Smith, D. D., 11 a.m. and 7 p.m. St. Cecilia's R.C. Cathedral, Rev. W. T. Smith, D. D., 11 a.m. and 7 p.m. St. Dymphna's R.C. Cathedral, Rev. W. T. Smith, D. D., 11 a.m. and 7 p.m. St. Agatha's R.C. Cathedral, Rev. W. T. Smith, D. D., 11 a.m. and 7 p.m. St. Lucy's R.C. Cathedral, Rev. W. T. Smith, D. D., 11 a.m. and 7 p.m. St. Therasia's R.C. Cathedral, Rev. W. T. Smith, D. D., 11 a.m. and 7 p.m. St. Katerina's R.C. Cathedral, Rev. W. T. Smith, D. D., 11 a.m. and 7 p.m. St. Brigid's R.C. Cathedral, Rev. W. T. Smith, D. D., 11 a.m. and 7 p.m. St. Genevieve's R.C. Cathedral, Rev. W. T. Smith, D. D., 11 a.m. and 7 p.m. St. Margareta's R.C. Cathedral, Rev. W. T. Smith, D. D., 11 a.m. and 7 p.m. St. Cecilia's R.C. Cathedral, Rev. W. T. Smith, D. D., 11 a.m. and 7 p.m. St. Dymphna's R.C. Cathedral, Rev. W. T. Smith, D. D., 11 a.m. and 7 p.m. St. Agatha's R.C. Cathedral, Rev. W. T. Smith, D. D., 11 a.m. and 7 p.m. St. Lucy's R.C. Cathedral, Rev. W. T. Smith, D. D., 11 a.m. and 7 p.m. St. Therasia's R.C. Cathedral, Rev. W. T. Smith, D. D., 11 a.m. and 7 p.m. St. Katerina's R.C. Cathedral, Rev. W. T. Smith, D. D., 11 a.m. and 7 p.m. St. Brigid's R.C. Cathedral, Rev. W. T. Smith, D. D., 11 a.m. and 7 p.m. St. Genevieve's R.C. Cathedral, Rev. W. T. Smith, D. D., 11 a.m. and 7 p.m. St. Margareta's R.C. Cathedral, Rev. W. T. Smith, D. D., 11 a.m. and 7 p.m. St. Cecilia's R.C. Cathedral, Rev. W. T. Smith, D. D., 11 a.m. and 7 p.m. St. Dymphna's R.C. Cathedral, Rev. W. T. Smith, D. D., 11 a.m. and 7 p.m. St. Agatha's R.C. Cathedral, Rev. W. T. Smith, D. D., 11 a.m. and 7 p.m. St. Lucy's R.C. Cathedral, Rev. W. T. Smith, D. D., 11 a.m. and 7 p.m. St. Therasia's R.C. Cathedral, Rev. W. T. Smith, D. D., 11 a.m. and 7 p.m. St. Katerina's R.C. Cathedral, Rev. W. T. Smith, D. D., 11 a.m. and 7 p.m. St. Brigid's R.C. Cathedral, Rev. W. T. Smith, D. D., 11 a.m. and 7 p.m. St. Genevieve's R.C. Cathedral, Rev. W. T. Smith, D. D., 11 a.m. and 7 p.m. St. Margareta's R.C. Cathedral, Rev. W. T. Smith, D. D., 11 a.m. and 7 p.m. St. Cecilia's R.C. Cathedral, Rev. W. T. Smith, D. D., 11 a.m. and 7 p.m. St. Dymphna's R.C. Cathedral, Rev. W. T. Smith, D. D., 11 a.m. and 7 p.m. St. Agatha's R.C. Cathedral, Rev. W. T. Smith, D. D., 11 a.m. and 7 p.m. St. Lucy's R.C. Cathedral, Rev. W. T. Smith, D. D., 11 a.m. and 7 p.m. St. Therasia's R.C. Cathedral, Rev. W. T. Smith, D. D., 11 a.m. and 7 p.m. St. Katerina's R.C. Cathedral, Rev. W. T. Smith, D. D., 11 a.m. and 7 p.m. St. Brigid's R.C. Cathedral, Rev. W. T. Smith, D. D., 11 a.m. and 7 p.m. St. Genevieve's R.C. Cathedral, Rev. W. T. Smith, D. D., 11 a.m. and 7 p.m. St. Margareta's R.C. Cathedral, Rev. W. T. Smith, D. D., 11 a.m. and 7 p.m. St. Cecilia's R.C. Cathedral, Rev. W. T. Smith, D. D., 11 a.m. and 7 p.m. St. Dymphna's R.C. Cathedral, Rev. W. T. Smith, D. D., 11 a.m. and 7 p.m. St. Agatha's R.C. Cathedral, Rev. W. T. Smith, D. D., 11 a.m. and 7 p.m. St. Lucy's R.C. Cathedral, Rev. W. T. Smith, D. D., 11 a.m. and 7 p.m. St. Therasia's R.C. Cathedral, Rev. W. T. Smith, D. D., 11 a.m. and 7 p.m. St. Katerina's R.C. Cathedral, Rev. W. T. Smith, D. D., 11 a.m. and 7 p.m. St. Brigid's R.C. Cathedral, Rev. W. T. Smith, D. D., 11 a.m. and 7 p.m. St. Genevieve's R.C. Cathedral, Rev. W. T. Smith, D. D., 11 a.m. and 7 p.m. St. Margareta's R.C. Cathedral, Rev. W. T. Smith, D. D., 11 a.m. and 7 p.m. St. Cecilia's R.C. Cathedral, Rev. W. T. Smith, D. D., 11 a.m. and 7 p.m. St. Dymphna's R.C. Cathedral, Rev. W. T. Smith, D. D., 11 a.m. and 7 p.m. St. Agatha's R.C. Cathedral, Rev. W. T. Smith, D. D., 11 a.m. and 7 p.m. St. Lucy's R.C. Cathedral, Rev. W. T. Smith, D. D., 11 a.m. and 7 p.m. St. Therasia's R.C. Cathedral, Rev. W. T. Smith, D. D., 11 a.m. and 7 p.m. St. Katerina's R.C. Cathedral, Rev. W. T. Smith, D. D., 11 a.m. and 7 p.m. St. Brigid's R.C. Cathedral, Rev. W. T. Smith, D. D., 11 a.m. and 7 p.m. St. Genevieve's R.C. Cathedral, Rev. W. T. Smith, D. D., 11 a.m. and 7 p.m. St. Margareta's R.C. Cathedral, Rev. W. T. Smith, D. D., 11 a.m. and 7 p.m. St. Cecilia's R.C. Cathedral, Rev. W. T. Smith, D. D., 11 a.m. and 7 p.m. St. Dymphna's R.C. Cathedral, Rev. W. T. Smith, D. D., 11 a.m. and 7 p.m. St. Agatha's R.C. Cathedral, Rev. W. T. Smith, D. D., 11 a.m. and 7 p.m. St. Lucy's R.C. Cathedral, Rev. W. T. Smith, D. D., 11 a.m. and 7 p.m. St. Therasia's R.C. Cathedral, Rev. W. T. Smith, D. D., 11 a.m. and 7 p.m. St. Katerina's R.C. Cathedral, Rev. W. T. Smith, D. D., 11 a.m. and 7 p.m. St. Brigid's R.C. Cathedral, Rev. W. T. Smith, D. D., 11 a.m. and 7 p.m. St. Genevieve's R.C. Cathedral, Rev. W. T. Smith, D. D., 11 a.m. and 7 p.m. St. Margareta's R.C. Cathedral, Rev. W. T. Smith, D. D., 11 a.m. and 7 p.m. St. Cecilia's R.C. Cathedral, Rev. W. T. Smith, D. D., 11 a.m. and 7 p.m. St. Dymphna's R.C. Cathedral, Rev. W. T. Smith, D. D., 11 a.m. and 7 p.m. St. Agatha's R.C. Cathedral, Rev. W. T. Smith, D. D., 11 a.m. and 7 p.m. St. Lucy's R.C. Cathedral, Rev. W. T. Smith, D. D., 11 a.m. and 7 p.m. St. Therasia's R.C. Cathedral, Rev. W. T. Smith, D. D., 11 a.m. and 7 p.m. St. Katerina's R.C. Cathedral, Rev. W. T. Smith, D. D., 11 a.m. and 7 p.m. St. Brigid's R.C. Cathedral, Rev. W. T. Smith, D. D., 11 a.m. and 7 p.m. St. Genevieve's R.C. Cathedral, Rev. W. T. Smith, D. D., 11 a.m. and 7 p.m. St. Margareta's R.C. Cathedral, Rev. W. T. Smith, D. D., 11 a.m. and 7 p.m. St. Cecilia's R.C. Cathedral, Rev. W. T. Smith, D. D., 11 a.m. and 7 p.m. St. Dymphna's R.C. Cathedral, Rev. W. T. Smith, D. D., 11 a.m. and 7 p.m. St. Agatha's R.C. Cathedral, Rev. W. T. Smith, D. D., 11 a.m. and 7 p.m. St. Lucy's R.C. Cathedral, Rev. W. T. Smith, D. D., 11 a.m. and 7 p.m. St. Therasia's R.C. Cathedral, Rev. W. T. Smith, D. D., 11 a.m. and 7 p.m. St. Katerina's R.C. Cathedral, Rev. W. T. Smith, D. D., 11 a.m. and 7 p.m. St. Brigid's R.C. Cathedral, Rev. W. T. Smith, D. D., 11 a.m. and 7 p.m. St. Genevieve's R.C. Cathedral, Rev. W. T. Smith, D. D., 11 a.m. and 7 p.m. St. Margareta's R.C. Cathedral, Rev. W. T. Smith, D. D., 11 a.m. and 7 p.m. St. Cecilia's R.C. Cathedral, Rev. W. T. Smith, D. D., 11 a.m. and 7 p.m. St. Dymphna's R.C. Cathedral, Rev. W. T. Smith, D. D., 11 a.m. and 7 p.m. St. Agatha's R.C. Cathedral, Rev. W. T. Smith, D. D., 11 a.m. and 7 p.m. St. Lucy's R.C. Cathedral, Rev. W. T. Smith, D. D., 11 a.m. and 7 p.m. St. Therasia's R.C. Cathedral, Rev. W. T. Smith, D. D., 11 a.m. and 7 p.m. St. Katerina's R.C. Cathedral, Rev. W. T. Smith, D. D., 11 a.m. and 7 p.m. St. Brigid's R.C. Cathedral, Rev. W. T. Smith, D. D., 11 a.m. and 7 p.m. St. Genevieve's R.C. Cathedral, Rev. W. T. Smith, D. D., 11 a.m. and 7 p.m. St. Margareta's R.C. Cathedral, Rev. W. T. Smith, D. D., 11 a.m. and 7 p.m. St. Cecilia's R.C. Cathedral, Rev. W.