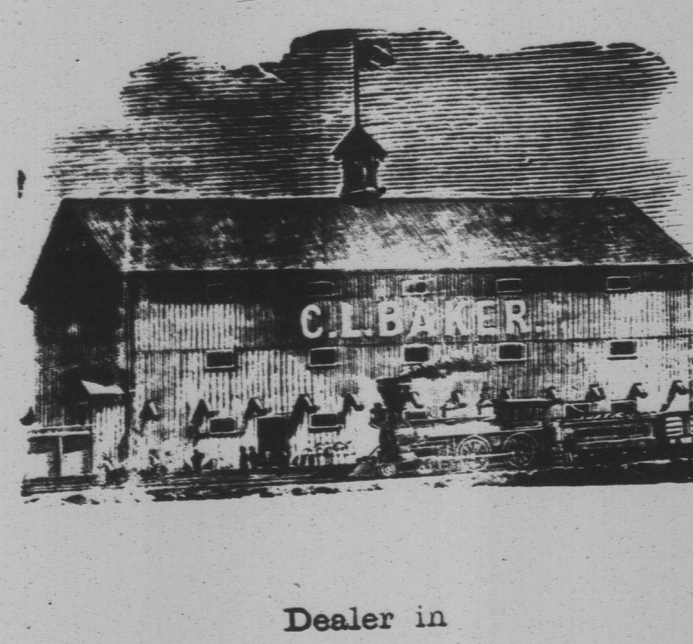
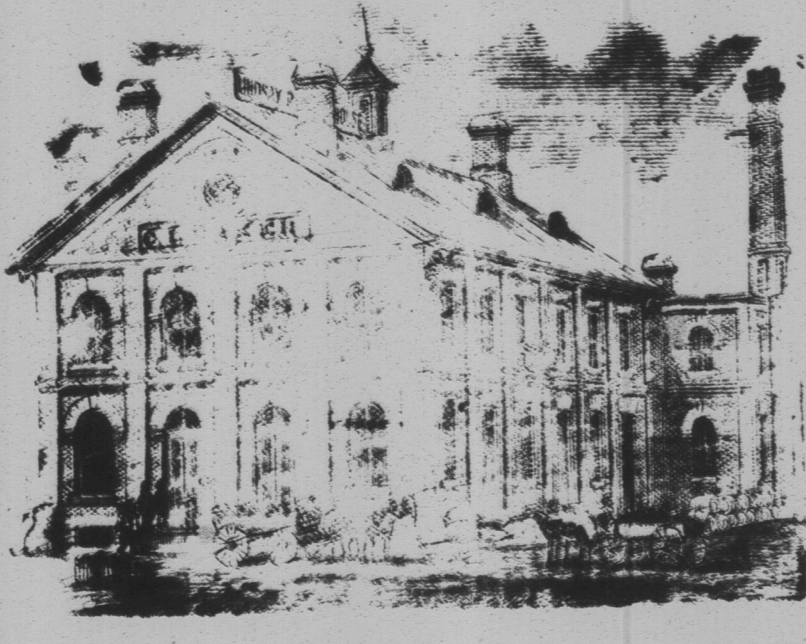
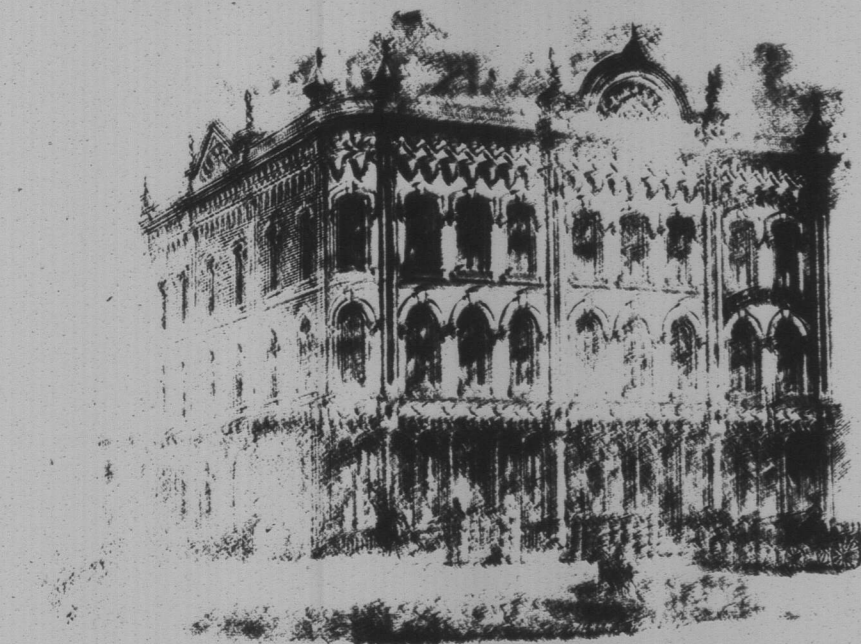


CHAS. L. BAKER,

CHAS. L. BAKER,

CHAS. L. BAKER,

TREASURER'S SALE OF LAND
In the County of Victoria, for arrears of Taxes, in the
LINDSAY, ON
Wednesday, the 21st day of February



WHOLESALE & RETAIL GROCER,
Corner of Kent and Cambridge Streets,
LINDSAY

PROPRIETOR OF
LINDSAY PACKING HOUSE
CAMBRIDGE STREET, LINDSAY.

Dealer in
GRAIN PRODUCE.

APPRECIATION AND THE PROOF
BY NUMBERS

The subscribers having cleared out their whole stock of Liquors, are now getting in one of the most complete Stocks of GROCERIES, CROCKERY, WOODENWARE, GLASSWARE, &c.

LIQUOR BUSINESS GIVEN UP.

The Subscribers having cleared out their whole stock of Liquors, are now getting in one of the most complete Stocks of GROCERIES, CROCKERY, WOODENWARE, GLASSWARE, &c.

KEITH'S AGRICULTURAL Warehouse. REAPERS, REAPERS.

Now is the time to get a reaper. The machine that has no equal, also first-class supported frame and wheels of all-steel on hard iron. The new Patent Hand Reapers that will reap any kind of grain to perfection. Machines of every kind the farmers want in their crops. The cheapest and best machine always on hand.

TEAS! TEAS! TEAS!

150 BOXES OF TEAS, JUST RECEIVED AT THE VICTORIA TEA STORE

1 lb. GUNPOWDER for \$1.00, worth \$1.50.
1 lb. THE YOUNG HYSON for \$1.00, worth \$1.50.
1 lb. THE TWANKEY for \$1.00, worth \$1.50.
1 lb. TEA DUST for \$1.00, worth \$1.50.

CALL EARLY. DRY GOODS, READY-MADE CLOTHING. JAMES WATSON

Royal Canadian INSURANCE COMPANY.

Amount of Capital subscribed, \$500,000. Total Cash Assets, \$279,739. Total liabilities, \$279,739. Total Income during 1915, \$1,088,000.

ACCIDENT INSURANCE COY OF CANADA.

The only Canadian Company solely devoted to Insurance against Accidents, and giving definite Bonus to the Policy holders.

Apply to CORNELL & MAGUIRE, General Agents.

Consumption Cured! An old physician, retired from active practice, having had placed in his hands by an East India Missionary the formula of a Vegetable Remedy, for the speedy and permanent cure of Consumption, Asthma, Bronchitis, Catarrh, and all Throat and Lung Affections, also a Powerful and Radical Cure for Nervous Debility, and all Nervous Complaints, after having thoroughly tested its wonderful curative powers in thousands of cases, feels it his duty to make it known to his suffering fellow-men, actuated by this motive, and a conscientious desire to relieve human suffering, he will send gratis, to all who desire it, this medicine, with full directions for its use, and a copy of the book, "The Cause of Consumption," by mail, on receipt of a stamp, naming the paper.

BLANKET INSURANCE POLICY

The cover farm property, from the Agricultural Bank of Canada. A Specific Policy representing the best as good as a bond and is far more reliable.

Apply to CORNELL & MAGUIRE, General Agents.

CATARRH

Wetness Cured by Four Remedies: Constitutional Catarrh, Painful Urinary, Back and Lung, and Discharge in Throat Disappear.

ISOLATED RISK

FARMERS' FIRE INSURANCE CO.

Capital, \$500,000. Assets, \$1,100,000.

Apply to CORNELL & MAGUIRE, General Agents.

English Remedy!

Specific Medicine.

Apply to CORNELL & MAGUIRE, General Agents.

PIANO FORTES, GEORGE WRIGHT, PAINTER.

Apply to GEORGE WRIGHT, Painter.

GLASGOW WAREHOUSE!

Apply to Glasgow Warehouse!

LOOK HERE!

Apply to LOOK HERE!

FALL & WINTER STOCK NOW COMPLETE

Apply to FALL & WINTER STOCK NOW COMPLETE.

LADIES, GENTS AND CHILDREN.

Apply to LADIES, GENTS AND CHILDREN.

HARNESS, HARNESS.

Apply to HARNESS, HARNESS.

ORGANS TO RENT.

Apply to ORGANS TO RENT.

WARNING TO WORKMEN

Workmen are warned to be careful of their health and safety. The use of machinery and tools should be done with care and attention.

JACKSON & McTAVISH

Hamilton Block, Kent Street

THE BOSS ORGAN!

The Boss Organ is the most popular and profitable of all organs. It is easy to play and produces a rich, full sound.

SPECIAL NOTICE.

An Immediate Settlement is required. Those who are not prompt in this matter will incur heavy costs.

D. S. MACKAY.

LINDSAY Sash Door and Blind Factory.

Corner of Kent and William Sts., Lindsay. We have in stock the Howe, Singer, Appleton, Royal, Lockman, Venus and other Sewing Machines.

EDMUND GREGORY, DRUGGIST.

Corner of Kent and William Sts., Lindsay.

MALCOM MORISON'S Annual Cheap Sale of DRY GOODS.

White Dress Shirts, and Flannel Under-shirts & Drawers.

DRESS GOODS, PRINTS,

Plain & Fancy Flannels, Blankets, Tickings, Towels, Towelling.

GLASGOW WAREHOUSE!

Apply to Glasgow Warehouse!

LOOK HERE!

Apply to LOOK HERE!

FALL & WINTER STOCK NOW COMPLETE

Apply to FALL & WINTER STOCK NOW COMPLETE.

LADIES, GENTS AND CHILDREN.

Apply to LADIES, GENTS AND CHILDREN.

HARNESS, HARNESS.

Apply to HARNESS, HARNESS.

ORGANS TO RENT.

Apply to ORGANS TO RENT.

AT THE CENTENNIAL

"DOMINION"

THE HIGHEST AWARD.

International Medal And Diploma.

BEST REED ORGAN IN THE WORLD.

The only Organ outside of the United States receiving an International Medal.

Although seven Canadian Manufacturers were competing.

SEND FOR PRICE LISTS.

Address, DOMINION ORGAN CO., BOWMANVILLE, ONT.

WETHERUP & LOGAN, Agents, Lindsay.

FALL AND WINTER STOCK COMPLETE.

Apply to FALL AND WINTER STOCK COMPLETE.

W.M. WHITE ROOTS AND SHOES.

Apply to W.M. WHITE ROOTS AND SHOES.

Mens', Women's and Children's Wear.

Apply to Mens', Women's and Children's Wear.

CUSTOM WORK A SPECIALTY.

Apply to CUSTOM WORK A SPECIALTY.

MILLINERY, MANTLE, FANCY GOODS

Apply to MILLINERY, MANTLE, FANCY GOODS.

DRESSMAKING ESTABLISHMENT.

Apply to DRESSMAKING ESTABLISHMENT.

"Ontario House," Lindsay. (Duck's Old Stand.)

Apply to "Ontario House," Lindsay.

MRS. SHERIDAN.

Apply to MRS. SHERIDAN.

HARNESS, HARNESS.

Apply to HARNESS, HARNESS.

ORGANS TO RENT.

Apply to ORGANS TO RENT.

Table with columns for Lot, Part, and Description. It lists various parcels of land for sale, including their locations and areas.

Table with columns for Lot, Part, and Description. It lists various parcels of land for sale, including their locations and areas.

Table with columns for Lot, Part, and Description. It lists various parcels of land for sale, including their locations and areas.

Table with columns for Lot, Part, and Description. It lists various parcels of land for sale, including their locations and areas.

Table with columns for Lot, Part, and Description. It lists various parcels of land for sale, including their locations and areas.

Table with columns for Lot, Part, and Description. It lists various parcels of land for sale, including their locations and areas.

Apply to the Treasurer's Office for more information.