

Price & Profit are

DUNDAS & FLAVELLE BROTHERS,

DIRECT IMPORTERS OF
ENGLISH, SCOTCH AND IRISH TWEEDS AND CLOTHS.

Exclusive Agents and Direct Importers of Crossley's Celebrated Tapestry and Brussels Carpets,
Controlling also the "Flora" Wool Carpets, excelling other makes in Beauty of Colors and Firmness of Texture.

Our arrangements are to receive these goods direct from the Manufacturers, thus enabling us to compete with the largest City Dealers.

DUNDAS & FLAVELLE BROS.

Fisher & Killaby,
LINDSAY LUMBER AND WOOD YARD.
FISHER & KILLABY,
PROPRIETORS.
Wholesale and Retail Dealers in all kinds of LUMBER AND WOOD.

DR. WOOD
of the very best quality delivered in any part of the town, and in quantities to suit purchasers. Also Lumber, Shingles and Lath at shortest notice. Orders for J. KRIFER'S store will be promptly attended to.
Lindsay, Dec. 18th, 1904.

New Advertisements This Week.
Strayed—Thos. McNeil.
Sergeant—John Richardson.
Lost of Thos. J. Graham.
Return to Rent—J. B. Graham.
Election Card—A. D. Mallon.
Stores at Court James Clarke.
Organ—G. W. Jones, Orillia.
Clover Seed Wanted—J. Keith.
Carpenter—Dundas & Flavell Bros.
Send Orders for Sale—Thos. Collins.
Sweeping Sale of Stores—W. Howe.

The Canadian Post.

LINDSAY, FRIDAY, DEC. 24, 1904.
LOCAL MATTERS.

VICTORIA COUNTY COURT.

December Session.
(Before His Honor Judge Deas.)
The December session of the Victoria county court was opened at the court room Tuesday week by his honor Judge Deas. The crown business was conducted by Mr. A. P. Devlin, county attorney.

GRAND JURY.
The following gentlemen were sworn in as grand jurors: T. B. Deas, foreman; Wm. Adams, John Aitken, Jas. Bryson, Ben. Cook, Ben. Carver, Wm. Dundas, Alexander Ferguson, Philip Farley, John Fox, Chris. Gillson, Robert Henderson, J. Hutchinson, G. G. Keith, S. H. Mathers, Alexander Munro, Donald McIntyre, D. McNeil, A. McFarlane, Wm. Netherston, Jas. Peel, South Pollock, Wm. Swaine, Morgan Waugh.

GRAND JURY PRESENTMENT.
Your grand jury submit the following presentment:
They have investigated the cases brought before them by the county attorney and are pleased to find the calendar so light. If few cases are submitted here, call for special mention.
On visiting the goal we were impressed with the clean and neat appearance of every compartment, which certainly reflects the greatest credit upon the officials in charge. We were glad to find that the prisoners were clean and in good health, and that the food was of a practical nature, and would have been appreciated if the occasion and the severity of the court order would have permitted a show of feeling.

CRIMINAL CASES.
QUEEN V. MIDLAND RAILWAY.—This was a case brought against the Midland railway in the town of Lindsay by allowing freight trains to remain across the street for such an unusual time as to prevent the coming to and from town from using the street. Although complaints against several times no attention was paid to such remonstrance. The company, through their attorneys, pleaded not guilty. In consequence of questions arising at the trial it was thought proper by the court and by counsel for the crown and defense to allow the case to be tried at the court house at next court. Mr. Higgar for the crown, Mr. Bell for the defense; for defendant: A. P. Devlin for crown.
QUEEN V. JACKSON.—The prisoner was charged with committing a felony as charged upon his wife, having taken a kettle from the cook stove and threatened her with it to knock her brains out. Medical evidence was given to show that Jackson had been severely injured. Prisoner was found guilty and sentenced to two years imprisonment in the goal at hard labor. A. P. Devlin for the crown; Hugh O'Leary for prisoner.

QUEEN V. WILLIAMS.—The prisoner was charged with larceny, having taken money from a drawer in the store of D. A. McDonald, east ward. In consequence of the illness of witnesses for the prosecution the case was adjourned to next court. A. P. Devlin for the crown; Melville & Hopkings for prisoner. Bell was taken for the appearance of prisoner.
QUEEN V. HENRY.—Case of alleged larceny of a coat. No bill was laid.
QUEEN V. BELL.—A case of larceny of \$50. No bill.

CIVIL CASES.
JONES V. STEVENSON.—This was an action for recovery of the price of a horse by the defendant to the plaintiff and her

Wholesale and Retail Dealers for Santa Clara at SOANES'—192.
Wholesale and Retail Dealers for Santa Clara at SOANES'—192.
Wholesale and Retail Dealers for Santa Clara at SOANES'—192.

Wholesale and Retail Dealers for Santa Clara at SOANES'—192.
Wholesale and Retail Dealers for Santa Clara at SOANES'—192.
Wholesale and Retail Dealers for Santa Clara at SOANES'—192.

Wholesale and Retail Dealers for Santa Clara at SOANES'—192.
Wholesale and Retail Dealers for Santa Clara at SOANES'—192.
Wholesale and Retail Dealers for Santa Clara at SOANES'—192.

Wholesale and Retail Dealers for Santa Clara at SOANES'—192.
Wholesale and Retail Dealers for Santa Clara at SOANES'—192.
Wholesale and Retail Dealers for Santa Clara at SOANES'—192.

Wholesale and Retail Dealers for Santa Clara at SOANES'—192.
Wholesale and Retail Dealers for Santa Clara at SOANES'—192.
Wholesale and Retail Dealers for Santa Clara at SOANES'—192.

Wholesale and Retail Dealers for Santa Clara at SOANES'—192.
Wholesale and Retail Dealers for Santa Clara at SOANES'—192.
Wholesale and Retail Dealers for Santa Clara at SOANES'—192.

Wholesale and Retail Dealers for Santa Clara at SOANES'—192.
Wholesale and Retail Dealers for Santa Clara at SOANES'—192.
Wholesale and Retail Dealers for Santa Clara at SOANES'—192.

Wholesale and Retail Dealers for Santa Clara at SOANES'—192.
Wholesale and Retail Dealers for Santa Clara at SOANES'—192.
Wholesale and Retail Dealers for Santa Clara at SOANES'—192.

Wholesale and Retail Dealers for Santa Clara at SOANES'—192.
Wholesale and Retail Dealers for Santa Clara at SOANES'—192.
Wholesale and Retail Dealers for Santa Clara at SOANES'—192.

Wholesale and Retail Dealers for Santa Clara at SOANES'—192.
Wholesale and Retail Dealers for Santa Clara at SOANES'—192.
Wholesale and Retail Dealers for Santa Clara at SOANES'—192.

Wholesale and Retail Dealers for Santa Clara at SOANES'—192.
Wholesale and Retail Dealers for Santa Clara at SOANES'—192.
Wholesale and Retail Dealers for Santa Clara at SOANES'—192.

Wholesale and Retail Dealers for Santa Clara at SOANES'—192.
Wholesale and Retail Dealers for Santa Clara at SOANES'—192.
Wholesale and Retail Dealers for Santa Clara at SOANES'—192.

Wholesale and Retail Dealers for Santa Clara at SOANES'—192.
Wholesale and Retail Dealers for Santa Clara at SOANES'—192.
Wholesale and Retail Dealers for Santa Clara at SOANES'—192.

Wholesale and Retail Dealers for Santa Clara at SOANES'—192.
Wholesale and Retail Dealers for Santa Clara at SOANES'—192.
Wholesale and Retail Dealers for Santa Clara at SOANES'—192.

Wholesale and Retail Dealers for Santa Clara at SOANES'—192.
Wholesale and Retail Dealers for Santa Clara at SOANES'—192.
Wholesale and Retail Dealers for Santa Clara at SOANES'—192.

Wholesale and Retail Dealers for Santa Clara at SOANES'—192.
Wholesale and Retail Dealers for Santa Clara at SOANES'—192.
Wholesale and Retail Dealers for Santa Clara at SOANES'—192.

Wholesale and Retail Dealers for Santa Clara at SOANES'—192.
Wholesale and Retail Dealers for Santa Clara at SOANES'—192.
Wholesale and Retail Dealers for Santa Clara at SOANES'—192.

Wholesale and Retail Dealers for Santa Clara at SOANES'—192.
Wholesale and Retail Dealers for Santa Clara at SOANES'—192.
Wholesale and Retail Dealers for Santa Clara at SOANES'—192.

Wholesale and Retail Dealers for Santa Clara at SOANES'—192.
Wholesale and Retail Dealers for Santa Clara at SOANES'—192.
Wholesale and Retail Dealers for Santa Clara at SOANES'—192.

Wholesale and Retail Dealers for Santa Clara at SOANES'—192.
Wholesale and Retail Dealers for Santa Clara at SOANES'—192.
Wholesale and Retail Dealers for Santa Clara at SOANES'—192.

Wholesale and Retail Dealers for Santa Clara at SOANES'—192.
Wholesale and Retail Dealers for Santa Clara at SOANES'—192.
Wholesale and Retail Dealers for Santa Clara at SOANES'—192.

Wholesale and Retail Dealers for Santa Clara at SOANES'—192.
Wholesale and Retail Dealers for Santa Clara at SOANES'—192.
Wholesale and Retail Dealers for Santa Clara at SOANES'—192.

Wholesale and Retail Dealers for Santa Clara at SOANES'—192.
Wholesale and Retail Dealers for Santa Clara at SOANES'—192.
Wholesale and Retail Dealers for Santa Clara at SOANES'—192.

Wholesale and Retail Dealers for Santa Clara at SOANES'—192.
Wholesale and Retail Dealers for Santa Clara at SOANES'—192.
Wholesale and Retail Dealers for Santa Clara at SOANES'—192.

Wholesale and Retail Dealers for Santa Clara at SOANES'—192.
Wholesale and Retail Dealers for Santa Clara at SOANES'—192.
Wholesale and Retail Dealers for Santa Clara at SOANES'—192.

Wholesale and Retail Dealers for Santa Clara at SOANES'—192.
Wholesale and Retail Dealers for Santa Clara at SOANES'—192.
Wholesale and Retail Dealers for Santa Clara at SOANES'—192.

Wholesale and Retail Dealers for Santa Clara at SOANES'—192.
Wholesale and Retail Dealers for Santa Clara at SOANES'—192.
Wholesale and Retail Dealers for Santa Clara at SOANES'—192.

Wholesale and Retail Dealers for Santa Clara at SOANES'—192.
Wholesale and Retail Dealers for Santa Clara at SOANES'—192.
Wholesale and Retail Dealers for Santa Clara at SOANES'—192.

Wholesale and Retail Dealers for Santa Clara at SOANES'—192.
Wholesale and Retail Dealers for Santa Clara at SOANES'—192.
Wholesale and Retail Dealers for Santa Clara at SOANES'—192.

Wholesale and Retail Dealers for Santa Clara at SOANES'—192.
Wholesale and Retail Dealers for Santa Clara at SOANES'—192.
Wholesale and Retail Dealers for Santa Clara at SOANES'—192.

Wholesale and Retail Dealers for Santa Clara at SOANES'—192.
Wholesale and Retail Dealers for Santa Clara at SOANES'—192.
Wholesale and Retail Dealers for Santa Clara at SOANES'—192.

Wholesale and Retail Dealers for Santa Clara at SOANES'—192.
Wholesale and Retail Dealers for Santa Clara at SOANES'—192.
Wholesale and Retail Dealers for Santa Clara at SOANES'—192.

Wholesale and Retail Dealers for Santa Clara at SOANES'—192.
Wholesale and Retail Dealers for Santa Clara at SOANES'—192.
Wholesale and Retail Dealers for Santa Clara at SOANES'—192.

Wholesale and Retail Dealers for Santa Clara at SOANES'—192.
Wholesale and Retail Dealers for Santa Clara at SOANES'—192.
Wholesale and Retail Dealers for Santa Clara at SOANES'—192.

Wholesale and Retail Dealers for Santa Clara at SOANES'—192.
Wholesale and Retail Dealers for Santa Clara at SOANES'—192.
Wholesale and Retail Dealers for Santa Clara at SOANES'—192.

Wholesale and Retail Dealers for Santa Clara at SOANES'—192.
Wholesale and Retail Dealers for Santa Clara at SOANES'—192.
Wholesale and Retail Dealers for Santa Clara at SOANES'—192.

Wholesale and Retail Dealers for Santa Clara at SOANES'—192.
Wholesale and Retail Dealers for Santa Clara at SOANES'—192.
Wholesale and Retail Dealers for Santa Clara at SOANES'—192.

Wholesale and Retail Dealers for Santa Clara at SOANES'—192.
Wholesale and Retail Dealers for Santa Clara at SOANES'—192.
Wholesale and Retail Dealers for Santa Clara at SOANES'—192.

Wholesale and Retail Dealers for Santa Clara at SOANES'—192.
Wholesale and Retail Dealers for Santa Clara at SOANES'—192.
Wholesale and Retail Dealers for Santa Clara at SOANES'—192.

Wholesale and Retail Dealers for Santa Clara at SOANES'—192.
Wholesale and Retail Dealers for Santa Clara at SOANES'—192.
Wholesale and Retail Dealers for Santa Clara at SOANES'—192.

Wholesale and Retail Dealers for Santa Clara at SOANES'—192.
Wholesale and Retail Dealers for Santa Clara at SOANES'—192.
Wholesale and Retail Dealers for Santa Clara at SOANES'—192.

Wholesale and Retail Dealers for Santa Clara at SOANES'—192.
Wholesale and Retail Dealers for Santa Clara at SOANES'—192.
Wholesale and Retail Dealers for Santa Clara at SOANES'—192.

Wholesale and Retail Dealers for Santa Clara at SOANES'—192.
Wholesale and Retail Dealers for Santa Clara at SOANES'—192.
Wholesale and Retail Dealers for Santa Clara at SOANES'—192.

Wholesale and Retail Dealers for Santa Clara at SOANES'—192.
Wholesale and Retail Dealers for Santa Clara at SOANES'—192.
Wholesale and Retail Dealers for Santa Clara at SOANES'—192.

Wholesale and Retail Dealers for Santa Clara at SOANES'—192.
Wholesale and Retail Dealers for Santa Clara at SOANES'—192.
Wholesale and Retail Dealers for Santa Clara at SOANES'—192.

Wholesale and Retail Dealers for Santa Clara at SOANES'—192.
Wholesale and Retail Dealers for Santa Clara at SOANES'—192.
Wholesale and Retail Dealers for Santa Clara at SOANES'—192.

Wholesale and Retail Dealers for Santa Clara at SOANES'—192.
Wholesale and Retail Dealers for Santa Clara at SOANES'—192.
Wholesale and Retail Dealers for Santa Clara at SOANES'—192.

Wholesale and Retail Dealers for Santa Clara at SOANES'—192.
Wholesale and Retail Dealers for Santa Clara at SOANES'—192.
Wholesale and Retail Dealers for Santa Clara at SOANES'—192.

A Bulletin from McTAVISH!

THOUSANDS OF PEOPLE TRY TO THINK

Where they can purchase Goods to the best advantage, and it is but fair to presume that every one will try to buy where it suits them best. Every one is entitled to have ONE DOLLAR'S WORTH FOR ONE DOLLAR, and our aim is to always give every purchaser full value for the money paid. We can sell you as low as you can buy in any cash store in the town. We have found out that no matter if times are dull, people will buy if bargains are offered. This week we have arranged to run off the following big bargain lots, in

Corsets, Overcoats, Gent's Furnishings, Furs, Tweeds, Dress Goods, Etc.

The qualities are excellent and the public know that we ask far short of what others are wanting.

E. MCTAVISH,

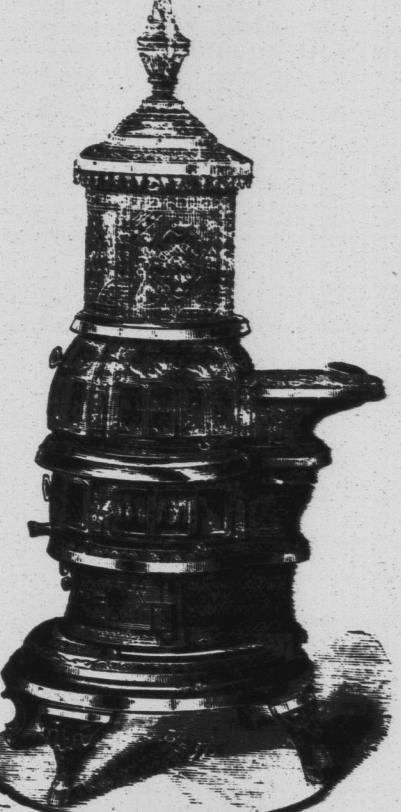
Lindsay, Nov. 13th, 1894. Of the Palace Shoe House. W. Howe.

THE PEOPLE'S STOVE SHOP.

W. HOWE

Has determined to make a Grand Clearing Sale of all kinds of Cooking, Box, Parlour and Coal Stoves, including all the principal makes and leading Stoves AT OR ABOUT COST, for next 30 days only.

COAL STOVES.
COOKS.
The Sultana, Countess, Gurney Wood Cook, Burdette, and 12 different kinds of Farmer's Elevated Ovens to select from.
Ovens and Double Heaters.
Farmers, Mechanics and all parties wanting Stoves, just call and money won't be refused.
Lindsay, Dec. 24, 1904—30.
W. HOWE, KENT-ST., LINDSAY.



New Advertisements.

CLOVER SEED WANTED!
DO NOT FORGET
AS OLD ESTABLISHMENT
GOODS AT A LOW FIGURE
Mrs. Jemsgager
For which the Highest Price will be paid by
JAMES KEITH,
WILLIAM-ST., LINDSAY.
Dec. 24, 1904—30.

CHRISTIAN UNION.

On the first of January, 1885, THE CHRISTIAN UNION which has been a weekly paper, enlarged from a Thirty to a Forty-four Page paper, will be further enlarged, and will become a Thirty-two Page paper.

It will then give its readers a larger amount of literary matter each week than any other religious weekly in this country, if not in the world.

THE POST AND COUNTRY GENTLEMEN.
The Post and Country Gentlemen, for new subscribers to Jan. 1895, \$2.00. The Post and Western Advertiser, 2.00. The Post and Country Gentlemen, 3.10. The Post and the Century Magazine, 4.10. The Post and St. Nicholas, 5.00. The Post and Rural Canadian, 1.00. The Post and Harper's Magazine, 4.10. The Post and Harper's Weekly, 4.10. The Post and Harper's Bazar, 4.30. The Post and Harper's Young People, 2.75. The Post and American Agriculturist, 2.00. The Post and Book-Raiser's Journal, 1.00. The Post and Grin, 2.00.

THE POST AND COUNTRY GENTLEMEN.
The Post and Country Gentlemen, for new subscribers to Jan. 1895, \$2.00. The Post and Western Advertiser, 2.00. The Post and Country Gentlemen, 3.10. The Post and the Century Magazine, 4.10. The Post and St. Nicholas, 5.00. The Post and Rural Canadian, 1.00. The Post and Harper's Magazine, 4.10. The Post and Harper's Weekly, 4.10. The Post and Harper's Bazar, 4.30. The Post and Harper's Young People, 2.75. The Post and American Agriculturist, 2.00. The Post and Book-Raiser's Journal, 1.00. The Post and Grin, 2.00.