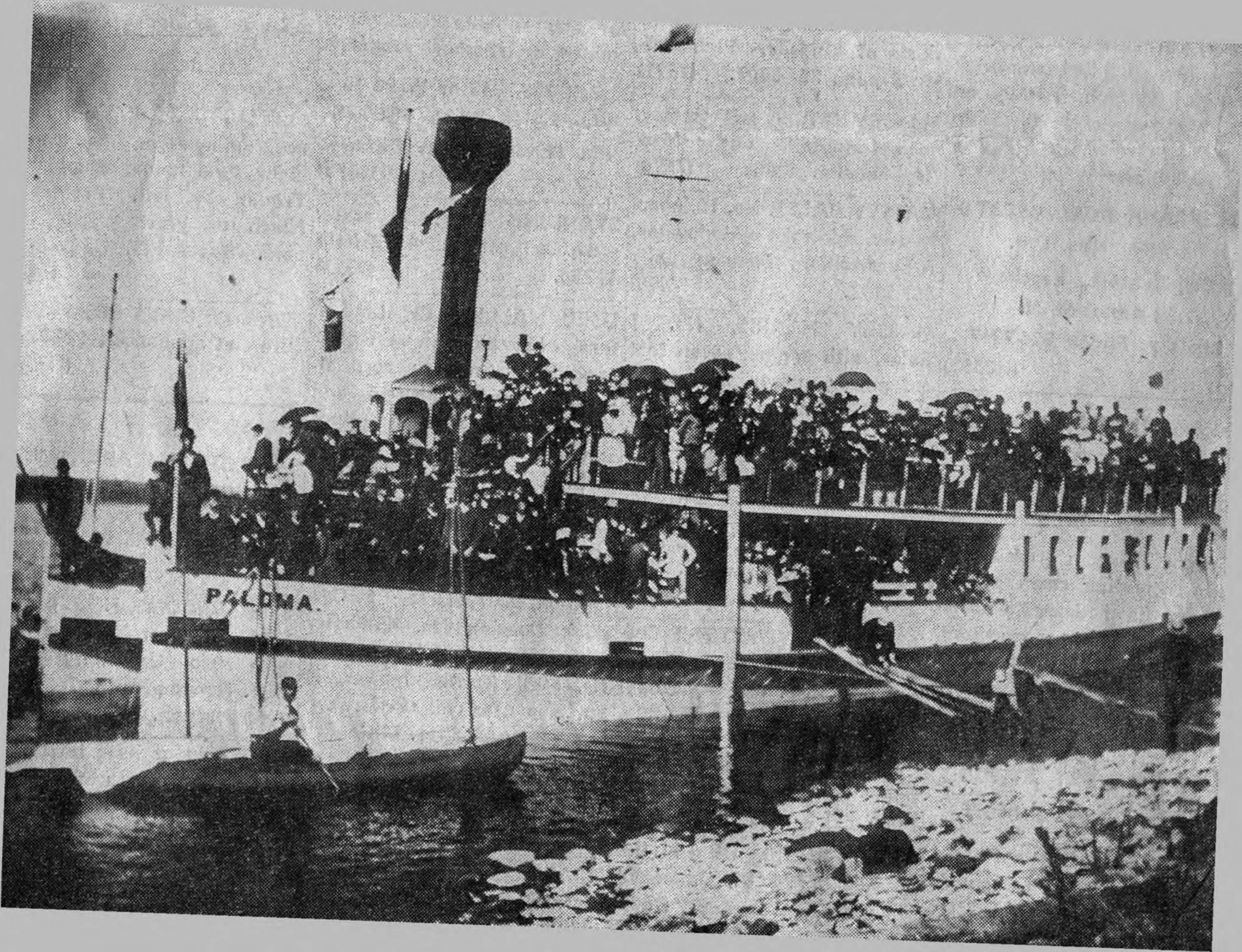


Photographic Peeps into the Past



Reproduced from rare glass negatives in the possession of the Victoria County Historical Society is this photograph of Lindsay in the 1800's. Properties fenced off with tidy rail fences and a stable or small barn on nearly every property seems to have been the custom. Stumps are also readily recognized in many yards.



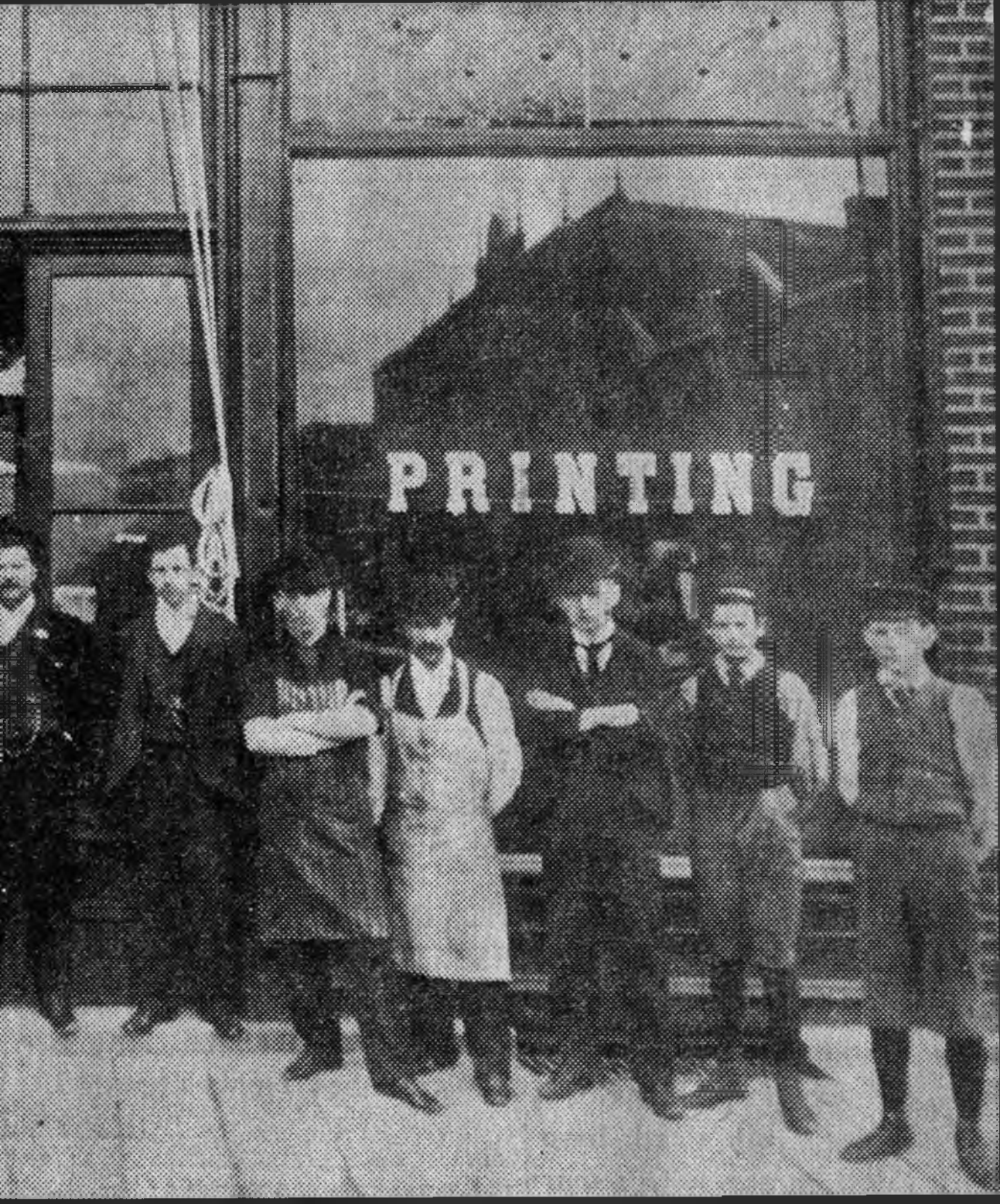
This picture, believed to have been taken in the late 1800's shows the popularity of excursion boats on the Scugog River during that period. Hundreds of persons are crowded onto the Paloma, probably for a Sunday afternoon cruise.



A photograph of a section of Lindsay taken about 1890 shows the Sylvester house on the left and in the distance the third floor of the Lindsay Collegiate with the old grammar school to its immediate left. In the foreground of the picture, apparently taken on Wellington

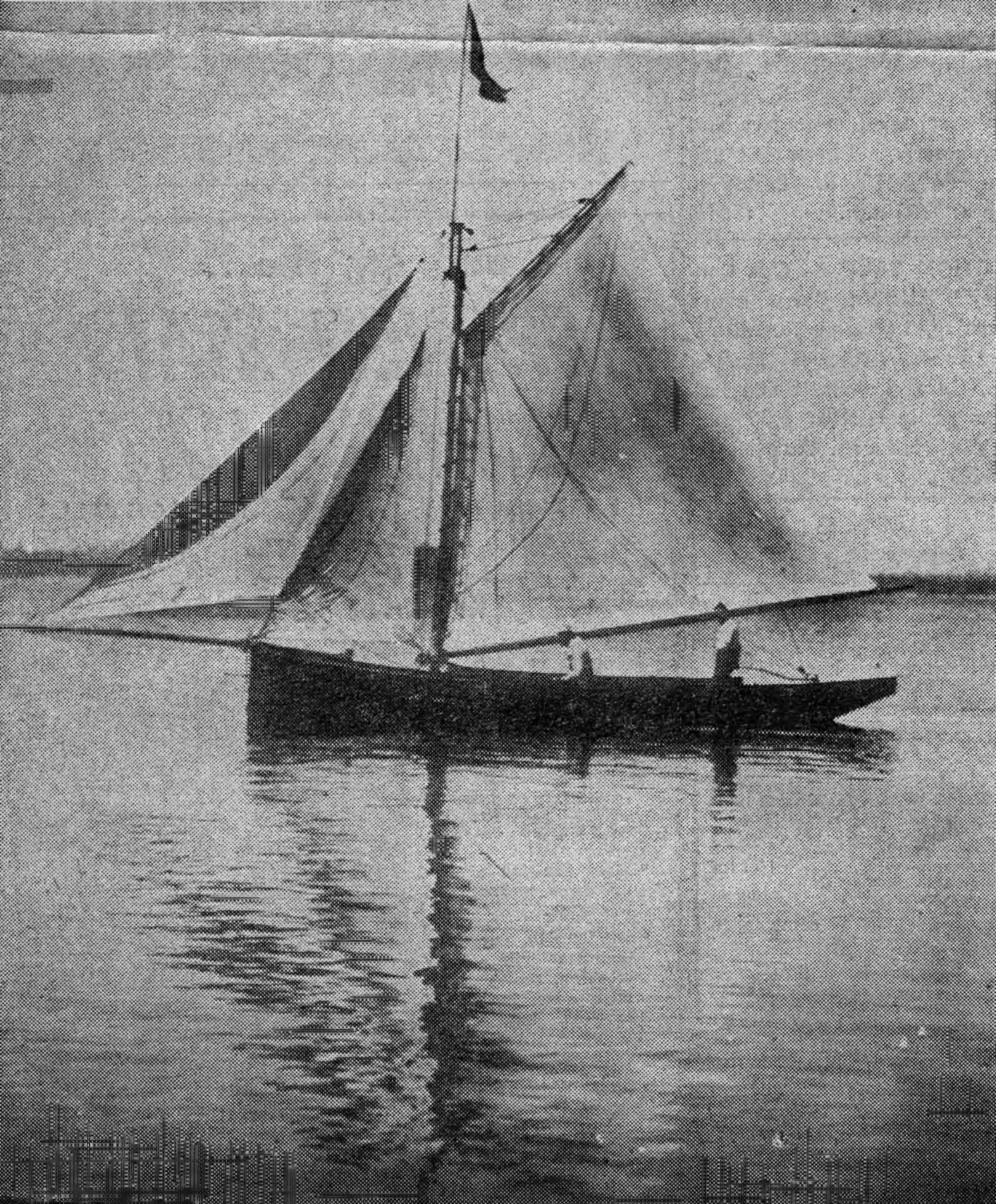
Street east of Victoria Avenue, a frame house on the corner looks very similar to one in that area at the present time. This photo was reproduced from an early glass negative now in the possession of the Victoria County Historical Society.

PRINTING



Pictured are 14 employees of "The Post" taken in 1893 when the office was located on Lindsay Street north about where Polito's Foodlines store is now. The back of the original picture lists 13 of those

portrayed. John Richards, John Moore, W. Ingles, John Bush, Hugh McDean, G. H. Wilson, J. V. McNulty, John Campbell, Wes. Wright, Jas. Shannon, A. O'Boyle, F. Pearson and H. Walsh.



This picture of Mossom Boyd's sailing boat is reproduced from an early glass negative at the Victoria County Museum. Mossom Boyd farmed near Bobcaygeon from 1833 to 1842 then moved to the village where he bought the local lumber mill and built it up into a great lumbering empire. He was an active advocate of the Trent Canal.