



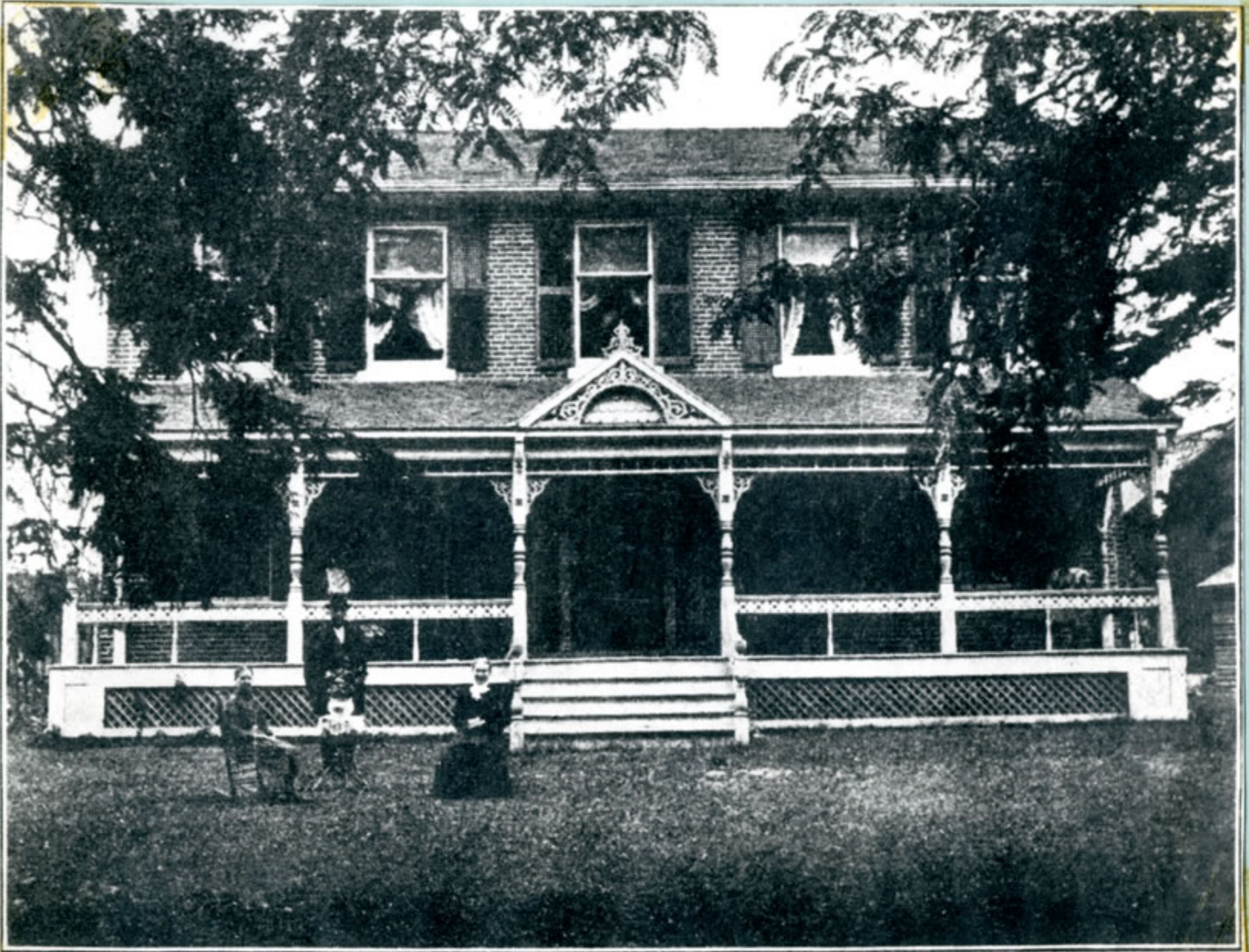
RESIDENCE OF T. EASTERBROOK, ESQ., ALDERSHOT.



OPTICAL ILLUSION—This is what is known as the Magnetic Hill on Easterbrook's road, near Campbell's Corners. Motorists claim that cars, with motor shut off, are drawn up-grade by some magnetic influence. Experts, however, say it's all an optical illusion—that it's actually downgrade, not up.



PROMINENT RESIDENTS—Members of the most prominent families on The Plains, at Campbell's Corners, are from the left, Daniel Easterbrook, his nephew Jack McLelland, and his sister, Mrs. Freda McLelland. The hospitality of the family and their forebears is traditional in the district.



RESIDENCE OF W. W. EASTERBROOK, ESQ., ALDERSHOT.