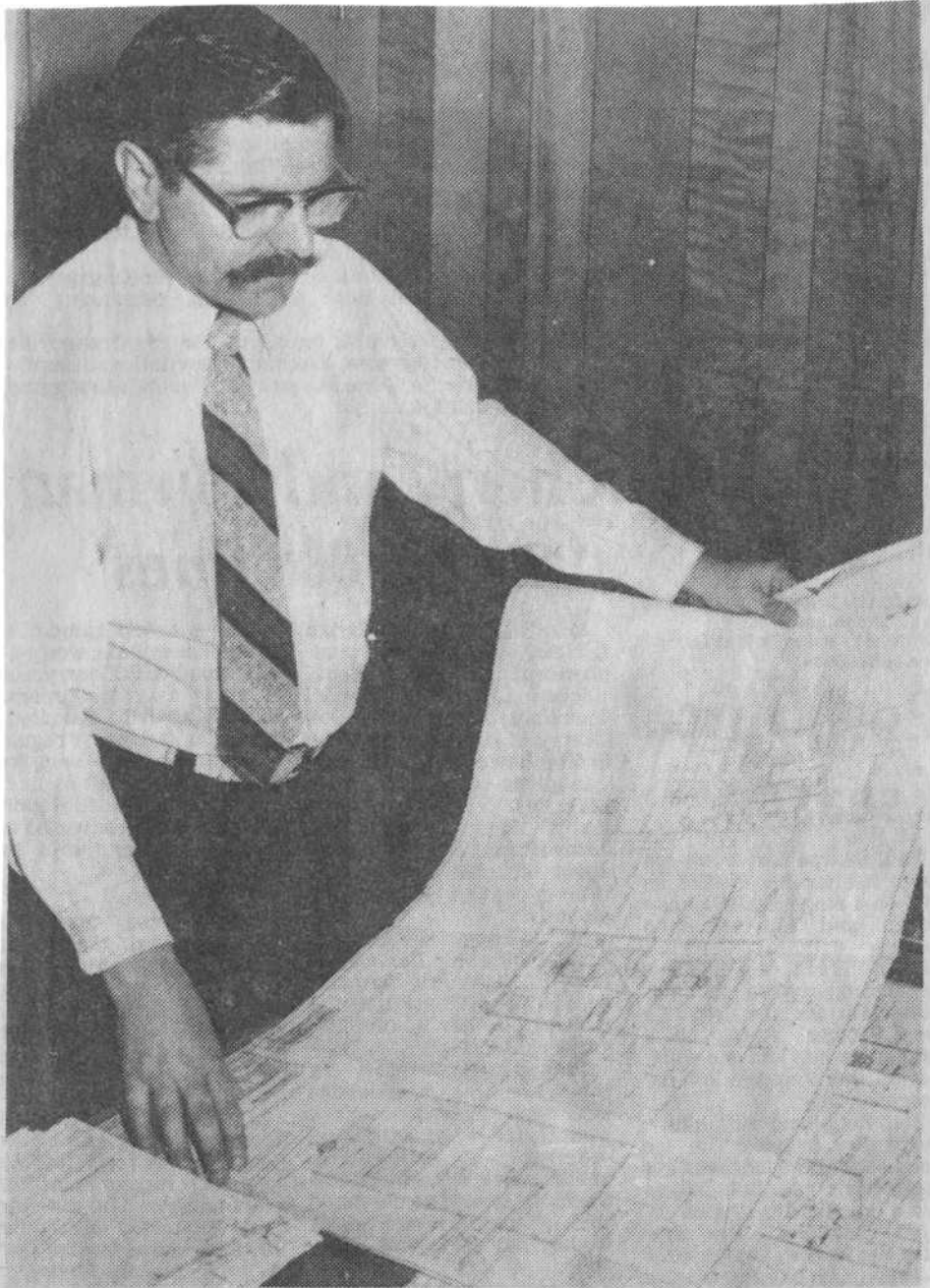


BELLEVILLE INDUSTRIES - Stephens-Adams

Intell July 9, 1978.



Looking at the future

Al Hayward, who heads Stephens-Adams's newly formed waste processing group, examines a schematic plan for a processing plant designed to turn gar-

bage into reusable materials and fuel supplements. The Belleville company will design and build the processing plants for the Canadian market.