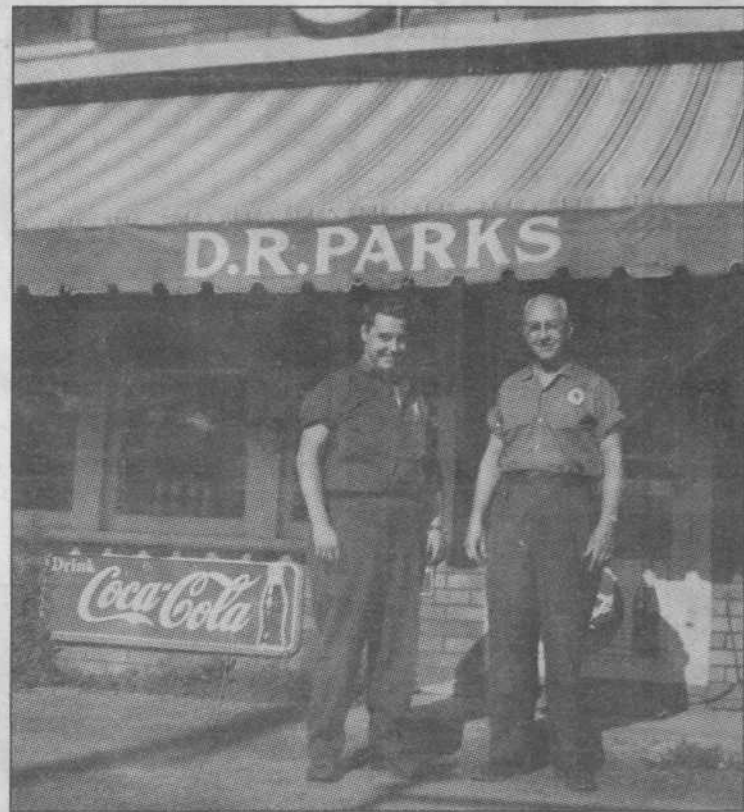


Parks, D.R. Store



When Don and Phyllis Parks' added the service station to their store on Cannifton Road, gas was provided by Shell.

Intelligence, Remember When
Nov. 27, 1995



Ken Ray, left, drove the tank truck for D.R. Parks, delivering fuel to customers as far away as north of Napanee. Don Parks is standing on the right.

many others, their jobs depended on the war. Temporary war work was true to its word.

A change of landscape was in order. Don and Phyllis bought a piece of land in Cannifton with a shack "you could throw a rat through," Don said. They tore it down and built a store with a kitchen on the

ground floor and bedrooms above. Later they built a garage as well.

When Don was 65, in 1978, the Parkses closed the store and retired. The gasoline pumps have long since been removed, but the letters D.R. Parks can still be seen over the door of the old store on Cannifton Road.