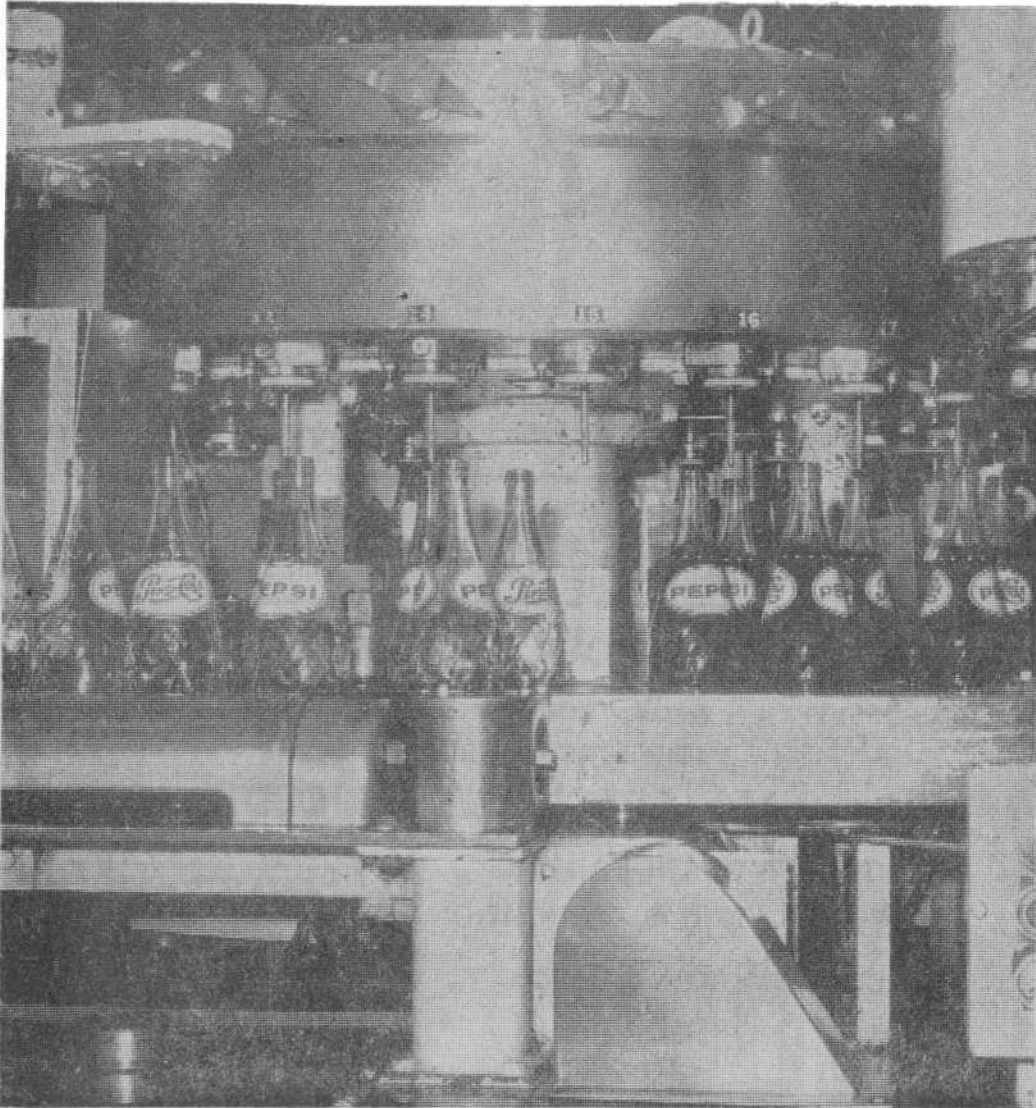


Misener Beverages



✓ *Bel. Industry* **Fillin' Up**

Due to the growing demand during the warmer months, the production of soft drinks increases. At the only locally-owned bottling plants, Misener Beverages bottlers of Pepsi and other soft drinks, the line of bottles rolls on. Charles Misener, owner of Misener Beverages, says the peak months are during the summer but demand has levelled off during the year because of social activities.

July 3/75

Inbill

BELLEVILLE PUBLIC LIBRARY
223 PINNACLE ST.
BELLEVILLE, ONT. K8N 3A7