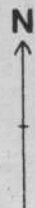


(continued from page one)

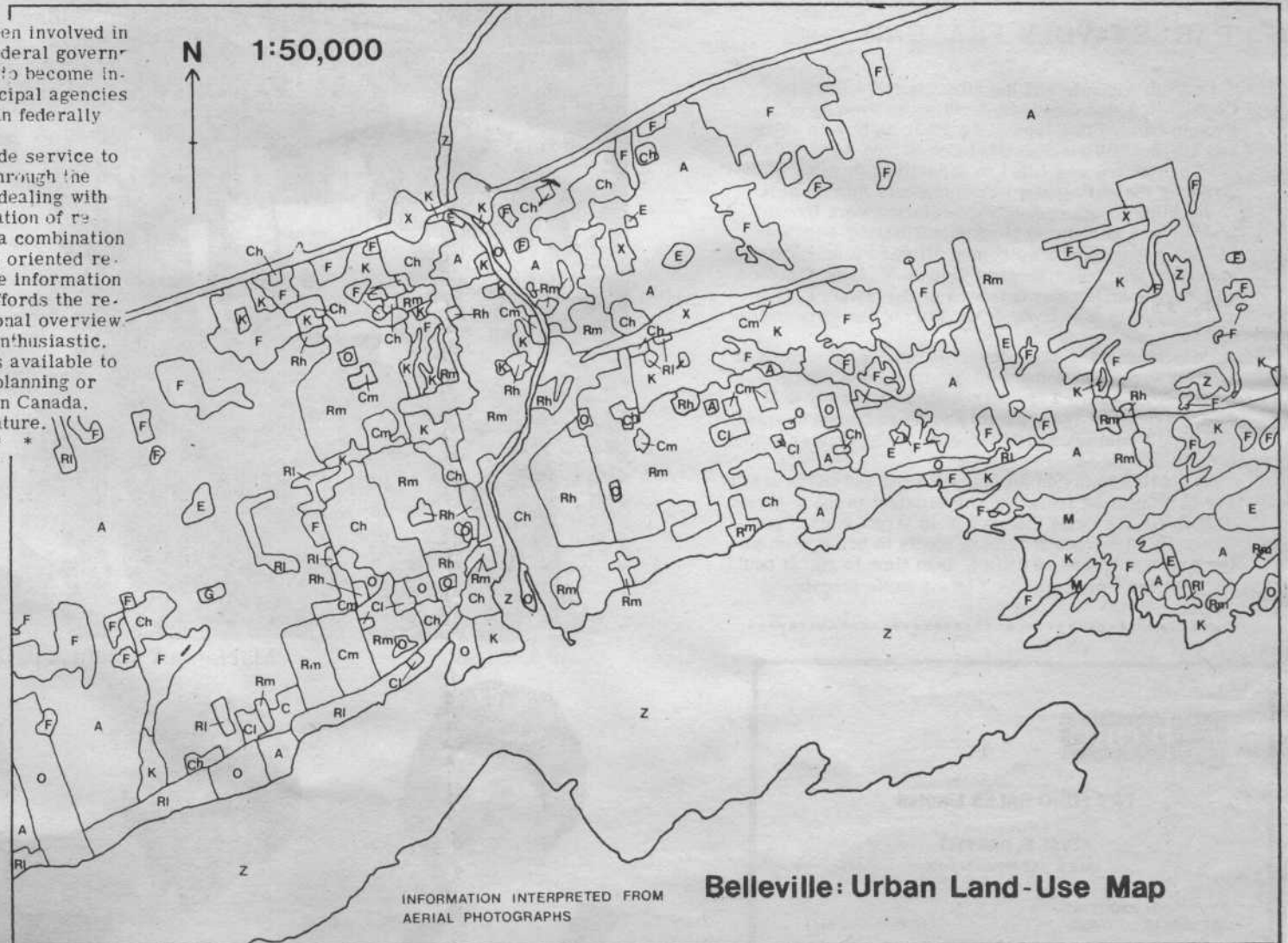
Most of the research the company has been involved in to date has been under contract from the federal government. During the year the company plans to become involved in research for provincial and municipal agencies and private industry as well as continuing in federally contracted research.

The chief aim of the company is to provide service to government, corporations, or individuals through the planning of and/or undertaking of projects dealing with ecology and the environment via the utilization of remote sensing data field investigations, or a combination of both. The company feels that many field oriented research projects are greatly enhanced by the information obtained from remote sensing because it affords the researcher the advantage of a third dimensional overview.

The new Belleville firm with its young, enthusiastic, experienced and fully qualified personnel is available to assist with any ecological or environment planning or problem in the immediate area, anywhere in Canada, or to undertake work of an international nature.



1:50,000



Key

- RI Low Density Residential
- Rm Medium Density Residential
- Rh High Density Residential
- Cl Low Density Commercial
- Cm Medium Density Commercial
- Ch High Density Commercial
- X Transportation
- O Outdoor Recreation
- A Agriculture
- F Forest
- G Orchard and Vineyard
- K Rough Grazing
- Z Water
- E Excavation
- M Marsh or Swamp

INFORMATION INTERPRETED FROM AERIAL PHOTOGRAPHS

Belleville: Urban Land-Use Map