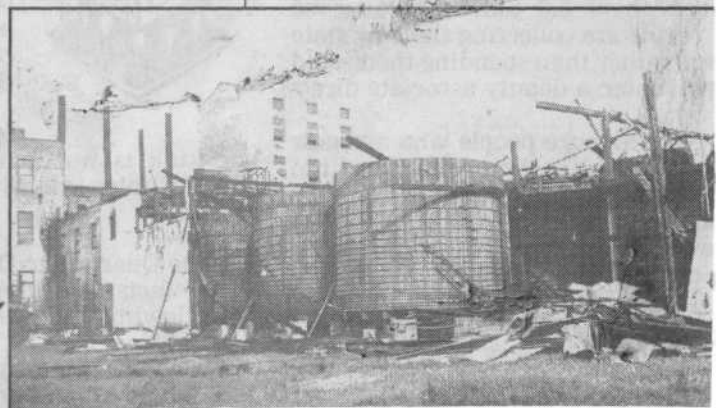


Top, a sketch of the original Corby Mill - 1870. Above left, cattle barns at Corby's Distillery. Left, tobacco grown on the property in 1910, with George Sharpe driving, Dick Johns seated and a tobacco grower from Kentucky at the back.

Above right, an undated photo of the distillery and right, after the fire in 1967.

Photographs courtesy of Hastings County Historical Society



Intelligencer - Mar. 1910 p. 10