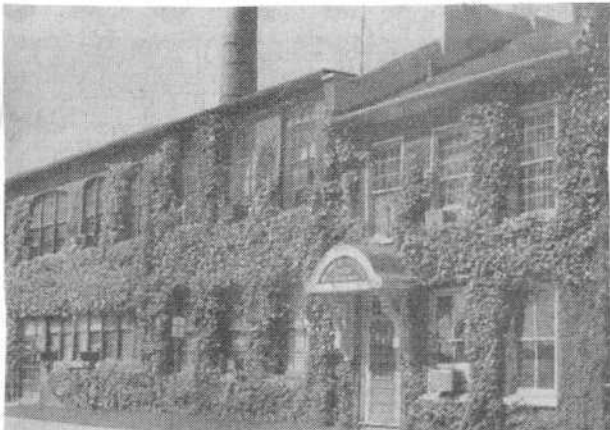


The Belleville Hardware Company Ltd., is pictured in this artist conception. The company — located on Pinnacle Street — was purchased by The Corbin Lock Company in 1947. Its operations were eventually moved to Corbin's Coleman Street location.



The ivy covered brick walls of the Corbin Lock Company on Coleman Street was a familiar sight for Belleville residents. The building was demolished during the 1980s.



SUBMITTED PHOTOS

This picture was taken in 1960 when Jim Elliott was given the desk set prior to his transfer to the corporate head office in Connecticut.