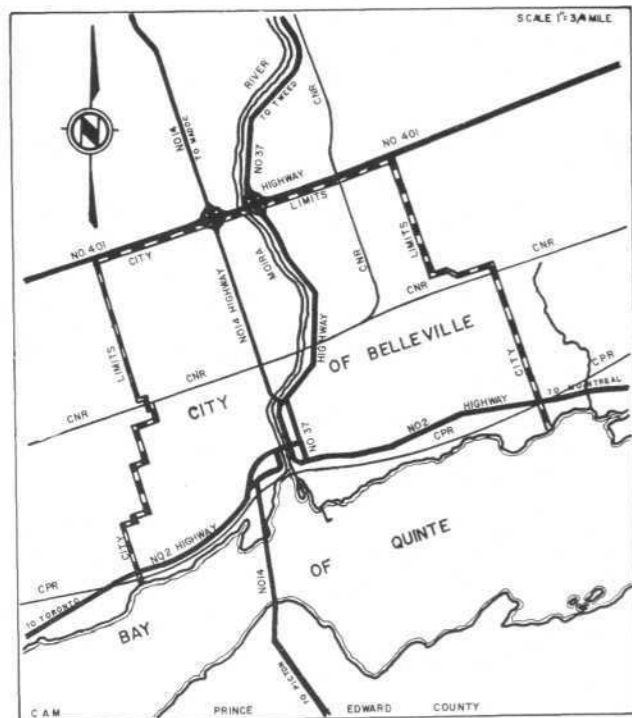




Reconstructed O'Hara Saw Mill

The map below has been prepared to show the relative position of Highway 401 to the City of Belleville. As indicated on the map, both Highway 14 and Highway 37 connect Highway 401 with the heart of the city, and Highway No. 2 which is the main highway from Toronto to Montreal.



## MOIRA RIVER CONSERVATION AUTHORITY

O'Hara Saw Mill was originally built in 1846, and was operated by the family until 1909. It has the straight saw blade driven up and down by water power. The Mill, and surrounding 36 acres, was purchased in 1954 by the Moira River Conservation Authority and is now known as the O'Hara Mill Conservation Area. It is located some 3 miles northwest of Madoc and is easily accessible from Highways No. 7 and No. 62.

The Mill was completely reconstructed by the Authority and now cuts lumber, under water power, just as it did for the O'Hara's. Besides this unique historic attraction, the O'Hara Mill Area offers Picnic Tables, Stone Fire Places, a Nature Trail, and various conservation demonstrations.

The Moira River Conservation Authority is a corporate body formed under the Conservation Authority's Act, with representatives from the urban and rural municipalities in the 1,056 square mile water shed of the Moira River. Its successful operation depends on the interest and co-operation of all the citizens and users of the water shed. Half its annual budget is raised by contributions from the participating municipalities in proportion to their systems, the remainder coming from the Province of Ontario.

The Authority has undertaken an extensive reforestation program and to date has purchased over 8,000 acres for this purpose. It is presently developing three other Conservation Areas, one of which, the 500 acre Col. Roscoe Vanderwater Conservation Area, will be opened in 1960.

Further details of its activities can be secured from the office in the Municipal Building, Cannifton, Ontario.

### HIGHWAY DISTANCE TABLE

Mileage to Belleville from	
Toronto, Ont.	112
Hamilton, Ont.	156
Niagara Falls, Ont.	190
Buffalo, N.Y.	220
Cleveland, Ohio	410
Harrisburgh, Penn.	460
Detroit, Michigan	360
Chicago, Ill.	645
Kingston, Ont.	52
Peterborough (via Marmora)	64
North Bay (via Toronto)	150
Ottawa, Ont. (via Actinolite)	150

### HUNTING GOOD IN HASTINGS

As the hunting seasons approach, many of the resorts in Hastings County make preparations to turn their camps into hunting lodges for sportsmen.

These resorts are easily accessible and the hunter is assured an excellent bag almost at their back door.

Check for correct dates when you buy your hunting license.

## BELLEVILLE

"The Heart of Distribution"

POPULATION - 28,500

### HISTORY

Samuel de Champlain, the great French explorer, discovered, in 1615, an Indian village on the now known Bay of Quinte, by the name of "Asaukhknosk", meaning "The place where the rushes end". Little did Champlain realize that this little Indian village would someday become a rapidly expanding City known as Belleville, and the Heart of Distribution. The site of this Indian village was settled by the United Empire Loyalists in 1789, when the records indicate that fifty families arrived, forming the first U.E.L. settlement at Belleville and its adjoining territory. Belleville's first industry was started in 1790, by Captain John Walden Meyers, on the Moira River, which was a dam and lumber mill.

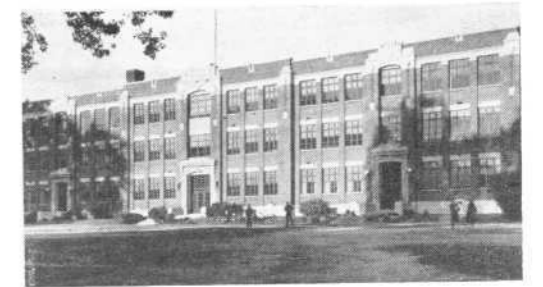
In 1834 Belleville was incorporated as a police village, and in 1850 was incorporated as a town. On March 2nd, 1877, a statute was passed incorporating Belleville as a City, to take effect December 31st, 1877.



ALBERT COLLEGE

### EDUCATION

Located in Belleville is the well known Albert College. Here, students come from all over the world to attend this co-educational school. Also located in Belleville is the Ontario School for the Deaf, where children come from all over the Province of Ontario, who are handicapped by hearing difficulties. They are trained to take a normal part in the Canadian way of life. Belleville has four fine collegiate and vocational schools and three separate schools. The



BELLEVILLE COLLEGIATE INSTITUTE

Ontario Business College provides much to the community and district in preparing young people, particularly, for a business life.

### TRANSPORTATION

Regular city bus service insures economical transportation to any area in the City. Belleville bus terminal provides regular bus service to nearby communities as well as distant points. The Canadian National and Canadian Pacific Railways' main lines are located in Belleville and both systems together provide complete services to all ten Provinces of the Dominion. These railways have full and active inter-switching facilities here.

### RECREATION FACILITIES

Belleville has many fine churches of all denominations. Varied recreational facilities, such as the Belleville Memorial Arena, curling club, golf club, tennis club, yacht club, bowling, boating, baseball, outdoor swimming pool, fishing in the Bay of Quinte, theatres and drive-in theatre, dancing and public library, offers its population a variety of activities and entertainment.



PROTECTED BAY AT VICTORIA PARK, BELLEVILLE