

**"Yes Jim, I'm convinced!
Brantford is our best move"**



BRANTFORD, ONTARIO, CANADA



...and we'll be in excellent company, Jim, with these Brantford industries"

The following is a representative list of over 150 companies now maintaining successful operations in Brantford.

AIRETOOL CANADA LIMITED
 ALLEN-RITCHIE COMPANY LIMITED
 ATLAS POWDER COMPANY, CANADA, LTD.
 BARBER-ELLIS OF CANADA LIMITED
 BARNARD FOUNDRIES LIMITED
 THE BAUER BROS. CO. (CANADA) LTD.
 BAY STATE ABRASIVE PRODUCTS CO. (CANADA) LTD.
 BEAD-X OF CANADA LIMITED
 BEARE BRASS FOUNDRY
 BEHR-MANNING (CANADA) LIMITED
 BELL CITY FOUNDRY (BRANTFORD) LTD.
 BRADLEY MACHINE COMPANY LIMITED
 BRANTCO MACHINE & TOOL COMPANY LTD.
 BRANTFORD BRICK LIMITED
 BRANTFORD CLAY PRODUCTS LIMITED
 BRANTFORD COACH & BODY LIMITED
 THE BRANTFORD CORDAGE COMPANY
 BRANTFORD MECHANICAL DEVICES LTD.
 BRANTFORD MOLDED PLASTICS LIMITED
 BRANTFORD OVEN & RACK COMPANY LTD.
 BRANTFORD PAPER BOX COMPANY LTD.
 BRANTFORD PRECISION LIMITED
 BRANTFORD WELDING & BOILER LIMITED
 BRIDGWATER MACHINE CO. (CANADA) LTD.
 CANADA GLUE COMPANY LIMITED
 THE CANADA VALVE & HYDRANT CO. LTD.
 CANADIAN BLUE BIRD COACH LIMITED
 CANADIAN CELANESE LIMITED
 CANADIAN WESTINGHOUSE COMPANY LTD.
 CATAPHOTE (CANADA) LIMITED
 CARHAYES LIMITED

CHICAGO RAWHIDE MFG. CO. OF CANADA LTD.
 COCA-COLA LIMITED
 COCKSHUTT FARM EQUIPMENT LIMITED
 CROMPTON PARKINSON ELECTRICAL LTD.
 CROWN ELECTRICAL MANUFACTURING LTD.
 DELTA CHEMICALS LIMITED
 DOMINION SIGNS LIMITED
 DUST CONTROL SERVICES LIMITED
 EAGLE PRECISION TOOL LIMITED
 LEONARD ELLIOTT TOOLS LIMITED
 FIBRE PRODUCTS OF CANADA LIMITED
 FIRTH STERLING (CANADA) LIMITED
 FRANCE PACKING OF CANADA LIMITED
 GACO PRODUCTS LIMITED
 GATES RUBBER OF CANADA LIMITED
 GENERAL CASTING COMPANY
 GOODWIN CHUCK COMPANY LIMITED
 H & K CONCRETE SPECIALTIES LIMITED
 HAMILTON PORCELAINS LIMITED
 HARDING CARPETS LIMITED
 HARTLEY FOUNDRY DIVISION
 HUSSMANN REFRIGERATOR COMPANY LTD.
 HYDE SPRING & WIRE (CANADA) LIMITED
 S. C. JOHNSON & SON LIMITED
 KEEPRITE PRODUCTS LIMITED
 KESTER SOLDER CO. OF CANADA LIMITED
 KITCHEN OVERALL & SHIRT CO. LIMITED
 KOEHRING-WATEROUS LIMITED
 LADISH COMPANY OF CANADA LIMITED
 L.C.S. METALS CORPORATION LIMITED
 L & J PLATING COMPANY LIMITED

LOCKWOOD MANUFACTURING CANADA LTD.
 McNICOL ROPES LIMITED
 MARVAL PLASTICS
 MASSEY-FERGUSON LIMITED
 MICROMATIC HONE LIMITED
 J. E. MORRIS WOOD & METAL PATTERNS
 H. E. MOTT COMPANY LIMITED
 MOULDED FIBRE LIMITED
 MURRAY-BRANTFORD LIMITED
 RED CIRCLE CONCRETE PRODUCTS
 RENOLD CHAINS CANADA LTD.
 ROBBINS & MYERS CO. OF CANADA LTD.
 RUFF CLARKSON STEEL LIMITED
 SCARFE & COMPANY LIMITED
 JOHN SMYTH PAINT MANUFACTURING CO.
 SONOCO PRODUCTS COMPANY OF CANADA LTD.
 A. G. SPALDING & BROS. OF CANADA LTD.
 STAINLESS STEEL PRODUCTS LIMITED
 THE STEEL CO. OF CANADA LIMITED
 STERICLOTH PRODUCTS COMPANY LIMITED
 G. F. STERNE & SONS LIMITED
 STOCKTON WIRE PRODUCTS LIMITED
 SUN-X GLASS TINTING CO. OF CANADA LIMITED
 SUPER OIL SEAL MANUFACTURING CO. LTD.
 SYLVA PRODUCTS
 TEXPACK LIMITED
 WATSON MANUFACTURING COMPANY LTD.
 GEORGE WESTON LIMITED
 WORTHINGTON (CANADA) LIMITED
 WOLVERINE CEMENT COMPANY LIMITED
 YORK FARMS, DIVISION CANADA PACKERS LIMITED



"Look at Brantford's location, Bill, it offers everything we're looking for"

LOCATED AT THE HEART OF A MAJOR PORTION OF CANADA'S MARKET & LABOR FORCE.

Brantford is an industrial city, and many well-known manufacturers, such as Cockshutt Farm Equipment and Massey-Ferguson Limited have been located in Brantford since their inception.

Among the many industries in Brantford are foundries, machine shops, tool and die manufacturers, etc., all able to supply parts and equipment for widely diversified industries.

Brantford offers excellent transportation facilities and a stable supply of both skilled and unskilled labor. Nearly one-sixth of the population of Canada is contained within a radius of 75 miles, and Brantford ranks 15th in the gross value of its manufactured products.

There is a more than ample water supply and electric power costs are below the average of other Canadian cities.

Climate-wise, too, Brantford has much to offer, being located in the "banana belt of Canada."

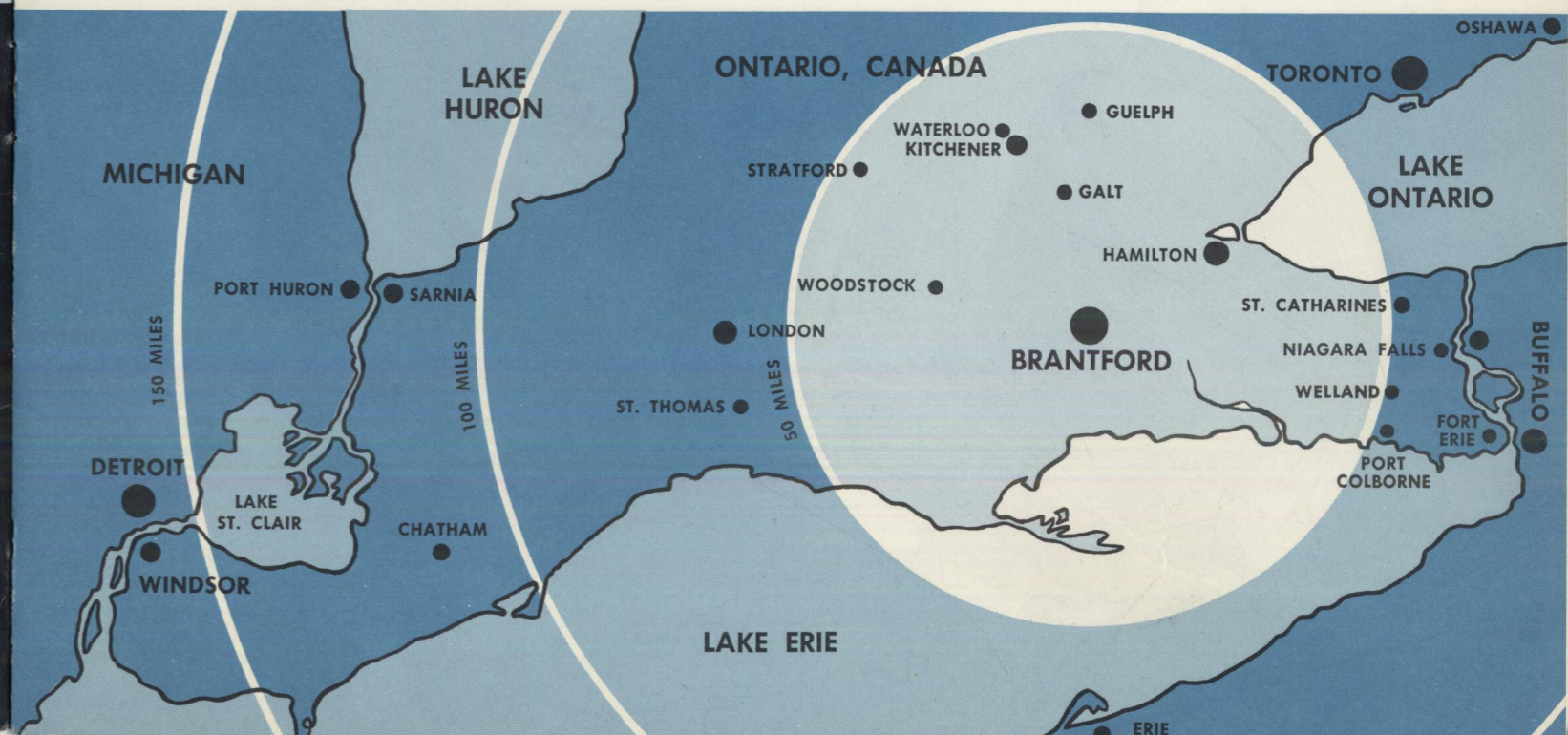
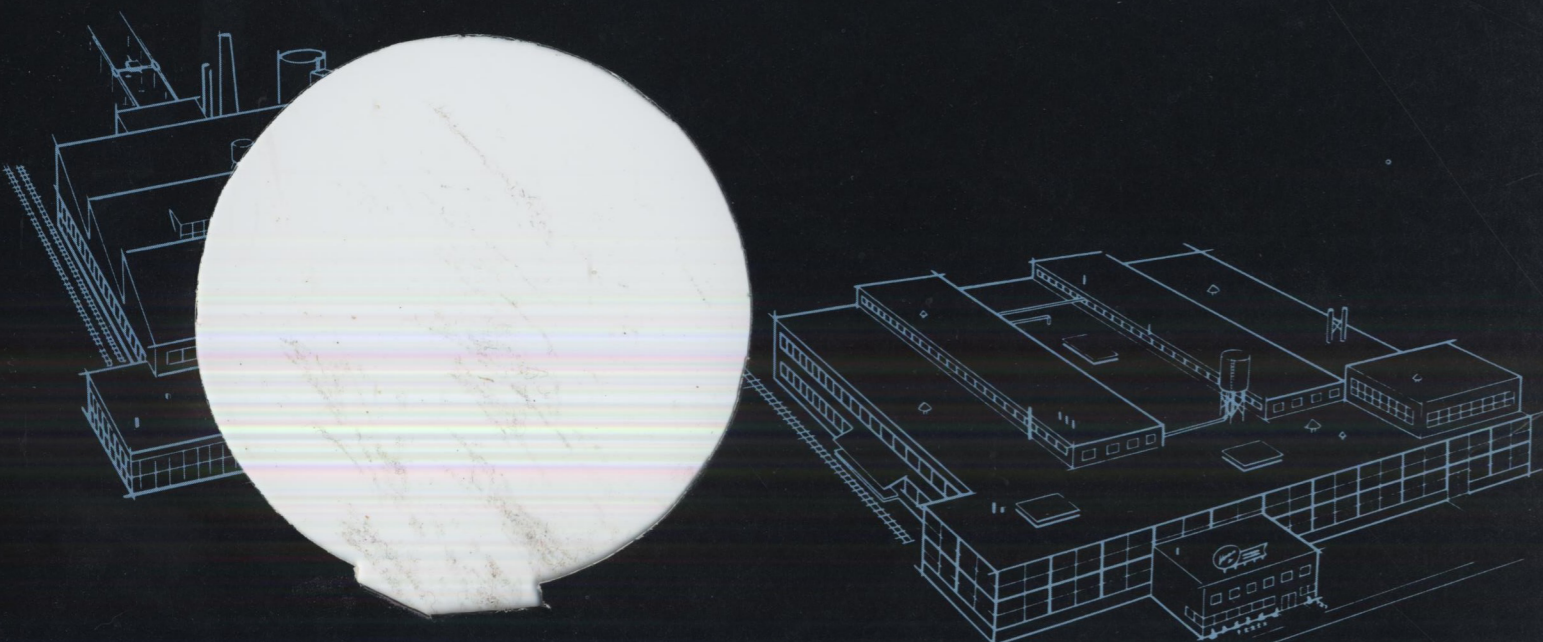
SUMMARY OF EXPANSION OF LOCAL INDUSTRY 1950 - 1959 INCLUSIVE

Year	No. of Sq. Ft.	Amount of Investment	No. of Additional Employees
1950	50 M	\$ 180,000.	40
1951	70 M	240,000.	75
1952	85 M	343,000.	130
1953	109 M	1,005,000.	75
1954	232 M	2,570,000.	445
1955	320 M	1,957,500.	389
1956	175 M	1,820,000.	62
1957	281 M	3,348,000.	290
1958	90 M	2,118,000.	190
1959	271 M	1,892,500.	79

SUMMARY OF NEW INDUSTRIES OBTAINED IN THE BRANTFORD AREA 1950 - 1959 INCLUSIVE

Year	Total New Industries	Amount of Investment	No. of Employees
1950	6	\$ 167,000.	51
1951	4	185,000.	115
1952	6	483,000.	67
1953	4	572,000.	149
1954	4	830,000.	563
1955	6	680,000.	147
1956	8	1,870,000.	148
1957	5	180,000.	43
1958	7	545,000.	135
1959	5	1,460,000.	212

It will be noted from the above tables that the amount of increased investment both in existing industry and new industry has been very significant for the Brantford area. From 4 to 8 new industries have been obtained each year.





“Yes, and the complete transportation facilities available will help us keep our orders on schedule.”

RAILWAYS

Brantford is serviced by the Canadian National Railways, the Canadian Pacific Railway Company through their electrically operated subsidiary, the Lake Erie & Northern Railway, and the Toronto, Hamilton & Buffalo Railway Company. The C.N.R. operates approximately 10 miles of industrial trackage through central Brantford, with storage capacity of 200 cars and full interswitching service. The Lake Erie & Northern Railway operates through Brantford to Galt and Port Dover. Connections at Galt with main line C.P.R., and at Waterford with main line New York Central, Michigan Central Division. The Toronto, Hamilton & Buffalo Railway has two yards in Brantford with capacities for 225 cars, offering full interswitching service and interchange with Lake Erie & Northern and C.N.R. Connects with New York Central at Waterford and Welland, and with C.P.R. at Hamilton. Maintains dock and facilities on Lake Erie at Port Maitland, Ontario.

MOTOR TRANSPORT

28 truck transport companies serve Brantford in classes “A,” “C” and “H.” 6 of these companies are licensed to operate across Canada and into the United States. Two inter-city bus services are also available between Brantford, Hamilton, Guelph, Galt and Simcoe, offering a package express and charter service. Greyhound Bus Lines operate through Brantford for Detroit, Chicago, Toronto and Montreal.

30 MINUTES FROM SEAWAY PORT

Brantford is located within 30 minutes by road and rail from the Port of Hamilton, located at the west end of Lake Ontario and one of the finest natural harbors on the continent. This harbor provides dockage for scores of ships, with water depths reaching 80 feet in mid-harbor and Seaway depth berthing at an ever-increasing number of wharves and terminals. The Port of Hamilton ranks high among Canada’s leading sea-ports in total cargo tonnage handled, and is the principal port serving the Brantford area.

AIRPORT

The Brantford Municipal Airport, located on the immediate outskirts of the city, is equipped with 3 dual asphalt runways, lighted on outside, ranging from 2,600’ to 2,980’ by 100’ wide. 2-way radio communication. This airport is a convenience for industries using their own planes. Aviation gasoline pumps are on the field and qualified mechanics are available for running maintenance and repair. Arrangements for charter flights can be made through the Brant Norfolk Aero Club, which operates the airport for the Brantford Airport Commission.

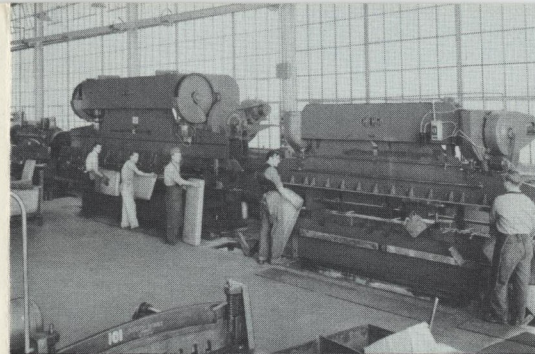
It is a Canadian Custom Port of Entry and prior notification of arrival is all that is needed on flights landing at Brantford from the United States.

SHIPPING CHART

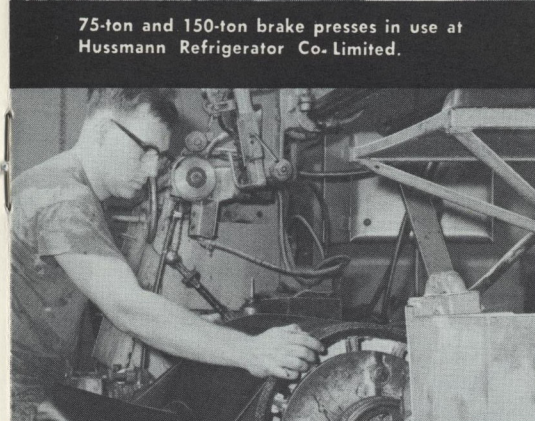
(Days unless otherwise specified)

DESTINATION	RAIL FREIGHT		RAIL EXPRESS	AIR EXPRESS	TRANSPORT
	Carload	Less than CL			
London	1	1	Overnight	—	Overnight
Windsor (Detroit)	1	1	“	—	“
Hamilton	1	1	“	—	“
Toronto	1	1	“	—	“
Montreal	1	1	“	Overnight	“
Quebec	2	2	1	“	1
Moncton	3	3	1	24 hours	2
Halifax	3	3	2	36 hours	4
Winnipeg	3	3	1	Overnight	3
Regina	4	4	2	“	4
Saskatoon	3	3	2	“	4
Calgary	4	4	2	24 hours	5
Edmonton	4	4	3	24 hours	5
Vancouver	5	6	4	24 hours	7

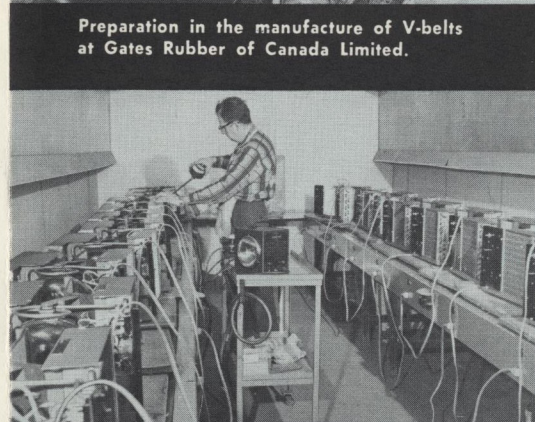
Four forwarding agents are located in Brantford to assist in expediting your shipments.



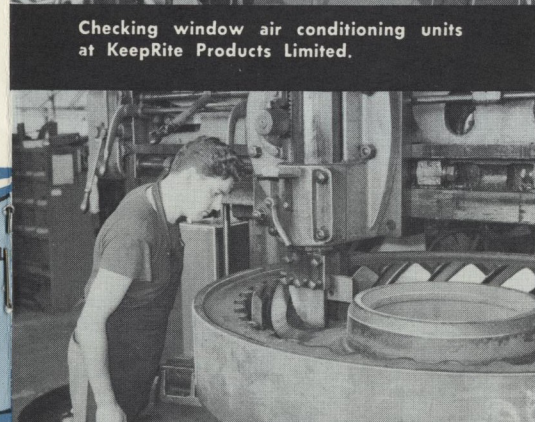
75-ton and 150-ton brake presses in use at Hussmann Refrigerator Co. Limited.



Preparation in the manufacture of V-belts at Gates Rubber of Canada Limited.



Checking window air conditioning units at KeepRite Products Limited.



Tractor tire mold on vertical boring mill at Bridgwater Machine Co. (Canada) Limited.



Golf ball stamping machine at A. G. Spalding & Bros. of Canada Limited.



“There’s no worry about power, water or labor, Bill. There’s an ample supply of all three”

POWER SUPPLY

The Brantford Public Utilities Commission is prepared to supply any quantity of electrical energy, either at 110/220 volts, 120/208 volts, 3 phase, 4 wire, 4,160 volts (which includes 550 volts), 3 phase, 4 wire, or 27.6 kv. Limitations of supply at either of these voltages is generally determined by the initial load of the customer and by anticipated load growth. All power is available at 60 cycles for both commercial and industrial use.

WATER SUPPLY

There is a more than ample water supply as illustrated by the fact that, even in the driest years, there have been no restrictions on the use of water. Supplies are available in the industrial areas under consideration and further quantities can be supplied on request. Special arrangements are made to provide an adequate supply for fire protection purposes to large plants.

ANALYSIS

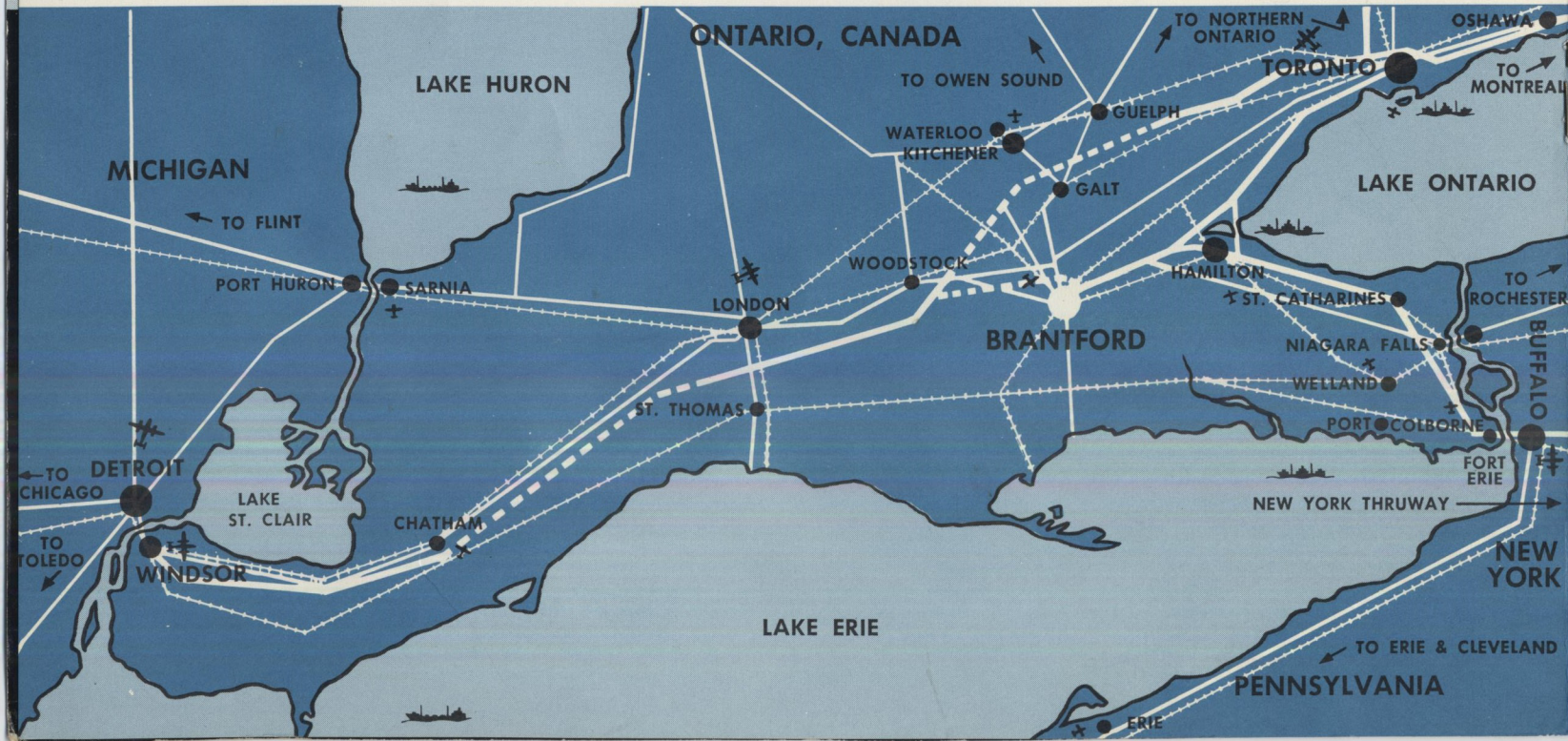
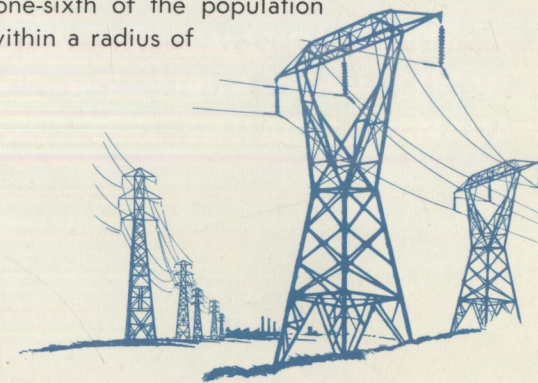
Ph	7.3	Iron	Trace
Turbidity	0.3 to 0.1 ppm	Manganese	None
Dissolved Solids	150 to 525 ppm	Calcium (as CaO)	89 to 110 ppm
	(300 normal)	Mg O	29 to 80 ppm
Total Alkalinity (as CaCO ₃)—	75 to 280 ppm (175 normal)	SO ₄	50 to 70 ppm
Silica	5 ppm	NO ₃ as N	0.4 to 2.5 ppm
Total Hardness	210 to 500 ppm (310 normal)	Organic Nitrogen	0.4 to 1.8 ppm
Color	5 to 10 ppm	Chloramine Residual	0.3 to 0.5 ppm
		Fluorine (as F)	1.0 to 1.2 ppm
		Temperature	32.5 F up to 87.5 F

Present process is: Free residual chlorination, coagulation with aluminum sulphate filtration, dechlorination, post chlorination.

LABOR SUPPLY

The population of greater Brantford is in excess of 56,000 and from this figure can be drawn quality skilled labor at reasonable rates, in addition to semi and unskilled labor.

The City of Brantford has an outstanding record for labor-management relationship, and has an enviable record for the low number of man-hours lost resulting from labor-management disputes. In addition, nearly one-sixth of the population of Canada resides within a radius of 75 miles of the city.





“... and Jim, both our business and our families can benefit from the services Brantford offers.”

EDUCATION

Brantford's educational system is of the highest order, with fully qualified instructors throughout primary and secondary grades. There are four high schools, three combining collegiate and vocational education; 24 primary schools and a business college. 6 universities are within a 75 mile radius of Brantford.

HOSPITALS

Brantford has two modern, fully equipped hospitals offering a total of 759 beds. Both hospitals have a very high rating. In addition, the John Noble Home for the Aged is one of the most modern in Canada.

HOUSING

During recent years, Brantford's expansion has added miles of modern, attractive homes in the suburban areas. New apartment buildings for adults and for families are also available. Ample single accommodation available at any of the modern motels, hotels, YM-YWCA, etc.

FIRE & POLICE PROTECTION

A modern, fully equipped Fire Department is located in the heart of the city, with a sub-station serving the northern area. Fire loss for the city is extremely low. Brantford is regularly and frequently patrolled by a very mobile Police Department, which works closely with plant watchmen and security guards. Payroll escorts are supplied at no charge. The Ontario Provincial Police maintain a detachment to police township and county areas. All commercial buildings are checked regularly.

LIBRARY

The Brantford Public Library, supported by grants, offers a wide range of books, long-playing records, films, children's library, "shut-in" service, and a continuing art display.

CHURCHES

Brantford has churches of all denominations: 27 Protestant; 3 Roman Catholic; 1 Synagogue; 1 Mormon; 5 other sects and the Brantford Citadel Corps of the Salvation Army.

BUSINESS & SERVICE CLUBS

There are 33 business and service clubs in Brantford, including 7 women's organizations, Advertising & Sales Club, Shriners' Club, Zonta Club, etc.

RECREATION

Playground, swimming pool and skating rinks are supervised by the Brantford Recreation Commission. Attractive picnic areas, 4 watered golf courses, playing fields and curling rink are also available. Glenhyrst Gardens, a cultural centre operated by the Brantford Arts Council, is devoted to art, photography, theatre, horticulture, etc. Fishing, swimming and boating areas within easy reach. Minutes from miles of fresh water beaches and winter sports activities.

NEWSPAPER, RADIO & TV

The Brantford Expositor serves Brantford and area with a daily newspaper. Also representatives of 5 metropolitan dailies reside in the city. Radio Station CKPC, 10,000 watts, gives local coverage and is affiliated with the Canadian Broadcasting Corporation. Two television stations serving the area have local representatives.

ENGINEERS & ARCHITECTS

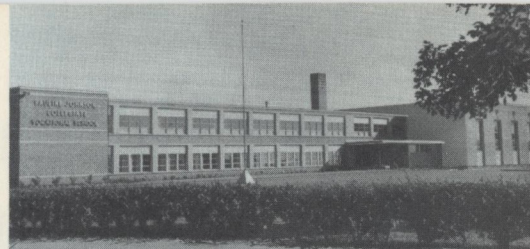
Five consulting engineering firms, five professional engineering and five architectural firms are in the city, offering a complete range of services.

ADVERTISING AGENCY

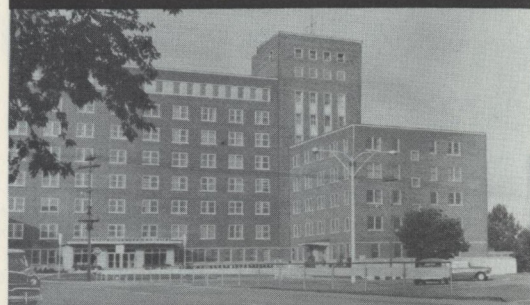
Brantford has a recognized advertising agency offering a complete advertising service including: Planning and production of trade and consumer publication advertising; catalogues; direct mail; package and label design; artwork; photo retouching, etc.

COMMUNITY CHEST

The City Welfare and Community Chest, similar to the United Fund, is exceptionally well supported. Brantford leads other Canadian cities in reaching their quota.



Pauline Johnson Collegiate, one of Brantford's three high schools.



One of Brantford's two modern, efficient hospitals.



(Top) Fire Department Headquarters. (Lower) Brantford's Police Headquarters.



Lion's Park Swimming Pool, one of the largest in Canada.

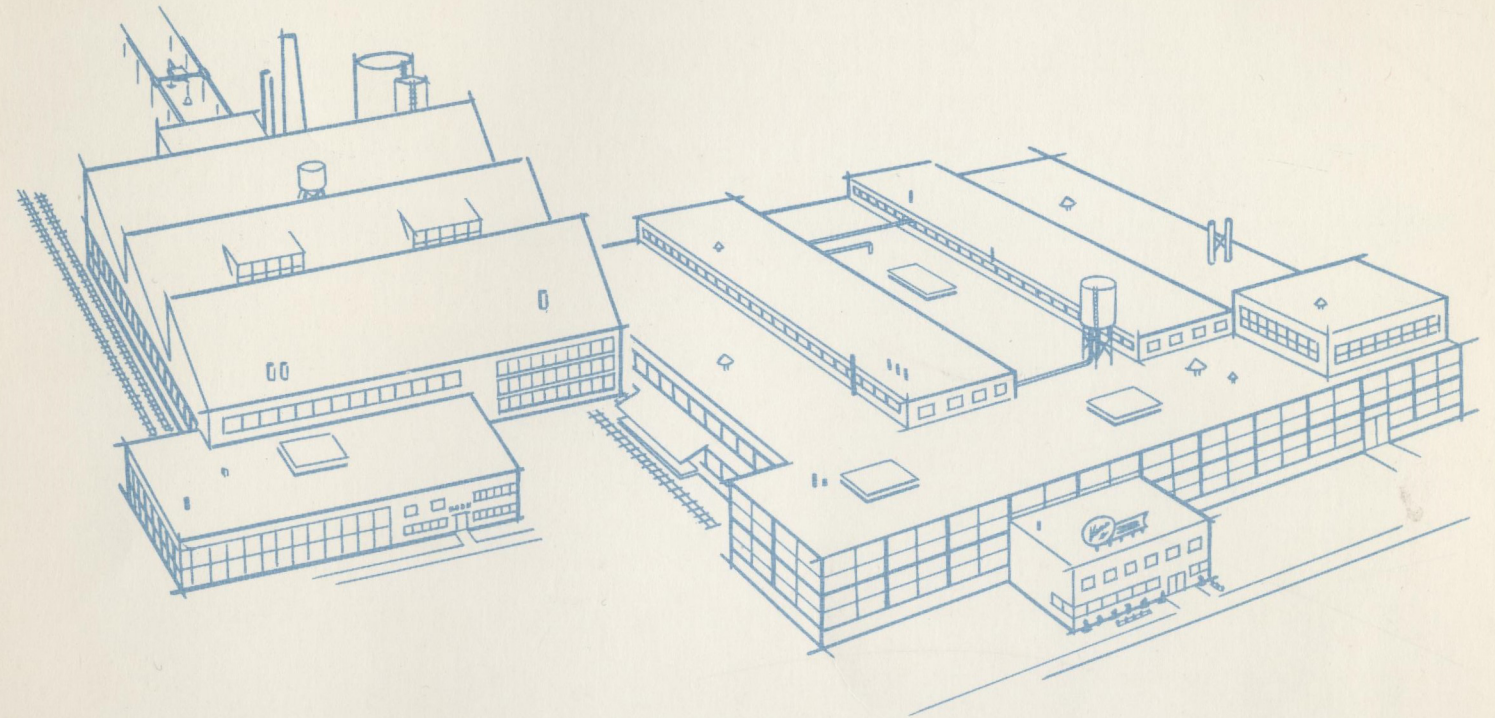


Picturesque Glenhyrst Gardens, open to the public the year 'round.



Brantford branch of the YM-YWCA, showing recent expansion of accommodation.

Brantford, a city of industry!



We know you'll like Brantford... its location, facilities and culture.

People like to settle where things are happening. Here is an educational system of the highest order. Here are diversified occupations and industries. Here is a secure environment for capital investment. We are the heart of Canada's domestic market.

FOR ADDITIONAL INFORMATION WRITE:
THE BRANTFORD INDUSTRIAL COMMISSION,
CITY HALL, BRANTFORD, ONTARIO, CANADA

Proof of Progress...

SHOWN BELOW ARE SOME DEVELOPMENTS IN BRANTFORD'S INDUSTRIAL PICTURE, INDICATING THE ESTABLISHMENT OF NEW INDUSTRIES AND THE CONTINUING GROWTH OF COMPANIES LOCATED IN THIS PROGRESSIVE CITY.

HUSSMANN REFRIGERATOR CO. LIMITED



BELL CITY FOUNDRY (BRANTFORD) LIMITED



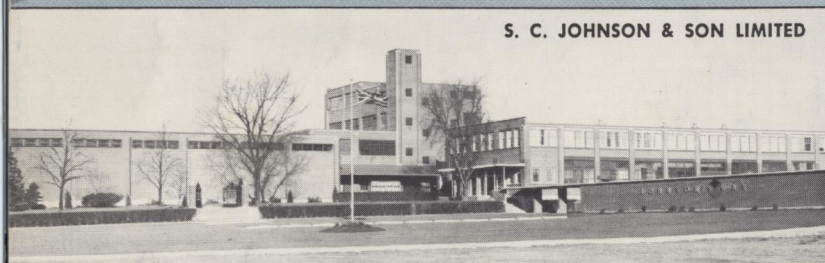
THE STEEL COMPANY OF CANADA LIMITED



LADISH COMPANY OF CANADA LIMITED



S. C. JOHNSON & SON LIMITED



FIBRE PRODUCTS OF CANADA LIMITED



CHICAGO RAWHIDE PRODUCTS CANADA LIMITED



A. G. SPALDING & BROS. OF CANADA LIMITED

