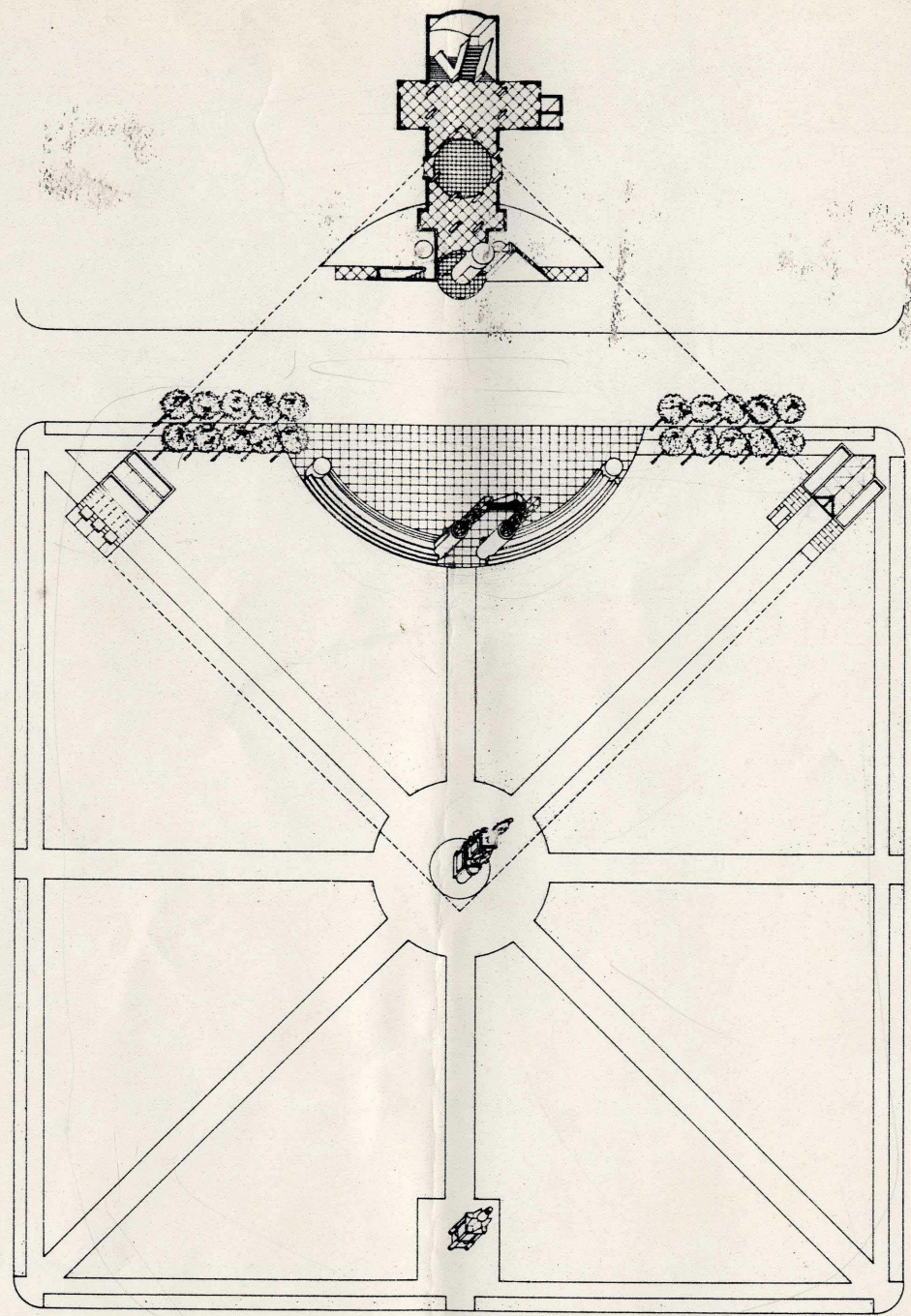


BRANTFORD CENTRAL LIBRARY
CROSS SECTIONS

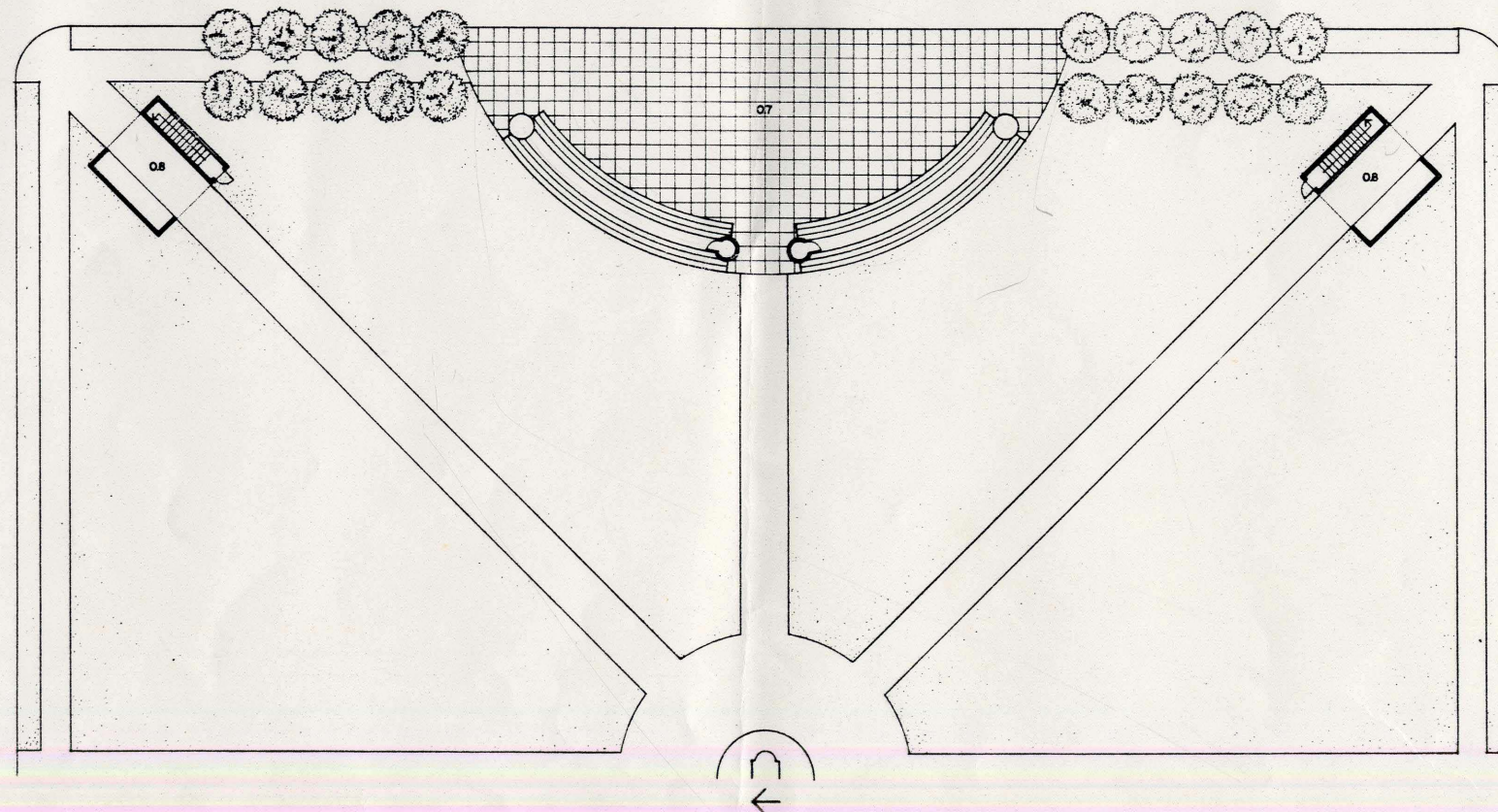
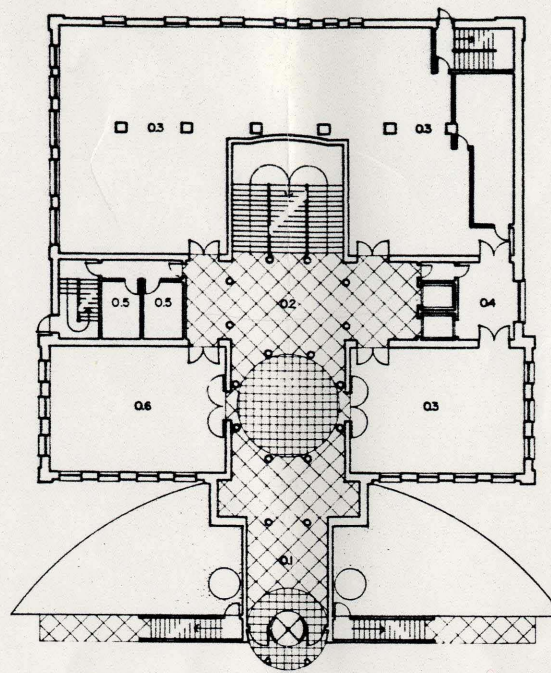


BRANTFORD CENTRAL LIBRARY THE ENTRANCE FROM THE PARK

VICTORIA PARK IS BRANTFORD'S FINEST URBAN SPACE. IT IS THE SETTING FOR IMPORTANT BUILDINGS AND THE CENTRAL LIBRARY IS CRITICAL TO THE QUALITY OF THIS PLACE. THE DESIGN PROBLEM IS TO EXPAND THE CENTRAL LIBRARY IN A MANNER WHICH IS SYMPATHETIC TO THE EXISTING NEO-CLASSICAL BUILDING WITHOUT HAVING A NEGATIVE EFFECT ON EITHER THE PARK OR THE BUILDING.

THE DESIGN IS INFORMED BY THE GEOMETRY OF THE PARK AND THE CLASSICAL ORDER OF THE EXISTING LIBRARY. VISUAL CHANGES TO THE STREETSCAPE REINFORCE THE AXIAL ORDER OF THE PARK AND THE NEW PAVILIONS PROVIDE BOTH SHELTER AND EMERGENCY EXIT FROM THE BELOW GROUND LIBRARY. A PUBLIC SPACE IS CREATED FOR CIVIC FUNCTIONS BY CONNECTING THE LIBRARY PORTICO TO A PAVED SEMI-CIRCULAR AREA AT THE EDGE OF THE PARK.

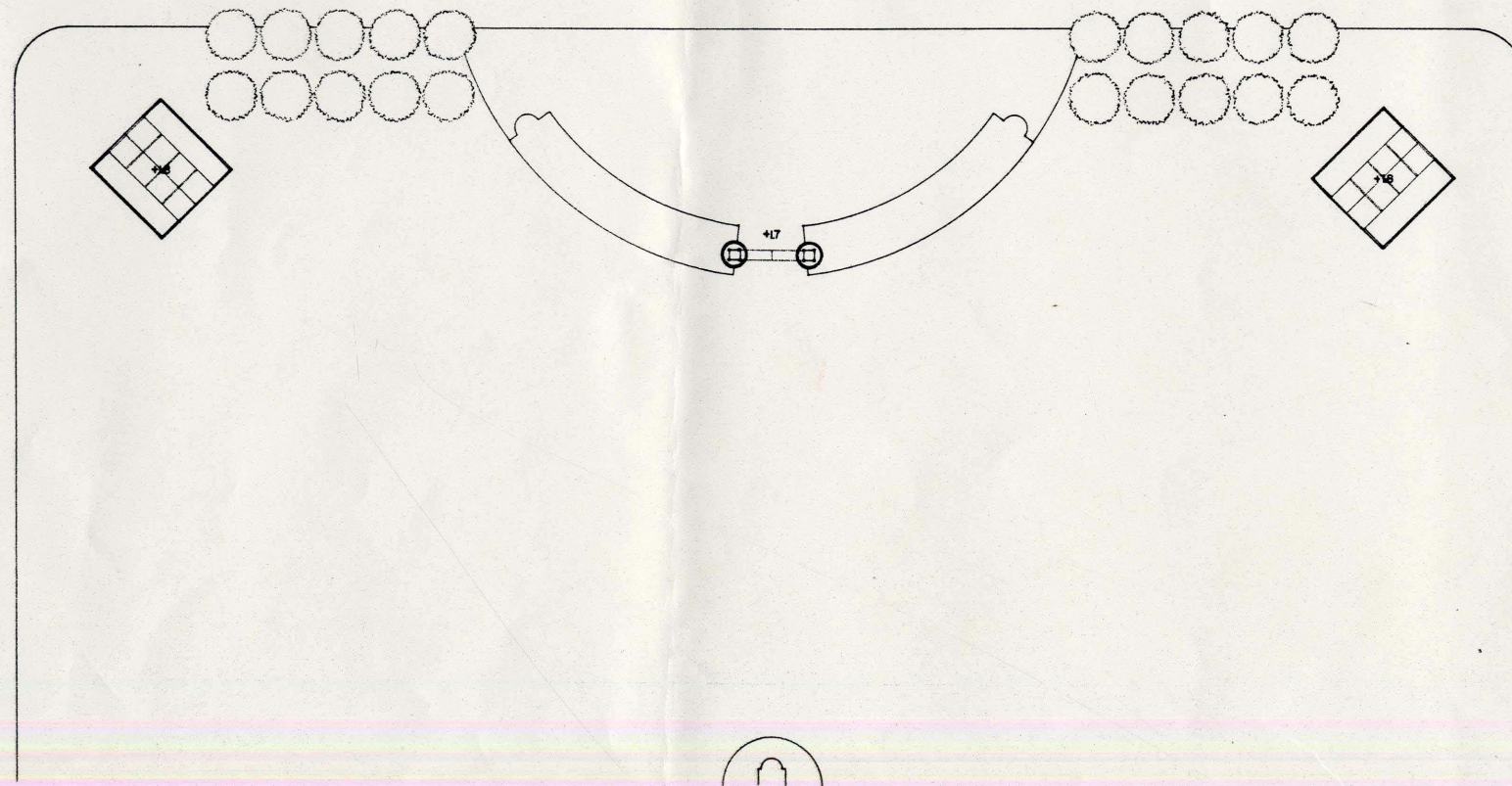
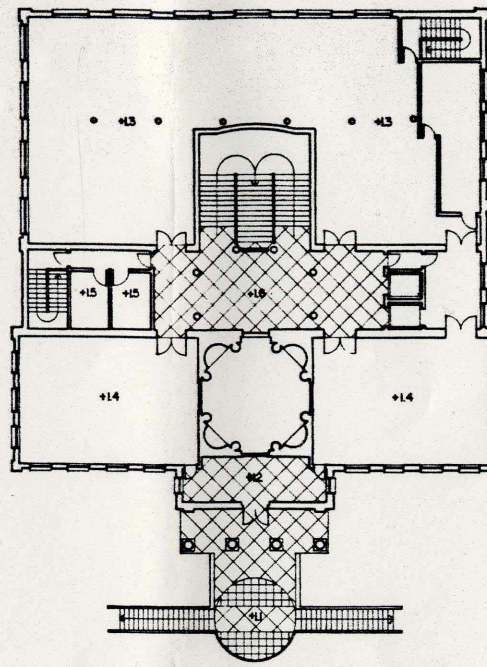
THIS PROPOSAL SHOWS HOW THE CENTRAL LIBRARY CAN BE EXPANDED AT ITS PRESENT LOCATION. THE ARCHITECTURAL IDEA IS IN SYMPATHY WITH THE PARK AND THE EXISTING LIBRARY BUILDING AND AT THE SAME TIME, A NEW CIVIC SPACE IS CREATED.



BRANTFORD CENTRAL LIBRARY
GROUND FLOOR PLAN

8,700 SQUARE FEET

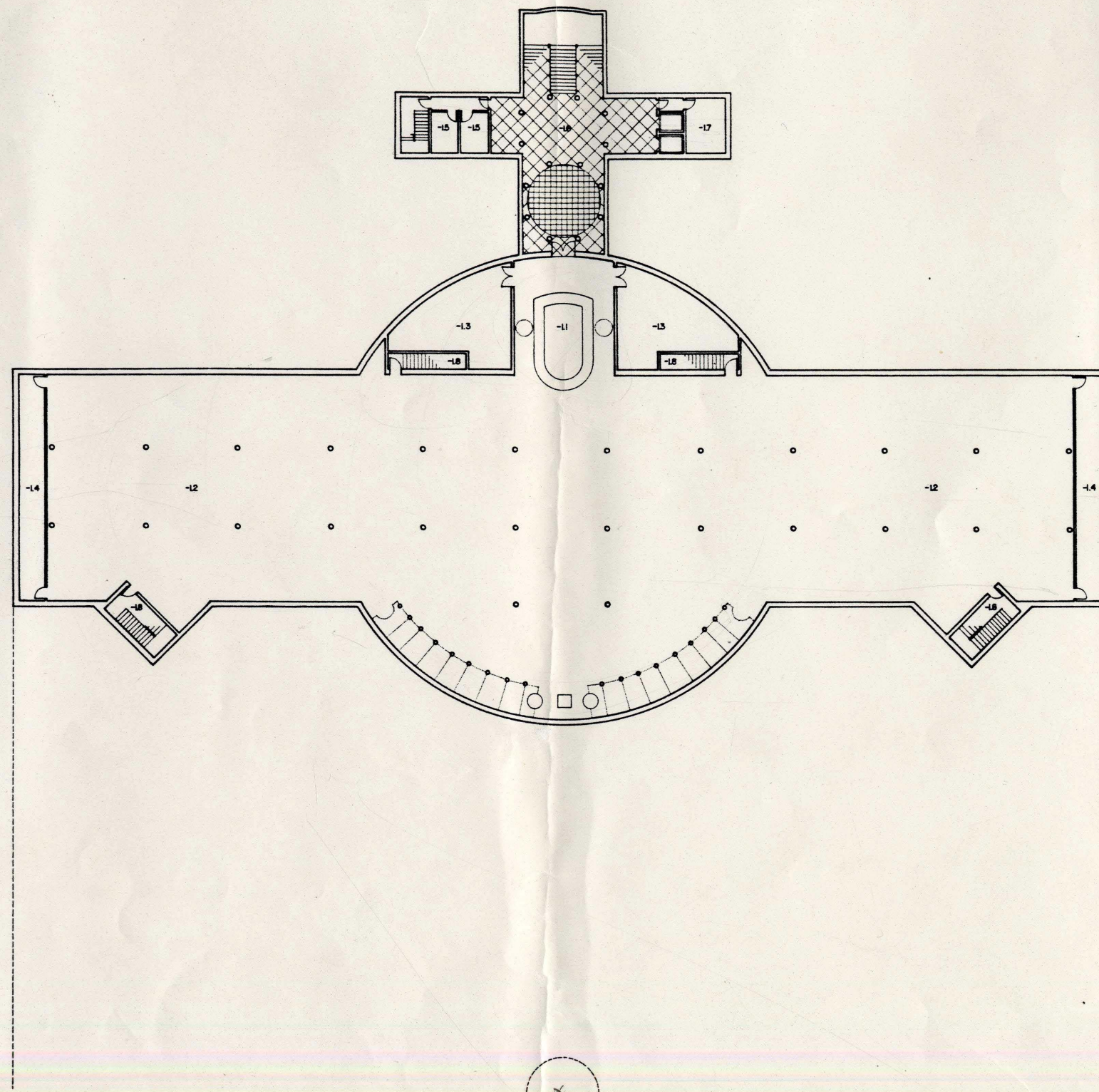
- 0.1 MAIN ENTRANCE
- 0.2 ELEVATOR/ STAIR FOYER
- 0.3 OFFICE
- 0.4 SERVICE ENTRANCE
- 0.5 WASH-ROOM
- 0.6 PROGRAM ROOM
- 0.7 PUBLIC PIAZZA
- 0.8 PAVILION



BRANTFORD CENTRAL LIBRARY
UPPER FLOOR PLAN

8,250 SQUARE FEET

- +1.1 ROSTRUM
- +1.2 FOYER
- +1.3 OFFICES & WORKSPACE
- +1.4 MEETING ROOM
- +1.5 WASHROOM
- +1.6 ELEVATOR/ STAIR FOYER
- +1.7 ARCH
- +1.8 PAVILION



BRANTFORD CENTRAL LIBRARY

LOWER FLOOR PLAN

26,643 SQUARE FEET

- 1.1 CONTROL CENTRE
- 1.2 LIBRARY ROOM
- 1.3 SUPPORT SERVICES
- 1.4 STORAGE
- 1.5 WASHROOM
- 1.6 ELEVATOR/ STAIR FOYER
- 1.7 MACHINE ROOM
- 1.8 EMERGENCY EXIT