

1977

MAKE YOUR OWN ASSESSMENT OF

# Brantford

HERE ARE THE

# facts



**Local History**

Desk Reference  
381  
Bra. c 1 1977

**BRANTFORD INDUSTRIAL COMMISSION**  
CITY HALL / BRANTFORD, ONTARIO, CANADA



BRANTFORD  
PUBLIC LIBRARY

REFERENCE

to be read in Library only

Class No.       V

# Industrial Development Data

## TABLE OF CONTENTS

<u>ITEM</u>	<u>SECTION</u>
LOCATION	1
CLIMATE	2
POPULATION	3
MUNICIPAL ADMINISTRATION & FINANCES	4
MUNICIPAL TAXES	5
MUNICIPAL SERVICES	6
Police	
Fire Protection	
Streets and Roads	
Water	
Sewage	
Garbage - Industrial & Commercial waste	
POWER SOURCES	7
Hydro	
Gas	
Fuel Oil	
FINANCIAL DATA	8
TRANSPORTATION FACILITIES	9
Railways	
Air Services	
Customs	
CIVIC DATA - General, Housing, Education, Recreation	10
LABOUR	11
INDUSTRIAL DEVELOPMENT	12
INDUSTRIAL LANDS AVAILABLE	12

*S.R.*  
*Best Reference*  
*381*  
*Bra*  
*e1 - 1977*

BRANTFORD PUBLIC LIBRARY  
MAY - 1977

THE BRANTFORD DEVELOPMENT COMMISSION

City Hall

BRANTFORD, ONTARIO, CANADA

# Industrial Development Data

LOCATION

SECTION 1

## GENERAL

The City of Brantford, Ontario is centrally located in Canada's most concentrated industrial area which surrounds the westerly end of Lake Ontario. Served by #2, #24, #53 and #54 Provincial Highways, Brantford is directly on #403 Highway, which will eventually project the Queen Elizabeth Way at Hamilton to the east and #401 Highway at Woodstock to the west.

### Road Miles - Brantford to:

Galt	17	St. Thomas	74
Hamilton	24	Buffalo	90
Kitchener	26	Oshawa	97
Guelph	31	Owen Sound	113
Oakville	42	Windsor	170
London	57	Detroit	171
St. Catharines	60	North Bay	270
Toronto	65	Ottawa	317
Niagara Falls	68	Montreal	405

### 30 Minutes from Seaway Port

Brantford is within 30 minutes by road and rail from the seaway port of Hamilton on Lake Ontario. This harbour provides seaway depth berthing at an ever-increasing number of wharves and terminals. The Port of Hamilton ranks high among Canada's leading seaports in total cargo tonnage handled.

### General Statistics

Elevation above sea level - 702 feet  
Longitude at City Hall - 80°15' 45"W  
Latitude at City Hall - 43°8' 26"N  
Incorporated as a Town - 1847  
Incorporated as a City - 1877  
1975 Population - 68,750\*

\* City of Brantford Planning Dept., January 1, 1976

THE BRANTFORD DEVELOPMENT COMMISSION

City Hall

BRANTFORD, ONTARIO, CANADA

# Industrial Development Data

## CLIMATE

## SECTION 2

### CLIMATE (1975)

Annual Snowfall	60.1	inches
Annual Rainfall	31.83	"
Highest Recorded Temperature	93°	
Lowest Recorded Temperature	-6°	
Annual Mean Maximum Temperature	55.2°	
Annual Mean Minimum Temperature	39.7°	

### EXTREMES IN PRECIPITATION

Most rain in one month	August	5.26	inches
Most rain in one day	September 18	1.61	"
Most rain in shortest time	(September 18)	1.95	"
	(September 20)	1.95	"
Driest month	October	1.21	"
Most snow in one month	December	19.5	"
Most snow in one day	March 7	6.60	"

### EXTREMES IN TEMPERATURE

Hottest recorded	93° July 31 ) August 1)
Coldest recorded	-6° December 22

### PRECIPITATION & TEMPERATURE MAXIMUM/MINIMUM

<u>MONTH</u>	<u>MAX TEMP °F</u>	<u>MIN TEMP °F</u>	<u>RAIN (")</u>	<u>SNOW (")</u>
January	53	-3	2.11	4.2
February	49	0	1.40	16.2
March	51	0	2.17	12.5
April	69	18	0.71	5.0
May	89	38	2.48	
June	89	47	2.81	
July	93	46	4.21	
August	93	46	5.26	
September	75	36	4.18	
October	74	23	1.93	
November	70	23	2.69	2.7
December	59	-6	1.88	19.5

N.B. 1 inch of rain = 10 inches of snow

THE BRANTFORD DEVELOPMENT COMMISSION

City Hall

BRANTFORD, ONTARIO, CANADA

## Industrial Development Data

### POPULATION

### SECTION 3

<u>YEAR</u>	<u>POPULATION</u>	<u>YEAR</u>	<u>POPULATION</u>
1847	3,000	1930	30,103
1850	3,200	1940	31,135
1870	7,000	1950	36,532
1880	10,688	1960	54,093
1890	14,280	1970	60,704*
1900	16,216	1974	64,421**
1910	20,711	1975	68,750***
1920	30,549		

\* Source: Provincial Assessment Dept.

\*\* Statistics Canada

\*\*\* City of Brantford Planning Dept., Jan. 1, 1976

### CENSUS CANADA

#### Population by Mother Tongue (1971)

### AVERAGE WEEKLY WAGES

#### IN THE INDUSTRIAL COMPOSITE (A)

		<u>1973</u>	<u>1974</u>	<u>1975</u>	
British	45,140				
French	2,395				
German	3,270	BRANTFORD	150.08	167.26	191.01*
Italian	2,570	ONTARIO	165.54	184.13	208.08*
Netherlands	1,665	CANADA	160.97	181.73	206.38*
Polish	2,505				
Scandinavian	315				
Ukrainian	1,735				
Native Indian	460				
Other	4,375				

\* Average as of August, 1975

(A) Source: Statistics Canada - Employment Earnings and Hours, October, 1975

THE BRANTFORD DEVELOPMENT COMMISSION

City Hall

BRANTFORD, ONTARIO, CANADA

# Industrial Development Data

SECTION 3

POPULATION

POPULATION BREAKDOWN

The following is a population breakdown for the years 1966 to 1976 inclusive, with the percentage figure which each group relates to the total for that particular year:

	<u>AGE 0-8</u>	<u>AGE 9-15</u>	<u>AGE 16-19</u>	<u>AGE 20-65</u>	<u>AGE 66 &amp; OVER</u>	<u>TOTAL ALL AGES</u>
1976	9,113	8,391	4,919	37,486	7,021	66,930*
PERCENTAGE	13.61	12.54	7.35	56.01	10.49	
1975	8,722	8,378	4,768	35,849	7,407	65,124
PERCENTAGE	13.39	12.86	7.32	55.05	11.37	
1974	8,493	8,526	4,695	34,562	7,311	63,587
PERCENTAGE	13.36	13.41	7.38	54.35	11.50	
1973	7,604	8,258	4,662	34,057	6,864	61,445
PERCENTAGE	12.37	13.44	7.58	55.42	11.17	
1972	8,962	8,266	4,798	33,910	6,756	62,692
PERCENTAGE	14.29	13.18	7.65	54.08	10.77	
1971	8,691	8,192	4,560	33,738	6,511	61,692
PERCENTAGE	14.08	13.27	7.39	54.68	10.55	
	<u>AGE 0-9</u>	<u>AGE 10-15</u>	<u>AGE 16-19</u>	<u>AGE 20-64</u>	<u>AGE 65 &amp; OVER</u>	<u>TOTAL ALL AGES</u>
1970	10,661	6,248	4,262	32,232	7,301	60,704
PERCENTAGE	17.56	10.29	7.02	53.09	12.02	
1969	11,320	7,318	4,409	32,525	6,406	61,978
PERCENTAGE	18.26	11.80	7.11	52.47	10.33	
1968	11,544	7,182	4,298	31,645	6,339	61,008
PERCENTAGE	18.92	11.77	7.04	51.87	10.39	
1967	11,625	7,012	4,182	30,873	6,317	60,009
PERCENTAGE	19.37	11.68	6.97	51.44	10.53	
1966	11,659	6,824	4,345	30,082	6,071	58,981
PERCENTAGE	19.77	11.57	7.36	51.00	10.30	

\*Information from Provincial Assessment Records

PERCENTAGE INCREASE IN POPULATION

1966-1976	8.81%
1971-1976	9.22%

THE BRANTFORD DEVELOPMENT COMMISSION

City Hall

BRANTFORD, ONTARIO, CANADA

# Industrial Development Data

## POPULATION

## SECTION 3

### BRANTFORD TRADING AREA

Cities, Towns and Townships

<u>COMMUNITY</u>	<u>DISTANCE</u>	<u>POPULATION (1)</u>
Brantford	---	65,124
Paris	7 miles	6,364
Simcoe	24 "	13,874
Township of Brantford	---	9,117
" " South Dumfries	10 "	3,974
" " Oakland	8 "	1,322
" " Onondaga	10 "	1,348
" " Burford	9 "	5,691
" " Delhi *	25 "	14,619
" " Norfolk *	20 "	11,095
	TOTAL	<u>132,528</u>

(1) Taken from 1976 Provincial  
Municipal Directory

\* Townships and Towns in the Regional Municipality of  
Haldimand-Norfolk under our market influence and  
labour pool.

--- Distances of the Townships are based on an approximate  
centre to centre measurement between the Townships  
concerned and the City of Brantford.

THE BRANTFORD DEVELOPMENT COMMISSION

City Hall

BRANTFORD, ONTARIO, CANADA



# **Industrial Development Data**

## MUNICIPAL ADMINISTRATION & FINANCES

## SECTION 4

The City Council, Public Utilities Commission, Brant County Board of Education and the Brant County Separate School Board are the elected bodies. City Council is the senior body.

### CITY COUNCIL

is composed of the Mayor and ten Aldermen. The City is divided into 5 Wards with 2 Aldermen representing each Ward.

### THE PUBLIC UTILITIES COMMISSION

is composed of 1 Commissioner from each Ward plus the Mayor by virtue of office. The P.U.C. is responsible for providing water, hydro and inter-urban bus transportation. The Chairman is elected by the Board.

### THE BRANT COUNTY BOARD OF EDUCATION

is composed of 14 trustees elected on a County-wide basis plus 2 appointed representatives from the Brant County Separate School Board (vote only on secondary school matters). The Chairman is elected by the Board annually.

### THE BRANT COUNTY SEPARATE SCHOOL BOARD

is composed of 12 trustees elected on a County-wide basis - elementary and secondary education.

### ELECTIONS AND TERM OF OFFICE

Elections are held on the first Monday of December every other year.

### OUTSIDE BOARDS AND COMMISSIONS (APPOINTED)

Brantford Police Commission  
Board of Park Management and Recreation Commission  
Glenhyrst Gardens Commission  
Brantford Development Commission  
Brantford Public Library Board  
Brantford Planning Board  
Committee of Adjustment  
Brant County Board of Health  
Board of Governors John Noble Home  
Brantford Suburban Roads Commission  
Brant Sanatorium Board  
Brantford Airport Commission  
Landlord and Tenant Advisory Bureau  
Civic Centre Committee  
Land Assembly & Development Committee  
Property Standards Committee  
Art Gallery of Brant  
Arts Complex Committee  
Brantford Centennial Committee  
Downtown Steering Committee

## **THE BRANTFORD DEVELOPMENT COMMISSION**

City Hall

BRANTFORD, ONTARIO, CANADA

# Industrial Development Data

## MUNICIPAL ADMINISTRATION & FINANCES

## SECTION 4

<u>DEBENTURE DEBT</u>	<u>1976</u>	<u>1975</u>
PAYABLE FROM GENERAL TAXATION		
General	\$ 6,734,158.32	\$ 7,192,165.81
Schools	<u>2,598,988.39</u>	<u>2,885,463.20</u>
	<u>\$ 9,333,146.71</u>	<u>\$ 10,077,629.01</u>
PAYABLE BY PUBLIC UTILITIES		
Water	\$ 840,000.00	\$ 941,250.00
Hydro	142,000.00	154,000.00
Transportation	438,457.19	452,776.18
RATEPAYERS' SHARE LOCAL IMPROVEMENTS	1,840,412.15	1,894,984.12
PAYABLE FROM PARKING REVENUE	<u>180,000.00</u>	<u>200,000.00</u>
TOTAL DEBENTURE DEBT (ISSUED BY THE CITY)	<u>\$ 12,774,016.05</u>	<u>\$ 13,720,639.31</u>

### PER CAPITA COMPARISONS

	<u>1976</u>	<u>1975</u>
Population	66,930*	65,124*
Gross debenture debt	\$ 190.85	\$ 210.68
Net taxable debt	139.45	154.75
Taxable assessment	179,262,919.00	169,018,255.00
Tax levy	259.31	246.59
Tax arrears (previous year)	13.20	13.75

\*Source: Provincial Assessment Department

THE BRANTFORD DEVELOPMENT COMMISSION

City Hall

BRANTFORD, ONTARIO, CANADA

# Industrial Development Data

## MUNICIPAL TAXES

SECTION 5

### INDUSTRIAL TAXES IN BRANTFORD, ONTARIO

Taxes levied by the Municipality apply to:

1. Land
2. Buildings
3. Business Tax

### LAND ASSESSMENT based upon:

1. Location and services
2. Use of property
3. Other criteria which require the professional estimate of a trained assessment officer

Assessments cannot be expressed accurately as a percentage of the market price since the evaluation standards of the assessment officers do not necessarily coincide with those of realtors. The acreage upon which a building is constructed and the property utilized immediately will be assessed at a higher rate than the unimproved acreage held for future expansion. Each parcel of industrial land, therefore, will be assessed by the same standard for each industry, but will vary according to the percentage of the property improved by construction and use.

### BUILDING ASSESSMENT

It is based upon 1945 normal construction costs. In order for us to estimate the assessment of a proposed industrial building, it is necessary to see the specifications. Estimated costs by construction firms cannot be used since there are variations in these estimates.

### BUSINESS TAX

In all Ontario Communities, including Brantford, a business tax is applied to all manufacturing industries at a rate of 60%. (This is statutory).

### 1976 MILL RATE

The mill rate for commercial and industrial properties in Brantford in 1976 is 104.96 mills. This applies in the calculation of land, building and business tax. We will provide an estimate of municipal taxes when the acreage of property and building specifications are provided by any interested Company.

THE BRANTFORD DEVELOPMENT COMMISSION

City Hall

BRANTFORD, ONTARIO, CANADA

# Industrial Development Data

## MUNICIPAL TAXES

## SECTION 5

### INDUSTRIAL TAXES IN BRANTFORD (cont'd)

#### SAMPLE ONLY

Land 10 acres - Assessment	\$ 16,250.
3 acres - Assessment @ \$2,500 per acre	
7 acres - Assessment @ \$1,250 " "	
Building - 40,000 sq. ft. + office - Assessment	\$ 117,730.
(Note: Estimated cost of building - \$320,000.)	
Land Tax: 7 acres @ 91.33* mills.....	\$ 799.14
3 acres @ 104.96** " .....	787.20
Building tax @ 104.96 mills.....	<u>12,356.94</u>
Total - land + building.....	\$ 13,943.28
Business tax - 60% of tax on 3 acres of land + tax on total buildings.....	\$ <u>7,886.48</u>
TOTAL TAX.....	<u><u>\$ 21,829.76</u></u>

\* 1976 residential mill rate

\*\* 1976 industrial/commercial mill rate

THE BRANTFORD DEVELOPMENT COMMISSION

City Hall

BRANTFORD, ONTARIO, CANADA

POLICE

A staff of 106 Police Officers and 24 Civilians, under a Chief of Police, comprise the Brantford Police Force.

A fleet of vehicles patrol the City area regularly, and all Police Officers are equipped with radios.

In addition to routine patrols, the Department is prepared to:

- Accept, check telephone calls from plant watchmen and to make an immediate personal investigation should a call not be received on time.
- Escort payrolls from bank to plant or sums of money from plant to bank at no charge.
- Co-operate fully with security guards on company investigations if requested to do so.
- Make surveys on traffic conditions and make recommendations to the Traffic Committee for improvements in traffic safety or traffic flow in any area.
- Train and administer an Auxiliary Police Force under the E.M.O. for local or national emergency.
- Train and maintain adult school crossing guards and juvenile school patrols.

FIRE PROTECTION

The staff consists of a Chief, Deputy Chief, Secretary, 4 Control Room Operators, Fire Prevention Officer, 3 Fire Inspectors, 1 Training Officer, 4 Captains, 12 Lieutenants, 1 Motor Mechanic and 85 full-time Fire Fighters.

EQUIPMENT:

- 1 - 1944 LaFrance Aerial Ladder Truck - 85 Ft. Aerial
- 1 - 1961 King Seagrave Aerial Ladder Truck - 100 Ft. Aerial
- 1 - 1949 Bickle Seagrave Pumper, 750 G.P.M. Class "A"
- 1 - 1955 King Seagrave Pumper, 840 G.P.M. Class "A"
- 1 - 1965 Ford Van Rescue Truck
- 1 - 1959 King Seagrave Pumper, 1050 G.P.M. Class "A"
- 1 - 1965 King Seagrave Pumper, 1050 G.P.M. Class "A"
- 1 - 1970 King Seagrave Pumper, 840 G.P.M. Class "A"
- 1 - 1976 King Seagrave Platform Pumper
- 1 - 1971 G.M.C. Pick-up (Service Truck)
- 1 - 1969 Dodge Polara Sedan (Deputy Chief's Car)
- 1 - 1972 Chevrolet Sedan (Chief's Car)
- 1 - 1968 Chevy II Sedan
- 3 - 1976 Plymouth Dusters - Inspection Bureau
- 1 - 1973 Dodge Maxivan Ambulance (Ont. Hospital owned)
- 1 - 1972 Ford Econoline Ambulance (Ont. Hospital owned)
- 1 - 1975 Dodge Maxivan Ambulance (Ont. Hospital owned)
- 1 - 15 Foot Fibre Glass Boat C/W Trailer and 5 H.P. Motor
- 1 - 16 Foot Aluminum Boat C/W Trailer and 16 H.P. Motor

All equipment, including the ambulances, are equipped with two-way short wave radio. The pumps on the fire equipment are of the most modern large capacity centrifugal design. The trucks are also equipped with modern nozzles and fire fighting chemicals. Added to the central fire station in 1968 was a training building.

Co-operation is extended to all industrial plants where management requests fire protection instruction. Many industrial plant fire brigades have been organized and trained, and films shown to personnel on fire safety and the operation of fire extinguishers. This service is available to all our industries.

# Industrial Development Data

## MUNICIPAL SERVICES

## SECTION 6

### STREETS AND ROADS

#### STREET MILEAGE AS OF DECEMBER 31

<u>PAVEMENT TYPE</u>	<u>1972</u>	<u>1973</u>	<u>1974</u>	<u>1975</u>
1. Concrete Surface	15.4	15.4	15.1	14.6
2. Bituminous Surface				
- concrete base	9.1	8.7	8.0	8.3
3. High cost Flexible*	81.8	88.1	99.3	107.7
4. Low cost Bituminous	43.4	42.3	41.4	39.8
5. Surface treated Gravel	29.2	26.2	24.2	23.2
6. Surface untreated Gravel	<u>1.8</u>	<u>1.8</u>	<u>3.0</u>	<u>1.8</u>
	180.7	182.5	191.0	195.4

\*HMST included

### PARKING FACILITIES

The City of Brantford has 1106 off-street parking spaces and 711 on-street parking spaces available in the downtown district.

### WATER

The City of Brantford obtains its water supply from the Grand River and is assured of an abundant supply throughout the entire year. The capacity of our existing system is 15,000,000 G.P.D. Consumption of water at normal periods is around 8 million G.P.D. peaking to 12 million G.P.D. The treatment process consists of free residual chlorination, aeration, dechlorination, activated carbon for taste and odour control, coagulation and settling using aluminum sulphate and activated silica, Ph control using calcium hydrate, filtration, fluoridation and post treatment of chlorine residual using sulphur dioxide and ammonia. The analysis of the finished water is described on the following page.

# Industrial Development Data

MUNICIPAL SERVICES

SECTION 6

## WATER ANALYSIS

Ph	7.8-8.2	Iron	0
Turbidity less than	J.T.U.	Manganese	0
Dissolved solids	(300 normal)	Calcium (as Cao)	89-110 ppm
Total Alkalinity		Mg 0	29-80 "
(as CaCo3)	(175 " )	SO 4	50-70 "
Silica - less than	5 ppm	NO 3 as N	0.94-2.5"
Total Hardness	(310 " )	Organic Nitrogen	0.94-1.8"
(as CaCo3)		Fluorine (as F)	1.0
		Chloramine Residual	0.3-0.5 "

## RATE SCHEDULE, TWO-MONTH BILLING PERIOD

(Effective October 1, 1976)  
(all water rates are net)

The rate consists of a basic charge based on installed meter size, plus a consumption charge for water used.

<u>METER SIZE</u>	<u>BASIC CHARGE</u>	<u>MINIMUM BILL</u>
5/8"	\$ 3.44	\$ 5.50
3/4"	5.14	9.24
1 "	8.11	16.34
1½ "	9.78	29.99
2 "	11.34	59.47
4 "	36.26	191.13
6 "	62.96	321.62
8 "	89.66	525.13

## CONSUMPTION RATES

Consumption charges per 100 cubic feet

First rate up to 7,200 cf	\$0.29.6
Next 52,800 cf	\$0.22.8
Remaining consumption cf	\$0.18.0

Water supply for sprinkler system and fire protection is supplied un-metered at no additional charge. Water connection for this service will be made at the customer's expense.

THE BRANTFORD DEVELOPMENT COMMISSION

City Hall

BRANTFORD, ONTARIO, CANADA



# Industrial Development Data

## MUNICIPAL SERVICES

## SECTION 6

### SEWAGE DISPOSAL

The Public Utilities Commission collects Sewer Service charges for the City of Brantford in accordance with By-law 38-68 to cover the operation and maintenance of the Sewage Treatment Plant. The rates are listed below.

<u>Meter Size</u>	<u>Per Two Months</u>
5/8"	\$2.48
3/4"	4.16
1"	7.35

Any meter or combination of meters over 1" in size to be billed at 45% of net water account.

### GARBAGE - INDUSTRIAL WASTE REMOVAL

Garbage disposal is conducted by sanitary land fill. The Municipality does not provide collection of garbage for industry. However, the handling of industrial waste can be contracted to contractors such as:

Brantford Disposal Service	150 Clarence Street	756-6380
Superior Sanitation Services	395 Mohawk Road	753-4840
Lorne Avey	242 Sheridan Street	752-3884

In the event an industry would prefer to dispose of its own industrial waste, the City dump, located on the south side of the City (Morrison Road) is open daily from 8:00 a.m. to 6:00 p.m. Monday through Friday. Saturday hours are from 8:00 a.m. to 5:00 p.m. Closed Sundays, Christmas Day and New Year's Day; holiday hours are 8:00 a.m. to 5:00 p.m.

THE BRANTFORD DEVELOPMENT COMMISSION

City Hall

BRANTFORD, ONTARIO, CANADA

# Industrial Development Data

## POWER SOURCES

## SECTION 7

### HYDRO

### POWER SUPPLY

The Public Utilities Commission is prepared to supply electric power to any industry in virtually unlimited quantity upon reasonable notice. At the present time, various industries are supplied with either 27.6 kv, 3 phase, 3 wire; 4,150 volts, 3 phase, 4 wire; and 600 volts, 3 phase. Commercial and industrial establishments are also supplied with 120/208 volts, 3 phase, 4 wire; and 115/230 volts, single phase. The frequency of supply is 60 cycle. The transformer capacity is 120,000 K.V.A. For detailed information, reference should be made to the Public Utilities Commission Office at 50 Wellington Street.

### GENERAL SERVICE ELECTRIC RATES MONTHLY SCHEDULE ON BILLINGS ISSUED ON AND AFTER FEBRUARY 1, 1977

#### (A) Applicable to loads of 0-5000 Kilowatts

##### ENERGY MONTHLY

First	50 KW Hrs. @ 6.4¢ per KW Hr.
Next	200 KW Hrs. @ 3.2¢ per KW Hr.
Next	9750 KW Hrs. @ 2.7¢ per KW Hr.
Balance of	KW Hrs. @ 1.4¢ per KW Hr.

#### (B) Applicable to loads over 5000 KW

Energy Charge - all KW Hrs. @ 0.925¢ per KW Hr.  
Demand Charge - all Kilowatts @ \$4.75 per KW

#### (C) Transformation allowance

1. For stepdown from distribution voltage - 15¢ per KW of Billing Demand
2. For stepdown from subtransmission voltage - 25¢ per KW of Billing Demand

#### KILOWATT DEMAND CHARGE MONTHLY -

First 50 KW of Demand - No charge  
Balance of KW Demand \$2.60 per KW

THE BRANTFORD DEVELOPMENT COMMISSION

City Hall

BRANTFORD, ONTARIO, CANADA

# Industrial Development Data

## POWER SOURCES

SECTION 7

### NATURAL GAS

Natural gas service is provided by Union Gas Limited which has been serving Southwestern Ontario for more than sixty years.

### SOURCE

Natural gas supplied to the City of Brantford comes primarily from Western Canada via the Trans-Canada Pipeline System. Union Gas operates extensive underground storage facilities in Lambton County which is integrated with its Southwestern Ontario transmission and distribution system. This storage capability enables Union Gas to provide a more reliable service particularly in times of peak demand in winter months.

### PIPELINES

The area is supplied primarily through a twelve inch diameter high pressure pipeline connecting with the Company's main east-west transmission system. Alternative backup supply facilities are integrated into the network of distribution pipeline serving the Residential, Commercial and Industrial areas of the City.

### GAS CHARACTERISTICS

The nominal B.T.U. rating of natural gas is 1,000 per cubic foot. The specific gravity is approximately .6 and the hydrogen sulphide content and sulphur content are well below the acceptable maximums.

### GAS RATES

Due to rapidly changing conditions in the world-wide energy situation, gas rates in Ontario are reviewed and adjusted from time to time under the jurisdiction of the Ontario Energy Board. The gas rate applicable to industrial and commercial users as of January 21, 1977 are the Interim General Service Rate 2 schedule (see next page). Current rate schedules applicable to Industrial non-contract customers are available through the Development Commission or the local Union Gas Office, Industrial Sales Department. Other large volume industrial rates may also be available through the local Union Gas Office.

THE BRANTFORD DEVELOPMENT COMMISSION

City Hall

BRANTFORD, ONTARIO, CANADA

# Industrial Development Data

## POWER SOURCES

## SECTION 7

### NATURAL GAS (cont'd)

GENERAL SERVICE RATE 2 SCHEDULE FOR ALL COMMERCIAL AND INDUSTRIAL PURPOSES - Monthly fixed charge: \$3.00  
and

First 50,000 cubic feet consumed per month: \$2.1838 per 1000 cubic feet.

Next 150,000 cubic feet consumed per month: \$2.0338 per 1000 cubic feet.

Next 13,800,000 cubic feet consumed per month: \$1.9338 per 1000 cubic feet.

All over 14,000,000 cubic feet consumed per month: \$1.8338 per 1000 cubic feet.

### FUEL OIL

Source of supply: Major refineries in the Bronte and Toronto area.

#### GRADES OF FUEL OIL AVAILABLE

#### COST/GALLON

Stove Oil

51.2¢

Furnace Oil

46.5¢

#2 Furnace Oil

(subject to  
storage and  
consumption)

February, 1977

THE BRANTFORD DEVELOPMENT COMMISSION

City Hall

BRANTFORD, ONTARIO, CANADA

# Industrial Development Data

## FINANCIAL DATA

## SECTION 8

### BANKS IN BRANTFORD (Main Branches)

The Canadian Imperial Bank of Commerce Dalhousie & Market Streets Manager: C.N. Collier	Phone: 752-5477
The Bank of Montreal 57 Market Street Manager: E. West	Phone: 752-7887
The Bank of Nova Scotia 171 Colborne Street Manager: M. Uniac	Phone: 759-5810
The Royal Bank of Canada 30-32 Market Street Manager: G.C. Grainger	Phone: 753-4121
The Toronto-Dominion Bank 108 Colborne Street Manager: B. Des Roches	Phone: 756-6144
Province of Ontario Savings Bank 138 Dalhousie Street Manager: J. Malcolm	Phone: 753-4131

### TRUST COMPANIES

The Permanent 70 Market Street Manager: L. Dunsdon	Phone: 759-4020
Crown Trust Company 114 Dalhousie Street Manager: C.M. Corneil	Phone: 752-4393
Equitable Trust-Fidelity Mortgage Co. 28 Market Street Manager: O. Risebrough	Phone: 752-4319

### FINANCE COMPANIES IN BRANTFORD

Associates Financial Services Ltd. 172 Dalhousie Street	Phone: 753-8661
Avco Financial Services 113 Colborne Street	Phone: 756-6317

THE BRANTFORD DEVELOPMENT COMMISSION

City Hall

BRANTFORD, ONTARIO, CANADA

# Industrial Development Data

## FINANCIAL DATA

## SECTION 8

### FINANCE COMPANIES (cont'd)

Beneficial Finance System 137 Colborne Street	Phone:	753-4195
Canadian Acceptance Corporation Ltd. 40 Market Street	Phone:	753-3111
Citizens Finance Co. Ltd. 146½ Colborne Street	Phone:	753-2691
Household Finance Corp. of Canada 118 Colborne Street	Phone:	752-6562
IAC Limited 233 Colborne Street	Phone:	752-3773
Niagara Finance Co. Ltd. 233 Colborne Street	Phone:	752-7863
Pacific Finance 169 Colborne Street	Phone:	752-5426

### COLLECTION AGENCY

Credit Bureau	Phone:	753-3483
154 Dalhousie Street (Collections)	Phone:	753-7311

THE BRANTFORD DEVELOPMENT COMMISSION

# Industrial Development Data

## The Survey of Markets 1976/77

Census Agglomeration of

# Brantford

Census agglomeration of Brantford is comprised of Brantford, city; Paris, town; and Brantford, township. In Brant county, Ontario.

On CNR, TII & B, LE & N lines.

Chamber of Commerce—Jack Mann, general manager, 77 Charlotte Street N3T 5T6, 519-753-2617.

Industrial Commissioner—Gordon MacLennan, City Hall, 519-759-4150.

D.W. Latta

**Market: 10% above national average**

Retail sales, 1976 .....	\$233.9m.
% Canadian total .....	0.40
Per capita .....	\$2,780

**Income: 3% below national average**

Personal disposable income, 1976 ...	\$439.5m.
% Canadian total .....	0.35
Per capita .....	\$5,210

**Current Growth Rate: 10% per decade**

Population (000), June 1, 1976 .....	84.3
% Canadian total .....	0.36
% Change, '71-'76 .....	+4.98

Note — Estimates are based on the census agglomeration area as defined in the 1971 census.

**HOUSEHOLDS**

No. ....	1971	1968
	23,950	*14,798
Aver. no. per household .....	3.2	*3.6
*For city of Brantford only.		

**GOVERNMENT**  
Mayor and 10 aldermen, elected biennially, in December.

**HOUSING**

	1971	%
	Census	Total
Occupied dwellings, no. ....	23,915	100.0
Owned*, no. ....	14,510	60.8
Median value, \$ ....	10,335	....
Rented, no. ....	7,360	30.8
Av. monthly rent, \$ ....	109	....
Dwelling, type of: No. ....		
Single detached ....	16,180	69.3
Double house ....	975	4.0
Row, terrace, etc. ....	590	2.5
Apartments, flats ....	4,020	16.8
Duplexes ....	1,760	7.4
Mobile .....	....	....
*For single detached owner-occupied only.		

**HOUSEHOLD FACILITIES**

	1971	%
	Census	Total
Occupied dwellings .....	23,515	100.0
Dwellings with:		
Refrigerator .....	23,830	99.6
Home freezer .....	8,165	34.1
Television .....	23,360	97.7
Automobile .....	19,315	80.8
Furnace heating ....	20,435	85.9
Fuel:		
Oil .....	11,165	46.7
Electricity .....	1,090	4.6
Coal .....	135	0.6
Gas .....	11,400	47.7

**FAMILIES**

No. ....	1971	1968
	19,965	*17,315
Aver. no. per family .....	3.5	*3.4
*For city of Brantford only.		

**RELIGION**

	1971	%
	No.	Total
Protestant .....	40,565	62.8
Roman Catholic ....	16,355	25.3

**BUILDING PERMITS**

Value, \$000 ..	1975	1974	1973
	41,649	31,840	34,763

**HOMES BUILT**

No. ....	1975	1974	1973
	1,200	1,155	617

**LABOR FORCE BY OCCUPATION**

	1971	%
	Census	Total
Managerial & admin. ....	1,280	3.6
Engineering & science ..	650	1.8
Law & social science ..	250	0.7
Religion .....	85	0.2
Teaching .....	1,030	3.0
Medicine & health .....	1,450	4.1
Art & literary .....	340	1.0
Clerical .....	5,640	15.8
Sales .....	3,415	9.6
Service .....	3,540	9.9
Primary .....	1,120	3.1
Processing .....	1,485	5.6
Machining .....	2,500	7.0
Product fabricating ..	4,475	12.6
Construction .....	1,563	4.4
Transport equipment ..	1,055	3.0
Materials handling ..	1,205	3.4
Miscellaneous .....	3,990	11.2
All occupations .....	35,810	100.0

**POPULATION**

Census:	1971	1968
Male .....	39,735	....
Female .....	40,545	....
Total .....	80,285	75,187
Age groups, 1971:	Male	Female
0-4 .....	3,220	3,040
5-9 .....	4,820	3,785
10-14 .....	3,965	3,690
15-19 .....	3,825	3,805
20-24 .....	3,995	3,440
25-34 .....	4,930	4,785
35-44 .....	4,590	4,510
45-54 .....	4,580	4,700
55-64 .....	3,710	3,870
65-69 .....	1,210	1,530
70+ .....	2,610	3,305

**LANGUAGE**

Most often spoken at home			
	1971	%	
	Census	Total	
English .....	74,900	93.3	
French .....	520	0.6	

**RACIAL ORIGIN**

	1971	%
	Census	Total
British .....	57,095	71.1
French .....	2,865	3.6
German .....	4,035	5.0
Italian .....	2,655	3.3
Netherlands .....	2,385	3.0
Polish .....	2,930	3.7
Scandinavian .....	425	0.5
Ukrainian .....	2,040	2.5
Other .....	5,855	7.3

**EARNINGS**

	Av. weekly earnings	
	Brantford	Canada
	\$	\$
1971 .....	128.74	137.64
1972 .....	141.80	149.22
1973 .....	154.54	160.46
1974 .....	170.50	178.09
1975 .....	195.25	203.34

**MANUFACTURING INDUSTRIES**

	1973	1971
Plants, no. ....	194	215
Employees, no. ....	16,138	13,840
Salaries, wages, \$000 ..	136,463	98,544
Materials, cost of, \$000 ..	283,814	193,853
Shipments, value of, \$000 ..	527,977	374,351
Total value added, \$000 ..	274,291	186,115

**PUBLICATIONS**

Newspaper, daily: .....	1976
Expositor (Southam) ..	28,032
Circulation, total .....	18,022
city .....	18,022
outside .....	10,610

**RETAIL TRADE**

1968 Census	
Total sales, \$000 .....	84,302.1
Stores, no. ....	449
Year-end inventory, \$000 ..	9,515.2
Employees, no. ....	2,455
Payroll, total, \$000 .....	8,116.6
By kind of business group:	Stores
Food .....	102
General .....	7
Automotive .....	108
Apparel & accessories ..	69
Hardware & home furnishings .....	56
Other .....	102

**EMPLOYMENT**

(1961 = 100)	Brantford	Canada
1971 .....	124.8	127.8
1972 .....	128.7	128.9
1973 .....	143.7	135.9
1974 .....	152.4	142.8
1975 .....	153.2	141.1

**BANKING**

Branches, no. (1976) ....	17
\$000, 1975 .....	3,547,314
\$000, 1971 .....	1,734,427

**FAMILY INCOME**

	1971 Census	No.	%
Families, total .....	19,665	100.0	
Under \$3,000 .....	1,500	7.5	
\$3,000 - 4,999 .....	1,760	8.9	
5,000 - 6,999 .....	2,835	14.2	
7,000 - 9,999 .....	5,910	29.6	
10,000 - 14,999 .....	5,590	28.0	
15,000+ .....	2,345	11.8	
Average income .....	\$9,751	....	

**TOTAL INCOME**

	1971 Census	Male	Female
Population (15 yrs. +) ..	28,500	29,970	
No income, no. ....	1,965	8,090	
Total income reported:			
Total no. ....	29,595	21,880	
Under \$1,000 .....	2,470	5,540	
1,000 - 1,999 .....	2,310	5,200	
2,000 - 2,999 .....	3,230	5,830	
4,000 - 4,999 .....	1,860	2,160	
5,000 - 5,999 .....	2,545	1,150	
6,000 - 6,999 .....	3,380	685	
7,000 - 9,999 .....	7,110	905	
10,000 - 14,999 .....	2,625	315	
15,000+ .....	1,070	95	
Average income, \$ .....	6,510	2,776	
Median income, \$ .....	6,235	2,070	

**RADIO STATION**

CKPC, 10,000 watts.
CKPC-FM, 50,000 watts.

**SCHOOL ATTENDANCE**

	1971	%
	Census	Total
Population, 5 years + ..	69,395	100.0
Attending full-time:		
Less than Grade 5 ..	5,620	8.2
Grades 5-8 .....	4,970	7.2
Grades 9-13 .....	5,140	7.4
University .....	805	1.2
Not attending full-time:		
Less than Grade 5 ..	2,930	4.2
Grades 5-8 .....	13,025	18.8
Grades 9-13 .....	24,160	34.8
Some university .....	1,605	2.3
University degree ...	1,155	1.7

**TAXATION STATISTICS**

	1974	%
	Total	
Income class:		
Under \$2,000 .....	8,768	20.1
2,000 - 3,000 .....	3,467	7.9
3,000 - 4,000 .....	2,799	6.6
4,000 - 5,000 .....	3,268	7.7
5,000 - 7,000 .....	5,035	11.5
7,000 - 10,000 .....	8,614	15.1
10,000 - 15,000 .....	9,265	21.3
15,000 - 20,000 .....	2,656	6.1
Over \$20,000 .....	1,680	3.9
Total returns, no. ....	43,680	100.0
Total income (\$000) .....	341,629	....
Average income, \$ .....	7,807	....
Total tax (\$000) .....	55,314	....
Average tax, \$ .....	1,692	....

THE BRANTFORD DEVELOPMENT COMMISSION

City Hall

BRANTFORD, ONTARIO, CANADA

# Industrial Development Data

## FINANCIAL DATA

SECTION 8

### BUYING POWER INDEXES\*

	<u>BRANTFORD URBAN AREA</u>	<u>COUNTY OF BRANT</u>
<u>POPULATION (1976)</u>		
10 year rate of growth	10%	8%
Population	84,300	100,500
Households	26,900	31,500
<u>PERSONAL DISPOSABLE INCOME (1976)</u>		
Total	\$439,500,000.	\$517,200,000.
Per Capita	\$5,210.	\$5,150.
<u>RETAIL SALES (1976)</u>		
Total	\$233,900,000.	\$262,800,000.
Per Capita	\$2,780.	\$2,620.
<u>MANUFACTURING</u>		
Total Value (1973)	\$274,291,000.	

\* The Financial Post Survey of Markets, 1976/77

Note: Census agglomeration of Brantford is comprised of Brantford, city; Paris, town; and Brantford, township.

THE BRANTFORD DEVELOPMENT COMMISSION

City Hall

BRANTFORD, ONTARIO, CANADA



# Industrial Development Data

## FINANCIAL DATA

## SECTION 8

### RETAIL TRADE (1976)\*

	<u>BRANTFORD</u>	<u>BRANT</u>
TOTAL SALES	\$233,900,000.	\$262,800,000.
Grocery & Combination Stores	\$ 57,500,000.	\$ 62,800,000.
Clothing Stores	11,100,000.	13,900,000.
Hardware Stores	800,000.	1,300,000.
Furniture Stores	5,600,000.	9,100,000.
Drug Stores	6,000,000.	6,900,000.
Motor Vehicles	46,700,000.	47,900,000.

\* The Financial Post Survey of Markets, 1976/77

Note: Census agglomeration of Brantford is comprised of Brantford, city; Paris, town; and Brantford, township.

THE BRANTFORD DEVELOPMENT COMMISSION

City Hall

BRANTFORD, ONTARIO, CANADA

# Industrial Development Data

## TRANSPORTATION

## SECTION 9

### CANADIAN NATIONAL RAILWAYS

Facilities of the Canadian National Railways in Brantford are as follows:

#### YARD

Storage capacity of 400 cars. The C.N.R. operates approximately ten miles of industrial trackage through central Brantford.

#### TEAM TRACKS

Wadsworth Street - 20 car capacity  
Cainsville - 10 car capacity

#### SCALES & RAMPS

Two loading ramps (handles Piggyback Trailers)  
52' 125-ton capacity scale track  
20-ton capacity truck scale  
5-ton capacity platform scale in freight shed

#### OVERHEAD CRANES

3-ton capacity electric overhead crane in freight shed  
10-ton overhead track crane located just west of the freight shed

#### FREIGHT OFFICE AND SHED

Located on Wadsworth Street, the shed is capable of handling 30 merchandise cars and is equipped with 1½ ton fork lift truck.

Yard switching is on a 24-hour day basis, Monday through Friday and an 8 hour basis Saturday and Sunday. Cars are inter-switched with the T.H.&B. and L.E.&N. daily.

#### PASSENGER DEPOTS

Ticket Office - Station - Wadsworth Street Phone: 753-4179

TELEGRAPH OFFICE - 8 Grand River Avenue Phone: 753-3477

#### EXPRESS

The Express Office is located at the west end of the passenger station and handles Canadian National Express and railway express, also air express and air cargo shipments for TCA. Cartage with pick-up and delivery service is offered on Less-Than-Carload and Carload Freight handled to or from the C.N.R. freight shed.

THE BRANTFORD DEVELOPMENT COMMISSION

City Hall

BRANTFORD, ONTARIO, CANADA

THE TORONTO, HAMILTON, BUFFALO RAILWAY CO.

The T.H.&B. Railway Company serves the south side of the City entering at Cainsville on the east from Hamilton. The general offices are located in the Railway Station, Hamilton, Ontario. District offices are located in Buffalo, Pittsburg and Port Colborne, Ontario.

YARDS

Mohawk Yard - extending east from Mohawk Street -  
capacity - 150 cars

Market Street - extending east from Market Street  
to Eagle Avenue - capacity - 75 cars

TEAM TRACKS

Cainsville, Market Street, West Colborne Street

SCALES AND RAMP

50 foot, 150-ton capacity track scale in Market Street  
Yard, 2 car ramp at Newport Street

FREIGHT

Daily switching, 5 days per week, additional service  
as required.

Through manifest freight service to all connections.

PASSENGER

All services from Hamilton. Tickets, information and  
baggage handling arranged at Brantford Station.

EXPRESS

Railway Express Company operate over our line and provide  
service in and out of Brantford.

INTERCHANGE

With Lake Erie and Northern and Canadian National  
Railways at Brantford.

CONNECTIONS

With New York Central System at Waterford; New York  
Central System at Welland and Canadian Pacific Railway at  
Hamilton.

BRANTFORD MUNICIPAL AIRPORT

Located on the immediate outskirts of the City of Brantford, the Brantford Municipal Airport offers numerous advantages to area business men. Easy driving distance to the principal centres, it is within easy flying distance of major centres in Canada and the United States.

FLYING TIMES:

Toronto	30 minutes	Detroit	3 hours 20 min.
Pittsburgh	2 hours 30 min.	Montreal	1 hour 22 min.
Chicago	3 hours 50 min.	New York	3 hours 20 min.
Cleveland	2 hours 10 min.	North Bay	2 hours 10 min.
Muskoka	1 hour 15 min.		

THE BRANT NORFOLK AERO CLUB

The Club operates the Brantford Municipal Airport for the City Airport Commission and is equipped to train pilots for private or commercial licenses. The Club is equipped to give instruction in night flying as well as Link and Instrument Training. All instruction is supervised by Government Licensed Instructors.

COMFORTABLE LOUNGE

Lounge facilities are at the disposal of members, and may be used for business conferences when time is an important consideration. A call to the Airport prior to arrival will be all that is needed to arrange the necessary accommodation.

MODERN CAFETERIA

Noon luncheon snacks and coffee are available at the Airport cafeteria. Hours: Open all day until 4:30 p.m., Saturdays open until 5:30 p.m. - also open Sundays.

CHARTER FLIGHTS

The Brant-Norfolk Aero Club can place at the disposal of its members (pilots and non-pilots), competent pilots and fully serviced aircraft for charter flights to fields at major centres. Arrangements for such charter flights can be made with the Airport Manager, Mr. Bob Michalchuk.

# Industrial Development Data

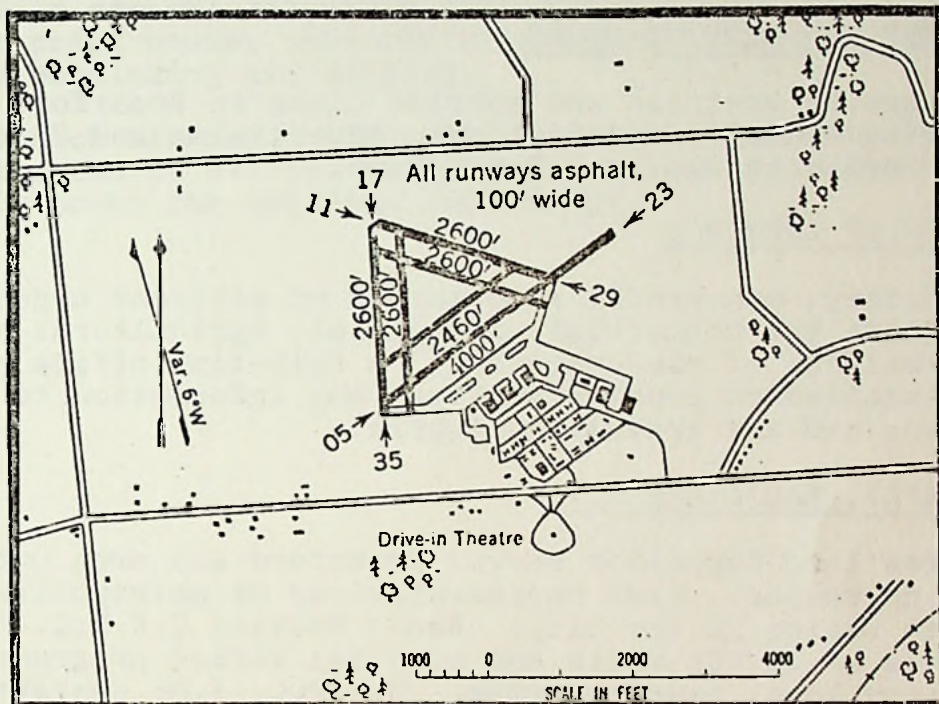
## TRANSPORTATION

## SECTION 9

### BRANTFORD MUNICIPAL AIRPORT (cont'd)

#### CUSTOMS

The Brantford Municipal Airport is a Canadian Customs Port of Entry. Prior notification of arrival is required for any flight landing at Brantford from the United States.



### BRANTFORD AIRPORT BRANTFORD, ONT.

LAT. 43°03'N LONG. 80°21'W ELEV 815'

4 miles W of Brantford

OPERATOR Corp. of City of Brantford

USABLE All year

LIGHTING Flashing beacon. Runway lights on outer runways available on prior request. Lighting on 2 hr. notice to Brantford Flying Club, Phone (519) 753-2521 or 753-3617 after hours 756-5126.

RADIO AIR GROUND. Call Sign: VYE 85

Trans and Guards 122.8 (Daylight hours)

Operator: Brantford Flying Club.

RADIO NAV. AID. Brantford N.D.B. 4½ N.M. S.W.

IDENT. F.D.  $\cdot \text{---} \text{---} \cdot$  207 KHz

FACILITIES Hangars and Servicing available. GAS: 80/87, 100/130. OIL: 65, 80, 100, 120. Telephone at field. Taxi. Bus and Hotels in Brantford.

REMARKS Licensed airport. Customs port of entry and exit for tourists only. Customs House 4½ miles. One hour prior notice required.

THE BRANTFORD DEVELOPMENT COMMISSION

City Hall

BRANTFORD, ONTARIO, CANADA

# Industrial Development Data

## CIVIC DATA

## SECTION 10

### GENERAL

#### CHURCHES AND DENOMINATIONS

Brantford has churches of all faiths. Protestant, Roman Catholic, Jewish Synagogue, Mormon, Jehovah's Witness, Christian Science, Spiritualist, and the Brantford Corps of the Salvation Army.

#### BUSINESS AND SERVICE CLUBS

There are 33 business and service clubs in Brantford including women's organizations, Advertising and Sales Club, Shriner's Club and Zonta Club.

#### CHAMBER OF COMMERCE

A voluntary, non-profit association of citizens organized to promote the commercial, industrial, agricultural and civic welfare of the community. A full-time office staff is maintained to provide services and information to citizens and the travelling public.

#### NEWSPAPER, RADIO AND T.V.

The Brantford Expositor serves Brantford and area with a daily newspaper. Five representatives of metropolitan dailies reside in the City. Radio Station C.K.P.C.-A.M. operates on 10,000 watts and provides varied programming, world and local news coverage. C.K.P.C.-F.M. operates on 50,000 watts, providing diversified stereo programming for Brantford and district.

#### HOTELS AND MOTELS

Graham Bell Hotel - 36 rooms	753-3431
Bell City Motel - 23 units	756-5236
Four Star Motel - 21 units	753-8424
Grant Motel - 24 units	753-8451
Jolly Baron Inn - 117 units	753-7371
Holiday Inn - 123 units	753-8651
Plaza Motel - 13 units	759-5648
Mohawk Motel - 23 units	753-8621
Sherwood Inn Motel - 24 units	756-5261
Sunset Motel - 10 units	753-2631
Twin Gates Motel - 13 units	752-6554

THE BRANTFORD DEVELOPMENT COMMISSION

City Hall

BRANTFORD, ONTARIO, CANADA

GENERAL (cont'd)

LIBRARIES

The Brantford Public Library offers a wide range of books (150,000 volumes); long-playing records (3,300); 168 film strips; 362 movie films; 788 micro-films; 352 large print books; children's library; "shut-in" service and a continuing art display.

A Branch Library, officially opened in January, 1975, and located at 441 St. Paul Avenue offers approximately 22,000 books for children and adults.

# Industrial Development Data

## CIVIC DATA

## SECTION 10

### HOUSING\*

In 1976, new housing accommodation in Brantford was increased by 1,250 units which included 514 single-family homes. This was a decrease from 1975 of 663 units. It is noted that over the past five years our housing stock has increased by some 6,117 units.

### BUILDING CLASSIFICATION\*

	<u>1975</u>	<u>1976</u>
TOTAL NUMBER OF SINGLE DWELLING UNITS	15,688	16,202
Duplexes units--	1,358	1,550
Triplexes "	128	137
Fourplexes "	354	382
Conversions to multi-family "	95	97
Townhouses "	<u>232</u>	<u>491</u>
TOTAL	17,855	18,859
Number of multi-family units	<u>5,087</u>	<u>5,333</u>
TOTAL DWELLING UNITS	<u>22,942</u>	<u>24,192</u>
Population per dwelling unit	3.0	2.8

Industrial and single-family categories showed substantial increases, with the industrial values increasing by \$6,921,232. to \$9,032,182. and single-family housing starts increasing by 32 to 514 with a value increase of \$1,818,768. Housing unit starts were down from 1,913 in 1975 to 1,250 in 1976 (major decline was in apartment starts), however, starts were above the five year average of 1,068 by 182.

\* Information obtained from City Engineering Department



EDUCATION

The City of Brantford is in Brant County and the public schools in the City are under the jurisdiction of the Brant County Board of Education.

The Board provides equal educational opportunities for all children from Kindergarten to Grade 13 in all areas of instruction, and the programs are comparable to those in any other Ontario Municipality.

Special education is provided for students with learning disabilities, including a school for the mentally retarded, a school for students suffering from cerebral palsy, and special classes for children with hearing and visual disabilities.

The Board operates six secondary schools, four of which are completely composite. One provides arts and science, business and commerce, and the sixth is a special vocational school for occupational students.

There are 52 elementary schools - 29 in the City and 23 in the surrounding County.

All of these schools are well staffed.

EVENING CLASSES & ADULT EDUCATION

In addition to the regular day classes, evening classes are offered in advanced academic and technical subjects, commercial work, home economics, industrial arts and special subjects such as art, English for New Canadians and Conversational French.

SUMMER SCHOOL PROGRAMS

The Board operates a summer school program with remedial courses and make-up courses during July and August for both elementary and secondary school students.

Further information on the Brant County Elementary and Secondary Schools may be obtained from the Brant County Board of Education, 349 Erie Avenue, 756-6301.

# Industrial Development Data

CIVIC DATA

SECTION 10

## EDUCATION (cont'd)

W. ROSS MACDONALD SCHOOL (formerly Ontario School for the Blind) is located in Brantford on a 42 acre park on number 2 Highway in the north-west section of the City.

In 1973, a new Educational Complex was opened replacing the original school built in 1872 and, at present, 207 students from across Canada are enrolled at the school. A deaf-blind department, opened in 1971, has an enrollment of 27 pupils.

Contained within the school is a 25 yard swimming pool which is on contract to the Brantford Recreation Commission for out of school use.

## BRANT COUNTY SEPARATE SCHOOL BOARD

The Brant County R.C. Separate School Board has under its jurisdiction 18 elementary schools with grades from Kindergarten to Grade 10. The total enrollment in the separate schools is approximately 3,580. The Elementary Separate Schools now come under the jurisdiction of the Ministry of Education for the Province of Ontario, with a Director of Education appointed by the Brant County R.C. Separate School Board.

On the secondary level, the school known as St. John's College, located on Paris Road, is co-educational under the joint direction of the Congregation of the Resurrection and the Sisters of Providence. There is an enrollment of 300 students in Grades 11-13 with 33 staff members.

The recent addition is of modern design with open areas, together with a very serviceable library. The general course is offered with options in commercial art, music, classical civilization, Italian, world politics, world religions and French. Grades 11, 12 and 13 were put on an individual timetable basis in September, 1971.

For information regarding the Elementary Schools, Kindergarten to Grade 10, contact the Director of Education of Separate Schools, 322 Fairview Drive, Brantford, Ontario (Telephone 756-6369).

THE BRANTFORD DEVELOPMENT COMMISSION

City Hall  
BRANTFORD, ONTARIO, CANADA

MUNICIPAL PARKS & RECREATION

GENERAL

Public recreation services are administered by the Board of Park Management and Recreation Commission. There are 72 park areas comprising 890 acres of land. These areas are designed to provide a reasonable balance between active recreation areas and ornamental and rest areas. Over 250 acres of additional lands have been acquired for future development.

The Board of Park Management and Recreation Commission is responsible for operating two municipal cemeteries - Mount Hope and Greenwood.

The Department has extensive horticulture and forestry sections. Many beautiful horticultural parks are located throughout the City, with Lorne Park being the showplace. Over 250,000 annuals are planted within the City each year. Street trees, and trees on public property are maintained by the forestry section. Over 1,200 new trees are planted each year to provide future generations with mature trees.

The Board of Park Management and Recreation Commission offers a variety of activities for people of all ages and interests, and can guide you to participation in the following activities and many more: arts and crafts; hiking and touring; bands; camping; community committees; dancing; senior citizens; sports of all kinds; symphony orchestra and drama. A staff of 150 recreation leaders conduct the summer program of the Recreation Commission and a staff of 100 conduct the winter program.

The highlights of the Brantford recreation programs have to be the wide variety of youth activities, the Brantford Memorial Concert Band and the St. John's Girls Drum Corps, providing top entertainment, and a senior citizens second to none in Canada.

There are nine senior citizens clubs in Brantford, eight of them are neighbourhood groups and one is a day centre located downtown. Information can be obtained at the Parks and Recreation Office.

MAJOR RECREATIONAL FACILITIES AND PROGRAM HIGHLIGHTS

BRANTFORD AND DISTRICT CIVIC CENTRE

A 3,000 seat arena and 500 seat auditorium were completed in March, 1967. This facility provides an attractive setting for Brantford's major spectator events and large community activities of all kinds.

MAJOR RECREATIONAL FACILITIES AND PROGRAM HIGHLIGHTS (cont'd)

GLENHYRST GARDENS

A beautifully landscaped former private estate is now the home of Glenhyrst Arts Council, the cultural centre of the district. Activities include an annual antique show, a pantomime, classes in art, ballet, French, and a public Art Gallery.

BELL HOMESTEAD AND HENDERSON HOME

Originally the home of Alexander Graham Bell, inventor of the telephone, the Bell Homestead was the site of the first long distance telephone call. July 26, 1974 marked the centennial of the invention of the telephone in Brantford.

The Henderson Home was donated to the City and moved to its present site in 1969 - originally the home of the Rev. T.P. Henderson, first business agent for the telephone.

There are beautiful grounds and a picnic area at the site of the above two homes.

PARKS

There are 72 park sites containing 890 acres of park land in the City of Brantford.

- 18 horticultural parks
- 44 neighbourhood parks
- 27 softball diamonds - 12 hardball diamonds
- 9 soccer/football fields
- 8 wading pools
- 31 natural ice rink locations including 10 asphalt multi-purpose pads, used as rink sites in winter and tennis in the summer
- 30 community committees
- 8 major recreation centres

- NORTH PARK RECREATION CENTRE - 22 acres
  - 2 arenas
  - enclosed football/soccer field
  - practice football/soccer field
  - floodlit softball diamond
  - hardball diamond
  - track and field facilities
  - field house w/dressing rooms
  - Brant Aquatic Centre
    - 65 metre, 8 lane pool with separate training pool & 10 metre diving tower
    - saunas
    - fitness and health area
    - restaurant

THE BRANTFORD DEVELOPMENT COMMISSION

City Hall

BRANTFORD, ONTARIO, CANADA

# Industrial Development Data

## CIVIC DATA

## SECTION 10

### NORTH PARK RECREATION CENTRE (cont'd)

Future plans - tennis courts

### LIONS PARK RECREATION CENTRE - 33 acres

- 1 arena
- enclosed soccer/football field
- enclosed softball diamond  
(both floodlit)
- 1 practice field
- all-weather track
- 4 tennis courts - floodlit

### MOHAWK PARK - 72 acres

- presently being redeveloped
- picnic area
- wading pool, playground
- pavillion
- football/soccer field
- track and field facilities
- lake

### WATERWORKS PARK 183.6 acres

- wooded, picnic, nature walks
- soccer/football field
- 2 softball diamonds

### COCKSHUTT PARK

- floodlit enclosed baseball  
diamond with grandstand
- practice baseball diamond and track  
(home of Cricket Club)

### EAGLE PLACE COMMUNITY CENTRE

### RESURRECTION SCHOOL COMMUNITY CENTRE

SCHOOLS - schools are available for recreational programs  
outside of school hours. Non-profit organizations  
pay caretaker fees only

- school grounds are programmed by Parks and  
Recreation outside of school hours

GOLF - NORTHRIDGE - 18 holes, watered fairways and club house

- ARROWDALE - 9 holes, club house

- plus 4 private golf courses - 1-18 hole and 3-9 hole

TENNIS - Lions Park - 4 floodlit courts

- Dufferin Club - 6 floodlit courts

- Birkett's Lane - 3 floodlit courts

### EARL HAIG POOL

- 50 metre outdoor pool with change  
facilities

THE BRANTFORD DEVELOPMENT COMMISSION

City Hall

BRANTFORD, ONTARIO, CANADA

# Industrial Development Data

LABOUR

SECTION 11

## EMPLOYMENT AND AVERAGE WEEKLY WAGES AND SALARIES BY INDUSTRY FOR THE BRANTFORD AREA

<u>Type of Industry</u>	<u>No. of Employees</u>	<u>Average Weekly Wages and Salaries</u>		
		<u>Dec/73</u>	<u>Dec/74</u>	<u>Dec/75</u>
Manufacturing	14,400	\$ 168.74	\$ 193.68	\$ 222.09
Durable Goods	9,200*	183.64	210.65	238.56
Non-Durable Goods	5,200*	142.87	164.63	193.21
Industrial Composite	21,200	156.90	177.58	200.81

\* Durable Goods and Non-Durable Goods are a breakdown of manufacturing.

### Definitions:

INDUSTRIAL COMPOSITE - The sum of the industries.

DURABLE GOODS MANUFACTURING - The sum of wood products, furniture and fixtures, primary metal industries, metal fabricating industries, machinery (except electrical), transportation equipment, electrical products, and non-metallic mineral products.

NON-DURABLE GOODS MANUFACTURING - The sum of the remaining manufacturing industries.

Source: Statistics Canada, Employment Earnings and Hours, January, 1976.

These figures are based on reports from employers of 20 or more employees.

### AREA AND DISTANCE INVOLVED

The majority of Brantford employees live either in the City of Brantford or the immediately adjacent areas throughout the County, including the Town of Paris and the Villages of Burford and St. George, which lie about 7 to 9 miles from the centre of Brantford. There is also some commuting to employment in Brantford from those areas of Norfolk, Wentworth and Oxford Counties, lying just outside the Brant County lines. The farthest point in the County is about 18 to 20 miles from the City.

THE BRANTFORD DEVELOPMENT COMMISSION

City Hall

BRANTFORD, ONTARIO, CANADA

LABOUR TURNOVER

This factor varies considerably in different types of industry, but the overall ratio is considered not excessive. For example, a fair-sized heavy industry with a total hourly-rated work force of 800-900 lists -

- 205 employees with 25 or more years of service
- 330 employees with 15 or more years of service
- 25 employees with 10 or more years of service
- 25 employees with 5 or more years of service
- 60 employees with 1 or more years of service

In other words, over 50% of the workers have 15 or more years of service.

WORKING HOURS AND STATUTORY HOLIDAYS

Most industrial plants work a 40-hour week on a variety of 1, 2 and 3 shift schedules.

Statutory Holidays are commonly recognized as -

- New Year's Day
- Good Friday
- Victoria Day
- Dominion Day
- Civic Holiday
- Labour Day
- Thanksgiving Day
- Christmas Day

In addition, Easter Monday and Remembrance Day are recognized as legal, though not public holidays. Many collective agreements list 8 to 10 as paid holidays.

TRAINING FACILITIES AND EDUCATION

Several avenues are available to workers and employers in Brantford for further education and training.

- 1) The Brant County Board of Education offers evening courses in both academic and vocational areas. Special interest courses are also available.
- 2) The Canada Manpower Centre provides upgrading and skill courses through the facilities of the Braneida Campus of Mohawk College.

TRAINING FACILITIES AND EDUCATION (cont'd)

- 3) Mohawk College, Braneida Campus, provides evening courses in technical, vocational and general interest areas. In some cases, students can also avail themselves of the full-time day program sponsored by the Canada Manpower Centre, on a fee paying basis.
- 4) The Canada Manpower Centre, in conjunction with the Provincial Ministry of Education provides financial and technical assistance in establishing on-the-job training programs through the Canada Manpower Industrial Training Program.



# Industrial Development Data

## INDUSTRIAL DEVELOPMENT

SECTION 12

### INDUSTRIAL DEVELOPMENT IN BRANTFORD 1964 - 1975 INCLUSIVE

<u>YEAR</u>	<u>NEW INDUSTRIES</u>
1964	6
1965	7
1966	6
1967	6
1968	2
1969	4
1970	1
1971	3
1972	1
1973	5
1974	3
1975	6
	<hr/>
	50
	<hr/>

In the 12 year period 1964-75, Building Permit value for some 50 new industries and a multitude of industrial expansions in Brantford totalled \$38,882,554. The capital investment by industry in new and expanded facilities during that period was some 97 million dollars.

The impetus to this phenomenal development is greatly due to municipal and utility co-operation and initiative in providing all necessary services as required.

### THE BRANEIDA INDUSTRIAL PARK

BRANEIDA - (Brantford's North-Eastern Industrial Development Area) embracing some 1,000 acres of industrially zoned land is a prime example of the Municipality's intent to co-operate with industrial and new development. Our policy has been to assemble land in advance of need and, then on requirement, fully service blocks and sell in various sized parcels for industrial projects.

In order that there will be no misunderstanding of the term "fully serviced", we mean that the following are provided:

storm sewer	sanitary sewer
municipal water	natural gas
hydro	rail (if required)
pavement	curb & gutter
street lights	

Please enquire about our all-inclusive industrial land price.

THE BRANTFORD DEVELOPMENT COMMISSION

City Hall

BRANTFORD, ONTARIO, CANADA

# Industrial Development Data

THE BRANTFORD DEVELOPMENT COMMISSION

City Hall

BRANTFORD, ONTARIO, CANADA

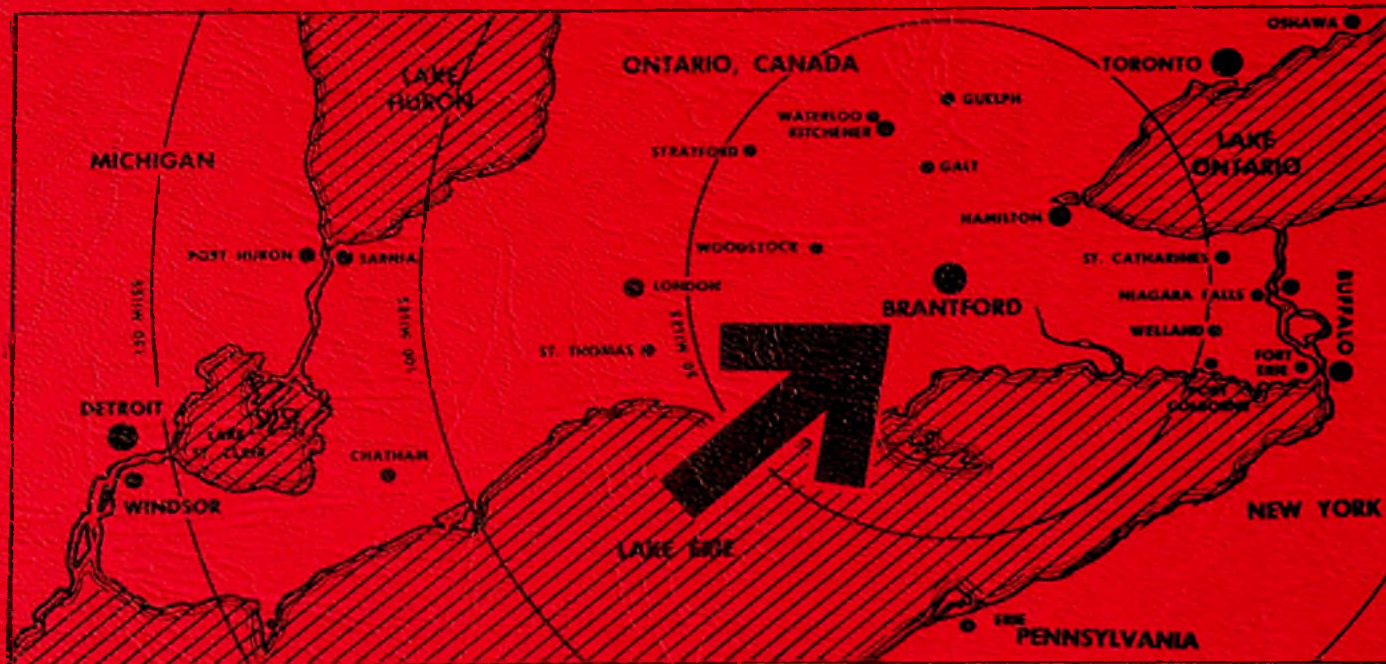




3 9154 00167379 7

**INDUSTRY IS ON THE MOVE TO**

# Brantford



**people  
like  
brantford**

**BRANTFORD DEVELOPMENT COMMISSION**  
CITY HALL / BRANTFORD, ONTARIO, CANADA