

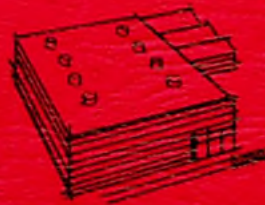
1176

MAKE YOUR OWN ASSESSMENT OF

Brantford

HERE ARE THE

facts



**Local
History**

Desk Ref. .
381
Bra

BRANTFORD INDUSTRIAL COMMISSION
CITY HALL / BRANTFORD, ONTARIO, CANADA



BRANTFORD
PUBLIC LIBRARY

REFERENCE

to be read in Library only

Class No.

S.R. Desk Ref
381
B. 100
1976
cl

Industrial Development Data

TABLE OF CONTENTS

| <u>ITEM</u> | <u>SECTION</u> |
|---|----------------|
| LOCATION | 1 |
| CLIMATE | 2 |
| POPULATION | 3 |
| MUNICIPAL ADMINISTRATION & FINANCES | 4 |
| MUNICIPAL TAXES | 5 |
| MUNICIPAL SERVICES | 6 |
| Police | |
| Fire Protection | |
| Streets and Roads | |
| Water | |
| Sewage | |
| Garbage - Industrial & Commercial waste | |
| POWER SOURCES | 7 |
| Hydro | |
| Gas | |
| Fuel Oil | |
| FINANCIAL DATA | 8 |
| TRANSPORTATION FACILITIES | 9 |
| Railways | |
| Air Services | |
| Customs | |
| CIVIC DATA - General, Housing, Education, Recreation | 10 |
| LABOUR | 11 |
| INDUSTRIAL DEVELOPMENT | 12 |
| INDUSTRIAL LANDS AVAILABLE | 12 |

BRANTFORD PUBLIC LIBRARY
JAN - - 1977

THE BRANTFORD DEVELOPMENT COMMISSION

City Hall
BRANTFORD, ONTARIO, CANADA

Industrial Development Data

LOCATION

SECTION 1

GENERAL

The City of Brantford, Ontario is centrally located in Canada's most concentrated industrial area which surrounds the westerly end of Lake Ontario. Served by #2, #24, #53 and #54 Provincial Highways, Brantford is directly on #403 Highway, which will eventually project the Queen Elizabeth Way at Hamilton to the east and #401 Highway at Woodstock to the west.

Road Miles - Brantford to:

| | | | |
|----------------|----|------------|-----|
| Galt | 17 | St. Thomas | 74 |
| Hamilton | 24 | Buffalo | 90 |
| Kitchener | 26 | Oshawa | 97 |
| Guelph | 31 | Owen Sound | 113 |
| Oakville | 42 | Windsor | 170 |
| London | 57 | Detroit | 171 |
| St. Catharines | 60 | North Bay | 270 |
| Toronto | 65 | Ottawa | 317 |
| Niagara Falls | 68 | Montreal | 405 |

30 Minutes from Seaway Port

Brantford is within 30 minutes by road and rail from the seaway port of Hamilton on Lake Ontario. This harbour provides seaway depth berthing at an ever-increasing number of wharves and terminals. The Port of Hamilton ranks high among Canada's leading seaports in total cargo tonnage handled.

General Statistics

Elevation above sea level - 702 feet
Longitude at City Hall - 80°15' 45"W
Latitude at City Hall - 43°8' 26"N
Incorporated as a Town - 1847
Incorporated as a City - 1877
1975 Population - 68,750*

* City of Brantford Planning Dept., January 1, 1976

THE BRANTFORD DEVELOPMENT COMMISSION

City Hall

BRANTFORD, ONTARIO, CANADA

Industrial Development Data

CLIMATE

SECTION 2

CLIMATE (1975)

| | | |
|---------------------------------|-------|--------|
| Annual Snowfall | 60.1 | inches |
| Annual Rainfall | 31.83 | " |
| Highest Recorded Temperature | 93° | |
| Lowest Recorded Temperature | -6° | |
| Annual Mean Maximum Temperature | 55.2° | |
| Annual Mean Minimum Temperature | 39.7° | |

EXTREMES IN PRECIPITATION

| | | | |
|----------------------------|---------------|------|--------|
| Most rain in one month | August | 5.26 | inches |
| Most rain in one day | September 18 | 1.61 | " |
| Most rain in shortest time | (September 18 | 1.95 | " |
| | (September 20 | 1.95 | " |
| Driest month | October | 1.21 | " |
| Most snow in one month | December | 19.5 | " |
| Most snow in one day | March 7 | 6.60 | " |

EXTREMES IN TEMPERATURE

| | |
|------------------|-----------------|
| Hottest recorded | 93° July 31) |
| | August 1) |
| Coldest recorded | -6° December 22 |

PRECIPITATION & TEMPERATURE MAXIMUM/MINIMUM

| <u>MONTH</u> | <u>MAX TEMP °F</u> | <u>MIN TEMP °F</u> | <u>RAIN (")</u> | <u>SNOW (")</u> |
|--------------|--------------------|--------------------|-----------------|-----------------|
| January | 53 | -3 | 2.11 | 4.2 |
| February | 49 | 0 | 1.40 | 16.2 |
| March | 51 | 0 | 2.17 | 12.5 |
| April | 69 | 18 | 0.71 | 5.0 |
| May | 89 | 38 | 2.48 | |
| June | 89 | 47 | 2.81 | |
| July | 93 | 46 | 4.21 | |
| August | 93 | 46 | 5.26 | |
| September | 75 | 36 | 4.18 | |
| October | 74 | 23 | 1.93 | |
| November | 70 | 23 | 2.69 | 2.7 |
| December | 59 | -6 | 1.88 | 19.5 |

N.B. 1 inch of rain = 10 inches of snow

THE BRANTFORD DEVELOPMENT COMMISSION

City Hall

BRANTFORD, ONTARIO, CANADA

Industrial Development Data

POPULATION

SECTION 3

| <u>YEAR</u> | <u>POPULATION</u> | <u>YEAR</u> | <u>POPULATION</u> |
|-------------|-------------------|-------------|-------------------|
| 1847 | 3,000 | 1930 | 30,103 |
| 1850 | 3,200 | 1940 | 31,135 |
| 1870 | 7,000 | 1950 | 36,532 |
| 1880 | 10,688 | 1960 | 54,093 |
| 1890 | 14,280 | 1970 | 60,704* |
| 1900 | 16,216 | 1974 | 64,421** |
| 1910 | 20,711 | 1975 | 68,750*** |
| 1920 | 30,549 | | |

* Source: Provincial Assessment Dept.
 ** Statistics Canada
 *** City of Brantford Planning Dept., Jan. 1, 1976

CENSUS CANADA Population by Mother Tongue (1971)

AVERAGE WEEKLY WAGES IN THE INDUSTRIAL COMPOSITE (A)

| | | <u>1973</u> | <u>1974</u> | <u>1975</u> | |
|---------------|--------|-------------|-------------|-------------|---------|
| British | 45,140 | | | | |
| French | 2,395 | | | | |
| German | 3,270 | | | | |
| Italian | 2,570 | | | | |
| Netherlands | 1,665 | | | | |
| Polish | 2,505 | | | | |
| Scandinavian | 315 | | | | |
| Ukrainian | 1,735 | | | | |
| Native Indian | 460 | | | | |
| Other | 4,375 | | | | |
| | | BRANTFORD | 150.08 | 167.26 | 191.01* |
| | | ONTARIO | 165.54 | 184.13 | 208.08* |
| | | CANADA | 160.97 | 161.73 | 206.38* |

* Average as of August, 1975

(A) Source: Statistics Canada - Employment Earnings and Hours, October, 1975

THE BRANTFORD DEVELOPMENT COMMISSION

City Hall

BRANTFORD, ONTARIO, CANADA

Industrial Development Data

POPULATION

SECTION 3

POPULATION BREAKDOWN

The following is a population breakdown for the years 1965 to 1975 inclusive, with the percentage figure which each group relates to the total for that particular year:

| | <u>AGE 0-8</u> | <u>AGE 9-15</u> | <u>AGE 16-19</u> | <u>AGE 20-65</u> | <u>AGE 66 & OVER</u> | <u>TOTAL ALL AGES</u> |
|------------|--------------------|----------------------|----------------------|----------------------|------------------------------|---------------------------|
| 1975 | 8,722 | 8,378 | 4,768 | 35,849 | 7,407 | 65,124* |
| PERCENTAGE | 13.39 | 12.86 | 7.32 | 55.05 | 11.37 | |
| 1974 | 8,493 | 8,526 | 4,695 | 34,562 | 7,311 | 63,587 |
| PERCENTAGE | 13.36 | 13.41 | 7.38 | 54.35 | 11.50 | |
| 1973 | 7,604 | 8,258 | 4,662 | 34,057 | 6,864 | 61,445 |
| PERCENTAGE | 12.37 | 13.44 | 7.58 | 55.42 | 11.17 | |
| 1972 | 8,962 | 8,266 | 4,798 | 33,910 | 6,756 | 62,692 |
| PERCENTAGE | 14.29 | 13.18 | 7.65 | 54.08 | 10.77 | |
| 1971 | 8,691 | 8,192 | 4,560 | 33,738 | 6,511 | 61,692 |
| PERCENTAGE | 14.08 | 13.27 | 7.39 | 54.68 | 10.55 | |
| | <u>AGE 0-9</u> | <u>AGE 10-15</u> | <u>AGE 16-19</u> | <u>AGE 20-64</u> | <u>AGE 65 & OVER</u> | <u>TOTAL ALL AGES</u> |
| 1970 | 10,661 | 6,248 | 4,262 | 32,232 | 7,301 | 60,704 |
| PERCENTAGE | 17.56 | 10.29 | 7.02 | 53.09 | 12.02 | |
| 1969 | 11,320 | 7,318 | 4,409 | 32,525 | 6,406 | 61,978 |
| PERCENTAGE | 18.26 | 11.80 | 7.11 | 52.47 | 10.33 | |
| 1968 | 11,544 | 7,182 | 4,298 | 31,645 | 6,339 | 61,008 |
| PERCENTAGE | 18.92 | 11.77 | 7.04 | 51.87 | 10.39 | |
| 1967 | 11,625 | 7,012 | 4,182 | 30,873 | 6,317 | 60,009 |
| PERCENTAGE | 19.37 | 11.68 | 6.97 | 51.44 | 10.53 | |
| 1966 | 11,659 | 6,824 | 4,345 | 30,082 | 6,071 | 58,981 |
| PERCENTAGE | 19.77 | 11.57 | 7.36 | 51.00 | 10.30 | |
| 1965 | 11,495 | 6,832 | 4,051 | 29,578 | 5,911 | 57,867 |
| PERCENTAGE | 19.86 | 11.81 | 7.00 | 51.11 | 10.21 | |

*Information from Assessment Records

PERCENTAGE INCREASE IN POPULATION

| | |
|-----------|-------|
| 1965-1975 | 8.89% |
| 1970-1975 | 9.32% |

THE BRANTFORD DEVELOPMENT COMMISSION

City Hall

BRANTFORD, ONTARIO, CANADA

Industrial Development Data

POPULATION

SECTION 3

BRANTFORD TRADING AREA

Cities, Towns and Townships

| <u>COMMUNITY</u> | <u>DISTANCE</u> | <u>POPULATION (1)</u> |
|-----------------------|-----------------|-----------------------|
| Brantford | --- | 65,124 |
| Paris | 7 miles | 6,364 |
| Simcoe | 24 " | 13,874 |
| Township of Brantford | --- | 9,117 |
| " " South Dumfries | 10 " | 3,974 |
| " " Oakland | 8 " | 1,322 |
| " " Onondaga | 10 " | 1,348 |
| " " Burford | 9 " | 5,691 |
| " " Delhi * | 25 " | 14,619 |
| " " Norfolk * | 20 " | 11,095 |
| | TOTAL | <u>132,528</u> |

(1) Taken from 1976 Provincial
Municipal Directory

* Townships and Towns in the Regional Municipality of
Haldimand-Norfolk under our market influence and
labour pool.

--- Distances of the Townships are based on an approximate
centre to centre measurement between the Townships
concerned and the City of Brantford.

THE BRANTFORD DEVELOPMENT COMMISSION

City Hall

BRANTFORD, ONTARIO, CANADA

Industrial Development Data

MUNICIPAL ADMINISTRATION & FINANCES

SECTION 4

The City Council, Public Utilities Commission, Brant County Board of Education and the Brant County Separate School Board are the elected bodies. City Council is the senior body.

CITY COUNCIL

is composed of the Mayor and ten Aldermen. The City is divided into 5 Wards with 2 Aldermen representing each Ward.

THE PUBLIC UTILITIES COMMISSION

is composed of 1 Commissioner from each Ward plus the Mayor by virtue of office. The P.U.C. is responsible for providing water, hydro and inter-urban bus transportation. The Chairman is elected by the Board.

THE BRANT COUNTY BOARD OF EDUCATION

is composed of 14 trustees elected on a County-wide basis plus 2 appointed representatives from the Brant County Separate School Board (vote only on secondary school matters). The Chairman is elected by the Board annually.

THE BRANT COUNTY SEPARATE SCHOOL BOARD

is composed of 12 trustees elected on a County-wide basis - elementary and secondary education.

ELECTIONS AND TERM OF OFFICE

Elections are held on the first Monday of December every other year.

OUTSIDE BOARDS AND COMMISSIONS (APPOINTED)

Brantford Police Commission
Board of Park Management and Recreation Commission
Glenhyrst Gardens Commission
Brantford Development Commission
Brantford Public Library Board
Brantford Planning Board
Committee of Adjustment
Brant County Board of Health
Board of Governors John Noble Home
Brantford Suburban Roads Commission
Brant Sanatorium Board
Brantford Airport Commission
Landlord and Tenant Advisory Bureau
Civic Centre Committee
Land Assembly & Development Committee
Property Standards Committee
Art Gallery of Brant
Arts Complex Committee
Brantford Centennial Committee

THE BRANTFORD DEVELOPMENT COMMISSION

City Hall

BRANTFORD, ONTARIO, CANADA

Industrial Development Data

MUNICIPAL ADMINISTRATION & FINANCES

SECTION 4

| <u>DEBENTURE DEBT</u> | <u>1974</u> | <u>1975</u> |
|---|-------------------------|-------------------------|
| PAYABLE FROM GENERAL TAXATION | | |
| General | \$ 6,959,787.51 | \$ 6,299,800.85 |
| Schools | <u>3,182,726.86</u> | <u>2,885,463.20</u> |
| | <u>\$ 10,142,514.37</u> | <u>\$ 9,185,264.05</u> |
| | | |
| PAYABLE BY PUBLIC UTILITIES | | |
| Water | 851,250.00 | 741,250.00 |
| Hydro | 166,000.00 | 154,000.00 |
| Transportation | 466,107.65 | 452,776.18 |
| | | |
| RATEPAYERS' SHARE LOCAL IMPROVEMENTS | 1,738,684.84 | 1,545,397.42 |
| | | |
| PAYABLE FROM PARKING REVENUE | <u>220,000.00</u> | <u>200,000.00</u> |
| | | |
| TOTAL DEBENTURE DEBT (ISSUED BY THE CITY) | <u>\$ 13,584,556.86</u> | <u>\$ 12,278,687.65</u> |

PER CAPITA COMPARISONS

| | <u>1974</u> | <u>1975</u> |
|-----------------------------|----------------|----------------|
| Gross debenture debt | \$ 215.51 | \$ 193.10 |
| Net taxable debt | 160.90 | 144.45 |
| Taxable assessment | 158,584,364.00 | 169,018,255.00 |
| Tax levy | 211.41 | 246.59 |
| Tax arrears (previous year) | 9.83 | 13.75 |

THE BRANTFORD DEVELOPMENT COMMISSION

City Hall

BRANTFORD, ONTARIO, CANADA

INDUSTRIAL TAXES IN BRANTFORD, ONTARIO

Taxes levied by the Municipality apply to:

1. Land
2. Buildings
3. Business Tax

LAND ASSESSMENT based upon:

1. Location and services
2. Use of property
3. Other criteria which require the professional estimate of a trained assessment officer

Assessments cannot be expressed accurately as a percentage of the market price since the evaluation standards of the assessment officers do not necessarily coincide with those of realtors. The acreage upon which a building is constructed and the property utilized immediately will be assessed at a higher rate than the unimproved acreage held for future expansion. Each parcel of industrial land, therefore, will be assessed by the same standard for each industry, but will vary according to the percentage of the property improved by construction and use.

BUILDING ASSESSMENT

It is based upon 1945 normal construction costs. In order for us to estimate the assessment of a proposed industrial building, it is necessary to see the specifications. Estimated costs by construction firms cannot be used since there are variations in these estimates.

BUSINESS TAX

In all Ontario Communities, including Brantford, a business tax is applied to all manufacturing industries at a rate of 60%. (This is statutory).

1976 MILL RATE

The mill rate for commercial and industrial properties in Brantford in 1976 is 104.96 mills. This applies in the calculation of land, building and business tax. We will provide an estimate of municipal taxes when the acreage of property and building specifications are provided by any interested Company.

Industrial Development Data

MUNICIPAL TAXES

SECTION 5

INDUSTRIAL TAXES IN BRANTFORD (cont'd)

SAMPLE ONLY

| | |
|---|----------------------------|
| Land 10 acres - Assessment | \$ 16,250. |
| 3 acres - Assessment @ \$2,500 per acre | |
| 7 acres - Assessment @ \$1,250 " " | |
| Building - 40,000 sq. ft. + office - Assessment | \$ 117,730. |
| (Note: Estimated cost of building - \$320,000.) | |
| Land Tax: 7 acres @ 91.33* mills..... | \$ 799.14 |
| 3 acres @ 104.96** " | 787.20 |
| Building tax @ 104.96 mills..... | <u>12,356.94</u> |
| Total - land + building..... | \$ 13,943.28 |
| Business tax - 60% of tax on 3 acres of land + tax on total buildings..... | \$ <u>7,886.48</u> |
| TOTAL TAX..... | <u><u>\$ 21,829.76</u></u> |

* 1976 residential mill rate

** 1976 industrial/commercial mill rate

THE BRANTFORD DEVELOPMENT COMMISSION

City Hall

BRANTFORD, ONTARIO, CANADA

POLICE

A staff of 106 Police Officers and 24 Civilians, under a Chief of Police, comprise the Brantford Police Force.

A fleet of vehicles patrol the City area regularly, and all Police Officers are equipped with radios.

In addition to routine patrols, the Department is prepared to:

- Accept, check telephone calls from plant watchmen and to make an immediate personal investigation should a call not be received on time.
- Escort payrolls from bank to plant or sums of money from plant to bank at no charge.
- Co-operate fully with security guards on company investigations if requested to do so.
- Make surveys on traffic conditions and make recommendations to the Traffic Committee for improvements in traffic safety or traffic flow in any area.
- Train and administer an Auxiliary Police Force under the E.M.O. for local or national emergency.
- Train and maintain adult school crossing guards and juvenile school patrols.

Industrial Development Data

MUNICIPAL SERVICES

SECTION 6

FIRE PROTECTION

The staff consists of a Chief, Deputy Chief, Secretary, 4 Control Room Operators, Fire Prevention Officer, 3 Fire Inspectors, 1 Training Officer, 4 Captains, 12 Lieutenants, 1 Motor Mechanic and 85 full-time Fire Fighters.

EQUIPMENT:

- 1 - 1944 LaFrance Aerial Ladder Truck - 85 Ft. Aerial
- 1 - 1951 King Seagrave Aerial Ladder Truck - 100 Ft. Aerial
- 1 - 1949 Bickle Seagrave Pumper, 750 G.P.M. Class "A"
- 1 - 1955 King Seagrave Pumper, 840 G.P.M. Class "A"
- 1 - 1965 Ford Van Rescue Truck
- 1 - 1959 King Seagrave Pumper, 1050 G.P.M. Class "A"
- 1 - 1965 King Seagrave Pumper, 1050 G.P.M. Class "A"
- 1 - 1970 King Seagrave Pumper, 840 G.P.M. Class "A"
- 1 - 1976 King Seagrave Platform Pumper
- 1 - 1971 G.M.C. Pick-up (Service Truck)
- 1 - 1969 Dodge Polara Sedan (Deputy Chief's Car)
- 1 - 1972 Chevrolet Sedan (Chief's Car)
- 1 - 1968 Chevy II Sedan
- 3 - 1976 Plymouth Dusters - Inspection Bureau
- 1 - 1973 Dodge Maxivan Ambulance (Ont. Hospital owned)
- 1 - 1972 Ford Econoline Ambulance (Ont. Hospital owned)
- 1 - 1975 Dodge Maxivan Ambulance (Ont. Hospital owned)
- 1 - 15 Foot Fibre Glass Boat C/W Trailer and 5 H.P. Motor
- 1 - 16 Foot Aluminum Boat C/W Trailer and 16 H.P. Motor

All equipment, including the ambulances, are equipped with two-way short wave radio. The pumps on the fire equipment are of the most modern large capacity centrifugal design. The trucks are also equipped with modern nozzles and fire fighting chemicals. Added to the central fire station in 1968 was a training building.

Co-operation is extended to all industrial plants where management requests fire protection instruction. Many industrial plant fire brigades have been organized and trained, and films shown to personnel on fire safety and the operation of fire extinguishers. This service is available to all our industries.

THE BRANTFORD DEVELOPMENT COMMISSION

City Hall

BRANTFORD, ONTARIO, CANADA

Industrial Development Data

MUNICIPAL SERVICES

SECTION 6

STREETS AND ROADS

STREET MILEAGE AS OF DECEMBER 31

| <u>PAVEMENT TYPE</u> | <u>1972</u> | <u>1973</u> | <u>1974</u> | <u>1975</u> |
|--|-------------|-------------|-------------|-------------|
| 1. Concrete Surface | 15.4 | 15.4 | 15.1 | 14.6 |
| 2. Bituminous Surface - concrete base | 9.1 | 8.7 | 8.0 | 8.3 |
| 3. High cost Flexible* | 81.8 | 88.1 | 99.3 | 107.7 |
| 4. Low cost Bituminous | 43.4 | 42.3 | 41.4 | 39.8 |
| 5. Surface treated Gravel | 29.2 | 26.2 | 24.2 | 23.2 |
| 6. Surface untreated Gravel | <u>1.8</u> | <u>1.8</u> | <u>3.0</u> | <u>1.8</u> |
| | 180.7 | 182.5 | 191.0 | 195.4 |

*HMST included

PARKING FACILITIES

The City of Brantford has 1106 off-street parking spaces and 711 on-street parking spaces available in the downtown district.

WATER

The City of Brantford obtains its water supply from the Grand River and is assured of an abundant supply throughout the entire year. The capacity of our existing system is 15,000,000 G.P.D. Consumption of water at normal periods is around 8 million G.P.D. peaking to 12 million G.P.D. The treatment process consists of free residual chlorination, aeration, dechlorination, activated carbon for taste and odour control, coagulation and settling using aluminum sulphate and activated silica, Ph control using calcium hydrate, filtration, fluoridation and post treatment of chlorine residual using sulphur dioxide and ammonia. The analysis of the finished water is described on the following page.

Industrial Development Data

MUNICIPAL SERVICES

SECTION 6

WATER ANALYSIS

| | | | |
|---------------------|--------------|---------------------|------------|
| Ph | 7.8-8.2 | Iron | 0 |
| Turbidity less than | J.T.U. | Manganese | 0 |
| Dissolved solids | (300 normal) | Calcium (as Cao) | 89-110 ppm |
| Total Alkalinity | | Mg 0 | 29-80 " |
| (as CaCo3) | (175 ") | SO 4 | 50-70 " |
| Silica - less than | 5 ppm | NO 3 as N | 0.94-2.5" |
| Total Hardness | (310 ") | Organic Nitrogen | 0.94-1.8" |
| (as CaCo3) | | Fluorine (as F) | 1.0 |
| | | Chloramine Residual | 0.3-0.5 " |

RATE SCHEDULE, TWO-MONTH BILLING PERIOD

(Effective October 1, 1976)
(all water rates are net)

The rate consists of a basic charge based on installed meter size, plus a consumption charge for water used.

| <u>METER SIZE</u> | <u>BASIC CHARGE</u> | <u>MINIMUM BILL</u> |
|-------------------|---------------------|---------------------|
| 5/8" | \$ 3.44 | \$ 5.50 |
| 3/4" | 5.14 | 9.24 |
| 1 " | 8.11 | 16.34 |
| 1½ " | 9.78 | 29.99 |
| 2 " | 11.34 | 59.47 |
| 4 " | 36.26 | 191.13 |
| 6 " | 62.96 | 321.62 |
| 8 " | 89.66 | 525.13 |

CONSUMPTION RATES

Consumption charges per 100 cubic feet

| | |
|---------------------------|----------|
| First rate up to 7,200 cf | \$0.29.6 |
| Next 52,800 cf | \$0.22.8 |
| Remaining consumption cf | \$0.18.0 |

Water supply for sprinkler system and fire protection is supplied un-metered at no additional charge. Water connection for this service will be made at the customer's expense.

THE BRANTFORD DEVELOPMENT COMMISSION

City Hall

BRANTFORD, ONTARIO, CANADA

Industrial Development Data

MUNICIPAL SERVICES

SECTION 6

SEWAGE DISPOSAL

The Public Utilities Commission collects Sewer Service charges for the City of Brantford in accordance with By-law 38-68 to cover the operation and maintenance of the Sewage Treatment Plant. The rates are listed below.

| <u>Meter Size</u> | <u>Per Two Months</u> |
|-------------------|-----------------------|
| 5/8" | \$2.48 |
| 3/4" | 4.16 |
| 1" | 7.35 |

Any meter or combination of meters over 1" in size to be billed at 45% of net water account.

GARBAGE - INDUSTRIAL WASTE REMOVAL

Garbage disposal is conducted by sanitary land fill. The Municipality does not provide collection of garbage for industry. However, the handling of industrial waste can be contracted to contractors such as:

| | | |
|------------------------------|---------------------|----------|
| Brantford Disposal Service | 150 Clarence Street | 756-6380 |
| Superior Sanitation Services | 395 Mohawk Road | 753-4840 |
| Lorne Avey | 242 Sheridan Street | 752-3884 |

In the event an industry would prefer to dispose of its own industrial waste, the City dump, located on the south side of the City (Morrison Road) is open daily from 8:00 a.m. to 6:00 p.m. Monday through Friday. Saturday hours are from 8:00 a.m. to 5:00 p.m. Closed Sundays, Christmas Day and New Year's Day; holiday hours are 8:00 a.m. to 5:00 p.m.

THE BRANTFORD DEVELOPMENT COMMISSION

City Hall

BRANTFORD, ONTARIO, CANADA

Industrial Development Data

POWER SOURCES

SECTION 7

HYDRO

POWER SUPPLY

The Public Utilities Commission is prepared to supply electric power to any industry in virtually unlimited quantity upon reasonable notice. At the present time, various industries are supplied with either 27.6 kv, 3 phase, 3 wire; 4,150 volts, 3 phase, 4 wire; and 600 volts, 3 phase. Commercial and industrial establishments are also supplied with 120/208 volts, 3 phase, 4 wire; and 115/230 volts, single phase. The frequency of supply is 60 cycles. The transformer capacity is 120,000 K.V.A. For detailed information, reference should be made to the Public Utilities Commission Office at 50 Wellington Street.

GENERAL SERVICE ELECTRICAL RATES

ENERGY MONTHLY (Billings issued on and after March 1, 1976)

| | |
|------------|--------------------------------|
| First | 50 KW Hrs. @ 5.3¢ per KW Hr. |
| Next | 200 KW Hrs. @ 2.7¢ per KW Hr. |
| Next | 9750 KW Hrs. @ 2.2¢ per KW Hr. |
| Balance of | KW Hrs. @ 1.0¢ per KW Hr. |

KW DEMAND CHARGE MONTHLY

First 50 KW of Demand - No Charge
Next 450 KW of Demand - \$2.40 per KW

Customers above 500 KW to 5000 KW - all energy
@ 0.9¢ per KW Hr. All KW Demand @ \$2.80 per KW

Customers above 5000 KW load - all energy @ 0.7¢ per KW Hr.
All KW Demand @ \$3.65 per KW

Discount for stepdown from distribution voltage - 15¢ per
KW of Billing Demand

Discount for stepdown from subtransmission voltage - 25¢
per KW of Billing Demand

THE BRANTFORD DEVELOPMENT COMMISSION

City Hall

BRANTFORD, ONTARIO, CANADA

Industrial Development Data

POWER SOURCES

SECTION 7

NATURAL GAS

Natural gas service is provided by Union Gas Limited which has been serving Southwestern Ontario for more than 60 years.

SOURCE

The natural gas supplied here comes primarily from Western Canada via the Trans-Canada Pipeline. But it may also come, on occasion, from gas fields located in Southwestern Ontario.

PIPELINES

The City is supplied through a 12-inch diameter high pressure pipeline which connects with the Company's main east-west transmission system. Distribution within the City is by means of a network of street mains and these are constantly being enlarged as the demand warrants.

RELIABLE SERVICE

Union Gas operates extensive underground storage facilities which enable the Company to provide Brantford with more reliable service, particularly during peak demand periods each winter.

GAS CHARACTERISTICS

The natural gas supplied by Union Gas has a normal rating of 1,000 BTU's while the specific gravity is slightly more than half that of air. Hydrogen sulfide and sulfur content range from nil to well below the acceptable maximum.

GENERAL SERVICE RATE FOR ALL COMMERCIAL AND INDUSTRIAL PURPOSES - Monthly fixed charge: \$2.00.

and

First 50,000 cubic feet consumed per month: \$1.5426 per 1000 cubic feet.*
Next 150,000 cubic feet consumed per month: \$1.3926 per 1000 cubic feet.*
Next 13,800,000 cubic feet consumed per month: \$1.2926 per 1000 cubic feet.*
All over 14,000,000 cubic feet consumed per month: \$1.1926 per 1000 cubic feet.*

* By E.B.R.O. #343-1 rate indicated was increased by 43.46¢ per Mcf effective January 23, 1976 on an Interim basis subject to possible adjustment by subsequent final order of the Ontario Energy Board under its Docket E.B.R.O. #343-1.

Other large volume industrial rates may be available through Union Gas Limited.

THE BRANTFORD DEVELOPMENT COMMISSION

City Hall

BRANTFORD, ONTARIO, CANADA

Industrial Development Data

POWER SOURCES

SECTION 7

FUEL OIL

Source of supply: Major refineries in the Bronte and Toronto area.

GRADES OF FUEL OIL AVAILABLE

COST/GALLON

| | |
|----------------|--------------------------------------|
| Stove Oil | 46.5¢ |
| Furnace Oil | 41.8¢ |
| #2 Furnace Oil | (subject to storage and consumption) |

April, 1976

THE BRANTFORD DEVELOPMENT COMMISSION

City Hall

BRANTFORD, ONTARIO, CANADA

BANKS IN BRANTFORD (Main Branches)

| | |
|---|-----------------|
| The Canadian Imperial Bank of Commerce Dalhousie & Market Streets Manager: C.N. Collier | Phone: 752-5477 |
| The Bank of Montreal 57 Market Street Manager: E. West | Phone: 752-7887 |
| The Bank of Nova Scotia 171 Colborne Street Manager: Mike Uniac | Phone: 759-5810 |
| The Royal Bank of Canada 30-32 Market Street Manager: G.C. Grainger | Phone: 753-4121 |
| The Toronto-Dominion Bank 108 Colborne Street Manager: B. Des Roches | Phone: 756-6144 |
| Province of Ontario Savings Bank 138 Dalhousie Street Manager: J. Malcolm | Phone: 753-4131 |

TRUST COMPANIES

| | |
|--|-----------------|
| Canada Permanent Trust Company 70 Market Street Manager: L. Dunsdon | Phone: 759-4020 |
| Crown Trust Company 114 Dalhousie Street Manager: C.M. Corneil | Phone: 752-4393 |
| Equitable Trust-Fidelity Mortgage Co. 28 Market Street Manager: O. Riseborough | Phone: 752-4319 |

FINANCE COMPANIES IN BRANTFORD

| | |
|--|-----------------|
| Associates Financial Services Ltd. 172 Dalhousie Street | Phone: 753-8661 |
| Avco Financial Services 113 Colborne Street | Phone: 756-6317 |

Industrial Development Data

The Survey of Markets 1975/76

Brantford

In Brant county, Ontario.
 On CNR, TH & B, LE & N lines.
 Chamber of Commerce—Jack Mann, general manager,
 77 Charlotte Street N3T 5T6, 519-753-2617.
 Industrial Commissioner—Gordon H. Adams, City Hall,
 519-759-4150.

Market: 17% above national average

| | |
|--------------------------|-----------|
| Retail sales, 1975 | \$167.7m. |
| % Canadian total | 0.34 |
| Per capita | \$2,490 |

Income: 2% below national average

| | |
|--------------------------------------|-----------|
| Personal disposable income, 1975 ... | \$299.3m. |
| % Canadian total | 0.29 |
| Per capita | \$4,440 |

Current Growth Rate: 12% per decade

| | |
|--------------------------------------|-------|
| Population (ODU), June 1, 1975 | 67.4 |
| % Canadian total | 0.30 |
| % Change '71-'75 | +4.66 |

| | | |
|----------------------|--------|--------|
| FAMILIES | 1971 | 1966 |
| No. | 15,868 | 14,788 |
| Aver. no. per family | 3.4 | 3.0 |

| | | |
|------------------------------------|--------|--------|
| HOUSEHOLDS | 1971 | 1966 |
| No. | 19,447 | 17,395 |
| Aver. no. per house- hold | 3.2 | 3.4 |

| | |
|----------------------------|-----------|
| BANKING | |
| Branches, No. (1974) | 17 |
| Cheques cashed: | |
| \$000 (1974) | 3,170,916 |
| \$000 (1970) | 1,785,387 |

POPULATION

| | | |
|-------------------|--------|--------|
| Census: | 1971 | 1966 |
| Male | 32,759 | 29,346 |
| Female | 32,971 | 30,368 |
| Total | 64,421 | 59,854 |
| Age groups, 1971: | Male | Female |
| 0-4 | 2,335 | 2,440 |
| 5-9 | 3,155 | 2,900 |
| 10-14 | 3,116 | 2,580 |
| 15-19 | 3,025 | 3,040 |
| 20-24 | 2,960 | 2,955 |
| 25-34 | 4,050 | 3,880 |
| 35-44 | 3,655 | 3,550 |
| 45-54 | 3,590 | 3,625 |
| 55-64 | 2,975 | 3,105 |
| 65-69 | 965 | 1,285 |
| 70+ | 1,650 | 2,735 |

EARNINGS

| | | | |
|------------|--------|---------------------|--------|
| | | Av. weekly earnings | |
| | | Brantford | Canada |
| | | \$ | \$ |
| 1970 | 117.18 | 124.82 | |
| 1971 | 120.74 | 127.64 | |
| 1972 | 141.00 | 149.52 | |
| 1973 | 134.54 | 166.46 | |
| 1974 | 170.90 | 178.08 | |

EMPLOYMENT

| | | |
|--------------|-----------|--------|
| (1961 = 100) | Brantford | Canada |
| 1970 | 130.8 | 127.1 |
| 1971 | 124.8 | 127.8 |
| 1972 | 129.7 | 129.9 |
| 1973 | 143.7 | 135.9 |
| 1974 | 152.4 | 142.0 |

RACIAL ORIGIN

| | | |
|---------------------|--------|-------|
| | 1971 | % |
| Census | | Total |
| British | 49,140 | 70.0 |
| French | 2,293 | 3.7 |
| German | 2,270 | 3.1 |
| Italian | 2,570 | 4.0 |
| Netherlands | 1,065 | 2.6 |
| Polish | 2,505 | 3.9 |
| Scandinavian | 315 | 0.8 |
| Ukrainian | 1,725 | 2.7 |
| Native Indian | 460 | 0.7 |
| Other | 4,375 | 6.8 |

RELIGION

| | | |
|----------------------|--------|-------|
| | 1971 | % |
| No. | | Total |
| Protestant | 40,565 | 62.9 |
| Roman Catholic | 16,255 | 25.3 |

GOVERNMENT

Mayor and 10 aldermen, elected biennially, in December.

| | | | |
|-------------------------|--------|--------|--------|
| BUILDING PERMITS | 1974 | 1973 | 1972 |
| Value, \$000 .. | 31,840 | 34,703 | 12,982 |

| | | |
|---|--------|-------|
| HOUSING | 1971 | % |
| Census | Total | |
| Occupied dwellings, no. | 10,410 | 100.0 |
| Owned*, no. | 11,945 | 59.5 |
| Median value \$... | 18,651 | |
| Rented, no. | 6,465 | 33.3 |
| Av. monthly rent \$ | 112 | |
| Dwelling, type of: | No. | % |
| Single, detached .. | 12,830 | 66.2 |
| Double house | 725 | 3.7 |
| Row, terrace, etc. .. | 520 | 2.7 |
| Apartments, flats .. | 3,675 | 18.9 |
| Duplexes | 1,640 | 8.4 |
| Mobile | | |
| *For single detached owner-occupied only. | | |

| | | |
|-----------------------------|--------|-------|
| HOUSEHOLD FACILITIES | 1971 | % |
| Census | Total | |
| Occupied dwellings .. | 10,410 | 100.0 |
| Dwellings with: | | |
| Refrigerator | 19,350 | 89.7 |
| Home freezer | 5,910 | 36.4 |
| Television | 16,980 | 97.7 |
| Automobile | 15,330 | 79.0 |
| Furnace heating | 16,745 | 86.3 |
| Fuel: | | |
| Oil | 8,575 | 44.2 |
| Electricity | 956 | 4.9 |
| Coal | 80 | 0.4 |
| Gas | 9,735 | 50.2 |

| | | | |
|---------------------------------------|--------|------|------|
| HOMES BUILT | 1974 | 1973 | 1972 |
| No. | *1,155 | *617 | *528 |
| *Statistics for census agglomeration. | | | |

| | | |
|----------------------------------|--------|-------|
| LABOR FORCE BY OCCUPATION | 1971 | % of |
| Census | Total | |
| Managerial & admin. | 875 | 3.4 |
| Engineering & science .. | 540 | 1.9 |
| Law & social science .. | 195 | 0.7 |
| Religion | 70 | 0.3 |
| Teaching | 870 | 3.0 |
| Medicine & health | 1,180 | 4.1 |
| Art & literary | 1,335 | 0.9 |
| Clerical | 4,596 | 16.0 |
| Sales | 2,710 | 9.5 |
| Service | 3,555 | 10.3 |
| Primary | 460 | 1.7 |
| Processing | 1,570 | 5.5 |
| Machining | 2,126 | 7.4 |
| Product fabricating | 3,910 | 13.6 |
| Construction | 1,246 | 4.3 |
| Transport equipment | 825 | 2.9 |
| Materials handling | 1,005 | 3.5 |
| Miscellaneous | 3,095 | 10.8 |
| All occupations | 25,670 | 100.0 |

| | | |
|---------------------------|--------|------|
| LANGUAGE | 1971 | % |
| Census | Total | |
| Most often spoken at home | | |
| English | 59,665 | 62.5 |
| French | 485 | 0.8 |
| German | 250 | 0.4 |
| Italian | 1,230 | 1.9 |
| Magyar (Hungarian) .. | 559 | 0.9 |
| Polish | 870 | 1.6 |
| Ukrainian | 846 | 0.9 |

| | | |
|---------------------------------|---------|---------|
| MANUFACTURING INDUSTRIES | 1972 | 1964 |
| Plants, no. | 143 | 167 |
| Employees, no. | 11,897 | 12,434 |
| Salaries, wages, \$000 | 93,279 | 74,019 |
| Materials, cost of, \$000 | 185,352 | 158,936 |
| Shipments, value of, \$000 .. | 361,096 | 298,447 |
| Value added, \$000 .. | 184,518 | 144,309 |

| | | |
|-----------------------------------|-------------|----------------|
| RETAIL TRADE | 1968 Census | |
| Total sales, \$000 | 84,302.1 | |
| Stores, no. | 449 | |
| Year-end inventory, \$000 .. | 9,515.2 | |
| Employees, no. | 2,485 | |
| Payroll, total, \$000 | 8,116.8 | |
| By kind of business group: | Stores | Sales (\$'000) |
| Food | 108 | 27,549.2 |
| General | 7 | |
| Automotive | 104 | 23,072.3 |
| Apparel & accessories .. | 64 | 8,859.5 |
| Hardware & home furnishings | 56 | |
| Other | 102 | 12,373.8 |

| | |
|--------------------------|--------|
| PUBLICATIONS | 1975 |
| Newspaper, daily: | |
| 1 exporter (Southam) | |
| Circulation, total | 28,373 |
| city | 18,204 |
| outside | 10,369 |

| |
|------------------------|
| RADIO STATION |
| CKPC, 10,000 watts, |
| CKPC-FM, 50,000 watts. |

| | | |
|--------------------------|--------|-------|
| SCHOOL ATTENDANCE | 1971 | % |
| Census | Total | |
| Population, 5 years + .. | 19,395 | 100.0 |
| Attending full-time: | | |
| Less than Grade 5 | 5,620 | 9.8 |
| Grades 5-8 | 4,970 | 8.4 |
| Grades 9-13 | 5,140 | 8.7 |
| University | 805 | 1.4 |
| Not attending full-time: | | |
| Less than Grade 5 | 2,930 | 4.9 |
| Grades 5-8 | 13,025 | 21.8 |
| Grades 9-13 | 24,160 | 40.7 |
| Some university | 1,605 | 2.7 |
| University degree | 1,155 | 1.9 |

| | | |
|----------------------------|---------|-------|
| TAXATION STATISTICS | 1973 | % of |
| Total | | |
| Under \$2,000 | 9,340 | 21.4 |
| \$2,000-3,000 | 4,068 | 9.3 |
| 3,000-4,000 | 2,859 | 6.8 |
| 4,000-5,000 | 3,178 | 8.0 |
| 5,000-7,000 | 5,349 | 12.5 |
| 7,000-10,000 | 9,160 | 21.6 |
| 10,000-15,000 | 6,909 | 15.4 |
| 15,000-20,000 | 1,597 | 3.7 |
| Over \$20,000 | 747 | 1.7 |
| Total returns, no. | 43,613 | 100.0 |
| Total income (\$000) | 291,421 | |
| Average income, \$ | 6,682 | |
| Total tax (\$900) | 46,661 | |
| Average tax, \$ | 1,468 | |

THE BRANTFORD DEVELOPMENT COMMISSION

City Hall

BRANTFORD, ONTARIO, CANADA

Industrial Development Data

FINANCIAL DATA

SECTION 8

BUYING POWER INDEXES*

| | <u>CITY OF BRANTFORD</u> | <u>BRANTFORD URBAN AREA</u> | <u>COUNTY OF BRANT</u> |
|--|------------------------------|---------------------------------|----------------------------|
| <u>POPULATION 1975</u> | | | |
| 10 year rate of growth | 12% | 12% | 10% |
| Population | 67,400 | 84,000 | 100,600 |
| Households | 21,300 | 26,300 | 30,900 |
| <u>PERSONAL DISPOSABLE INCOME (1975)</u> | | | |
| Total | \$299,300,000. | \$384,300,000. | \$434,200,000. |
| Per Capita | \$4,440. | \$4,570. | \$4,320. |
| <u>RETAIL SALES (1975)</u> | | | |
| Total | \$167,700,000. | \$188,400,000. | \$211,700,000. |
| Per Capita | \$2,490. | \$2,240. | \$2,100. |
| <u>MANUFACTURING</u> | | | |
| Total Value (1972) | \$184,518,000. | | \$221,900,000. |

* The Financial Post Survey of Markets, 1975/76

THE BRANTFORD DEVELOPMENT COMMISSION

City Hall

BRANTFORD, ONTARIO, CANADA

Industrial Development Data

FINANCIAL DATA

SECTION 8

RETAIL TRADE (1975)*

| | <u>BRANTFORD</u> | <u>BRANT</u> |
|---------------------------------|------------------|----------------|
| TOTAL SALES | \$188,400,000. | \$211,700,000. |
| Grocery & Combination Stores | \$ 48,800,000. | \$ 53,100,000. |
| Clothing Stores | 11,400,000. | 14,200,000. |
| Hardware Stores | 700,000. | 1,300,000. |
| Furniture Stores | 5,700,000. | 9,300,000. |
| Drug Stores | 3,900,000. | 4,400,000. |
| Motor Vehicles | 32,100,000. | 32,800,000. |

* The Financial Post Survey of Markets 1975/76

THE BRANTFORD DEVELOPMENT COMMISSION

City Hall

BRANTFORD, ONTARIO, CANADA

CANADIAN NATIONAL RAILWAYS

Facilities of the Canadian National Railways in Brantford are as follows:

YARD

Storage capacity of 400 cars. The C.N.R. operates approximately ten miles of industrial trackage through central Brantford.

TEAM TRACKS

Wadsworth Street - 20 car capacity
Cainsville - 10 car capacity

SCALES & RAMPS

Two loading ramps (handles Piggyback Trailers)
52' 125-ton capacity scale track
20-ton capacity truck scale
5-ton capacity platform scale in freight shed

OVERHEAD CRANES

3-ton capacity electric overhead crane in freight shed
10-ton overhead track crane located just west of the freight shed

FREIGHT OFFICE AND SHED

Located on Wadsworth Street, the shed is capable of handling 30 merchandise cars and is equipped with 1½ ton fork lift truck.

Yard switching is on a 24-hour day basis, Monday through Friday and an 8 hour basis Saturday and Sunday. Cars are inter-switched with the T.H.&B. and L.E.&N. daily.

PASSENGER DEPOTS

Ticket Office - Station - Wadsworth Street Phone: 753-4179

TELEGRAPH OFFICE - 8 Grand River Avenue Phone: 753-3477

EXPRESS

The Express Office is located at the west end of the passenger station and handles Canadian National Express and railway express, also air express and air cargo shipments for TCA. Cartage with pick-up and delivery service is offered on Less-Than-Carload and Carload Freight handled to or from the C.N.R. freight shed.

THE TORONTO, HAMILTON, BUFFALO RAILWAY CO.

The T.H.&B. Railway Company serves the south side of the City entering at Cainsville on the east from Hamilton. The general offices are located in the Railway Station, Hamilton, Ontario. District offices are located in Buffalo, Pittsburg and Port Colborne, Ontario.

YARDS

Mohawk Yard - extending east from Mohawk Street - capacity - 150 cars

Market Street - extending east from Market Street to Eagle Avenue - capacity - 75 cars

TEAM TRACKS

Cainsville, Market Street, West Colborne Street

SCALES AND RAMP

50 foot, 150-ton capacity track scale in Market Street Yard, 2 car ramp at Newport Street

FREIGHT

Daily switching, 5 days per week, additional service as required.

Through manifest freight service to all connections.

PASSENGER

All services from Hamilton. Tickets, information and baggage handling arranged at Brantford Station.

EXPRESS

Railway Express Company operate over our line and provide service in and out of Brantford.

INTERCHANGE

With Lake Erie and Northern and Canadian National Railways at Brantford.

CONNECTIONS

With New York Central System at Waterford; New York Central System at Welland and Canadian Pacific Railway at Hamilton.

BRANTFORD MUNICIPAL AIRPORT

Located on the immediate outskirts of the City of Brantford, the Brantford Municipal Airport offers numerous advantages to area business men. Easy driving distance to the principal centres, it is within easy flying distance of major centres in Canada and the United States.

FLYING TIMES:

| | | | |
|------------|-----------------|-----------|-----------------|
| Toronto | 30 minutes | Detroit | 3 hours 20 min. |
| Pittsburgh | 2 hours 30 min. | Montreal | 1 hour 22 min. |
| Chicago | 3 hours 50 min. | New York | 3 hours 20 min. |
| Cleveland | 2 hours 10 min. | North Bay | 2 hours 10 min. |
| Muskoka | 1 hour 15 min. | | |

THE BRANT NORFOLK AERO CLUB

The Club operates the Brantford Municipal Airport for the City Airport Commission and is equipped to train pilots for private or commercial licenses. The Club is equipped to give instruction in night flying as well as Link and Instrument Training. All instruction is supervised by Government Licensed Instructors.

COMFORTABLE LOUNGE

Lounge facilities are at the disposal of members, and may be used for business conferences when time is an important consideration. A call to the Airport prior to arrival will be all that is needed to arrange the necessary accommodation.

MODERN CAFETERIA

Noon luncheon snacks and coffee are available at the Airport cafeteria. Hours: Open all day until 4:30 p.m., Saturdays open until 5:30 p.m. - also open Sundays.

CHARTER FLIGHTS

The Brant-Norfolk Aero Club can place at the disposal of its members (pilots and non-pilots), competent pilots and fully serviced aircraft for charter flights to fields at major centres. Arrangements for such charter flights can be made with the Airport Manager, Mr. Bob Michalchuk.

Industrial Development Data

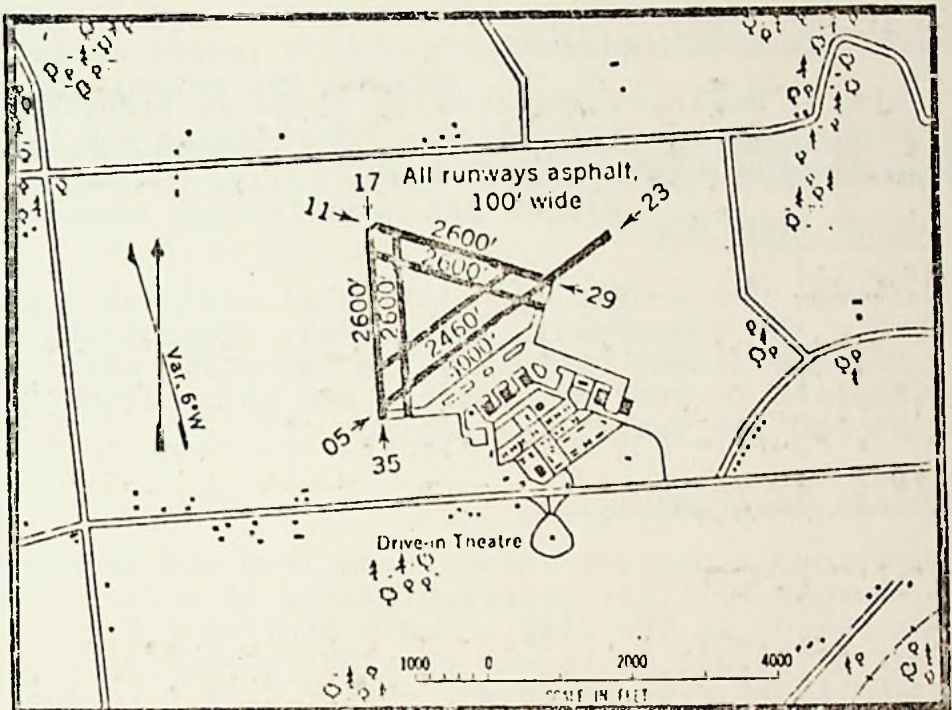
TRANSPORTATION

SECTION 9

BRANTFORD MUNICIPAL AIRPORT (cont'd)

CUSTOMS

The Brantford Municipal Airport is a Canadian Customs Port of Entry. Prior notification of arrival is required for any flight landing at Brantford from the United States.



**BRANTFORD AIRPORT
BRANTFORD, ONT.
ELEV 315'**

LAT. 43°08'N LONG. 80°21'W

4 miles W of Brantford

OPERATOR Corp. of City of Brantford

USABLE All year

LIGHTING Flashing beacon. Runway lights on outer runways available on prior request. Lighting on 2 hr. notice to Brantford Flying Club, Phone (519) 753-2521 or 753-3617 after hours 756-5126.

RADIO AIR GROUND. Call Sign: VYE 85

Trans and Guards 122.8 (Daylight hours)

Operator: Brantford Flying Club.

RADIO NAV. AID. Brantford N.D.B. 4½ N.M. S.W.

IDENT. F.D. 207 KHz

FACILITIES Hangars and Servicing available. GAS: 80/87, 100/130. OIL: 65, 80, 100, 120. Telephone at field. Taxi. Bus and Hotels in Brantford.

REMARKS Licensed airport. Customs port of entry and exit for tourists only. Customs House 4½ miles. One hour prior notice required.

THE BRANTFORD DEVELOPMENT COMMISSION

City Hall

BRANTFORD, ONTARIO, CANADA

Industrial Development Data

CIVIC DATA

SECTION 10

GENERAL

CHURCHES AND DENOMINATIONS

Brantford has churches of all faiths. Protestant, Roman Catholic, Jewish Synagogue, Mormon, Jehovah's Witness, Christian Science, Spiritualist, and the Brantford Corps of the Salvation Army.

BUSINESS AND SERVICE CLUBS

There are 33 business and service clubs in Brantford including women's organizations, Advertising and Sales Club, Shriner's Club and Zonta Club.

CHAMBER OF COMMERCE

A voluntary, non-profit association of citizens organized to promote the commercial, industrial, agricultural and civic welfare of the community. A full-time office staff is maintained to provide services and information to citizens and the travelling public.

NEWSPAPER, RADIO AND T.V.

The Brantford Expositor serves Brantford and area with a daily newspaper. Five representatives of metropolitan dailies reside in the City. Radio Station C.K.P.C.-A.M. operates on 10,000 watts and provides varied programming, world and local news coverage. C.K.P.C.-F.M. operates on 50,000 watts, providing diversified stereo programming for Brantford and district.

HOTELS AND MOTELS

| | |
|-------------------------------|----------|
| Graham Bell Hotel - 36 rooms | 753-3431 |
| Bell City Motel - 23 units | 756-5236 |
| Four Star Motel - 21 units | 753-8424 |
| Grant Motel - 24 units | 753-8451 |
| Jolly Baron Inn - 117 units | 753-7371 |
| Holiday Inn - 123 units | 753-8651 |
| Plaza Motel - 13 units | 759-5648 |
| Mohawk Motel - 23 units | 753-8621 |
| Sherwood Inn Motel - 24 units | 756-5261 |
| Sunset Motel - 10 units | 753-2631 |
| Twin Gates Motel - 13 units | 752-6554 |

THE BRANTFORD DEVELOPMENT COMMISSION

City Hall

BRANTFORD, ONTARIO, CANADA

GENERAL (cont'd)

LIBRARIES

The Brantford Public Library offers a wide range of books (150,000 volumes); long-playing records (3,300); 168 film strips; 362 movie films; 788 micro-films; 352 large print books; children's library; "shut-in" service and a continuing art display.

A Branch Library, officially opened in January, 1975, and located at 441 St. Paul Avenue offers approximately 22,000 books for children and adults.

Industrial Development Data

CIVIC DATA

SECTION 10

HOUSING*

In 1976, new housing accommodation in Brantford was increased by 1,250 units which included 514 single family homes. This was a decrease from 1975 of 663 units. It is noted that over the past five years our housing stock has increased by some 6,117 units.

BUILDING CLASSIFICATION*

| | <u>1975</u> | <u>1976</u> |
|---------------------------------------|---------------|---------------|
| TOTAL NUMBER OF SINGLE DWELLING UNITS | 15,688 | 16,202 |
| Duplexes | 1,358 | 1,550 |
| Triplexes | 128 | 137 |
| Fourplexes | 354 | 382 |
| Conversions to multi-family | 95 | 97 |
| Townhouses | <u>232</u> | <u>491</u> |
| TOTAL NUMBER OF RESIDENTIAL BUILDINGS | 17,855 | 18,859 |
| Number of multi-family units | <u>5,087</u> | <u>5,333</u> |
| TOTAL DWELLING UNITS | <u>22,942</u> | <u>24,192</u> |
| Population per dwelling unit | 3.0 | 2.8 |

* Information obtained from City Engineering Department

EDUCATION

The City of Brantford is in Brant County and the public schools in the City are under the jurisdiction of the Brant County Board of Education.

The Board provides equal educational opportunities for all children from Kindergarten to Grade 13 in all areas of instruction, and the programs are comparable to those in any other Ontario Municipality.

Special education is provided for students with learning disabilities, including a school for the mentally retarded, a school for students suffering from cerebral palsy, and special classes for children with hearing and visual disabilities.

The Board operates six secondary schools, four of which are completely composite. One provides arts and science, business and commerce, and the sixth is a special vocational school for occupational students.

There are 52 elementary schools - 29 in the City and 23 in the surrounding County.

All of these schools are well staffed.

EVENING CLASSES & ADULT EDUCATION

In addition to the regular day classes, evening classes are offered in advanced academic and technical subjects, commercial work, home economics, industrial arts and special subjects such as art, English for New Canadians and Conversational French.

SUMMER SCHOOL PROGRAMS

The Board operates a summer school program with remedial courses and make-up courses during July and August for both elementary and secondary school students.

Further information on the Brant County Elementary and Secondary Schools may be obtained from the Brant County Board of Education, 349 Erie Avenue, 756-6301.

EDUCATION (cont'd)

W. ROSS MACDONALD SCHOOL (formerly Ontario School for the Blind) is located in Brantford on a 42 acre park on number 2 Highway in the north-west section of the City.

In 1973, a new Educational Complex was opened replacing the original school built in 1872 and, at present, 207 students from across Canada are enrolled at the school. A deaf-blind department, opened in 1971, has an enrollment of 27 pupils.

Contained within the school is a 25 yard swimming pool which is on contract to the Brantford Recreation Commission for out of school use.

BRANT COUNTY SEPARATE SCHOOL BOARD

The Brant County R.C. Separate School Board has under its jurisdiction 18 elementary schools with grades from Kindergarten to Grade 10. The total enrollment in the separate schools is approximately 3,580. The Elementary Separate Schools now come under the jurisdiction of the Ministry of Education for the Province of Ontario, with a Director of Education appointed by the Brant County R.C. Separate School Board.

On the secondary level, the school known as St. John's College, located on Paris Road, is co-educational under the joint direction of the Congregation of the Resurrection and the Sisters of Providence. There is an enrollment of 300 students in Grades 11-13 with 33 staff members.

The recent addition is of modern design with open areas, together with a very serviceable library. The general course is offered with options in commercial art, music, classical civilization, Italian, world politics, world religions and French. Grades 11, 12 and 13 were put on an individual timetable basis in September, 1971.

For information regarding the Elementary Schools, Kindergarten to Grade 10, contact the Director of Education of Separate Schools, 322 Fairview Drive, Brantford, Ontario (Telephone 756-6369).

MUNICIPAL PARKS & RECREATION

GENERAL

Public recreation services are administered by the Board of Park Management and Recreation Commission. There are 72 park areas comprising 890 acres of land. These areas are designed to provide a reasonable balance between active recreation areas and ornamental and rest areas. Over 250 acres of additional lands have been acquired for future development.

The Board of Park Management and Recreation Commission is responsible for operating two municipal cemeteries - Mount Hope and Greenwood.

The Department has extensive horticulture and forestry sections. Many beautiful horticultural parks are located throughout the City, with Lorne Park being the showplace. Over 250,000 annuals are planted within the City each year. Street trees, and trees on public property are maintained by the forestry section. Over 1,200 new trees are planted each year to provide future generations with mature trees.

The Board of Park Management and Recreation Commission offers a variety of activities for people of all ages and interests, and can guide you to participation in the following activities and many more: arts and crafts; hiking and touring; bands; camping; community committees; dancing; senior citizens; sports of all kinds; symphony orchestra and drama. A staff of 150 recreation leaders conduct the summer program of the Recreation Commission and a staff of 100 conduct the winter program.

The highlights of the Brantford recreation programs have to be the wide variety of youth activities, the Brantford Memorial Concert Band and the St. John's Girls Drum Corps, providing top entertainment, and a senior citizens second to none in Canada.

There are nine senior citizens clubs in Brantford, eight of them are neighbourhood groups and one is a day centre located downtown. Information can be obtained at the Parks and Recreation Office.

MAJOR RECREATIONAL FACILITIES AND PROGRAM HIGHLIGHTS

BRANTFORD AND DISTRICT CIVIC CENTRE

A 3,000 seat arena and 500 seat auditorium were completed in March, 1967. This facility provides an attractive setting for Brantford's major spectator events and large community activities of all kinds.

MAJOR RECREATIONAL FACILITIES AND PROGRAM HIGHLIGHTS (cont'd)

GLENHYRST GARDENS

A beautifully landscaped former private estate is now the home of Glenhyrst Arts Council, the cultural centre of the district. Activities include an annual antique show, a pantomime, classes in art, ballet, French, and a public Art Gallery.

BELL HOMESTEAD AND HENDERSON HOME

Originally the home of Alexander Graham Bell, inventor of the telephone, the Bell Homestead was the site of the first long distance telephone call. July 26, 1974 marked the centennial of the invention of the telephone in Brantford.

The Henderson Home was donated to the City and moved to its present site in 1969 - originally the home of the Rev. T.P. Henderson, first business agent for the telephone.

There are beautiful grounds and a picnic area at the site of the above two homes.

PARKS

There are 72 park sites containing 890 acres of park land in the City of Brantford.

- 18 horticultural parks
- 44 neighbourhood parks
- 27 softball diamonds - 12 hardball diamonds
- 9 soccer/football fields
- 8 wading pools
- 31 natural ice rink locations including 10 asphalt multi-purpose pads, used as rink sites in winter and tennis in the summer
- 30 community committees
- 8 major recreation centres

- NORTH PARK RECREATION CENTRE - 22 acres
 - 2 arenas
 - enclosed football/soccer field
 - practice football/soccer field
 - floodlit softball diamond
 - hardball diamond
 - track and field facilities
 - field house w/dressing rooms
 - Brant Aquatic Centre
 - 65 metre, 8 lane pool with separate training pool & 10 metre diving tower
 - saunas
 - fitness and health area
 - restaurant

Industrial Development Data

CIVIC DATA

SECTION 10

NORTH PARK RECREATION CENTRE (cont'd)

Future plans - tennis courts

LIONS PARK RECREATION CENTRE - 33 acres

- 1 arena
- enclosed soccer/football field
- enclosed softball diamond (both floodlit)
- 1 practice field
- all-weather track
- 4 tennis courts - floodlit

MOHAWK PARK - 72 acres

- presently being redeveloped
- picnic area
- wading pool, playground
- pavillion
- football/soccer field
- track and field facilities
- lake

WATERWORKS PARK 183.6 acres

- wooded, picnic, nature walks
- soccer/football field
- 2 softball diamonds

COCKSHUTT PARK

- floodlit enclosed baseball diamond with grandstand
- practice baseball diamond and track (home of Cricket Club)

EAGLE PLACE COMMUNITY CENTRE

RESURRECTION SCHOOL COMMUNITY CENTRE

SCHOOLS - schools are available for recreational programs outside of school hours. Non-profit organizations pay caretaker fees only

- school grounds are programmed by Parks and Recreation outside of school hours

GOLF - NORTHRIDGE - 18 holes, watered fairways and club house

- ARROWDALE - 9 holes, club house

- plus 4 private golf courses - 1-18 hole and 3-9 hole

TENNIS - Lions Park - 4 floodlit courts

- Dufferin Club - 6 floodlit courts

- Birkett's Lane - 3 floodlit courts

EARL HAIG POOL

- 50 metre outdoor pool with change facilities

THE BRANTFORD DEVELOPMENT COMMISSION

City Hall

BRANTFORD, ONTARIO, CANADA

Industrial Development Data

LABOUR

SECTION 11

EMPLOYMENT AND AVERAGE WEEKLY WAGES AND SALARIES BY INDUSTRY FOR THE BRANTFORD AREA

| <u>Type of Industry</u> | <u>No. of Employees</u> | <u>Average Weekly Wages and Salaries</u> | | |
|-------------------------|-------------------------|--|---------------|---------------|
| | | <u>Dec/73</u> | <u>Dec/74</u> | <u>Dec/75</u> |
| Manufacturing | 14,400 | \$ 168.74 | \$ 193.68 | \$ 222.09 |
| Durable Goods | 9,200* | 183.64 | 210.65 | 238.56 |
| Non-Durable Goods | 5,200* | 142.87 | 164.63 | 193.21 |
| Industrial Composite | 21,200 | 156.90 | 177.58 | 200.81 |

* Durable Goods and Non-Durable Goods are a breakdown of manufacturing.

Definitions:

INDUSTRIAL COMPOSITE - The sum of the industries.

DURABLE GOODS MANUFACTURING - The sum of wood products, furniture and fixtures, primary metal industries, metal fabricating industries, machinery (except electrical), transportation equipment, electrical products, and non-metallic mineral products.

NON-DURABLE GOODS MANUFACTURING - The sum of the remaining manufacturing industries.

Source: Statistics Canada, Employment Earnings and Hours, January, 1976.

These figures are based on reports from employers of 20 or more employees.

AREA AND DISTANCE INVOLVED

The majority of Brantford employees live either in the City of Brantford or the immediately adjacent areas throughout the County, including the Town of Paris and the Villages of Burford and St. George, which lie about 7 to 9 miles from the centre of Brantford. There is also some commuting to employment in Brantford from those areas of Norfolk, Wentworth and Oxford Counties, lying just outside the Brant County lines. The farthest point in the County is about 18 to 20 miles from the City.

THE BRANTFORD DEVELOPMENT COMMISSION

City Hall

BRANTFORD, ONTARIO, CANADA

LABOUR TURNOVER

This factor varies considerably in different types of industry, but the overall ratio is considered not excessive. For example, a fair-sized heavy industry with a total hourly-rated work force of 800-900 lists -

205 employees with 25 or more years of service
330 employees with 15 or more years of service
25 employees with 10 or more years of service
25 employees with 5 or more years of service
60 employees with 1 or more years of service

In other words, over 50% of the workers have 15 or more years of service.

WORKING HOURS AND STATUTORY HOLIDAYS

Most industrial plants work a 40-hour week on a variety of 1, 2 and 3 shift schedules.

Statutory Holidays are commonly recognized as -

New Year's Day
Good Friday
Victoria Day
Dominion Day
Civic Holiday
Labour Day
Thanksgiving Day
Christmas Day

In addition, Easter Monday and Remembrance Day are recognized as legal, though not public holidays. Many collective agreements list 8 to 10 as paid holidays.

TRAINING FACILITIES AND EDUCATION

Several avenues are available to workers and employers in Brantford for further education and training.

- 1) The Brant County Board of Education offers evening courses in both academic and vocational areas. Special interest courses are also available.
- 2) The Canada Manpower Centre provides upgrading and skill courses through the facilities of the Braneida Campus of Mohawk College.

TRAINING FACILITIES AND EDUCATION (cont'd)

- 3) Mohawk College, Braneida Campus, provides evening courses in technical, vocational and general interest areas. In some cases, students can also avail themselves of the full-time day program sponsored by the Canada Manpower Centre, on a fee paying basis.
- 4) The Canada Manpower Centre, in conjunction with the Provincial Ministry of Education provides financial and technical assistance in establishing on-the-job training programs through the Canada Manpower Industrial Training Program.

Industrial Development Data

INDUSTRIAL DEVELOPMENT

SECTION 12

INDUSTRIAL DEVELOPMENT IN BRANTFORD 1964 - 1975 INCLUSIVE

| <u>YEAR</u> | <u>NEW INDUSTRIES</u> |
|-------------|-----------------------|
| 1964 | 6 |
| 1965 | 7 |
| 1966 | 6 |
| 1967 | 6 |
| 1968 | 2 |
| 1969 | 4 |
| 1970 | 1 |
| 1971 | 3 |
| 1972 | 1 |
| 1973 | 5 |
| 1974 | 3 |
| 1975 | 6 |
| | <hr/> |
| | 50 |
| | <hr/> |

In the 12 year period 1964-75, Building Permit value for some 50 new industries and a multitude of industrial expansions in Brantford totalled \$38,882,554. The capital investment by industry in new and expanded facilities during that period was some 97 million dollars.

The impetus to this phenomenal development is greatly due to municipal and utility co-operation and initiative in providing all necessary services as required.

THE BRANEIDA INDUSTRIAL PARK

BRANEIDA - (Brantford's North-Eastern Industrial Development Area) embracing some 1,000 acres of industrially zoned land is a prime example of the Municipality's intent to co-operate with industrial and new development. Our policy has been to assemble land in advance of need and, then on requirement, fully service blocks and sell in various sized parcels for industrial projects.

In order that there will be no misunderstanding of the term "fully serviced", we mean that the following are provided:

| | |
|-----------------|--------------------|
| storm sewer | sanitary sewer |
| municipal water | natural gas |
| hydro | rail (if required) |
| pavement | curb & gutter |
| street lights | |

Please enquire about our all-inclusive industrial land price.

THE BRANTFORD DEVELOPMENT COMMISSION

City Hall

BRANTFORD, ONTARIO, CANADA

Industrial Development Data

THE BRANTFORD DEVELOPMENT COMMISSION

City Hall

BRANTFORD, ONTARIO, CANADA





3 9154 00167385 4

INDUSTRY IS ON THE MOVE TO

Brantford



*People
like
Brantford*

BRANTFORD DEVELOPMENT COMMISSION
CITY HALL / BRANTFORD, ONTARIO, CANADA