

1974

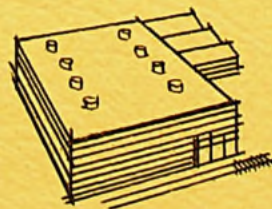
BRANTFORD PUBLIC LIBRARY

MAKE YOUR OWN ASSESSMENT OF

Brantford

HERE ARE THE

facts



**Local
History**

381 S.R.
B

Desk

BRANTFORD INDUSTRIAL COMMISSION
CITY HALL / BRANTFORD, ONTARIO, CANADA

TABLE OF CONTENTS

<u>ITEM</u>	<u>SECTION</u>
LOCATION	1
CLIMATE	2
POPULATION	3
MUNICIPAL ADMINISTRATION & FINANCES	4
MUNICIPAL TAXES	5
MUNICIPAL SERVICES	6
Police	
Fire Protection	
Streets and Roads	
Water	
Sewage	
Garbage - Industrial & Commercial waste	
POWER SOURCES	7
Hydro	
Gas	
Fuel Oil	
Coal	
FINANCIAL DATA	8
TRANSPORTATION FACILITIES	9
Railways	
Truck Transport	
Air Services	
Water Ways	
Customs	
CIVIC DATA - General, Housing, Education Recreation and Hospitals	10
LABOUR	11
INDUSTRIAL DEVELOPMENT	12
INDUSTRIAL LANDS AVAILABLE	12

THE BRANTFORD DEVELOPMENT COMMISSION

City Hall

BRANTFORD, ONTARIO, CANADA

Industrial Development Data

LOCATION

SECTION 1

GENERAL

The City of Brantford, Ontario is centrally located in Canada's most concentrated industrial area which surrounds the westerly end of Lake Ontario. Served by #2, #24, #53 and #54 Provincial Highways, Brantford is directly on #403 Highway, which will eventually project the Queen Elizabeth Way at Hamilton to the east and #401 Highway at Woodstock to the west.

Road Miles - Brantford to:

Galt	17	St. Thomas	74
Hamilton	24	Buffalo	90
Kitchener	26	Oshawa	97
Guelph	31	Owen Sound	113
Oakville	42	Windsor	170
London	57	Detroit	171
St. Catharines	60	North Bay	270
Toronto	65	Ottawa	317
Niagara Falls	68	Montreal	405

30 Minutes from Seaway Port

Brantford is within 30 minutes by road and rail from the seaway port of Hamilton on Lake Ontario. This harbour provides seaway depth berthing at an ever-increasing number of wharves and terminals. The Port of Hamilton ranks high among Canada's leading seaports in total cargo tonnage handled.

BRANIFORD PUBLIC LIBRARY General Statistics

Elevation above sea level - 702 feet
Longitude at City Hall - 80°15' 45"W
Latitude at City Hall - 43°8' 26"N
Incorporated at a Town - 1847
Incorporated as a City - 1877
1973 population - 61,445*

* Assessment Records

THE BRANTFORD DEVELOPMENT COMMISSION

City Hall

BRANTFORD, ONTARIO, CANADA

351
B
C 3 Desk

Industrial Development Data

CLIMATE

SECTION 2

CLIMATE (1973)

Annual Snowfall	48.40 inches
Annual Rainfall	9.72 "
Highest Recorded Temperature	95°
Lowest Recorded Temperature	-13°
Annual Mean Maximum Temperature	56.3°
Annual Mean Minimum Temperature	39.9°

EXTREMES IN PRECIPITATION

Most rain in one month	October	9.5 inches
Most rain in one day	October 29	1.79 "
Most rain in shortest time	October 27-31	3.08 "
Dryest month	August	1.01 "
Most snow in one month	December	20.08 "
Most snow in one day	March 17	7.0

EXTREMES IN TEMPERATURES

Hottest recorded	95° August 28
Coldest recorded	-13° February 17

PRECIPITATION & TEMPERATURE MAXIMUM/MINIMUM

<u>MONTH</u>	<u>MAX TEMP °F</u>	<u>MIN TEMP °F</u>	<u>RAIN (")</u>	<u>SNOW (")</u>
January	55	+1	1.04	2.90
February	47	-13	.62	12.50
March	69	12	5.26	7.0
April	78	21	2.41	1.50
May	75	33	3.08	
June	89	49	1.90	
July	90	48	1.74	
August	95	45	1.01	
September	94	30	1.29	
October	76	31	5.95	
November	63	20	4.15	2.60
December	55	1	1.70	20.80
			<u>30.13</u>	<u>47.30</u>

N.B. 1 inch of rain = 10 inches of snow

THE BRANTFORD DEVELOPMENT COMMISSION

City Hall

BRANTFORD, ONTARIO, CANADA

Industrial Development Data

POPULATION

SECTION 3

<u>YEAR</u>	<u>POPULATION</u>	<u>YEAR</u>	<u>POPULATION</u>
1900	16,276	1960	54,093
1910	21,964	1961	54,984
1920	30,549	1962	54,928
1930	30,153	1963	55,624
1940	31,135	1964	56,611
1950	36,532	1965	57,867
1951	36,602	1966	58,881
1952	36,854	1967	60,009
1953	37,118	1968	61,008
1954	37,229	1969	61,978
1955	50,592 (annex)	1970	60,404
1956	51,612	1971	59,774
1957	52,057	1972	62,107
1958	53,129	1973	62,539 (1)
1959	53,797	1974	63,035

CENSUS CANADA

Population by Mother Tongue - 1971

British	45,140
German	3,270
Italian	2,570
Polish	2,505
French	2,400
Ukranian	1,735
Dutch	1,665
Hungarian	1,580
Asian	450
Scandinavian	315
Russian	50
Other	2,170

AVERAGE WEEKLY WAGES IN THE INDUSTRIAL COMPOSITE (A)

	<u>1971</u>	<u>1972</u>	<u>1973</u>
BRANTFORD	134.44	155.85	150.08*
ONTARIO	143.04	154.30	165.64*
CANADA	137.64	148.68	160.57*

* Average as of August, 1973

(A) Source: Statistics Canada - Employment earnings and Hours, December, 1973

(1) Population figure includes persons in institutions

THE BRANTFORD DEVELOPMENT COMMISSION

City Hall

BRANTFORD, ONTARIO, CANADA

Industrial Development Data

SECTION 3

POPULATION

POPULATION BREAKDOWN

The following is a population breakdown for the years 1963 to 1973 inclusive, with the percentage figure which each group relates to the total for that particular year.

	<u>AGE 0-8</u>	<u>AGE 9-15</u>	<u>AGE 16-19</u>	<u>AGE 20-65</u>	<u>AGE 66 & OVER</u>	<u>TOTAL ALL AGES</u>
1973	7,604	8,258	4,662	34,057	7,014	61,445*
PERCENTAGE	12.54	13.44	7.58	55.42	11.41	
1972	8,762	8,266	4,643	33,910	6,526	62,692
PERCENTAGE	14.11	13.31	7.48	54.60	10.50	
1971	8,691	8,192	4,560	33,738	6,511	61,692
PERCENTAGE	14.08	13.27	7.39	54.7	10.55	
	<u>AGE 0-9</u>	<u>AGE 10-15</u>	<u>AGE 16-19</u>	<u>AGE 20-64</u>	<u>AGE 65 & OVER</u>	<u>TOTAL ALL AGES</u>
1970	10,661	6,248	4,262	32,232	7,301	60,704
PERCENTAGE	16.9	10.29	7.02	53.09	12.02	
1969	11,320	7,318	4,409	32,525	6,406	61,978
PERCENTAGE	18.21	11.80	7.11	52.46	10.33	
1968	11,544	7,182	4,298	31,645	6,339	61,008
PERCENTAGE	18.92	11.77	7.04	51.81	10.39	
1967	11,625	7,012	4,182	30,873	6,317	60,009
PERCENTAGE	19.97	11.58	6.97	51.45	10.53	
1966	11,659	6,824	4,345	30,071	6,071	58,981
PERCENTAGE	19.77	11.57	7.39	50.98	10.30	
1965	11,495	6,832	4,051	29,578	5,911	57,867
PERCENTAGE	19.86	11.81	7.00	51.12	10.21	
1964	11,249	6,694	3,792	29,263	4,513	56,611
PERCENTAGE	19.87	11.83	6.70	51.68	9.92	
1963	11,161	6,517	3,151	28,877	5,599	55,624
PERCENTAGE	20.06	11.77	6.19	51.91	10.07	

* Information from Assessment records

% INCREASE

1963-1973 9.05%
1968-1973 9.93%

THE BRANTFORD DEVELOPMENT COMMISSION

City Hall
BRANTFORD, ONTARIO, CANADA

Industrial Development Data

POPULATION

SECTION 3

BRANTFORD TRADING AREA

Cities, towns and townships

<u>COMMUNITY</u>	<u>DISTANCE</u>	<u>POPULATION (1)</u>
Brantford	---	61,445
Paris	7 miles	6,320
Simcoe	24 "	12,648
Township of Brantford	---	9,082
" " South Dumfries	10 "	3,952
" " Oakland	8 "	1,353
" " Onondaga	10 "	1,368
" " Burford	9 "	5,726
" " Delhi *	25 "	14,667
" " Norfolk *	20 "	10,960
	TOTAL	<u>127,521</u>

(1) Taken from 1974 Provincial
Municipal Directory

* Townships and towns in the Regional Municipality of
Haldimand-Norfolk under our market influence and
labour pool

--- Distance of the Townships are based on an approximate
centre to centre measurement between the townships
concerned and the City of Brantford

THE BRANTFORD DEVELOPMENT COMMISSION

City Hall

BRANTFORD, ONTARIO, CANADA

Industrial Development Data

MUNICIPAL ADMINISTRATION & FINANCES

SECTION 4

The City Council, Public Utilities Commission, Brant County Board of Education and the Brant County Separate School Board are the elected bodies. City Council is the senior body.

CITY COUNCIL

is composed of the Mayor and ten Aldermen. The City is divided into 5 Wards with 2 Aldermen representing each ward.

THE PUBLIC UTILITIES COMMISSION

is composed of 1 Commissioner from each Ward plus the Mayor by virtue of office. The P.U.C. is responsible for providing water, hydro and inter-urban bus transportation. The Chairman is elected by the Board.

THE BRANT COUNTY BOARD OF EDUCATION

is composed of 14 trustees elected on a County wide basis plus 2 appointed representatives from the Brant County Separate School Board (vote only on secondary school matters). The Chairman is elected by the Board annually.

THE BRANT COUNTY SEPARATE SCHOOL BOARD

is composed of 12 Trustees, elected on a county wide basis - elementary and secondary education.

ELECTIONS AND TERM OF OFFICE

Elections are held on the first Monday of December, every other year.

OUTSIDE BOARDS AND COMMISSIONS (APPOINTED)

Brantford Police Commission
Board of Park Management and Recreation Commission
Industrial Waste Committee
Glenhyrst Gardens Commission
Brantford Development Commission
Brantford Public Library Board
Brantford Planning Board
Committee of Adjustment
Brant County Health Unit
Board of Governors John Noble Home
Brantford Suburban Roads Commission
Brant Sanatorium Board
Brantford Airport Commission
Landlord and Tenant Advisory Bureau
Civic Centre Committee
Land Assembly & Development Committee
Housing Standards Committee
Art Gallery of Brantford

THE BRANTFORD DEVELOPMENT COMMISSION

City Hall

BRANTFORD, ONTARIO, CANADA

Industrial Development Data

MUNICIPAL ADMINISTRATION & FINANCES

SECTION 4

<u>DEBENTURE DEPT</u>	<u>1973</u>	<u>1974</u>
PAYABLE FROM GENERAL TAXATION		
General	\$ 7,381,346.17	\$ 6,959,787.51
Schools	<u>3,525,071.87</u>	<u>3,182,726.86</u>
	<u>\$ 10,906,418.04</u>	<u>\$ 10,142,514.37</u>
PAYABLE BY PUBLIC UTILITIES		
Water	961,250.00	851,250.00
Hydro	203,000.00	166,000.00
Transportation	492,451.60	466,107.65
RATEPAYER'S SHARE LOCAL IMPROVEMENTS	1,724,943.95	1,738,684.84
PAYABLE FROM PARKING REVENUE	<u>240,000.00</u>	<u>220,000.00</u>
TOTAL DEBENTURE DEBT (ISSUED BY THE CITY)	<u>\$ 14,528,063.59</u>	<u>\$ 13,584,556.86</u>

PER CAPITA COMPARISONS

	<u>1973</u>	<u>1974</u>
Gross debenture debt	\$228.17	\$215.51
Net taxable debt	171.29	160.90
Taxable assessment	\$153,514,559.00	\$153,605,144.00
Tax levy	\$183.99	
Tax Arrears (previous year)	\$ 15.46	\$ 10.99

THE BRANTFORD DEVELOPMENT COMMISSION

City Hall

BRANTFORD, ONTARIO, CANADA

INDUSTRIAL TAXES IN BRANTFORD, ONTARIO

Taxes levied by the Municipality apply to:

1. Land
2. Buildings
3. Business Tax

LAND ASSESSMENT based upon:

1. Location and services
2. Use of property
3. Other criteria which require the professional estimate of a trained assessment officer.

Assessments cannot be expressed accurately as a percentage of the market price since the evaluation standards of the assessment officers do not necessarily coincide with those of realtors. The acreage upon which a building is constructed and the property utilized immediately will be assessed at a higher rate than the unimproved acreage held for future expansion. Each parcel of industrial land, therefore, will be assessed by the same standard for each industry, but will vary according to the percentage of the property improved by construction and use.

BUILDING ASSESSMENT

It is based upon 1945 normal construction costs. In order for us to estimate the assessment of a proposed industrial building, it is necessary to see the specifications. Estimated costs by construction firms cannot be used since there are variations in these estimates.

BUSINESS TAX

In all Ontario Communities, including Brantford, a business tax is applied to all manufacturing industries at a rate of 60%. (This is statutory).

1974 MILL RATE

The mill rate for commercial and industrial properties in Brantford in 1974 is - 87.88 mills. This applies in the calculation of land, building and business tax. We will provide an estimate of municipal taxes when the acreage of property and building specifications are provided by any interested company.

Industrial Development Data

MUNICIPAL TAXES

SECTION 5

INDUSTRIAL TAXES IN BRANTFORD (cont'd)

SAMPLE ONLY

Land 10 acres - Assessment.....	\$ 16,250.
3 acres - Assessed @ \$2,500 per acre	
7 acres - Assessed @ \$1,250 " "	
Building - 40,000 sq. ft. + office - Assessment.....	\$117,730
(Note: Estimated cost of building - \$320,000.)	
Land Tax: 7 acres @ 76.89* mills.....	\$ 672.79
3 acres @ 87.88** "	659.10
Building tax @ 87.88 mills.....	10,346.11
	<hr/>
Total - land + building.....	\$11,678.00
Business tax - 60% of tax on 3 acres of land + tax on total buildings.....	\$ 6,605.00
	<hr/>
TOTAL TAX.....	18,283.00
	<hr/>

* 1974 residential mill rate

** 1974 industrial/commercial mill rate

THE BRANTFORD DEVELOPMENT COMMISSION

City Hall

BRANTFORD, ONTARIO, CANADA

POLICE

A staff of 103 police officers and 22 civilians, under a Chief of Police, comprise the Brantford Police Force.

A fleet of radio equipped vehicles patrol the City area regularly

In addition to routine patrols, the Department is prepared to:

- Accept, check telephone calls from plant watchmen and to make an immediate personal investigation should a call not be received on time.
- Escort payrolls from bank to plant or sums of money from plant to bank at no charge
- Supply confidential information to personnel selection officers on applicants for positions
- Accept company security guards in police department instruction classes
- Co-operate fully with security guards on company investigations if requested to do so.
- Make surveys on traffic conditions and make recommendations to the Traffic Committee for improvements in traffic safety or traffic flow in any area.
- Train and administer an Auxiliary Police Force under the E.M.O. for local or national emergency
- Train and maintain adult school crossing guards and juvenile school patrols

MUNICIPAL SERVICES

SECTION 6

FIRE PROTECTION

The staff consists of a Chief, Deputy Chief, Secretary, Fire Prevention Officer, 2 Fire Inspectors, 1 Training Officer, 4 Captains, 12 Lieutenants, 1 Motor Mechanic and 76 full-time fire fighters.

EQUIPMENT:

- 1 - 1965 King Seagrave, 1050 G.P.M. Pumper
- 1 - 1959 King Seagrave, 1050 G.P.M. Pumper
- 1 - 1955 King Seagrave, 840 G.P.M. Pumper
- 1 - 1970 Seagrave, (Ford Chassis) 840 G.P.M. Pumper
- 1 - 1949 Seagrave, 750 G.P.M. Pumper
- 1 - 1944 85 Ft. LaFrance Aerial Ladder Truck with 220 ft. of ground ladders
- 1 - 1961 100 ft. King Seagrave Aerial Ladder Truck with 204 ft. of ground ladders
- 1 - 1957 Dodge custom built van rescue or disaster unit, fully equipped with emergency equipment for rescue work

- 1 - 16 ft. aluminium boat with 9.5 H.P. motor
- 1 - 15 ft. fibreglass boat with 5 H.P. motor
- 4 - Sedan cars, 1-1972 Chief's car; 1-1969 Deputy Chief's car and 2-1968 Inspector's cars)
- 1 - 1971 3/4 ton pick-up truck
- 1 - 1972 Ford Econoline ambulance
- 1 - 1969 Pontiac custom built ambulance
- 1 - 1973 Dodge MaxiVan ambulance

All equipment including the ambulances are equipped with two way short wave radio. The pumps on the fire equipment are of most modern large capacity centrifugal design. The trucks are also equipped with modern nozzels and fire fighting chemicals. Added to the central fire station in 1968 was a training building.

The per capita fire loss over the past year was \$68.11 as compared to approximately \$10.98 for Canada. The 10 year period per capita loss was \$10.48. Brantford has been given a Class "A" rating by insurance companies because of our very low loss ratio for all class of risk.

Co-operation is extended to all industrial plants where management requests fire protection instruction. Many industrial plant fire brigades have been organized and trained and films shown to personnel on fire safety and the operation of fire extinguishers. This service is available to all our industries.

Industrial Development Data

MUNICIPAL SERVICES

SECTION 6

STREETS AND ROADS

<u>PAVEMENT TYPE</u>	<u>STREET MILEAGE AS OF DECEMBER 31</u>			
	<u>1970</u>	<u>1971</u>	<u>1972</u>	<u>1973</u>
1. Concrete Surface	15.9	15.6	15.4	15.4
2. Bituminous Surface - concrete base	10.5	9.9	9.1	8.7
3. High cost Flexible*	59.6	74.9	81.8	88.1
4. Low cost bituminous	47.4	44.5	43.4	42.3
5. Surface treated gravel	32.5	31.3	29.2	26.2
6. Surface untreated gravel	<u>1.8</u>	<u>1.8</u>	<u>1.8</u>	<u>1.8</u>
	177.7	178.0	180.7	182.5

* HMST included

PARKING FACILITIES

The City of Brantford has 1106 off-street parking spaces and 730 on-street parking spaces available in the downtown district.

WATER

The City of Brantford obtains its water supply from the Grand River and is assured of an abundant supply throughout the entire year. The capacity of our existing system is 15,000,000 G.P.D. Consumption of water at normal periods is around 8 million G.P.D. peaking to 12 million G.P.D. The treatment process consists of free residual chlorination, aeration, dechlorination, activated carbon for taste and odour control, coagulation and settling using aluminum sulphate and activated silica, Ph control using calcium hydrate, filtration, fluoridation and post treatment of chlorine residual using sulphur dioxide and ammonia. The analysis of the finished water is described on the following page.

THE BRANTFORD DEVELOPMENT COMMISSION

City Hall

BRANTFORD, ONTARIO, CANADA

Industrial Development Data

MUNICIPAL SERVICES

SECTION 6

WATER ANALYSIS

Ph.	7.8-8.2	Iron	0
Turbidity less than	J.T.U.	Manganese	0
Dissolved solids	(300 normal)	Calcium (as Cao)	89-110 ppm
Total Alkalinity		Mg	29- 80
(as CaCo3)	(175 ")	SO 4	50- 70
Silica - less than	5 ppm	NO 3 as N	0.94-2.5
Total Hardness	(310)	Organic Nitrogen	0.94-1.8
(as CaCo3)		Fluorine (asF)	1.0
		Chloramine Residual	0.3-0.5

RATE SCHEDULE, TWO-MONTH BILLING PERIOD

(all water rates are net)

The rate consists of a basic charge based on installed meter size, plus a consumption charge for water used.

<u>METER SIZE</u>	<u>BASIC CHARGE</u>	<u>MINIMUM BILL</u>
5/8"	\$ 3.44	\$ 5.50
3/4"	5.14	9.24
1 "	8.11	16.34
1½ "	9.20	27.24
2 "	10.28	53.31
4 "	32.13	169.14
6 "	55.50	287.38
8 "	78.87	464.41

CONSUMPTION RATES

Consumption charge in cents per 100 cubic feet

First rate up to 7,200 cf	.25¢
Rate between 7,200 and 60,00 cf	.20¢
Rate above 60,000 cf	.15¢

Water supply for sprinkler system and fire protection is supplied un-metered at no additional charge. Water connection for this service will be made at the customers expense.

Industrial Development Data

MUNICIPAL SERVICES

SECTION 6

SEWAGE DISPOSAL

The Public Utilities Commission collects Sewer Service charges for the City of Brantford in accordance with By-law 38-68 to cover the operation and maintenance of the Sewage Treatment Plant. The rates are listed below.

<u>Meter Size</u>	<u>Per Two Months</u>
-----------------------	-------------------------------

5/8"

\$2.48

Any meter or combination of meters over 1" in size to be billed at 45 % of net water account.

GARBAGE - INDUSTRIAL WASTE REMOVAL

Garbage disposal is conducted by sanitary land fill. The Municipality does not provide collection of garbage for industry. However, the handling of industrial waste can be contracted to contractors such as:

Brantford Disposal Service	150 Clarence Street	756-6380
Superior Sanitation Services	395 Mohawk Road	753-4840
Lorne Avey	242 Sheridan Street	752-3884

In the event an industry would prefer to dispose of its own industrial waste, the City dump, located on the south side of the City (Morrison Avenue) is open daily from 7.00 a.m. to 8.00 p.m. Monday through Friday. Saturday hours are from 7.00 a.m. to 7.00 p.m.; Sunday hours are from 11.00 a.m. to 7.00 p.m. and holiday hours are 7.00 a.m. to 7.00 p.m.

THE BRANTFORD DEVELOPMENT COMMISSION

City Hall

BRANTFORD, ONTARIO, CANADA

Industrial Development Data

POWER SOURCES

SECTION- 7

HYDRO

POWER SUPPLY

The Public Utilities Commission is prepared to supply electric power to any industry in virtually unlimited quantity upon reasonable notice. At the present time, various industries are supplied with either 27.6 kv, 3 phase, 3 wire; 4,150 volts, 3 phase, 4 wire; and 600 volts, 3 phase. Commercial and industrial establishments are also supplied with 120/208 volts, 3 phase, 4 wire; and 115/230 volts, single phase. The frequency of supply is 60 cycles. The transformer capacity is 120,000 K.V.A. For detailed information, reference should be made to the Public Utilities Commission Office at 50 Wellington Street.

GENERAL SERVICE ELECTRICAL RATES

ENERGY MONTHLY

First	50 KW Hrs.	@ 4.7¢	per KW Hr.		
Next	200 KW Hrs.	@ 2.1¢	"	"	"
Next	1,750 KW Hrs.	@ 1.8¢	"	"	"
Next	8,000 KW Hrs.	@ 1.25¢	"	"	"
Balance of	KW Hrs.	@ 0.7¢	"	"	"

KW DEMAND CHARGE MONTHLY

First 10 KW of demand - no charge
Next 40 KW of demand - \$1.10 per KW
Next 450 KW of demand - \$2.25 per KW

Customers above 500 KW peak load - all energy @ 0.47¢ per KW Hr. All KW demand @ \$2.75 per KW

Discount for stepdown from distribution voltage -
15¢ per KW of billing demand

Discount for stepdown from sub transmission voltage -
25¢ per KW of billing demand.

THE BRANTFORD DEVELOPMENT COMMISSION

City Hall

BRANTFORD, ONTARIO, CANADA

Industrial Development Data

POWER SOURCES

SECTION 7

NATURAL GAS

Natural gas service is provided by Union Gas Limited - which has been serving southwestern Ontario for more than 60 years.

SOURCE

The natural gas supplied here comes primarily from Western Canada via the Trans-Canada Pipeline. But it may also come, on occasion, from gas fields located in Southwestern Ontario.

PIPELINES

The City is supplied through a 12-inch diameter high pressure pipeline which connects with the Company's main east-west transmission system. Distribution within the City is by means of a network of street mains which is constantly being enlarged as the demand warrants.

RELIABLE SERVICE

Union Gas operates extensive underground storage facilities which enable the Company to provide Brantford with more reliable service -- particularly during peak demand periods each winter.

GAS CHARACTERISTICS

The natural gas supplied by Union Gas has a normal rating of 1,000 BTU's while the specific gravity is slightly more than half that of air. Hydrogen sulfide and sulfur content range from nil to well below the acceptable maximum.

SCHEDULE OF RATES - BRANTFORD AREA

(For residential, commercial and industrial use, per month)

			Gross		Net
First	200 Cubic feet	\$.510%	per C.C.F. \$.510% per C.C.F. *
Next	1,800 Cubic feet	1.10%	per M.C.F. 1.05% per M.C.F. **
Next	8,000 Cubic feet	1.18%	per M.C.F. 1.13% per M.C.F.
Next	90,000 Cubic feet	1.13%	per M.C.F. 1.08% per M.C.F.
Next	400,000 Cubic feet	1.10%	per M.C.F. 1.05% per M.C.F.
Next	500,000 Cubic feet	1.05%	per M.C.F. 1.00% per M.C.F.
Next	1,000,000 Cubic feet	1.00%	per M.C.F.95% per M.C.F.
Next	5,000,000 Cubic feet95%	per M.C.F.90% per M.C.F.
Next	7,000,000 Cubic feet90%	per M.C.F.85% per M.C.F.
All Over....	14,000,000 Cubic feet85%	per M.C.F.80% per M.C.F.

* "PER C.C.F." MEANS PER 100 CUBIC FEET

** "PER M.C.F." MEANS PER 1000 CUBIC FEET

September, 1974

THE BRANTFORD DEVELOPMENT COMMISSION

City Hall

BRANTFORD, ONTARIO, CANADA

Industrial Development Data

POWER SOURCES

SECTION 7

FUEL OIL

Source of supply: Major refineries in the Bronte and Toronto Area.

GRADES OF FUEL OIL AVAILABLE

COST/GALLON

Stove Oil	39.7 ¢
Furnace Oil	35.5 ¢
#2 Furnace Oil	(subject to storage and consumption)

Industrial Development Data

FINANCIAL DATA

SECTION 8

BANKS IN BRANTFORD (Main Branches)

The Canadian Imperial Bank of Commerce Phone: 752-5477
Dalhousie & Market Streets
Manager: H.G. Smith

The Bank of Montreal Phone: 752-7887
57 Market Street
Manager: Mr. E. West

The Bank of Nova Scotia Phone: 759-5810
171 Colborne Street
Manager: M.J.B. Hartman

The Royal Bank of Canada Phone: 753-4121
30-32 Market Street
Manager: L.A. Wright

The Toronto-Dominion Bank Phone: 756-6144
108 Colborne Street
Manager: B. DesRoche

Province of Ontario Savings Bank Phone: 753-4131
138 Dalhousie Street
Manager: J. Malcolm

TRUST COMPANIES

Canada Permanent Trust Company Phone: 759-4020
70 Market Street
Manager: L. Dunstan

Crown Trust Company Phone: 752-4393
114 Dalhousie Street
Manager: C.M. Corneil

Equitable Trust-Fidelity Mortgage Co. Phone: 752-4319
28 Market Street
Manager: D.J. Usselman

FINANCE COMPANIES IN BRANTFORD

Associates Finance Phone: 753-8661
172 Dalhousie Street

Avco Financial Services Phone: 756-6317
113 Colborne Street

Beneficial Finance System Phone: 753-4195
163 Colborne Street

THE BRANTFORD DEVELOPMENT COMMISSION

City Hall

BRANTFORD, ONTARIO, CANADA

Industrial Development Data

FINANCIAL DATA

SECTION 8

FINANCE COMPANIES (cont'd)

Canadian Acceptance Corporation Ltd. Phone: 753-3111
40 Market Street

Citizens Finance Co. of Canada Ltd. Phone: 752-6562
146½ Colborne Street

Household Finance Co. of Canada Ltd. Phone: 752-6562
118 Colborne Street

Industrial Acceptance Corporation Ltd. Phone: 752-3773
233 Colborne Street

Niagara Finance Co. Ltd. Phone: 752-7863
233 Colborne Street

Pacific Finance Acceptance Co. Ltd. Phone: 752-5426
169 Colborne Street

COLLECTION AGENCY

Credit Bureau Phone: 753-7311
154 Dalhousie Street

THE BRANTFORD DEVELOPMENT COMMISSION

City Hall

BRANTFORD, ONTARIO, CANADA

The Survey of Markets 1974/75

Brantford

*In Brant county, Ontario.
On CNR, TH & B, LE & N lines.
Chamber of Commerce—Jack Mann, general manager,
77 Charlotte Street. 519-753-2617.
519-759-4150.
Industrial Commissioner—Gordon H. Adams, City Hall.
519-759-4150.*

Market: 16% above national average

Retail sales, 1974	\$147.3m.
% Canadian total	0.34
Per capita	\$2,210

Income: same as national average

Personal disposable income, 1974	\$261.4m.
% Canadian total	0.30
Per capita	\$3,920

Current Growth Rate: 12% per decade

Population (000), June 1, 1974	66.6
% Canadian total	0.30
% Change, '71-'74	+3.42

FAMILIES

No.	1971	1966
Aver. no. per family	15,966	14,798
	3.4	3.6

HOUSEHOLDS

No.	1971	1966
Aver. no. per household	19,447	17,395
	3.2	3.4

BANKING

Branches, no. (1973)	15
Cheques cashed:	
\$000 (1973)	2,572,036
\$000 (1969)	1,569,803

HOMES BUILT

No.	1973	1972	1971
	*617	*528	624

*Statistics for census agglomeration.

HOUSING

	1971	%
	Census	Total
Occupied dwellings, no.	19,410	100.0
Owned*, no.	11,545	59.5
Median value \$	18,651	
Rented, no.	6,465	33.3
Av. monthly rent \$	112	
Dwelling, type of: No. %		
Single, detached	12,850	66.2
Double house	725	3.7
Row, terrace, etc.	520	2.7
Apartments, flats	3,675	18.9
Duplexes	1,640	8.4
Mobile		

*For single detached owner-occupied only.

GOVERNMENT
Mayor and 10 aldermen, elected biennially, first Monday in December.

POPULATION

Census:	1971	1966
Male	31,750	29,346
Female	32,671	30,508
Total	64,421	59,854
Age groups, 1971:	Male	Female
0-4	2,585	2,440
5-9	3,185	2,960
10-14	3,110	2,890
15-19	3,025	3,040
20-24	2,980	2,955
25-34	4,050	3,880
35-44	3,655	3,650
45-64	3,590	3,625
55-64	2,975	3,105
65-69	965	1,285
70+	1,650	2,735

RACIAL ORIGIN

	1971	%
	Census	Total
British	45,140	70.0
French	2,395	3.7
German	3,270	5.1
Italian	2,570	4.0
Netherlands	1,665	2.6
Polish	2,505	3.9
Scandinavian	315	0.5
Ukrainian	1,735	2.7
Native Indian	460	0.7
Other	4,375	6.8

RELIGION

	1971	%
	No.	Total
Protestant	40,565	62.9
Roman Catholic	16,335	25.3

SCHOOL ATTENDANCE

	1971	%
	Census	Total
Population, 5 years +	59,395	100.0
Attending full-time:		
Less than Grade 5	5,620	9.5
Grades 5-8	4,970	8.4
Grades 9-13	5,140	8.6
University	805	1.4
Not attending full-time:		
Less than Grade 5	2,930	4.9
Grades 5-8	13,025	21.9
Grades 9-13	24,160	40.7
Some university	1,605	2.7
University degree	1,155	1.9

MANUFACTURING INDUSTRIES

	1971	1967
Plants, no.	155	169
Employees, no.	11,456	13,319
Salaries, wages, \$000	82,587	73,899
Materials, cost of, \$000	166,910	171,730
Shipments, value of, \$000	307,395	308,365
Value added, \$000	162,093	149,489

PUBLICATIONS

Newspaper, daily: Expositor (Southam)	1974
Circulation, total	27,840
city	17,194
outside	10,646

BUILDING PERMITS

Value, \$000	1973	1972	1971
	34,703	12,962	7,978

LANGUAGE

Most often spoken at home

	1971	%
	Census	Total
English	59,805	92.5
French	485	0.8
German	280	0.4
Italian	1,250	1.9
Magyar (Hungarian)	550	0.8
Polish	870	1.4
Ukrainian	545	0.9

EARNINGS

	Av. weekly earnings	
	Brantford	Canada
	\$	\$
1969	110.57	117.64
1970	117.18	126.82
1971	128.74	137.64
1972	141.90	149.22
1973	154.54	160.10

EMPLOYMENT

(1961 = 100)

	Brantford	Canada
	1971	1971
1969	137.7	129.9
1970	130.8	127.1
1971	124.8	127.8
1972	123.7	129.9
1973	143.7	139.0

RADIO STATION

CKPC, 10,000 watts.
CKPC-FM, 50,000 watts.

RETAIL TRADE

1966 Census

Total sales, \$000	84,302.1
Stores, no.	449
Year-end inventory, \$000	9,515.2
Employee, no.	2,485
Payroll, total, \$000	8,116.6

By kind of business group:

	No.	Sales (\$000)
Food	108	22,549.2
General	7
Automotive	108	28,032.2
Apparel & accessories	68	8,889.5
Hardware & home furnishings	56
Other	102	12,373.8

TAXATION STATISTICS

	1972	% of
	Total	Total
Income class:		
Under \$2,000	9,612	23.1
\$2,000-3,000	3,765	9.1
3,000-4,000	3,808	9.2
4,000-5,000	3,655	8.8
5,000-7,000	5,833	14.0
7,000-10,000	8,693	20.9
10,000-15,000	4,501	10.8
15,000-20,000	881	2.4
Over \$20,000	710	1.7
Total returns, no.	41,558	100.0
Total income (\$000)	249,632	
Average income, \$	5,007	
Total tax (\$000)	40,332	
Average tax, \$	1,266	

Industrial Development Data

FINANCIAL DATA

SECTION 8

BUYING POWER INDEXES*

	<u>CITY OF BRANTFORD</u>	<u>BRANTFORD URBAN AREA</u>	<u>COUNTY OF BRANT</u>
<u>POPULATION 1973</u>			
10 year rate of growth	14%	13%	12%
Population	65,700	81,900	98,400
Households	20,124	24,900	29,200
<u>PERSONAL DISPOSABLE INCOME (1973)</u>			
Total	\$229,500,000.	\$294,700,000.	\$321,500,000.
Per Capita	\$3,490	\$3,600	\$3,270
<u>RETAIL SALES (1973)</u>			
Total	\$137,100,000	\$154,000,000	\$173,000,000.
Per Capita	\$2,090	\$1,880	\$1,760
<u>MANUFACTURING</u>			
Total Value (1970)	\$141,879,000		\$173,928,000

* The Financial Post Survey of Markets, 1973/74

THE BRANTFORD DEVELOPMENT COMMISSION

City Hall

BRANTFORD, ONTARIO, CANADA

Industrial Development Data

FINANCIAL DATA

SECTION 8

RETAIL TRADE (1973)*

	<u>BRANTFORD.</u>	<u>BRANT</u>
TOTAL SALES	\$154,000,000.	\$173,700,000.
Grocery & Combination Stores	\$ 36,000,000	\$ 39,200,000.
Clothing Stores	9,200,000.	11,500,000.
Hardware Stores	600,000.	1,100,000.
Furniture Stores	5,100,000.	8,300,000.
Drug Stores	3,100,000.	3,500,000.
Motor Vehicles	28,100,000.	28,800,000.

* The Financial Post Survey of Markets 1973/74

THE BRANTFORD DEVELOPMENT COMMISSION

City Hall

BRANTFORD, ONTARIO, CANADA

Industrial Development Data

TRANSPORTATION

SECTION 9

CANADIAN NATIONAL RAILWAYS

Facilities of the Canadian National Railways in Brantford are as follows:

YARD

Storage capacity of 400 cars. The C.N.R. operates approximately ten miles of industrial trackage through central Brantford.

TEAM TRACKS

Wadsworth Street - 20 car capacity
Cainsville - 10 car capacity

SCALES & RAMPS

Two loading ramps (handles Piggyback Trailers)
52' 125-ton capacity scale track
20-ton capacity truck scale
5-ton capacity platform scale in freight shed

OVERHEAD CRANES

3-ton capacity electric overhead crane in freight shed
10-ton overhead track crane located just west of the freight shed

FREIGHT OFFICE AND SHED

Located on Wadsworth Street, the shed is capable of handling 30 merchandise cars and is equipped with 1½ ton fork lift truck.

Yard switching is on a 24-hour day basis, Monday through Friday and an 8 hour basis Saturday and Sunday. Cars are inter-switched with the T.H.&B. and L.E.&N. daily.

PASSENGER DEPOTS

Ticket Office - Station - Wadsworth Street Phone: 753-4179

TELEGRAPH OFFICE - 8 Grand River Avenue Phone: 753-3477

EXPRESS

The Express Office is located at the west end of the passenger station and handles Canadian National Express and railway express, also air express and air cargo shipments for TCA. Cartage with pick-up and delivery service is offered on Less-Than-Carload and Carload Freight handled to or from the C.N.R. freight shed.

THE BRANTFORD DEVELOPMENT COMMISSION

City Hall

BRANTFORD, ONTARIO, CANADA

TRANSPORTATION

SECTION 9

THE TORONTO, HAMILTON, BUFFALO RAILWAY CO.

The T.H.&B. Railway Company serves the south side of the City entering at Cainsville on the east from Hamilton. The general offices are located in the Railway Station, Hamilton, Ontario. district offices are located in Buffalo, Pittsburgh and Port Colborne, Ontario.

YARDS

Mohawk Yard - extending east from Mohawk Street -
capacity - 150 cars

Market Street - extending east from Market Street to
Eagle Avenue - capacity - 75 cars

TEAM TRACKS

Cainsville, Market Street, West Colborne Street

SCALES AND RAMP

50 foot, 150-ton capacity track scale in Market Street
Yard, 2 car ramp at Newport Street

FREIGHT

Daily switching, 5 days per week, additional service
as required.

Through manifest freight service to all connections.

PASSENGER

All services from Hamilton. Tickets, information and
baggage handling arranged at Brantford Station.

EXPRESS

Railway Express Company operate over our line and provide
service in and out of Brantford.

INTERCHANGE

With Lake Erie and Northern and Canadian National
Railways at Brantford.

CONNECTIONS

With New York Central System at Waterford: New York
Central System at Welland and Canadian Pacific Railway
at Hamilton.

TRANSPORTATION

SECTION 9

BRANTFORD MUNICIPAL AIRPORT

Located on the immediate outskirts of the City of Brantford, the Brantford Municipal Airport offers numerous advantages to area business men. Easy driving distance to the principle centres, it is within easy flying distance of major centres in Canada and the United States.

FLYING TIMES:

Toronto	30 minutes	Detroit	3 hours 20 min.
Pittsburgh	2 hours 30 min.	Montreal	1 hour 22 min.
Chicago	3 hours 50 min.	New York	3 hours 20 min.
Cleveland	2 hours 10 min.	North Bay	2 hours 10 min.
Muskoka	1 hour 15 min.		

THE BRANT NORFOLK AERO CLUB

The club operates the Brantford Municipal Airport for the City Airport Commission and is equipped to train pilots for private or commercial pilots licenses. The club is equipped to give instruction in night flying as well as Link and Instrument Training. All instruction is supervised by Government Licensed Instructors.

COMFORTABLE LOUNGE

Lounge facilities are at the disposal of members, and may be used for business conferences when time is an important consideration. A call to the Airport prior to arrival will be all that is needed to arrange the necessary accommodation.

MODERN CAFETERIA

Noon luncheon snacks and coffee are available at the Airport cafeteria. Hours: Open all day till 4:30 p.m., Saturdays open till 5.30 p.m. -- also open Sundays.

CHARTER FLIGHTS

The Brant-Norfolk Aero Club can place at the disposal of its members (pilots and non-pilot), competent pilots and fully serviced aircraft for charter flights to fields at major centres. Arrangements for such charter flights can be made with the Airport Manager, Mr. Terry Patton.

Industrial Development Data

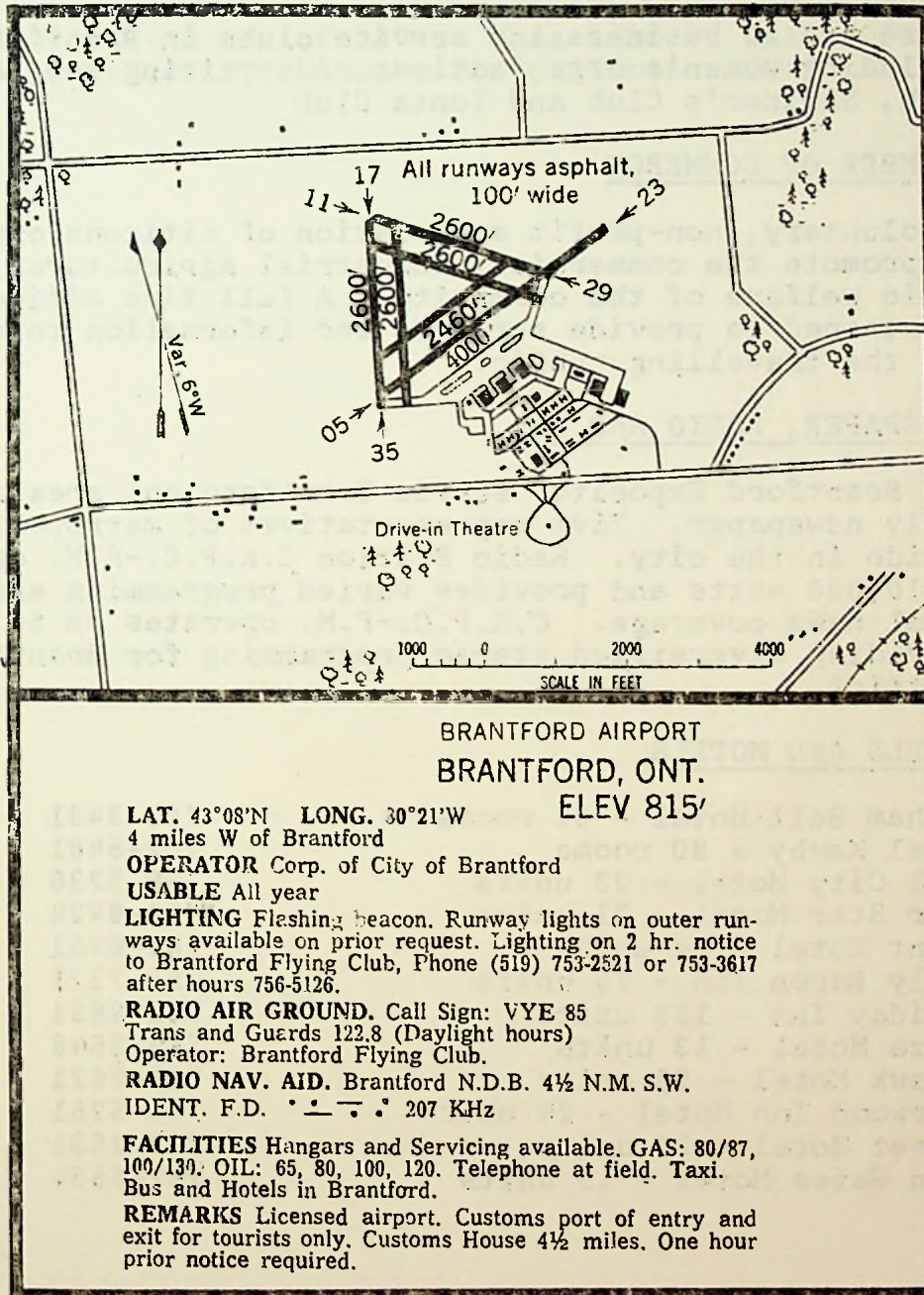
TRANSPORTATION

SECTION 9

BRANTFORD MUNICIPAL AIRPORT (Cont'd)

CUSTOMS

The Brantford Municipal Airport is a Canadian Customs Port of Entry. Prior notification of arrival is required for any flight landing at Brantford from the United States.



JUNE, 1969

THE BRANTFORD DEVELOPMENT COMMISSION

City Hall

BRANTFORD, ONTARIO, CANADA

GENERAL :

CHURCHES AND DENOMINATIONS

Brantford has churches of all faiths; Protestant; Roman Catholic; Jewish Synagogue, Mormon, Jehovah's Witness, Christian Science, Spiritualist, and the Brantford Corps of the Salvation Army.

BUSINESS AND SERVICE CLUBS

There are 33 business and service clubs in Brantford including women's organizations, Advertising and Sales Club, Shriner's Club and Zonta Club

CHAMBER OF COMMERCE :

A voluntary, non-profit association of citizens organized to promote the commercial, industrial agricultural and civic welfare of the community. A full time office staff is maintained to provide services and information to citizens and the travelling public.

NEWSPAPER, RADIO AND T.V.

The Brantford Expositor serves Brantford and area with a daily newspaper. Five representatives of metropolitan dailies reside in the city. Radio Station C.K.P.C.-A.M. operates on 10,000 watts and provides varied programming and world and local news coverage. C.K.P.C.-F.M. operates on 50,000 watts, providing diversified stereo programming for Brantford and district.

HOTELS AND MOTELS

Graham Bell Hotel - 36 rooms	753-3431
Hotel Kerby - 80 rooms	752-5481
Bell City Motel - 23 units	756-5236
Four Star Motel - 21 units	753-8424
Grant Motel - 24 units	753-8451
Jolly Baron Inn - 75 units	753-7371
Holiday Inn - 123 units	753-8651
Plaza Motel - 13 units	759-5648
Mohawk Motel - 23 units	753-8621
Sherwood Inn Motel - 24 units	756-5261
Sunset Motel - 10 units	753-2631
Twin Gates Motel - 13 units	752-6554

CIVIC DATA

SECTION 10

GENERAL (cont'd)

LIBRARY

The Brantford Public Library offers a wide range of books (124,511 volumes); long playing records (3,194); 168 film strips; 344 movie films; 589 micro-films; 224 large print books; children's library, "shut-in" service and a continuing art display. Now under construction in the north end of Brantford is a branch library which is expected to be open by the end of 1974. This library will offer approximately 15,000 books for children and adults.

Industrial Development Data

CIVIC DATA

SECTION 10

HOUSING*

In 1973, new housing accommodation in Brantford was increased by 1,557 units which included 326 single family homes. This was an increase over 1972 of 1,065 units. It is noted that over the past five years our housing stock has increased by some 3,615 units.

For further development, we currently have a number of serviced lots available for new residential building as the market demands.

BUILDING CLASSIFICATION*

	<u>1972</u>	<u>1973</u>
TOTAL NUMBER OF SINGLE DWELLING UNITS	14,503	14,829
Duplexes	units-- 1,144	1,182
Triplexes	" 113	125
Fourplexes & sixplexes	" 270	330
Conversions to Multi-Family	" 32	50
TOTAL NUMBER OF RESIDENTIAL BUILDINGS	16,062	16,516
Number of Multi-Family Units	<u>2,505</u>	<u>3,608</u>
TOTAL DWELLING UNITS	<u>18,567</u>	<u>20,124</u>
Population per dwelling unit	3.5	3.2

* Information obtained from City Engineer's Report, 1973

Industrial Development Data

CIVIC DATA

SECTION 10

EDUCATION

The City of Brantford is in Brant County and the public schools in the City are under the jurisdiction of the Brant County Board of Education.

The Board provides equal educational opportunities for all children from kindergarten to Grade 13 in all areas of instruction, and the programmes are comparable to those in any other Ontario municipality.

Special Education is provided for students with learning disabilities, including a school for the mentally retarded as well as a school for students suffering from Cerebral Palsy.

The Board operates six secondary schools, four of which are completely composite, -- one provides arts and science and business and commerce, and the sixth is a special vocational school for occupational students.

There are 52 elementary schools - 29 in the City and 23 in the surrounding county.

All of these schools are well staffed and provided with special assistance by well trained supervisors.

Evening Classes & Adult Education

In addition to the regular day classes, evening classes are offered in advanced academic and technical subjects, commercial work, home economics, industrial arts and special subjects such as art, English for New Canadians and Conversational French.

Further information on the Brant County Elementary Schools and Secondary Schools can be obtained from the Brant County Board of Education, 351 Erie Avenue, 756-6301.

W. ROSS MACDONALD SCHOOL (formerly Ontario School for the Blind) is located in Brantford on a 42 acre park on number 2 Highway in the north-west section of the City.

In 1973 a new Educational Complex was opened replacing the original school built in 1872, and at present 221 students from across Canada are enrolled at the school. A deaf-blind department, opened in 1971, has an enrolment of 15 pupils.

Contained within the school is a 25 yard swimming pool which is open to the public after school hours.

THE BRANTFORD DEVELOPMENT COMMISSION

City Hall

BRANTFORD, ONTARIO, CANADA

EDUCATION - BRANT COUNTY SEPARATE SCHOOL BOARD

The Brant County R.C. Separate School Board has under its jurisdiction 18 elementary schools with grades from kindergarten to grade 10. The total enrolment in the separate schools is approximately 3,580.

The Elementary Separate Schools now come under the jurisdiction of the Department of Education for the Province of Ontario, with a Superintendent appointed by the Brant County R.C. Separate School Board.

On the Secondary level, the school known as St. John's College located on Paris Road, is co-educational under the joint direction of the Congregation of the Resurrection and the Sisters of Providence. There is an enrolment of 300 students in grades 11-13 with 33 staff members.

The recent addition is of modern design with open areas together with a very serviceable library. The general course is offered with options in commercial art, music, classical civilization, Italian, world politics, world religions and French. Grades 11, 12 and 13 were put on an individual timetable basis in September, 1971.

For information regarding the elementary schools, kindergarten to grade 10, please contact the Superintendent of Separate Schools, 322 Fairview Drive, Brantford, Ontario. Telephone 756-6369.

MUNICIPAL PARKS & RECREATION

GENERAL

Public recreation services are administered by the Board of Park Management and Recreation Commission. There are 71 park areas comprising 860 acres of land. These areas are designed to provide a reasonable balance between active recreation areas and ornamental and rest areas. Over 250 acres of additional lands have been acquired for future development.

Public school grounds are used as public parks after school hours; permits are issued by the Board of Park Management and Recreation Commission in the same way as for public parks. The school buildings are rented directly by the Board of Education or through the Recreation Commission, depending on the use. Non-profit organizations pay caretaker's fees only.

The Board of Park Management and Recreation Commission offers a variety of activities for people of all ages and interests, and can guide you to participation in the following activities and many more: arts and crafts; hiking and touring; bands; camping; community committees; dancing; senior citizens; sports of all kinds; symphony orchestra and drama. A staff of 135 recreation leaders conduct the summer program of the Recreation Commission and a staff of 50 conduct the winter program.

The highlights of the Brantford recreation programs have to be the wide variety of youth activities, the Brantford Memorial Concert Band and the St. John's Girls Drum Corps, providing top entertainment and a senior citizens program second to none in Canada.

There are four senior citizens clubs in Brantford, three of them are neighbourhood groups and one is a day centre, located downtown. Information can be obtained at the Parks and Recreation Office.

MAJOR RECREATIONAL FACILITIES AND PROGRAM HIGHLIGHTS

Brantford and District Civic Centre

A new 3,000 seat arena and 500 seat auditorium was completed in March, 1967. This facility provides an attractive setting for Brantford's major spectator events and large community activities of all kinds.

Industrial Development Data

CIVIC DATA

SECTION 10

MAJOR RECREATIONAL FACILITIES AND PROGRAM HIGHLIGHTS (cont'd)

GLENHYRST GARDENS

A beautifully landscaped former private estate now the home of Glenhyrst Arts Council - the cultural centre of the district. Activities include an annual arts ball, an antique show, a pantomime, classes in art, ballet and French and a Public Art Gallery.

BELL HOMESTEAD AND HENDERSON HOME

Originally the home of Alexander Graham Bell, inventor of the telephone, the Bell Homestead was the site of the first long distance telephone call. July 26, 1974 marked the centennial of the invention of the telephone in Brantford.

The Henderson Home was donated to the City and moved to its present site in 1969 - originally the home of the Rev. T.P. Henderson, first business agent for the telephone

There are beautiful grounds and a picnic area at the site of the above two homes.

PARKS

There are 71 park sites containing 860 acres of park land in the City of Brantford.

- 44 neighbourhood parks
- 12 hardball diamonds
- 27 softball diamonds
- 9 soccer/football fields
- 8 wading pools
- 27 natural ice rink locations
- 28 community committees
- 6 major recreation centres

- North Park Recreation Centre - 22 acres
 - 2 arenas
 - enclosed football/soccer field
 - practice football/soccer field
 - floodlit softball diamond
 - hardball diamond
 - track & field facilities
 - field house w/dressing rooms
 - Brant Aquatic Centre
 - 65 meter, 8 lane pool with separate training pool & 10 meter diving tower

Industrial Development Data

CIVIC DATA

SECTION 10

North Park Recreation Centre (cont'd)

- Future Plans
- saunas and health club
 - tennis courts
 - lawn bowling
 - restaurant in planning stage

- Lions Park Recreation Centre - 33 acres
- 1 arena
 - enclosed soccer/football field
 - enclosed softball diamond (both floodlit)
 - 1 practice field
 - all-weather track
 - 4 tennis courts - flood lit

Mohawk Park - 44.2 acres

- picnic and camping (tent & trailer)
- wading pool, playground
- pavillion
- football/soccer field
- track and field facilities

- Woodland (Waterworks) 183.6 acres
- wooded, picnic, nature walks
 - soccer/football field
 - 2 softball diamonds

Cockshutt Park

- floodlit enclosed hardball diamond with grandstand
- hardball diamond and track (home of Cricket Club)

Schools - public schools are available for recreational programs outside of school hours

- school grounds are programmed by Parks and Recreation outside of school hours

Golf - Northridge - 18 holes, watered fairways and club house

- Arrowdale - 9 holes, club house

- plus 4 private golf courses - 1-18 hole and 3-9 hole

Industrial Development Data

LABOUR

SECTION 11

EMPLOYMENT AND AVERAGE WEEKLY WAGES AND SALARIES, BY INDUSTRY FOR THE BRANTFORD AREA

<u>Type of Industry</u>	<u>No. of Employees</u>	<u>Average Weekly Wages and Salaries</u>		
		<u>Nov/71</u>	<u>Nov/72</u>	<u>Sept/73</u>
		\$	\$	\$
Manufacturing	16,500	142.49	160.74	169.51
Durable Goods	10,200*	157.52	179.00	187.67
Non-Durable Goods	6,300*	123.25	135.03	140.19
Industrial Composite	22,300	134.44	151.85	158.89

* - Durable Goods and Non-Durable Goods is a breakdown of manufacturing

Definitions:

INDUSTRIAL COMPOSITE - The sum of the industries

DURABLE GOODS MANUFACTURING - The sum of wood products, furniture and fixtures, primary metal industries, metal fabricating industries, machinery (except electrical), transportation equipment, electrical products, and non-metallic mineral products

NON-DURABLE GOODS MANUFACTURING - The sum of the remaining manufacturing industries

Source: Statistics Canada, Employment Earnings and Hours, December, 1973

These figures are based on reports from employers of 20 or more employees

AREA AND DISTANCE INVOLVED

The majority of Brantford employees live either in the City of Brantford or the immediately adjacent areas through-out the county, including the Town of Paris and the Villages of Burford and St. George, which lie about 7 to 9 miles from the centre of Brantford. There is also some commuting to employment in Brantford from those areas of Norfolk, Wentworth and Oxford Counties, lying just outside the Brant County lines. The farthest point in the county is about 18 to 20 miles from the City.

THE BRANTFORD DEVELOPMENT COMMISSION

City Hall

BRANTFORD, ONTARIO, CANADA

LABOUR TURNOVER

This factor varies considerable in different types of industry, but the overall ratio is considered not excessive. For example, a fair-sized heavy industry with a total hourly-rated work force of 800-900 lists -

- 205 employees with 25 or more years of service
- 330 employees with 15 or more years of service
- 25 employees with 10 or more years of service
- 25 employees with 5 or more years of service
- 60 employees with 1 or more years of service

In other words, over 50% of the workers have 15 or more years of service.

WORKING HOURS AND STATUTORY HOLIDAYS

Most industrial plants work a 40-hour week on a variety of 1, 2 and 3 shift schedules.

Statutory Holidays are commonly recognized as

- New Year's Day
- Good Friday
- Victoria Day
- Dominion Day
- Civic Holiday
- Labour Day
- Thanksgiving Day
- Christmas Day

In addition, Easter Monday and Remembrance Day are recognized as legal, though not public holidays. Many collective agreements list 8 to 10 as paid holidays.

TRAINING FACILITIES AND EDUCATION

Several avenues are available to workers and employers in Brantford for further education and training.

- 1) The Brant County Board of Education offers evening courses in both academic and vocational areas. Special interest courses are also available.
- 2) The Canada Manpower Centre provides upgrading and skill courses through the facilities of the Braneida Campus of Mohawk College.

Industrial Development Data

LABOUR

SECTION 11

TRAINING FACILITIES AND EDUCATION (cont'd)

- 3) Mohawk College, Brantford Campus, provides evening courses in technical, vocational and general interest areas. In some cases, students can also avail themselves of the full time day program sponsored by the Canada Manpower Centre, on a fee paying basis.
- 4) The Canada Manpower Centre, in conjunction with the Provincial Ministry of Education provides financial and technical assistance in establishing on-the-job training programs through the Canada Manpower Industrial Training Program

THE BRANTFORD DEVELOPMENT COMMISSION

City Hall

BRANTFORD, ONTARIO, CANADA

Industrial Development Data

INDUSTRIAL DEVELOPMENT

SECTION 12

INDUSTRIAL DEVELOPMENT IN BRANTFORD AND VICINITY

<u>YEAR</u>	<u>NEW INDUSTRIES</u>
1964	6
1965	7
1966	6
1967	6
1968	2
1969	4
1970	1
1971	3
1972	1
1973	5
	—
TOTAL	41
	—

The 41 industries establishing in Brantford during the period 1964-1973 occupy some 900,000 square feet and represent a capital investment of approximately 18 million dollars. During the same period, established industry in the City expanded by some 1,700,000 square feet for a capital investment of approximately 30 million dollars.

The impetus to this phenomenal development is greatly due to municipal and utility co-operation and initiative in providing all necessary services as required.

THE BRANEIDA INDUSTRIAL PARK

BRANEIDA - (Brantford's North-Eastern Industrial Development Area) embracing some 1,000 acres of industrially zoned land is a prime example of the municipality's intent to co-operate with industrial and new development. Our policy has been to assemble land in advance of need and then on requirement, fully service blocks and sell in various size parcels for industrial projects. This land is sold at our cost.

In order that there will be no misunderstanding of the term "fully serviced", we mean that the following are provided:

storm sewer	sanitary sewer
municipal water	natural gas
hydro	rail (if required)
pavement	curb & gutter
street lights	

Please enquire about our all-inclusive industrial land price.

THE BRANTFORD DEVELOPMENT COMMISSION

City Hall

BRANTFORD, ONTARIO, CANADA

Industrial Development Data

S.R. Desk

Do Not Remove Card From Pocket

381 Make your own assessment of
B Brantford.
Brantford Industrial Comm.
c 3

381 Make your own assessment of
B Brantford.
S.R. Brantford Industrial Comm.
c 3
Desk

THE BRANTFORD DEVELOPMENT COMMISSION

City Hall

BRANTFORD, ONTARIO, CANADA

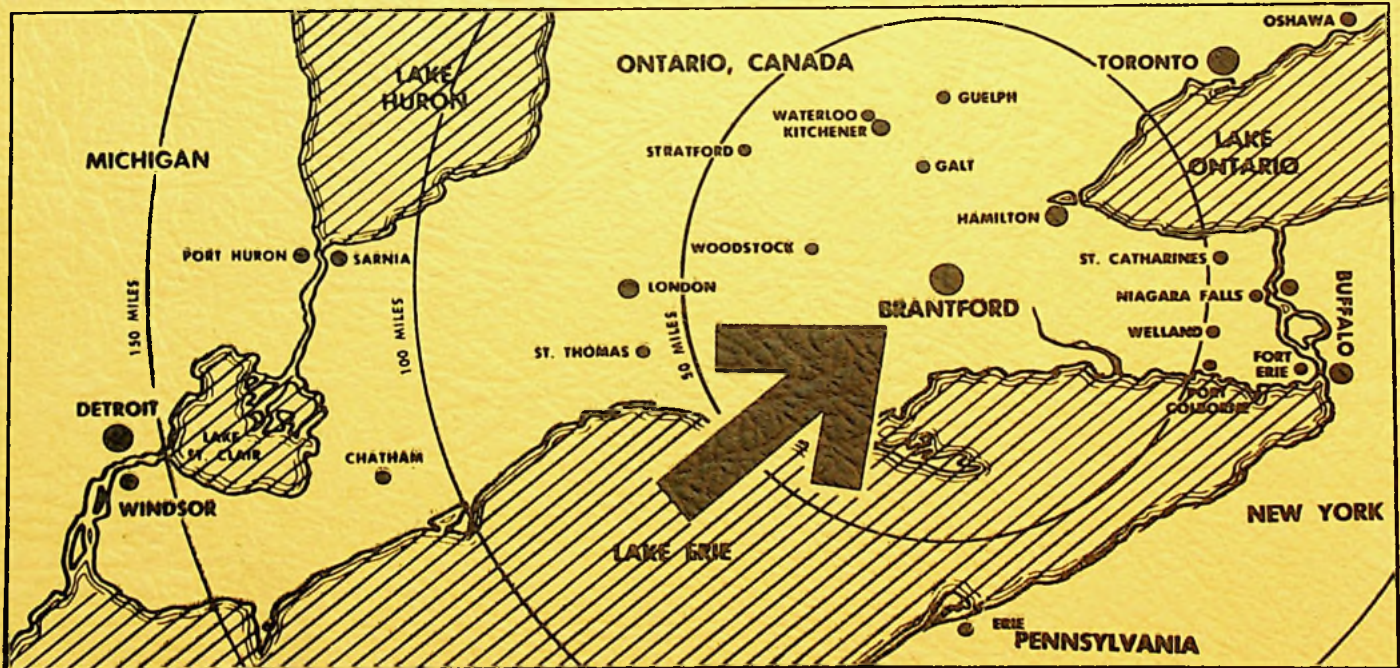




3 9154 00167371 4

INDUSTRY IS ON THE MOVE TO

Brantford



BRANTFORD DEVELOPMENT COMMISSION
CITY HALL / BRANTFORD, ONTARIO, CANADA