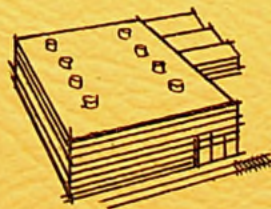
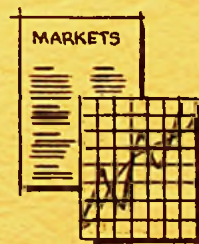


MAKE YOUR OWN ASSESSMENT OF

# Brantford

HERE ARE THE

# facts



**Local  
History**

381  
Brantford Industrial Comm.  
Desk Ref.

S.R.

**BRANTFORD INDUSTRIAL COMMISSION**  
CITY HALL / BRANTFORD, ONTARIO, CANADA



BRANTFORD PUBLIC LIBRARY  
REFERENCE DEPARTMENT

S.R.

X

This book must NOT be taken from  
this Department.

381

Class B Acc. No. Desk Reference  
C2 (1969)

<u>ITEM</u>	<u>SECTION</u>
LOCATION	1
CLIMATE	2
POPULATION	3
MUNICIPAL ADMINISTRATION & FINANCES	4
MUNICIPAL TAXES	5
MUNICIPAL SERVICES	6
Police	
Fire Protection	
Streets and Roads	
Water	
Sewage	
Garbage - Industrial & Commercial Waste	
POWER SOURCES	7
Hydro	
Gas	
Fuel Oil	
Coal	
FINANCIAL DATA	8
TRANSPORTATION FACILITIES	9
Railways	
Passenger Bus Services	
Truck Transport	
Air Services	
Water Ways	
Customs	
CIVIC DATA - General, Housing, Education Recreation and Hospitals	10
LABOUR	11
INDUSTRIAL DEVELOPMENT	12
INDUSTRIAL LANDS AVAILABLE	12

THE BRANTFORD INDUSTRIAL COMMISSION

City Hall

BRANTFORD, ONTARIO, CANADA

# Industrial Development Data

## LOCATION

## SECTION 1

### GENERAL

The City of Brantford, Ontario is centrally located in Canada's most concentrated industrial area which surrounds the westerly end of Lake Ontario. Served by #2, #24, #53 and #54 Provincial Highways, Brantford is directly on #403 Highway presently under development which will project the Queen Elizabeth Way at Hamilton westerly to #401 at Woodstock. The Brantford section of this highway is now in full operation.

### Road Miles - Brantford to:

Galt	17	St. Thomas	74
Hamilton	24	Buffalo	90
Kitchener	26	Oshawa	97
Guelph	31	Owen Sound	113
Oakville	42	Windsor	170
London	57	Detroit	171
St. Catharines	60	North Bay	270
Toronto	65	Ottawa	317
Niagara Falls	68	Montreal	405

### 30 Minutes from Seaway Port

Brantford is within 30 minutes by road and rail from the seaway port of Hamilton on Lake Ontario. This harbour provides seaway depth berthing at an ever-increasing number of wharves and terminals. The Port of Hamilton ranks high among Canada's leading seaports in total cargo tonnage handled.

### General Statistics

Elevation above sea level - 702 feet  
Longitude at City Hall - 80°15' 45" W  
Latitude at City Hall - 43°08' 26" N  
Incorporated as a Town - 1847  
Incorporated as a City - 1877  
1969 Population - 61,978

381  
B  
Desk ref.  
c2

BRANTFORD PUBLIC LIBRARY

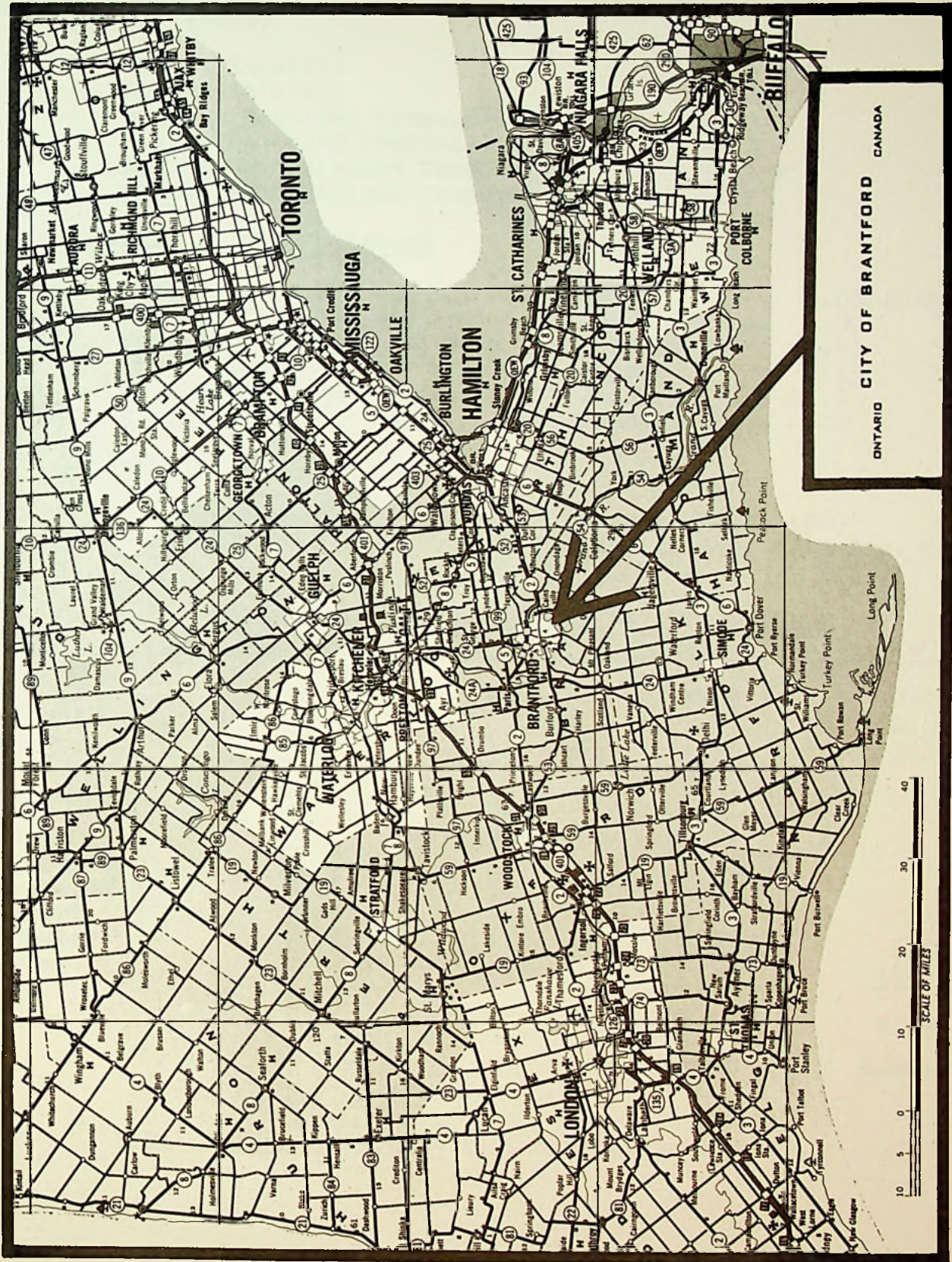
JUL 1971

THE BRANTFORD INDUSTRIAL COMMISSION

City Hall

BRANTFORD, ONTARIO, CANADA

# Industrial Development Data



THE BRANTFORD INDUSTRIAL COMMISSION

City Hall  
BRANTFORD, ONTARIO, CANADA



# Industrial Development Data

## CLIMATE

## SECTION 2

### CLIMATE (1969)

Annual Snowfall	42.2 inches
Annual Rainfall	23.89 "
Highest Recorded Temperature	91°F
Lowest Recorded Temperature	-1°F
Annual Mean Maximum Temperature	55.2°F
Annual Mean Minimum Temperature	38°F

### EXTREMES IN PRECIPITATION

Most rain in one month	July	4.05 inches
Most rain in one day	May 18	1.80 "
Most rain in shortest time	July 26-29	2.51 "
Dryest Month	August	0.13 "
Most snow in one month	January	12.9 "
Most snow in one day	January 6	6.0 "

### EXTREMES IN TEMPERATURES

Hottest recorded	91°F	August 24th, 1969
Coldest recorded	-1°F	Jan. 1, Jan. 27 & Dec. 24.

### PRECIPITATION & TEMPERATURE MAXIMUM/MINIMUM

MONTH	MAX TEMP · F	MIN TEMP · F	RAIN (")	SNOW (")
January	50	-1	1.63	12.9
February	41	5	.07	2.8
March	60	11	1.23	5.5
April	77	22	3.85	
May	89	33	4.00	
June	90	38	3.07	
July	90	48	4.05	
August	91	47	0.13	
September	88	34	0.95	
October	81	23	2.55	.05
November	63	14	2.03	6.7
December	40	-1	.62	14.0
			24.18	41.95
			24.18	41.95

N.B. 1 inch of rain = 10 inches of snow

# Industrial Development Data

## POPULATION

## SECTION 3

<u>YEAR</u>	<u>POPULATION</u>	<u>YEAR</u>	<u>POPULATION</u>
1900	16,276	1957	52,057
1910	21,964	1958	53,129
1920	30,549	1959	53,797
1930	30,153	1960	54,093
1940	31,135	1961	54,984
1950	36,532	1962	54,928
1951	36,602	1963	55,524
1952	36,854	1964	56,611
1953	37,118	1965	57,867
1954	37,229	1966	58,881
1955	50,592-(annexation)	1967	60,009
1956	51,612	1968	61,008
		1969	61,978

### RACIAL ORIGIN - 1965

<u>Major Ethnic Groups</u>	
British	37,448
French	3,005
German	2,673
Polish	2,061
Other	12,680

TOTAL 57,867

### AVERAGE WEEKLY WAGES IN THE INDUSTRIAL COMPOSITE (A)

	<u>December - 1970</u>	<u>1969</u>	<u>1968</u>
BRANTFORD	108.27	103.69	98.05
ONTARIO	120.46	113.22	105.74
CANADA	117.09	109.94	102.49

### ESTIMATED POPULATION PROJECTION FOR THE CITY OF BRANTFORD

<u>YEAR</u>	<u>POPULATION</u>
1970	62,500
1975	68,000
1980	75,000

(A) Source: D.B.S. Employment and Average Weekly Wages and Salaries, January, 1970.

THE BRANTFORD INDUSTRIAL COMMISSION

City Hall

BRANTFORD, ONTARIO, CANADA



# Industrial Development Data

## POPULATION

## SECTION 3

### BRANTFORD TRADING AREA Cities, Towns and Townships

<u>COMMUNITY</u>	<u>DISTANCE</u>	<u>POPULATION (1969)</u>
Brantford	-----	61,978
Paris	7 miles	6,467
Port Dover *	33 "	3,348
Simcoe *	24 "	10,462
Waterford *	17 "	2,485
Township of Brantford	-----	9,298
" " Burford	13 "	5,874
" " South Dumfries	10 "	3,890
" " Oakland	8 "	1,372
" " Onondaga	10 "	1,369
" " Charlotteville *	27 "	6,264
" " Townsend *	14 "	5,257
" " Windham *	17 "	5,928
" " Woodhouse *	20 "	<u>2,972</u>
		<u>126,964</u>

**NOTE:**

\* - Townships and Towns in the County of Norfolk under our market influence and labour pool

--- Distance of the Townships are based on a centre to centre measurement between the townships concerned and the City of Brantford.

THE BRANTFORD INDUSTRIAL COMMISSION

City Hall

BRANTFORD, ONTARIO, CANADA

# Industrial Development Data

## POPULATION

## SECTION 3

### POPULATION BREAKDOWN

The following is a population breakdown for the years 1959 to 1969 inclusive, with the percentage figure which each group relates to the total for that particular year.

	<u>AGE</u> <u>0-9</u>	<u>AGE</u> <u>10-15</u>	<u>AGE</u> <u>16-19</u>	<u>AGE</u> <u>20-64</u>	<u>AGE</u> <u>65 &amp;</u> <u>OVER</u>	<u>TOTAL</u> <u>ALL</u> <u>AGES</u>
1969	11,320	7,318	4,409	32,525	6,406	61,978
PERCENTAGE	18.21	11.80	7.11	52.46	10.33	
1968	11,544	7,182	4,298	31,645	6,339	61,008
PERCENTAGE	18.92	11.77	7.04	51.81	10.39	
1967	11,625	7,012	4,182	30,873	6,317	60,009
PERCENTAGE	19.97	11.58	6.97	51.45	10.53	
1966	11,659	6,824	4,345	30,071	6,071	58,981
PERCENTAGE	19.77	11.57	7.39	50.98	10.30	
1965	11,495	6,832	4,051	29,578	5,911	57,867
PERCENTAGE	19.86	11.81	7.00	51.12	10.21	
1964	11,249	6,694	3,792	29,263	5,613	56,611
PERCENTAGE	19.87	11.83	6.70	51.68	9.92	
1963	11,161	6,546	3,441	28,877	5,599	55,624
PERCENTAGE	20.06	11.77	6.19	51.91	10.07	
1962	11,145	6,517	3,151	28,627	5,478	54,928
PERCENTAGE	20.29	11.87	5.75	52.12	9.97	
1961	11,255	6,272	3,107	28,850	5,500	54,984
PERCENTAGE	20.47	11.41	5.65	52.46	10.00	
1960	11,137	6,100	3,005	28,500	5,356	54,098
PERCENTAGE	20.59	11.28	5.55	52.69	9.90	
1959	8,953	5,838	2,829	28,535	5,445	53,797
PERCENTAGE	20.71	10.85	5.28	53.04	10.12	

#### % Increase:

1959-1969 Inc.	13.1%
1964-1969 Inc.	8.6%
1968-1969 Inc.	1.56%

THE BRANTFORD INDUSTRIAL COMMISSION

City Hall

BRANTFORD, ONTARIO, CANADA

# Industrial Development Data

## MUNICIPAL ADMINISTRATION & FINANCES

## SECTION 4

The City Council, Public Utilities Commission, Brant County Board of Education and the Brant County Separate School Board are the elected bodies. City Council is the senior body.

### CITY COUNCIL

is composed of the Mayor and ten Aldermen. The City is divided into 5 Wards with 2 Aldermen representing each ward.

### THE PUBLIC UTILITIES COMMISSION

is composed of 1 Commissioner from each Ward plus the Mayor by virtue of office. The P.U.C. is responsible for providing water, hydro and inter-urban bus transportation. The chairman is elected by the Board.

### THE BRANT COUNTY BOARD OF EDUCATION

is composed of 14 Trustees elected on a county wide basis plus 2 appointed representatives from the Brant County Separate School Board (vote only on secondary school matters). The Chairman is elected by the Board annually.

### THE BRANT COUNTY SEPARATE SCHOOL BOARD

is composed of 12 Trustees, elected on a county wide basis - elementary and secondary education.

### ELECTIONS AND TERM OF OFFICE

Elections are held on the first Monday of December, every other year.

### OUTSIDE BOARDS AND COMMISSIONS (APPOINTED)

- Board of Police Commissioners
- Board of Park Management and Cemetery Board
- Recreation Commission
- Glenhyrst Gardens Commission
- Brantford Industrial Commission
- Brantford Public Library Board
- Brantford Planning Board
- Committee of Adjustment
- Brant County Health Unit
- Board of Governors John Noble Home
- Brantford Suburban Roads Commission
- Brant Sanatorium Board
- Brantford Airport Commission
- Court of Revision
- Landlord and Tenant Advisory Bureau
- Citizens Urban Renewal Committee

## THE BRANTFORD INDUSTRIAL COMMISSION

City Hall

BRANTFORD, ONTARIO, CANADA

# Industrial Development Data

## MUNICIPAL ADMINISTRATION & FINANCES

## SECTION 4

### DEBENTURE DEBT DECEMBER 31

PAYABLE FROM GENERAL  
TAXATION  
General  
Schools

1968

1969

\$ 7,887,851.84	\$ 8,209,781.84
<u>5,223,842.76</u>	<u>4,883,721.57</u>
\$ 13,111,694.60	\$ 13,093,563.41

PAYABLE BY PUBLIC  
UTILITIES

Water  
Hydro  
Buses

\$ 1,511,250.00	\$ 1,478,250.00
418,000.00	373,500.00
18,000.000	80,000.00

RATEPAYER'S SHARE LOCAL  
IMPROVEMENTS

1,543,166.75	1,561,518.18
--------------	--------------

PAYABLE FROM PARKING  
REVENUE

340,000.00	320,000.00
------------	------------

TOTAL DEBENTURE DEBT  
(ISSUED BY THE CITY)

\$16,942,111.34	\$16,906,771.59
-----------------	-----------------

### PER CAPITA COMPARISONS

	<u>1968</u>	<u>1969</u>
Gross debenture debt	277.70	270.04
Net taxable debt	222.68	218.41
Taxable assessment	2,268.85	2,291.75
Tax levy	182.61	184.60
Tax Arrears	16.25	14.84

THE BRANTFORD INDUSTRIAL COMMISSION

City Hall

BRANTFORD, ONTARIO, CANADA

# Industrial Development Data

## MUNICIPAL TAXES

## SECTION 5

### INDUSTRIAL TAXES IN BRANTFORD, ONTARIO

Taxes levied by the Municipality apply to:

1. Land
2. Buildings
3. Business Tax

#### LAND ASSESSMENT based upon:

1. Location and services
2. Use of property
3. Other criteria which require the professional estimate of a trained assessment officer.

Assessments cannot be expressed accurately as a percentage of the market price since the evaluation standards of the assessment officers do not necessarily coincide with those of realtors. The acreage upon which a building is constructed and the property utilized immediately will be assessed at a higher rate than the unimproved acreage held for future expansion. Each parcel of industrial land, therefore, will be assessed by the same standard for each industry, but will vary according to the percentage of the property improved by construction and use.

#### BUILDING ASSESSMENT

Is based upon 1945 normal construction costs. In order for us to estimate the assessment of a proposed industrial building, it is necessary to see the specifications. Estimated costs by construction firms cannot be used since there are variations in these estimates.

#### BUSINESS TAX

In all Ontario Communities, including Brantford, a business tax is applied to all manufacturing industries at a rate of 60%. (This is statutory).

#### 1970 MILL RATE

The tax rate for commercial and industrial properties in Brantford in 1970 is Public 95.44 mills and Separate 97.37 mills. This applies in the calculation of land, building and business tax. We will provide an estimate of municipal taxes when the acreage of property and building specifications are provided by any interested company.

THE BRANTFORD INDUSTRIAL COMMISSION

City Hall

BRANTFORD, ONTARIO, CANADA

# Industrial Development Data

## MUNICIPAL TAXES

## SECTION 5

### INDUSTRIAL TAXES IN BRANTFORD (cont'd)

#### SAMPLE ONLY

Land 10 acres - Assessment .....\$ 16,250  
     3   "    Assessed @ \$2,500 per acre  
     7   "    "        @ \$1,250   "    "

Building 40,000 square feet + office - Assessment \$117,730  
 (Note: Estimated cost of building - \$320,000)

Land Tax: 7 acres @ 87.37 mills..\$	764.49
3   "    @ 95.44   "    ..	715.80
Building tax @ 95.44 mills.....	<u>11,236.15</u>
 Total - land + building .....	 12,716.44
 Business tax - 60% of 3 acres of land + total buildings X 95.44 mills.....	   <u>7,171.17</u>
 Total tax.....\$	   <u>19,887.61</u>

#### STATISTICS

Assessment Ratio for the years 1959-1969 inclusive

<u>YEAR</u>	<u>RESIDENTIAL</u>	<u>COMMERCIAL</u>	<u>INDUSTRIAL</u>
1969	58.24%	20.75%	21.69%
1968	58.39%	19.82%	21.79%
1967	58.57%	20.12%	21.31%
1966	57.71%	21.03%	21.26%
1965	57.87%	20.82%	21.29%
1964	58.60%	20.91%	20.49%
1963	57.86%	21.57%	20.57%
1962	59.01%	21.78%	19.21%
1961	58.61%	21.62%	19.78%
1960	58.09%	21.38%	20.53%
1959	58.26%	20.70%	20.94%

THE BRANTFORD INDUSTRIAL COMMISSION

City Hall

BRANTFORD, ONTARIO, CANADA

MUNICIPAL SERVICES

SECTION 6

POLICE

A staff of 111 police officers and detectives; 5 police cadets; under the leadership of a Chief of Police, Deputy Chief and two staff Inspectors and a Sergeant Major comprise the Police Department of the City.

A fleet of radio equipped vehicles; motorcycles and van, patrol the city area regularly.

In addition to routine patrols, the Department is prepared to:

- Accept, check telephone calls from plant watchmen and to make an immediate personal investigation should a call not be received on time.
- Escort payrolls from bank to plant or sums of money from plant to bank at no charge
- Supply confidential information to personnel selection officers on applicants for positions
- Accept company security guards in police department instruction classes.
- Co-operate fully with security guards on company investigations if requested to do so
- Make surveys on traffic conditions and make recommendations to the Traffic Committee for improvements in traffic safety or traffic flow in any area
- Conduct evening classes in traffic safety
- Train and administer an Auxiliary Police Force under the E.M.O. for local or national emergency
- Train and maintain adult school-crossing guards and juvenile school patrols

MUNICIPAL SERVICES

SECTION 6

FIRE PROTECTION

The staff consists of a Chief, Deputy Chief, Secretary, Fire Prevention Officer, 2 Fire Inspectors, 1 Training Officer, 5 Captains, 12 Lieutenants, 1 Motor Mechanic and 76 full time fire fighters.

EQUIPMENT:

- 1 - 1965 King Seagrave, 1050 G.P.M. Pumper
- 1 - 1959 King Seagrave, 1050 G.P.M. Pumper
- 1 - 1955 King Seagrave, 850 G.P.M. Pumper
- 1 - 1970 Seagrave (Ford Chassis) 840 G.P.M. Pumper
- 1 - 1949 Seagrave, 750 G.P.M. Pumper
- 1 - 1944 85' LaFrance Aerial Ladder Truck with 220' of ground ladders
- 1 - 1961 100' King Seagrave Aerial Ladder Truck with 204' of ground ladders
- 1 - 1957 Dodge custom built van rescue or disaster unit, fully equipped with emergency equipment for rescue work
- 1 - 16' aluminium boat with 10 H.P. motor
- 1 - 15' fibreglass boat with 5 H.P. motor
- 4 - Sedan cars, 1-1969 Chief's Car; 1-1965 Deputy Chief's car; 2-1968 Inspector's cars)
- 1 - 1964 3/4 ton pick-up truck
- 1 - 1964 Pontiac custom built ambulance
- 1 - 1967 Pontiac custom built ambulance
- 1 - 1969 Pontiac custom built ambulance

All equipment including the ambulances are equipped with two way short wave radio. The pumps on the fire equipment are of most modern large capacity centrifugal design. The trucks are also equipped with modern nozzles and fire fighting chemicals. Added to the Central Fire Station in 1968 was a Training Building.

The per capita fire loss over the past five years was \$3.10 as compared to approximately \$8.00 for Canada. The ten year period per capita loss was \$4.35. Brantford has been given a Class "A" rating by insurance companies because of our very low loss ratio for all class of risk.

Co-operation is extended to all industrial plants where management requests fire prevention surveys, fire prevention programs or fire protection instruction. Many industrial plant fire brigades have been organized and trained and films shown to personnel on fire safety and the operation of fire extinguishers. This service is available to all our industries.



# Industrial Development Data

## MUNICIPAL SERVICES

## SECTION 6

### STREETS AND ROADS

<u>PAVEMENT TYPE</u>	STREET MILEAGE AS OF DECEMBER 31,			
	<u>1966</u>	<u>1967</u>	<u>1968</u>	<u>1969</u>
1. Concrete Surface	19.4	19.1	18.4	17.2
2. Bituminous Surface -concrete base	10.2	9.7	10.4	11.1
3. *High Cost Flexible	41.5	49.9	56.8	63.1
4. Low Cost Bituminous	63.8	59.9	53.4	48.8
5. Surface Treated gravel	34.7	33.9	33.9	33.9
6. Surface Untreated gravel	<u>1.8</u>	<u>1.8</u>	<u>1.8</u>	<u>1.8</u>
	171.4	174.3	174.7	176.7

\*HMST included

### PARKING FACILITIES

The City of Brantford has 362 off-street parking spaces and 545 on-street parking spaces available in the downtown district. In addition, the canal parking lot located one block off the downtown area has space to accommodate 415 cars.

### WATER

The City of Brantford obtains its water supply from the Grand River and is assured of an abundant supply throughout the entire year. The capacity of our existing system is 12,000,000 G.P.D. with immediate plans to increase to 15,000,000 G.P.D. Consumption of water at normal periods is around 6 million G.P.D. peaking to 11 million G.P.D. The treatment process consists of free residual chlorination, aeration, dechlorination, activated carbon for taste and odour control, coagulation and settling using aluminum sulphate and activated silica, Ph control using calcium hydrate, filtration, fluoridation and post treatment of chlorine residual using sulphur dioxide and ammonia. The analysis of the finished water is described on the following page.

THE BRANTFORD INDUSTRIAL COMMISSION

City Hall

BRANTFORD, ONTARIO, CANADA

# Industrial Development Data

## MUNICIPAL SERVICES

## SECTION 6

### WATER ANALYSIS

PH	8.2	Iron	Trace
Turbidity	9.3 to 0.1 ppm	Manganese	None
Dissolved Solids	(300 normal)	Calcium (as Cao)	89-110 ppm
Total Alkalinity		Mg o	29-80 "
(as CaCo3)	(175 normal)	SO 4	50-70 "
Silica	5 ppm	NO 3 as N	9.4-2.5 "
Total Hardness	(310 normal)	Organic Nitrogen	9.4-1.8 "
(as CaCo3)		Fluorine (asF)	.0-1.2 "
		Chloramine Residual	0.3-0.5 "

### RATE SCHEDULE, TWO-MONTH BILLING PERIOD

(all water rates are net)

The rate consists of a basic charge based on installed meter size, plus a consumption charge for water used.

<u>METER SIZE</u>	<u>BASIC CHARGE</u>	<u>MINIMUM BILL</u>
5/8"	2.75	4.40
3/4"	4.11	7.39
1"	6.49	13.07
1 1/2"	5.76	21.75
2"	8.22	42.65
4"	25.70	135.59
6"	44.40	229.90
8"	63.10	371.53

### CONSUMPTION RATES

Consumption charge in cents per 100 cubic feet:

First rate up to	7200 c. ft.	19.8¢
Rate between	7200 and 60,000	14¢
Rate above	60,000	10.9¢

Water supply for sprinkler system and fire protection is supplied un-metered at no additional charge. Water connection for this service will be made at the customers expense.

THE BRANTFORD INDUSTRIAL COMMISSION

City Hall

BRANTFORD, ONTARIO, CANADA

# Industrial Development Data

## MUNICIPAL SERVICES

## SECTION 6

### SEWAGE DISPOSAL

The Public Utilities Commission collects Sewer Service Charges for the City of Brantford in accordance with By-law 38-68 to cover the operation and maintenance of the Sewage Treatment Plant. The rates are listed below.

<u>Meter Size</u>	<u>Per Two Months</u>	
5/8"	\$ 1.98	Any meter or combination of meters over 1" in size to be billed at 45% of net water account
3/4"	3.33	
1"	5.88	

### GARBAGE - INDUSTRIAL WASTE REMOVAL

Garbage disposal is conducted by sanitary land fill. The municipality does not provide collection of garbage for industry. However, the handling of industrial waste can be contracted to contractors such as:

Brant Salvage Service	125 Stanley Street	756-6832
Canada Disposal	33 Rose Avenue	752-2337
House, Allan Contractor	16 Drummond Street	753-6658
Proper, G.W.	2 Park Avenue	752-8111

In the event an industry would prefer to dispose of its own industrial waste, the city dump, located on the south side of the City (Morrison Avenue) is open daily from 7.00 a.m. to 8.00 p.m. Monday through Friday. Saturday hours are from 7.00 a.m. to 7.00 p.m., Sunday hours are from 11.00 a.m. to 7.00 p.m. and holiday hours are 7.00 a.m. to 7.00 p.m.

# Industrial Development Data

## POWER SOURCES

## SECTION 7

### HYDRO

#### POWER SUPPLY

The Public Utilities Commission is prepared to supply electric power to any industry in virtually unlimited quantity upon reasonable notice. At the present time, various industries are supplied with either 27.6 kv, 3 phase, 3 wire; 4,150 volts, 3 phase, 4 wire; and 600 volts, 3 phase. Commercial and industrial establishments are also supplied with 120/208 volts, 3 phase, 4 wire; and 115/230 volts, single phase. The frequency of supply is 60 cycles. The transformer capacity is 120,000 K.V.A. For detailed information, reference should be made to the Public Utilities Commission Office at 50 Wellington Street.

#### GENERAL SERVICE ELECTRIC RATES

##### ENERGY MONTHLY

A. First	50 KW Hrs.	@ 3.6¢	per KW Hr.		
Next	200 KW Hrs.	@ 1.5¢	"	"	"
Next	1750 KW Hrs.	@ 1.35	"	"	"
Next	8000 KW Hrs.	@ .8¢	"	"	"
Balance of	KW Hrs.	@ .5¢	"	"	"

##### KW DEMAND CHARGE MONTHLY

First 10 KW - no charge  
Next 40 KW - @ \$1.00 Per KW  
Next 450 KW - @ \$1.50 " "

- B. Customers above 500 KW peak load - all energy @ .3¢ per KW Hr. All KW demand @ \$2.00 per KW.
- C. 1. Discount for stepdown from distribution voltage 15¢ per KW.  
2. Discount for stepdown from sub transmission voltage 25¢ per KW.

Minimum monthly bill \$2.00 - 5% additional on payments after due date.

THE BRANTFORD INDUSTRIAL COMMISSION

City Hall

BRANTFORD, ONTARIO, CANADA

NATURAL GAS

Natural gas service is provided by Union Gas Company of Canada Limited - which has been serving southwestern Ontario for half a century.

SOURCE

The natural gas supplied here comes primarily from Western Canada, via the Trans-Canada Pipeline. But it may also come, on occasion, from gas fields located in Southwestern Ontario or from the Southern United States.

PIPELINES

The City is served by three transmission pipelines - an 8 inch diameter line from the south, a 10 inch diameter line from the west and a 12 inch diameter line from the north. Distribution within the city is by means of a network of street mains which is constantly being enlarged as the demand warrants.

RELIABLE SUPPLY

Union Gas Company's policy of purchasing natural gas from reliable sources on a long-term, large-volume basis, assures the City of a gas supply adequate to meet all types of requirements for many, many years into the future. The effective utilization of underground gas storage facilities (located within practical, economic reach of the city) offers further assurance of a dependable supply.

GAS CHARACTERISTICS

The natural gas supplied by Union Gas has a nominal rating of 1,000 BTU's while the specific gravity is slightly more than half that of air. Hydrogen sulfide and sulfur content range from nil to well below the acceptable maximum.

SCHEDULE OF RATES - BRANTFORD AREA

First	200	cubic feet	\$ .50	per C.C.F.	\$ .50	per C.C.F.*
Next	1,800	" "	1.00	" M.C.F.	.95	" M.C.F.*
Next	8,000	" "	1.08 $\frac{1}{2}$	" "	1.03 $\frac{1}{2}$	" "
Next	90,000	" "	1.03 $\frac{1}{2}$	" "	.98 $\frac{1}{2}$	" "
Next	400,000	" "	1.00	" "	.95	" "
Next	500,000	" "	.95	" "	.90	" "
Next	1,000,000	" "	.90	" "	.85	" "
Next	5,000,000	" "	.85	" "	.80	" "
Next	7,000,000	" "	.80	" "	.75	" "
All over	14,000,000	" "	.75	" "	.70	" "

\* C.C.F. means "per 100 cubic feet"

\* M.C.F. means "per 1,000 cubic feet"

THE BRANTFORD INDUSTRIAL COMMISSION

City Hall

BRANTFORD, ONTARIO, CANADA

# Industrial Development Data

## POWER SOURCES

SECTION 7

### FUEL OIL

Source of supply: Major refineries in the Bronte and Toronto Area.

#### GRADES OF FUEL OIL AVAILABLE

#### COST/ GALLON

Stove Oil	\$ 0.24
Furnace Oil	0.20.9
#2 Furnace Oil	(subject to storage & consumption)
Bunker "C" (Light, Medium & Heavy	\$0.09 to \$0.12 depending on grade

### COAL

Source of supply - U.S.A. - either off Canadian docks or by rail from various U.S.A. fields.

Grades available and cost per ton delivered as follows:

Anthracite - Domestic - all sizes - \$35.00

Domestic, Commercial and Industrial Stoker Coals - all sizes and wide range of qualities, each with wide range of B.T.U. and specifications, \$25.00 - \$28.50

THE BRANTFORD INDUSTRIAL COMMISSION

City Hall

BRANTFORD, ONTARIO, CANADA

# Industrial Development Data

## FINANCIAL DATA

## SECTION 8

### BANKS IN BRANTFORD

The Canadian Imperial Bank of Commerce Dalhousie & Market Streets Manager: James H. Slimon	Phone: 752-5477
The Bank of Montreal 57 Market Street Manager: Mr. F.J. Edwards	Phone: 752-7887
The Bank of Nova Scotia 171 Colborne Street Manager: Mr. J.H. Rehder	Phone: 759-5810
The Royal Bank of Canada 30-32 Market Street Manager: T.R. McCullough	Phone: 753-4121
The Toronto-Dominion Bank 108 Colborne Street Manager: Mr. C.E. McGuire	Phone: 756-6144

### TRUST COMPANIES IN BRANTFORD

Canada Permanent Trust Company 70 Market Street Manager: Mr. A.E. Quinlan	Phone: 759-4020
Crown Trust Company 114 Dalhousie Street Manager: Mr. C.M. Corneil	Phone: 752-4393
Fidelity Mortgage & Savings 28 Market Street Manager: D.J. Usselman	Phone: 752-4319

### FINANCE COMPANIES IN BRANTFORD

Associates Finance Co. Ltd. 172 Dalhousie Street	Phone: 753-8661
Beneficial Finance Co. of Canada 163 Colborne Street	Phone: 753-4195
Canadian Acceptance Corp Ltd. 40 Market Street	Phone: 753-3111
Citizens Finance Corp. Ltd. 146 $\frac{1}{2}$ Colborne Street	Phone: 753-2691

THE BRANTFORD INDUSTRIAL COMMISSION

City Hall

BRANTFORD, ONTARIO, CANADA

# Industrial Development Data

## FINANCIAL DATA

## SECTION 8

### FINANCE COMPANIES IN BRANTFORD (cont'd)

Avco Finance Ltd. 113 Colborne Street	Phone: 756-6317
Household Finance Co. of Canada Ltd. 118 Colborne Street	Phone: 752-6562
Niagara Finance Co. Ltd. 233 Colborne Street	Phone: 752-7863
Pacific Finance Acceptance Co. Ltd. 169 Colborne Street	Phone: 752-5426
Traders Group Ltd. 149 Colborne Street	Phone: 752-3787
Trans Canada Credit Corp. Ltd. 149 Colborne Street	Phone: 753-4185

### COLLECTION AGENCIES

Credit Bureau 154 Dalhousie Street	Phone: 753-3483
---------------------------------------	-----------------

THE BRANTFORD INDUSTRIAL COMMISSION

City Hall

BRANTFORD, ONTARIO, CANADA



# Industrial Development Data

## TRANSPORTATION

## SECTION 9

### CANADIAN NATIONAL RAILWAYS

Facilities of the Canadian National Railways in Brantford are as follows:

#### YARD

Storage capacity of 400 cars. The C.N.R. operates approximately ten miles of industrial trackage through central Brantford

#### TEAM TRACKS

Wadsworth Street - 20 car capacity  
Cainsville - 10 car capacity

#### SCALES & RAMPS

Two loading ramps (handles Piggyback Trailers)  
52' 125-ton capacity scale track  
20-ton capacity truck scale  
5-ton capacity platform scale in freight shed.

#### OVERHEAD CRANES

3-ton capacity electric overhead crane in freight shed  
10-ton overhead track crane located just west of the freight shed.

#### FREIGHT OFFICE AND SHED

Located on Wadsworth Street, the shed is capable of handling 30 merchandise cars and is equipped with 1½ ton fork lift truck.

Yard switching is on a 24-hour day basis, Monday through Friday and an 8 hour basis Saturday and Sunday. Cars are inter-switched with the T.H.&B. and L.E.&N. daily.

#### PASSENGER DEPOTS

Ticket Office - Station - Wadsworth St. Phone: 753-4179

TELEGRAPH OFFICE - 8 Grand River Ave. Phone: 753-3477

#### EXPRESS

The Express Office is located at the west end of the passenger station and handle Canadian National Express and Railway Express, also air Express and Air Cargo Shipments for T.C.A. Cartage with pick-up and delivery service is offered on Less-Than-Carload and Carload Freight handled to or from the C.N.R. freight shed.

THE BRANTFORD INDUSTRIAL COMMISSION

City Hall

BRANTFORD, ONTARIO, CANADA

# Industrial Development Data

## TRANSPORTATION

## SECTION 9

### THE TORONTO, HAMILTON, BUFFALO RAILWAY CO.

The T.H.&B. Railway Company serves the south side of the City entering at Cainsville on the east from Hamilton. The general offices are located in the Railway Station, Hamilton, Ontario. District offices are located in Buffalo, Pittsburgh and Port Colborne, Ontario.

### YARDS

Mohawk Yard - extending east from Mohawk Street - capacity - 150 cars

Market Street - extending east from Market Street to Eagle Avenue - capacity - 75 cars.

### TEAM TRACKS

Cainsville, Market Street, West Colborne Street.

### SCALES AND RAMP

50 foot, 150-ton capacity track scale in Market Street Yard, 2 car ramp at Newport Street.

### FREIGHT

Daily switching, 5 days per week, additional service as required.

Through manifest freight service to all connections.

### PASSENGER

All services from Hamilton. Tickets, information and baggage handling arranged at Brantford Station.

### EXPRESS

Railway Express Company operate over our line and provide service in and out of Brantford.

### INTERCHANGE

With Lake Erie and Northern and Canadian National Railways at Brantford.

### CONNECTIONS

With New York Central System at Waterford; New York Central System at Welland and Canadian Pacific Railway at Hamilton.

# Industrial Development Data

## TRANSPORTATION

## SECTION 9

### LAKE ERIE & NORTHERN RAILWAY

The Lake Erie and Northern Railway, a diesel-operated subsidiary of the Canadian Pacific Railway, operates between Galt and Port Dover through Brantford. At Galt, a distance of 21 miles, connection is made with the Main Line of the Canadian Pacific Railway and at Waterford, a distance of 16 miles, connection is made with the Main Line of the New York Central Railroad.

Brantford has interchange of switching facilities between all railways.

The Brantford office is located on Grand River Avenue.

### TRUCK TRANSPORT SERVICES

Listed below are the names of truck transport companies serving Brantford. This information is from the 1970 edition of the Official Ontario "Ship by Truck" directory published by the Automotive Transport Association of Ontario.

Names not followed by a symbol are in Class "A" - authorizing the licensee to conduct as a common carrier a public commercial vehicle service between places on the Queen's Highway and other places named in the license. Class "C" authorizes the licensee to transport as a common carrier only on a continuous trip from or to the place or places named in the license.

Symbols: (C) Class "C" privileges  
(T) Terminal Location  
(\* ) Restricted - consult details of license.

(T) Consolidated (C) Duncan	(T) Rees (C) Victoria (C)
(T) Listowel (*)	Scobie's
(T) Cronkwright (C)	Thibodeau Express
(T) Kingsway Dalewood (C)	Cathcart
(T) Wright Motor Smith	(T) Jones (C) Mitchell (Ham)
(T) Finch (C)	Overland
(T) Inter-City Direct Winters	Russell (*) Maritime Ontario Dominion Freightways (C)

THE BRANTFORD INDUSTRIAL COMMISSION

City Hall

BRANTFORD, ONTARIO, CANADA

# Industrial Development Data

## TRANSPORTATION

## SECTION 9

### BRANTFORD MUNICIPAL AIRPORT

Located on the immediate outskirts of the City of Brantford, The Brantford Municipal Airport offers numerous advantages to area business men. Easy driving distance to the principle centres, it is within easy flying distance of major centres in Canada and the United States.

#### FLYING TIMES:

Toronto	30 minutes	Detroit	3 hours 20 min.
Pittsburgh	2 hours 30 min.	Montreal	1 " 22 "
Chicago	3 " 50 "	New York	3 " 20 "
Cleveland	2 " 10 "	North Bay	2 " 10 "
Muskoka	1 " 15 "		

### THE BRANT NORFOLK AERO CLUB

The club operates the Brantford Municipal Airport for the City Airport Commission and is equipped to train pilots for private or commercial pilots licenses. The club is equipped to give instruction in night flying as well as Link and Instrument Training. All instruction is supervised by Government Licensed Instructors.

#### COMFORTABLE LOUNGE

Lounge facilities are at the disposal of members, and may be used for business conferences when time is an important consideration. A call to the Airport prior to arrival will be all that is needed to arrange the necessary accommodation.

#### MODERN CAFETERIA

Noon luncheon snacks and coffee are available at the Airport cafeteria. Hours: Open all day till 4:30 p.m., Saturdays open till 5.30 p.m. -- also open Sundays.

#### CHARTER FLIGHTS

The Brant-Norfolk Aero Club can place at the disposal of its members (pilots and non-pilot), competent pilots and fully serviced aircraft for charter flights to fields at major centres. Arrangements for such charter flights can be made with the Airport Manager, Mr. Terry Patton.

THE BRANTFORD INDUSTRIAL COMMISSION

City Hall

BRANTFORD, ONTARIO, CANADA

# Industrial Development Data

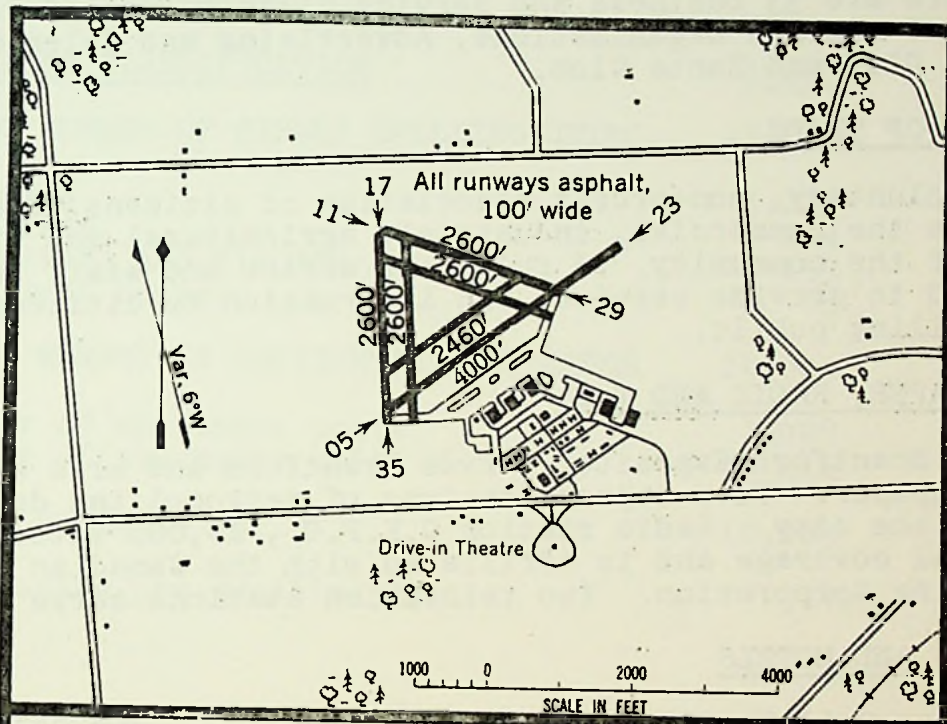
## TRANSPORTATION

## SECTION 9

### BRANTFORD MUNICIPAL AIRPORT (Cont'd)

#### CUSTOMS

The Brantford Municipal Airport is a Canadian Customs Port of Entry. Prior notification of arrival is required for any flight landing at Brantford from the United States.



### BRANTFORD AIRPORT BRANTFORD, ONT.

LAT. 43°08'N LONG. 80°21'W ELEV 815'  
4 miles W of Brantford

OPERATOR Corp. of City of Brantford

USABLE All year

LIGHTING Flashing beacon. Runway lights on outer runways available on prior request. Lighting on 2 hr. notice to Brantford Flying Club, Phone (519) 753-2521 or 753-3617 after hours 756-5126.

RADIO AIR GROUND. Call Sign: VYE 85  
Trans and Guards 122.8 (Daylight hours)  
Operator: Brantford Flying Club.

RADIO NAV. AID. Brantford N.D.B. 4½ N.M. S.W.  
IDENT. F.D. • — — • 207 KHz

FACILITIES Hangars and Servicing available. GAS: 80/87, 100/130. OIL: 65, 80, 100, 120. Telephone at field. Taxi. Bus and Hotels in Brantford.

REMARKS Licensed airport. Customs port of entry and exit for tourists only. Customs House 4½ miles. One hour prior notice required.

JUNE, 1969

THE BRANTFORD INDUSTRIAL COMMISSION

City Hall

BRANTFORD, ONTARIO, CANADA

# Industrial Development Data

## CIVIC DATA

SECTION 10

### GENERAL

#### CHURCHES AND DENOMINATIONS

Brantford has churches of all denominations; 54 Protestant; 5 Roman Catholic; 1 Synagogue; 7 sects and the Brantford Corps of the Salvation Army.

#### BUSINESS AND SERVICE CLUBS

There are 33 business and service clubs in Brantford including 7 women's organizations, Advertising and Sales Club, Shriner's Club and Zonta Club.

#### BOARD OF TRADE

A voluntary, non-profit association of citizens organized to promote the commercial, industrial, agricultural and civic welfare of the community. A full time office and staff is maintained to provide services and information to citizens and the travelling public.

#### NEWSPAPER, RADIO AND T.V.

The Brantford Expositor serves Brantford and area with a daily newspaper. Five representatives of metropolitan dailies reside in the city. Radio station C.K.P.C., 10,000 watts, gives local coverage and is affiliated with the Canadian Broadcasting Corporation. Two television stations serve the area.

#### HOTELS AND MOTELS

Graham Bell Hotel - 36 rooms	753-3431
Hotel Kerby - 80 rooms	752-5481
Bell City Motel - 23 units	756-5236
Four Star Motel - 21 units	753-8424
Grant Motel - 24 units	753-8451
Jolly Baron Inn - 75 units	753-7371
Holiday Inn - 123 units	753-8651
Mohawk Motel - 23 units	753-8621
Plaza Motel - 13 units	753-5553
Sherwood Inn Motel - 24 units	756-5261
Sunset Motel - 10 units	753-2631
Twin Gates Motel - 13 units	752-6554

#### LIBRARY

The Brantford Public Library offers a wide range of books (90,000 volumes), long playing records, films, children's library, "shut-in" service and a continuing art display.

THE BRANTFORD INDUSTRIAL COMMISSION

City Hall

BRANTFORD, ONTARIO, CANADA

# Industrial Development Data

## CIVIC DATA

## SECTION 10

### HOUSING

In 1969 new housing accommodation in Brantford was increased by 442 units which included 173 single family homes. This was a decrease over 1968 of 9 units. It is noted that over the past five years our housing stock has increased by some 2000 units

For further development we currently have a number of serviced lots available for new residential building as the market demands.

<u>BUILDING CLASSIFICATION</u>	<u>1968</u>	<u>1969</u>
TOTAL NUMBER OF SINGLE DWELLING UNITS	13,399	13,700
Duplexes	1,079	1,100
Triplexes	104	110
Fourplexes and Sixplexes	153	200
Apartment houses	68	70
TOTAL NUMBER OF RESIDENTIAL BUILDINGS	14,803	15,186
Number of apartment units	1,098	1,259
Number of townhouse units	nil	270
TOTAL DWELLING UNITS	16,203	17,009
Population per dwelling unit	3.40	2.82

THE BRANTFORD INDUSTRIAL COMMISSION

City Hall

BRANTFORD, ONTARIO, CANADA

# Industrial Development Data

## CIVIC DATA

SECTION 10

### EDUCATION

The City of Brantford is part of the Brant County Board of Education and the schools in the city are operated by this Board.

The Board provides educational opportunities from Kindergarten to Grade 13 in all areas of instruction, and the programs are comparable to those in any other Ontario Municipality.

Special Education, including a school for the Mentally Retarded, is provided for students with learning disabilities.

The Board operates 6 Secondary Schools, 4 of which are completely composite, 1 provides Arts and Science and Business and Commerce and the 6th is a Special Vocational School for Occupational students.

There are 54 elementary schools - 30 in the City and 24 in the surrounding County.

All of these schools are well staffed and provided with special assistance by well trained supervisors.

### EVENING CLASSES AND ADULT EDUCATION

In addition to the regular day classes, evening classes are offered in advanced academic and technical subjects, commercial work, home economics, industrial subjects and special subjects such as art, English for New Canadians and Conversational French.

### MANPOWER RETRAINING

In co-operation with the Manpower Retraining Department of the Ontario Department of Education, the Brant County Board of Education operates an Adult Retraining Program and an Adult Counselling Service.

The Counselling service is available to all post secondary school persons for advice on further education and training opportunities.

The Manpower Retraining Program provides upgrading and retraining classes for unemployed persons. It also arranges for up-dating courses in co-operation with industry.

There is a branch campus of Hamilton's Mohawk College in Braneida Industrial subdivision which is used by the Manpower Retraining Department of the Ontario Department of Education to retrain unemployed persons.

THE BRANTFORD INDUSTRIAL COMMISSION

City Hall

BRANTFORD, ONTARIO, CANADA



EDUCATION

THE BRANT COUNTY SEPARATE SCHOOL BOARD

The Brant County Separate School Board has under its jurisdiction 17 elementary schools with grades from kindergarten to grade 8. The total enrollment in the separate schools is approximately 3,500 students.

The Elementary Separate Schools now come under the jurisdiction of the Department of Education for the Province of Ontario, with a Superintendent appointed by the Brant County Separate School Board.

On the secondary level there are two schools known as Providence College and St. John's College. St. John's College is operated by the Fathers of the Resurrection and at present has an enrollment of 290 all male students. This school is modernly equipped including a gymnasium-auditorium. Offered is a general course including the commercial option under the Department of Education of the Province of Ontario. The Providence College, an all girl college, is operated by the Sisters of Providence. This college has an enrollment in grades 9 to 12 inclusive of approximately 250 students. The grade 13 students receive their education at St. John's College. For information respecting enrollment in the elementary schools under the auspices of the Brant County Separate School Board, please contact Mr. J.L. Bannon, Secretary and Superintendent of Schools, Fairview Drive, telephone number 756-5451.

MUNICIPAL PARKS & RECREATION

GENERAL

Public recreation services are administered co-operatively by the Parks Board and the Recreation Commission. There are 61 park areas comprising 704 acres of land. These areas are designed to provide a reasonable balance between active recreation areas and ornamental and rest areas. Over 250 acres of additional lands have been acquired for future development.

Public school grounds are used as public parks after school hours; permits are issued by the Recreation Commission in the same way as for public parks. The school buildings are rented directly by the Board of Education or through the Recreation Commission, depending on the use. There are special rates for non-profit recreation uses.

MAJOR RECREATIONAL FACILITIES AND PROGRAM HIGHLIGHTS

BRANTFORD AND DISTRICT CIVIC CENTRE

A new 3,000 seat arena and 500 seat auditorium was completed in March, 1967. This facility provides an attractive setting for Brantford's major spectator events and large community activities of all kinds.

GLENHYRST GARDENS

A beautifully landscaped former private estate now the home of Glenhyrst Arts Council - the cultural centre of the district. Activities include an annual arts ball, an antique show, a pantomime, classes in art, ballet and French and a Public Art Gallery.

GOLF COURSES

Brantford has four excellent golf courses. Two of these are 18 holes and two 9 holes.

MUNICIPAL PARKS & RECREATION SERVICES

GENERAL (cont'd)

MOHAWK PARK

A 45 acre, wooded park with trailer, tenting and picnic facilities, a wading pool, miniature golf course, 440 yard cinder track and football-soccer field. Home of Brantford's Annual Highland Games and the Brantford Track and Field Club.

NORTH PARK ARENA

A new artificial ice arena for minor sports, figure skating and other community activities.

LIONS PARK RECREATION CENTRE

Contains two outdoor artificial ice rinks, a floodlit football-soccer field, a floodlit softball diamond and Earl Haig Pool - an olympic size outdoor swimming pool - one of the largest in Ontario.

The following facilities are offered in this system:

- 16 ornamental and rest areas (one of these is Glenhyrst Gardens which includes gardens, arboretum and an arts centre)
- 32 supervised playgrounds
- 28 natural, 2 outdoor artificial ice rinks and 2 artificial ice arenas
- 8 wading pools and 2 swimming pools
- 1 new Civic Centre Arena-Auditorium
- 2 floodlit ball diamonds; 7 football-soccer fields (1 floodlit)
- 2 running tracks
- 1 45 acre picnic and camping area (Mohawk Park)
- 1 200 acre picnic and camping area (Woodland (Waterworks) Park)
- 17 hardball diamonds and 23 softball diamonds
- 2 municipal golf courses (18 holes, 9 holes), plus 2 privately owned golf courses.

MUNICIPAL PARKS & RECREATION SERVICES

GENERAL (cont'd)

A staff of 135 recreation leaders conduct the summer program of the Recreation Commission and a staff of 50 conduct the winter program. The Recreation Commission offers a variety of activities for people of all ages and interests, and can guide you to participation in the following activities and many more: Arts & Crafts; Hiking and Touring; Bands; Camping; Choirs and Choruses; Community Committees; Dancing; Riding; Senior Citizens; Sports of all kinds; Symphony Orchestra; Drama.

Classes of instruction are given by trained leaders of the Recreation Commission in swimming, diving, drama, track and field, tennis, hockey, skating, figure skating, skiing and gymnastics.

YOUTH - MUSIC - SENIOR CITIZENS

The highlights of the Brantford recreation programs have to be the wide variety of youth activities, the interest in music with the Brantford Symphony Orchestra, the Brantford Memorial Concert Band and the St. John's, Knights of Columbus Drum and Bugle Corps providing top entertainment and a senior citizens program second to none in Canada.

# Industrial Development Data

LABOUR

SECTION 11

## EMPLOYMENT AND AVERAGE WEEKLY WAGES AND SALARIES, BY INDUSTRY FOR THE BRANTFORD AREA

<u>Type of Industry</u>	<u>No. of Employees</u>		<u>Average Weekly Wages and Salaries</u>		
			<u>Dec/69</u>	<u>Dec/68</u>	<u>Dec/67</u>
Manufacturing	13,661	\$	116.86	110.33	103.90
Durable Goods	7,573	*	129.42	126.89	115.14
Non-Durable Goods	6,088	*	101.22	91.18	89.03
Industrial Composite	19,465		108.27	103.69	98.05

(\* Durable Goods and Non-durable Goods is a breakdown of manufacturing)

### Definitions:

Industrial Composite - The sum of the industries tabulated

Durable goods manufacturing - The sum of wood products, furniture and fixtures, primary metal industries, metal fabricating industries, machinery (except electrical), transportation equipment, electrical products, and non-metallic mineral products.

Non-durable goods manufacturing - The sum of the remaining manufacturing industries.

Source: D.B.S. Employment and Average Weekly Wages and Salaries, January, 1970.

These figures are based on reports from employers of 20 or more employees.

### AREA AND DISTANCE INVOLVED

The majority of Brantford employees live either in the City of Brantford or the immediately adjacent areas throughout the county, including the Town of Paris and the Villages of Burford and St. George, which lie about 7 to 9 miles from the centre of Brantford. There is also some commuting to employment in Brantford from those areas of Norfolk, Wentworth and Oxford counties, lying just outside the Brant County lines. The furthest point in the county is about 18 to 20 miles from the City.

THE BRANTFORD INDUSTRIAL COMMISSION

City Hall

BRANTFORD, ONTARIO, CANADA

LABOUR TURNOVER

This factor varies considerable in different types of industry, but the overall ratio is considered not excessive. For example, a fair-sized heavy industry with a total hourly-rated work force of 800-900 lists -

- 205 employees with 25 or more years of service
- 330 employees with 15 or more years of service
- 25 employees with 10 or more years of service
- 25 employees with 5 or more years of service
- 60 employees with 1 or more years of service.

In other words, over 50% of the workers have 15 or more years of service.

WORKING HOURS AND STATUTORY HOLIDAYS

Most industrial plants work a 40-hour week on a variety of 1, 2 and 3 shift schedules.

Statutory Holidays are commonly recognized as

- New Year's Day
- Good Friday
- Victoria Day
- Dominion Day
- Civic Holiday
- Labour Day
- Thanksgiving Day
- Christmas Day

In addition, Easter Monday and Remembrance Day are recognized as legal, though not public holidays. Many collective agreements list 8 to 10 as paid holidays.

TRAINING FACILITIES AND EDUCATION

While industrial apprenticeship has suffered a rather serious decline in the last 10-15 years, training plans are again receiving more attention recently. These include

- (a) Adult Education - Evening Classes - operated by the Brantford Board of Education, include academic, vocational and advanced technical courses in addition to cultural and interest classes.

TRAINING FACILITIES AND EDUCATION (cont'd)

- (b) Training for Unemployed - includes two phases -
1. Classes conducted by Board of Education in Basic Upgrading (Academic), Commercial, Commercial Art, Electronics Servicing, Welding, Machine Operating, Small Engine Servicing and Power Sewing Machine Operating. Most of these are of 10 months duration.
  2. On-the-job-training in programs approved by the Ontario Department of Labour and conducted by industries themselves. Training includes power sewing machine operating, foundry operations and machine and assembly work.
- (c) In-service Training of employed workers under Program "4" carried on by industry, but approved and assisted by Federal-Provincial grants.

# Industrial Development Data

## INDUSTRIAL DEVELOPMENT

SECTION 12

### INDUSTRIAL DEVELOPMENT IN BRANTFORD & VICINITY

<u>YEAR</u>	<u>NEW INDUSTRIES</u>
1961	2
1962	2
1963	1
1964	10
1965	15
1966	5
1967	5
1968	1
1969	4
TOTAL	<u>45</u>

The 45 industries establishing in this area during the period 1961-1969 occupy some 1,871,000 square feet and represent a capital investment of approximately 23 million dollars. During the same period, established industry in the area expanded by some 1,414,000 square feet for a capital investment of some 26 million dollars.

The impetus to this phenomenal development is greatly due to municipal and utility co-operation and initiative in providing all necessary services as required.

### INDUSTRIAL LANDS AVAILABLE

BRANEIDA (Brantford's North-Eastern Industrial Development Area) embracing some 1,000 acres of industrially zoned land is now approximately 50% occupied by industrial enterprises. Of the balance of the area some 350 acres are now fully serviced and ready for immediate occupancy and development.

In order that there be no misunderstanding of the term "fully serviced" we mean that the following are provided:

- storm sewer
- sanitary sewer
- municipal water
- natural gas
- hydro
- rail (if required)
- pavement
- curb & gutter
- street lights

Please enquire about our all-inclusive industrial land price.

THE BRANTFORD INDUSTRIAL COMMISSION

City Hall

BRANTFORD, ONTARIO, CANADA



there are  
many good  
reasons why

40, 41, 42

industries  
have chosen  
**BRANEIDA**  
industrial park\*  
as their new  
location.

39

42



40

41

## a numbers game?

Sometimes the gathering of facts on where to locate your plant can develop into a numbers game. While we'd be proud to have you as Number 43, we also want to assure you that you'll be far more personal to us than a mere number.

Brantford has enjoyed success in attracting industry (33 new industrial projects in 6 years, representing 1,863,555 sq. ft. of *new* building).

While there are many reasons involved in this success, perhaps the fact that we are aggressively and genuinely interested in attracting industry to maintain our high economy . . . our overall balanced approach to industrialization . . . and our sincere willingness to co-operate in any way we can, are some of the factors that have contributed a great deal to our success. We would sincerely welcome the opportunity to be of service to you.

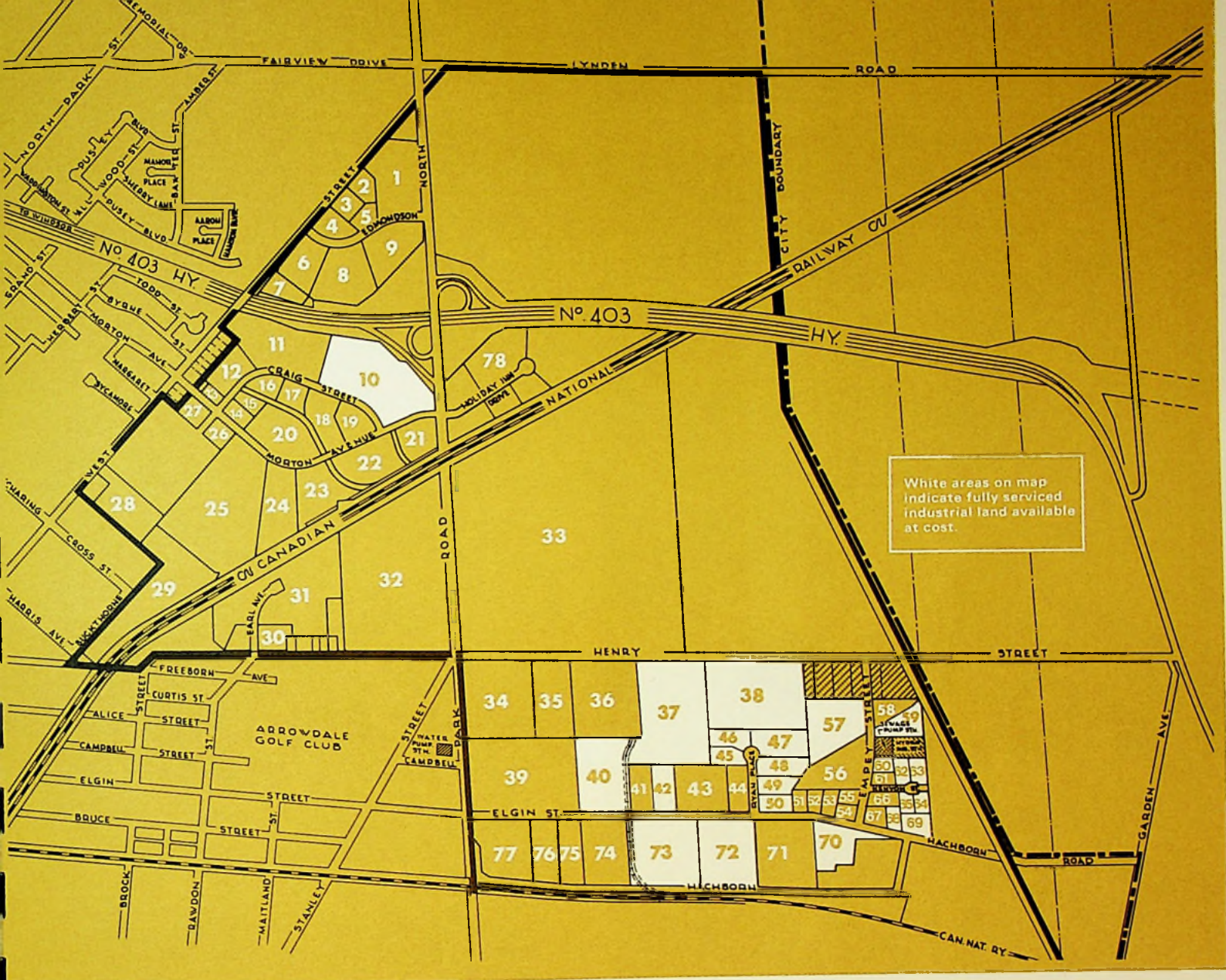
The Brantford Industrial Commission.

## BRANEIDA industrial park

IN BRANTFORD, ONTARIO, CANADA

deserves your consideration because it offers everything you probably need. Listed here are some numbers that will be important in your plant site selection:

- 1 Utilities completely installed on the frontage streets.
- 2 Protective industrial zoning.
- 3 Land at our serviced cost.
- 4 Sanitary sewers to modern sewage plant.
- 5 Storm sewers to proper outlet.
- 6 City water at industrial pressures.
- 7 Natural gas at industrial rates.
- 8 Hydro to your requirements.
- 9 Rail sidings to your property.
- 10 Paved streets with proper base.
- 11 Municipal street lighting.
- 12 Industrial bus services.
- 13 Complete street maintenance.
- 14 City police and fire protection.
- 15 Throughway from the Niagara Peninsula and Metro Toronto to Brantford.
- 16 Ideal geographic location.
- 17 A high quality labour force.
- 18 A healthy cultural, social, educational, recreational and religious environment.
- 19 A City administration with a firm grasp of their civic obligations, and with the sound, financial resources to provide necessary services.



# Current progress in **BRANEIDA**

*Your neighbours in Braneida will be these progressive companies.*

- |   |   |                                      |  |
|---|---|--------------------------------------|--|
| 1 Agnew-Surpass Shoe Stores Ltd.        | 20 National Pressed Glass Ltd.          | 40 For Sale                          | 60 For Sale                              |
| 2                                       | 21 Optioned                             | 41 Optioned                          | 61 J. D. Reed Machine Ltd.               |
| 3 Radio Station C.K.P.C.                | 22 Melnor Industries Ltd.               | 42 For Sale                          | 62 For Sale                              |
| 4 Eagle Precision Tool Ltd.             | 23 Gaco Products Ltd.                   | 43 Raymond Industrial Equipment Ltd. | 63 For Sale                              |
| 5 Maxtower Company                      | 24 Thiokol Fibres Canada Ltd.           | 44 Silverwood Dairies Ltd.           | 64 For Sale                              |
| 6 Brantford Public Utilities Commission | 25 Grace Containers Ltd.                | 45 For Sale                          | 65 For Sale                              |
| 7 Douglas-Hogarth Ltd.                  | 26 Oliver B. Clubine Ltd.               | 46 For Sale                          | 66 Sold                                  |
| 8 Bro-Dart Industries (Canada) Ltd.     | 27 M. Loeb Ltd.                         | 47 For Sale                          | 67 White Supply Co. Ltd.                 |
| 9 Anchor Coupling Canada Ltd.           | 28 Bell City Foundry (Brantford) Ltd.   | 48 For Sale                          | 68 For Sale                              |
| 10 For Sale                             | 29 Red-D-Mix Concrete Ltd.              | 49 For Sale                          | 69 For Sale                              |
| 11 Toxpack Limited                      | 30 Ace Welding & Boiler Co. Ltd.        | 50 For Sale                          | 70 For Sale                              |
| 12 United-Carr Canada Ltd.              | 31 City of Brantford Corporation Yard   | 51 Brantford Engineering Ltd.        | 71 Mohawk College Adult Education Centre |
| 13 Brandofflex Limited                  | 32 Ladish Company of Canada Ltd.        | 52 Sold                              | 72 For Sale                              |
| 14 Stainless Steel Products Ltd.        | 33 Massey-Ferguson Industries Ltd.      | 53 For Lease                         | 73 For Sale                              |
| 15 W. Cockram & Company Limited         | 34 Chicago Rawhide Products Canada Ltd. | 54 Sold                              | 74 Harding Brantford Ltd.                |
| 16 Brant Beverages Ltd.                 | 35 Finch & Sons Transport Ltd.          | 55 Sold                              | 75 Berlet Electronics Ltd.               |
| 17 Canteen Canada Ltd.                  | 36 Crane Canada Ltd.                    | 56 Optioned                          | 76 Bell Telephone Company Depot          |
| 18 Les Dunsdon Ltd.                     | 37 For Sale                             | 57 For Sale                          | 77 Renold Chains Manufacturing Ltd.      |
| 19 Canadian Cylinder Company            | 38 For Sale                             | 58 H. Boehmer & Company Ltd.         | 78 Holiday Inn.                          |
| Victoria Transport Ltd.                 | 39 Bay State Abrasive Products Ltd.     | 59 For Sale                          |  |

PROVINCE OF  
ONTARIO, CANADA



## Ideally located for planned expansion

Put your left foot on raw materials, your right foot on markets and between stands the ideal plant location. Braneida is ideally located within easy reach of all types of manufacturing materials and with direct access to all major markets. Brantford is situated in the heart of an area that is enjoying vigorous growth, where one-sixth of Canada's population lives within a 75-mile radius.

**Highways** — Braneida is strategically bisected by the new 403 Thruway, which links Brantford with all major marketing areas. Toronto is about 1 hour away; Detroit is approximately 5½ hours away; Montreal is about 7½ hours and Buffalo 2½ hours. An ample number of truck transports facilitate the quick and easy flow of raw and finished products.

**Railways** — Braneida is serviced by industrial spurs that connect with all major Canadian railways. These in turn link with U.S.A. railways.

**Airports** — Located on the immediate outskirts of the City of Brantford, a municipal airport offers complete refueling and servicing facilities for Company planes. It is a Canadian Customs Port of Entry. Toronto International Airport is only one hour away by road.

**Waterways** — Excellent St. Lawrence Seaway berthing and terminal facilities are a mere 25 miles from Braneida.

## BRANEIDA industrial park

It will be our pleasure to provide any additional information you may require. Please write, wire or telephone in complete confidence to:

**BRANTFORD INDUSTRIAL COMMISSION**  
CITY HALL / BRANTFORD, ONTARIO, CANADA  
Telephone (519) 759-4150

*Niagara-Iroquoia  
The Historic Peninsula*



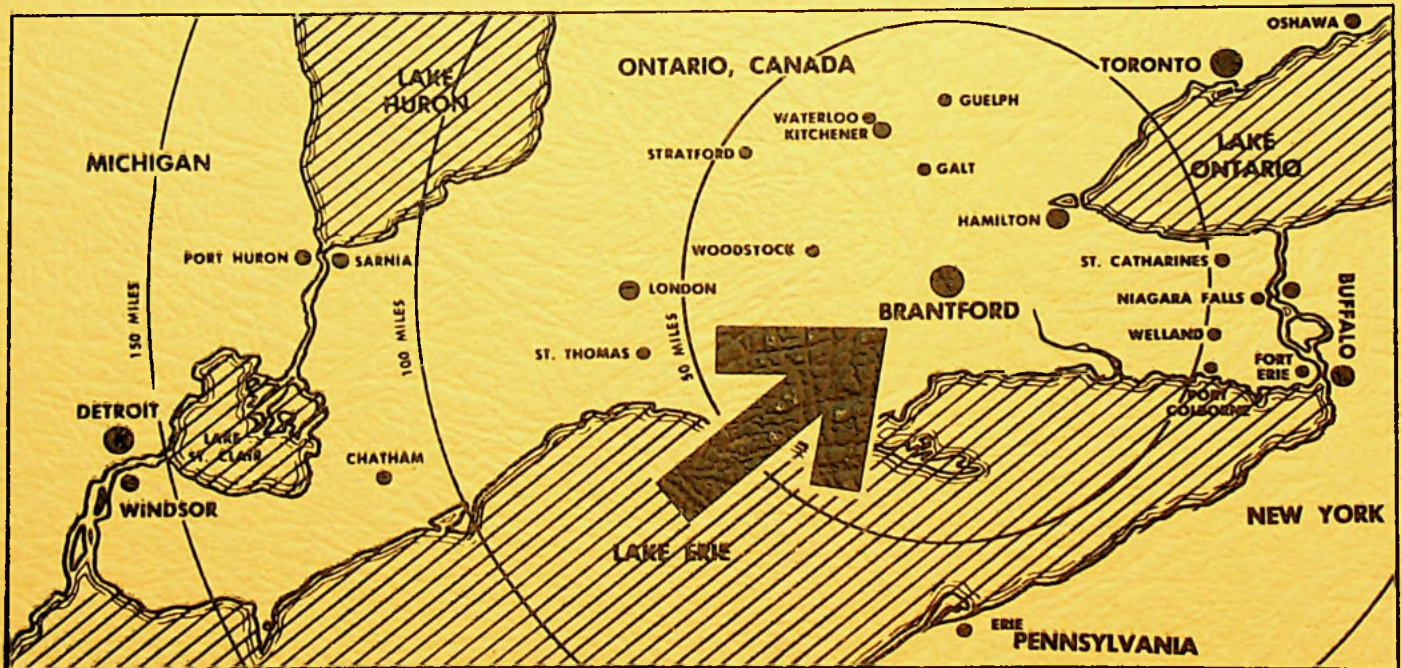
*Ontario, Canada*



3 9154 00167376 3

***INDUSTRY IS ON THE MOVE TO***

# Brantford



**BRANTFORD INDUSTRIAL COMMISSION**  
CITY HALL / BRANTFORD, ONTARIO, CANADA