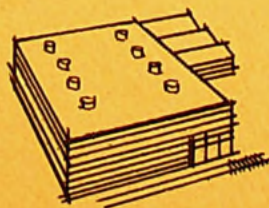


MAKE YOUR OWN ASSESSMENT OF

Brantford

HERE ARE THE

facts



R
381
Brantford In-
dustrial Comm

**Local
History**

BRANTFORD INDUSTRIAL COMMISSION
CITY HALL / BRANTFORD, ONTARIO , CANADA

BRANTFORD PUBLIC LIBRARY

APR 1988

BRANEIDA

X

BRANTFORD PUBLIC LIBRARY
REFERENCE DEPARTMENT

SR^v

This book must NOT be taken from
this Department.

Class R 381 B Acc. No. Desk Ref. C4 (1967)



Shopping for a plant site?

Here are 14 practical advantages to locating in

BRANEIDA*

* Brantford's North Eastern Industrial Development Area



Fully organized industrial sites

Your company, seeking a new plant location, is rightfully concerned about the high cost of services AFTER the site is purchased. The City of Brantford, Ontario, is fully aware of this problem and, when you locate in Braneida, you don't have to worry about the future costs of services. Braneida services are unusually complete, even to pavement. Compare the list of advantages below with any proposals you may have and it will become obvious that Braneida, in Brantford, Ontario, is by far the best choice for your new plant location.

- | | |
|--|------------------------------------|
| 1 Sanitary sewers to sewage plant | 8 Municipal street lighting |
| 2 Storm sewers to proper outlet | 9 Industrial bus services |
| 3 City water at industrial pressures | 10 Complete street maintenance |
| 4 Natural gas at industrial rates | 11 #403 Freeway interchange |
| 5 Hydro to your requirements | 12 City police and fire protection |
| 6 Rail sidings to your property
(if required) | 13 Protective industrial zoning |
| 7 Paved streets with proper base | 14 Land at our cost |

R
381
B
c4

all utilities are completely installed to your property line!

BRANEIDA

The cost of land is a very small part of the overall expenditure for site, buildings and equipment. Yet everyone wants the most value for money spent. This is exactly what you receive in Braneida where you can purchase land at our engineering cost.

32 industrial sites are already occupied in Braneida and over 350 serviced acres are available (July 1967). There is still a fine selection of sites from two to two hundred acres to choose from.

If you're shopping for a new plant location, Braneida, in Brantford, Ontario, Canada, has everything you'll need.



F. W. KINNON

Current progress in **BRANEIDA**

Blue tone on map indicates fully serviced industrial land available at cost.

Your neighbours in Braneida will be the progressive companies listed at the right.

- | | | |
|---|--|--|
| 1. Agnew Surpass Shoe Stores Ltd. (whse.) | 16. | 31. Ladish Company of Canada Ltd. |
| 2. | 17. Les Dunsdon Ltd. | 32. Allied Innkeepers Ltd. (Holiday Inn) |
| 3. Radio Station CKPC, Brantford | 18. Canadian Cylinder Co. | 33. Massey-Ferguson North American Combine |
| 4. Eagle Precision Tool Ltd. | 19. Victoria Transport Ltd. | 34. Chicago Rawhide Products Canada Ltd. |
| 5. Maxtower Co. | 20. National Pressed Glass Ltd. | 35. Finch & Sons Transport Ltd. |
| 6. Brantford Public Utilities Commission | 21. | 36. Bay State Abrasive Products Ltd. |
| 7. Douglas-Hogarth Ltd. | 22. Melnor Industries Ltd. | 37. Renold Chains Manufacturing Ltd. |
| 8. Bro-Dart Industries (Canada) Ltd. | 23. Gaco Products Ltd. | 38. Bell Telephone Co. Construction Depot |
| 9. Anchor Coupling Canada Ltd. | 24. | 39. Berlet Electronics Ltd. |
| 10. Domco Vinyls Ltd. | 25. W. R. Grace & Co. of Canada Ltd. | 40. Harding Brantford Ltd. |
| 11. Texpack Ltd., Surgitex Ltd. | 26. Oliver B. Clubine Ltd. | 41. Raymond Industrial Equipment Ltd. |
| 12. | 27. M. Loeb Ltd. (whse.) | 42. Crane Canada Ltd. |
| 13. Brandoflex Ltd. | 28. Bell City Foundry (Brantford) Ltd. | |
| 14. Stainless Steel Products Ltd. | 29. Red-D-Mix Concrete Ltd. | |
| 15. M-F Warehouse | 30. Ace Welding & Boiler Co. Ltd. | |

BRANEIDA

It will be our pleasure to provide any additional information you may require. Please write, wire or telephone in complete confidence to:

BRANTFORD INDUSTRIAL COMMISSION
CITY HALL / BRANTFORD, ONTARIO, CANADA
Telephone (519) 759-4150



Ideally located for industrial growth in **BRANTFORD, ONTARIO**

Braneida is situated in the heart of an area that is enjoying vigorous, unprecedented growth. Its central location provides industry with easy access to all types of manufacturing materials as well as various methods of distribution and shipping to all markets. Close to one-sixth of Canada's population is located within a 75-mile radius of Brantford.

Highways — Braneida is strategically bisected by the new 403 highway which links Brantford with all major marketing areas. An ample number of truck transport companies facilitate the easy flow of shipments.

Railways — Braneida is serviced by industrial spurs that connect with all major Canadian railways. These in turn link with U.S.A. railways.

Airports — Located on the immediate outskirts of the City of Brantford, a municipal airport offers complete refueling and servicing facilities. It is a Canadian Customs Port of Entry.

Waterways — Excellent St. Lawrence Seaway berthing and terminal facilities are a mere 25 miles from Braneida.

Industrial Development Data

TABLE OF CONTENTS

<u>ITEM</u>	<u>SECTION</u>
LOCATION	1
CLIMATE	2
POPULATION	3
MUNICIPAL ADMINISTRATION & FINANCES	4
MUNICIPAL TAXES	5
MUNICIPAL SERVICES	6
Police	
Fire Protection	
Streets and Roads	
Water	
Sewage	
Garbage - Industrial & Commercial Waste	
POWER SOURCES	7
Hydro	
Gas	
Fuel Oil	
Coal	
FINANCIAL DATA	8
TRANSPORTATION FACILITIES	9
Railways	
Passenger Bus Services	
Truck Transport	
Air Services	
Water Ways	
Customs	
CIVIC DATA - General, Housing, Education Recreation and Hospitals	10
LABOUR	11
INDUSTRIAL DEVELOPMENT	12
INDUSTRIAL LANDS AVAILABLE	12

THE BRANTFORD INDUSTRIAL COMMISSION

City Hall

BRANTFORD, ONTARIO, CANADA

Industrial Development Data

LOCATION

SECTION 1

GENERAL

The City of Brantford, Ontario is centrally located in Canada's most concentrated industrial area which surrounds the westerly end of Lake Ontario. Served by #2, #24, #53 and #54 Provincial Highways, Brantford is directly on #403 Highway presently under development which will project the Queen Elizabeth Way at Hamilton westerly to #401 at Woodstock. The Brantford section of this highway is now in full operation.

Road Miles - Brantford to:

Galt	17	St. Thomas	74
Hamilton	24	Buffalo	90
Kitchener	26	Oshawa	97
Guelph	31	Owen Sound	113
Oakville	42	Windsor	170
London	57	Detroit	171
St. Catharines	60	North Bay	270
Toronto	65	Ottawa	317
Niagara Falls	68	Montreal	405

30 Minutes from Seaway Port

Brantford is within 30 minutes by road and rail from the seaway port of Hamilton on Lake Ontario. This harbour provides seaway depth berthing at an ever-increasing number of wharves and terminals. The Port of Hamilton ranks high among Canada's leading seaports in total cargo tonnage handled.

General Statistics

Elevation above sea level - 702 feet
Longitude at City Hall - 80° 15' 46" W
Latitude at " " - 43° 08' 17" N
Incorporated as a Town - 1847
Incorporated as a City - 1877
1966 Population - 58,981

THE BRANTFORD INDUSTRIAL COMMISSION

City Hall

BRANTFORD, ONTARIO, CANADA

Industrial Development Data

CLIMATE

SECTION 2

CLIMATE (1966)

Annual Snowfall	37.70 inches
Annual Rainfall	29.56 "
Highest Recorded Temperature	94°F
Lowest Recorded Temperature	-5°F
Annual Mean Maximum Temperature	54.8°F
Annual Mean Minimum Temperature	37.3°F

EXTREMES IN PRECIPITATION

Most rain in one month	November	4.13 inches
Most rain in one day	July 27	2.37 "
Most rain in shortest time	July 27	2.37 "
Driest Month	October	1.25 "
Most snow in one month	January	22.84 "
Most snow in one day	January 22	9.0 "

EXTREMES IN TEMPERATURES

Hottest recorded	94°F	June 2-3, 1966
Coldest recorded	-5°F	January 16, 25, 29 and February 19, 1966.

PRECIPITATION & TEMPERATURE MAXIMUM/MINIMUM

MONTH	MAX TEMP · F	MIN TEMP · F	RAIN (")	SNOW (")
January	45	-5	0.10"	22.84
February	46	-5	1.26	6.6
March	67	12	3.15	2.9
April	73	28	3.43	1.9
May	83	28	1.38	
June	92	34	2.50	
July	94	47	2.77	
August	88	45	2.58	
September	86	34	3.77	
October	73	24	1.25	
November	62	17	4.13	
December	64	+4	3.24	8.6
		TOTALS	29.56	42.84

N.B: 1 inch of rain = 10 inches of snow

THE BRANTFORD INDUSTRIAL COMMISSION

City Hall

BRANTFORD, ONTARIO, CANADA

Industrial Development Data

POPULATION

SECTION 3

<u>YEAR</u>	<u>POPULATION</u>	<u>YEAR</u>	<u>POPULATION</u>
1900	16,276	1955	50,592
1910	21,964	1956	51,612
1920	30,549	1957	52,057
1930	30,153	1958	53,129
1940	31,135	1959	53,797
1945	35,312	1960	54,093
1950	36,532	1961	54,984
1951	36,602	1962	54,928
1952	36,854	1963	55,624
1953	37,118	1964	45,511
1954	37,229	1965	57,867
		1966	58,881

RACIAL ORIGIN - 1965 Mayor Ethnic Groups

British	38,448
French	3,005
German	2,673
Polish	2,061
Other	<u>12,680</u>
 TOTAL	 <u>57,867</u>

AVERAGE WEEKLY WAGES IN THE INDUSTRIAL COMPOSITE (A)

	<u>1967</u>	<u>1966</u>	<u>1965</u>
BRANTFORD	101.02	93.51	89.21
ONTARIO	106.55	99.46	94.13
CANADA	103.28	96.67	90.95

ESTIMATED POPULATION PROJECTION FOR THE CITY OF BRANTFORD

<u>Year</u>	<u>Population</u>
1968	61,000
1970	63,500
1975	70,000

(A) Preliminary: Source D.B.S. Employment and Average Weekly Wages and Salaries, July, 1967.

THE BRANTFORD INDUSTRIAL COMMISSION

City Hall
BRANTFORD, ONTARIO, CANADA

Industrial Development Data

POPULATION

SECTION 3

BRANTFORD TRADING AREA Cities, Towns and Townships

<u>COMMUNITY</u>	<u>DISTANCE</u>	<u>POPULATION (1966)</u>
Brantford	---	58,981
Paris	7 miles	6,243
Port Dover *	33 "	3,213
Simcoe *	24 "	9,941
Waterford *	17 "	2,460
Township of Brantford	---	8,851
" " Burford	13 "	5,624
" " South Dumfries	10 "	3,554
" " Oakland	8 "	1,328
" " Onondaga	10 "	1,225
" " Charlotteville *	27 "	6,040
" " Townsend *	14 "	5,369
" " Windham *	17 "	5,728
" " Woodhouse *	20 "	2,849
TOTAL		121,406

NOTE:

* - Townships and Towns in the County of Norfolk under our market influence and labour pool

--- Distance of the Townships are based on a centre to centre measurement between the townships concerned and the City of Brantford

THE BRANTFORD INDUSTRIAL COMMISSION

City Hall

BRANTFORD, ONTARIO, CANADA

Industrial Development Data

SECTION 3

POPULATION

POPULATION BREAKDOWN

The following is a population breakdown for the years 1955 to 1966 inclusive, with the percentage figure which each group relates to the total for that particular year.

	AGE 0-9	AGE 10-15	AGE 16-19	AGE 20-64	AGE 65 & OVER	TOTAL ALL AGES
1966	11,659	6,824	4,356	30,071	6,071	58,981
PERCENTAGE	19.77	11.57	7.39	50.98	10.30	
1965	11,495	6,832	4,051	29,578	5,911	57,867
PERCENTAGE	19.86	11.81	7.00	51.12	10.21	
1964	11,249	6,694	3,792	29,263	5,613	56,611
PERCENTAGE	19.87	11.83	6.70	51.68	9.92	
1963	11,161	6,546	3,441	28,877	5,599	55,642
PERCENTAGE	20.06	11.77	6.19	51.91	10.07	
1962	11,145	6,517	3,161	28,627	5,478	54,928
PERCENTAGE	20.29	11.87	5.75	52.12	9.97	
1961	11,255	6,272	3,107	28,850	5,500	54,984
PERCENTAGE	20.467	11.405	5.650	52.46	10.00	
1960	11,255	6,272	3,107	28,500	5,356	54,098
PERCENTAGE	20.586	11.275	5.554	52.69	9.90	
1959	8,953	5,838	2,829	28,535	5,445	53,797
PERCENTAGE	20.707	10.851	5.277	53.04	10.12	
1958	11,303	5,466	2,689	28,344	5,327	53,129
PERCENTAGE	21.273	10.287	6.061	53.35	10.03	
1957	10,985	5,188	2,468	28,292	5,124	52,057
PERCENTAGE	21.100	9.966	4.741	54.35	9.84	
1956	11,219	4,754	2,463	28,208	4,968	51,612
PERCENTAGE	21.737	9.211	4.772	54.65	9.63	
1955	10,847	4,457	2,376	28,027	4,888	50,592
PERCENTAGE	19.450	8.810	4.696	55.40	9.66	

% Increase: 1955 - 1965 Inc. 13.7%
 1960 - 1965 Inc. 7.0%
 1955 - 1960 Inc. 6.9%

THE BRANTFORD INDUSTRIAL COMMISSION

City Hall

BRANTFORD, ONTARIO, CANADA

Industrial Development Data

MUNICIPAL ADMINISTRATION & FINANCES

SECTION 4

The City Council, Public Utilities Commission, Board of Education and the Separate School Board are the elected bodies. City Council is the senior body.

CITY COUNCIL

is composed of the Mayor and ten Aldermen. The City is divided into 5 Wards with 2 Aldermen representing each ward.

THE PUBLIC UTILITIES COMMISSION

is composed of 1 Commissioner from each Ward plus the Mayor by virtue of office. The P.U.C. is responsible for providing water, hydro and inter-urban bus transportation. The Chairman is elected by the Board.

THE BOARD OF EDUCATION

is composed of ten Trustees with 2 elected from each ward plus one appointed representative from the Separate School Board (votes only on secondary school matters). The Chairman is elected by the Board annually.

THE SEPARATE SCHOOL BOARD

is composed of ten Trustees, 2 elected in each ward - elementary and secondary education.

ELECTIONS AND TERM OF OFFICE

Elections are held on the first Monday of December, every other year.

OUTSIDE BOARDS AND COMMISSIONS (APPOINTED)

Board of Police Commissioners
Board of Park Management and Cemetery Board
Recreation Commission
Glenhyrst Gardens Commission
Brantford Industrial Commission
Brantford Public Library Board
Brantford Planning Board
Zoning Committee of Adjustment
Brant County Health Unit
Board of Governors John Noble Home
Brantford Suburban Roads Commission
Brant Sanatorium Board
Brantford Airport Commission
Court of Revision

THE BRANTFORD INDUSTRIAL COMMISSION

City Hall

BRANTFORD, ONTARIO, CANADA

Industrial Development Data

MUNICIPAL ADMINISTRATION & FINANCES

SECTION 4

DEBENTURE DEBT DECEMBER 31

	<u>1965</u>	<u>1966</u>
PAYABLE FROM GENERAL TAXATION		
General	6,941,091.29	7,525,156.70
Schools	3,310,626.52	4,442,523.25
	10,251,717.81	11,967,679.95
PAYABLE BY PUBLIC UTILITIES		
Water	1,538,250.00	1,499,750.00
Hydro	277,500.00	245,000.00
Buses	NIL	30,000.00
RATEPAYERS' SHARE LOCAL IMPROVEMENTS	919,701.54	1,106,505.27
PAYABLE FROM PARKING REVENUE	400,000.00	380,000.00
TOTAL DEBENTURE DEBT (ISSUED BY CITY)	13,387,169.35	15,228,935.22

PER CAPITA COMPARISONS

	<u>1965</u>	<u>1966</u>
Gross debenture debt	243.48	268.25
Net taxable debt	185.60	218.22
Taxable assessment	2,123.80	2,099.13
Tax Levy	138.85	151.58
Tax Arrears	12.12	13.63

THE BRANTFORD INDUSTRIAL COMMISSION

City Hall

BRANTFORD, ONTARIO, CANADA

MUNICIPAL TAXES

SECTION 5

INDUSTRIAL TAXES IN BRANTFORD, ONTARIO

Taxes levied by the Municipality apply to:

1. Land
2. Buildings
3. Business Tax

LAND ASSESSMENT based upon:

1. Location and services
2. Use of property
3. Other criteria which require the professional estimate of a trained assessment officer

Assessments cannot be expressed accurately as a percentage of the market price since the evaluation standards of the assessment officers do not necessarily coincide with those of realtors. The acreage upon which a building is constructed and the property utilized immediately will be assessed at a higher rate than the unimproved acreage held for future expansion. Each parcel of industrial land, therefore, will be assessed by the same standard for each industry, but will vary according to the percentage of the property improved by construction and use.

BUILDING ASSESSMENT

Is based upon 1945 normal construction costs. In order for us to estimate the assessment of a proposed industrial building, it is necessary to see the specifications. Estimated costs by construction firms cannot be used since there are variations in these estimates.

BUSINESS TAX

In all Ontario Communities, including Brantford, a business tax is applied to all manufacturing industries at a rate of 60%. (This is statutory).

1967 MILL RATE

The tax rate for all commercial and industrial properties in Brantford in 1967 is 80.5 mills. This applies in the calculation of land, building and business tax. We will provide an estimate of municipal taxes when the acreage of property and building specifications are provided by any interested company.

THE BRANTFORD INDUSTRIAL COMMISSION

City Hall

BRANTFORD, ONTARIO, CANADA

Industrial Development Data

MUNICIPAL TAXES

SECTION 5

INDUSTRIAL TAXES IN BRANTFORD (cont'd)

SAMPLE ONLY

Land 10 acres - Assessment.....\$16,250
 3 " assessed @ \$2,500 per acre
 7 " " @ \$1,250 " "

Building 40,000 square feet + office - Assessment \$117,730
 (Note: Estimated cost of building - \$320,000)

Land Tax: 7 acres @74.4 mills...\$ 651.00
 3 acres @80.5 mills... 603.75
 Building tax @80.5 mills..... 9,477.26

Total - land + building.....\$ 10,732.01

Business tax - 60% of 3 acres of
 land + total buildings x 80.5
 mills..... 6,048.77

Total tax.....\$ 16,780.78

STATISTICS

Assessment Ratio for the Years 1957 - 1966 inclusive

<u>YEAR</u>	<u>RESIDENTIAL</u>	<u>COMMERCIAL</u>	<u>INDUSTRIAL</u>
1966	57.71%	21.03%	21.26%
1965	57.87%	20.82%	21.29%
1964	58.60%	20.91%	20.49%
1963	57.86%	21.57%	20.57%
1962	59.01%	21.78%	19.21%
1961	58.61%	21.61%	19.78%
1960	58.09%	21.38%	20.53%
1959	58.26%	20.70%	20.94%
1958	57.53%	21.34%	21.13%
1957	60.10%	19.65%	20.25%

MUNICIPAL SERVICES

SECTION 6

POLICE

A staff of 79 police officers and detectives; 4 police cadets; 6 administrative personnel; under the leadership of a Chief of Police; Deputy Chief of Police and three department heads comprise the Police Department of the City.

A fleet of radio equipped vehicles; motor cycles and van, patrol the city area regularly.

In addition to routine patrols, the Department is prepared to:

- Accept, check telephone calls from plant watchmen and to make an immediate personal investigation should a call not be received on time
- Escort payrolls from bank to plant or sums of money from plant to bank at no charge
- Supply confidential information to personnel selection officers on applicants for positions
- Accept company security guards in police department instruction classes
- Co-operate fully with security guards on company investigations if requested to do so
- Make surveys on traffic conditions and make recommendations to the Traffic Committee for improvements in traffic safety or traffic flow in any area
- Conduct evening classes in Traffic Safety
- Train and administer an Auxiliary Police Force under the E.M.O. for local or national emergency
- Train and maintain adult school-crossing guards and juvenile school patrols.

Industrial Development Data

MUNICIPAL SERVICES

SECTION 6

FIRE PROTECTION

The staff consists of a Chief, Deputy Chief, Secretary, Fire Prevention Officer, 2 Fire Inspectors, 4 Captains, 8 Lieutenants, 1 Motor Mechanic and 81 full time Fire Fighters.

EQUIPMENT:

- 1 - 1964 King Seagrave, 1050 G.P.M. Pumper
- 1 - 1959 King Seagrave, 1050 G.P.M. Pumper
- 1 - 1955 King Seagrave, 850 G.P.M. Pumper
- 1 - 1950 Seagrave (F.W.D. Chassis) 550 G.P.M. Pumper
- 1 - 1949 Seagrave, 750 G.P.M. Pumper
- 1 - 1944 85' LaFrance Aerial Ladder Truck with 220' of ground ladders
- 1 - 1961 100' King Seagrave Aerial Ladder Truck with 204' of ground ladders
- 1 - 1957 Dodge custom built van rescue or disaster unit, fully equipped with emergency equipment for rescue work
- 4 - Sedan cars, (1-1964 Chief's car; 1-1965 Deputy Chief's car; 2-1963 Inspector's cars)
- 1 - 1964 3/4 ton pick-up truck
- 1 - 1961 Pontiac custom built ambulance
- 1 - 1964 Pontiac custom built ambulance

All equipment including the ambulances are equipped with two way short wave radio. The pumps on the fire equipment are of most modern large capacity centrifugal design. The trucks are also equipped with modern nozzles and fire fighting chemicals.

The per capita fire loss over the past five years was \$6.78 as compared to approximately \$8.00 for Canada. The ten year period per capita loss was \$5.71. Our average was increased by an exceptionally bad year in 1962 when two hotels were destroyed by fire with a per capita loss of \$14.80 for 1962, this, of course, has raised our average. Brantford has been given a Class "A" rating by insurance companies because of our very low loss ratio for all class of risk.

Co-operation is extended to all industrial plants where management requests fire prevention surveys, fire prevention programs or fire protection instruction. Many industrial plant fire brigades have been organized and trained and films shown to personnel on fire safety and the operation of fire extinguishers. This service is available to all our industries.

THE BRANTFORD INDUSTRIAL COMMISSION

City Hall

BRANTFORD, ONTARIO, CANADA

Industrial Development Data

MUNICIPAL SERVICES

SECTION 6

STREETS AND ROADS

STREET MILEAGE AS OF DECEMBER 31, 1966 by PAVEMENT TYPE

	<u>1963</u>	<u>1964</u>	<u>1965</u>	<u>1966</u>
1. Concrete Surface	20.0	20.0	20.0	19.4
2. Bituminous Surface				
- concrete base	11.8	11.4	11.4	10.2
3. *High Cost Flexible	24.1	26.2	31.2	41.5
4. Low Cost Bituminous	68.7	69.6	68.1	63.8
5. Surface Treated gravel	37.6	37.1	36.2	34.7
6. Surface untreated gravel	<u>2.4</u>	<u>2.1</u>	<u>2.0</u>	<u>1.8</u>
	164.6	166.4	168.9	171.4

*HMST included

PARKING FACILITIES

The City of Brantford has 362 off-street parking spaces and 545 on-street parking available in the downtown district. In addition, the canal parking lot located one block off the downtown area has space to accommodate 415 cars.

WATER

The City of Brantford obtains its water supply from the Grand River and is assured of an abundant supply throughout the entire year. The capacity of our existing system is 12,000,000 G.P.D. with immediate plans to increase to 15,000,000 G.P.D. Consumption of water at normal periods is around 6 million G.P.D. peaking to 11 million G.P.D. The treatment process consists of free residual chlorination, aeration, dechlorination, activated carbon for taste and odour control, coagulation and settling using aluminum sulphate and activated silica, Ph control using aluminum sulphate and activated silica, Ph control using calcium hydrate, filtration, fluoridation and post treatment of chlorine residual using sulphur dioxide and ammonia. The analysis of the finished water is described on the following page.

THE BRANTFORD INDUSTRIAL COMMISSION

City Hall

BRANTFORD, ONTARIO, CANADA

Industrial Development Data

MUNICIPAL SERVICES

SECTION 6

WATER ANALYSIS

PH	8.2	Iron	Trace
Turbidity	9.3 to 0.1 ppm	Manganese	None
Dissolved Solids	(300 normal)	Calcium (as Cao)	89-100 ppm
Total Alkalinity		Mg O	29-80 "
(as CaCo ₃)	(175 normal)	SO 4	50-70 "
Silica	5 ppm	NO 3 as N	9.4-2.5 "
Total Hardness	(310 normal)	Organic Nitrogen	9.4-1.8 "
(as CaCo ₃)		Fluorine (as F)	
		Chloramine Residual	0.3-0.5 ppm

RATE SCHEDULE, TWO-MONTH BILLING PERIOD

(All water rates are net)

The rate consists of a basic charge based on installed meter size, plus a consumption charge for water used.

METER SIZE	BASIC CHARGE	MINIMUM BILL
5/8"	2.50	4.00
3/4"	3.74	6.72
1"	5.90	11.88
1 1/2"	5.24	19.81
2"	7.47	38.77
3"	12.04	65.62
4"	23.36	123.26
6"	40.36	209.00
8"	57.36	337.75

CONSUMPTIONS RATES

Consumption charge in cents per 100 cubic feet

First Rate up to	7200 cu. ft.	18¢
Rate between	7200 and 60,000	14¢
Rate above	60,000	10.9¢

Water supply for sprinkler system and fire protection is supplied un-metered at no additional charge. Water connection for this service will be made at the customers expense.

THE BRANTFORD INDUSTRIAL COMMISSION

City Hall

BRANTFORD, ONTARIO, CANADA

Industrial Development Data

MUNICIPAL SERVICES

SECTION 6

SEWAGE DISPOSAL

Brantford has an activated sludge sewage disposal plant which provides secondary treatment. The capacity is 12½ million gallons per day.

GARBAGE - INDUSTRIAL WASTE REMOVAL

Garbage disposal is conducted by sanitary land fill. The municipality does not provide collection of garbage for industry. However, the handling of industrial waste can be contracted to contractors such as:

Brant Salvage Service	125 Stanley Street	756-6832
Canada Disposal	33 Rose Avenue	752-2337
House, Allan Contractor	16 Drummond Street	753-6658
Proper, G.W.	2 Park Avenue	752-8111

In the event an industry would prefer to dispose of its own industrial waste, the city dump, located on the south side of the City (Morrison Avenue) is open daily from 7.00 a.m. to 8.00 p.m. Monday through Friday. Saturday hours are from 7.00 a.m. to 7.00 p.m., Sunday hours are from 11.00 a.m. to 7.00 p.m. and holiday hours are 7.00 a.m. to 7.00 p.m.

THE BRANTFORD INDUSTRIAL COMMISSION

City Hall

BRANTFORD, ONTARIO, CANADA

Industrial Development Data

POWER SOURCES

SECTION 7

HYDRO

POWER SUPPLY

The Public Utilities Commission is prepared to supply electric power to any industry in virtually unlimited quantity upon reasonable notice. At the present time, various industries are supplied with either 27.6 kv, 3 phase, 3 wire; 4,160 volts, 3 phase, 4 wire; and 500 volts, 3 phase. Commercial and industrial establishments are also supplied with 120/208 volts, 3 phase, 4 wire; and 115/230 volts, single phase. The frequency of supply is 60 cycles. The transformer capacity is 120,000 K.V.A. The commercial and industrial rates are listed below. For detailed information, reference should be made to the Public Utilities Commission Office at 50 Wellington Street.

COMMERCIAL ELECTRIC RATES

Service charge - 5¢ gross per 100 watts of installed capacity, or maximum demand.

Consumption charge - 1.8¢ per kilowatt-hour for the first 100 hours' use of the installed capacity or maximum demand. All additional monthly consumption at 0.7¢ per Kw hrs. Prompt payment discount - 10%.

INDUSTRIAL POWER RATES

Service charge - \$1.20 per K.W. per month, of connected load or maximum demand.

Consumption charge - 1.4% per K.W. hour for the first 50 hours use per month of connected load or maximum demand, plus 0.9¢ per K.W. hour for the second 50 hours use per month of connected load or maximum demand, plus 0.30¢ per K.W. hour for all additional monthly consumption.

Prompt payment discount - 10%. Special discounts are applicable for power supplied at 4,160 volts and 27.6 kv.

THE BRANTFORD INDUSTRIAL COMMISSION

City Hall

BRANTFORD, ONTARIO, CANADA

Industrial Development Data

POWER SOURCES

SECTION 7

NATURAL GAS

Natural gas service is provided by Union Gas Company of Canada Limited - which has been serving southwestern Ontario for half a century.

SOURCE

The natural gas supplied here comes primarily from Western Canada, via the Trans-Canada Pipeline. But it may also come, on occasion, from gas fields located in Southwestern Ontario or the Southern United States.

PIPELINES

The city is served by three transmission pipelines - an 8 inch diameter line from the south, a 10 inch diameter line from the west and a 12 inch diameter line from the north. Distribution within the city is by means of a network of street mains which is constantly being enlarged as the demand warrants.

RELIABLE SUPPLY

Union Gas Company's policy of purchasing natural gas from reliable sources on a long-term, large-volume basis, assures the city of a gas supply adequate to meet all types of requirements for many, many years into the future. The effective utilization of underground gas storage facilities (located within practical, economic reach of the city) offers further assurance of a dependable supply.

GAS CHARACTERISTICS

The natural gas supplied by Union Gas has a nominal rating of 1,000 BTU's, while the specific gravity is slightly more than half that of air. Hydrogen sulfide and sulfur content range from nil to well below the acceptable maximum.

GAS RATES

On the following page are the natural gas rates approved for this area by the Ontario Energy Board.

THE BRANTFORD INDUSTRIAL COMMISSION

City Hall

BRANTFORD, ONTARIO, CANADA

Industrial Development Data

POWER SOURCES

SECTION 7

NATURAL GAS (Cont'd)

GAS RATES AND COST OF GAS SERVICE - BRANTFORD AREA

<u>Net Gas Rate</u>	<u>Monthly MCF Consumption</u>	<u>Am't. Net Gas Bill Monthly</u>	<u>Average Net Cost Per MCF</u>
\$.50 per CCF for 1st 2 CCF monthly	.2	1.00	\$----
\$.95 " MCF from 2 CCF to MCF monthly	2.0	2.71	1.35
\$1.035 per MCF from 2 to 10 MCF monthly	10	10.99	1.10
\$.985 per " from 10 to 100 MCF monthly	25	25.77	1.03
	50	50.39	1.01
	75	75.02	1.00
	100	99.64	.996
	200	194.64	.973
\$.95 per MCF 100 to 500 MCF monthly	300	289.64	.965
	400	384.64	.962
	500	479.64	.959
	600	569.64	.949
\$.90 per MCF 500 to 1,000 MCF monthly	700	659.64	.942
	800	749.64	.937
	900	839.64	.933
	1,000	929.64	.930
	\$.85 per MCF 1,000 to 2,000 monthly	1,500	1,354.64
2,000		1,779.64	.890
3,000		2,579.64	.860
4,000		3,379.64	.845
5,000		4,179.64	.836
6,000		4,979.64	.830
7,000		6,779.64	.826
\$.75 per MCF 7,000 to 14,000 MCF monthly	8,000	6,529.64	.816
	9,000	7,279.64	.809
	10,000	8,029.64	.803
	11,000	8,779.64	.798
	12,000	9,529.64	.794
	13,000	10,279.64	.791
	14,000	11,029.64	.788
	\$.70 per MCF all over 14,000 MCF monthly	15,000	11,729.64
20,000		15,229.64	.761
25,000		18,729.64	.749
30,000		22,229.64	.741

"Per MCF" means "Per 1,000 cubic feet"
 "Per CCF" means "Per 100 cubic feet"

THE BRANTFORD INDUSTRIAL COMMISSION

City Hall
 BRANTFORD, ONTARIO, CANADA

Industrial Development Data

POWER SOURCES

SECTION 7

FUEL OIL

Source of supply: Major refineries in the Bronte and Toronto Area.

GRADES OF FUEL OIL AVAILABLE

COST/GALLON

Stove Oil	\$ 0.21
Furnace Oil	0.181
Light Industrial Oil	\$0.13 to \$0.15
Bunker "C" (Light, medium & heavy)	\$0.08 to \$0.11 - depending on grade

COAL

Source of supply - U.S.A. - either off Canadian docks or by rail from various U.S.A. fields.

Grades available and cost per ton delivered as follows:

Anthracite - Domestic - all sizes ranging from
\$25.00 to \$29.00

Coke - various sizes ranging
from \$30.00 to \$34.00

Bituminous Lump & Egg - ranging from \$20.00 to
\$22.00

Domestic Stoker Coals - all sizes and wide range
of qualities, each with
wide range of B.T.U. and
specifications, \$22.00 to
\$26.00

Commercial & Industrial Stoker Coals

Wide variety of sizes, specification and from wide range
of American fields, Kentucky, Pennsylvania, Virginia,
West Virginia.

Corresponding wide range in prices from \$12.00 to \$18.00

Delivery period - Immediate delivery from local stock.

THE BRANTFORD INDUSTRIAL COMMISSION

City Hall

BRANTFORD, ONTARIO, CANADA

Industrial Development Data

FINANCIAL DATA

SECTION 8

BANKS IN BRANTFORD

- The Canadian Imperial Bank of Commerce Phone: 752-5477
Dalhousie & Market Streets,
Manager: Mr. James Baikie
- The Bank of Montreal, Phone: 752-7887
57 Market Street
Manager: Mr. J. Frank Horne
- The Bank of Nova Scotia Phone: 753-2654
171 Colborne Street
Manager: Mr. E.A. Cummings
- The Royal Bank of Canada Phone: 753-4121
30-32 Market Street,
Manager: T. Ronald McCullough
- The Toronto-Dominion Bank Phone: 756-6144
108 Colborne Street
Manager: Mr. C.E. McGuire

TRUST COMPANIES IN BRANTFORD

- Canada Permanent Trust Company Phone: 759-4020
40 Market Street
Manager: Mr. T.N. Strong
- Crown Trust Company Phone: 752-4393
114 Dalhousie Street,
Manager: Mr. Ivan Startup
- Fidelity Mortgage & Savings Phone: 752-4319
28 Market Street,
Manager: Mr. D.J. Usselman

FINANCE COMPANIES IN BRANTFORD

- Associates Finance Co. Ltd. Phone: 753-8661
172 Dalhousie Street
- Beneficial Finance Co. of Canada Phone: 753-4195
163 Colborne Street
- Canadian Acceptance Corp. Ltd. Phone: 753-3111
127½ Colborne Street
- Citizens Finance Corp. Ltd. Phone: 753-2691
183 Colborne Street
- Crescent Finance Corporation Ltd. Phone: 756-6317
113 Colborne Street

THE BRANTFORD INDUSTRIAL COMMISSION

City Hall

BRANTFORD, ONTARIO, CANADA

Industrial Development Data

FINANCIAL DATA

SECTION 8

FINANCE COMPANIES IN BRANTFORD (cont'd)

Household Finance Co. of Can. Ltd.
146 Colborne Street

Phone: 752-6562

Industrial Acceptance Corp. Ltd.
233 Colborne Street

Phone: 752-3773

Niagara Finance Co. Ltd.
233 Colborne Street

Phone: 752-7863

Pacific Finance Acceptance Co. Ltd.
169 Colborne Street

Phone: 752-5426

Trader Finance Corp. Ltd.
50 Dalhousie Street

Phone: 752-3787

Trans Canada Credit Corp. Ltd.
88½ Colborne Street

Phone: 753-4185

Union Finance Co. Ltd.
21 George Street

Phone: 753-2638

COLLECTION AGENCIES

Credit Bureau
154 Dalhousie Street

Phone: 753-3483

STATISTICS

Cheques cashed in clearing centres (*)

Annual Total
1965

1.04 billion

Percent Change
65/64 64/63

12.5% 7.7%

(*) - Source - Ontario Statistical Review for 1965

THE BRANTFORD INDUSTRIAL COMMISSION

City Hall

BRANTFORD, ONTARIO, CANADA

CANADIAN NATIONAL RAILWAYS

Facilities of the Canadian National Railways in Brantford are as follows:

YARD

Storage capacity of 400 cars. The C.N.R. operates approximately ten miles of industrial trackage through the central part of Brantford.

TEAM TRACKS

Wadsworth Street - 20 car capacity
Cainsville - 10 car capacity

SCALES & RAMPS

Two loading ramps (handles Piggyback Trailers)
52' 125-ton capacity scale track
20-ton capacity truck scale
5-ton capacity platform scale in freight shed

OVERHEAD CRANES

3-ton capacity electric overhead crane in freight shed
10-ton overhead track crane located just west of the freight shed.

FREIGHT OFFICE AND SHED

Located on Wadsworth Street, the shed is capable of handling 30 merchandise cars and is equipped with $1\frac{1}{2}$ ton fork lift truck.

Yard switching is on a 24-hour day basis, Monday through Friday and an 8 hour basis Saturday and Sunday. Cars are inter-switched with the T.H.&B. and L.E.&N. daily.

PASSENGER DEPOTS

City Ticket Office - 84 Dalhousie Street Phone 753-4179
Depot Ticket Office - C.N.R. Station -
Market Street Phone 752-7821

TELEGRAPH OFFICE - 84 Dalhousie Street Phone 753-3477

EXPRESS

The Express Office is located at the west end of the Passenger Station and handle Canadian National Express and Railway Express, also Air Express and Air Cargo Shipments for T.C.A. Cartage with pick-up and delivery service is offered on Less-Than-Carload and Carload Freight handled to or from the C.N.R. Freight Shed. **THE BRANTFORD INDUSTRIAL COMMISSION**

Industrial Development Data

TRANSPORTATION

SECTION 9

THE TORONTO, HAMILTON, BUFFALO RAILWAY CO.

The T.H.&B. Railway Company serves the south side of the City entering at Cainsville on the east from Hamilton. The general offices are located in the Railway Station, Hamilton, Ontario. District offices are located in Buffalo, Pittsburgh and Port Colborne, Ontario.

YARDS

Mohawk Yard - extending east from Mohawk Street -
capacity - 150 cars
Market Street - extending east from Market Street
to Eagle Avenue - capacity - 75 cars

TEAM TRACKS

Cainsville, Market Street, West Colborne Street

SCALES AND RAMP

50 foot, 150-ton capacity track scale in Market Street Yard, 2 car ramp at Newport Street.

FREIGHT

Daily switching, 5 days per week, additional service as required.

Through manifest freight service to all connections.

PASSENGER

All services from Hamilton. Tickets, information and baggage handling arranged at Brantford Station.

EXPRESS

Railway Express Company operate over our line and provide service in and out of Brantford.

INTERCHANGE

With Lake Erie and Northern and Canadian National Railways at Brantford.

CONNECTIONS

With New York Central System at Waterford, New York Central System at Welland, Ontario and Canadian Pacific Railway at Hamilton, Ontario.

THE BRANTFORD INDUSTRIAL COMMISSION

City Hall

BRANTFORD, ONTARIO, CANADA

LAKE ERIE & NORTHERN RAILWAY

The Lake Erie and Northern Railway, a diesel-operated subsidiary of the Canadian Pacific Railway, operates between Galt and Port Dover through Brantford. At Galt, a distance of 21 miles, connection is made with the Main Line of the Canadian Pacific Railway and at Waterford, a distance of 16 miles, connection is made with the Main Line of the New York Central Railroad.

Brantford has interchange or switching facilities between all railways.

The Brantford office is located on Grand River Avenue.

TRUCK TRANSPORT SERVICES

Listed below are the names of truck transport companies serving Brantford. This information is from the 1966 edition of the Official Ontario "Ship by Truck" directory published by the Automotive Transport Association of Ontario.

Names not followed by a symbol are in Class "A" - authorizing the Licensee to conduct as a common carrier a public commercial vehicle service between places on the Queen's Highway and other places named in the license. Class "C" authorizes the licensee to transport as a common carrier only on a continuous trip from or to the place or places named in the license.

Symbols: (C) Class "C" privileges
 (T) Terminal Location
 (*) Restricted - Consult details of license

- | | | | |
|--------------------|-----|------------------|-------|
| (T) Consolidated | (C) | (T) Rees | (C) |
| Duncan | | (T) Victoria | (C) |
| Hanson | | (T) Scobie's | |
| (T) Listowel | (*) | Thibodeau | |
| (T) Noakes | (C) | Cathcart | |
| (T) Cronkwright | (C) | (T) Jones | |
| (T) Dalewood | (C) | Mitchell | (Ham) |
| Smith | | (T) Overland | |
| (T) Wright Motor | (C) | Russell | (*) |
| (T) Direct-Winters | | Maritime Ontario | |
| (T) Finch | (C) | | |
| (T) Inter-City | | | |
| McAnally | | | |

BRANTFORD MUNICIPAL AIRPORT

Located on the immediate outskirts of the City of Brantford, the Brantford Municipal Airport offers numerous advantages to business men of Brant and Norfolk Counties. In addition to being within easy driving distance to the principal centers of these Counties, it is within easy flying distance of major centres in Canada and the United States.

THE BRANT NORFOLK AERO CLUB

This club operates the Brantford Municipal Airport for the City Airport Commission and are also equipped to train pilots for private or commercial pilots licenses. The club is also equipped to give instruction in night flying as well as Link and Instrument Training. All instruction is supervised by Government Licensed Instructors.

REFUELING AND SERVICING

For industries who will find the Brantford Municipal Airport a convenience for their own company planes, they can be assured of complete refueling and servicing facilities. Esso Imperial aviation gasoline pumps are installed on the field, honouring Esso Imperial or Standard Oil Credit Cards. Qualified mechanics are available at all times for overhaul and repair services.

COMFORTABLE LOUNGE

Lounge facilities are at the disposal of members, and may be used for business conferences when time is an important consideration. A call to the Airport prior to arrival will be all that is necessary to arrange the necessary accommodation.

MODERN CAFETERIA

Noon luncheon snacks and coffee are available at the Airport cafeteria. Hours: Open all day till 4.30 p.m. Saturdays open till 5.30 p.m. -- also open Sundays.

CHARTER FLIGHTS

The Brant-Norfolk Aero Club can place at the disposal of its members (pilots and non-pilot), competent pilots and fully serviced aircraft for charter flights to fields at major centres. Arrangements for such charter flights can be made with the Airport Manager, Mr. Terry Patton.

CUSTOMS

The Brantford Municipal Airport is a Canadian Customs Port of Entry. Prior notification of arrival is required for any flight landing at Brantford from the United States.

THE BRANTFORD INDUSTRIAL COMMISSION

Industrial Development Data

TRANSPORTATION

SECTION 9

BRANTFORD MUNICIPAL AIRPORT (cont'd)

FLYING TIME TO MAJOR CENTRES

Toronto	30 minutes	Montreal	3 hrs 20 min.
Pittsburgh	2 hrs. 30 min.	Detroit	1 hr. 22 "
Chicago	3 hrs. 50 min	New York	3 hrs. 20 min.
Cleveland	2 hrs. 10 min.	North Bay/Sudbury	2 hrs. 10 min.
Muskoka	1 hr. 15 min.		

The Club recently acquired a Cessna 182 aircraft. Christened the "Miss Brantford" this plane will reduce the above flying times to the major centres because of its higher speed (150 m.p.h.)

LENGTH OF RUNWAYS

3 parallel pairs, 1-4,000'; 2-2,620' all lighted
All runways asphalt - 100' wide

RADIO COMMUNICATION - on Unicom

Weather reports available from London or Toronto
Radio Range

STATISTICS

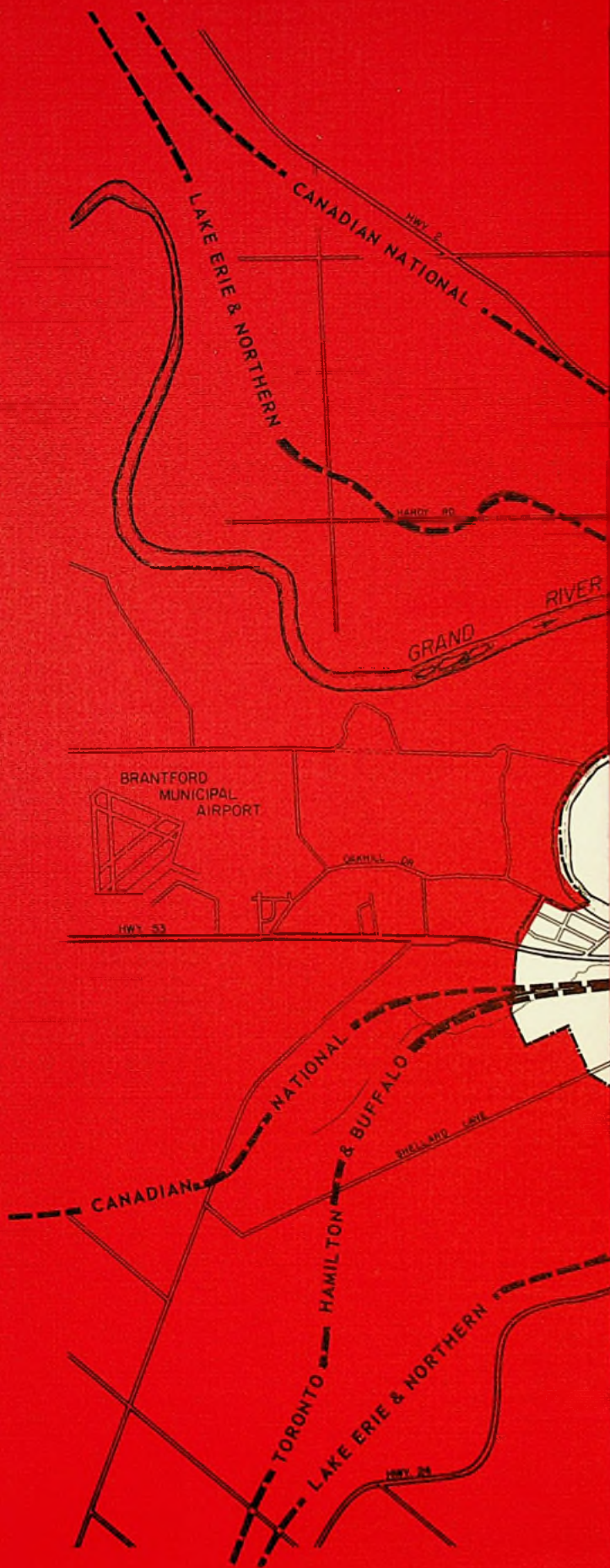
Lat. 43°08' N
Long. 80°21' W
4 miles West of Brantford
Operator: Corp. of City of Brantford
Usable all year
Lighting: flashing beacon
Runway lights on outer runways available on prior request. Lighting on 2 hr. notice to Brant-Norfolk Aero Club, phone: 753-2521 or 756-5126

Radio air ground. Call sign: VYE 85. Trans & guards, 122.8 (daylight hours)
Operator: Brant-Norfolk Aero Club
Facilities: Hangars & servicing available.
Gas 80/87, 100/130.
Oil 54, 80, 100 & 120.
Telephone at field. Taxi bus and hotels in Brantford.

THE BRANTFORD INDUSTRIAL COMMISSION

City Hall

BRANTFORD, ONTARIO, CANADA



COMMUNICATION

RAILROADS SERVING

BRANTFORD ONTARIO

- CANADIAN NATIONAL
- CANADIAN PACIFIC
- LAKE ERIE
& NORTHERN (C.P.R.)
- TORONTO, HAMILTON
& BUFFALO (C.P.R.)

PHONE — WRITE — WIRE

G. H. (GORD) ADAMS, INDUSTRIAL COMMISSIONER

CITY HALL
BRANTFORD, ONTARIO, CANADA

519 - 753-2671



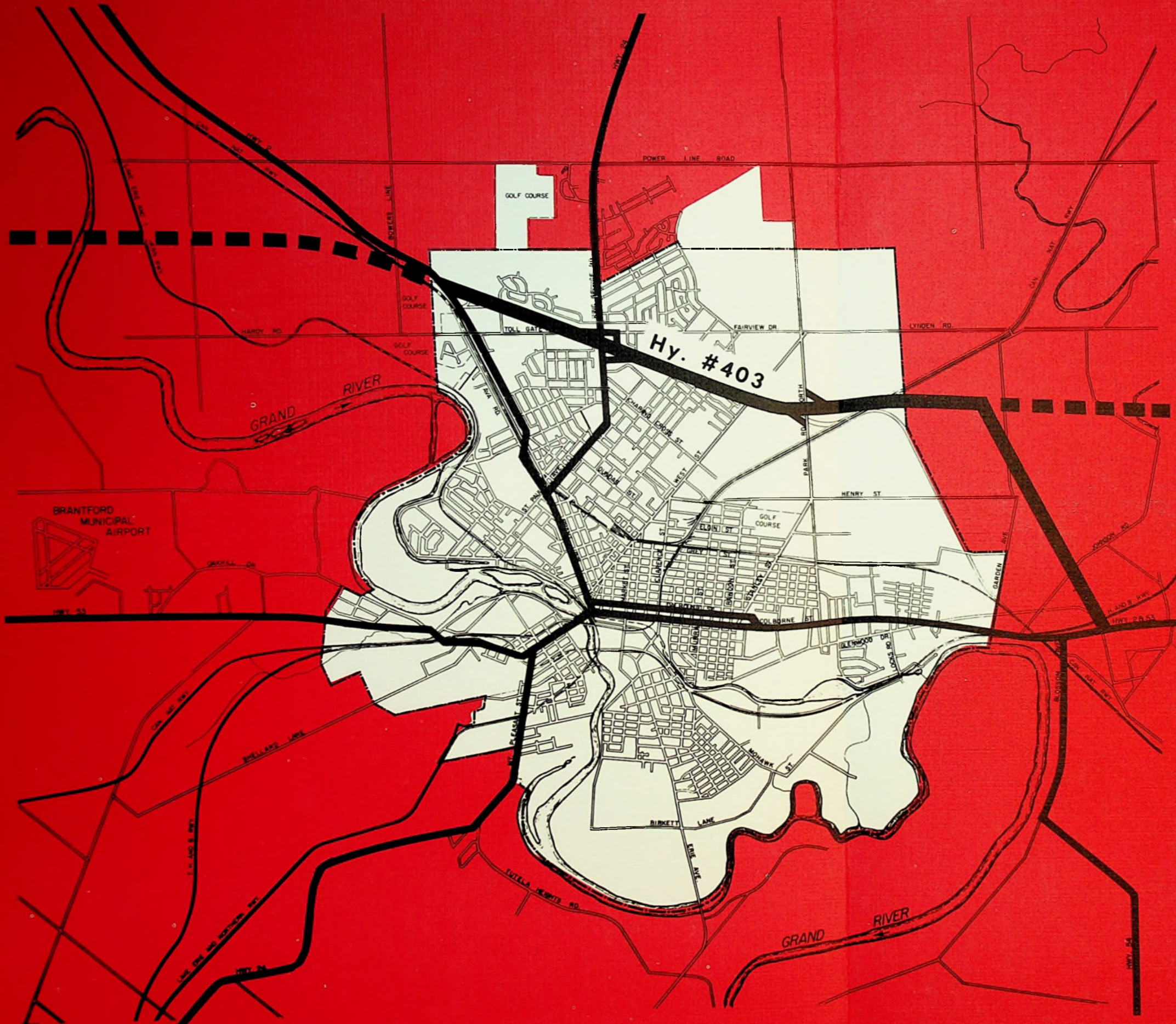
COMMUNICATION

RAILROADS SERVING

BRANTFORD ONTARIO

- CANADIAN NATIONAL
- CANADIAN PACIFIC
- LAKE ERIE
& NORTHERN (C.P.R.)
- TORONTO, HAMILTON
& BUFFALO (C.P.R.)

PHONE — WRITE — WIRE
G. H. (GORD) ADAMS, INDUSTRIAL COMMISSIONER
 CITY HALL
 BRANTFORD, ONTARIO, CANADA
 519 - 753-2671



COMMUNICATION

HIGHWAYS SERVING

BRANTFORD ONTARIO

- HY. #403
- Hy. #2
- Hy. #24
- Hy. #53
- Hy. #54

PHONE — WRITE — WIRE
G. H. (GORD) ADAMS, INDUSTRIAL COMMISSIONER
 CITY HALL
 BRANTFORD, ONTARIO, CANADA
 519 - 753-2671

Industrial Development Data

CIVIC DATA

SECTION 10

GENERAL

CHURCHES AND DENOMINATIONS

Brantford has churches of all denominations; 48 Protestant; 4 Roman Catholic; 1 Synagogue; 6 sects and the Brantford Corps of the Salvation Army.

BUSINESS AND SERVICE CLUBS

There are 33 business and service clubs in Brantford including 7 women's organizations, Advertising and Sales Club, Shriner's Club and Zonta Club.

BOARD OF TRADE

A voluntary, non-profit association of citizens organized to promote the commercial, industrial, agricultural and civic welfare of the community. A full time office and staff is maintained to provide services and information to citizens and the travelling public.

NEWSPAPER, RADIO AND T.V.

The Brantford Expositor serves Brantford and area with a daily newspaper. Five representatives of metropolitan dailies reside in the city. Radio station C.K.P.C., 10,000 watts, gives local coverage and is affiliated with the Canadian Broadcasting Corporation. Two television stations serving the area.

HOTELS AND MOTELS

Graham Bell Hotel - 36 rooms	753-3431
Hotel Kerby - 80 rooms	752-5481
Alexander Motor Hotel - 30 units	753-2523
Bell City Motel - 23 units	756-5236
Four Star Motel - 21 units	753-8424
Grant Motel - 24 units	753-8451
Jolly Baron Inn - 40 units	753-7371
Mohawk Motel Ltd. - 23 units	753-8621
Plaza Motel - 13 units	753-5553
Sherwood Inn Motel - 24 units	756-5261
Sunset Motel - 10 units	753-2631
Twin Gates Motel - 13 units	752-6554

LIBRARY

The Brantford Public Library offers a wide range of books (90,000 volumes), long playing records, films; children's library, "shut-in" service and a continuing art display.

THE BRANTFORD INDUSTRIAL COMMISSION

City Hall

BRANTFORD, ONTARIO, CANADA

Industrial Development Data

CIVIC DATA

SECTION 10

HOUSING

During the year 1966, Brantford experienced a boom in house and apartment building. Records show that in 1966 there were 228 single family; 4 duplexes; 17 fourplexes; 2 triplexes; 1 sixplex and 1 apartment building constructed in the City. To indicate our growth, we have listed sections of the City of Brantford's Building Classification for the years 1964 and 1965.

BUILDING CLASSIFICATION

	1965	1966
Single dwelling homes occupied by owners	10,992	11,182
Single dwelling homes occupied by tenants	1,758	1,817
Single dwelling homes vacant	99	124
TOTAL NUMBER OF SINGLE DWELLING UNITS	12,849	13,123
Duplexes	1,121	1,146
Triplexes	105	125
Fourplexes and Sixplexes	88	105
Apartment houses	45	50
TOTAL NUMBER OF RESIDENTIAL BUILDINGS	14,208	14,549
Number of apartments in apartment houses	784	866
Number of apartments over stores	356	320
TOTAL DWELLING UNITS	16,924	17,424
Population per dwelling unit	3.44	3.39

Total capital invested in all residential properties for the year 1966 was \$6,038,000, an increase of approximately \$700,000 over the year 1965.

Currently, we have three interesting housing developments taking place.

BRIER PARK: A long range residential and commercial development of 450 acres in the north of Brantford, planned to include 1420 single family homes, 400 town houses, and a number of high rise apartments is well under way. These units are expected to provide accommodation for upwards of 8,000 persons in the next decade.

ORCHARD PARK: Construction has not begun on a new 60 acre housing subdivision in Brantford's east end with provision for 172 single family homes, 17 fourplexes and 10 high rise apartments.

NORTHRIDGE PARK: The most recent of the three subdivisions, it is located in the north-west section of the city. This subdivision has made provision for 232 single family homes, 16 two plexes and fourplexes and 50 town houses.

THE BRANTFORD INDUSTRIAL COMMISSION

City Hall

BRANTFORD, ONTARIO, CANADA

Industrial Development Data

CIVIC DATA

SECTION 10

EDUCATION

PUBLIC ELEMENTARY SCHOOLS

The City of Brantford has 28 public elementary schools as of August, 1967 with a total of 304 classrooms. The staff comprises 330 teachers. In addition to the regular grade teachers, there are special teachers in charge of physical education, music, speech correction, audio visual, home visiting, guidance and remedial reading. There are ten Opportunity classes for slow learners, four major work classes for gifted children and four centres for Home Economics and Industrial Arts and Crafts which the children of Grades 7 and 8 attend. In addition, schools are being reorganized and 6 senior schools are now in operation.

SECONDARY SCHOOLS

Public secondary education in Brantford is provided in four schools:

The Brantford Collegiate Institute and Vocational School
The North Park Collegiate Vocational School
The Pauline Johnson Collegiate Vocational School and
The Herman E. Fawcett Secondary School.

These schools also provide secondary school accommodation for the surrounding township area, which purchases its secondary school education from the Brantford Board of Education. Vocational education is also made available to students of the surrounding communities where vocational facilities are not available.

Three schools are completely composite and provide education at the secondary school level in the three branches of the re-organized program of studies. These branches prepare the students for post-high school education and for Commercial and Technical positions in business and industry. A special vocational school known as the Herman E. Fawcett Vocational School, planned to accommodate 600 pupils, opened in January of 1967.

The four schools, when operating at full capacity, will accommodate a total of 5,170 pupils.

THE BRANTFORD INDUSTRIAL COMMISSION

City Hall

BRANTFORD, ONTARIO, CANADA

Industrial Development Data

CIVIC DATA

SECTION 10

EDUCATION (Cont'd)

GRADUATING CLASSES ENROLLMENT STATISTICS 1966/67

SUBJECT	<u>B*</u>	<u>N*</u>	<u>P*</u>	<u>H*</u>
Grade 13 Arts & Sciences	109	108	116	---
Grade 12 Arts & Sciences (5 year)	99	104	26	---
5 year Business & Commerce	14	33	49	---
5 year Science, Technology & Trades	22	35	45	---
4 year Business & Commerce (includes Special Commercial)	91	34	49	---
4 year Science, Technology & Trades	51	23	45	---
2 year Business & Commerce	19	--	26	---
2 year Science, Technology & Trades	20	--	14	---
Occupations - Male				52
Female				29
TOTALS	425	337	370	81

NOTE: B* - Brantford Collegiate
 N* - North Park Collegiate
 P* - Pauline Johnson Collegiate
 H* - Herman Fawcett Secondary School

Separate schools not included.

EVENING CLASSES AND ADULT EDUCATION

In addition to the regular day classes, evening classes are offered in advanced academic and technical subjects, commercial work, home economics, industrial subjects and special subjects such as art, English for New Canadians and Conversational French.

Industrial Development Data

CIVIC DATA

SECTION 10

EDUCATION

EVENING CLASSES AND ADULT EDUCATION-- (cont'd)

Having in mind the commercial and industrial nature of the City, the Board of Education and the Advisory-Vocational Committee have been interested in developing vocational education in accordance with modern practices, so that the graduates of the vocational courses might make satisfactory adjustments in business and industry.

MANPOWER RETRAINING

In co-operation with the Manpower Retraining Department of the Ontario Department of Education, the Brantford Board of Education operates an Adult Retraining Program and an Adult Counselling Service.

The Counselling service is available to all post secondary school persons for advice on further education and training opportunities.

The Manpower Retraining Program provides upgrading and retraining classes for unemployed persons. It also arranges for up-dating courses in co-operation with industry.

THE BRANTFORD SEPARATE SCHOOL BOARD

The Brantford Separate School Board has under its jurisdiction 10 elementary schools with grades from kindergarten to grade 8. The Board also has property located in the northern extremity of the city and will be building there when required. The total enrollment in the separate schools is approximately 2,450 students.

The Elementary Separate Schools come under the jurisdiction of the Department of Education for the Province of Ontario and has a resident school inspector with an office at 318 Dalhousie Street.

On the secondary school level there are two schools known as Providence College and St. John's College. St. John's is operated by the Fathers of the Resurrection and at present has an enrollment of 290 all male students. This school is modernly equipped including a gymnasium - auditorium. Offered is a general

....cont'd..

Industrial Development Data

CIVIC DATA

SECTION 10

EDUCATION

THE BRANTFORD SEPARATE SCHOOL BOARD (cont'd)

course including the commercial option under the Department of Education of the Province of Ontario. The Providence College, an all girl college, is operated by the Sisters of Providence. This college has an enrollment in grades 9 to 12 inclusive of approximately 250 students. The grade 13 students receive their education at St. John's College. For information respecting enrollment in the elementary schools under the auspices of the Brantford Separate School Board, please contact Mr. George Baskett, Business Administrator, 96 Grand River Avenue, telephone number 756-6369.

BRANTFORD BUSINESS COLLEGE

The Brantford Business College at the present time offers three courses for either men or women. They are:

- (1) The Secretarial Course for students who do not have high school graduation. This is planned for completion in ten months.
- (2) The Senior Secretarial Course for high school graduates only. The length of time required is eleven months.
- (3) The Speedwriting Stenography Course, which is a 7 month course.

In all of these courses, 20 hours are set aside for training in personality development and good grooming.

Diplomas for the above-named courses are awarded to the successful candidates by the Business Educators' Association of Canada.

MUNICIPAL PARKS & RECREATION SERVICES

GENERAL

Public recreation services are administered co-operatively by the Parks Board and the Recreation Commission. There are 61 park areas comprising 704 acres of land. These areas are designed to provide a reasonable balance between active recreation areas and ornamental and rest areas. Over 250 acres of additional lands have been acquired for future development.

THE BRANTFORD INDUSTRIAL COMMISSION

City Hall

BRANTFORD, ONTARIO, CANADA

MUNICIPAL PARKS & RECREATION SERVICES

GENERAL (cont'd)

Public school grounds are used as public parks after school hours; permits are issued by the Recreation Commission in the same way as for public parks. The school buildings are rented directly by the Board of Education or through the Recreation Commission, depending on the use. There are special rates for non-profit recreation uses.

MAJOR RECREATIONAL FACILITIES AND PROGRAM HIGHLIGHTS

BRANTFORD AND DISTRICT CIVIC CENTRE

A new 3,000 seat arena and 500 seat auditorium was completed in March, 1967. This facility provides an attractive setting for Brantford's major spectator events and large community activities of all kinds.

GLENHYRST GARDENS

A beautifully landscaped former private estate now the home of Glenhyrst Arts Council - the cultural centre of the district. Activities include an annual arts ball, an antique show, a pantomime, classes in art, ballet and french and a Public Gallery.

GOLF COURSES

Brantford has four excellent golf courses. Two of these are 18 holes and two 9 holes.

MOHAWK PARK

A 45 acre, wooded park with trailer, tenting and picnic facilities, a wading pool, miniature golf course, 440 yard cinder track and football-soccer field. Home of Brantford's Annual Highland Games and the Brantford Track and Field Club.

NORTH PARK ARENA

A new artificial ice arena for minor sports, figure skating and other community activities.

LIONS PARK RECREATION CENTRE

Contains two outdoor artificial ice rinks, a floodlit football-soccer field, a floodlit softball diamond and Earl Haig Pool - an olympic size outdoor swimming pool - one of the largest in Ontario.

MUNICIPAL PARKS & RECREATION SERVICES

GENERAL (cont'd)

The following facilities are offered in this system:

- 16 ornamental and rest areas (one of these is Glenhyrst Gardens which includes gardens, arboretum and an arts centre).
- 32 supervised playgrounds
- 28 natural, 2 outdoor artificial ice rinks and 1 artificial ice arena
- 8 wading pools and 2 swimming pools
- 1 new Civic Centre Arena - Auditorium
- 2 floodlit ball diamonds; 7 football-soccer fields (one floodlit)
- 2 running tracks
- 1 - 45 acre picnic and camping area (Mohawk Park)
- 1 - 200 acre picnic and camping area (Woodland (Waterworks) Park)
- 17 hardball diamonds and 23 soft ball diamonds
- 2 municipal golf courses (18 holes, 9 holes) plus 2 privately owned golf courses.

A staff of 135 recreation leaders conduct the summer program of the Recreation Commission and a staff of 50 conduct the winter program. The Recreation Commission offers a variety of activities for people of all ages and interests, and can guide you to participation in the following activities and many more: Arts & Crafts; Hiking and Touring; Bands; Camping; Choirs and Choruses; Community Committees; Dancing; Discussion Groups; Night School; Picnicing; Playgrounds; Riding; Senior Citizens; Sports of all kinds; Symphony Orchestra; Drama.

Classes of instruction are given by trained leaders of the Recreation Commission in swimming, diving, drama, track and field, tennis, hockey, skating, figure skating, skiing and gymnastics.

MUNICIPAL PARKS & RECREATION SERVICES (cont'd)

YOUTH - MUSIC - SENIOR CITIZENS

The highlights of the Brantford recreation programs have to be the wide variety of youth activities, the interest in music with the Brantford Symphony Orchestra, the Brantford Memorial Concert Band and the St. Johns, Knights of Columbus Drum and Bugle Corps providing top entertainment and a senior citizens program second to none in Canada.

TOTAL EMPLOYMENT IN BRANTFORD COUNTY AREA

Manufacturing	13,438
Construction & Transportation	1,500
Service Occupations	5,800
Business & Commerce	2,100

Based on reports of employers as of 1960
 Source: Department of Labour, Semi-annual Reports
 February, 1962

LABOUR SUPPLY

This is interpreted as persons available for work, not the
 breakdown of employed workers.

As of October, 1960, 1960 replaced employees registered with
 the Central Manpower Centre numbered 1,611, falling into the
 following broad occupational classes:

Professional occupations	100
Administrative occupations	100
Technical occupations	100
Skilled occupations	100
Semi-skilled occupations	100
Unskilled occupations	100
Unemployed	100
Total	1,611

Industrial Development Data

LABOUR

SECTION 11

TOTAL EMPLOYMENT IN BRANTFORD

Employees in Manufacturing		14,492
Durable goods	8,192	
Non Durable goods	6,300	
 Industrial composite		 19,300

Source: D.B.S. Employment and Average Weekly Wages and Salaries, July, 1967.

These figures are based on reports from employers of 20 or more employees.

TOTAL EMPLOYMENT IN BRANT COUNTY AREA

Manufacturing	16,428	
Construction & Transportation	1,206	
Service Occupation	2,894	
Business & Commerce	3,199	
 TOTAL		 23,727

Source: Department of Labour: Semi-annual Report, February, 1966.

Based on reports of employers of 10 or more employees.

LABOUR SUPPLY

This is interpreted as persons available for work, not the break-down of employed workers.

As of October, 1966, unplaced applicants registered with the Canada Manpower Centre numbered 1,689, falling into the following broad occupational classes.

<u>MALE</u>	<u>SKILLED & SEMI-SKILLED</u>	<u>FEMALE</u>
8	Professional & Managerial	6
40	Office & Clerical	302
25	Sales and Kindred	81
100	Manufacturing occupations	46
13	Construction occupations	--
22	Transportation occupations	--
<u>60</u>	Miscellaneous occupations	<u>19</u>
 268	 Sub-total skilled and semi-skilled	 454

THE BRANTFORD INDUSTRIAL COMMISSION

City Hall

BRANTFORD, ONTARIO, CANADA

Industrial Development Data

LABOUR

SECTION 11

LABOUR SUPPLY (cont'd)

<u>MALE</u>	<u>UNSKILLED OCCUPATIONS</u>	<u>FEMALE</u>
12	Food & Tobacco Occupations	34
47	Textile Occupations	25
5	Electrical Occupations	49
168	Metal Working Occupations	--
30	Construction Occupations	--
10	Miscellaneous Mfg. Occupations	39
164	Miscellaneous Serv. Occupations	70
<u>68</u>	Miscellaneous Unskilled Occupations	<u>246</u>
504		463
ADD:		
<u>268</u>	Sub-Total Skilled & Semi-Skilled	<u>454</u>
<u>772</u>	GRAND TOTAL	<u>917</u>

AREA AND DISTANCE INVOLVED

The majority of Brantford employees live either in the City of Brantford or the immediately adjacent areas throughout the county, including the Town of Paris and the Villages of Burford and St. George, which lie about 7 to 9 miles from the centre of Brantford. There is also some commuting to employment in Brantford from those areas of Norfolk, Wentworth and Oxford counties, lying just outside the Brant County lines. The furthest point in the county is about 18-20 miles from the City.

LABOUR DISTURBANCES

The record of the Post-war years with regard to labour disputes is most reassuring. Since August, 1963, 16 work stoppages are listed, involving 13 firms, excluding the railway and truck/transport strikes which were not local in nature. Duration ranged from 1 day with 204 employees to 138 days involving 7 employees. Ten stoppages were of 5 days' duration or less and a further three lasted from 5 to 10 days. Recognizing that Brantford area is highly industrialized and that a large portion of that industry is covered by collective agreements, it is obvious that the majority of union contracts have been successfully negotiated without recourse to work stoppage.

LABOUR

SECTION 11

LABOUR TURNOVER

This factor varies considerably in different types of industry, but the overall ratio is considered not excessive. For example, a fair-sized heavy industry with a total hourly-rated work force of 800-900 lists.

205 employees with 25 or more years of service
330 employees with 15 or more years of service
25 employees with 10 or more years of service
25 employees with 5 or more years of service
60 employees with 1 or more year of service.

In other words, over 50% of the workers have 15 or more years of service.

WORKING HOURS AND STATUTORY HOLIDAYS

Most industrial plants work a 40-hour week on a variety of 1, 2 and 3 shift schedules.

Statutory Holidays are commonly recognized as

New Years Day
Good Friday
Victoria Day
Dominion Day
Civic Holiday
Labour Day
Thanksgiving
Christmas.

In addition, Easter Monday and Remembrance Day are recognized as legal, though not public, holidays. Many collective agreements list 8 to 10 as paid holidays.

TRAINING FACILITIES AND EDUCATION

While industrial apprenticeship has suffered a rather serious decline in the last 10-15 years, training plans are again receiving more attention recently. These include.

- (a) Adult Education - Evening Classes - operated by the Brantford Board of Education, include academic, vocational and advanced technical courses in addition to cultural and interest classes.

TRAINING FACILITIES AND EDUCATION (cont'd)

- (b) Training for Unemployed - includes two phases -
1. Classes conducted by Board of Education in Basic Upgrading (Academic), Commercial, Commercial Art, Electronics Servicing, Welding, Machine Operating, Small Engine Servicing and Power Sewing Machine Operating. Most of these are of 10 months duration.
 2. On-the-Job-Training in programs approved by the Ontario Department of Labour and conducted by industries themselves. Training includes power sewing machine operating, foundry operations, machine and assembly work.
- (c) In-service Training of employed workers under Program "4" carried on by industry but approved and assisted by Federal Provincial grants.

Industrial Development Data

INDUSTRIAL DEVELOPMENT

SECTION 12

INDUSTRIAL DEVELOPMENT IN BRANTFORD & VICINITY

<u>YEAR</u>	<u>NEW INDUSTRIES</u>
1961	2
1962	2
1963	1
1964	10
1965	15
1966	5
TOTAL	<u>35</u>

The 35 industries establishing in this area during the period 1961-1966 occupy some 1,400,000 square feet and represent a capital investment of 20 million dollars. During the same period, established industry in the area expanded by some 750,000 square feet for a capital investment of 14½ million dollars.

The impetus to this phenomenal development is greatly due to municipal and utility co-operation and initiative in providing all necessary services as required.

INDUSTRIAL LANDS AVAILABLE

BRANEIDA (Brantford's North-Eastern Industrial Development Area) embracing some 1,000 acres of industrially zoned land is now approximately 50% occupied by industrial enterprises. Of the balance of the area some 350 acres are now fully serviced and ready for immediate occupancy and development.

In order that there be no misunderstanding of the term "fully serviced" we mean that the following are provided:

- Storm Sewer
- Sanitary Sewer
- Municipal water
- Natural Gas
- Hydro
- Rail (if required)
- Pavement
- Curb & Gutter
- Street Lights

Please enquire about our all-inclusive industrial land price.

THE BRANTFORD INDUSTRIAL COMMISSION

City Hall

BRANTFORD, ONTARIO, CANADA





3 9154 00167372 2

antford - Industria