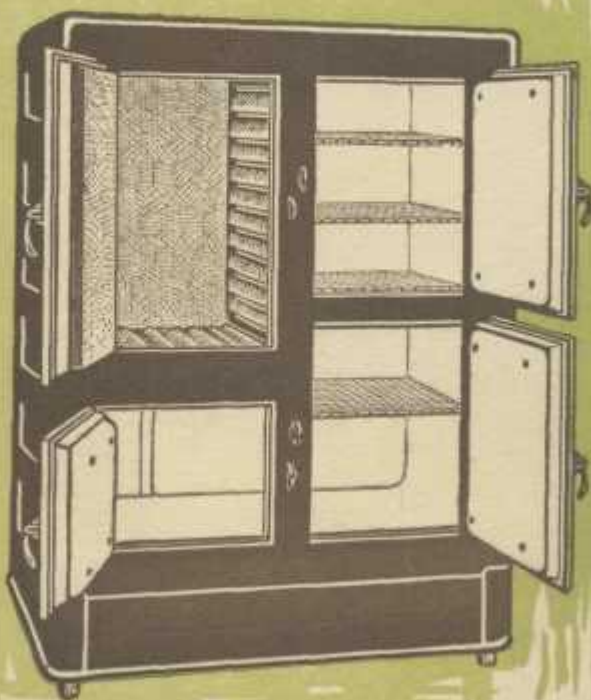


# *Ham Brothers*

COMPANY  
LIMITED

**BRANTFORD, CANADA.**



**REFRIGERATORS  
SCREEN DOORS &  
WINDOW SCREENS**

JOHN T. HAM, PRESIDENT

JOSEPH H. HAM, VICE-PRES.

J. W. SHEPPESON, SEC.-TREAS.

# Ham Brothers Company Limited



REFRIGERATORS  
SCREEN DOORS  
WINDOW SCREENS

STORM DOORS  
COMBINATION DOORS  
WINDOW VENTILATORS

Brantford, Canada

ILLUSTRATED CATALOGUE

OF

*Brantford*

# *Refrigerators*

Screen Doors and  
Window Screens

Catalogue  
No. 21

HAM BROTHERS CO.  
LIMITED

Brantford, Canada



## GREETINGS



OR nearly thirty years we have been telling you about the quality of our product. During that time others have come and gone, but, like the poet's brook, we go on forever. This fact proves conclusively one of many things, that our success and the popularity of our product is not simply based on "printer's-ink" quality, but on the genuine article. The trade throughout the Dominion, much of which has dealt with us during all the time we have been in business, knows that never have we made a claim for our goods that has not been absolutely correct. That is the reason we now have the largest Refrigerator factory and the largest Screen Door factory under the British Flag, and make more of these articles each year than all other Canadian manufacturers combined. This is the reason our business is to-day ten times as large as it was fifteen years ago. Quality and Progress have been running mates with us.

For nearly thirty years we have been building Brantford Refrigerators, and during this long, successful period we have never cheapened our product at the expense of quality. We can show you Brantford Refrigerators that have been in continuous use for a great many years which are still in actual service and in good condition.

We have examined various Refrigerators for which special advantages have been claimed. We have tested our Refrigerators side by side with practically every other make, and say frankly that, as a scientific, sanitary Refrigerator—one at once efficient and economical—there is nothing made superior and very few equal to our own. We guarantee our Refrigerators to do anything any other Refrigerators will do under similar conditions.

What more need we say; a large proportion of the readers of this know our goods almost as well as we know them ourselves, and also know the reliability of this institution. It has never been our policy to squander large sums of money in advertising and demonstrating campaigns, we never needed to, the quality of our goods and their reasonable price having brought us to the position of the premier makers of these goods in the British Empire.

Look through this book, note the new lines of seamless One-piece Porcelain Lined Refrigerators, note the big range of other high-class, medium and low-priced Refrigerators; also observe the new designs of Screen Doors, etc.

Thank you for the business of the past. We continue to strive to merit a continuance of same.

Yours very truly,  
HAM BROTHERS COMPANY, LIMITED,  
Brantford, Canada.



1892

Factories and Warehouses of Ham Brothers Co., Limited, Brantford, Canada



Present Plant



### The Lining

#### Seamless One-Piece Porcelain Lining

The most sanitary refrigerator lining ever made. Not a crack or a crevice for germs to hide in. As easy to clean as a china dish. Will not chip or break.



### The Insulation

The cut below shows the wall construction of Brantford Refrigerators. Air cannot get through these walls.

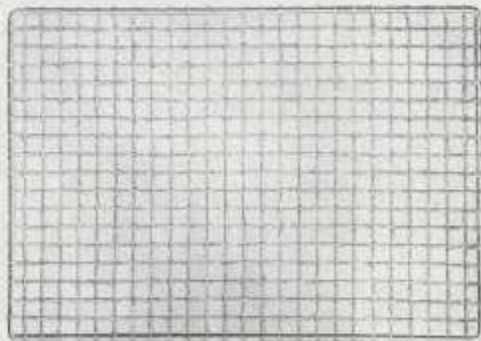


#### Ice Rack

The above cut shows Metal Ice Rack used in all our Refrigerators. The most durable on the market.



#### Automatic Metal Syphon Trap



#### The Provision Shelf

The above cut shows our plaited wire re-tinned Provision Shelves used in all Brantford Refrigerators except Nos. 1, 2 and 4 Galvanized Lined.



## TO THE DEALER AND SALESMAN:

Refrigerators are subjected to all kinds of use—many times abuse. If you wish to ensure satisfactory results and obviate complaints, post your customers when selling or delivering such goods, as to their proper use and treatment.

### Rules to Observe for Perfect Preservative Results and Economy of Ice

See that the two removable flues and the removable waste pipe are in place. See that the trap is on end of drip pipe, and stand the refrigerator level, in a cool, dry location.

Before introducing food, air well interior by opening doors and lid, then fill chamber with ice, and, allow to stand unused several hours, opening doors for a few minutes several times during interval.

Furnish ice liberally and regularly when the refrigerator is in use.

Leave doors and lid open when without ice.

Clean provision and ice chambers regularly at least once a week. To remove flues for cleaning, simply raise them up and take out of place. Remove and cleanse ice rack, and also see that the drip pipe and trap are clear.

To purify the interior of a refrigerator that has become odorous from neglect of help, or other local cause, the following mediums may be suggested:

Rub the wall with a damp cloth, moistened with warm soda water, or with water in which two tablespoons of sweet nitre to the pint has been put.

Place in the storage chamber a saucer of charcoal, renewing or sunning it occasionally.

### Don'ts

Don't put in hot, steaming, or over-ripe food or fruits.

Don't cover the shelves with paper or cloth and obstruct circulation, which has equally as much to do with preservative results as a low temperature.

Don't leave the doors open or ajar, while carrying articles to or from the refrigerator, or while chipping off ice for domestic purposes. Better keep a small box for that purpose, and not rob the refrigerator, charging it all to ice consumption, and letting in warm air.

Don't starve the refrigerator. If its ice capacity is 75 or 100 lbs., don't expect it to run perfectly with 10 or 15 lbs., supplied irregularly.

Don't put it in a cellar, laundry or other damp place, or on a porch exposed to sleet and atmospheric changes. It is made of kiln-dried lumber, and not guaranteed unless properly used.

Don't cover the ice with cloth, newspaper or other material to save ice, the function of which is to cool the refrigerator and create a circulation. Such a course may "save ice beautifully," but if you bottle up the cold air it cannot do its work and your food will spoil. If you use newspaper you must expect the "sickly odor of printer's ink" and decaying paper, and the waste water outlet to become blocked.

Don't ignore these common-sense rules, and complain because the refrigerator smells musty, the drip pipe or trap becomes choked up and water overflows into provision room, or doors swell and joints open because the dry (not green) stock has absorbed moisture. The user can avoid the cause of these troubles, but the manufacturer cannot.



OUR Quality Porcelain-Lined Refrigerators have for many years been recognized as the "Refrigerator De Lux" of the Refrigerator World. At first these Refrigerators were lined with separate sheets of porcelain, one sheet for the bottom, another for the back, others for the sides and so on, fastened to the inside case with screws and closed up the joints with cement. This made a fairly good job, but "fairly good" did not satisfy us and later we introduced what was known as our one-piece pan-bottom porcelain lining. This was composed of a solid one-piece bottom with a flare up sides and back 3 inches, the back and side sheets of porcelain fitting neatly over the flare. This lining had rounded corners and was a big improvement over the old method. Once more science and invention have enabled us to advance and we now have a provision chamber lining composed of one seamless piece of porcelain covering bottom, back, sides and top without a joint or crevice to permit of the accumulation of dirt or moisture and having round corners, is as easily cleaned as a porcelain cup.

Do not confuse this high-grade lining with some other so-called "One-piece" porcelain linings, many of which are nothing more than white enamel on light weight metal sheets, either air dried or kiln dried on. Our seamless One-piece Porcelain linings are genuine porcelain fused into the surface of heavy 16 gauge steel sheets and are, therefore, not only water-tight and easily cleaned but indestructible and will not chip, crack or flake off.

In addition to this improved provision chamber lining these Refrigerators of the side-ice-chamber type are equipped with our celebrated syphon-system partition between ice chamber and provision chamber, the system which has made such an enviable reputation for our high-grade Refrigerators for so many years.

**Other Features in a Nut Shell**

Case of Refrigerator a beautiful piece of cabinet work, made of best Northern Ash; heavy rounded corners, no cornice or mouldings or projections of any kind, thus presenting the neatest possible appearance. Filled and coated with special material and finished with coach varnish. Finished golden color.

Insulated with mineral wool, ten walls, the most scientific and sanitary system of insulation known.

Solid brass nickel plated locks and hinges. The locks are all fitted with keys and have spring attachment which enables doors to be closed without touching lock with the hands.

Ice-chamber lined with heavy galvanized sheet steel. All-metal ice-rack.

Provision shelves made of woven wire, coated with pure tin.

Shelves, ice-rack, waste pipe all removable for cleaning. Waste pipe fitted with our own automatic syphon-trap which cleans itself. Self-retaining casters.



**Seamless One-Piece Porcelain Lined Syphon System**



**Style Nos. 550 and 560**

Outside Measurements					
	Width	Depth	Height	Weight About	Price
No. 550	33 1/4	20 3/4	46	250	
No. 560	35 3/4	21 3/4	49	300	

*For Detailed Description, See Page Six.*



**Seamless One-Piece Porcelain Lined  
Syphon System**



**Style Nos. 570 and 580**

**Outside Measurements**

	Width	Depth	Height	Weight About	Price
No. 570 .....	37 $\frac{3}{4}$	22 $\frac{3}{4}$	52	350	
No. 580 .....	39 $\frac{3}{4}$	23 $\frac{3}{4}$	55	400	

*For Detailed Description, See Page Six.*



**Seamless One-Piece Porcelain Lined**



**Style No. 59**

**Outside Measurements**

	Width	Depth	Height	Weight About	Price
No. 59 .....	25 $\frac{1}{4}$	21 $\frac{3}{4}$	54	200	

*For Detailed Description, See Page Six.*



**Seamless One-Piece Porcelain Lined**



**Style Nos. 511 and 513**

**Outside Measurements**

	Width	Depth	Height	Weight About	Price
No. 511 .....	27¼	22¾	58	250	
No. 513 .....	29 ¼	23¾	61	270	

*For Detailed Description, See Page Six.*



**Style Nos. 33 and 35 White Enamel Lined**

Ash case, golden oak finish, a handsome cabinet with heavy rounded corners, plain panels, swinging base. Insulated with mineral wool, eight walls. Provision chamber white enamel lined. Wire shelves coated with pure tin; these shelves are adjustable and can be placed from 1½ inches apart to any distance to suit articles to be placed in provision chamber. Ice chamber lined with heavy galvanized steel, all-metal ice rack. Ice rack, shelves and drain pipe are all removable for cleaning. Locks and hinges are solid brass castings, perfectly smooth, highly polished, Roman gold finish. Automatic syphon-trap, self-retaining casters.

**Outside Measurements**

	Width	Depth	Height	Weight About	Price
No. 33 .....	26½	20	46	160	
No. 35 .....	29½	21	46	170	



**Style No. 37 White Enamel Lined**

Ash case, golden oak finish, a handsome cabinet with heavy rounded corners, plain panels, swinging base. Insulated with mineral wool, eight walls. Provision chamber white enamel lined. Wire shelves coated with pure tin; these shelves are adjustable and can be placed from 1½ inches apart to any distance to suit articles to be placed in provision chamber. Ice chamber lined with heavy galvanized steel, all-metal ice rack. Ice rack, shelves and drain pipe are all removable for cleaning. Locks and hinges are solid brass castings, perfectly smooth, highly polished, Roman gold finish, Automatic syphon-trap, self-retaining casters.

**Outside Measurements**

	Width	Depth	Height	Weight About	Price
No. 37 .....	33¼	21	46	200	



**Style No. 39 White Enamel Lined**

Ash case, golden oak finish, a handsome cabinet with heavy rounded corners, plain panels, swinging base. Insulated with mineral wool, eight walls. Provision chamber white enamel lined. Wire shelves coated with pure tin; these shelves are adjustable and can be placed from 1½ inches apart to any distance to suit articles to be placed in provision chamber. Ice chamber lined with heavy galvanized steel, all-metal ice rack. Ice rack, shelves and drain pipe are all removable for cleaning. Locks and hinges are solid brass castings, perfectly smooth, highly polished, nickel plated, Automatic syphon-trap, self-retaining casters.

**Outside Measurements**

	Width	Depth	Height	Weight About	Price
No. 39 .....	25¼	21¾	54	170	



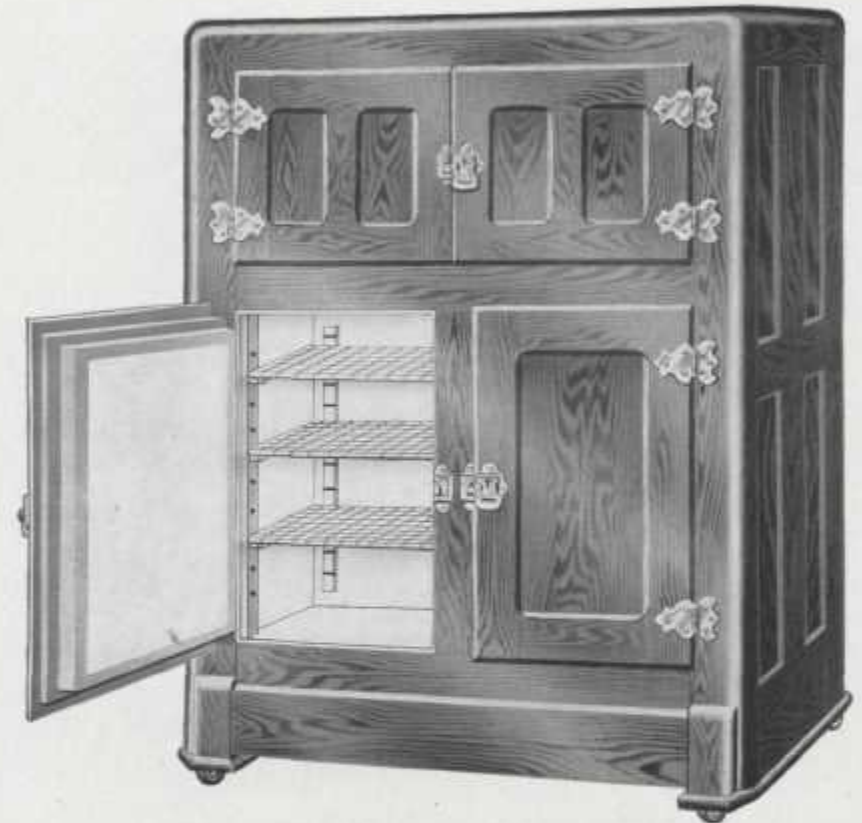


**Style Nos. 311 and 313 White Enamel Lined**

Ash case, golden oak finish, a handsome cabinet with heavy rounded corners, plain panels, swinging base. Insulated with mineral wool, eight walls. Provision chamber white enamel lined. Wire shelves coated with pure tin; these shelves are adjustable and can be placed from 1½ inches apart to any distance to suit articles to be placed in provision chamber. Ice chamber lined with heavy galvanized steel, all-metal ice rack. Ice rack, shelves and drain pipe are all removable for cleaning. Locks and hinges are solid brass castings, perfectly smooth, highly polished, nickel plated, Automatic syphon-trap, self-retaining casters.

**Outside Measurements**

	Width	Depth	Height	Weight About	Price
No. 311 .....	27¼	22¾	58	200	
No. 313 .....	29¼	23¾	61	230	



**Style No. 320 White Enamel Lined**

Ash case, golden oak finish, a handsome cabinet with heavy rounded corners, plain panels, swinging base. Insulated with mineral wool, eight walls. Provision chamber white enamel lined. Wire shelves coated with pure tin; these shelves are adjustable and can be placed from 1½ inches apart to any distance to suit articles to be placed in provision chamber. Ice chamber lined with heavy galvanized steel, all-metal ice rack. Ice rack, shelves and drain pipe are all removable for cleaning. Locks and hinges are solid brass castings, perfectly smooth, highly polished, Roman gold finish. Automatic syphon-trap, self-retaining casters.

**Outside Measurements**

	Width	Depth	Height	Weight About	Price
No. 320 .....	1 ½	24	57	300	



**Style Nos. 319 and 321 White Enamel Lined**

Solid ash case, rounded corners, plain panels, swinging base. Insulated with double dead air space and cerite, with extra mineral wool pad around ice chamber; a perfect sanitary insulation. Provision chamber white enamel lined and fitted with retinned wire shelves. Ice chamber lined with heavy galvanized sheet steel, with all-metal ice rack. Removable waste-pipe and automatic syphon trap. Roman gold lever locks and hinges to match.

**Outside Measurements**

	<i>Width</i>	<i>Depth</i>	<i>Height</i>	<i>Weight About</i>	<i>Price</i>
No. 319 .....	33¾	20½	45	180	
No. 321 .....	35¾	21½	48	200	

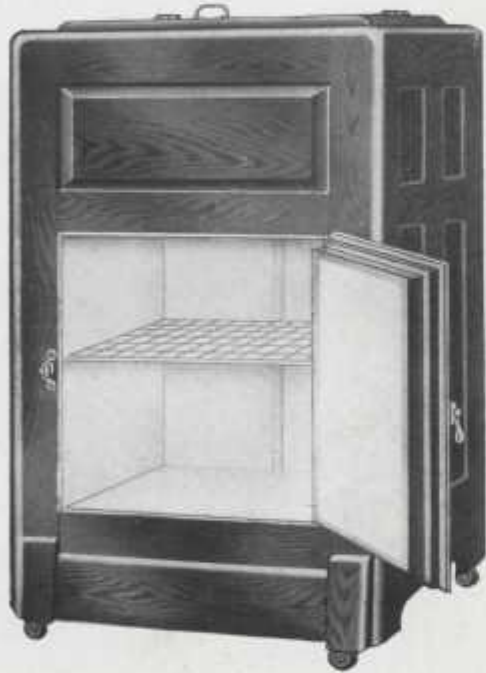


**Style Nos. 322 and 323 White Enamel Lined**

Solid ash case, rounded corners, plain panels, swinging base. Insulated with double dead air space and cerite, with extra mineral wool pad around ice chamber; a perfect sanitary insulation. Provision chamber white enamel lined and fitted with retinned wire shelves. Ice chamber lined with heavy galvanized sheet steel, with all-metal ice rack. Removable waste-pipe and automatic syphon trap. Roman gold lever locks and hinges to match.

**Outside Measurements**

	<i>Width</i>	<i>Depth</i>	<i>Height</i>	<i>Weight About</i>	<i>Price</i>
No. 322 .....	37¾	22½	51¼	220	
No. 323 .....	39¼	23½	54¼	240	

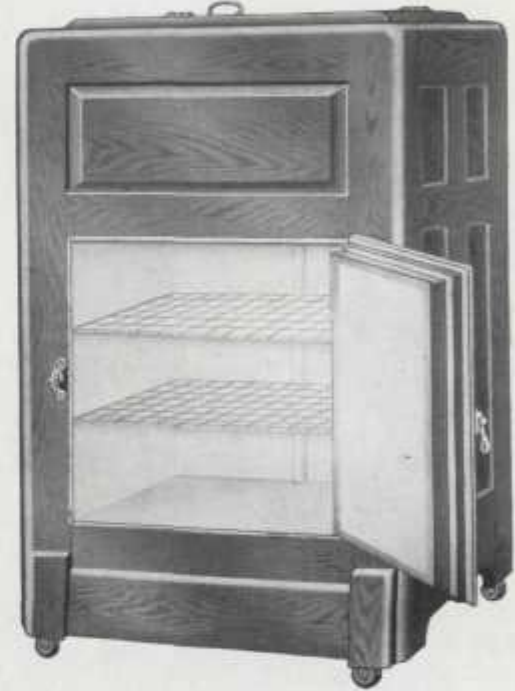


**Style No. 362 White Enamel Lined**

Outside case made of ash, rounded corners, plain panels, swing base, finished golden. Five walls, insulated with cerite and mineral wool. Provision chamber white enamel lined and fitted with retinned wire shelves. Ice chamber lined with heavy galvanized steel, all-metal ice rack, cleanable flues, metal syphon trap at bottom of waste pipe. Bronze locks and hinges, self-retaining casters.

**Outside Measurements**

	<i>Width</i>	<i>Depth</i>	<i>Height</i>	<i>Weight About</i>	<i>Price</i>
No. 362 .....	25½	18¼	41½	110	

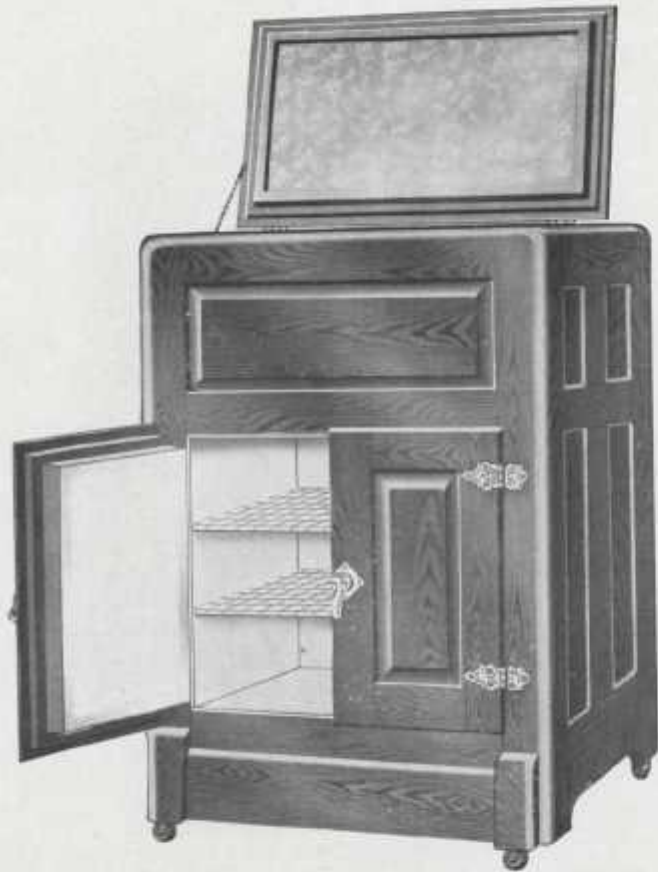


**Style No. 364 White Enamel Lined**

Outside case made of ash, rounded corners, plain panels, swing base, finished golden. Five walls, insulated with cerite and mineral wool. Provision chamber white enamel lined and fitted with retinned wire shelves. Ice chamber lined with heavy galvanized steel, all-metal ice rack, cleanable flues, metal syphon trap at bottom of waste pipe. Bronze locks and hinges, self-retaining casters.

**Outside Measurements**

	<i>Width</i>	<i>Depth</i>	<i>Height</i>	<i>Weight About</i>	<i>Price</i>
No. 364 .....	28¼	19½	44½	130	



**Style No. 366 White Enamel Lined**

Outside case made of ash, rounded corners, plain panels, swing base, finished golden. Five walls, insulated with cerite and mineral wool. Provision chamber white enamel lined and fitted with retinned wire shelves. Ice chamber lined with heavy galvanized steel, all-metal ice rack, cleanable flues, metal syphon trap at bottom of waste pipe. Bronze locks and hinges, self-retaining casters.

**Outside Measurements**

	<i>Width</i>	<i>Depth</i>	<i>Height</i>	<i>Weight About</i>	<i>Price</i>
No. 366 .....	32½	20¼	45½	160	



**Style No. 367 White Enamel Lined**

Outside case made of ash, rounded corners, plain panels, swing base, finished golden. Five walls, insulated with cerite and mineral wool. Provision chamber white enamel lined and fitted with retinned wire shelves. Ice chamber lined with heavy galvanized steel, all-metal ice rack, cleanable flues, metal syphon trap at bottom of waste pipe. Bronze locks and hinges, self-retaining casters.

**Outside Measurements**

	<i>Width</i>	<i>Depth</i>	<i>Height</i>	<i>Weight About</i>	<i>Price</i>
No. 367 .....	24	19¼	50	140	

**Brantford**  
REFRIGERATOR  
Challenge Style



**Style Nos. 369 and 371 White Enamel Lined**

Outside case made of ash, rounded corners, plain panels, swing base, finished golden. Five walls, insulated with cerite and mineral wool. Provision chamber white enamel lined and fitted with retinned wire shelves. Ice chamber lined with heavy galvanized steel, all-metal ice rack, cleanable flues, metal syphon trap at bottom of waste pipe. Bronze locks and hinges, self-retaining casters.

**Outside Measurement**

	<i>Width</i>	<i>Depth</i>	<i>Height</i>	<i>Weight About</i>	<i>Price</i>
No. 369 .....	26½	19¼	54	150	
No. 371 .....	30½	20¼	54	160	

**Brantford**  
REFRIGERATOR  
Labrador Style

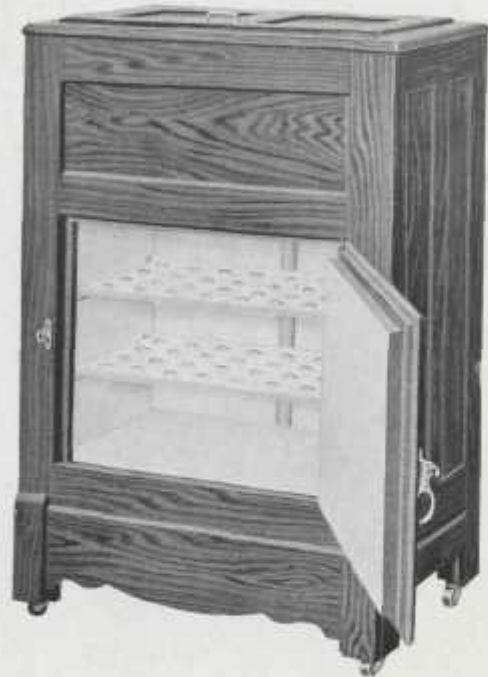


**Style Nos. 1 and 2**

Case made of thoroughly seasoned, kiln-dried hardwood, finished golden. Corners of cabinet rounded, plain panels, swinging base. Five walls, insulated with cerite, waterproof paper and dead air space. Bronze lever locks and hinges, self-retaining casters, cleanable flues, provision and ice chambers lined with galvanized steel; removable provision shelves, all-metal ice rack, metal syphon trap on bottom of waste pipe.

**Outside Measurements**

	<i>Width</i>	<i>Depth</i>	<i>Height</i>	<i>Weight About</i>	<i>Price</i>
No. 1 .....	23¼	16¼	39¼	100	
No. 2 .....	26¼	18¼	41¼	110	



**Style No. 4**

Case made of thoroughly seasoned, kiln-dried hardwood, finished golden. Corners of cabinet rounded, plain panels, swinging base. Five walls, insulated with cerite, waterproof paper and dead air space. Bronze lever locks and hinges, self-retaining casters, cleanable flues, provision and ice chambers lined with galvanized steel; removable provision shelves, all-metal ice rack, metal syphon trap on bottom of waste pipe.

**Outside Measurements**

	<i>Width</i>	<i>Depth</i>	<i>Height</i>	<i>Weight About</i>	<i>Price</i>
No. 4 .....	29 $\frac{1}{4}$	19 $\frac{1}{4}$	44 $\frac{1}{4}$	130	



**MODEL COMBINATION REFRIGERATOR**  
*for*  
**GROCERIES AND PROVISIONS**  
*or for*  
**GROCERIES AND MEATS**



THE best adapted, neatest and most practical refrigerator for the average grocery store, confectionery shop, restaurant, hotel, boarding house or institution where something larger than the ordinary household refrigerator is required and not so large or cumbersome as the made-to-order grocer or butcher, is our Combination Grocer and Meat Refrigerator illustrated on page 26. It is so constructed that it can be used with the right-hand chamber fitted with hooks for hanging meat or if this is not desired, the extra shelves can be used the same as the left hand provision chamber. It is made of Northern Ash, finished golden oak. The wooden doors have heavy raised panels and the glass doors have one sheet of plain, double diamond glass and one sheet of nicely figured sand cut art glass.

The same system of construction as used in our high grade household Refrigerators applies to our line of Model Grocers. Galvanized Steel and White Enamel lined, cleanable flues, adjustable shelves, eight walls and mineral wool filling, which is the most perfect insulation. They have the very best dry air system of circulation. It is a well determined fact that dry air is absolutely necessary for the preservation of food, for with dampness, decomposition sets in. In order to have dry air there must be perfect circulation.

The hinges and lever catches used on doors are the best that can be produced from the manufacturers of these goods and are solid brass castings, perfectly smooth, highly polished nickel-plated finish.

These Refrigerators are mounted on high grade ball-bearing piano casters which work perfectly.

Note that these Refrigerators are all lined with Galvanized Steel and White Enamel. We would not risk our reputation by making a wood lined Refrigerator, wood being too liable to absorb moisture and taint food. We make two sizes of these Refrigerators and they are so constructed as to give the largest amount of space for provision chamber and to produce the lowest temperature.

We do not make special sizes to order, simply the sizes shown in this catalogue. By only making stock sizes and making them in large quantities, we are enabled to sell a very much superior article at a very much lower price than other makers.



### Combination Grocer and Meat Refrigerator

Nos. 24 and 26 Galvanized Steel Lined

Nos. 324 and 326 White Enamel Lined

This refrigerator has solid partition separating meat apartment from other provision apartments. Is fitted up as shown in cut, and is supplied with both provision shelves and meat hooks.

	Width	Depth	Height	Weight About	All Wood Doors	Glass Three Top Doors
No. 24 Galvanized Lined .....	54½	28	65	440		
No. 324 White Enamel Lined....	54½	28	65	440		
No. 26 Galvanized Lined .....	62¾	31½	73	650		
No. 326 White Enamel Lined....	62¾	31½	73	650		

When ordering state whether all wood doors are wanted or glass panels in top doors. When this is not specified, we ship the latter.



IN the following pages are shown the finest range of patterns and the best grade of screen doors and screen windows ever shown to the trade. Our position as the premier makers of this line of goods in the Dominion has been long established. Our facilities for making this line of goods are unequalled in Canada and unsurpassed on

the continent.

### General Description of our Screen Doors

All our doors are made of good dry pine which is carefully inspected and culled so that only suitable lumber is used. They are put together with large hardwood dowels and glued joints. The face is nicely moulded, wire cloth is put in with a key in such a way as to draw it tight and conceal the rough edges.

Only the best quality of wire cloth is used.

The finish of our doors has long been our pride. Our graining machine is the most modern on the market, and gives a fine quartered oak effect. We use the best fillers, stains and varnishes to withstand weather exposure, and as these are all hand-brushed on, the splendid effect for which our doors are noted is obtained.

Just a word about crating. We pay particular attention to this item, and use about twice as much crating as other manufacturers, thus securing greater protection to wire cloth which greatly overcomes liability to damage from rough handling by transportation companies.

On our varnished doors we put a thin strip of wood across top, bottom and centre and nail crating to this, thus avoiding marring face of doors.

Every door is inspected before leaving factory.

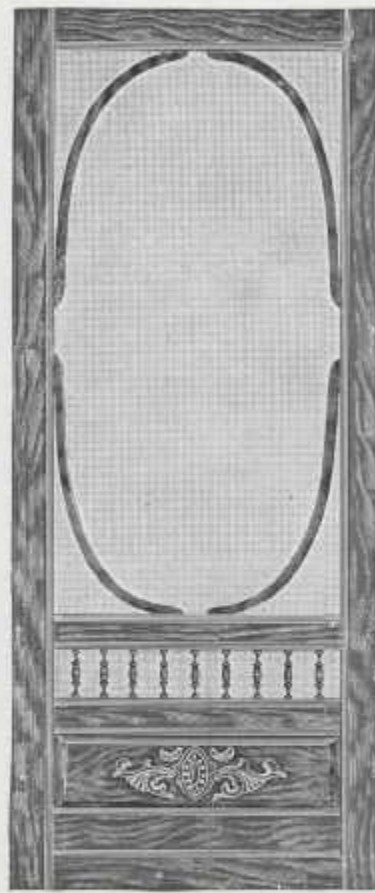
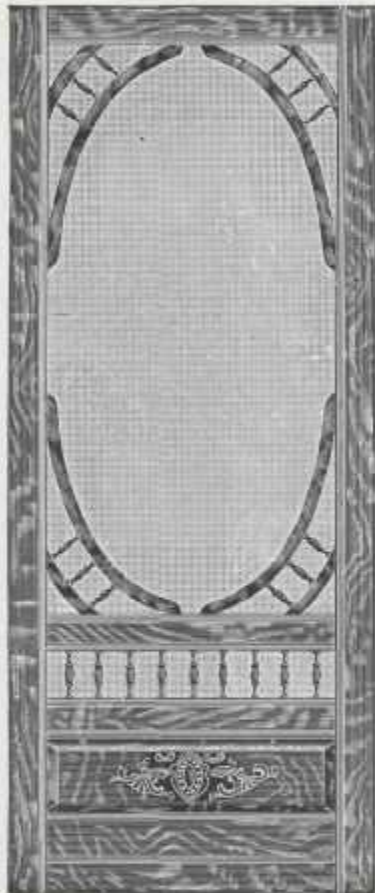
### Regular Sizes

Size No.	Width	Height
11	2' 6"	6' 6"
12	2' 8"	6' 8"
13	2' 10"	6' 10"
14	3'	7'

For special sizes on Nos. 72, 70 and 68 add 50 per cent. For special sizes on all other doors, add 40 per cent. If larger than 3 x 7, add 20 cents per square foot for the extra size.

No door should be made higher than 7 ft. 6 in. For anything higher than 7 ft. 6 in. a top screen should be used to fill the space at top and make door as low as possible. Price of top frame, 20 cents per foot. All orders for doors over 7 ft. 6 in. will be made with top screen unless otherwise instructed.

All doors are crated in half-dozen and an extra charge of 30 cents per package is made for each package over 2 to the dozen.



**No. 72**

Made of Clear Pine, 4-inch Stiles, Grained Quartered Oak, Filled and Varnished.

**Price per dozen**

Weight per dozen, about 350 lbs.

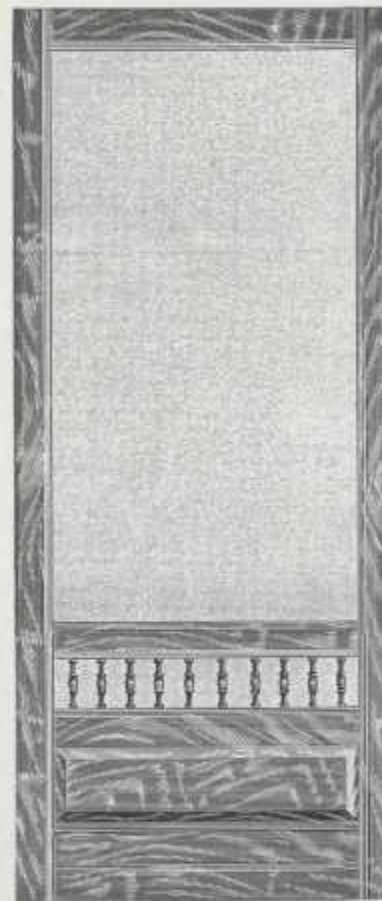
**No. 70**

Made of Clear Pine, 4-inch Stiles, Grained Quartered Oak, Filled and Varnished.

**Price per dozen**

Weight per dozen, about 300 lbs.

*For Stock Sizes and further description see page 27.*



**No. 68**

Made of Clear Pine, 4-inch Stiles, Grained Quartered Oak, Filled and Varnished.

**Price per dozen**

Weight per dozen, about 300 lbs.

**No. 23**

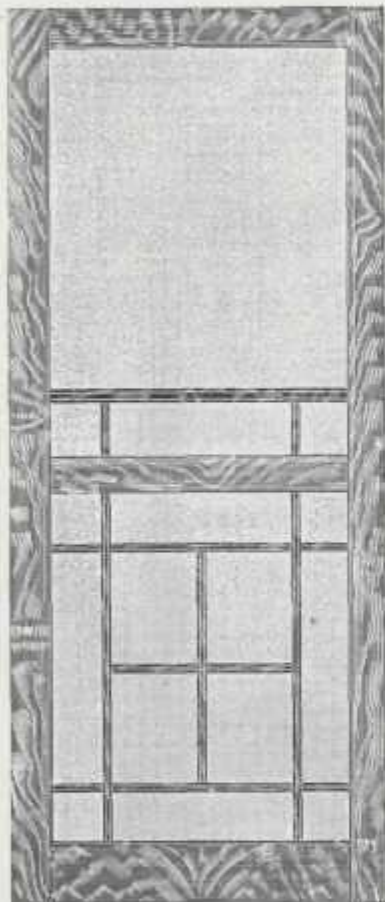
1 1/8 Mortised Non-sagable Door Made suitable for casement attachment or to be fitted in door frame. Made of Clear Pine, 3-inch Stiles, Grained Quartered Oak, Filled and Varnished.

**Price per dozen**

Weight per dozen, about 250 lbs.



**Brantford**  
SCREEN DOORS

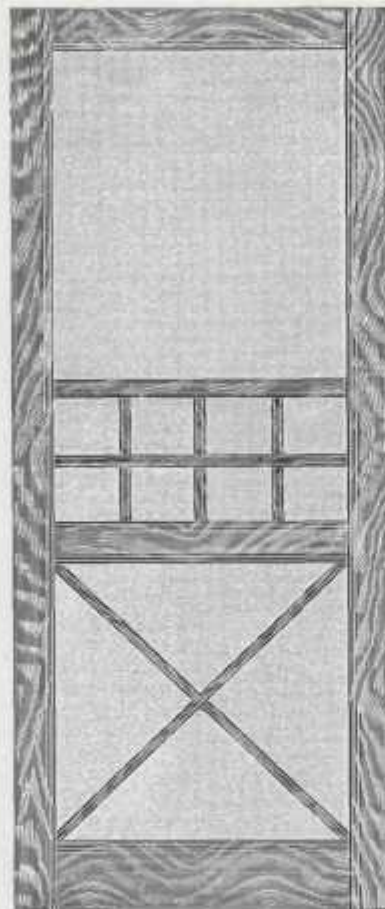


**No. 58**

Made of Clear Pine, 4-inch Stiles, Grained Quartered Oak, Filled and Varnished.

**Price per dozen**

Weight per dozen, about 265 lbs.



**No. 54**

Cross-brace in bottom panel prevents sag. Grill in centre of door high enough to protect wire cloth.

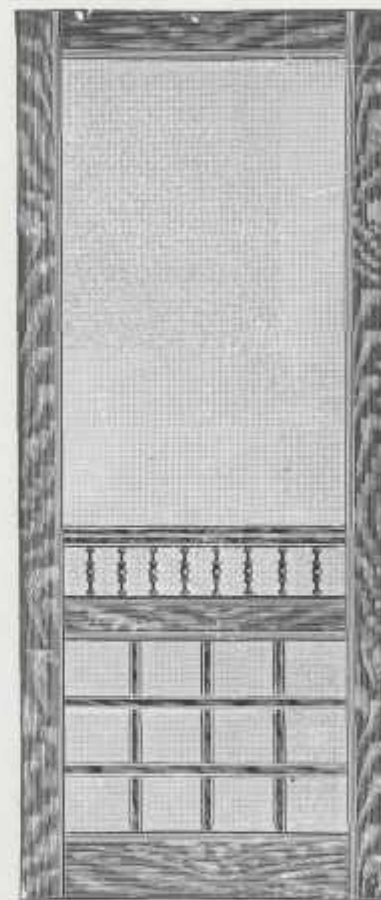
Made of Clear Pine, 4-inch Stiles, Grained Quartered Oak, Filled and Varnished.

**Price per dozen**

Weight per dozen, about 250 lbs.

*For Stock Sizes and further description see page 27.*

**Brantford**  
SCREEN DOORS



**No. 48**

Made of Selected Pine, 4-inch Stiles, Grained Quartered Oak, Filled and Varnished.

**Price per dozen**

Weight per dozen, about 250 lbs.

*For Stock Sizes and further description see page 27.*

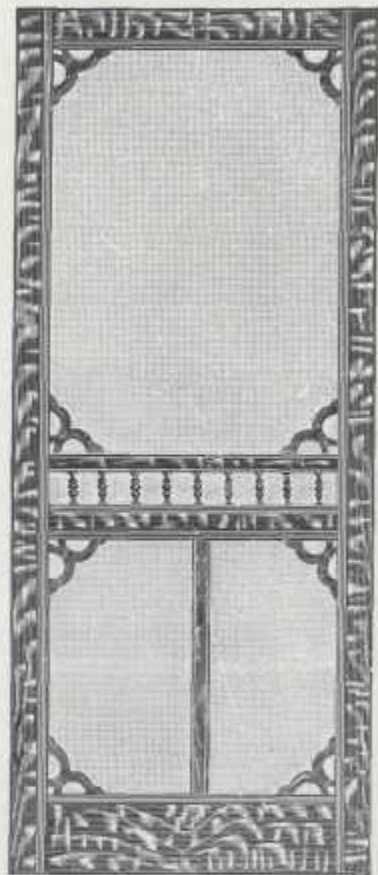


**No. 42**

Made of Selected Pine, 4-inch Stiles, Grained Quartered Oak, Filled and Varnished.

**Price per dozen**

Weight per dozen about 250 lbs.



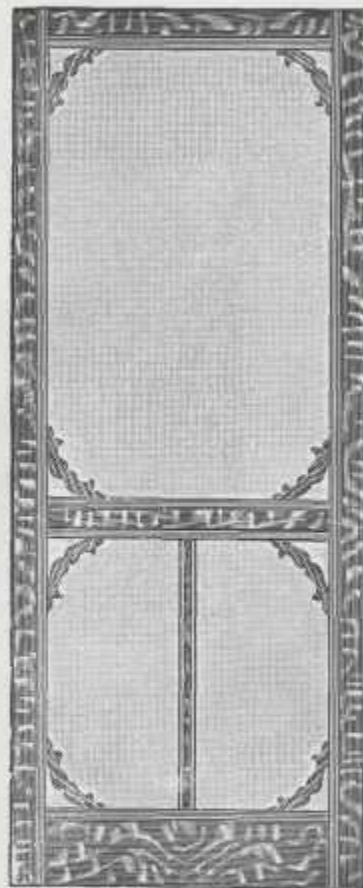
**No. 40**

Made of Selected Pine, 4-inch Stiles,  
Grained Quartered Oak.

**Price per dozen**

Weight per dozen, about 255 lbs.

*For Stock Sizes and further description see page 27.*

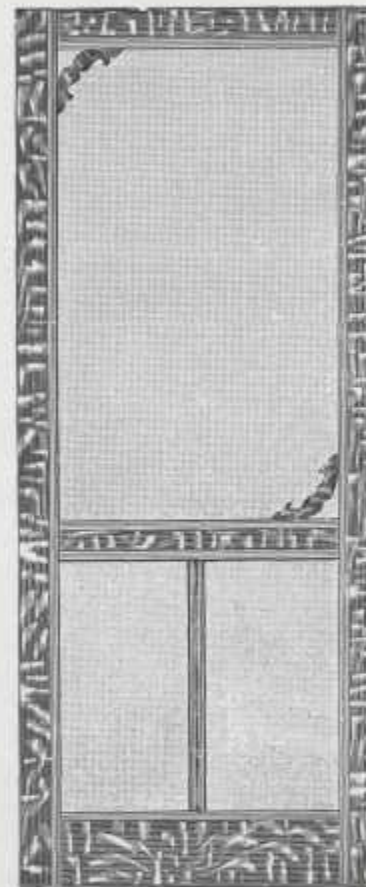


**No. 32**

Made of Selected Pine, 4-inch Stiles,  
Grained Quartered Oak.

**Price per dozen**

Weight per dozen, about 235 lbs.



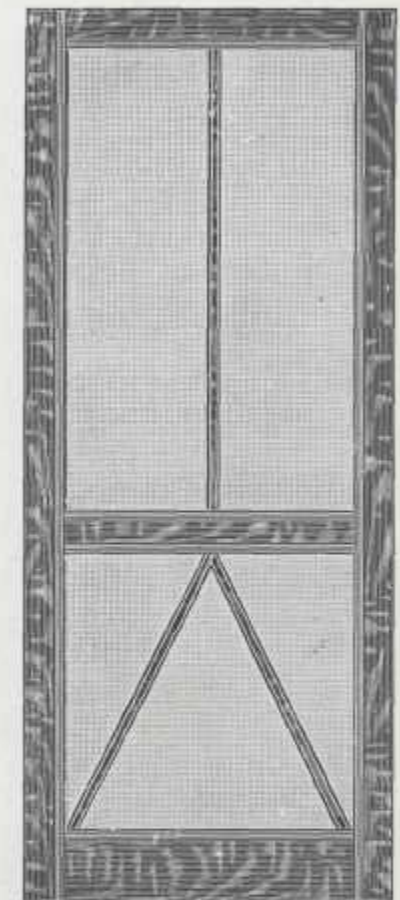
**No. 26**

Made of Selected Pine, 4-inch Stiles,  
Grained Quartered Oak.

**Price per dozen**

Weight per dozen, about 225 lbs.

*For Stock Sizes and further description see page 27.*



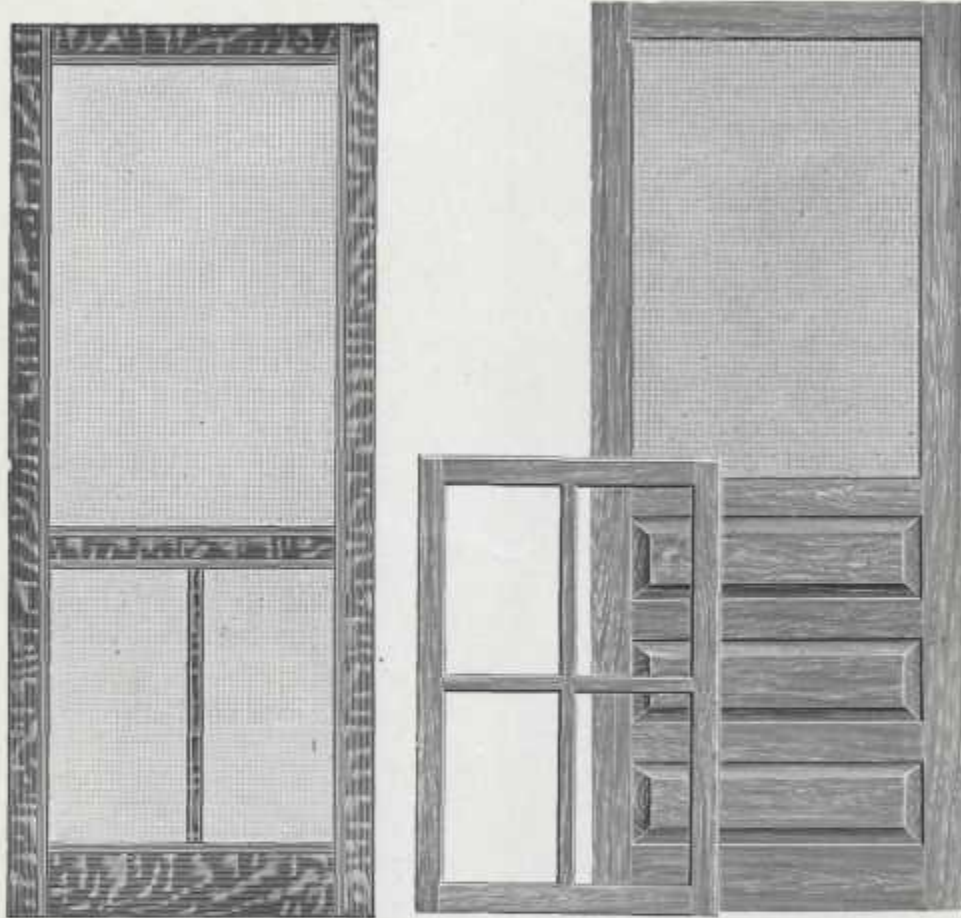
**No. 22**

Made of Pine, 4-inch Stiles, Grained  
Quartered Oak.

**Price per dozen**

Weight per dozen about 245 lbs.

**Brantford**  
SCREEN DOORS



**No. 20**

Made of Pine, 4-inch Stiles, Grained  
Quartered Oak.

**Price per dozen**

Weight per dozen, about 225 lbs.

Combination Storm and Screen Door No. 10.  
This door is made of selected pine, finished  
to 1 1/8 in. Finished Surface Oak, Filled and  
Varnished. Made in four sizes to all stand-  
ard Doors.

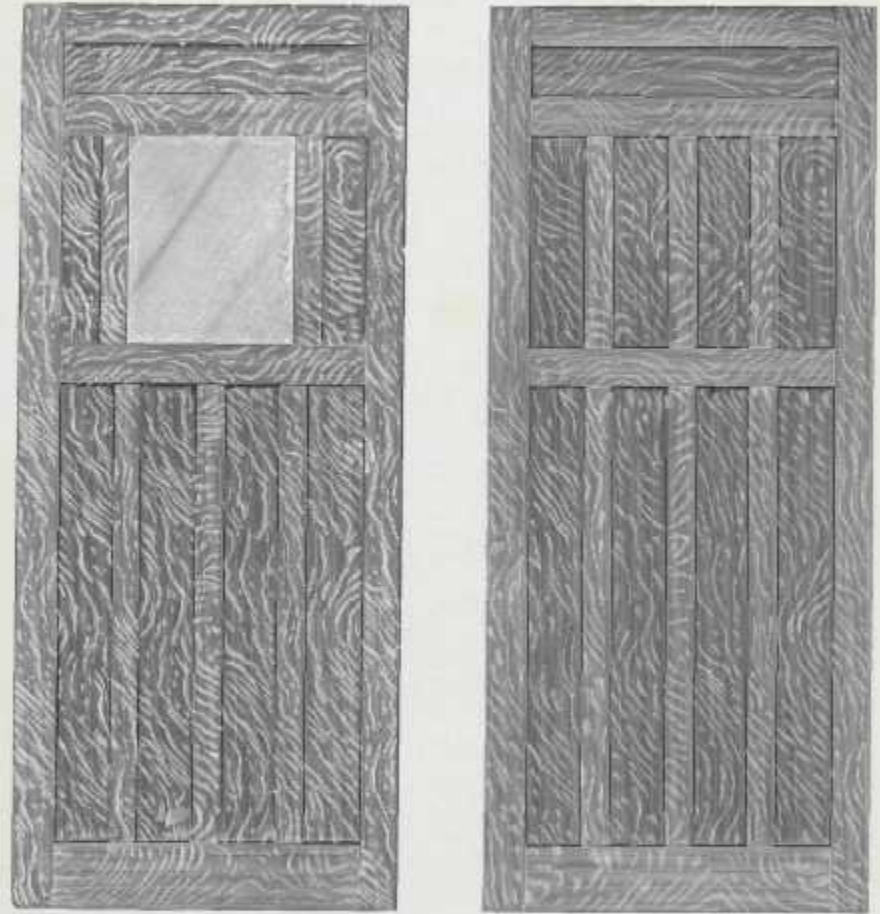
Size of Door	Size of Glass for Sash
2 ft. 6 in. x 6 ft. 6 in.	9 in. x 16 in.
2 ft. 8 in. x 6 ft. 8 in.	10 in. x 17 in.
2 ft. 10 in. x 6 ft. 10 in.	11 in. x 18 in.
3 ft. x 7 ft.	12 in. x 19 in.

Owing to the construction of this door and  
sash for same, we cannot make odd sizes.

**Price per dozen**

Weight, door and sash complete, 490 lbs.  
per dozen.

**Brantford**  
STORM DOORS



**Price  
Per Dozen**

**No. 5—Grained Only.**  
**No. 9—Grained, Filled and  
Varnished.**

Weight Per Dozen about 380 lbs.

Sizes of Doors	Size of Glass
2 ft. 6 in. v 6 ft. 6 in.	12 in. x 16 in.
2 ft. 8 in. v 6 ft. 8 in.	14 in. x 18 in.
2 ft. 10 in. x 6 ft. 10 in.	16 in. x 20 in.
3 ft. 10 in. x 7 ft. 10 in.	18 in. x 22 in.

**No. 7—Grained Only.**

**Price  
Per Dozen**

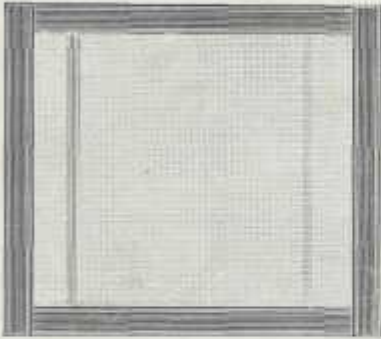
**No. 8—Grained, Filled and  
Varnished,**

Weight Per Dozen about 380 lbs.



### Perfect Adjustable Window Screen

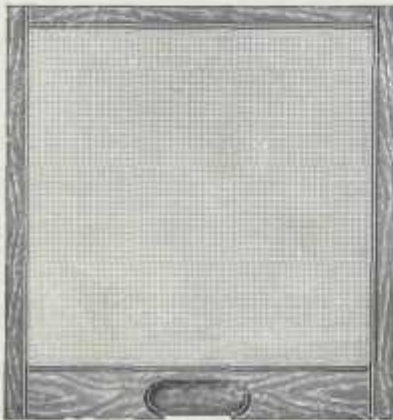
Our Perfect Screen has many features to commend it to the trade. It is made of selected hardwood, finished in oil. The edges of the wire cloth are entirely covered with wood; the angle irons are turned down so that they hug the wire cloth closely, leaving no space for flies to enter. The wire cloth used is the best on the market, and is well secured to frame. The adjustment of this screen is perfect, and it works with absolute freedom. The angle irons are painted black to match the cloth. It is the neatest looking, nicest working screen on the market.



No.	Height	Closed	Open	per doz.
1	10	18	28	
2	10	22	36	
3	10	26	44	
4	14	14	20	
5	14	18	28	
6	14	22	36	
7	14	26	44	
8	14	30	52	
9	14	34	60	
10	18	18	28	
11	18	20	32	
12	18	22	36	
13	18	26	44	
14	22	22	36	
15	22	26	44	
16	24	30	52	
17	24	34	60	

Weight per dozen, about 30 lbs.

### Special One-Piece Window Screens Made to Order



This Screen is made to fit any window. It fits underneath the top sash and covers the full size of the lower sash. Is made of one-inch stock well finished. In ordering give height and width. Be careful that the measurement is correct. See price list for price per square foot.