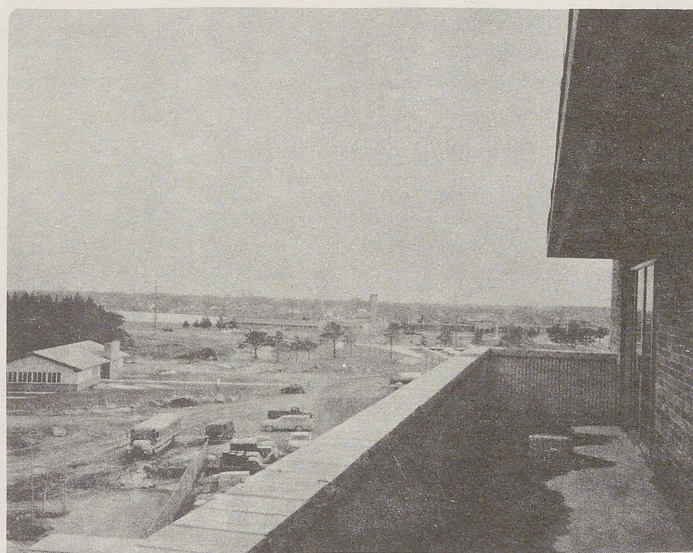


Bored with weekend life in the dorm, I decided a change was in order. But What? And then I saw it. The new natural resources building. It looked impressive as I approached it. That is if you disregard all the junk laying around it. If the exterior was impressive the interior was much more so. Walking up to the fourth floor I received the biggest shock of my life. Well maybe not the biggest, but a shock never the less. Looking out the window overlooking the balcony was the biggest, brownest, most voluptuous mass of smoke and smoke stacks I ever saw. After this temporary shock I looked out over the land, not really a bad view even though the thought that building might not yet be safe for habitation did kind of bother me. All in all it was nice, very nice.



STUDENTS LOOK TOWARD JOB MARKET

According to a recent Carnegie Committee on Higher Education study American college and university students are gearing their studies to vocational goals.

Undergraduate enrollment in such fields as pre-medicine, pre-law, psychology, journalism, social work, and nursing have risen notably this fall.

Generally, the current economic condition is reflected additionally in the shift away from enrollment in such areas as engineering, education, and physics. There recently has been a sharp drop in employment opportunities in these fields.

The Carnegie study show that the number of new students entering biology this fall was up by 16 percent over last year's number in a survey of 357 institutions.

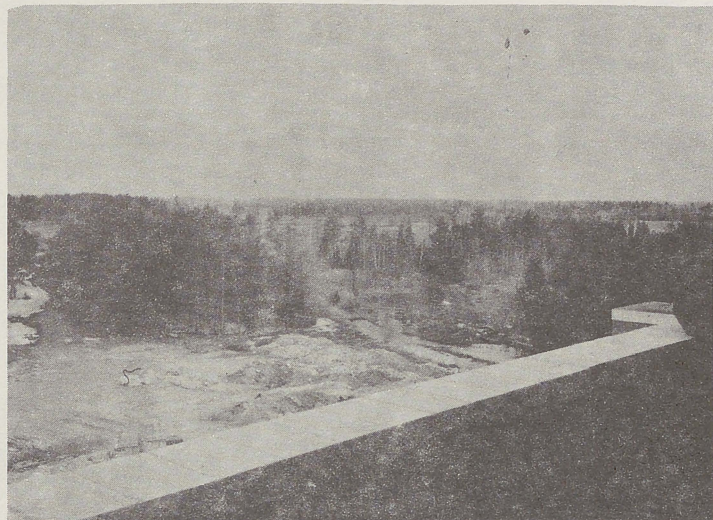
There is still a shortage of trained medical personnel and medical schools report a dramatic rise in applications.

At Harvard, the number of biology majors rose over 30 percent over last year. And enrollment in organic chemistry, a prerequisite for medical school, has doubled in two years.

On the other hand, enrollment in subjects severely affected by the economic slowdown has dropped drastically.

For example, enrollment in aeronautical engineering at the Massachusetts Institute of Technology has dipped from 687 students in 1969 to 385 this year.

At the same time there has been an increase in enrollment in oriental languages courses despite the overall shift away from foreign languages studies. Stanford University reports over the past two years the number of students enrolled in Chinese and Japanese language courses has increased by 25 percent.



DARTMOUTH, Mass. (CPS) -- "Hey, George, what's that out on the front lawn?"

"I don't know, Ernie, but if I didn't know better, I'd say it was a helicopter."

"George, I think it is a helicopter."

"Well, anyway, it's improperly parked. You better go give it a ticket, Ernie."

"No, you go give it, George."

"Somebody better go, because Roberts and Dean Fontera are out there looking at it."

On Wednesday, January 19, 1972, Southeastern Massachusetts University Campus Patrolman George Souza issued a parking ticket to a helicopter. The 'chopper landed on the front lawn and before any questions could be asked, its three occupants disappeared into a nearby building.

A crowd quickly formed around the 'copter and included administrators Dean Fontera and a Mr. Roberts. When attempts to locate the occupants failed, Mr. Roberts ordered Souza to ticket the 'copter in order that he might determine the identity of the occupants. It was noted that the machine bore a Mass. seal and had a designation of some sort of Aeronautical office emblazoned on the tail. Souza muttered something about ticketing the Governor but set to work.

It was later found that the culprits were Highway Department officials out photographing the area and that they had just "dropped in" for lunch. When last seen they were roughly headed nor'-nor'-east at approximately eight hundred feet and climbing.

POOR CHARLIE TUNA, UNION CHEMICAL HAS BAD TASTE

(CPS)--The Union Chemical Company recently announced that a shipment of 5,000 gallons of ultra pure mercury, destined for its giant petro-chemical facility in Stumfton, Ind. was spoiled when a worker, during a routine inspection, inadvertently dropped a tuna fish sandwich into the tank care in which it was being transported. Company spokesmen reported that the mercury was found to contain .5 parts per million of tuna and is considered totally unfit for industrial use.

Student Government in action

CONSIDER:

- An education planned by students as well as faculty
- Small classes
- Individualized instruction
- Programs built around student's interests
- Independent studies and field projects
- Written evaluations instead of letter grades
- Interdisciplinary approaches
- State-supported college
- Rural setting
- Alternative educational method (field study, special studies, etc.)
- Less emphasis on grades

Thomas Jefferson College
Grand Valley State College
Allendale, Michigan
Dear TJC:
Please send me further information.
Name
Address
City, State, Zip



If you've ever floated on a waterbed and enjoyed it, you'll soon have the chance to ooze around on a mud bed.

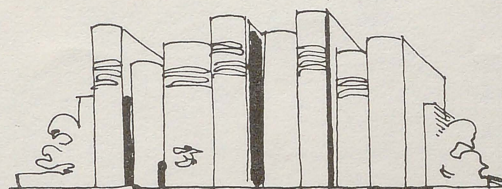
The developer calls it "incredibly comfortable. It's softer than a feather bed. It's like floating. You can relax completely."

The bed is made of a square wooden frame with a sealed bottom filled with "special mud" and covered by a vinyl sheet sealed to the frame. The mud is electrically heated to 85 degrees.



IT'S HAPPENING NOW AT
THOMAS JEFFERSON COLLEGE

Student Center



COLLEGE BOOKSTORE