

The Alpena Public School Board will receive bids on the construction of the Besser Museum tomorrow Tuesday Nov. 24, and construction begins next spring

The main museum building will be a two-floor building. Outside dimensions of the main unit will be 160 by 110 feet. It will be connected by a 40 foot canopied walkway to a 100 by 50 foot exhibit building. Both buildings are to be constructed on the campus of Alpena Community College along Johnson Street, west of Besser Technical School.

The first level of the museum building will contain three large art-class rooms, a workshop, 4 storage rooms and a large meeting room. The lower level will also have the planetarium. This was donated to the museum building by the citizens of this area as a gift to Mr. Besser's Honor. Planned for the upper level are 3 exhibit halls each 50 by 54 feet in size, a receiving room, a director's room, a large terrace, a reception room, administrative offices and mechanical - equipment room. The floors will be variously covered with terrazo and with travitine marble.

The exhibit halls will contain changing exhibits of historical, artistic, industrial, scientific and astronomical material.

The entire building will be finished in what the Besser planners describe as never-before-seen-in-Alpena finishes, colors and textures of concrete masonry units.

The exhibit hall, which will be connected to the museum by a canopied walkway, will be used for housing restored antique automobiles including a 1928 Model A Ford and a 1913 Model T Ford. Also to be housed in the exhibit hall will be a large-machinery-of-the-past display which will include such items as locomotives, steam donkeys and other machinery which have disappeared from the American scene.

As special facilities in the main museum the planners call for a large elevator to be installed near the receiving area which will allow crated exhibits sent from around the world

to be taken down to work areas, carefully uncrated, and set up -- then brought up by the elevator to the exhibit areas.

Lighting throughout the new museum is to be the newest in modern lighting. Point, indirect and refracted types are included. One example of the lighting scheme is for the exhibit areas which will use specially tinted access to outdoor light and indirect artificial light to create reflection-free viewing of graphic-art exhibits.

A Foucault (Pronounced FOO-co) pendulum will be suspended from the top of the building to the floor of the lower level.

The Foucault Pendulum is the only way presently known to man, to graphically display the effect of the earth's revolving.

The display will be hung by a long cable which has at its base a tip which, when the pendulum is swinging will etch its movements on a specially prepared surface. When the pendulum is set in motion it will swing back and forth but is forced to alter its movement by the revolving of the earth around its axis.

Over a period of hours the arc will swing by the same number of degrees from its starting path as our latitude is from the equator.

At the present time very few such exhibits exist in the world.

As far as class-room facilities are concerned, plans are for complete graphic art education facilities including art welding equipment, ceramic kilns, and other equipment unique to graphic arts education.

The entire main building is to be equipped with air conditioning and a sprinkler system.

When the community's gift in honor of Mr. Besser, the planetarium, was an-

nounced on his 82nd birthday, Mr. Besser and the other planners made revisions in their original plans to include the housing of the unit.

Now, a 30 foot-in-diameter covered dome is to be installed at the center of the building. It will be surrounded by halls with the rest of the facilities entering off these halls and from adjoining lobbies. The planetarium will be capable

of displaying not only the stars and planets as we see them, but close-ups of distant planets, stars and galaxies and the view of earth as seen from points out in the universe.

In all, Alpena Community College and the Alpena community as a whole is again to be the recipient of the utmost generosity of Alpena's leading citizen and greatest man --- Jesse H. Besser.

Chrysler Corporation — Where Engineering Puts Something Extra Into Every Car

Louis Motor Sales, Inc.

832 West Chisholm Street — Phone 354-4154

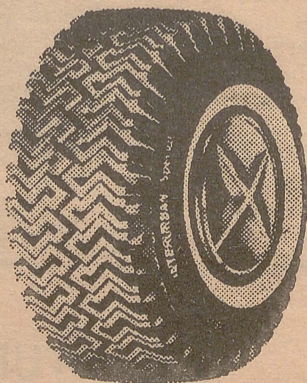
ALPENA, MICHIGAN

LOUIS L. JANESKI, Owner

IMPERIAL — CHRYSLER — DODGE — DODGE DART — PLYMOUTH
VALIANT — DODGE TRUCKS

New Tread

S
N
O
W



T
I
R
E
S

WHITE OR BLACK

6.50—13

7.50—14

\$10.95

NO TRADE NECESSARY

"See Us Today For The Best Tire Buy."

Ball Tire & Gas, Inc.

AND ALL LOCAL MARATHON DEALERS



CAN YOU SOLVE THIS SIMPLE EQUATION?

How many ways can you wear this 4-piece suit by h.i.s? Actually, you can go on and on — for in one wrap-up package here's a suit that keeps you looking your best all-ways! What's in it for you? You get a natural shoulder jacket with lapped seams, patch pockets, hooked vent — and a pull-out handkerchief in the breast pocket to match jacket lining. You get a matching vest that reverses to a Tattersall check. You get a pair of Post-Grad slacks to match (regular cuffs and belt loops). You get a pair of Piper slacks in a contrasting solid shade (extension waistband, no cuffs). Put 'em all together and you've got it made all year long! ...

COAT, REVERSIBLE VEST, TWO TROUSERS ALL FOR ONLY **\$39.95**

MARTINSON'S

"The store with a Heart in the HEART of the City."
100 N. Second Ave., Alpena

EDITOR'S NOTE:

We have received several letters addressed to Nan Launderers, but because they were unsigned, we are unable to publish them. However, if you wish your name withheld, we will do so, and it will not appear in the Timber-Cruiser.