



Founded in 1952

THE TIMBER-CRUISER

Published By The Journalism Class of Alpena Community College



VOLUME THREE, NUMBER FIVE

JANUARY 18, 1961

TEN CENTS PER COPY

A. C. C. Student Activity Fund Explained

DEAN'S COLUMN

This is about rhythm. Recently I read an article in the Saturday Evening Post about nature's built-in clocks — it seems that potatoes have good rhythm — that reminded me of a lecture I used to give many years ago about rhythm. Let me hasten to mention that the rhythm I am discussing has nothing to do with rock 'n' roll. It rather has to do with a way of life. It may well be true that living can be much healthier and more effective, if our habits are rhythmic, eat, sleep, exercise, STUDY, nap, and relax, according to a self established pattern. Stick to this pattern. The rhythm is more important than the emphasis. For example seven hours sleep every night is better than four one night and twelve the next. Five hours of study is every day is better than eight and four. Rhythm during the age of most college young men and women (17-23) is important.



Dean Van Lare

Let me hasten to mention that the rhythm I am discussing has nothing to do with rock 'n' roll. It rather has to do with a way of life. It may well be true that living can be much healthier and more effective, if our habits are rhythmic, eat, sleep, exercise, STUDY, nap, and relax, according to a self established pattern. Stick to this pattern. The rhythm is more important than the emphasis. For example seven hours sleep every night is better than four one night and twelve the next. Five hours of study is every day is better than eight and four. Rhythm during the age of most college young men and women (17-23) is important.

BULLETIN

The College library will be open only Thursday evening from 7 p.m. until 9:30 p.m. It will then be closed evenings for the remainder of this semester.



KAREN BENGHAUSER

JOANNE STANDEN

ANNUAL CHRISTMAS TEA WELL ATTENDED BY STUDENTS, GUESTS

Alpena Community College held their annual Christmas Tea from 2 to 4 in the college lounge December 18, 1960. Joanne Standen (right) is being served tea by Karen Benghauser (left), both A. C. C. sophomores.

The tea was sponsored by the college social affairs committee and it served students, faculty, board members, alumni and their wives. Pat May, general

chairman, was assisted by Mariette Himes, Beverly Des Champs, Roger Bauer, Tom Krebs, Carol Werth, and Joan Lutes.

On the serving committee were Eleanor Thompson, Jonalee Kowalski, Carol Werth, Carol Hagadorn, John Sturgis, and Karen Benghauser. Faculty advisors and Mrs. Flora Stenzel and Mrs. Jule Hartwick.

Is seems a good idea to convey to the student body information regarding the nature, function, and operation of the College Student Activity Fund.

The College Student Activity Fund derives its income from three main sources:

- (1) The student activity fee
- (2) The annual Fund Drive, now being conducted
- (3) Income from college activities, such as athletic contests and general auxiliary enterprises of the college.

The College Student Activity Fund maintains all of those activities of the college not in the budget of the Board of Education. It is through this account that non-academic student activities of the college are conducted, such as athletics, clubs and organizations, debate, music, radio and drama, snack bar, book store, student aid, Student Council, social affairs, and the TIMBER-CRUISER.

All clubs and organizations must maintain their accounts in the College Student Activity Fund. No approved college organization may maintain its own bank account, and no club or organization or any other group in the college is permitted to hold its own funds or pay its bills in cash. All receipts must be turned in at the office and expenditures of the organizations made by check from the Fund. This procedure assures a record of all funds received and disbursed.

Clubs have their own account in the Fund, and this separate account is maintained on the books as a revolving fund. For example, the Radio Drama Club has an account in the activity fund. Its receipts are credited to the Radio Drama account, and its expenditures are charged to (See ACTIVITY, Page 4)

ACC Debate Squad Meets North Central Michigan Today

The Debate Squad of Alpena Community College will host North Central Michigan College's squad from Petoskey Wednesday, January 18, here at the college.

Community College debated Petoskey last month and they are now returning to meet A. C. C.'s squad on a home and home basis. This is the first year that A. C. C. has played host to N. C. M. C.

Professor DeLysle Henry, debate coach, sincerely urges students and friends to attend the debates in order to bolster the spirit of the squad. For those wishing to attend, the debates will be held at 3:00 p.m. and at 4:30 p.m. at the college and at 8:00 p.m. debates will be held in the Little Theater at A. H. S.

The debate topic for this year is, Resolved, "That the United States should adopt a plan of compulsory health insurance for all citizens."

Judging the debates will be Mr. Carl Keen of the English department at A. C. C. and Professor Nelson of the Speech Department, N. C. M. C.

Vigorously representing A. C. C. on the squad will be: First Affirmative — Chuck Anderson and Dennis Snyder; Second Affirmative — Jack McLarty and Keith Wallace; First Negative — Doug Allyn and Sharron Gibson; Second Negative — Eileen Chrzan and Theresa Doajkowski; Third Negative — Barb McVicar and Sylvia Senick. Dave Aikens is alternate for the First Negative team.

The squad is able to boast of a proud record of 8 wins and 2 losses.

Radio Drama Club Plans New Play

The Radio Drama Club has swung back into action. The project now at hand is the three act play which will be presented on the 9th, 10th, and 11th of March. The name of the play is "The Mouse Trap."

Casting of the play will be held in the near future. Anyone who is interested in helping with the play is invited and encouraged to do so. The meeting dates are posted on the bulletin board before each meeting.

Pat May, pres.

Dr. O'Dell Discusses Socialized Medicine Today at A. C. C.

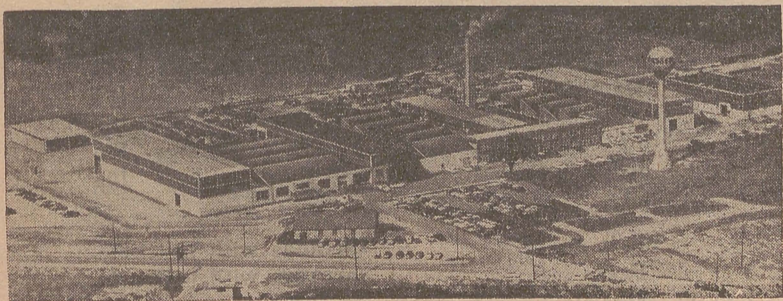
Dr. Frederick C. O'Dell, Jr., of the Alpena General Hospital Medical Staff will discuss socialized medicine with the Political Science classes today.

Dr. O'Dell is well qualified to discuss this controversial matter, having spent several years in London, England, working under the government supervised methods of controlled medical activity.

Second Half Classes To Begin Thursday February 3rd

Alpena Community College begins its second semester January 31, 1961 with registration of freshmen. Sophomores will register February 1. Classes begin 8:00 a.m. Thursday, February 3rd.

Mr. Gerald A. Krueger, speaker (See BESSER, Page 4)



BESSER COMPANY PLANT AT ALPENA, MICHIGAN

BESSER COMPANY OUTLINES NEEDS FOR SPECIAL TRAINING AT COLLEGE

In furtherance of the policy of the Alpena Community College to fulfill the needs of the community, the TIMBER CRUISER has begun a series of interviews with the industries of this city.

The Besser Company, which is the oldest manufacturer of concrete masonry machinery in the world, has made a great industrial contribution to Alpena and Michigan during the past half-century.

With factories all over the free world, the Besser Company

provides scientists and skilled knowhow men for the advancement of Concrete Masonry Progress. Here in Michigan's far North Country, rich in natural resources vitally needed by the building industry, the Besser Company had its modest beginning, and has grown during the last half century into its unique position of being the foremost scientific laboratory for the advancement of concrete masonry.

Herbert Fox Addresses N.E.A.

Mr. Herbert Fox, Administrative Assistant for Elementary Alpena Schools was guest speaker at a meeting of A. C. C.'s Student National Education Association last week.

Discussing the grade school system within the city, Mr. Fox outlined an experimental program concerning ability grouping in the lower grades now being tried in some Alpena schools.

At a previous meeting, officers were elected and plans for the year outlined. Officers include Roger Voss, President; Karen Benghauser, Vice President; Ed Nagy, Treasurer; Pat May, Secretary; Maggie Makowski, Historian; and Ingrid Alstrom, Student Council Representative.

Education majors who have not previously attended meetings are invited to join. Meeting dates are posted on the bulletin board.

THE TIMBER CRUISER

Official Newspaper of The Journalism Class of
Alpena Community College

Published Monthly—September through June at
666 Johnson Street Alpena, Michigan

Editor Robert E. Oliver
News Editors Roger Bauer, Woody Derrohn
Feature Editors Ingrid Alstrom, Marian Prieur
Society Editors Gail Amore, Janice Wieschowski
Sports Editors Tom Miller, Doug Siegert, Edward Nagy
Copy Editor Donna Prokopowicz
Photographer Edward Nagy
Cartoonist Carol Werth
Advertising Richard Campbell
Circulation Manager William Davis
Faculty Moderator—M. D. Orr

Suggestions Save on Dry Cleaning

The Christmas Holidays having come to an end, many of us have been left with soiled clothes to wear. I would like to give you a few pointers that might interest you from the Homemakers' Department of Information at Michigan State University.

Water spills sometimes make spots on clothing. Bunetta Tabakka, clothing specialist at the Michigan State University says some water spots can be removed by first allowing the water to dry, then rubbing it lightly with another part of the same fabric.

Wire hat racks on the closet door provide good storage — if the hats are moved around occasionally. The clothing specialist suggests this be done to avoid ridges from the wire in the felts or hat bands.

Take those coats and suits off wire hangers when they come from the dry cleaners. Home economists at Michigan State University suggest coat and suits be put on shoulder-shaped wooden hangers which will support the weight and hold the shape of these garments.

These hints may be helpful to you in keeping your clothes in the best possible condition.

Janice Wieschowski

NOTICE

Friday, January 27th, sleigh ride. See Sharron Gibson or Linda Parrilla.

Gail's Gab

Christmas vacation is over and everyone is back to the "old grind again and madly studying for exams. Most everyone will agree that a well balanced diet and a good night's rest will help students' ability to think clearly and study harder.

I have a message here especially directed to the co-eds which may be helpful in their kitchens now or in later life. It is from the Homemakers' News of the Michigan State University's Department of Information Services.

Anita Dean, foods and nutrition specialist at Michigan State University, says processing meat is speeded by placing packages against the freezer sidewalls or on metal freezing plates. Some space should be left between packages so air can circulate freely.

It is best to process only a few packages at a time. Overloading the unit with unfrozen foods slows down the rate of freezing sometimes to the point that food loses quality or spoils. To keep food at its best, packages should be limited to the amount that will freeze solid within 24 hours. Mrs. Dean says this is about two to three pounds of food for each cubic foot of freezer capacity.

As a last minute warning to all campus-walkers, exams count sometimes as much as three-fourth of the final grade, so get plenty of rest, and, Good Luck!

I.V.C.F. Plans Future Events

The Inter-Varsity Christian Fellowship group has changed the dates and hours of its meetings. They are now held every first and third Thursday evenings of the month at 7:45 p.m. Although there will be no more meetings until after the "recovering days" following the exams, a notice will be posted on the bulleting board regarding the time and place of future meetings. Everyone is welcome to come.

The guest speaker at the last meeting was Bob Hastie, a senior from Michigan State University who gave us an outline as to the manner in which Michigan State's Inter-Varsity group conducts its meetings. After his talk, refreshments were served.

For future events a toboggan party is slated for January 25 at Rogers City.—Linda Courtney

ALPENA COMMUNITY COLLEGE

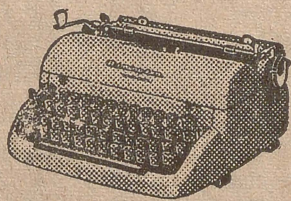
TENTATIVE SECOND SEMESTER SCHEDULE

February 2, 1960

NO.	DEPT. & COURSE	CR. HRS.	INSTRUCTOR	TIME	DAYS	ROOM
ART						
210	Design in Materials	3	Feindt	4-6	M W	107AHS 107AHS
BUSINESS ADMINISTRATION						
206	Accounting	3	Underwood	4-6	TTh	101
104	Accounting	3	Underwood	1-3	TTh	101
202	Economics	3	Underwood	10	MWF	101
204	Business Law	3	Underwood	8	MWF	101
208	Merchandising					
EDUCATION						
325F	Education	3	MacCullough	2	TThF	107
325E	Education	3	MacCullough	1	TThF	106
206	Public School Music	3	Fast	3	TThF	104AHS
ENGLISH						
101	English	3		9	MTTh	108
102	English	3	Keen	8	MWF	108
			Orr	10	MWF	108
			Orr	1	MWF	108
			Keen	2	TThF	108
			Keen	3	MWF	108
			Keen			
			(Seminar)	2	MW	108
				7	Th	302AHS
			Keen	7-8:30	MT night	302AHS
103	Speech	3	Lowry	11	TThF	107
104	Speech	3	Lowry	3-5	T	107
				3	Th	107
202	English Literature	3	Lowry	8	MWF	104
206	Humanities	4	Lowry	2-4	MW	107
202	Journalism	2	Orr	10	TTh	108
ENGINEERING						
102	Engineering Drawing	3	Ryan	8-10	TThF	110
106	Machine Shop	3	Ilisley	5-8 (Lab)	M	105AHS
				5-7 (Lec)	T	105AHS
				4-7 (Lab)	Th	105AHS
104	Architectural Drawing	3	Ryan	12-2	MWF	110
204	Dynamics	3	Herner	8 p.m.	MTTh	204AHS
203	Mechanisms	3	Herner	7 p.m.	MTTh	204AHS
INDUSTRIAL TECHNICAL						
TERMINAL						
104	Technical Drafting	2	Ryan	8-10	MW	110
108	Elements of Electricity	4	Olness	3-4	M (Lec)	113AHS
				4-5	TTh (Lec)	113AHS
				3-5	W (Lab)	113AHS
10	Element of Machine Shop	3	Ilisley	7-10	Th	105AHS
				4-7	W	105AHS
202	Electronics	3	Olness	7-9	MTh night	113AHS
LANGUAGES						
102	German	4	Glennie	9	MTWTh	105
104	French	4	Glennie	10	MTWTh	105
204	French	4	Glennie	3	MTThF	104
202	German	4	Glennie	8	MTWTh	105
MATHEMATICS						
13	Intermediate Algebra	2	Ryan	7-10	T	206AHS
100	Basic Mathematics	3	Hartwick	9	MWTh	106
104	Plane & Solid Analytic Geometry	4	Hartwick	10	MTThF	107
103	College Algebra	4		2	MTThF	104
202	Calculus	5	Hartwick	11	MTWThF	104
102	Plane Trigonometry	3	Homeister	3	MW	106
				4	Th	106
106	Slide Rule	1	Ryan	10	T	106
MUSIC						
102	Piano	1	Fast		(arrange with instructor)	
104	Voice	1	Fast		(arrange with instructor)	
112	Collegiate Singers	1 cr/yr	Fast	1	TTh	114AHS
202	Piano	1	Fast		(arrange with instructor)	
204	Voice	1	Fast		(arrange with instructor)	
106	Music Theory	3				
PHYSICAL EDUCATION						
100	Physical Education	1/2	Howard	7:30-9:30	W night	AHS Gym
			Krumdick	7:30-9:30	W night	AHS Gym
202	Community Recreation	3	Krumdick	1	MWF	105
205	Archery and Badminton	1	Krumdick	2	TTh	AHS Gym
204	Volleyball and Basketball	1	Krumdick		(arrange with instructor)	
104	Personal and Community Health	3	Krumdick	2	MWF	105
200	Elementary Modern Dance	1/2	Hendershott	2	TTh	AHS Gym
208	Physical Ed Student Teaching	1 cr/yr			(arrange with instructor)	
106	Rhythm Foundations	1/2	Howard	8	TTh	White Gym
GENERAL PSYCHOLOGY						
200	Psychology	3	Loomis	11	MWF	101
			Tupper	3	TTh	108
				3	F	101

(See Page Four)

NEW RENTAL - PURCHASE PLAN



RENT A TYPEWRITER FOR ONLY

\$6.00

per mo.

3 months rental can be
applied toward purchase.

GOHLKE TYPEWRITER SERVICE

430 N. 2nd Ave.

Alpena

Phone EL 4-5489

Lumberjacks Edge Past Jackson Five By 3

GARRY GUNDERSON SETS NEW SCHOOL, CONFERENCE RECORD



Garry Gunderson wrote his name into the record books by scoring 48 points at Muskegon.

Big Huck hit on 20 field goals in 23 attempts and added on 8 charity tosses to give him his

record-breaking total. Most of his points were scored from close in under the basket and a great deal of the credit must be given to Dave Kroll who set him up time after time.

CAGERS BRING HOME TITLE

The A. C. C. Cagers brought home their first Christmas Tournament Championship.

Tom Miller and Garry Gunderson pumped in 26 and 25 points respectively as ACC won over Northwood Institute, Alma.

In the semi-final round Alpena eliminated Traverse City by a score of 85 to 65. Again it was Garry Gunderson leading the way as he pumped in 22 points.

With their most impressive defensive display of the year, the A.C.C. Lumberjacks edged by Jackson J.C. Saturday night, 70 to 67. The high-scoring Jack offensive was impeded by the hustling Jackson defense, and the resultant score was well below the Jack's 90-point offensive average. The victory boosted Alpena's conference record to 4 wins, 2 losses, and their overall mark for the year to 8 wins, 2 losses.

This was truly a team victory with none of the Jack's suffering a bad night. Chaffin, Miller, and Hubert were all over the court, ball hawking, applying constant pressure on the visitors. Miller, particularly, was relentless in pursuit and proved once again that he is the best-conditioned athlete on the squad as he played the entire forty minutes without losing that fine edge that is so vital in close ball games.

Jacks Split Road Trip

The A. C. C. cagers pulled up even after their last road trip to Port Huron and Flint. On the first night they downed Port Huron by a score of 98 to 85, but on the following night they were completely overwhelmed by a strong Flint outfit, and suffered a 110 to 64 defeat.

The victory over Port Huron proved to be a costly one, as Fred Hubert, captain and guard of the Jacks was put out of action early in the first half with a severe ankle sprain. As a result of the injury, he not only missed the remainder of the Port Huron game, but also was forced to sit out the all-important Flint contest.

A balanced scoring attack was the key to the Port Huron victory, as the Jacks put five men in double figures. Garry Gunderson was high with 21 followed by Dave Goupil and Dave Kroll with 16, and Tom Miller and Ray Moore with 12 each.

The next night proved to be an entirely different story as the Lumberjacks ran up against the League leading Flint squad. Flint was superior in all aspects of the game as they rolled up their 110 points. This figure tied Alpena for the most points scored in a game this season. Alpena hit 110 against Muskegon earlier in the season. Garry Gunderson was high man for the Jacks with 23 points.

But in explaining the reason for victory instead of defeat one must point to the two big men, Gunderson and Kroll. They scored twelve points between them in the first half and appeared timid on the offensive board. They doubled this output in the second half in addition to putting on a truly remarkable display of rebounding ability. They showed a special enthusiasm for the defensive board and defense in general, although the over eager Kroll can be occasionally driven. These two also contributed four foul shots in the dying moments when a cold hand or stiff elbow would have meant defeat instead of victory.

It is true that the Jacks were not overly impressive offensively. This was due in part to the so-so shooting night and in part to the fact that Coach Dutcher's simple but effective patterns weren't running consistently or well. More important, however, is the revelation that the Jacks can play defense when the circumstances dictate. This could be important in the remainder of the season.

The Jacks are not out of the conference race, although their position is not enviable. A loss at home would be an almost fatal blow.



Fred Gagnon Gary Poch Chuck Anderson Ken Hilla
Mike Lund Roger Bauer

MEN'S BOWLING ENDS TIED

The men's bowling team ended the semester with a three way tie for first place between the following teams: No. 2, consisting of Bill Wright, Roger Wikaryasz and Terry MacNeil; No. 7, consisting of Martin Shea, Garry Gunderson, and Bob Johnson; No. 8, consisting of Joe Van Dusen, Tom Helinski, and Cash Tryban. This tie will be played off next week to determine the semester champs.

The three top bowlers of the season were Joe Van Dusen with an average of 162, Bob Johnson with 157 and Richard Eddy with a 156.

Tom Liske won the prizes offered by the bowling lanes.

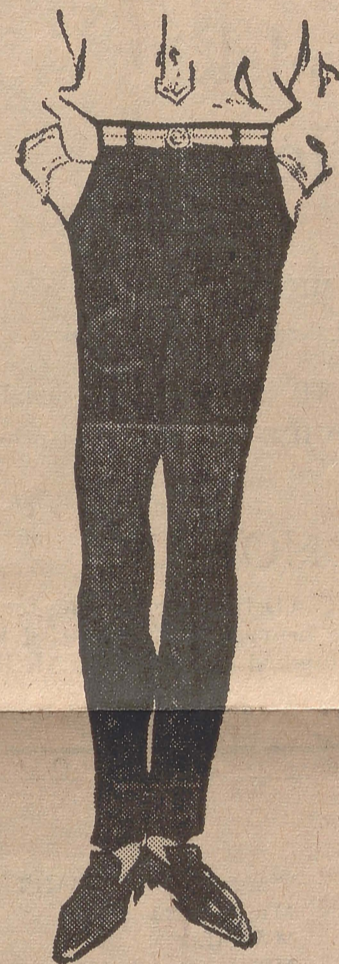
Pickett's
Pharmacy

PRESCRIPTIONS

Lloyd Pickett, B.S.

EL 6-1635

Alpena, Michigan



YOU'RE
MORE
MAN
THAN YOU
THINK YOU
ARE IN
LONG LEAN
YMM* SLACKS

*young man's mood
It's time for the natural change to the Long Lean Look!
YMM Slacks take away the pleats and put a taper in the leg!
Exclusive Permahoid** Waist Inserts prevent rolling at the top!
In magnificent wools and wool blends. In muted shades and spirited tonal effects!

**Pat. Pend.
*T.M. Reg.

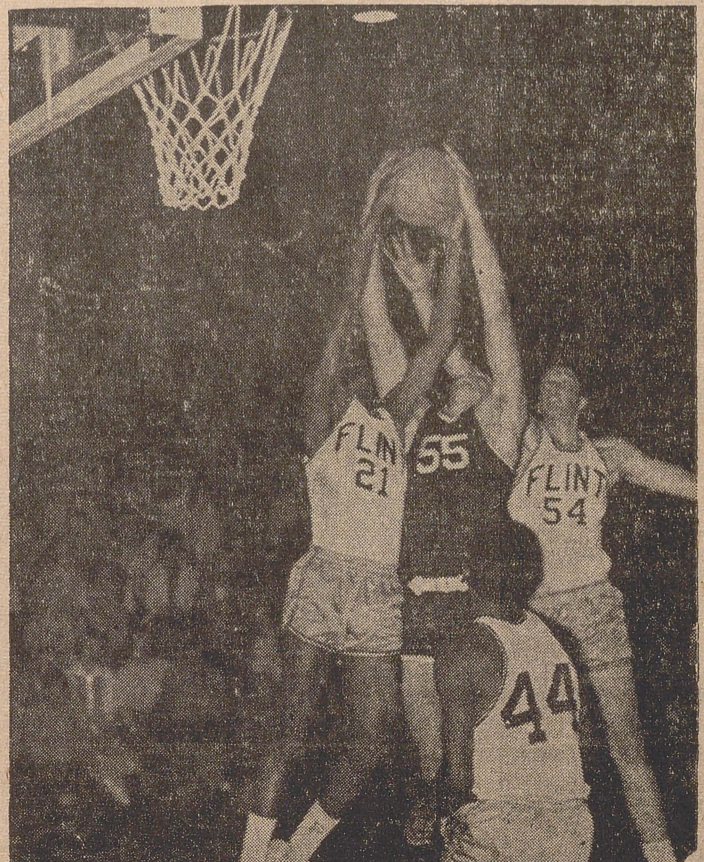
\$11.95 up

Tony & Norm

105 N. Second Ave

Telephone EL 6-1077

Alpena, Michigan



Garry Gunderson, Jack's Center Makes Vain Attempt For Rebound

ACTIVITY

(Cont'd from Page 1)

this account. An individual account, therefore, may accumulate a considerable sum, and it will remain to the credit of the club. Sometimes clubs, at a particular time, have a deficit. The bills are then paid from the general activity fund and the club owes the general activity fund until the club has sufficient funds.

It should be pointed out that there are some activities which we know cannot be entirely self-supporting. An example of this is the TIMBER-CRUISER account.

On the other hand, if there is an unfavorable balance at the end of the fiscal year in the Radio Drama Club, the balance is continued to the next fiscal year.

It is expected, of course, that most clubs and organizations will conduct their activities in such a way that they will be mainly self-supporting.

The College Student Activity Fund is audited each year by a certified public accountant employed by the Board of Education. This is a guarantee that the accounts are properly kept and that all monies handled by the fund are properly accounted for.

Each year a portion of receipts from the Fund Drive is set aside in a student aid account. It is from this account that the college pays its part (10 per cent) of the National Defense Student Loan Program and also makes emergency loans to students.

DEAN

(Cont'd from Page 1)

If you have rhythm during that period, you'll have energy at 45.

Incidentally, I'm told that young men and women worry about annihilation of the human race via atomic bomb, biological warfare, etc. I have no crystal ball but I'd bet that the human race, including us and our off spring, will be around for a long time. It's best to plan it that way in any case. There has been no time in history that the possibility of annihilation did not exist. Perhaps it is wise to look ahead to when you will be 45. Rhythm now may well mean more effective living now and vigor later.

Taps Lead

Women's Bowling

With one more week to bowl, the Taps (Joyce Gilbertson, Carol Longcore and Janice Wieschowski) are now in first place. They have piled up a 16-8 record this semester.

All bowlers are urged to bring their 50 cents dues next week, if not already paid. This will go toward trophies and a picnic at the end of the year.

Shortly after the beginning of the second semester the teams will reorganize. Watch the bulletin board for further information. — Clara Jackson, sec.

Kowalski Dry Cleaners

Main Plant — 131 W. Wisner

ALPENA, MICHIGAN

DRIVE-IN PICKUP, 3rd at Washington

Featuring exclusive STA-NU Process as Nationally Advertised in LIFE, ESQUIRE VOGUE, and other magazines.

SPECIAL NOTICE

Upon presentation of ONE AD from any of the foregoing named magazines the bearer will be entitled to one garment cleaned and finished on a NO CHARGE basis.

Enjoy \$100 a Month

The Metropolitan has arranged a plan that will give you \$100 a months — after your earning days are over. It will cost you nothing to get the facts.

CALL

METROPOLITAN LIFE INSURANCE CO.

Mike Palevich
EL 4-5283

Bill Hainstock
EL 6-0368

ACC COLLEGE SKI CLUB FORMED



Tom Kelly George Holmes Pat May Jack Jacques

Approximately 20 enthusiasts turned out for the first meeting which was held principally for the purpose of organizing the group and electing officers. George Holmes was elected as President and Pat May, Secretary Treasurer.

The normal individual's first reaction when asked to go skiing is, "No. You can break your leg skiing! I don't want to break mine!" This average person doesn't know what he is talking

about. What he doesn't know is that over 90 per cent of those persons who become passengers of the "mountain meatwagon" are novice skiers who attempt maneuvers for which they are not ready. In fact a skier is safer on the slopes than he is riding to and from a ski area in his automobile.

We'll see YOU at the next Ski Club meeting. Watch the bulletin board!

— G. Holmes

BESSER

(Cont'd from Page 1)

ing for the Besser Company yesterday told the TIMBER CRUISER, "With all of the many advancements being made in industry today in the field of automation, our industrial engineering needs have increased tremendously. Industry today finds itself in a position of continually making advancements and improvements requiring better trained personnel — particularly in the fields of Mechanical, Electrical and Industrial Engineering.

"We feel that our local Community College can do much in making available all of the necessary basic subjects in these particular fields. We feel more emphasis has to be placed on all of the various degrees of college mathematics. Other phases of college education levels needed in our particular industry today, but not on as large a scale, are students with a good basic

chemical background who would be eligible as lab employees and top notch stenographers from your present secretarial course."



RENE'S JEWELRY

209 N. Second Ave.
Alpena, Michigan

Authorized Artcarved Jeweler

Alpena Dry Cleaners

Exquisite Cleaning
at
Reasonable Prices

Pickup and Delivery Service
C. B. Boley and Campbell

Tel. EL 4-4829
Alpena, Mich.

(Cont'd from Page 2)

SCIENCE

100	Intro To Nature Study	2
102	Biological Science	4
	Lab I	
	Lab II	
	Lab III	
	Lab IV	
108	Intro to Phys. and Bio Sciences	4
104	Chemistry	4
	Lab I	
	Lab II	
202	Chemistry	4
	Lab I	
206	Physics	5
	Lab I	
210	Geology	3
	Lab I	
106	Conservation of Natural Resources	3

SECRETARIAL SCIENCE

102	Typewriting	2
104	Shorthand	4
107	Office Machines	3
202	Typewriting	3
204	Transcription	3
208	Office Practice	3
210	Business English	3

SOCIAL STUDIES

100	Anthropology	3
102	History of West. Civ.	3
105	Sociology	3
202	U. S. History	3
203	Political Science	3
204	History of Michigan	2
107	Geography	3

Strom	7-10
Strom	9
Strom	2
Homeister	1-3
Homeister	8-10
Strom	10-12
Strom	1-3
Homeister,	10
Strom, Frye	8-10
Frye	11
	8-10
	2-4
Frye	3
	8-11
Olness	2
	2-4
Homeister	11
	1-3
Strom	3
Derthick	10
Stenzel	8
Stenzel	10
Stenzel	11
Stenzel	1
Stenzel	9
	11
Stenzel	9
	11

T night	108AHS
MWTh (Lec)	113
MWF (Lec)	113
MW	111
MW	111
TTh	111
TTh	111
MWF (Lec)	113
T (Lab)	111
MTThF (Lec)	113
MW	112
TTh	112
MWF (Lec)	113
TTh	112
MWF (Lec)	113AHS
TTh	113AHS
TThF (Lec)	108
F	111
MWF	111
MTWTh	103
MTWTh	103
MWF	102
MTTh	103
MTWTh	103
TTh	102
W	102
MW	103
F	

MTTh	107
MWTh	101
MWF	113
TTh	113
F	101
MWF	106
MWF	107
TThF	105
MWF	113
MWF	106
MWF	106
W night	211AHS
MWF	106