

ACTIVITY
(Cont'd from Page 1)

this account. An individual account, therefore, may accumulate a considerable sum, and it will remain to the credit of the club. Sometimes clubs, at a particular time, have a deficit. The bills are then paid from the general activity fund and the club owes the general activity fund until the club has sufficient funds.

It should be pointed out that there are some activities which we know cannot be entirely self-supporting. An example of this is the TIMBER-CRUISER account.

On the other hand, if there is an unfavorable balance at the end of the fiscal year in the Radio Drama Club, the balance is continued to the next fiscal year.

It is expected, of course, that most clubs and organizations will conduct their activities in such a way that they will be mainly self-supporting.

The College Student Activity Fund is audited each year by a certified public accountant employed by the Board of Education. This is a guarantee that the accounts are properly kept and that all monies handled by the fund are properly accounted for.

Each year a portion of receipts from the Fund Drive is set aside in a student aid account. It is from this account that the college pays its part (10 per cent) of the National Defense Student Loan Program and also makes emergency loans to students.

DEAN
(Cont'd from Page 1)

If you have rhythm during that period, you'll have energy at 45. Incidentally, I'm told that young men and women worry about annihilation of the human race via atomic bomb, biological warfare, etc. I have no crystal ball but I'd bet that the human race, including us and our off spring, will be around for a long time. It's best to plan it that way in any case. There has been no time in history that the possibility of annihilation did not exist. Perhaps it is wise to look ahead to when you will be 45. Rhythm now may well mean more effective living now and vigor later.

Taps Lead
Women's Bowling

With one more week to bowl, the Taps (Joyce Gilbertson, Carol Longcore and Janice Wieschowski) are now in first place. They have piled up a 16-8 record this semester.

All bowlers are urged to bring their 50 cents dues next week, if not already paid. This will go toward trophies and a picnic at the end of the year.

Shortly after the beginning of the second semester the teams will reorganize. Watch the bulletin board for further information. — Clara Jackson, sec.

Kowalski
Dry Cleaners

Main Plant — 131 W. Wisner
ALPENA, MICHIGAN
DRIVE-IN PICKUP, 3rd at Washington

Featuring exclusive STA-NU Process as Nationally Advertised in LIFE, ESQUIRE VOGUE, and other magazines.

SPECIAL NOTICE

Upon presentation of ONE AD from any of the foregoing named magazines the bearer will be entitled to one garment cleaned and finished on a NO CHARGE basis.

(Cont'd from Page 2)

SCIENCE

100	Intro To Nature Study	2	Strom	7-10	T night	108AHS
102	Biological Science	4	Strom	9	MWTh (Lec)	113
	Lab I		Strom	2	MWF (Lec)	113
	Lab II		Homeister	1-3	MW	111
	Lab III		Homeister	8-10	MW	111
	Lab IV		Strom	10-12	TTh	111
108	Intro to Phys. and Bio Sciences	4	Strom	1-3	TTh	111
			Homeister,	10	MWF (Lec)	113
			Strom, Frye	8-10	T (Lab)	111
104	Chemistry	4	Frye	11	MTThF (Lec)	113
	Lab I			8-10	MW	112
	Lab II			2-4	TTh	112
202	Chemistry	4	Frye	3	MWF (Lec)	113
	Lab I			8-11	TTh	112
206	Physics	5	Olness	2	MWF (Lec)	113AHS
	Lab I			2-4	TTh	113AHS
210	Geology	3	Homeister	11	TThF (Lec)	108
	Lab I			1-3	F	111
106	Conservation of Natural Resources	3	Strom	3	MWF	111
SECRETARIAL SCIENCE						
102	Typewriting	2	Derthick	10	MTWTh	103
104	Shorthand	4	Stenzel	8	MTWTh	103
107	Office Machines	3	Stenzel	10	MWF	102
202	Typewriting	3	Stenzel	11	MTTh	103
204	Transcription	3	Stenzel	1	MTWTh	103
208	Office Practice	3	Stenzel	9	TTh	102
				11	W	102
210	Business English	3	Stenzel	9	MW	03
				11	F	
SOCIAL STUDIES						
100	Anthropology	3	Heimnick	9	MTTh	107
102	History of West. Civ.	3	Henry	9	MWTh	101
			Henry	1	MWF	113
			Henry	2	TTh	113
			Henry	2	F	101
105	Sociology	3	Heimnick	11	MWF	106
			Heimnick	8	MWF	107
202	U. S. History	3	Henry	3	TThF	105
			Henry	8	MWF	113
203	Political Science	3	Orr	8	MWF	106
			Orr	2	MWF	106
204	History of Michigan	2	Henry	7-9	W night	211AHS
107	Geography	3	Homeister	10	MWF	106

Enjoy \$100 a Month

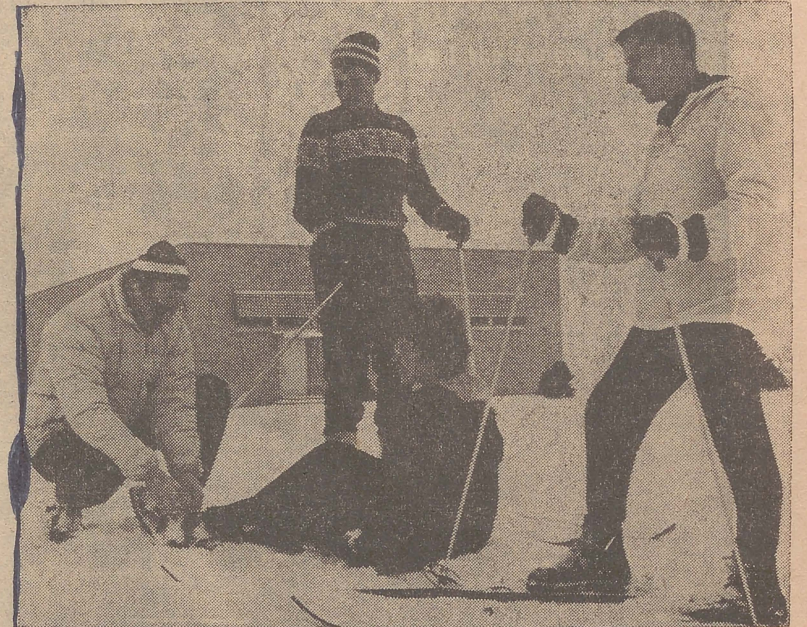
The Metropolitan has arranged a plan that will give you \$100 a month — after your earning days are over. It will cost you nothing to get the facts.

CALL
METROPOLITAN LIFE INSURANCE CO.

Mike Palevich
EL 4-5283

Bill Hainstock
EL 6-0368

ACC. COLLEGE SKI CLUB FORMED



Tom Kelly George Holmes Pat May Jack Jacques

Approximately 20 enthusiasts turned out for the first meeting which was held principally for the purpose of organizing the group and electing officers. George Holmes was elected as President and Pat May, Secretary Treasurer.

The normal individual's first reaction when asked to go skiing is, "No- You can break your leg skiing! I don't want to break mine!" This average person doesn't know what he is talking

about. What he doesn't know is that over 90 per cent of those persons who become passengers of the "mountain meatwagon" are novice skiers who attempt maneuvers for which they are not ready. In fact a skier is safer on the slopes than he is riding to and from a ski area in his automobile.

We'll see YOU at the next Ski Club meeting. Watch the bulletin board!

BESSER
(Cont'd from Page 1)

ing for the Besser Company yesterday told the TIMBER CRUISER, "With all of the many advancements being made in industry today in the field of automation, our industrial engineering needs have increased tremendously. Industry today finds itself in a position of continually making advancements and improvements requiring better trained personnel — particularly in the fields of Mechanical, Electrical and Industrial Engineering.

"We feel that our local Community College can do much in making available all of the necessary basic subjects in these particular fields. We feel more emphasis has to be placed on all of the various degrees of college mathematics. Other phases of college education levels needed in our particular industry today, but not on as large a scale, are students with a good basic

chemical background who would be eligible as lab employees and top notch stenographers from your present secretarial course."



RENE'S JEWELRY

209 N. Second Ave.
Alpena, Michigan

Authorized Artcarved Jeweler

Alpena Dry Cleaners

Exquisite Cleaning
at
Reasonable Prices

Pickup and Delivery Service
C. D. Dickey and Campbell

Tel. EL 4-4829
Alpena, Mich.