

GEO. L. MALTZ, Pres. CHAS. W. RICHARDSON, Vice-Pres. JOHN C. COMFORT, Cashier.

THE

Alpena National Bank

ALPENA, MICHIGAN.

CAPITAL. \$100,000.

DIRECTORS:

GEO. L. MALTZ,
F. W. GILCHRIST,

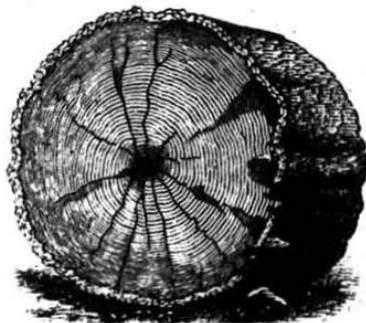
H. D. CHURCHILL,
CHAS. W. RICHARDSON,
W. H. JOHNSON.

W. H. POTTER,
A. N. SPRATT.

CORRESPONDENTS:

American National Bank, Detroit. American Exchange National Bank, New York.
Bay National Bank, Bay City.

☞ Drafts drawn on demand on England, Germany, Ireland, Scotland, France, or any part of Continental Europe.



MASON

LUMBER CO.

ALPENA, MICH.

MANUFACTURERS OF AND WHOLESALE DEALERS IN

LUMBER

W. H. & E. K. POTTER,

MANUFACTURERS OF

Lumber

Lath and

Shingles

OFFICE, HEAD OF WASHINGTON AVE.

ALPENA, MICH.

E. O. AVERY,

MANUFACTURER OF

AND DEALER IN

LUMBER

OFFICE, DOCK STREET,

NEAR FLETCHER,

ALPENA,

MICH.