

GEO. L. MALTZ, Pres. FRANK W. GILCHRIST, Vice-Pres. JOHN C. COMFORT, Cashier.

—THE—

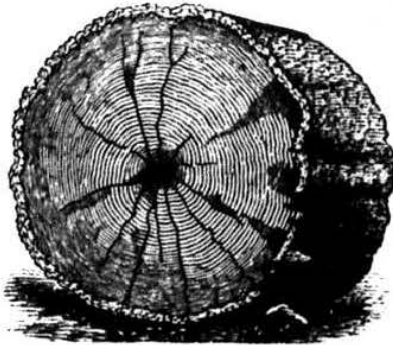
ALPENA NATIONAL BANK

ALPENA, MICHIGAN.

CAPITAL, - - \$50,000.

DIRECTORS:GEO. L. MALTZ.
F. W. GILCHRIST.W. L. CHURCHILL.
W. H. JOHNSON.
W. H. POTTER.A. N. SPRATT.
E. K. POTTER.**CORRESPONDENTS:**American National Bank, Detroit. American Exchange National Bank, New York.
Bay National Bank, Bay City.

Drafts drawn on demand on England, Germany, Ireland, Scotland, France, or any part of Continental Europe.

**MASON****LUMBER CO.**

ALPENA, MICH.

MANUFACTURERS OF AND WHOLESALE DEALERS IN

LUMBER**WM. KIRCHNER,
CIGAR MANUFACTURER**

Manufacturer of the following Brands:

"El Noble,"

"True Knight,"

"Ma Belle,"

"Northern Rose."

**Water Street, Foot of First,
ALPENA, MICH.****ALBERT C. FROST,
Plumbing, Steam & Gas Fitting**

Tin, Copper and Sheet Iron Work.

Gas Fixtures, Globes, Shades, Etc.

Mantels, Grates and Brass Goods.

Furnaces, Stoves and Ranges.

Agricultural Implements & Farm MachineryLubricators, Injectors and Steam Valves. Hot Air and Steam Heating
and Ventilating.

Washington Avenue, Globe Hotel Block,

ALPENA, MICHIGAN.