

NEW CLOTHES for EASTER from the HUB IN EVANSTON

For Boys

Orrington and Church

**LYTTON-HI
2-TROUSER SUITS and
TOPCOATS**

\$20

\$25 \$30

Lytton-Hi prep suits and topcoats have been famous for years in the "quality" field. They're not made down to a price but rather up to Hub specifications. That's why they wear and wear and give satisfaction long after the price is forgotten. University styles in new colors and patterns. Sizes 32 to 38.



**2-Trouser
CADET SUITS
and TOPCOATS
\$16.95 to \$20**

Sizes 11 to 16

**2-Knicker SUITS
\$12.95 and \$16.95**

Sizes 10 to 16

**Suede or Cape
Jackets \$9.95**

Tan or brown in sizes 14 to 22.

**Collegiate Slacks
\$3.95 to \$6.95**

In every conceivable color. Pleated models, many with slide fasteners. Sizes 12 to 22.

Coat Sweaters \$2.95

Belted back model with full talon fastener front. Solid color front or fancy patterned front. Buff, blue heather, green. Sizes 32 to 38.

For Girls

(Sherman and Church)

**PRINCESS SUIT
\$14.95**

Full length princess coat with detachable pique trim on collar. Suspender skirt to match. Spring shades. Sizes 8 to 14.

*Sketched Left
Hat, \$1.95*



**HUB-TEEN COATS
\$10.95**

Perfect fitting coats for most every child. Double-breasted, princess or boxy styles. Spring shades. Sizes 8 to 14.

For the Little Miss 4 to 6½

REGULATION COAT.....\$5.95

For the little miss 4 to 6½. Always so smart. Navy with brass buttons and arm insignia. Half belt in back. Hat included. *(In larger sizes 7 to 12, the coat only, \$7.95).*

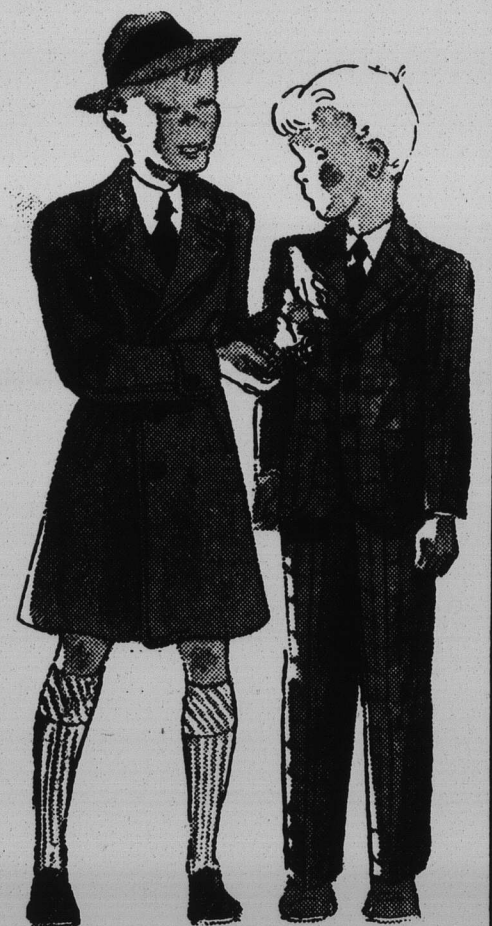
*For the 6 to 12 Boy
Orrington and Church*

RUGBY SUIT ..\$12.95

Man-tailored flannel suit. Double-breasted belted bi-swing coat with 1 knickerette, 1 English short or single-breasted 3-button coat with 1 short and 1 contrasting herringbone long. 6 to 12.

**BALMACAAN
TOPCOAT\$10.95**

Harris Tweed single-breasted model or a double-breasted raglan tweed. Celanese lining. Generous turn-ups for lengthening. Sizes 6 to 10.



*2 Hours Free Parking for HUB Customers
at Evanston National Garage*

THE HUB

Henry C. Lytton & Sons

Orrington and Church . . . Open Tues., Thurs., Sat. Evenings — Sherman and Church . . . Open Saturday Evenings